

COUNTY OF LOS ANGELES  
 ROAD DEPARTMENT  
**BANDINI STREET**

FROM MARGRET STREET TO STA. 110+34.63  
 SCALE 1"=50'  
 JUNE 1914

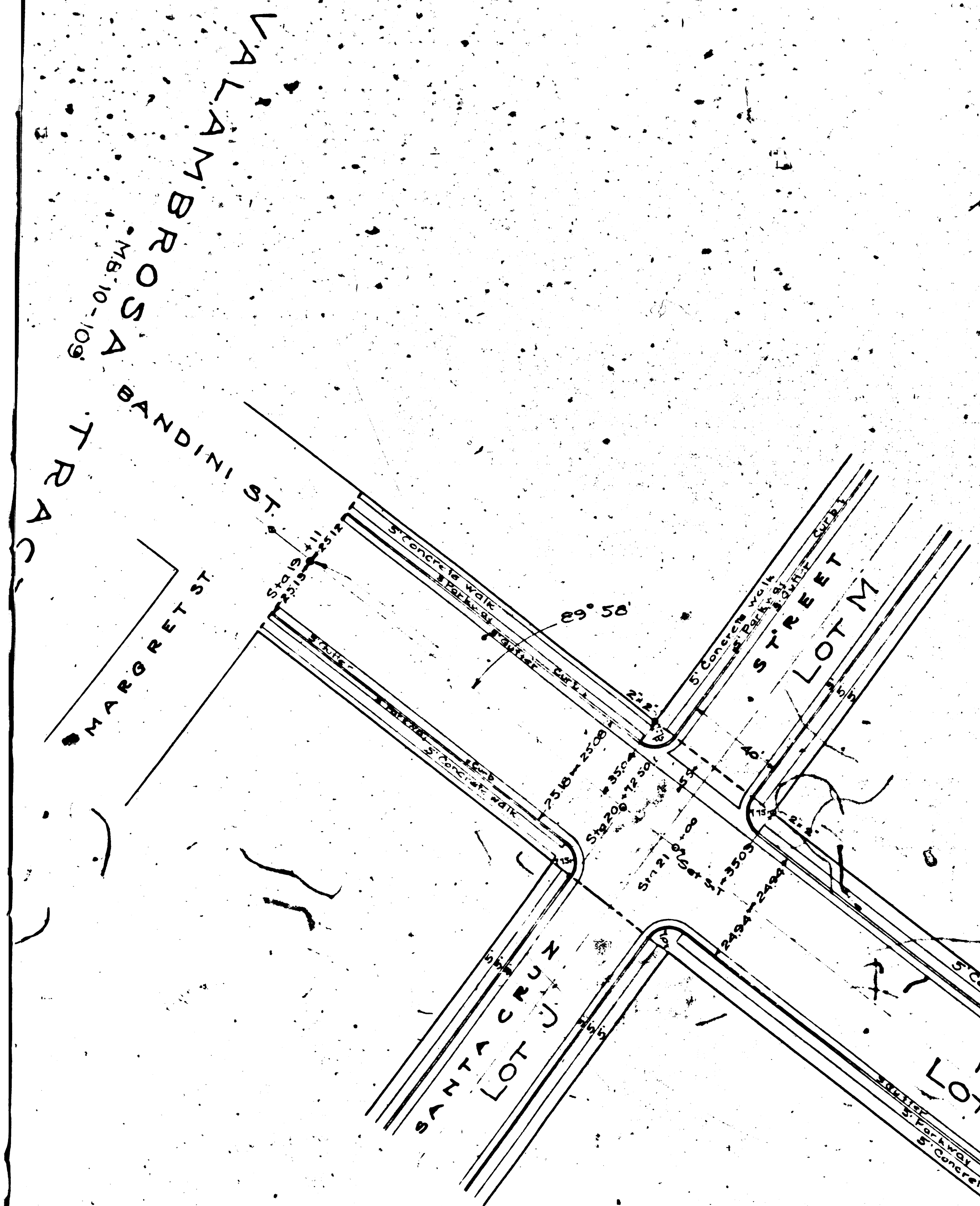
DRAWN BY C.H.  
 TRACED BY C.H.

**A-514**

C.S. 7962-  
 P.M. 17962

APPROVED

Engineer.



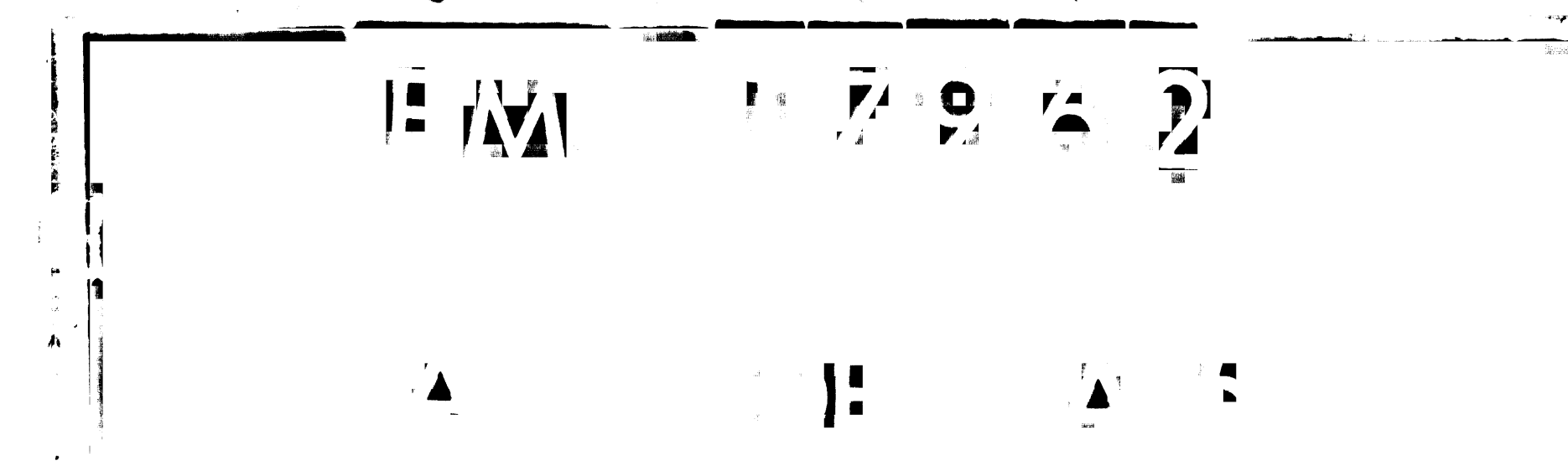
TRACT

NO. 2935  
 M.B. 21168

154° 53'  
 Δ = 427.07  
 T = 312.16  
 E = 391.07  
 R = 4000'

Need 12" pipe here

N 45° 01' W  
 616.88

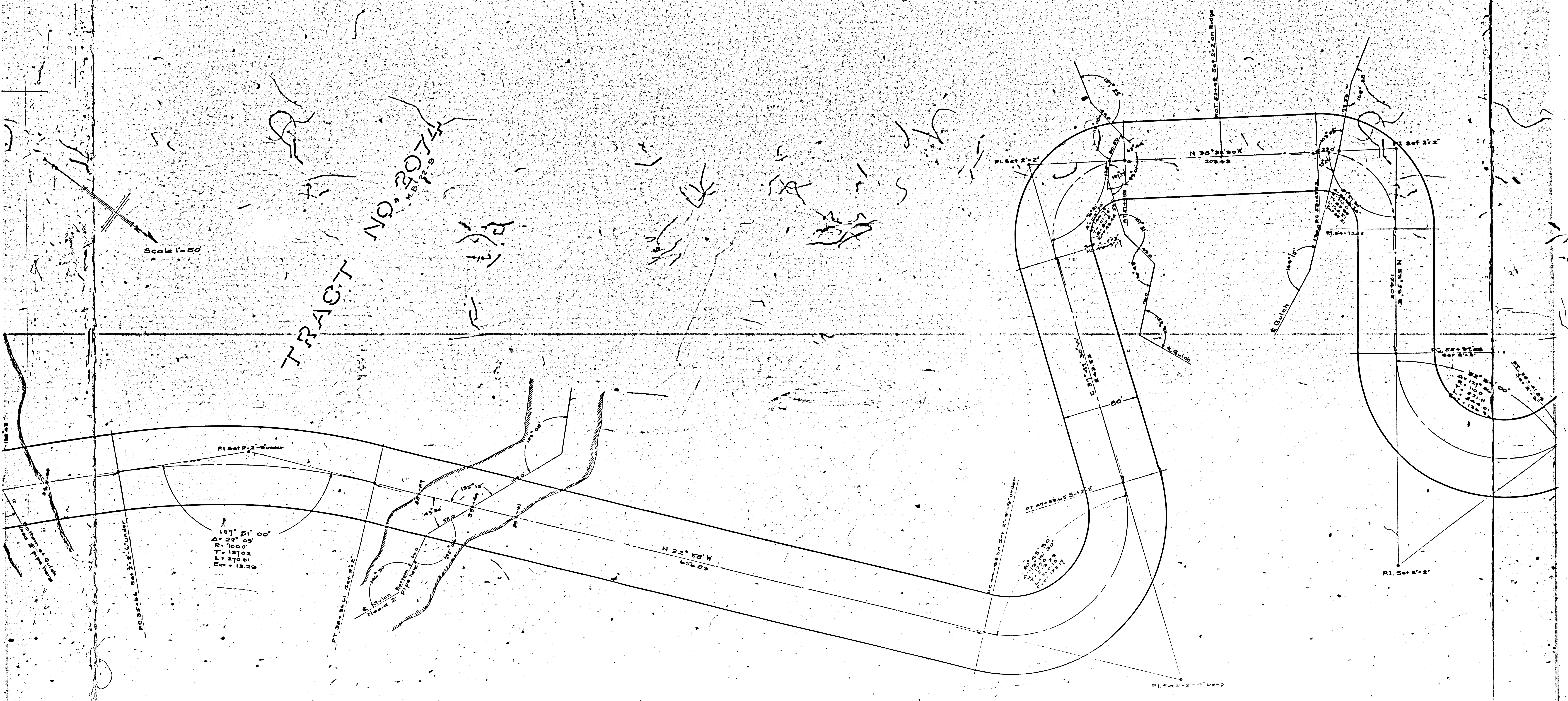


FM 117962

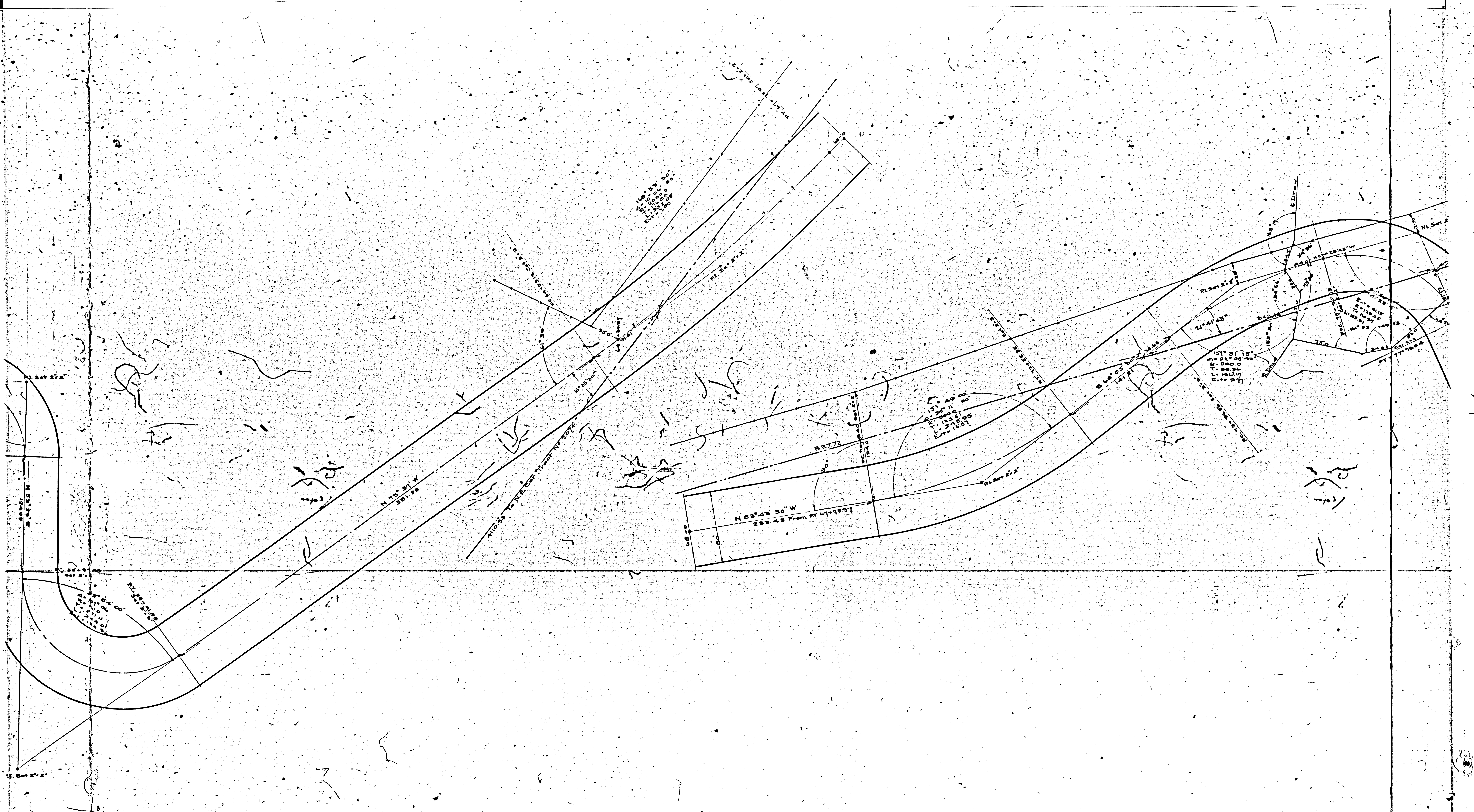
A 2 OF A 5

Scale 1"=50'

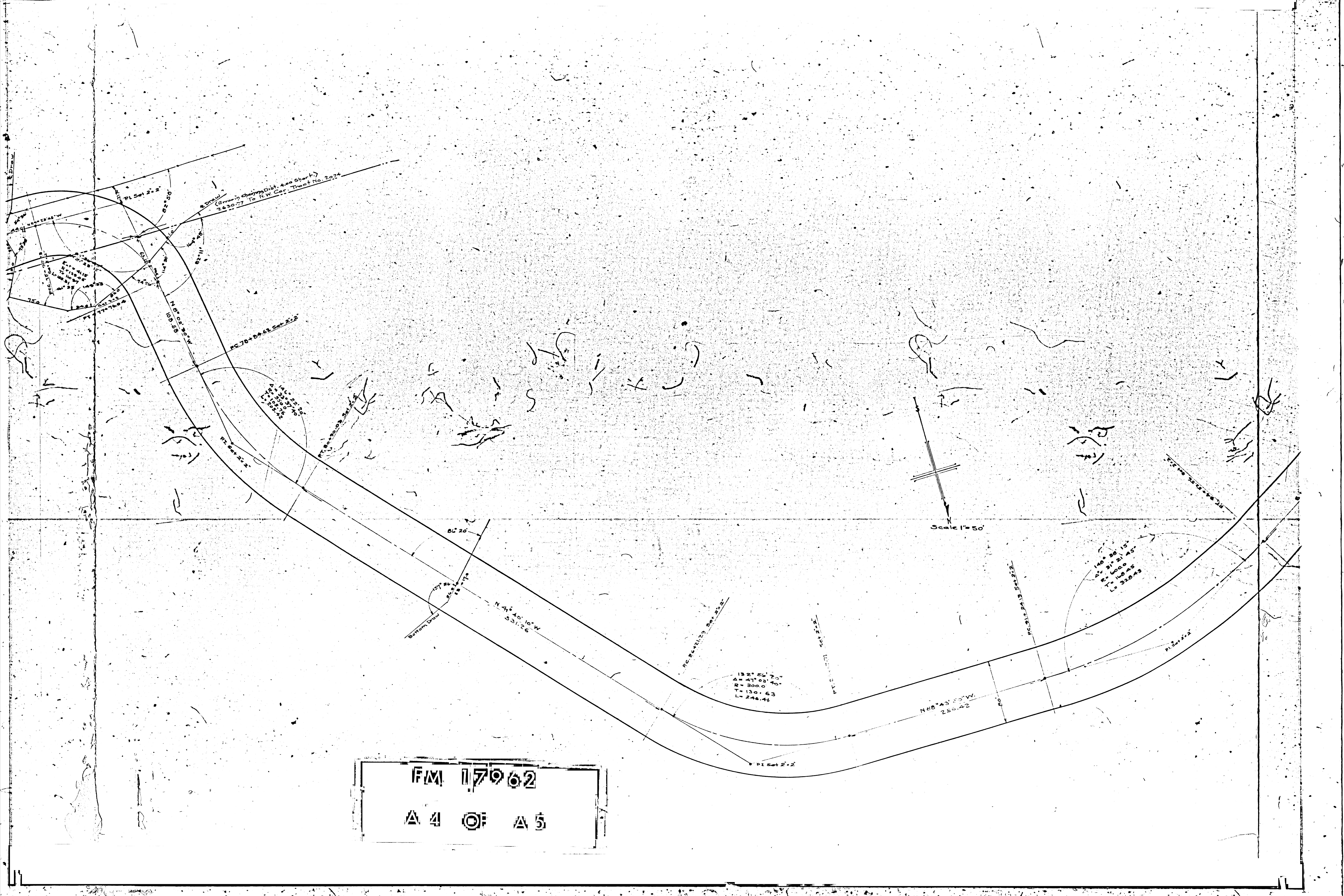
TRACT NO. 2074  
M.B. 17-9



157° 51' 00"  
Δ = 22° 09'  
R = 7000'  
T = 13102'  
L = 270.61'  
Ext = 13.39'



FM 17962  
 A 3 OF A 5



PL Set 2x2  
 (Error in change Dist. 400 Short)  
 2630.77 To N.W. Cor. Tract No. 2074

N 8° 02' 30" W  
 100.58

PC 70+04.61 Set 2x2

PL Set 2x2  
 110.50  
 110.50  
 110.50  
 110.50  
 110.50

PL Set 2x2

Scale 1" = 50'

Bottom Road  
 86° 20'  
 N 41° 40' 10" W  
 531.26

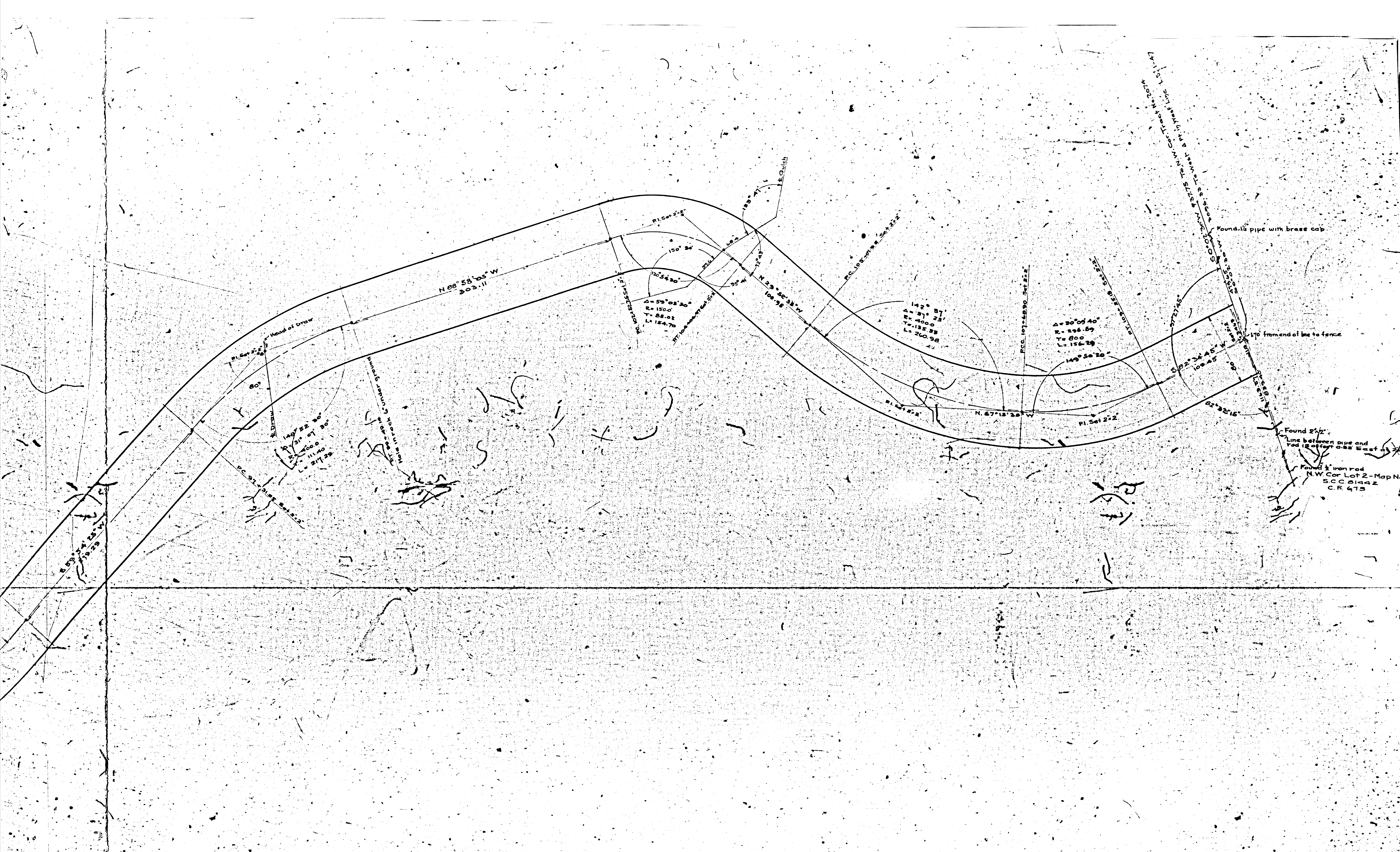
PC 20+11.73 Set 2x2

132° 56' 20"  
 A = 417.08'  
 B = 300.04'  
 T = 130.63  
 L = 246.44

N 68° 43' 50" W  
 235.42

146° 38' 15"  
 A = 310.51'  
 B = 100.00'  
 L = 310.43

F.M. 17962  
 A 4 OF A 5



Found 1/2" pipe with brass cap  
 170 from end of line to fence  
 Found 2 1/2" Line between one and red is offset 0.88 East of  
 Found 1/2" iron rod  
 N.W. Cor. Lot 2 - Map No. SCC 81442 C.F. 418