

STATE OF CALIFORNIA  
 DEPARTMENT OF ENGINEERING  
 CALIFORNIA HIGHWAY COMMISSION  
 MAP OF RIGHT OF WAY  
 FOR PROPOSED COUNTY ROAD IN SEC. 24  
 T. 5 N. R. 17 W. S.B.B. & M.  
 LOS ANGELES COUNTY, CALIFORNIA  
 SCALE 1" = 100' June 1914.

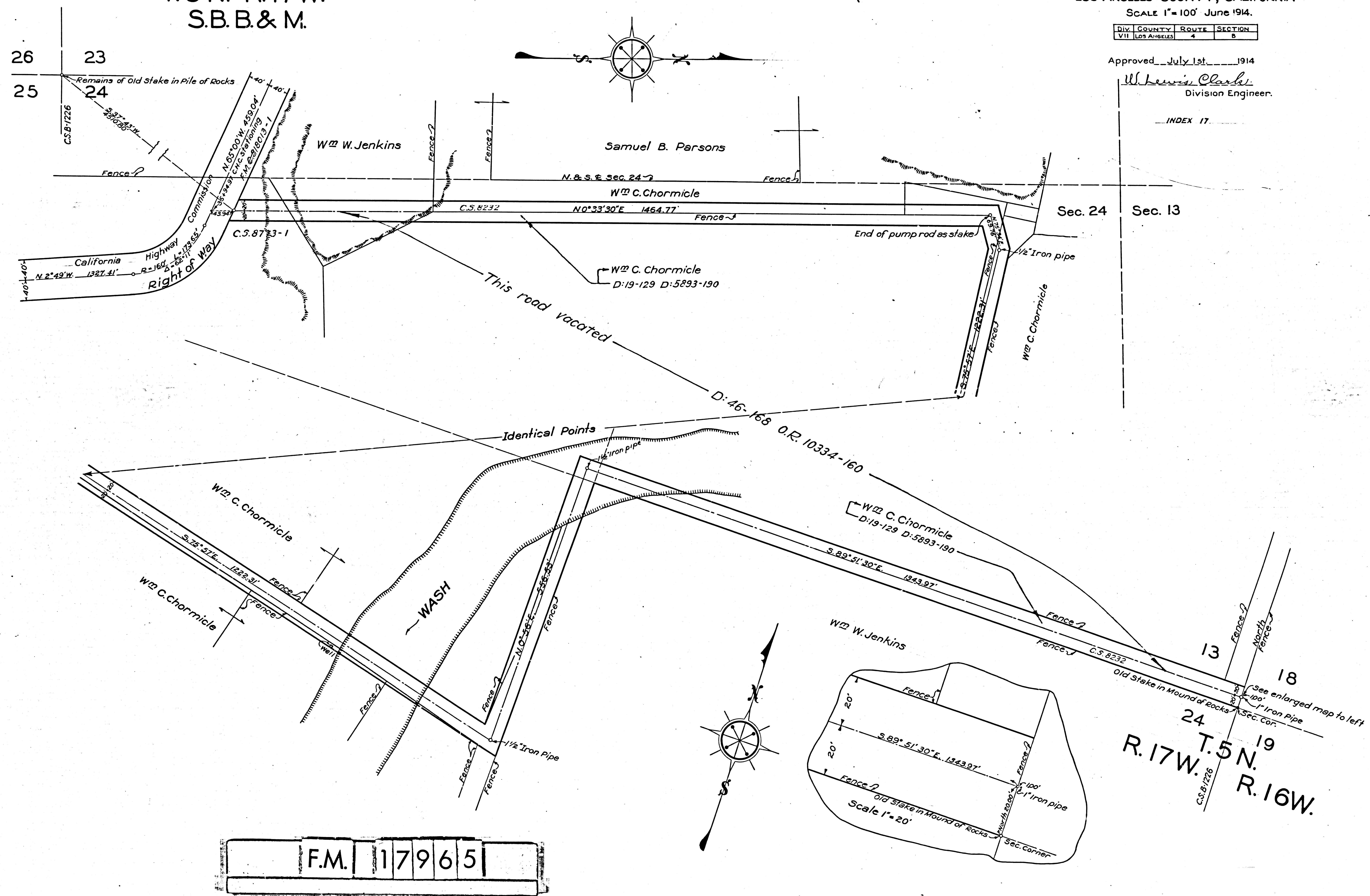
DIV.	COUNTY	ROUTE	SECTION
VII	LOS ANGELES	4	B

Approved July 1st 1914

*W. Lewis Clarke*  
 Division Engineer.

INDEX 17

T. 5 N. R. 17 W.  
 S.B.B. & M.



F.M. 117965