

NARBONNE AVE

F/M 17970

A 2 OF A 6

AVE

MILLER

CITRUS AVE

STAGE ST

ST

PALM ST

ACACIA

PINE

116

117

118

119

120

121

122

123

124

91

92

93

94

95

96

97

98

99

100

101

D: 19-195

D: 6066-477

D: 19-194

D: 6118-31

D: 19-197

D: 6092-276

D: 23-65

D: 6116-53

D: 24-28

D: 6072-322

D: 24-26

D: 6108-103

D: 24-26

D: 6108-103

D: 19-197

D: 6092-277

D: 24-29

D: 6108-31

D: 24-29

D: 6061-220

D: 19-194

D: 6108-31

D: 24-26

D: 6103-78

D: 24-26

D: 6108-103

D: 23-65

D: 6116-53

D: 24-24

D: 6061-221

D: 23-65

D: 6116-53

D: 19-194

D: 6118-31

N

3-63

O.R. D: 2743-331

O.R. D: 3491-715

D: 78-252 O.R. 970-347

D: 81-136 O.R. 1009-430

D: 78-257 O.R. 99-347

D: 81-136 O.R. 1009-430

D: 23-45 D: 6116-53
O.R. 257 O.R. 99-347

D: 19-194 D: 6118-31
D: 78-252 O.R. 970-347

FRUIT TREES

CYPRESS HEDGE

GUM TREES

Power Line

Telephone Line

Telephone Line

Power Line

D: 19-194
D: 6118-31

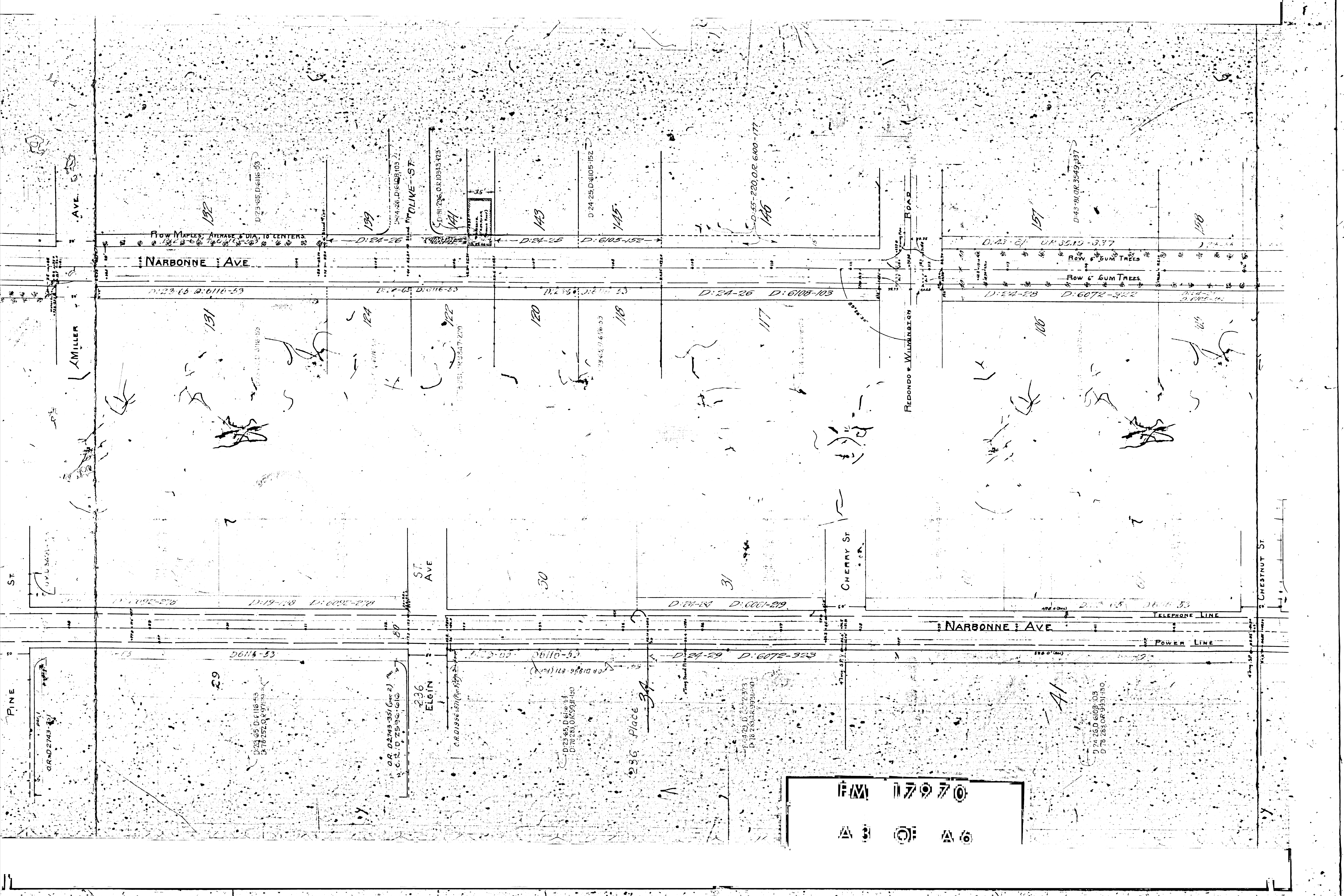
D: 24-28
D: 6072-321

D: 24-28
D: 6072-321

D: 19-194
D: 6092-277

D: 24-26
D: 6108-103

D: 24-28
D: 6072-322

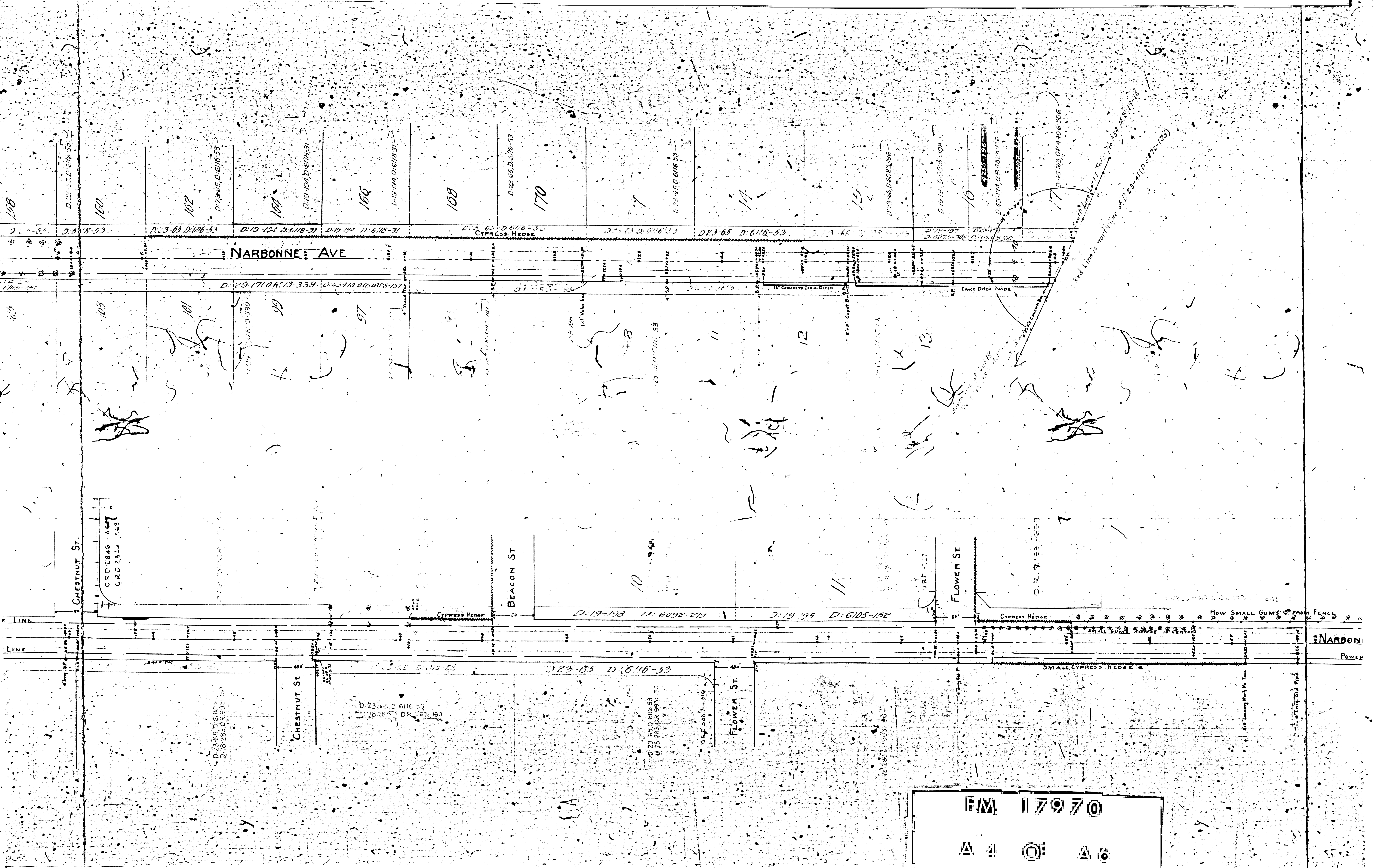


FLOW MAPLES, AVERAGE 6 DIA, 10 CENTERS
NARBONNE AVE

REDONDO & WILMINGTON ROAD

NARBONNE AVE
TELEPHONE LINE
POWER LINE

F/M 17970
A 3 O A 6



F.M. 117970
A 4 O A 6

2" Pipe with Dress Cap N 160 on map
Elev. 222.24 L.P.V.R.

NARBONNE AVE

BANK OF WASS

PT. 130+06.34

PC 125+00.70
PT. 125+00.70
L. 125.00
L. 125.00

PT. 130+26.68
L. 130.00
L. 130.00

PT. 137+42.04

PC 137+16.00
PT. 137+16.00
L. 137.00
L. 137.00

PT. 141+00.07
L. 141.00
L. 141.00

BRETHREN ST

SALT WORKS ROAD

WILMINGTON AND

POPPY ST

NARBONNE AVE

POWER LINE

POWER AND TELEPHONE LINE

LARGE CYPRESS HEDGE

D. 19-195
D. 6116-96

FM 117970

A 5 OF A 6

FM 117970
A 6 O A 6

ROAD DISTRICT IMPROVEMENT No. 4

MAP SHOWING LOCATION OF WORK TO BE DONE ON

NARBONNE AVENUE

FROM LONG BEACH & REDONDO ROAD TO SOUTH LINE TRACT No. 954 MB 17-16

SCALE - 1" = 50'

JULY - 1914

FB-85

DRAWN BY ABB

TRACED BY I.G.T.

APPROVED *[Signature]*
ENGINEER

PORTION TINTED GREEN TO BE GRADED AND PAVED WITH OILED MACADAM
CHECKED BY ABB & CEM

A-519
C-517970

