

F.M. 17974

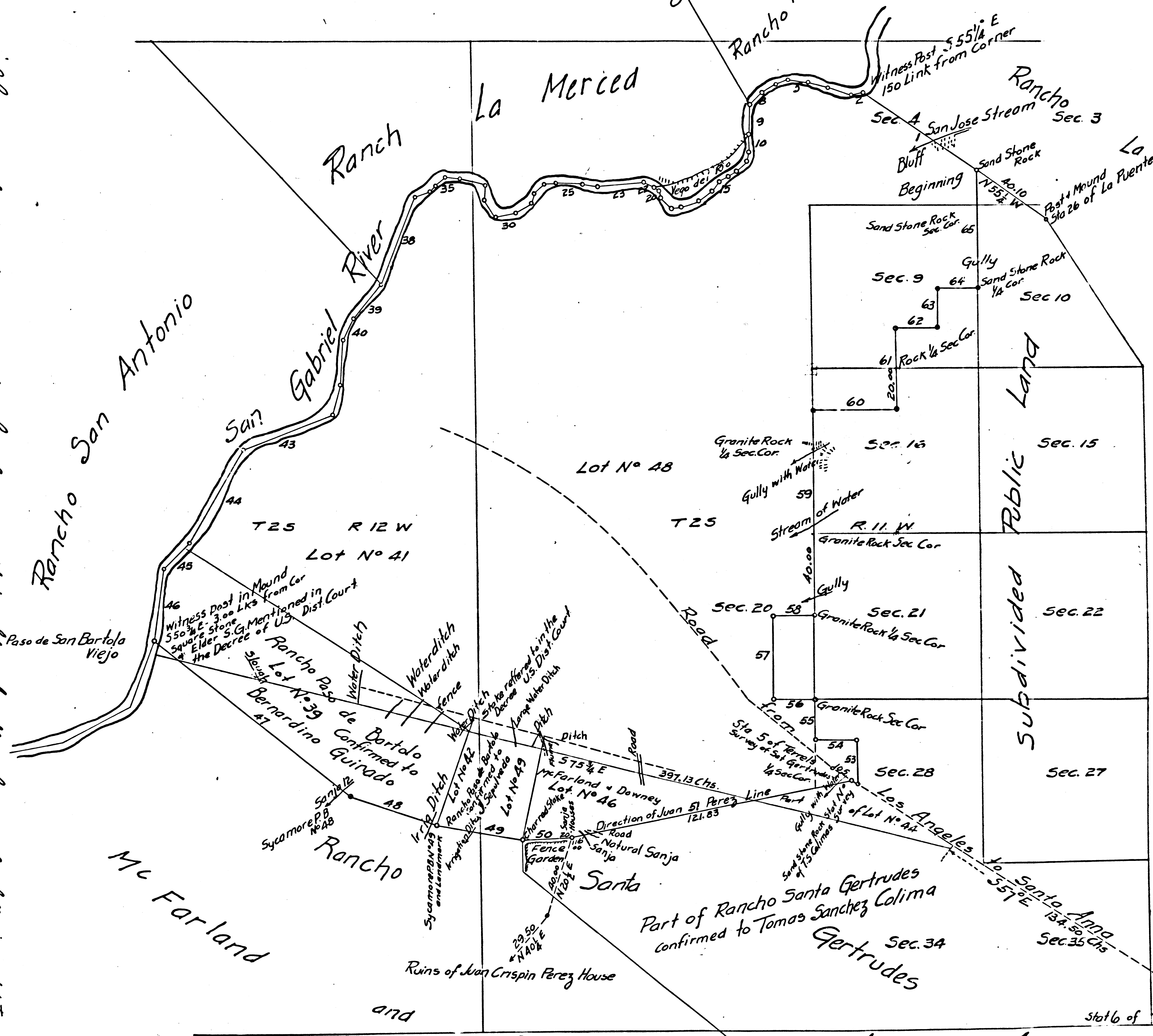
FILED NOV 13 1879

I hereby certify that under the provisions of the Act of Congress approved July 1st 1864, this survey and plat were advertised in the "Los Angeles Star" published in the County of Los Angeles for four weeks, the first publication thereof being on the 19th day of January 1878 also in the "Alta California" published in the City and County of San Francisco for four weeks the date of the first publication being the 19th of January 1878. This plat remained in this office, subject to inspection during ninety days from the date of first publication
 U.S. Surveyor General's Office
 San Francisco California
 December 18th 1879

PLAT
 OF THE
 RANCHO PASO DE BARTOLO
 FINALLY CONFIRMED TO
 PIO PICO AND JUAN PEREZ
 AS LOCATED UNDER ACT OF
 CONGRESS APPROVED JULY 23rd 1866
 FROM FIELD NOTES OF SURVEYS ON FILE
 IN THE OFFICE OF THE
 U.S. SURVEYOR GENERAL
 CONTAINING: 8991.22 ACRES
 SCALE: 40 CHS TO 1 INCH
 VAR 13°30'E

IM 34
 IM 36
 IM 37

I hereby certify that to be correctly copied from the original survey plat in possession of the following individuals
 not shown upon the original as a witness viz: the words and plates from said survey being added to note 24
 of the original plat dated 2. 3. 4 and 5 of the publications under the following names with the exception of
 the yellow line or line of agreement which was shown upon the original plat as a witness
 the addition of the names of Pio Pico and Juan Perez as confirmed in the original plat as a witness
 December 18th 1879
 Theo Wagner (signed)
 U.S. Surveyor Gen.



Note:
 1st The Yellow Line is the Line of Agreement between the Claims of the Ranchos Santa Gertrudes and Paso de Bartolo as surveyed by G.H. Thompson Dep. Surv. in accordance with the Decree of the U.S. District Court for the Southern District of California and platted from said Survey.
 2nd The Green Line is the same Line of Agreement as shown on the Map of Rancho Santa Gertrudes (P. Farland and Downey).
 3rd The Black dotted Line is the same Line of Agreement as shown on the Map of Rancho Paso de Bartolo (J. Sepulveda).
 4th The Area of the Rancho Paso de Bartolo (Pio Pico) containing as above 8991.22 Acres includes
 Rancho Paso de Bartolo (B. Guirado) containing 875.99 Acres
 Rancho Paso de Bartolo (J. Sepulveda) South of Yellow Line 197.63
 Part of Rancho Santa Gertrudes (M. Farland and Downey) South of Yellow Line 233.30
 Aggregate 1371.12
 5th The Area of the Rancho Paso de Bartolo (Pio Pico) North of the Yellow Line and within the exterior boundaries of this and the Rancho Santa Gertrudes is 8120.33 Acres including
 Part of Rancho Paso de Bartolo (B. Guirado) 398.57 Acres
 Part of Rancho Santa Gertrudes (T.S. Colima) 86.24
 Aggregate 484.81

Boundaries

No.	Course	Dist.	No.	Course	Dist.	No.	Course	Dist.	No.	Course	Dist.
1	N 53 1/2 W	66.80	18	S 69 1/2 W	5.00	35	S 47 1/2 W	7.00	62	S 57 E	2.84
2	S 74 W	5.00	19	N 46 W	8.00	36	S 20 1/2 W	3.00	53	N	20.83
3	N 70 1/2 W	12.00	20	N 17 W	3.50	37	S 71 W	9.00	54	W	20.00
4	N 73 1/2 W	10.00	21	N 65 W	3.00	38	S 22 W	44.00	55	N	20.00
5	N 75 1/2 W	10.00	22	N 39 1/2 W	6.00	39	S 39 W	22.72	56	W	20.00
6	S 62 1/2 W	7.00	23	S 84 W	22.00	40	S 24 W	11.50	57	N	40.00
7	S 63 W	7.00	24	N 82 1/2 W	7.00	41	S 5 1/2 W	21.00	58	E	20.00
8	S 45 1/2 W	8.33	25	N 84 W	16.00	42	S 14 W	15.50	59	N	100.00
9	S 5 1/2 W	14.50	26	S 82 1/2 W	4.00	43	S 7 1/2 W	46.50	60	E	40.00
10	S 6 1/2 E	9.00	27	S 44 1/2 W	7.00	44	S 31 W	61.25	61	N	40.00
11	S 12 W	5.00	28	S 14 W	4.00	45	S 44 W	18.50	62	E	20.00
12	S 47 W	6.00	29	S 88 1/2 W	8.00	46	S 9 1/2 W	36.00	63	N	20.00
13	S 69 1/2 W	5.00	30	S 74 1/2 W	11.00	47	S 50 1/2 E	119.00	64	E	20.00
14	S 57 1/2 W	6.00	31	N 35 W	11.80	48	S 70 1/2 E	44.39	65	N	57.21
15	S 22 1/2 W	5.00	32	N 16 1/2 E	6.00	49	S 80 1/2 E	43.00			
16	S 50 1/2 W	9.00	33	N 73 1/2 W	14.00	50	N 88 1/2 E	21.00			
17	S 67 1/2 W	9.00	34	N 81 W	7.00	51	N 78 1/2 E	139.83			

Note by Mrs. Strong - Road from Los Angeles to Santa Anna should be Mission San Gabriel to Capistrano

The Location of the Rancho Paso de Bartolo as shown on this Plat has been made under Act of Congress approved July 23rd 1866 and the Field Notes thereof have been examined and approved and are on file in this office.
 U.S. Surveyor General's Office
 San Francisco California
 July 11th 1881

Theo Wagner (signed)
 U.S. Surveyor Gen. Cal.

Approved August 5, 1881
 (signed) N. B. McFarland
 Commissioner of the
 General Land Office

Note:-
 So far as possible have followed placing of words, style of lettering, spelling, etc. as shown on original.
 All Lot Numbers, Sec. Numbers and Town and Range Numbers shown in Red. Red Lines and Blues as noted.
 No Yellow Line shown as in Note #1, nor Green Line as in Note #2
 Tabulated Courses and those on traverse line do not agree
 (signed) A.K. Warren Sept 9 1914
 Walter Pearl
 chf. party Div. A

LINKED BY R.K.O. Sept. 17 1914
 COUNTY SURVEYORS OFFICE.

FILED NOV 13 1881