

ROAD DISTRICT IMPROVEMENT No. 72

MAP SHOWING LOCATION OF WORK TO BE DONE ON
WESTERN AVENUE

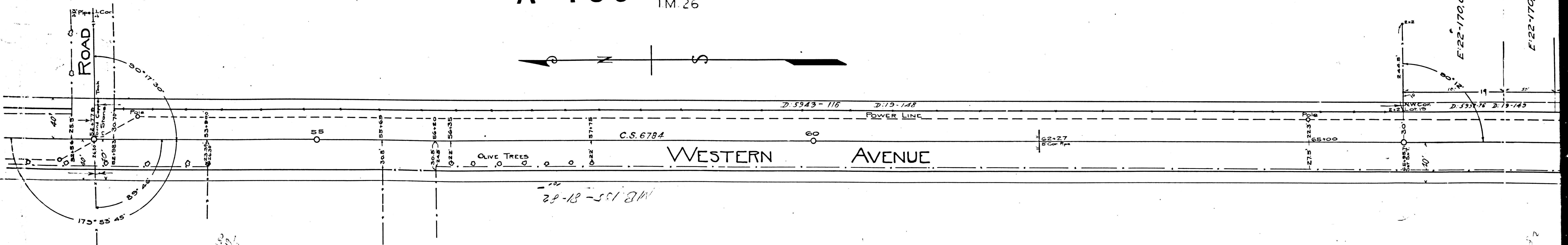
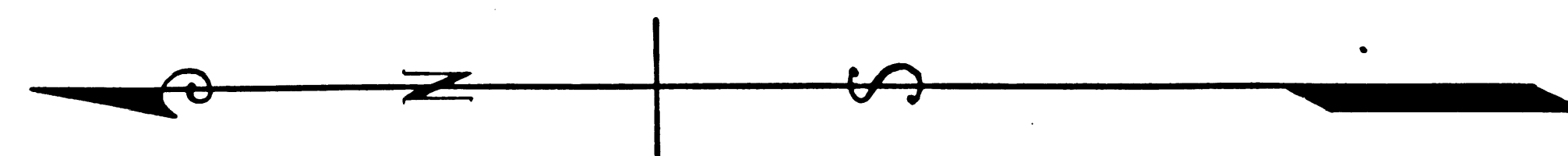
MANCHESTER AVE. SOUTHERLY TO HARMONY AVE.

F.B.* 109 JULY 1914 DRAWN BY N.C.
LB* 790 SCALE 1"=50' TRACED BY N.C.

PORTION TINTED GREEN TO BE GRADED AND PAVED WITH OILED MACADAM.

A-459 1M. 24
 1M. 26

APPROVED: *[Signature]*
ENGINEER



F.M.	1	7	9	9	5	-	1
A	1	OF	A	4			

E:22-170, O.R. 17897-240
E:22-170, O.R. 17897-253

27/14
17/10
27/37

File
PA
O

157-41-57

AVENUE..

D:5826-372 D:19-149
POWER LINE FOLLOWS LINE OF FENCE

15" VIT PIPE

E:22-170, O.R. 17897-240
E:22-170, O.R. 17897-253
E:22-170, O.R. 17935-84

EDGAR AVE.
105TH STREET

106TH STREET

LIBERTY ST.
107TH STREET

108TH STREET

E:32-61, O.R. 16765-373

E:32-61, O.R. 16765-373

E:32-61, O.R. 16765-373

D:5940-235 D:19-148

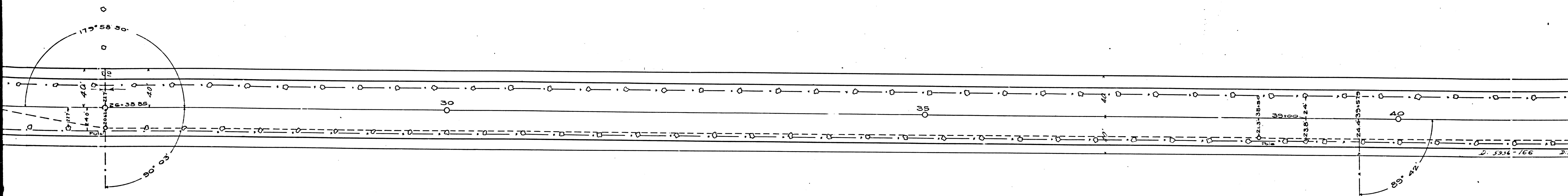
79-28-08
Set S.T.
Found 2 1/2
12" Cor. Pipe

MB. 135-8182

TRACT 3759
M.B. 135-81, 82

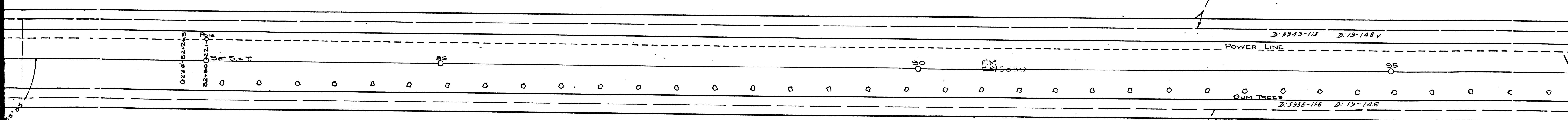
F.M. 17995-1
A 2 OF A 4

108TH ST. S.
L.A. City Boundary



S.W. $\frac{1}{4}$ of SECTION 1, T.3 S., R.14 W.

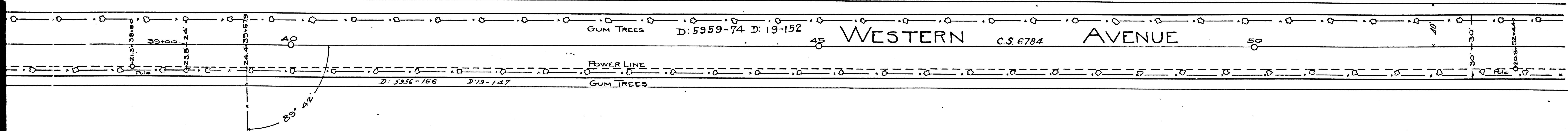
E:39-265, O:R17794-238



E:48-147, Loc. 9960-J

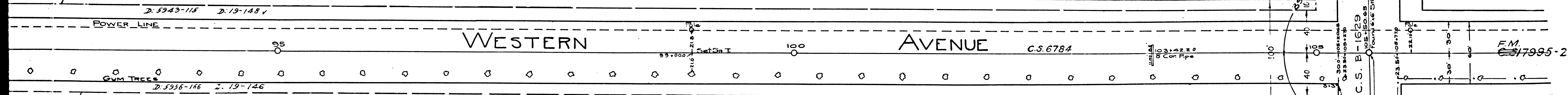
S.E. $\frac{1}{4}$ of SECTION 2, T.3 S., R.14 W.

F.M.	1	7	9	9	5	-	1
A	3	OF	A	4			



3 S, R. 14 W.

E: 39-265, 0, R: 17794-238



3 S, R. 14 W.

F.M.	1	7	9	9	5	-	1
A	4	OF	A	4			