

AVE

Found 6" Rdw. Sit.

22' 5" Oiled Macadam Pavement

E 204-174, O.R.D. 1257-805

Power Pole Line

WESTERN AVENUE

ANTONY

Out. Trees and Fence

E 209-153, O.R.D. 1294-574

E 204-174, O.R.D. 1257-805

E 204-174, O.R.D. 1257-805

E 204-174, O.R.D. 1257-805

E 204-174, O.R.D. 1257-805

# ROAD DISTRICT IMPROVEMENT NO. 45

MAP SHOWING WORK TO BE DONE ON

## WESTERN AVENUE.

APPROVED  
ENGINEER

MAY 1914  
FIELD BOOK 109

TRACED BY C.H.  
DRAWN BY C.H.  
CHECKED BY HEB.

SCALE 1"=50'

PORTION TINTED GREEN TO BE GRADED AND PAVED WITH OILED MACADAM,  
OILED MACADAM WITH DISINTEGRATED GRANITE BASE & CONCRETE PAVEMENT WITH BITUMINOUS WEARING SURFACE  
AND A DISINTEGRATED GRANITE BASE.

### A-504

THIS PLAN IS HEREBY MADE PART OF THE SPECIFICATIONS

Stone Monument

60' Rec.

AVE

Palm Trees spaced 40'

25'

Cypress Hedge

WESTERN AVENUE

Found Stone Monument

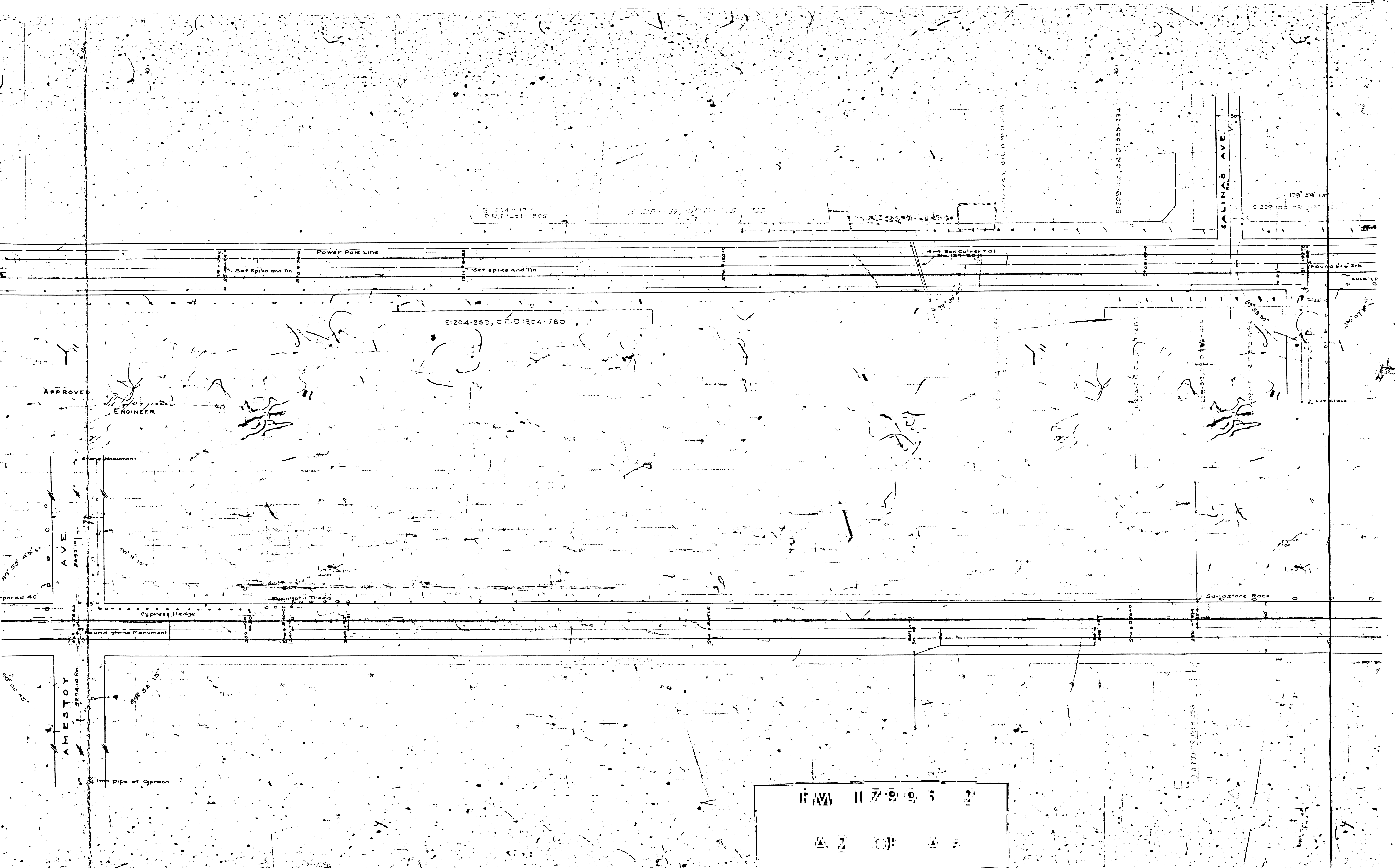
AMESTOY

2 1/2" Dia. Re.

60' x 15'

1/2" Iron pipe at Cypress

MAY 11 7 9 0 5 2  
A 1 1 1 1



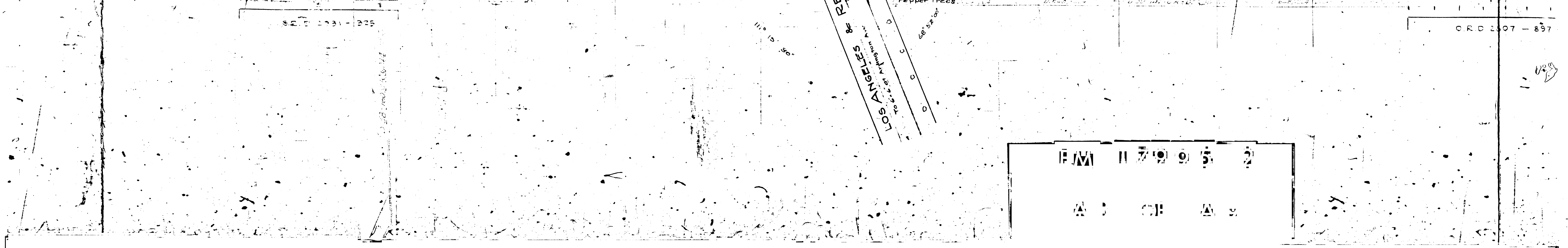
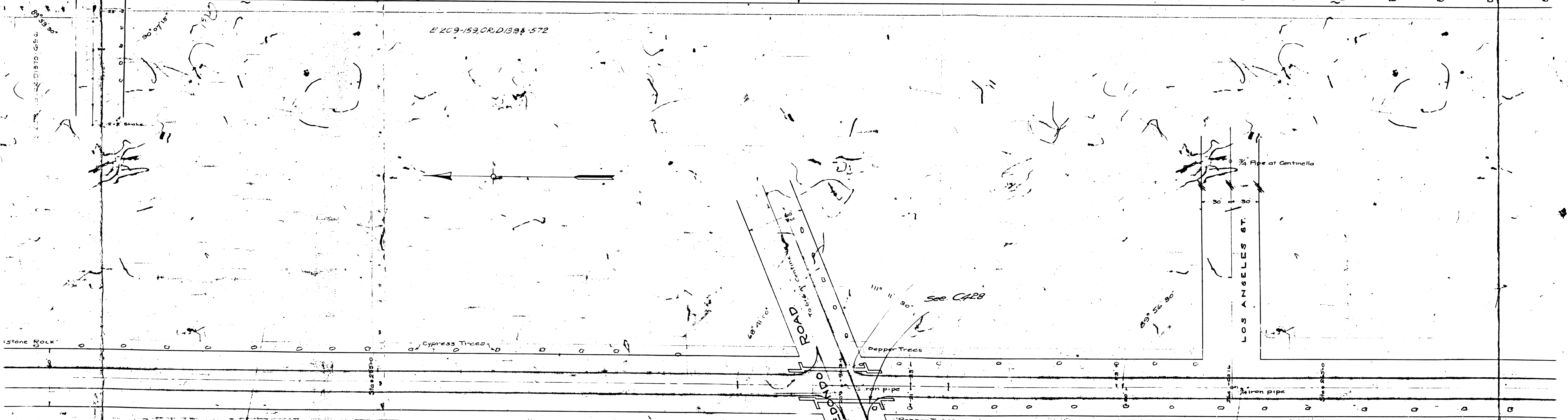
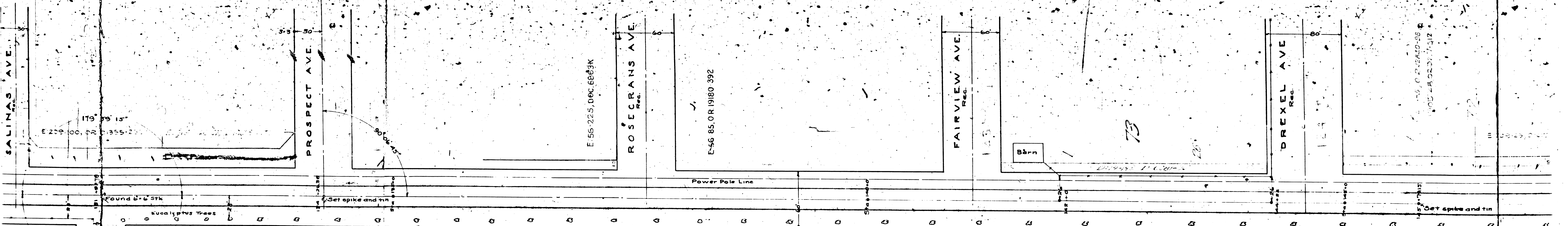
E:204-173  
O.R.D. 1491-1805

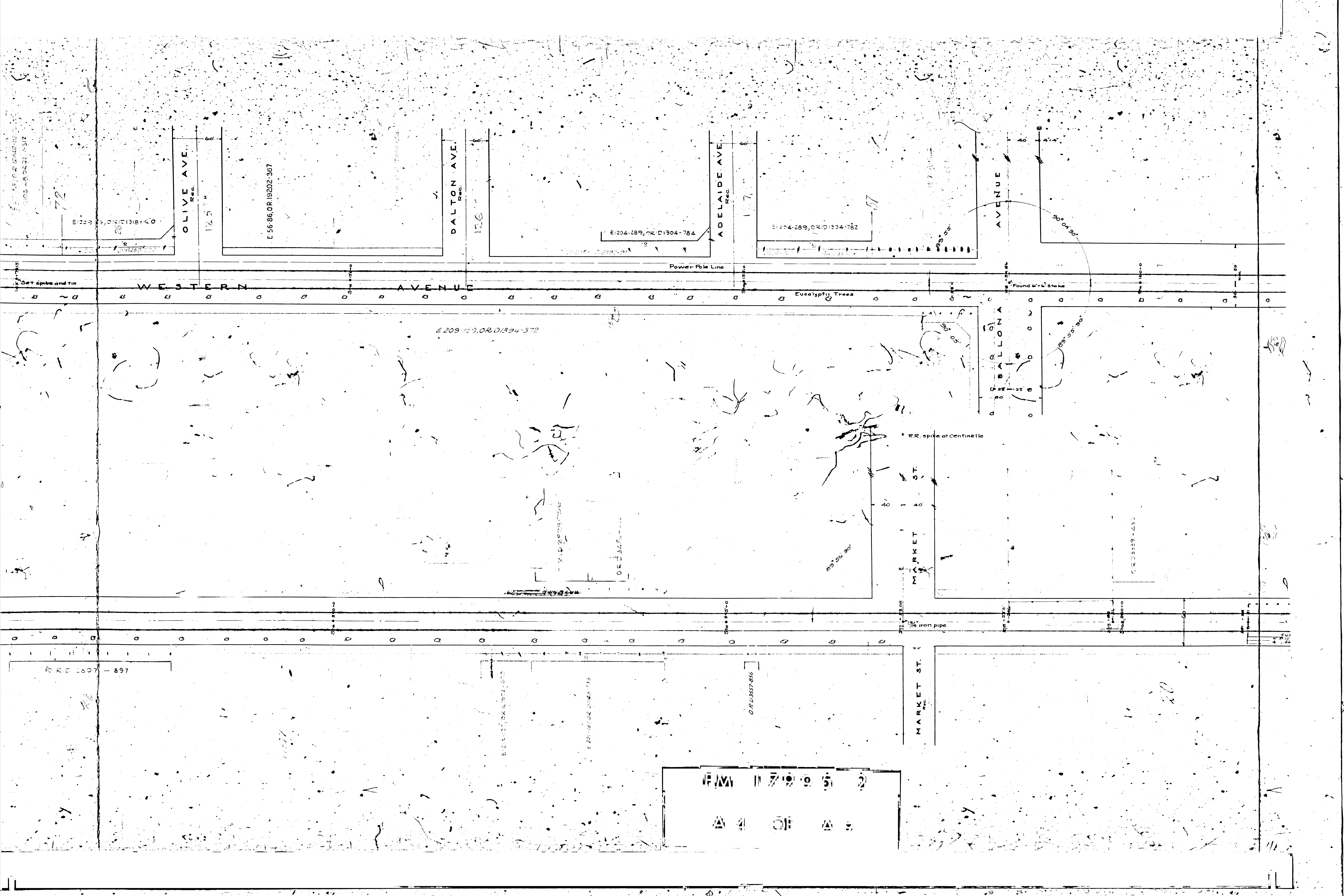
E:109-150, O.R.D. 1355-234

E:204-289, O.R.D. 1304-780

APPROVED  
ENGINEER

11/11/95  
2 OF 2





15-15-15  
103-48-02-1-312

72

E 122-3  
O-181-1318-40  
26

OLIVE AVE.  
Rec.

E 56-86, OR 19202-367

DALTON AVE.  
Rec.

126

E 204-289, OR D1304-784

ADELAIDE AVE.  
Rec.

117

E 204-289, OR D1304-782

AVENUE

WESTERN AVENUE

Power Pole Line

Eucalypti Trees

Found W.L. Stake

E 209-159, OR D1894-572

BALLONA AVENUE

R.R. spike at Centinella

MARKET ST.

MARKET ST.  
Rec.

OR D 1807-897

OR D 1571-500

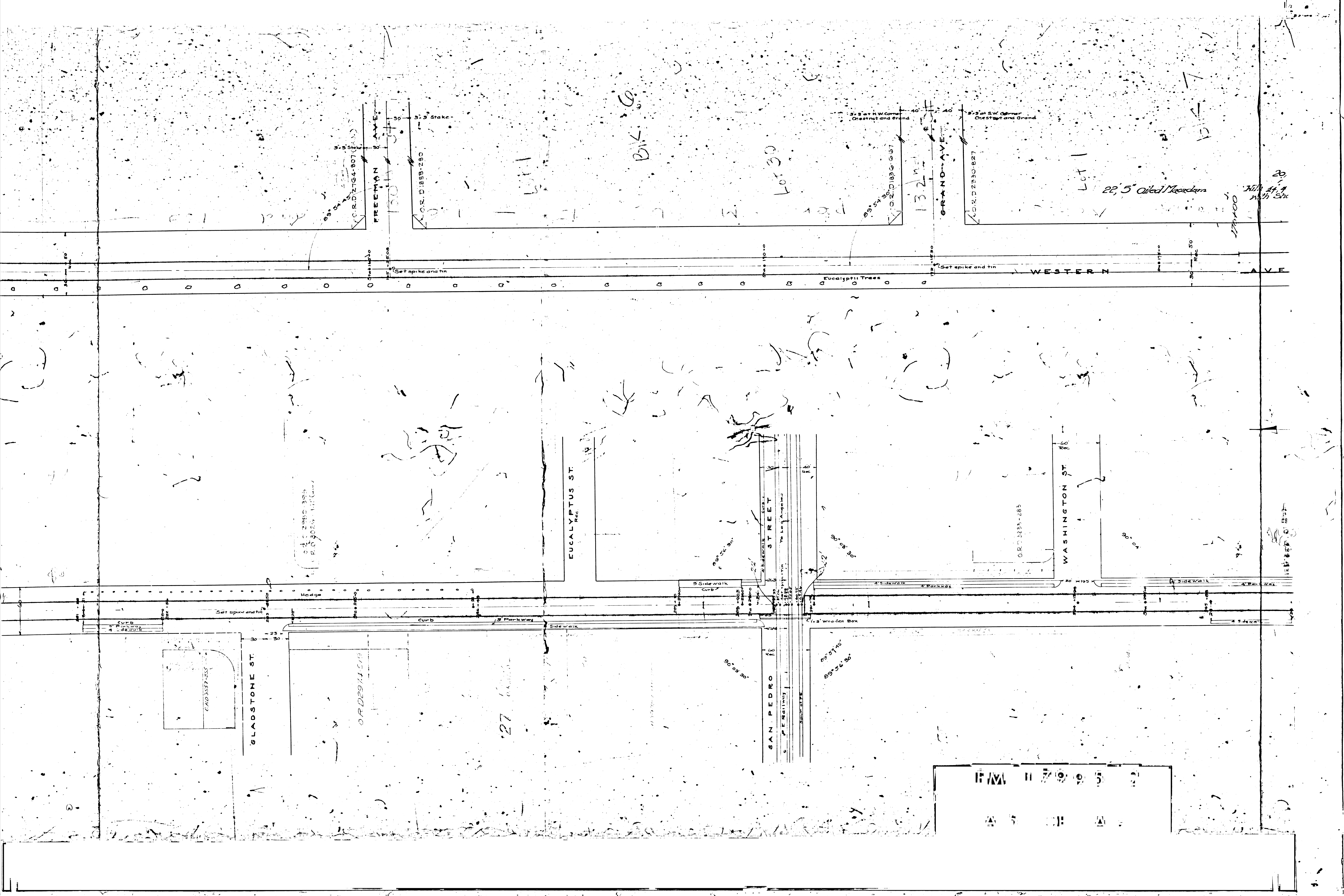
E 201-161-02 D145-735

OR D 3557-656

OR D 3559-454

11 7 9 5 2

4 1 5



C.R.D. 2764-807

FREEMAN AVE

C.O.R.D. 1858-290

C.R.D. 1896-637

C.R.D. 2330-827

Lot 30

13.2

GRAND AVE

Lot 1

22.5' Oiled Macadam

27x100

20' With 4' 1/2" Sid

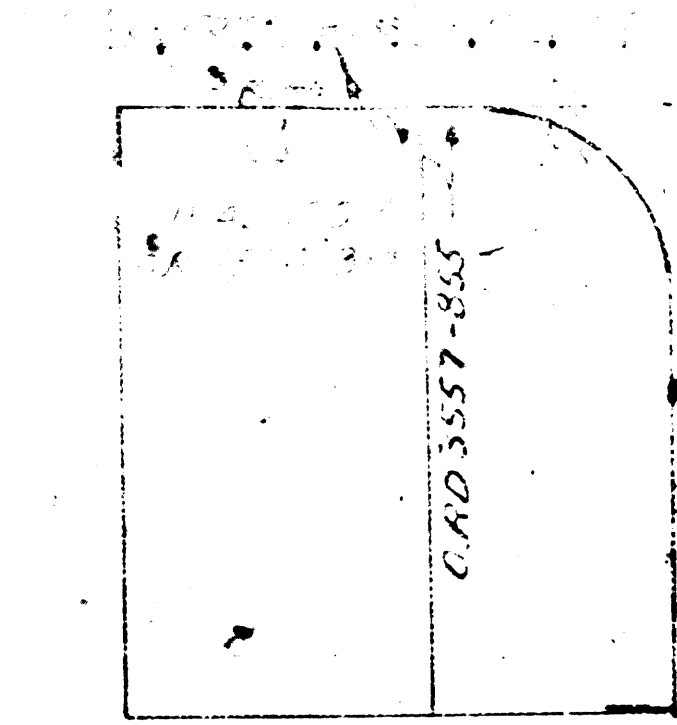
C.R.D. 2810-395  
C.R.D. 9026-111 (Cur)

EUCALYPTUS ST  
REC.

SAN PEDRO STREET

C.R.D. 3233-283

WASHINGTON ST



GLADSTONE ST

C.R.D. 2911-518

27

SAN PEDRO ST

23' 5 1/2"  
23' 5 1/2" 30'

17995  
A S H A

5' 9" at N.W. Corner  
Clark and Chestnut

5' 9" at S.W. Corner  
Clark and Chestnut

5' 3" at N.W. Corner  
Southern and Chestnut

Weed Meadow

20' 5" Concrete Pavement  
With 4" Disintegrated Concrete Base  
with Shoulders

CLARK AVE

SOUTHERN AVE

AVENUE

SOUTHERN AVE

WESTERN AVENUE

Peppers and Eucalyptus Trees

4' sidewalk  
4' Parkway  
4' Driveway

Found old spike

PLAN 1170952

46 OF 48



E-52-154-01-01-157

130' SOUTHERN AVE

0.34' 100' - 155

90° 16'  
09° 52' 30"

179° 57' 30"

178x100

134' 10"

10' 0" 10' 0"

10' 0" 10' 0"

10' 0" 10' 0"

10' 0" 10' 0"

10' 0" 10' 0"

E 56 232  
E 55 232

C.R.D 2764-807 (FJ) P-7

AVE.

WESTERN

CARTER

22' 5" Macadam Pavement

22' 5" Oiled Macadam Pavement with  
6' 5" Disintegrated Granite Base and Shoulders

Note:  
One span Wooded bridge with  
center span 14' 0" and 2' ends  
Ends 10' 12" timbers, Double floor 2' 12"

O.R.D 3540-45

STREET

STRAWBERRY

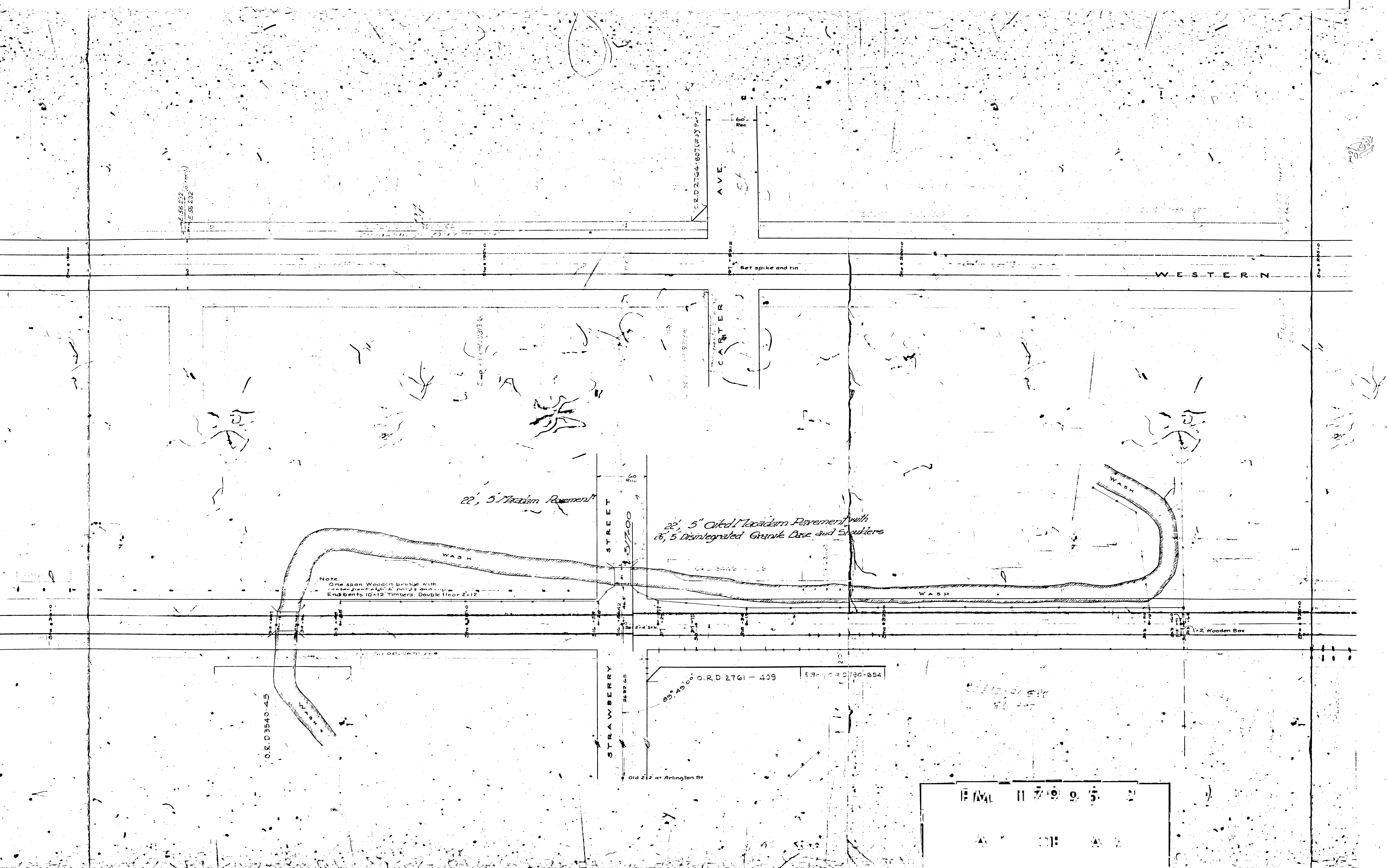
O.R.D 2761-409

E 1911 O.R.D 730-654

Old 212 at Arlington St

11 7 9 9 5 2

11 7 9 9 5 2



STERN AVENUE

ROSECRANS AVE.

ROSECRANS

CORWIN STREET

WESTERN AVENUE

20' 5" Concrete Pavement  
With 4" 4" Disintegrated Granite Base  
and Shoulders

22' 5" Oiled Macadam Pavement

179952  
A 8 OF A 8

72

1/2" Wooden Box

STREET

NANCE

2" Iron pipe

2 1/2" Stake

6" Stake

Set 2' 12" 0"

Set 2' 12" 0"

Set 2' 4" 0"

Set 2' 12" 0"

Set 2' 12" 0"

89° 55' 00"

90° 00' 00"

89° 55' 00"

89° 55' 00"

215' 400

100' 21000

100' 21000

179952  
A 8 OF A 8



20' 5" Concrete Pavement  
With 24" 4" Disintegrated Granite Dese  
and Shoulders

22' 5" Oiled Macadam Pavement

22' 5" Macadam Pavement with  
26" 5" Disintegrated Granite Dese  
and Shoulders

Eucalyptus Trees

CITY BOUNDARY

72

11	7	9	5	2
A	9	O	A	9