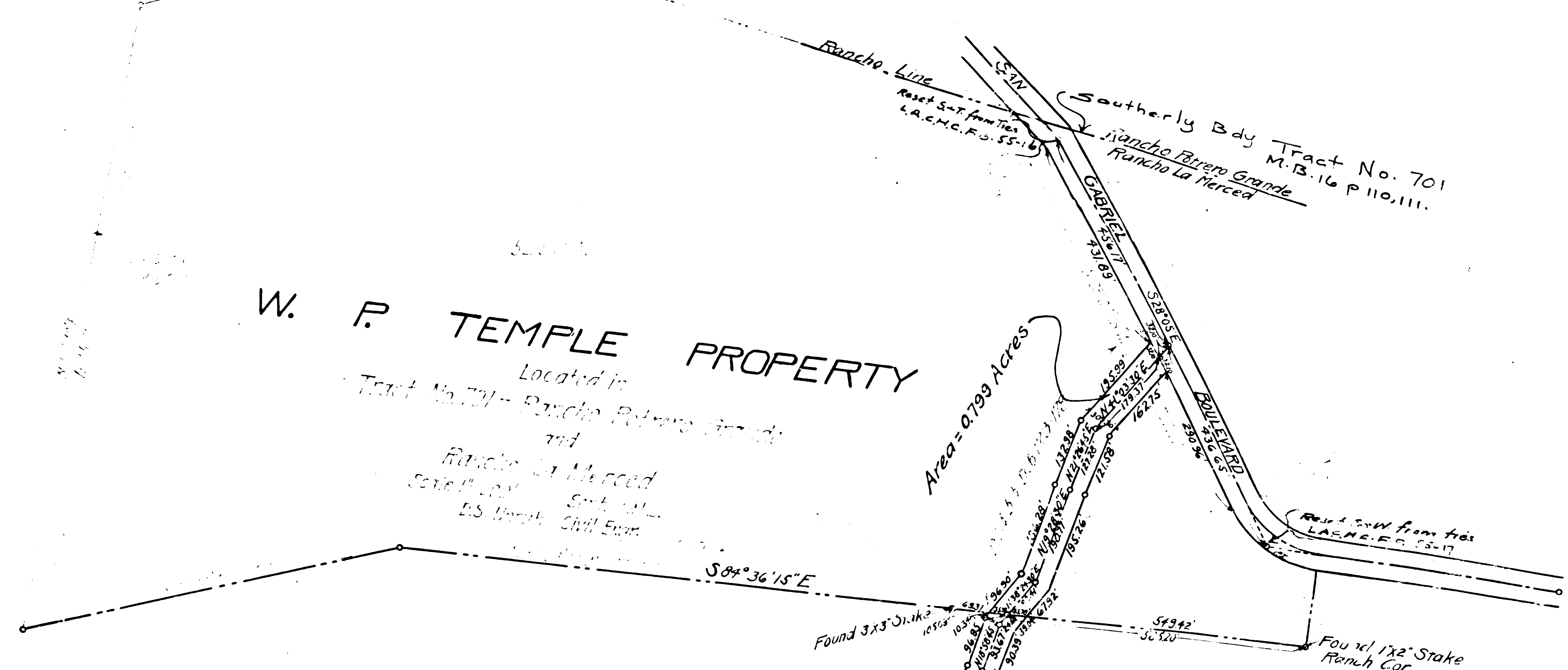
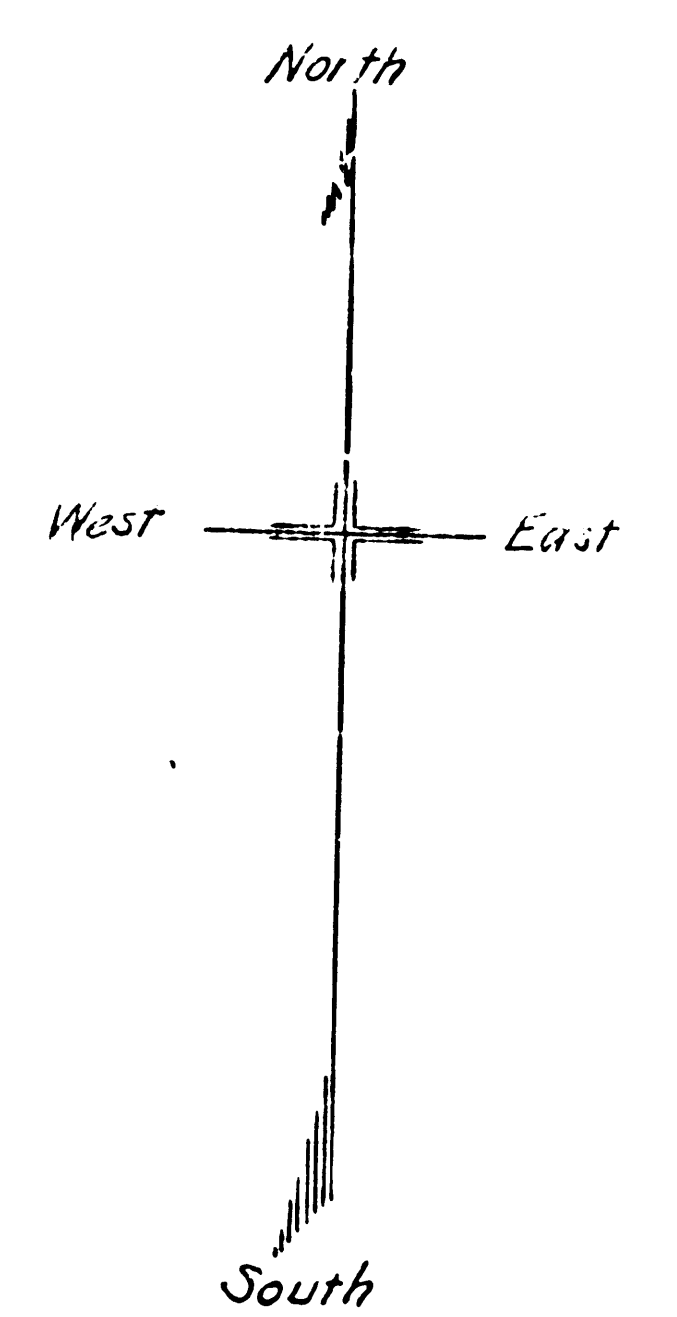
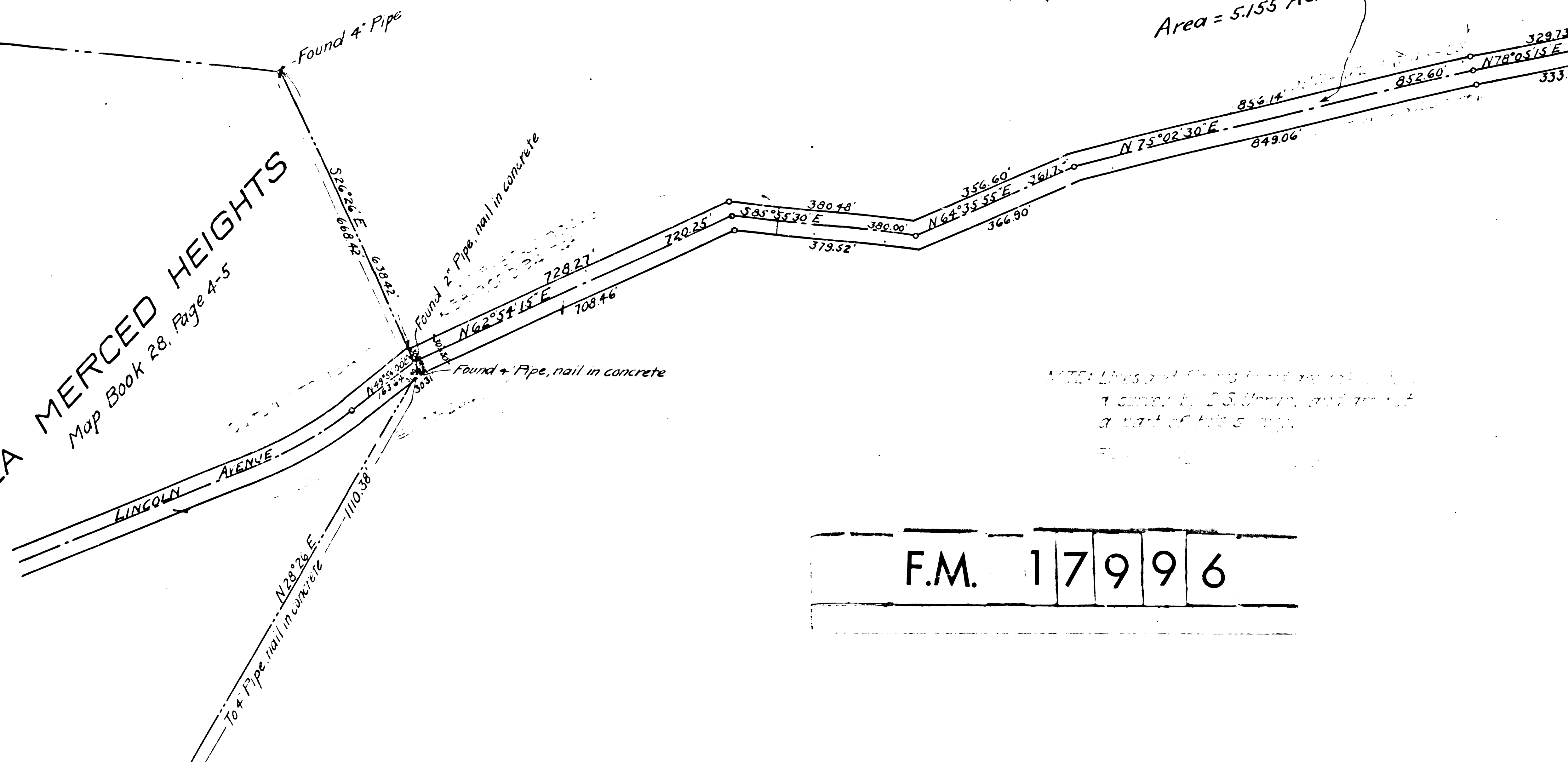


Rancho Potrero Grande



RANCHO LA MERCED
 (C.S. Map No. 3603; Patents, Book 13, Page 16.)
 Property of Heirs of E. J. Baldwin.
 Area = 5.155 Acres

LA MERCED HEIGHTS
 Map Book 28, Page 4-5



Note: Side stakes set are shown by o

Map of
EXTENSION OF LINCOLN AVENUE
 From La Merced Heights to San Gabriel Boulevard
 in Rancho La Merced
 LOS ANGELES COUNTY ROAD DEPARTMENT
 Scale: 1"=200'
 Mar. 2, 1915.

Made by HEG
 Checked by WJK, NJB

M3A M.J. 1355
 F.M. 17996

F.M. 17996