

SAN

5/8 of NE 1/4
Mary Cooper

TIN R17W

1/2 of SE 1/4
George & G. Tuso

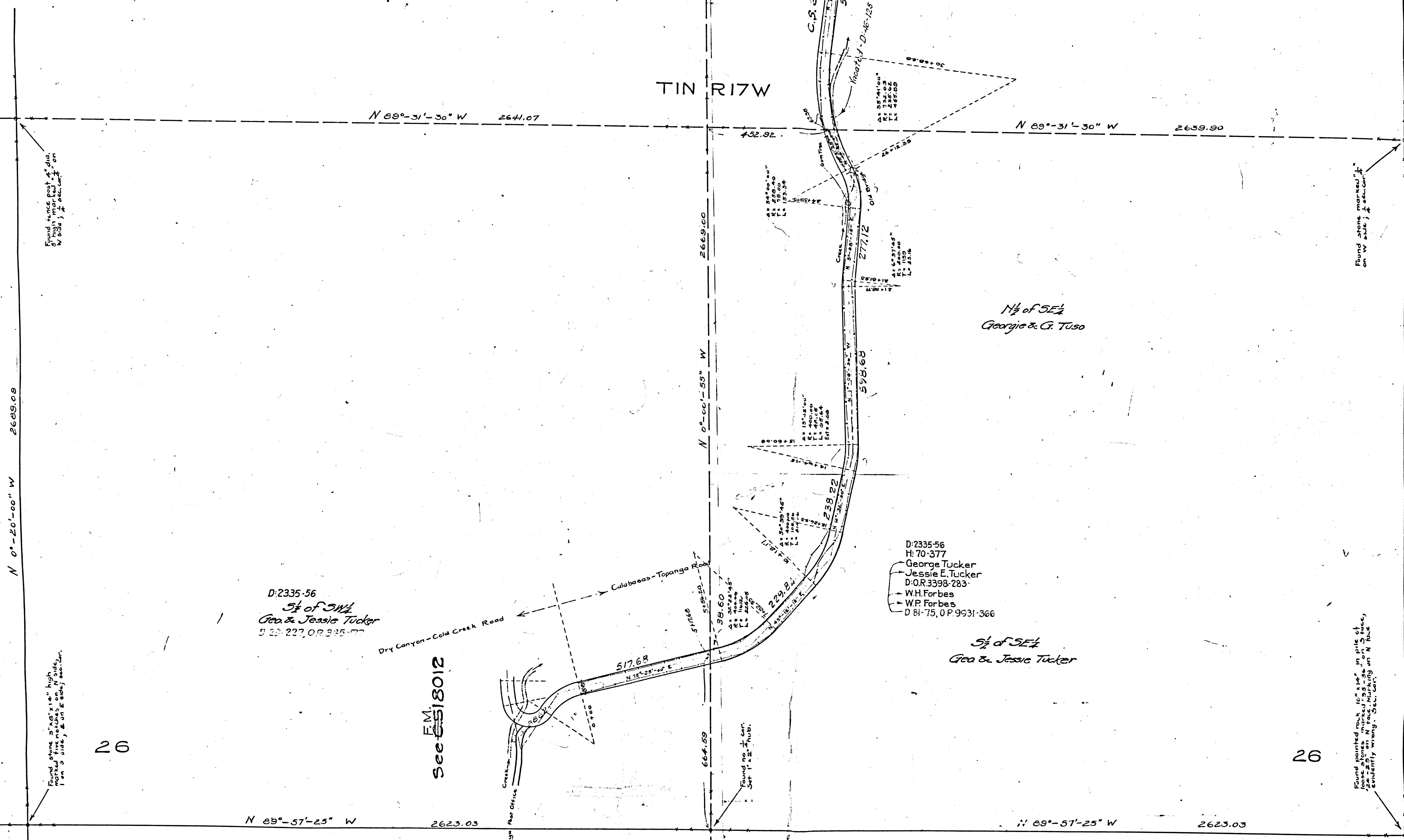
5/8 of SE 1/4
Geo & Jessie Tucker

D:2335-56
5/8 of SW 1/4
Geo & Jessie Tucker
D:23-227, O.R. 9931-366

- D:2335-56
- H:70-377
- George Tucker
- Jessie E. Tucker
- D:O.R. 3398-283
- W.H. Forbes
- W.P. Forbes
- D:81-75, O.P. 9931-366

F.M.
See 6518012

F.M.	18011-1
A1	OF A2



Found fence post 4" dia,
6" high marked "1" on
N side, & "2" on E side.

Found three "20" x "14" high
marked five notches on N side,
1 on S side, & on E side.

Found stone marked "1"
on W side, & "2" on E side.

Found pointed rock 16" x 14" in pile of
logs, stone marked "1" on S side,
evidently wrong in Section.

27

26

26

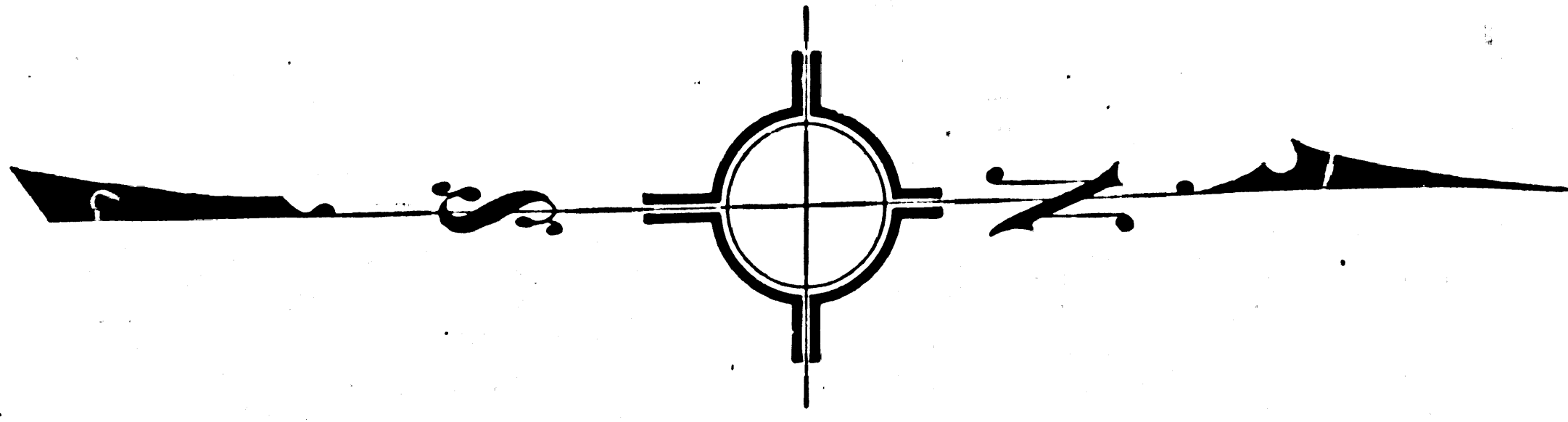
25

34

35

35

36



F.M. 18011-11
A 2 OF A 2

PORTION CALABASAS-TOPANGA ROAD SHOWING ALIGNMENT

FROM
SAN FERNANDO RANCH LINE TO BEGINNING OF DRY CANYON-COLD CREEK ROAD
LOS ANGELES COUNTY ROAD DEPARTMENT REF 51064

LOCATION by SKEGGS
L.A. COUNTY ROAD DEPT
FIELD WORK by BOWEN Aug. 7, 1915.
OFFICE WORK by FISHER Aug. 23, 1915.
CHECKED by Mr. Alger & Gore Sept. 1915

1M60

FIELD BOOK Z201
FIELD BOOK ZH 217b
LEVEL BOOK

SCALE - 1" = 200 FT.

APPROVED _____ 191____
ROAD COMMISSIONER

Calabasas-Topanga Rd. chg. to Old Topanga Canyon Rd. D: 49-32 R.B. 40-94

