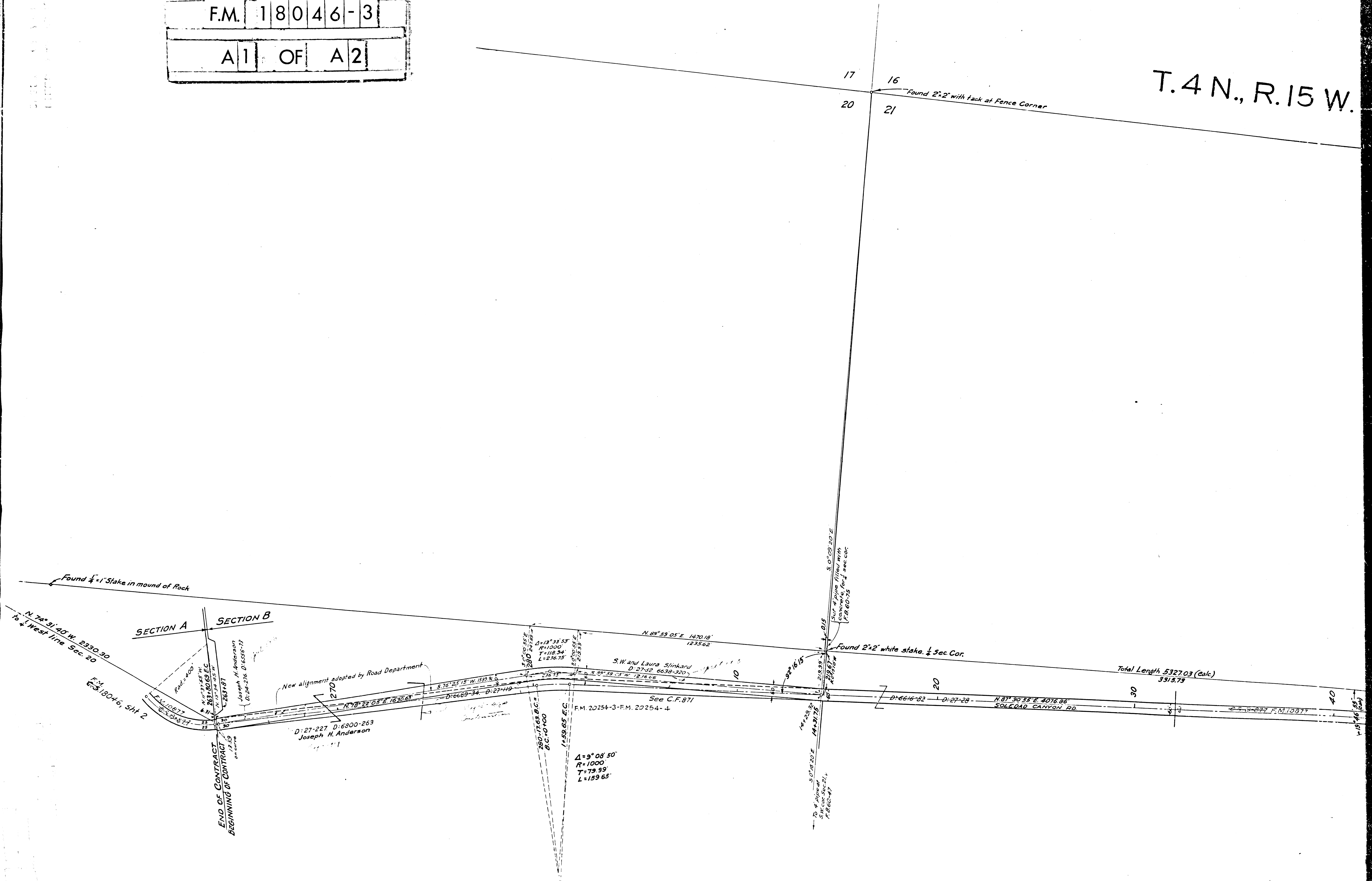
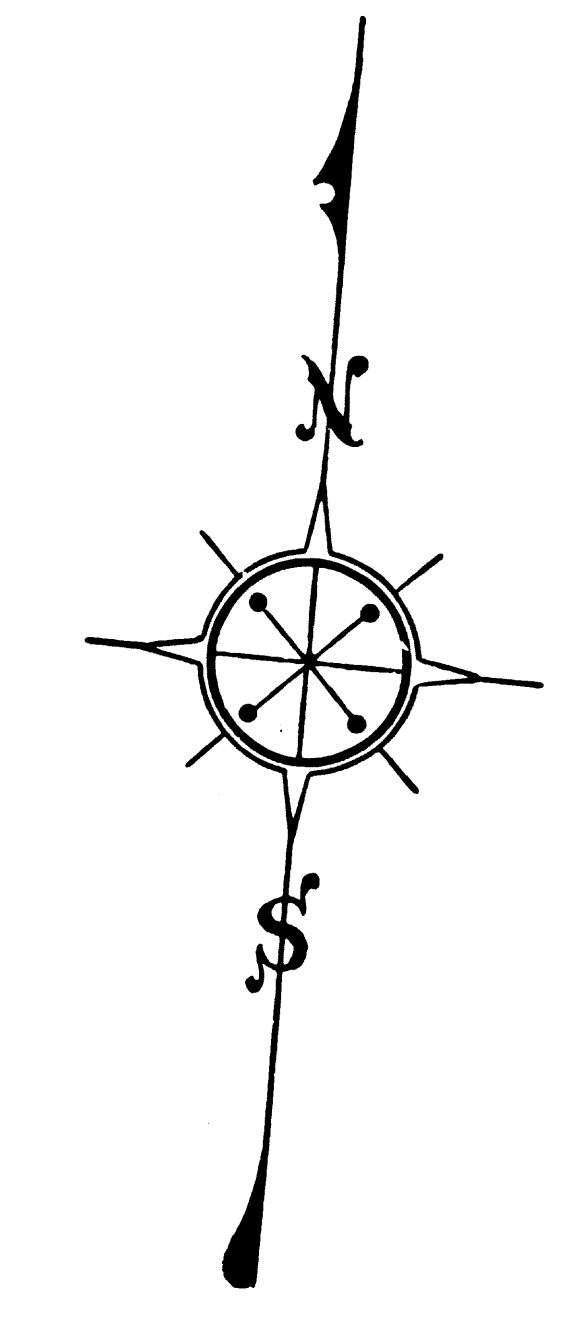
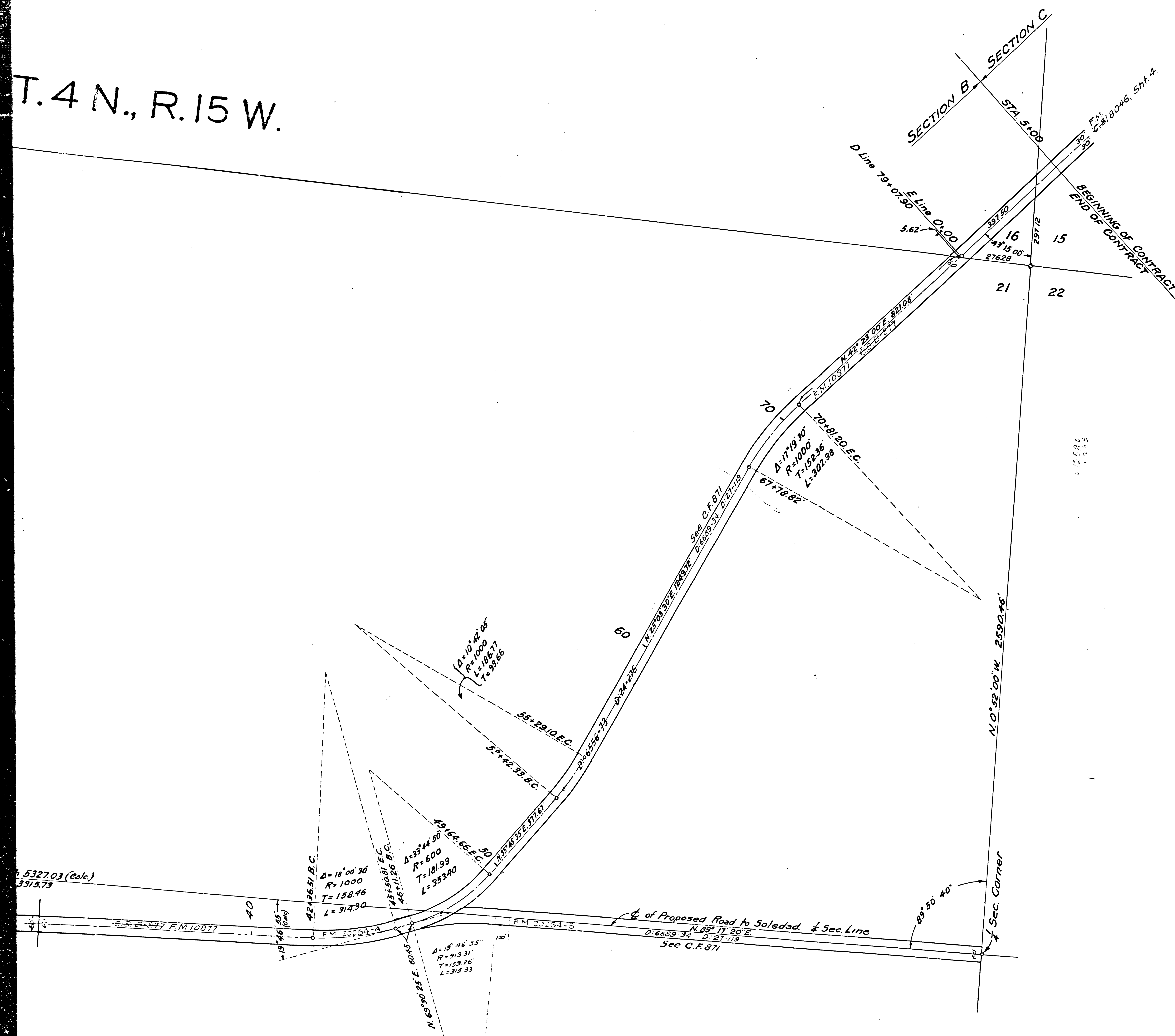


F.M. 18046-3
 A1 OF A2

T.4 N., R.15 W.



T. 4 N., R. 15 W.



MINT CANYON ROAD

ALIGNMENT OF WORK TO BE DONE ON

SECTION "B"

OIIIA-2

LOS ANGELES COUNTY ROAD DEPT

FIELD WORK PATTERSON SCALE 1"=200'

OFFICE WORK C.R.H. & J.H.C. 1-14-16 & 3-30-16

CHECKED BY APPROVED 191

ROAD COMMISSIONER

THIS DRAWING AND DATA HEREON ARE HEREBY MADE A PART OF THE SPECIFICATIONS

M.C.L.
 Mint Canyon Rd. changed to Sierra Highway - D:43-158
 Por Sierra Highway changed to Soledad Canyon Rd E:49-18
 NOTE: BEARINGS ARE BASED ON SOLAR OBSERVATIONS TAKEN NEAR
 WEST LINE, SEC. 19, T.4N., R.15W., S.B. & M. PER SHT. 1, COUNTY SURVEYOR.

F.M.	1	8	0	4	6	-	3
A	2	OF	A	2			