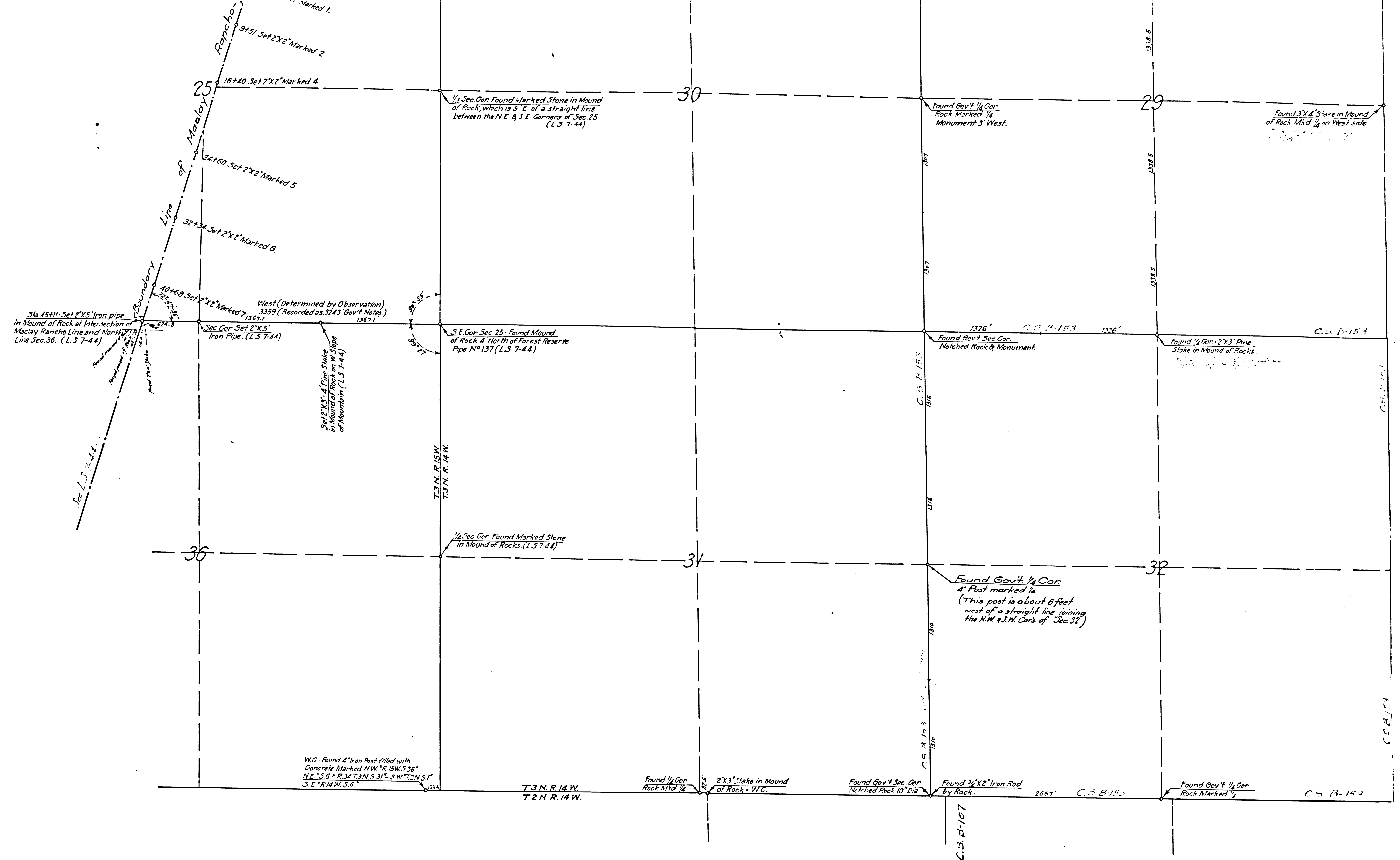


F.M. 18067
A 1 OF A 2

W.G. - Found 4' Iron Post filled with
Concrete Marked NW 1/4 SW 1/4 Sec. 36
NE 1/4 S. 67° 17' 31" SW 1/4 S. 11° 15' 11"
S. E. 1/4 N. W. 1/4

C.S. B-107

C.S. B-153



Map

Showing

SECTION RANCH CORNERS

found in

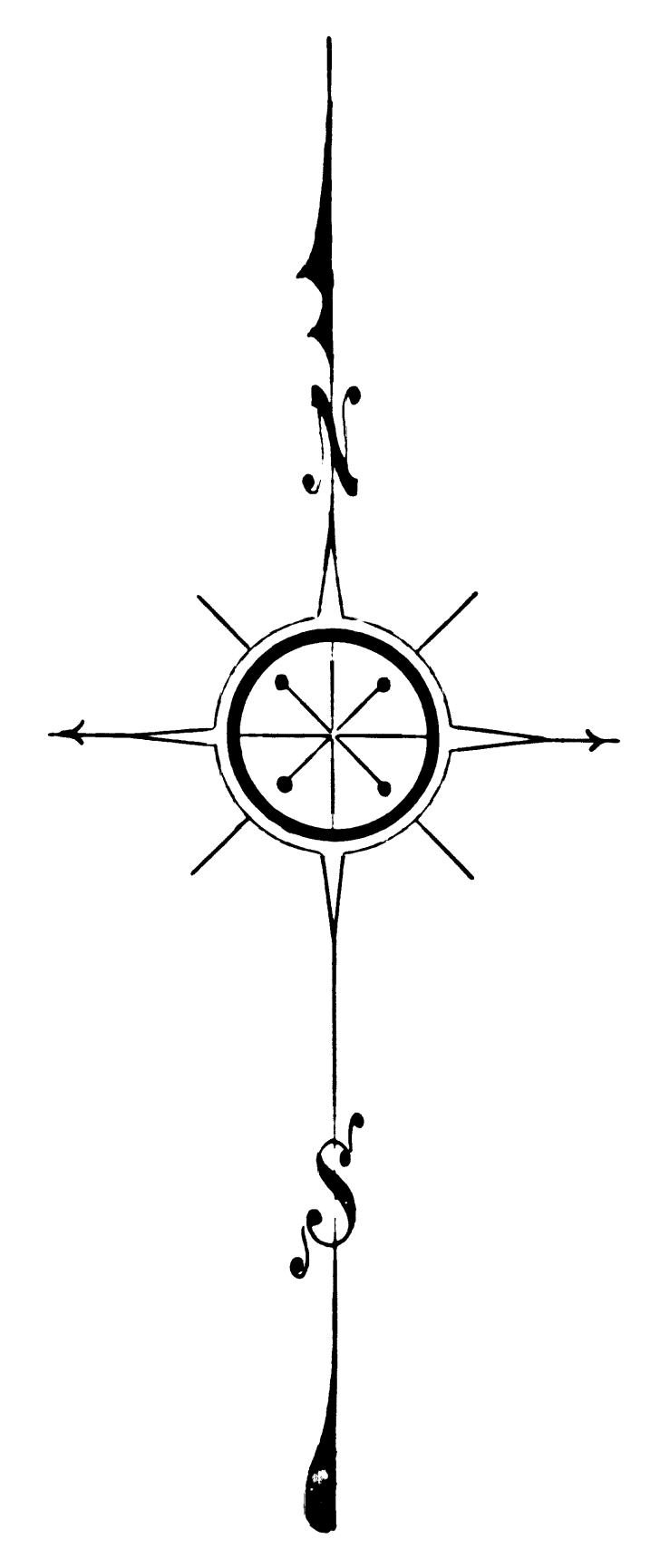
T. 3 N., R. 14 & 15 W.

Compiled from field notes and maps of surveys made by S.G. Chamberlin (City Engineer of San Fernando) in 1916 & 1917

J.E. Rockhold County Surveyor

Scale: 1 in. = 600 ft.

Map made by Warren checked - Comly



F.M.	1	8	0	6	7
A	2	OF	A	2	