

# LOS ANGELES COUNTY ROAD DEPT.

## MAP SHOWING ALIGNMENT

Of

Lake Shore Dr. & Portion of Arroyo Drive

S 19272

Scale 1-In. = 100 Ft.

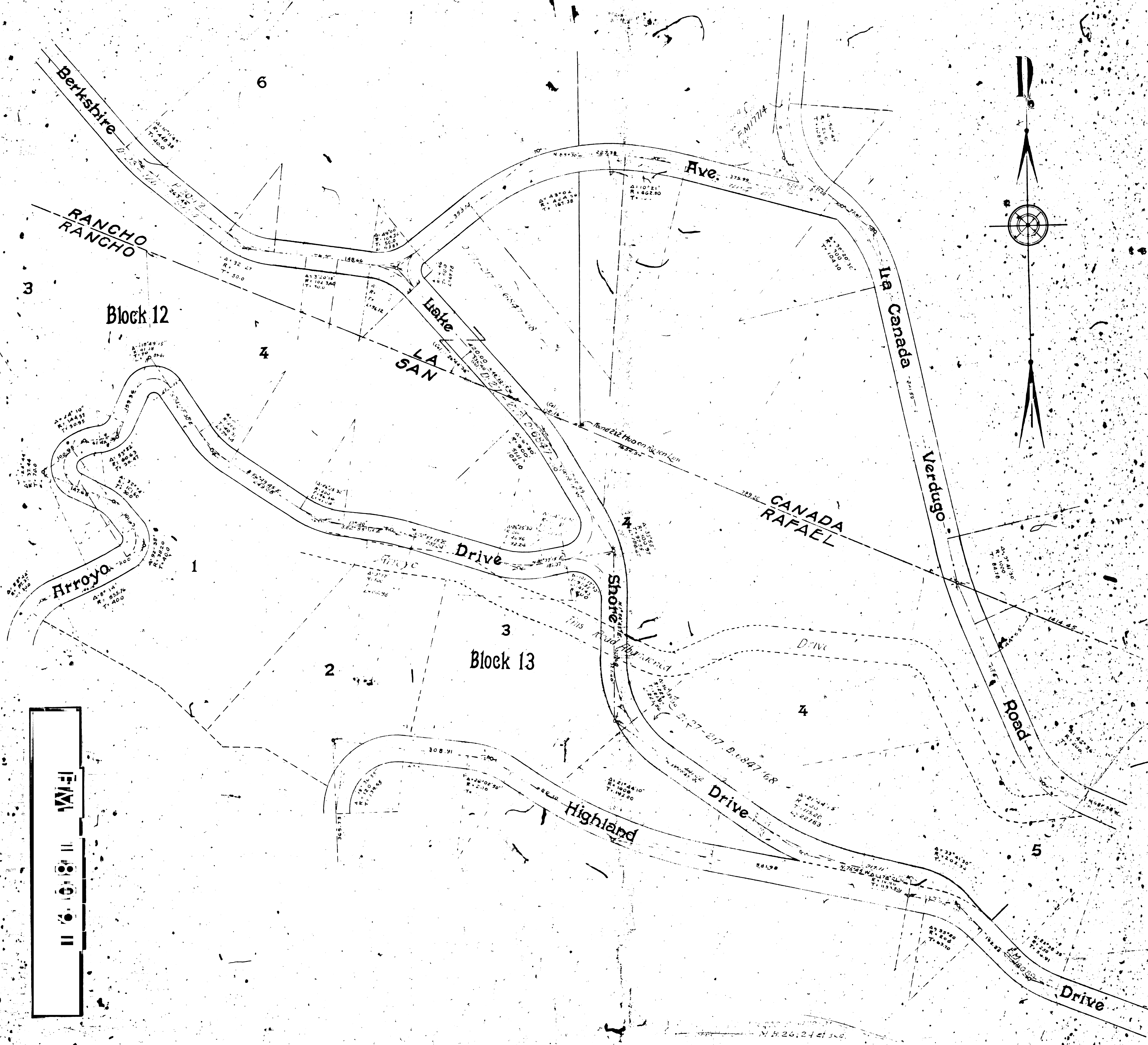
Field work by SWAN WIGGON  
Office C. BECK-MEYER  
Checked SWAN WIGGON

Field book No. 5247  
References - C.S. 7723  
Flintridge, p. 20-21

Approved

Road Commissioner

INDEX 418 86



1/4" = 100'

N 26, 24 et seq.