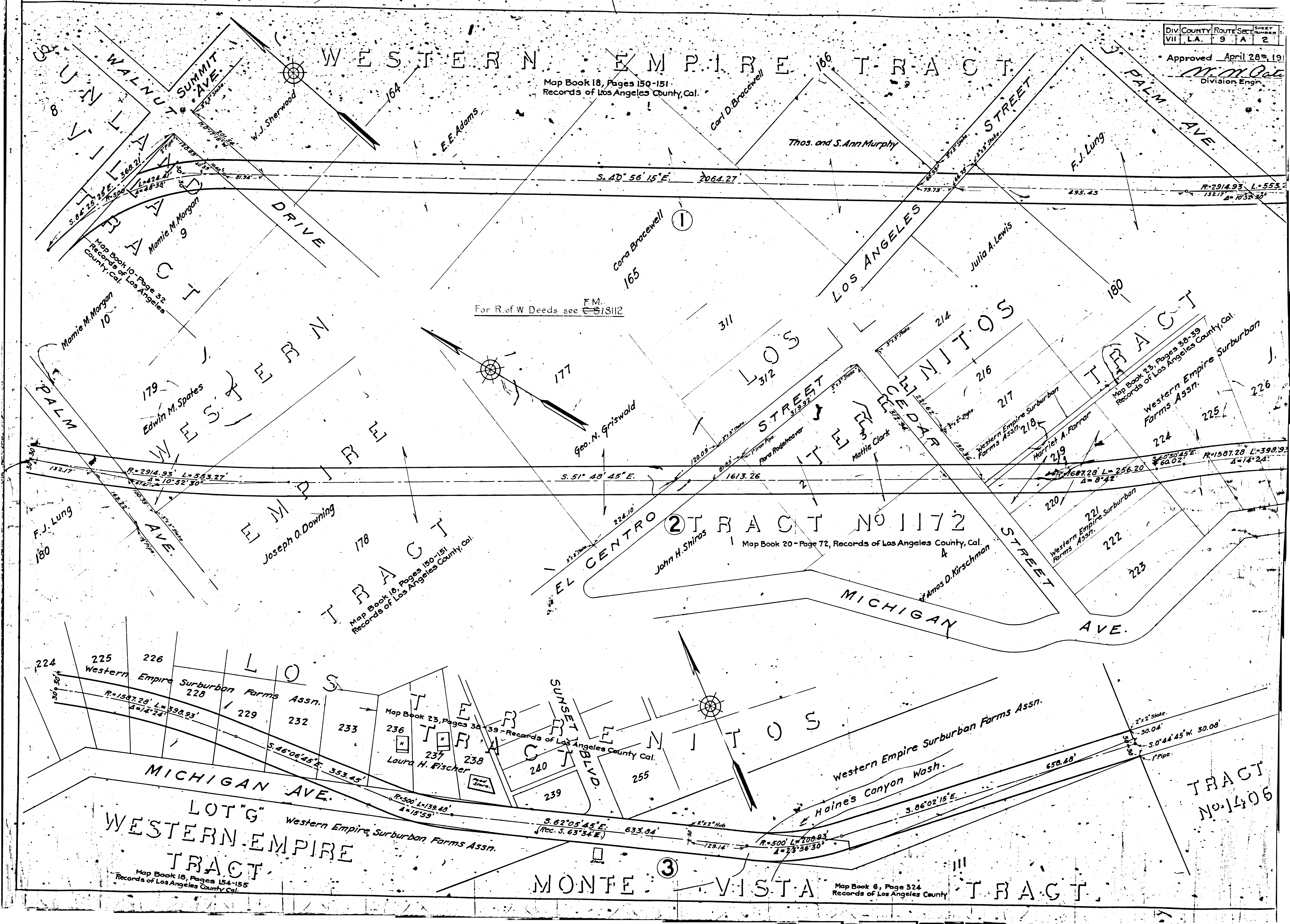


Approved April 28th, 1911

M.M. O'Connell
Division Engineer

Map Book 18, Pages 150-151
Records of Los Angeles County, Cal.



For R. of W Deeds see F.M. 51812

Map Book 20 - Page 72, Records of Los Angeles County, Cal.

Map Book 18, Pages 150-151
Records of Los Angeles County, Cal.

Map Book 23, Pages 38-39 - Records of Los Angeles County Cal.
Laura H. Fischer

Map Book 18, Pages 154-155
Records of Los Angeles County, Cal.

Map Book 6, Page 324
Records of Los Angeles County