

Relinquished by State Highway - 46-274, O.R. 12986-210

- NOTE -

For filing as reference with Right of Way Deeds.
A copy of this map is on file in the office of the
County Surveyor of Los Angeles County, Cal, and
known as County Surveyor's Map No. 3104.
For deed to this entire strip, see Deed 253 D. 129-214.

CALIFORNIA HIGHWAY COMMISSION

DIV.	COUNTY	ROUTE	SECTION
VII	L.A.	4	C and D

RIGHT OF WAY
ACROSS THE N. 1/2 - N.W. 1/4 - SEC. 32 - T. 8 N.
R. 17 W. - S. B. B. & M.
LOS ANGELES COUNTY, CALIFORNIA.
SCALE 1" = 100' DEC. 1916.

H.F.R.

T-8 N. R-17 W. - S. B. B. & M.
Sec. Cor. of intersection of fences

8' x 8' post

31.30
32.29

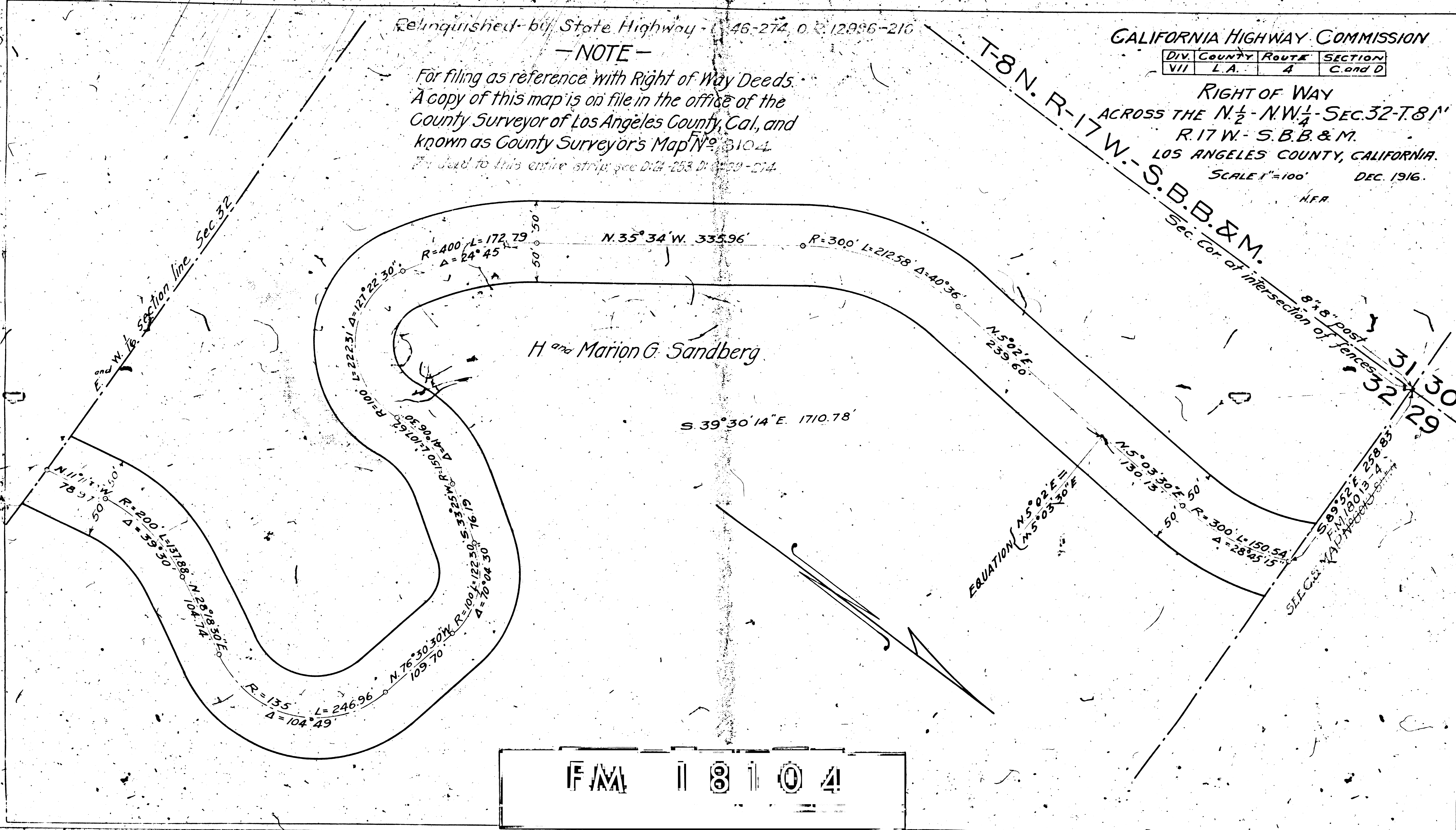
H and Marion G. Sandberg

S. 39° 30' 14" E. 1710.78'

EQUATION (N 5° 02' 45" E
1730.13')

S 89° 32' 21" E 298.83'
E.M. 190/3
S.E.C.S. MAP 1916

F.M. 18104



Section line Sec. 32

N. 11° 11' W. 50'
78.97

R=200 L=137.88 Δ=35° 50'

N. 25° 18' 30\" E. 104.14

R=135 L=246.96 Δ=104° 49'

N. 76° 30' 30\" W. 109.70

R=100 L=122.50 Δ=76° 04' 30\"

S. 33° 25' 50\" W. 16.19

R=150 L=107.62 Δ=14° 06' 30\"

R=100 L=222.31 Δ=121° 22' 30\"

R=400 L=172.79 Δ=24° 45'

R=300 L=212.58 Δ=40° 36'

N. 5° 02' 45\" E. 239.60

N. 5° 03' 30\" E. 1730.13

R=300 L=150.54 Δ=28° 45' 15\"

S. 89° 32' 21\" E. 298.83'

E.M. 190/3