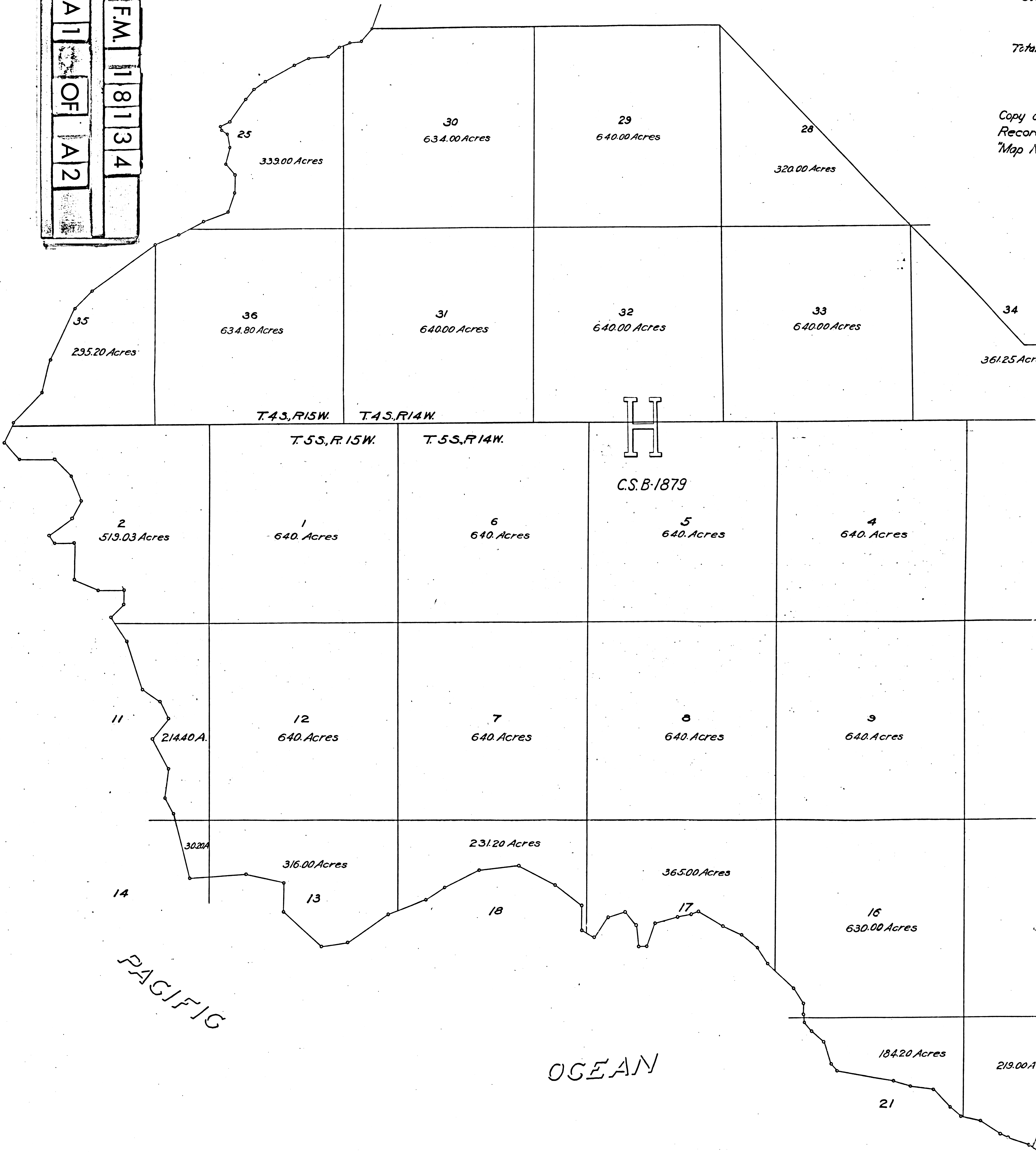


Map of
of the partition
Distric
So

Total

Copy of
Record
Map

F.M. 118134
A 1 OF A 2



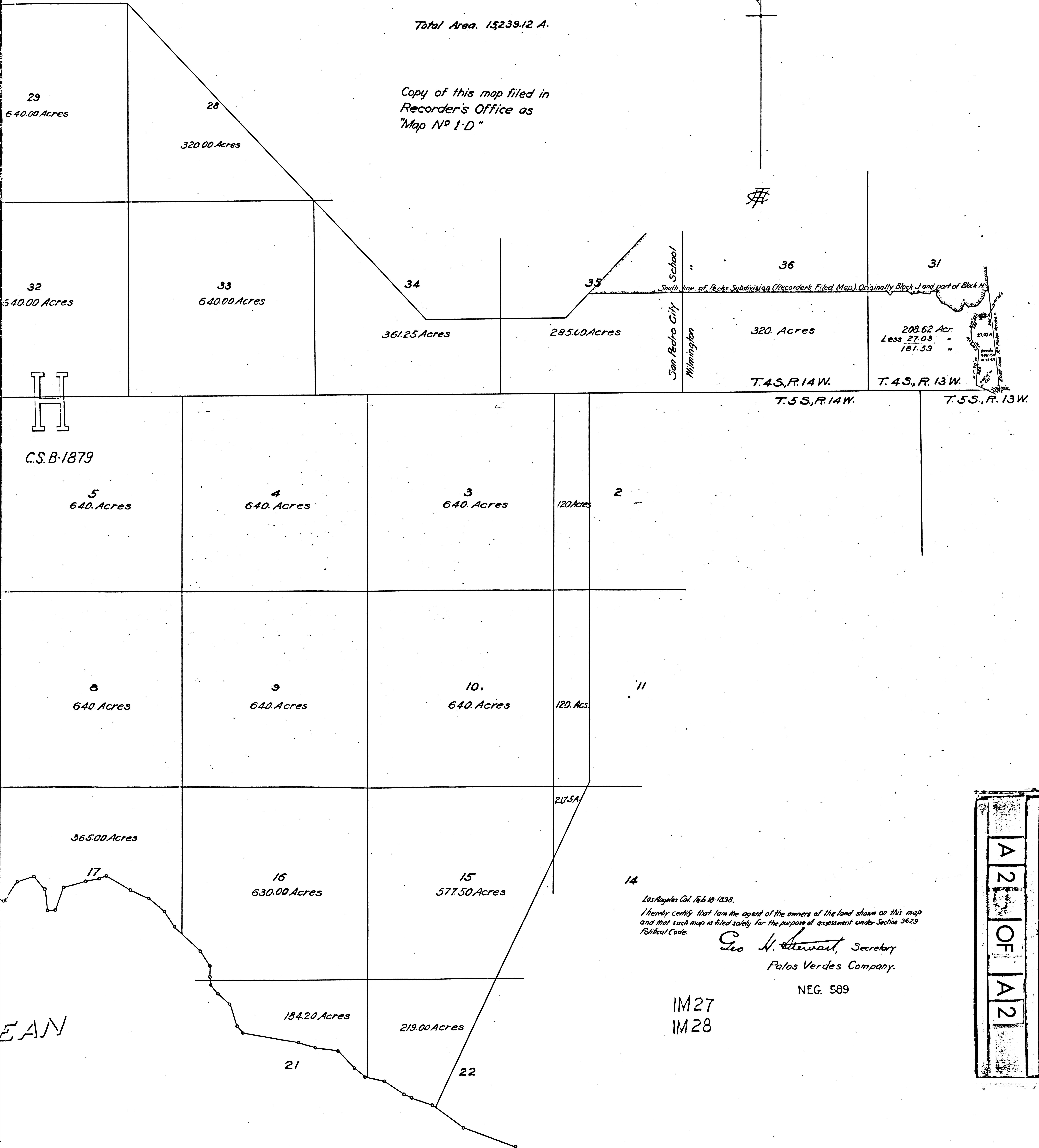
PACIFIC

OCEAN

Map of part of Block H
of the partition of the Rancho Los Palos Verdes
District Court Case 2373
Scale, 20 Chs.=1 inch.

Total Area, 15,239.12 A.

Copy of this map filed in
Recorder's Office as
"Map No 1-D"



Los Angeles Cal. Feb 18 1898.
I hereby certify that I am the agent of the owners of the land shown on this map
and that such map is filed solely for the purpose of assessment under Section 3629
Political Code.

Geo. H. Stewart, Secretary
Palos Verdes Company.

NEG. 589

IM27
IM28

