

N 07° 36' W, 212' 00" to the top of the 23' high monument  
17' 10" N 15' W, from which a line 23' long bears  
N 75° 45' E 65' 00" to the top of the 23' high monument  
was established every 10' through the station  
was capped with a 2" iron cap, the following markings  
7 10 4 3 7 6 7

Found Stone Sec. Corn.  
marked with iron nails  
on the South & West

One Tree 14" Dia  
Bears S 67° 12' E, 37' 00"  
Marked "T 9 N Rio 106 BT"

Set 2 pipe for Cor. 34, also witness  
post 4" high, 7" wide, marked "T 9 N  
on NW 33 on SW, 102 on S 2 1/2 E 20"

Set 2 pipe for Cor. 1  
Witness post 2" high, 7" wide,  
marked "S 111.90"

Set 1 pipe

Set 1 pipe

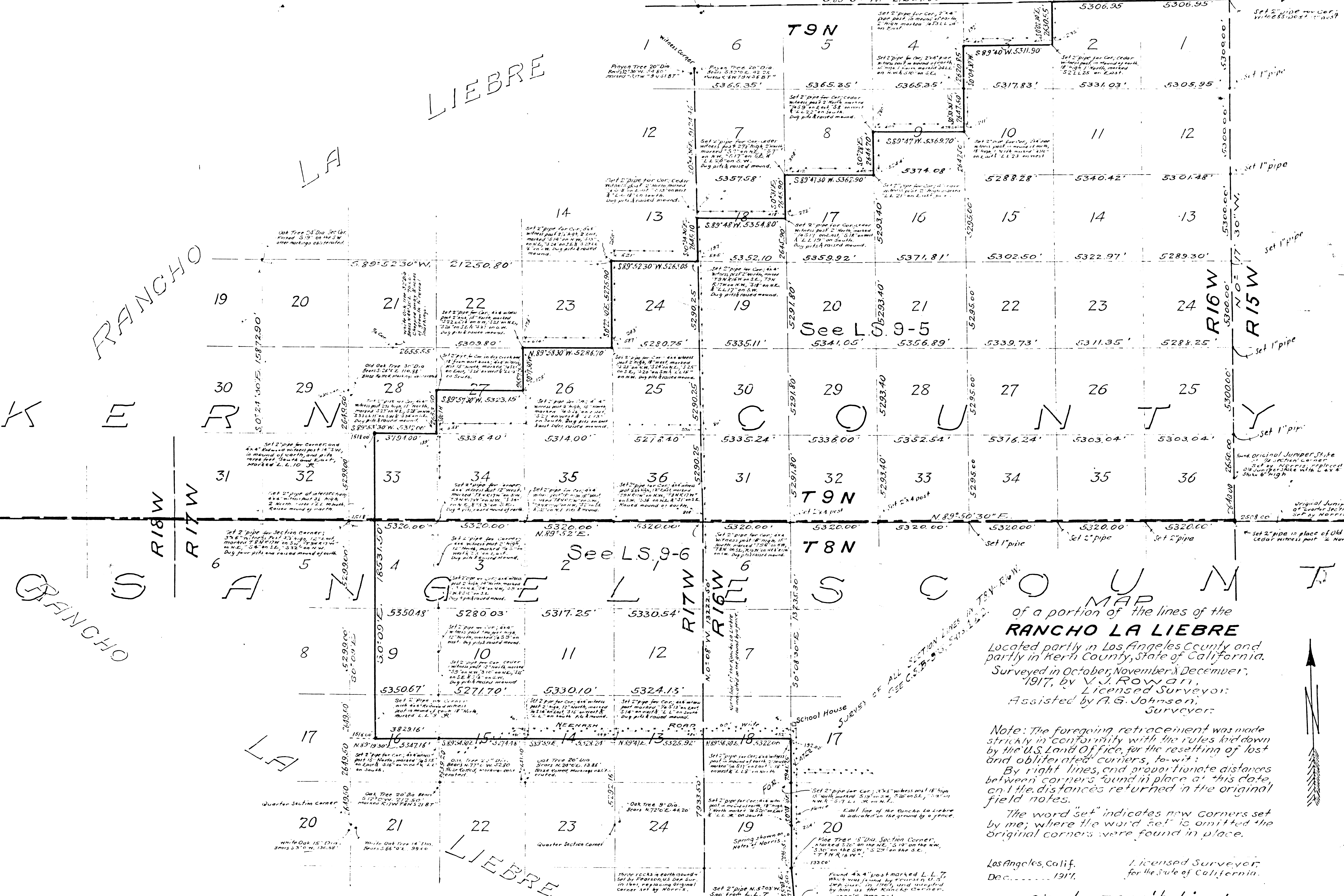
Set 1 pipe

Set 1 pipe

Set 1 pipe

Original Juniper Stake  
at Section Corner  
Set by Morris, replaced  
by Juniper Stake with 2 x 4  
6" high

Set 2 pipe in place of Old Stake,  
cedar witness post 2" North



MAP  
of a portion of the lines of the  
**RANCHO LA LIEBRE**  
located partly in Los Angeles County and  
partly in Kern County, State of California.  
Surveyed in October, November & December,  
1917, by **V. J. Rowan,**  
Licensed Surveyor;  
Assisted by **A. G. Johnson,**  
Surveyor.

Note: The foregoing retracement was made  
strictly in conformity with the rules laid down  
by the U.S. Land Office, for the resetting of lost  
and obliterated corners, to-wit:  
By right lines, and proportionate distances  
between corners in place at this date,  
and the distances found in the original  
field notes.  
The word "set" indicates new corners set  
by me; where the word "set" is omitted the  
original corners were found in place.

Los Angeles, Calif. Dec. 1917. Licensed Surveyor  
for the State of California.

Scale: 3000' to 1 inch.  
Shts. 7-13

F.M. 18195