

MAP OF
SECTION 11
 TOWNSHIP 4 NORTH, RANGE 15 WEST

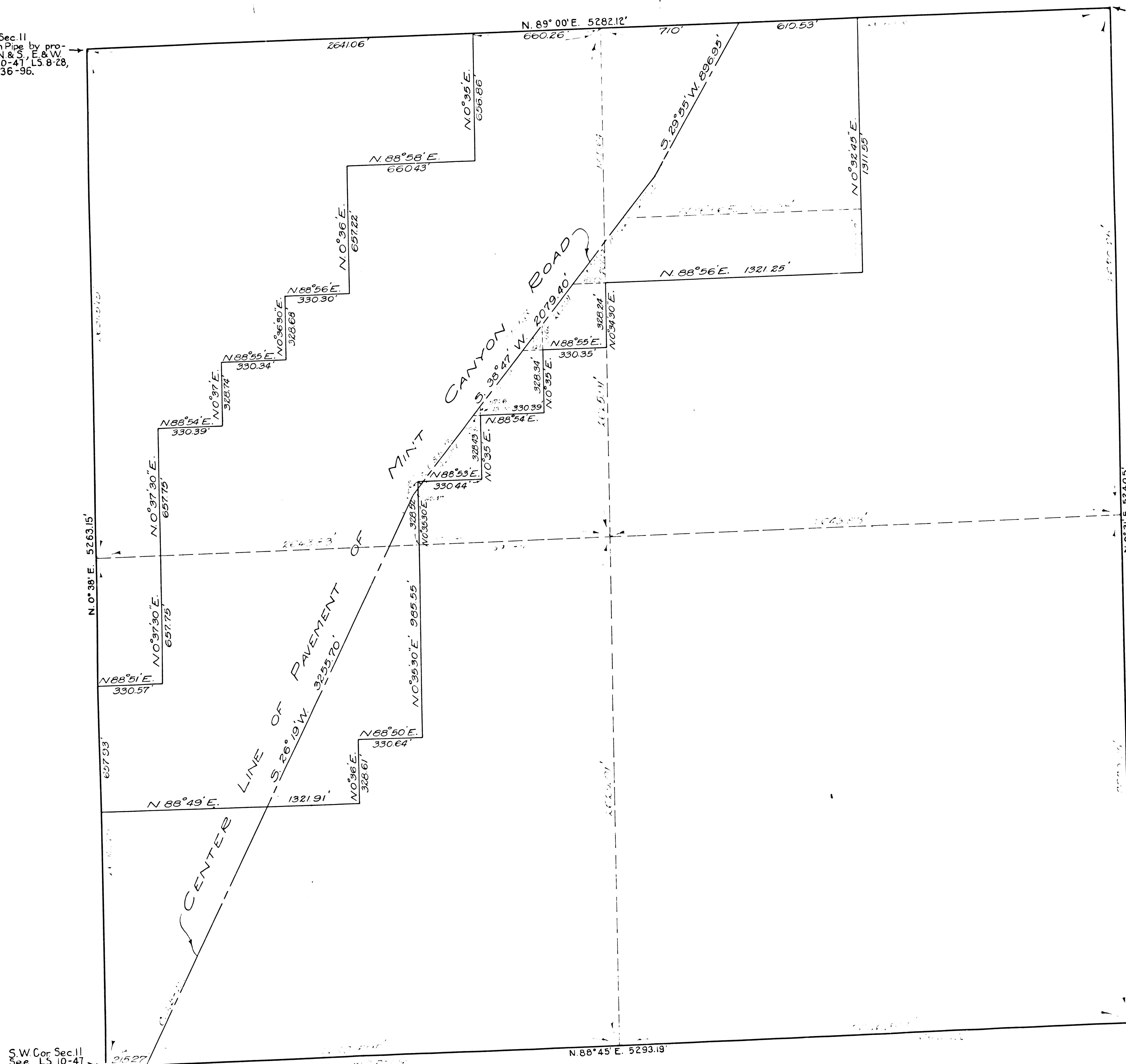
Compiled by County Surveyor Jan. 1921
 from notes and maps of survey, made
 by Charles E. Bailey, Licensed Surveyor,
 in 1917.

Scale 1 inch = 300 ft.

Note - Lines and figures shown in black are from Mr.
 Daileys maps and notes. Figures shown red were cal-
 culated by the County Surveyor from the data shown
 in black.

N.W. Cor. Sec. 11
 Set 2" Iron Pipe by pro-
 portion, N. & S. E. & W.
 See L.S. 10-47, L.S. 8-28,
 and M.B. 36-96.

N.E. Cor. Sec. 11
 Set 2" iron pipe by pro-
 portion, N. & S. E. & W.
 See L.S. 10-47, L.S. 8-28
 and M.B. 36-96.



S.W. Cor. Sec. 11
 See L.S. 10-47

S.E. Cor. Sec. 11
 See L.S. 10-47

F.M. 18251