

Found old 4x4
Juniper stake 1 high
NW Cor. Sec. 7

2395.43'
S 89° 04' 16" W 2184.23'
This distance in error. For correct distance see C.S. E-172

Found old Juniper stake 2 high marked 4 5 on
north and south faces, Ben Lever with base fixed in rock mound
4 section corner on north line Section 7

539° 27' 30" W 2655.96'

Found old 4" Juniper stake
2 high with #12" cut in and
1x6" Stone at base
Set for NE cor. Sec 12 T. 5N. R. 11W.
True NE cor. of Sec 12 is at the
point where a straight line
drawn from N. 1/4 cor. of Sec.
12 through this stake inter-
sects west line of Sec. 7
as show on this map.

D: 3521-81
D: 3443-240
Mrs. William E. Young
D: 5902-179
Palmdale Water Co.
D: 33-81-O.R. 2938-138

SEC. 7, T. 5N. R. 11W. S.B.M.

D.O.R. 228-97
Robert A. Mc Adam Jr.
Ruby F. Mc Adam
T.O.R. 242-19
T. Ins. & Trust Co.
D: 5902-179
Palmdale Water Co.
D: 33-81-O.R. 2938-138

F.M.	18267
A 1	OF
A 2	

Found 3 1/2" RW stake 2 1/2 high, with
6 notches on East face, 2 on North
face and 4 on South face and
portions of old original
stake in Rock mound.
SW Corner Section 7

2440.21'
N 80° 31' 35" E 2846.75'
This distance in error. For correct distance see U.S. B-172

Found old Juniper stake 2 high
md. 4 5 on North face in Rock
mound
4 section corner on South line
Section 7

A 1
A 2
A 3

Iron marked 'S' on
live with base fixed in rock mound
in Section 7

Found 2" iron pipe see C.S. Map 8062 Sh. 1
N.E. Corner Section 7

389°22'38" W 2665.92'

1/4 Sec. Cor. not found

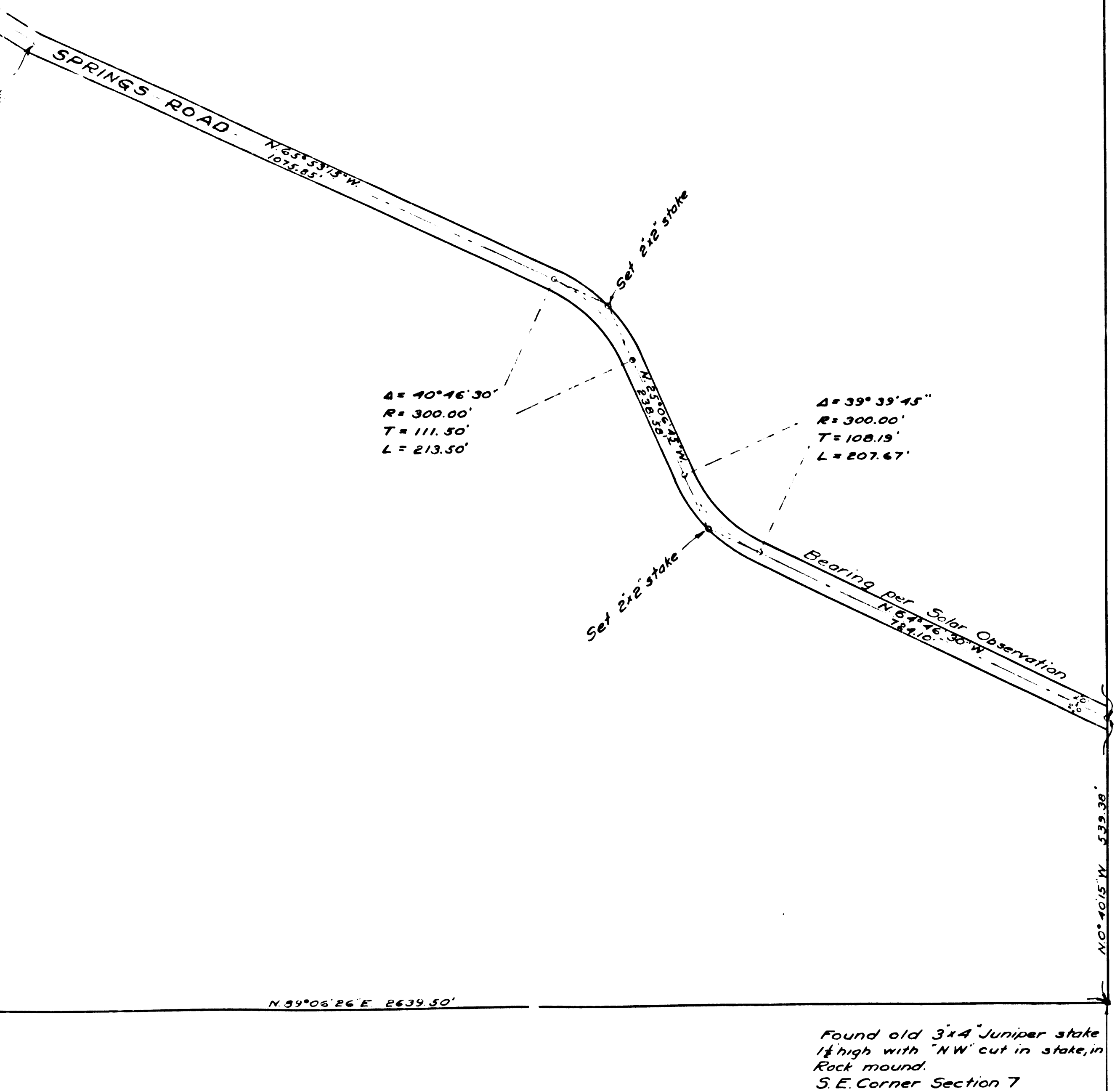
D.O.R. 288-47
Robert A. McAdam Jr.
Ruby F. McAdam
T.D.O.R. 242-19
T. Ins. & Trust Co.
D: 5905-179
Palmetto Water Co.
D: 33-81-O.R. 2938-138

MAP OF BARREL SPRINGS ROAD ACROSS SECTION 7, T.5N. R.11W. S.B.M.

SURVEYED BY COUNTY ROAD DEPT.
JULY 1920
SCALE: 1" = 200'
Bearings based on Solar Observation.
ROAD DEPT. FB FM 15-1 to 5

Field Work by G. F. Brown
Plotted by C. W. Spralle
Traced by J. D. Boyer Dep. Co. Sur.
Checked by Cobb Dep. Co. Sur.

F.M. 18267
A 2 OF A 2



Found old 3/4\"/>

