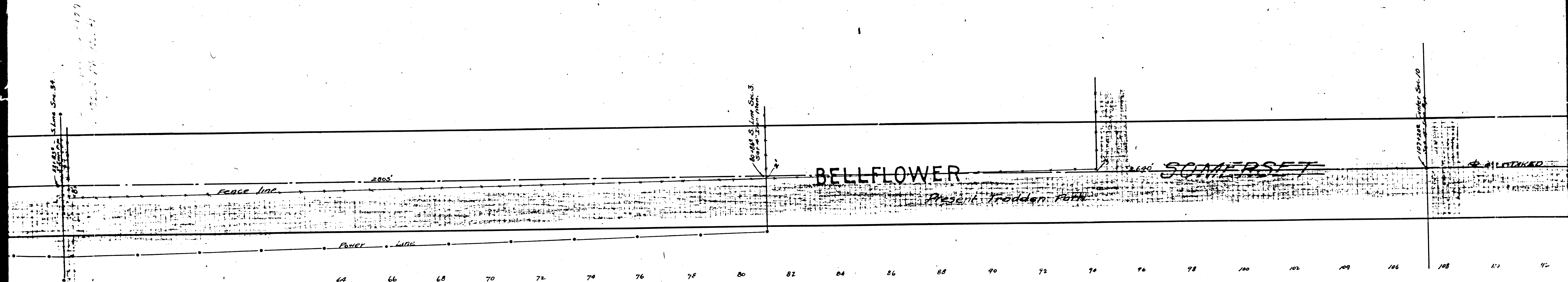


ished the County Surveyor by the  
Montana Land Co. July 7-1922



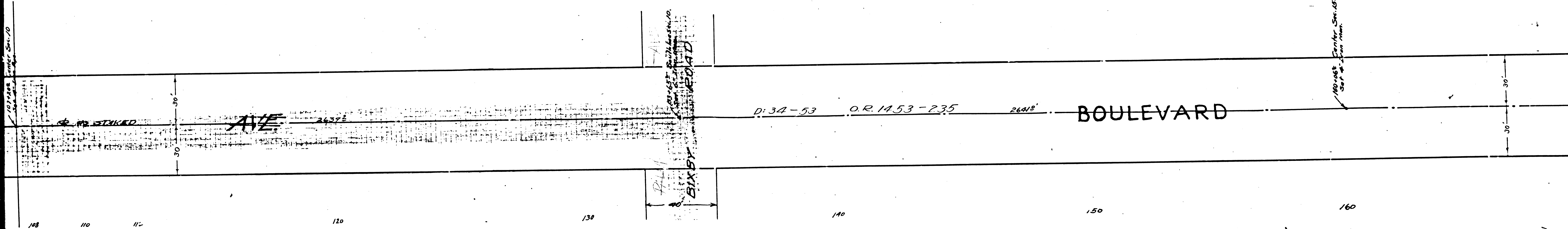
F.M.	1	8	5	0	2
A	2	OF	A	4	

A-5

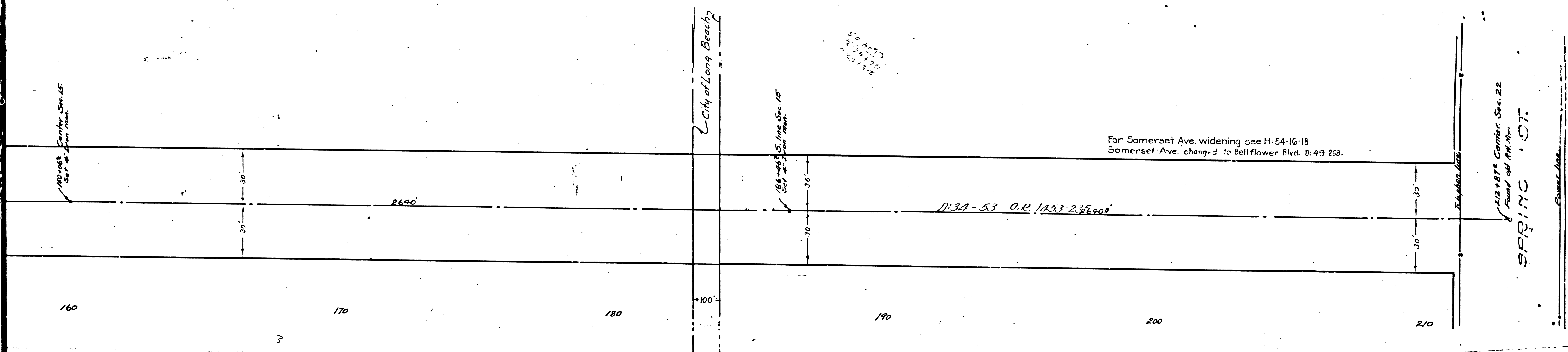
Carsan St

6'-0" SIX BY SIX ROAD

180'± Park St. 15' Set-Back min.



F.M.	1	8	5	0	2
A	3	OF	A	4	



F.M.	1	8	5	0	2
A	4	OF	A	4	