

COPIED BY COUNTY SURVEYOR

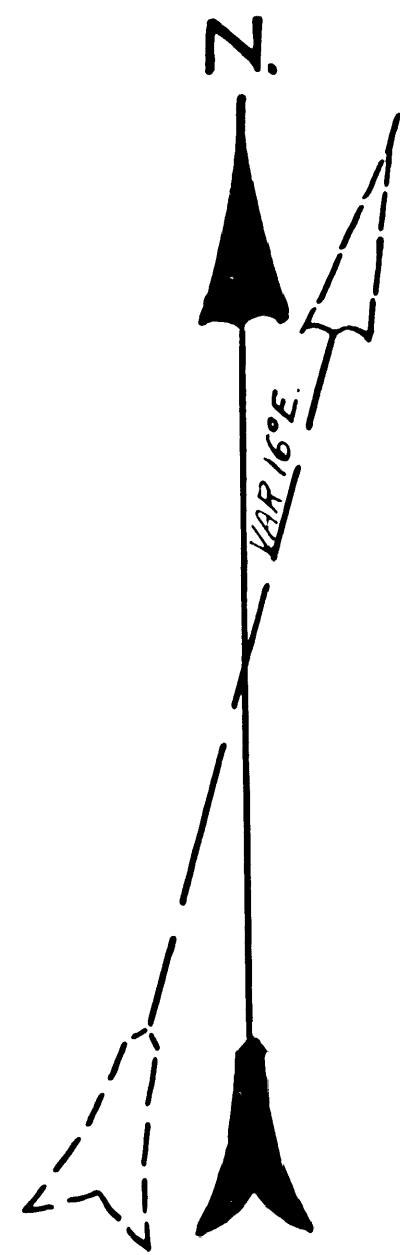
JUNE 1926.

From Blue Print of original.

SURVEY
OF THE
S.W. 1/4 OF THE N.E. 1/4
AND
W. 1/2 OF THE S.E. 1/4
SEC. 10 - T. 1 S - R. 19 W.
S.B.M.

AT THE REQUEST OF C.L. HEINDEL
 APR. 22-28, 1919. SCALE: 1" = 300' T.H. JAMES C.E.

INDEX 94



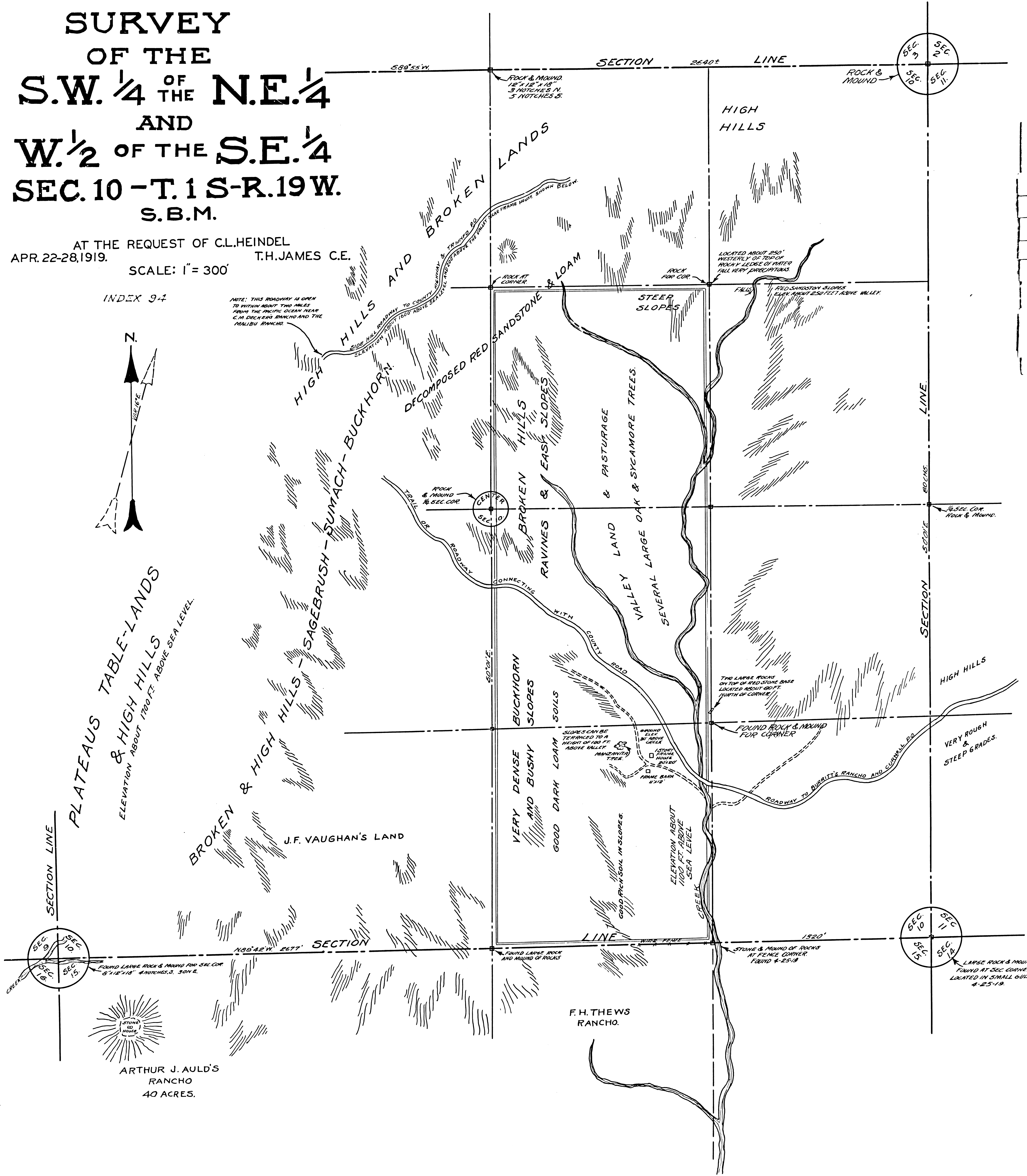
PLATEAUS TABLE-LANDS
 & HIGH HILLS
 ELEVATION ABOUT 1700 FT. ABOVE SEA LEVEL

BROKEN & HIGH HILLS - SAGEBRUSH - SUMACH - BUCKHORN

J.F. VAUGHAN'S LAND

F.H. THEWS RANCHO.

ARTHUR J. AULD'S RANCHO
 40 ACRES.



F.M. 18838