

COUNTY OF LOS ANGELES
CITY OF LONG BEACH

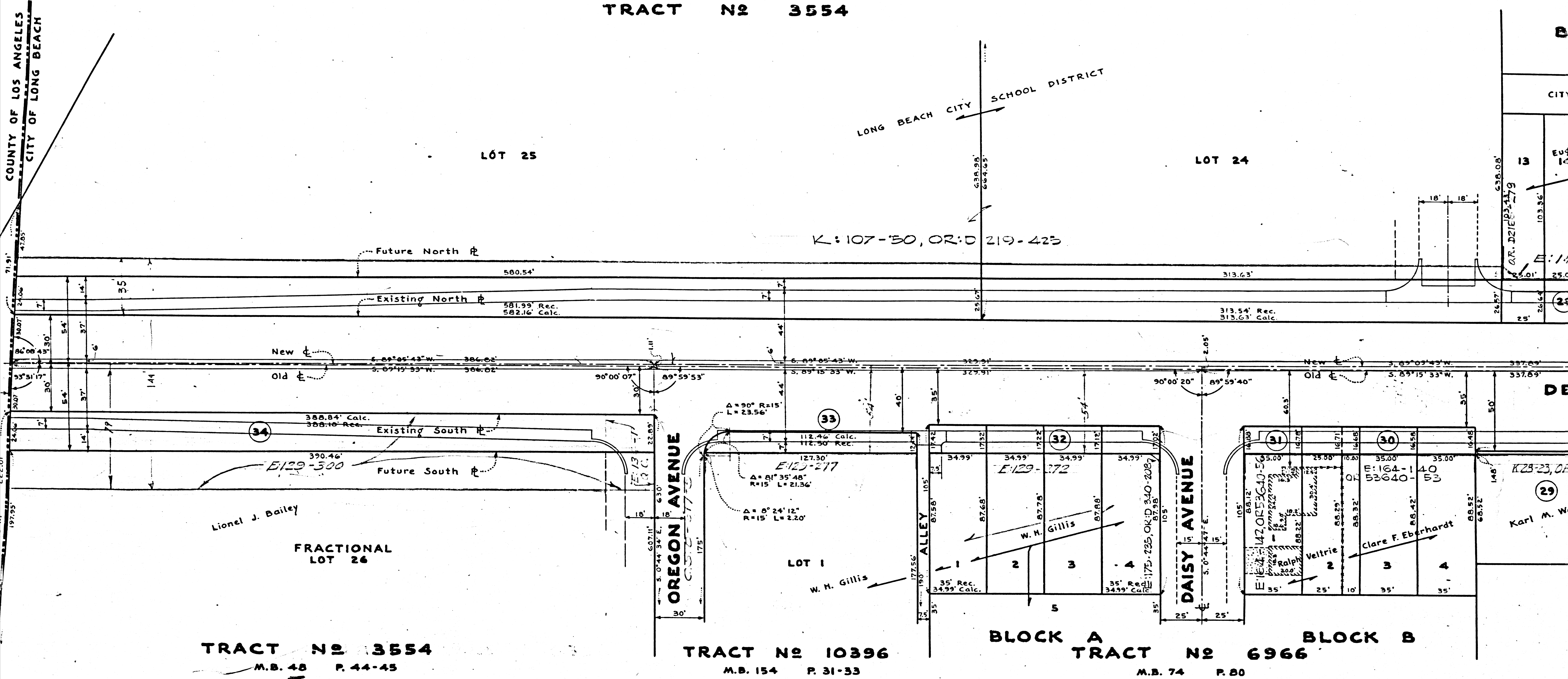
M.B. 38 P. 44-45
TRACT No 3554

LONG BEACH CITY SCHOOL DISTRICT

LÓT 25

LÓT 24

K: 107-30, OR: D 219-425



TRACT No 3554
M.B. 38 P. 44-45

TRACT No 10396
M.B. 154 P. 31-33

BLOCK A TRACT No 6966
BLOCK B
M.B. 74 P. 80

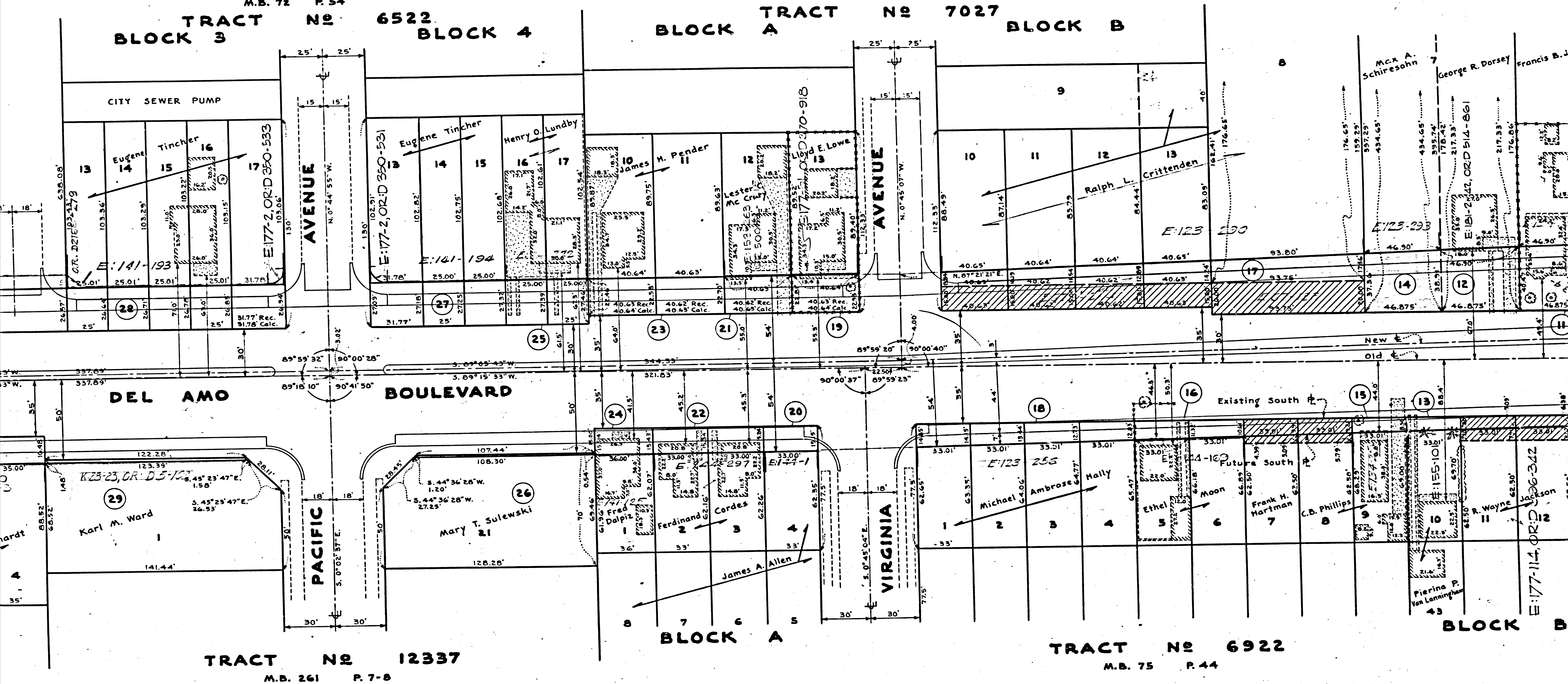
F.M.	20000-1
A1	OF A3

M.B. 72 P. 54

M.B. 74 P. 91

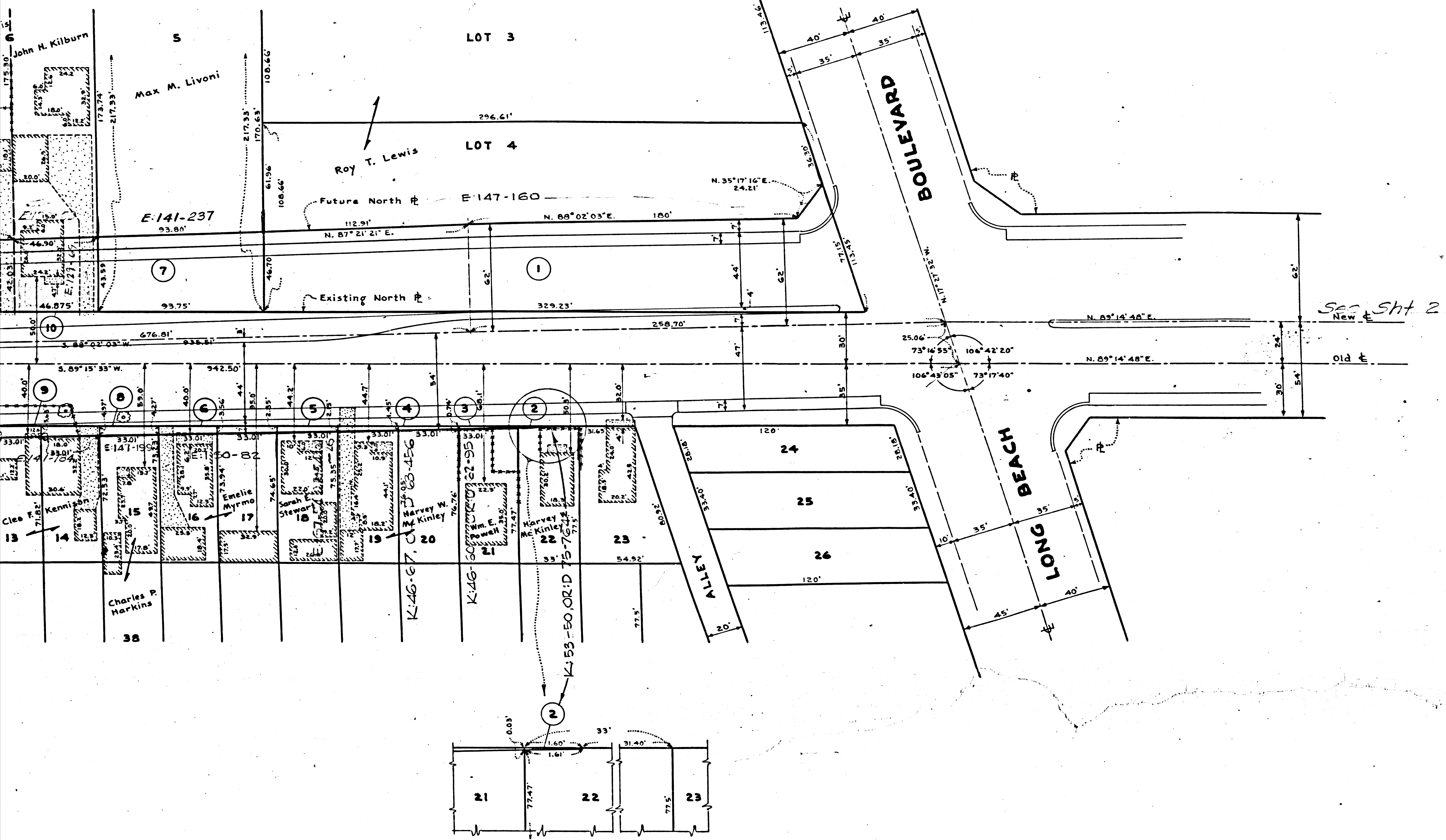
TRACT No 6522 BLOCK 3 BLOCK 4

TRACT No 7027 BLOCK A BLOCK B



F.M.	20000-1
A2	OF A3

M.B. 40 P. 41
TRACT No 3705



F.M. 20000-1
 A 3 OF A 3

CITY ENGINEER'S OFFICE, LONG BEACH	
DEL AMO BOULEVARD	
BETWEEN LOS ANGELES COUNTY FLOOD CONTROL DISTRICT	
AND LONG BEACH BOULEVARD	
PROPOSED ACQUISITION	
JESS D. GILKERSON, CITY ENGINEER	
CALCULATED BY Marchese	DRAWN BY Kirshman
SUBMITTED BY <i>D. McCones</i>	APPROVED BY <i>[Signature]</i>
RECOMMENDED BY <i>Chalmers B. [Signature]</i>	
DIVISION ENGINEER	
JOB NO 50-33A	PAGE 79-112