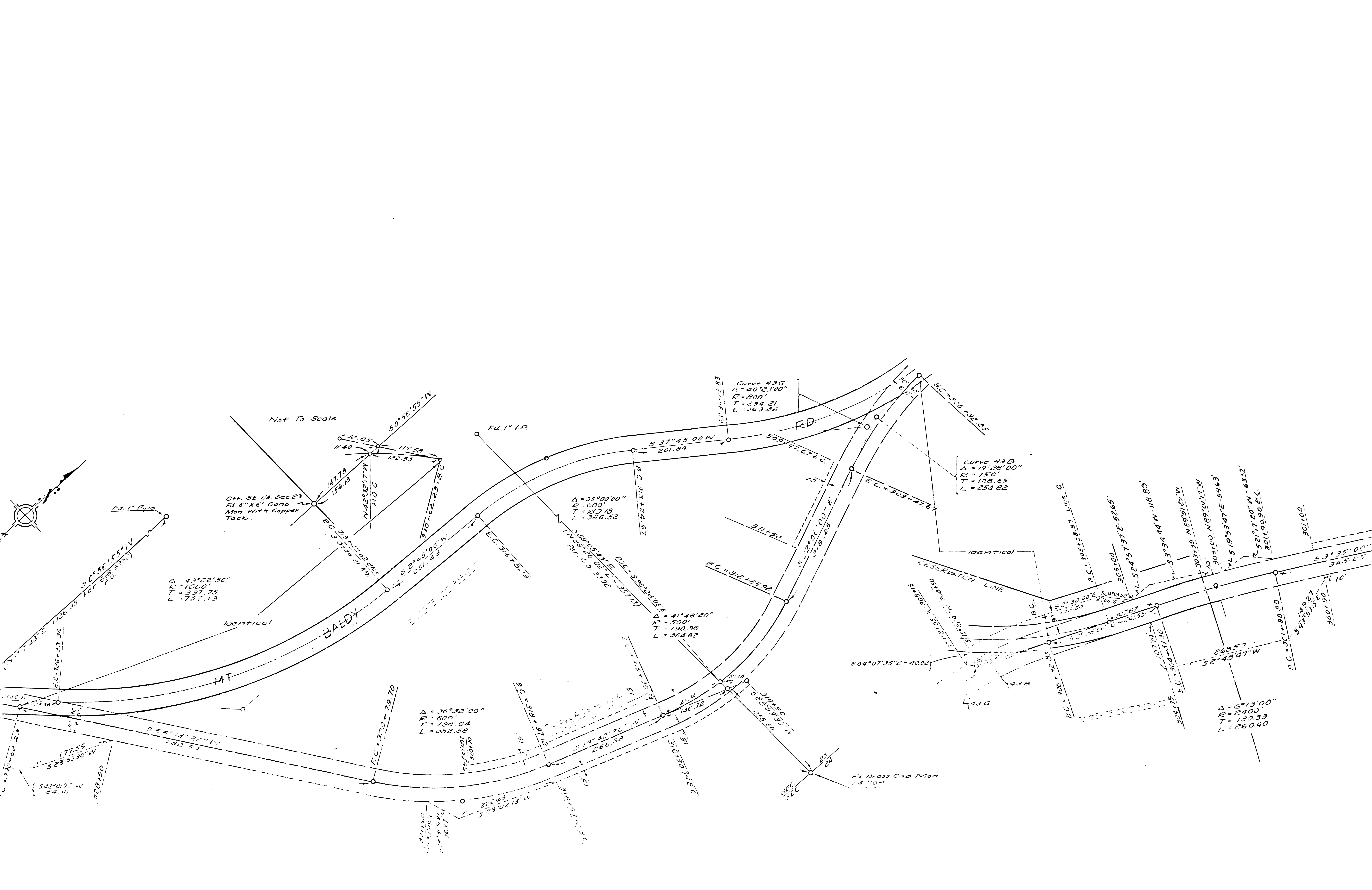


F.M. 20049  
 A1 OF A5



Not To Scale

Ch. SE 1/4, Sec. 23  
F.d. 6" X 6" Conc  
Mon. with Copper  
Tack.

$\Delta = 74^{\circ}02'50''$   
 $R = 1000'$   
 $T = 397.75$   
 $L = 737.13$

$\Delta = 35^{\circ}00'00''$   
 $R = 600'$   
 $T = 189.18$   
 $L = 366.32$

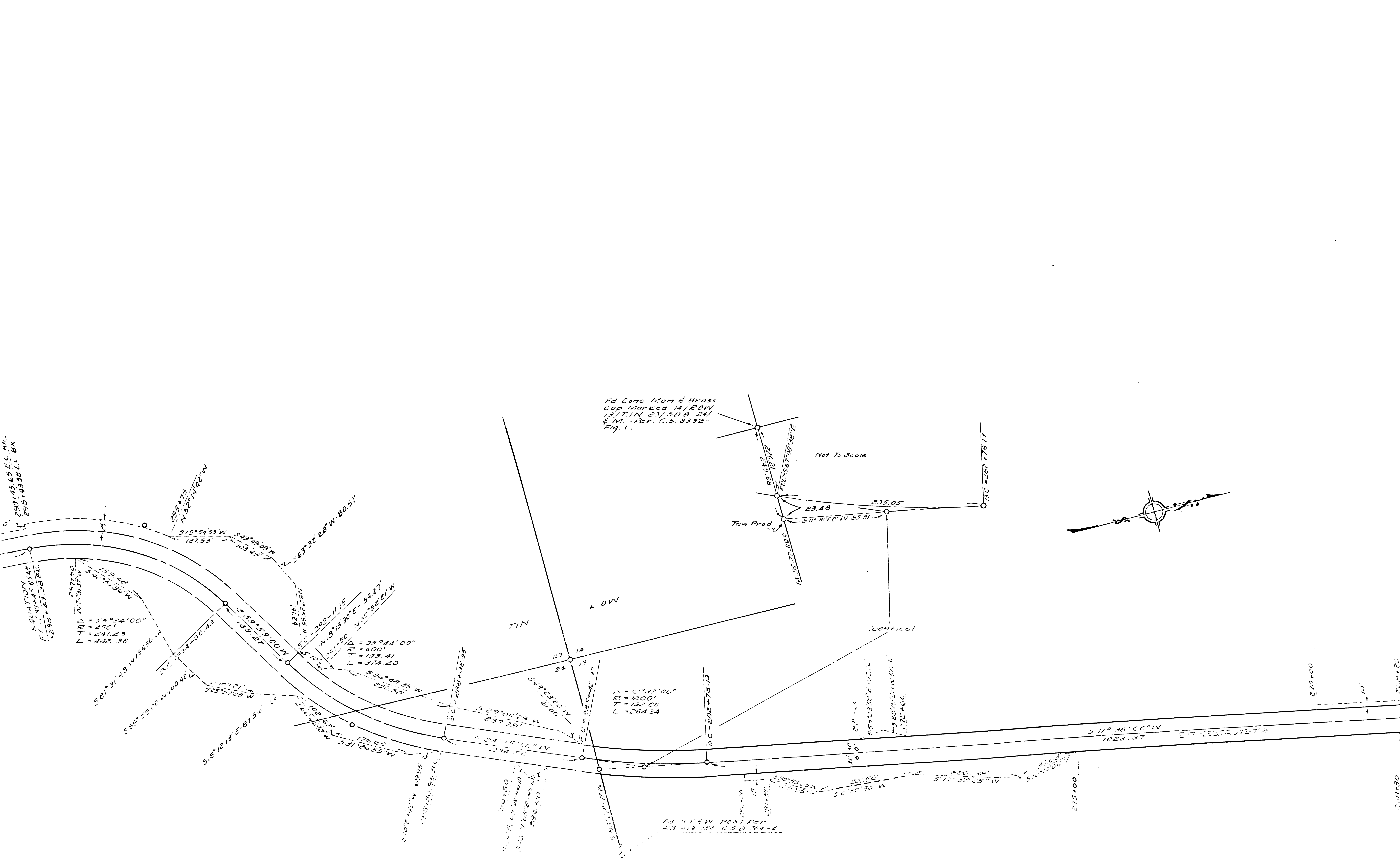
$\Delta = 41^{\circ}48'20''$   
 $R = 500'$   
 $T = 190.96$   
 $L = 364.82$

$\Delta = 36^{\circ}32'00''$   
 $R = 600'$   
 $T = 188.04$   
 $L = 362.58$

Curve 436  
 $\Delta = 40^{\circ}23'00''$   
 $R = 800'$   
 $T = 294.21$   
 $L = 563.86$

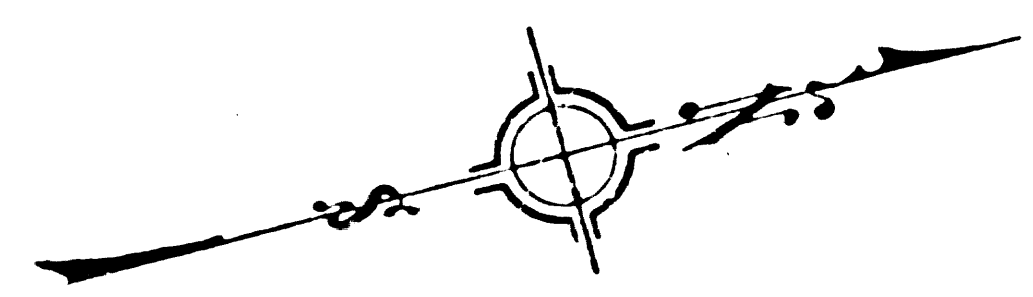
Curve 438  
 $\Delta = 19^{\circ}28'00''$   
 $R = 750'$   
 $T = 128.65$   
 $L = 254.82$

$\Delta = 60^{\circ}13'00''$   
 $R = 2400'$   
 $T = 130.33$   
 $L = 260.40$



Fid Conc Mon & Brass  
 Cap Marked 1A/2BW  
 37.71 IN 23/50 B 24/  
 4 M Per. C.S. 8332-  
 Fig. 1.

Not To Scale



$\Delta = 12^{\circ}37'00''$   
 $R = 1200'$   
 $T = 132.65$   
 $L = 264.24$

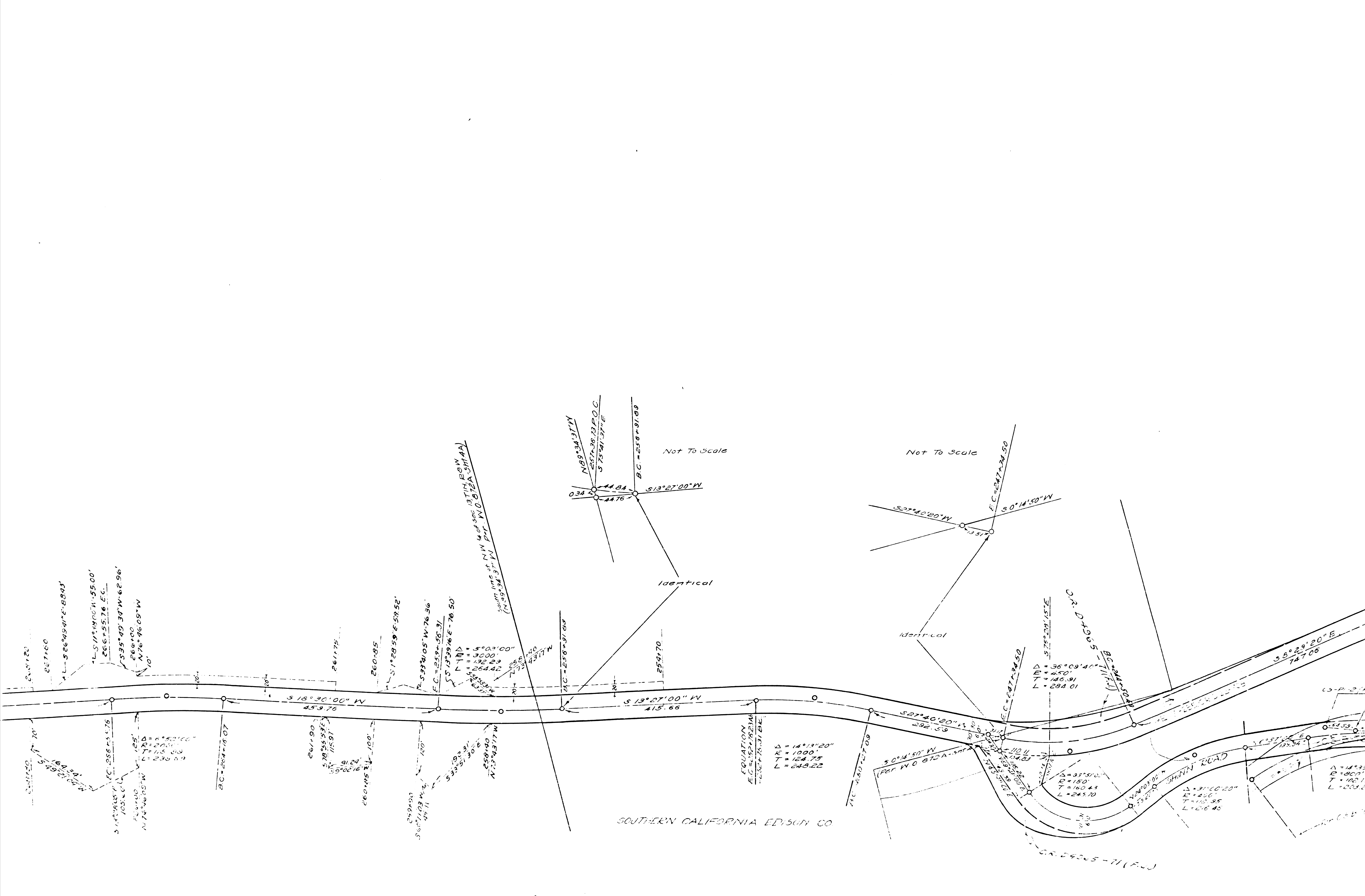
$\Delta = 35^{\circ}44'00''$   
 $R = 600'$   
 $T = 193.41$   
 $L = 374.20$

EQUATION  
 $F.C. = 43.38$   
 $L = 442.96$

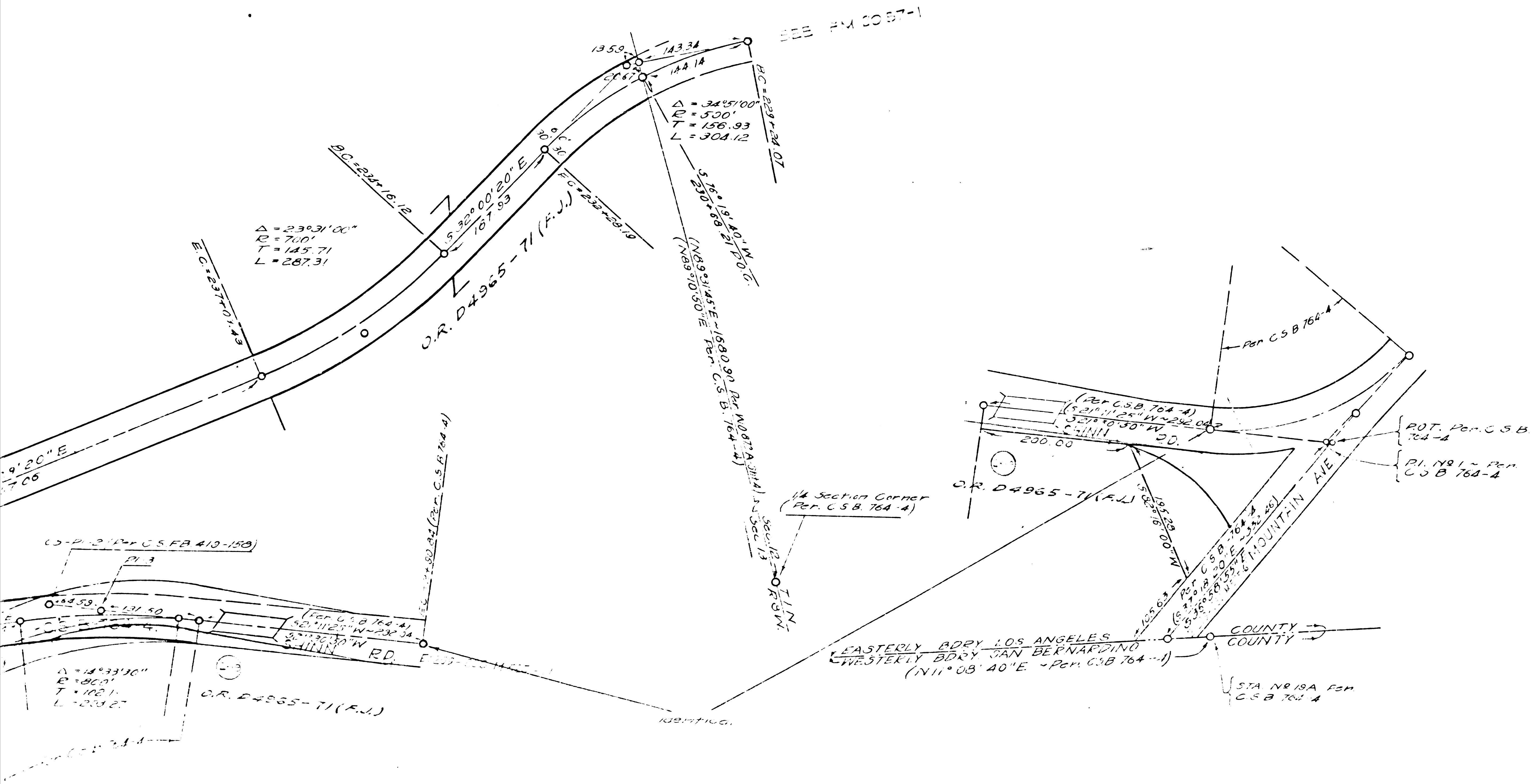
FA 11 E W POST FOR  
 FB 213-154 C.S. 104-4

F.M. 20049

A3 OF A5



SOUTHERN CALIFORNIA EDISON CO



**W.O. 872A**  
 DEED MAP SHOWING REALIGNMENT OF A PORTION OF  
**M.T. CAMP BALDY ROAD**  
 IN SECTION 13, 23 & 24, T11N, R29W  
 SHEET NO 5A

Los Angeles County Road Dept  
 Field Work - McNish  
 Office Work - Smith  
 Checked - Kerjón

Mar 1952  
 Scale: 1" = 100'  
 Wall Sheet 15  
 Road Dist 112

Note:  
 Bearings are based on the Los Angeles County Survey  
 Control System as shown on C.S. Map No. B-1764-4

I. M. 50

F.M. 20049  
 A5 OF A5