

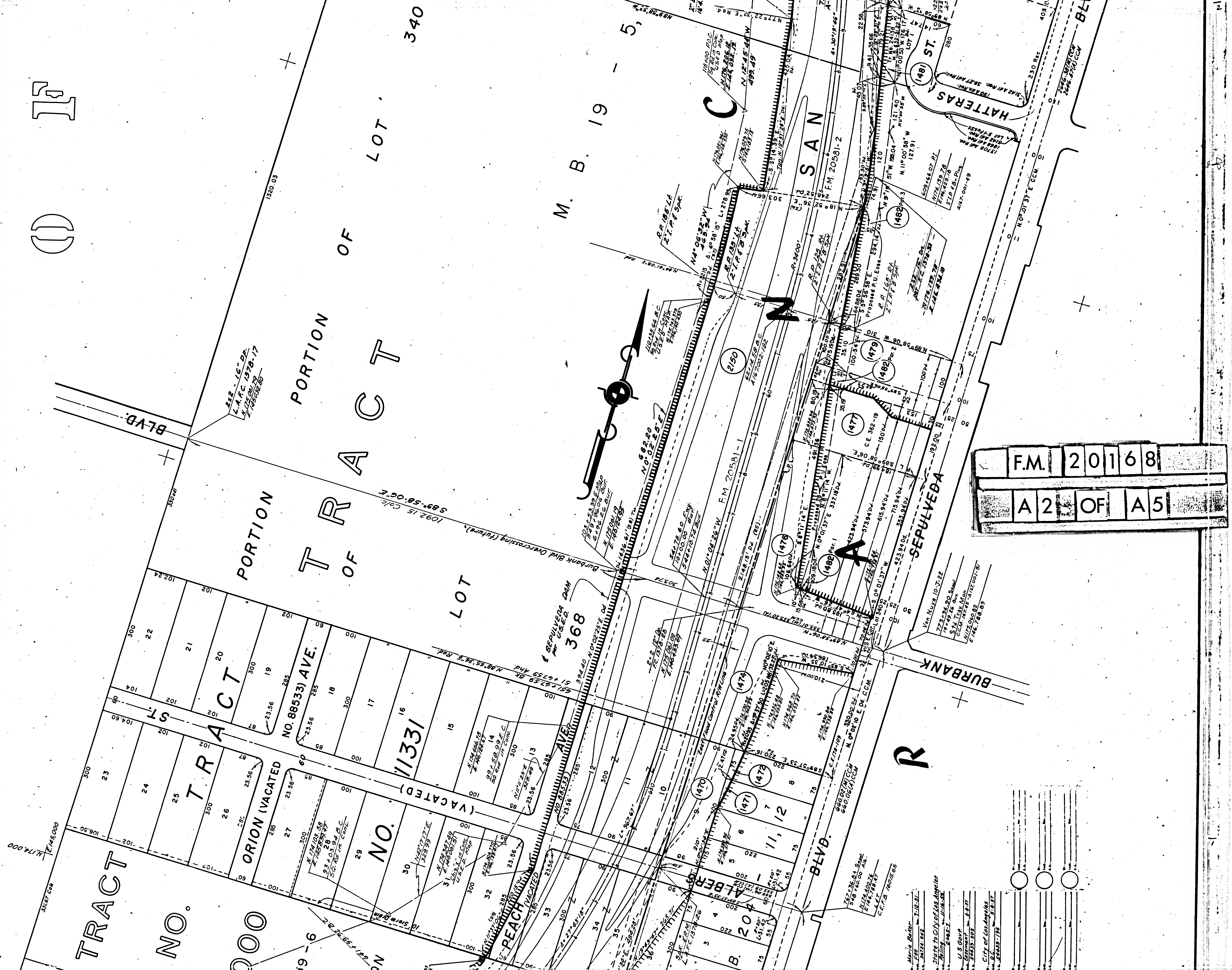
1460	U.S.A.	Arthur B. Knight et al.	1470	U.S.A.	James Leo et al.
1461	U.S.A.	Arthur B. Knight et al.	1471	U.S.A.	Ernest R. Nichols et al.
1462	U.S.A.	Bank Am. N.T. & S.A.	1472	U.S.A.	International Harvester
1463	U.S.A.	Arthur L. Nichols et al.	1473	U.S.A.	James Leo et al.
1464	U.S.A.	Charles K. Johnson	1474	U.S.A.	Ernest R. Nichols et al.
1465	U.S.A.	James Leo et al.	1475	U.S.A.	International Harvester
1466	U.S.A.	James Leo et al.	1476	U.S.A.	Ernest R. Nichols et al.
1467	U.S.A.	James Leo et al.	1477	U.S.A.	International Harvester
1468	U.S.A.	James Leo et al.	1478	U.S.A.	Ernest R. Nichols et al.
1469	U.S.A.	James Leo et al.	1479	U.S.A.	International Harvester
1470	U.S.A.	James Leo et al.	1480	U.S.A.	Ernest R. Nichols et al.
1471	U.S.A.	James Leo et al.	1481	U.S.A.	International Harvester
1472	U.S.A.	James Leo et al.	1482	U.S.A.	Ernest R. Nichols et al.
1473	U.S.A.	James Leo et al.	1483	U.S.A.	International Harvester
1474	U.S.A.	James Leo et al.	1484	U.S.A.	Ernest R. Nichols et al.
1475	U.S.A.	James Leo et al.	1485	U.S.A.	International Harvester
1476	U.S.A.	James Leo et al.	1486	U.S.A.	Ernest R. Nichols et al.
1477	U.S.A.	James Leo et al.	1487	U.S.A.	International Harvester
1478	U.S.A.	James Leo et al.	1488	U.S.A.	Ernest R. Nichols et al.
1479	U.S.A.	James Leo et al.	1489	U.S.A.	International Harvester
1480	U.S.A.	James Leo et al.	1490	U.S.A.	Ernest R. Nichols et al.

F.M. 20168
A1 OF A5

FOR CONTINUATION SEE MAP NO. F-2207

M 173,000

COIT



19-6

NO. 11331

TRACT OF

PORTION OF

TRACT

NO. 11331

TRACT

NO. 11331

TRACT

NO. 11331

TRACT

NO. 11331

TRACT

NO. 11331

TRACT

NO. 11331

TRACT

NO. 11331

TRACT

NO. 11331

19-5

M. B. 19-5

TRACT

NO. 11331

TRACT

NO. 11331

TRACT

NO. 11331

TRACT

NO. 11331

TRACT

NO. 11331

TRACT

NO. 11331

TRACT

NO. 11331

TRACT

NO. 11331

TRACT

NO. 11331

F.M. 20168
A2 OF A5

Maria Biter
L.S. GOV.
City of Los Angeles
City of Los Angeles

11

11

F.M.	20168
A3	OF A5

PORTION OF

OF

LOT

D 4232 - 118 et seq

LOT 340

PORTION OF

N O O

LOT 283

19 - 5, 6

H

AN

DIEGO

ST.

HATTERAS

BLVD.

E L

PORTION

OF FREEWAY

50. PAC. R. R. RM

50. PAC. R. R. RM

50. PAC. R. R. RM

50. PAC. R. R. RM

50. PAC. R. R. RM

50. PAC. R. R. RM

50. PAC. R. R. RM

50. PAC. R. R. RM

50. PAC. R. R. RM

12948-29

1301-22

267672

12948-29

1301-22

267672

12948-29

1301-22

267672

12948-29

1301-22

267672

12948-29

1301-22

267672

12948-29

1301-22

267672

12948-29

1301-22

267672

12948-29

1301-22

267672

12948-29

1301-22

267672

12948-29

1301-22

267672

F.M.	20168
A3	OF A5

PORTION OF

OF

LOT

D 4232 - 118 et seq

LOT 340

PORTION OF

N O O

LOT 283

19 - 5, 6

H

AN

DIEGO

ST.

HATTERAS

BLVD.

E L

PORTION

OF FREEWAY

50. PAC. R. R. RM

50. PAC. R. R. RM

50. PAC. R. R. RM

50. PAC. R. R. RM

50. PAC. R. R. RM

50. PAC. R. R. RM

50. PAC. R. R. RM

50. PAC. R. R. RM

50. PAC. R. R. RM

12948-29

1301-22

267672

12948-29

1301-22

267672

12948-29

1301-22

267672

12948-29

1301-22

267672

12948-29

1301-22

267672

12948-29

1301-22

267672

12948-29

1301-22

267672

12948-29

1301-22

267672

12948-29

1301-22

267672

12948-29

1301-22

267672

F.M.	20168
A3	OF A5

PORTION OF

OF

LOT

D 4232 - 118 et seq

LOT 340

PORTION OF

N O O

LOT 283

19 - 5, 6

H

AN

DIEGO

ST.

HATTERAS

BLVD.

E L

PORTION

OF FREEWAY

50. PAC. R. R. RM

50. PAC. R. R. RM

50. PAC. R. R. RM

50. PAC. R. R. RM

50. PAC. R. R. RM

50. PAC. R. R. RM

50. PAC. R. R. RM

50. PAC. R. R. RM

50. PAC. R. R. RM

12948-29

1301-22

267672

12948-29

1301-22

267672

12948-29

1301-22

267672

12948-29

1301-22

267672

12948-29

1301-22

267672

12948-29

1301-22

267672

12948-29

1301-22

267672

12948-29

1301-22

267672

12948-29

1301-22

267672

12948-29

1301-22

267672

IL O S A N G

RIGHT-OF-WAY

LOT

STREET (ABANDONED)

OXNARD RAILROAD

NO

REEWAY

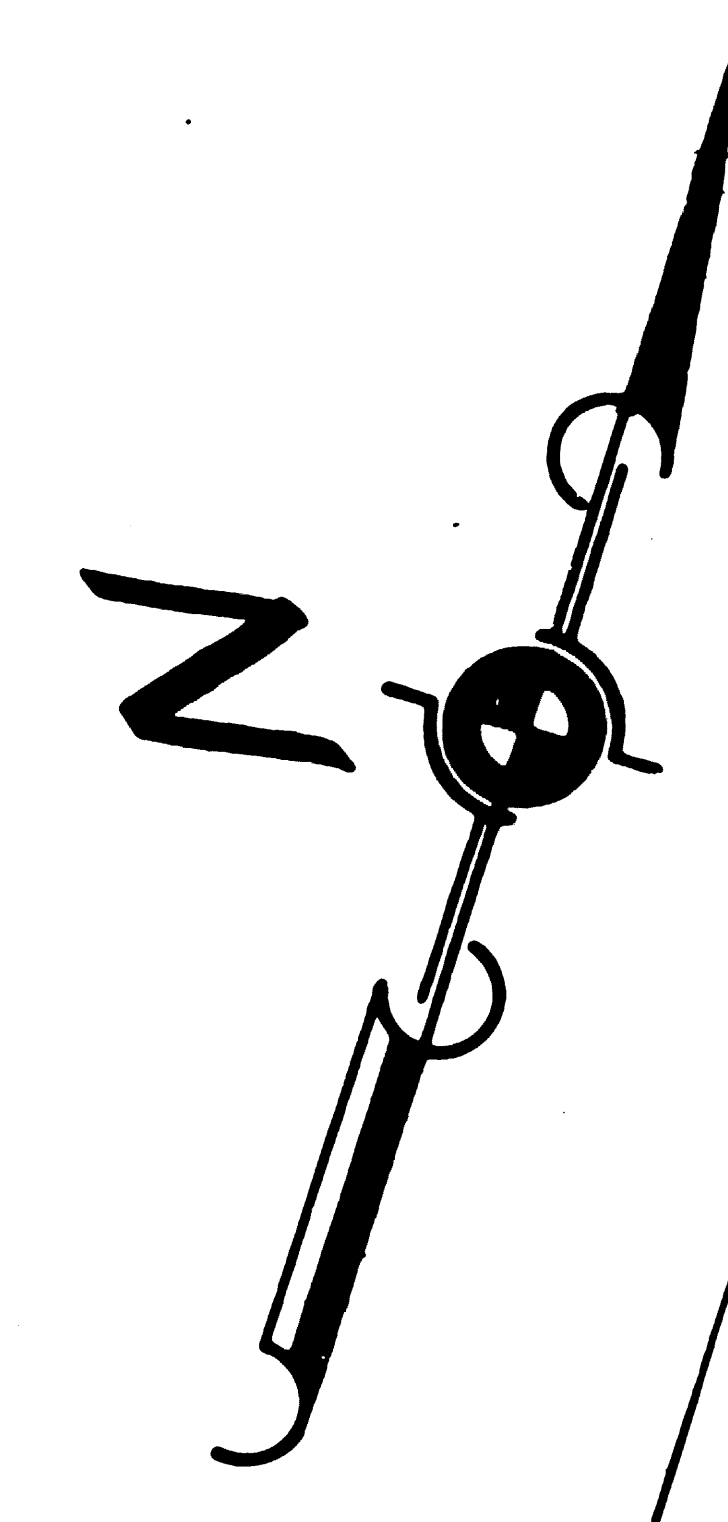
PORTION OF LOT

SO. PAC. R.R. RW

OF

274

F.M. 20168
A 4 OF A 5



ORD 21605-281

AVE. (VACATED)

N B

C

E

AVE.

ORD 88533

21 R.C. SPK
A-167002-184

21 R.C. SPK
A-167002-184

21 R.C. SPK
A-167002-184

21 R.C. SPK
A-167002-184

21 R.C. SPK
A-167002-184

21 R.C. SPK
A-167002-184

21 R.C. SPK
A-167002-184

21 R.C. SPK
A-167002-184

21 R.C. SPK
A-167002-184

21 R.C. SPK
A-167002-184

21 R.C. SPK
A-167002-184

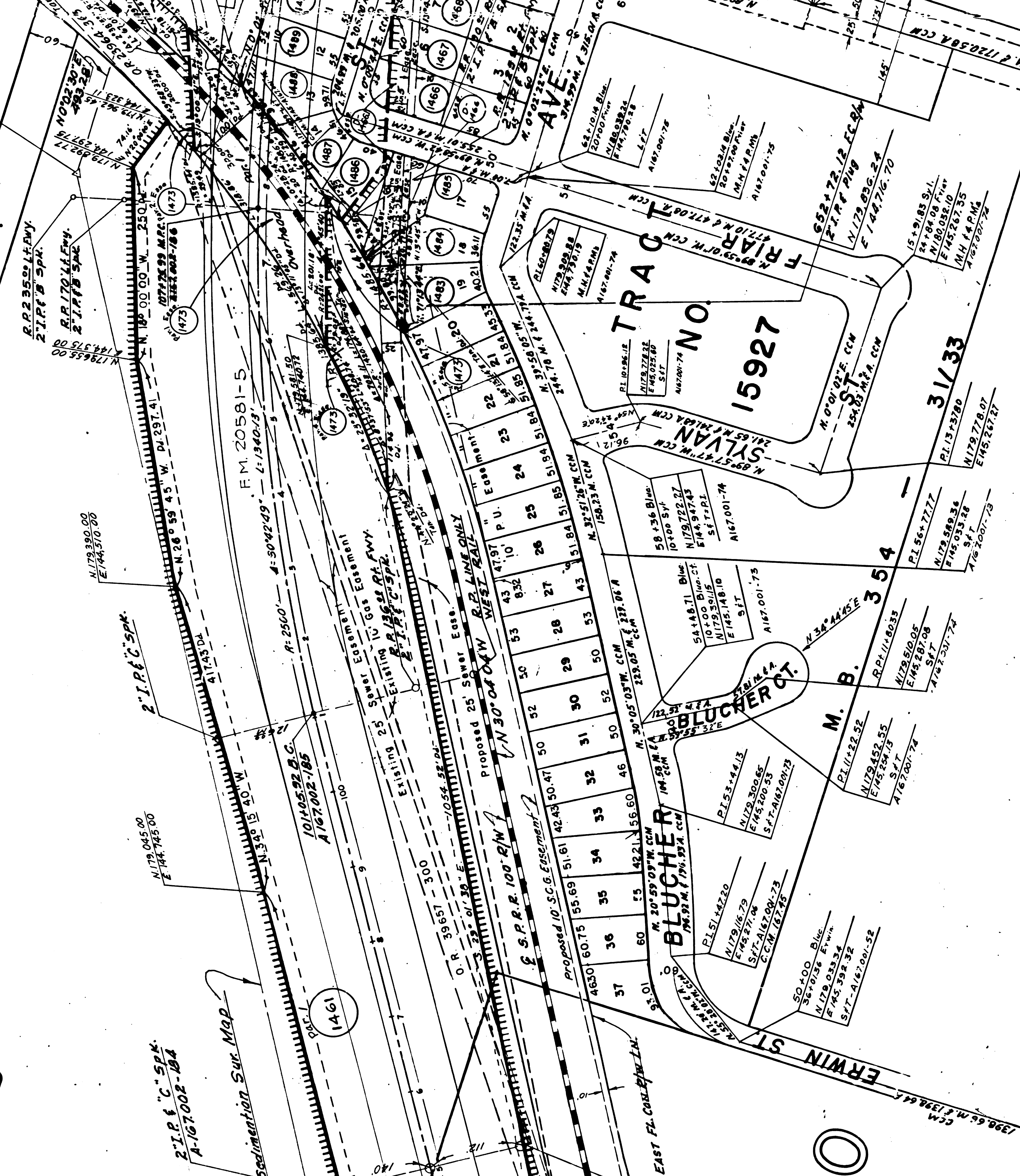
21 R.C. SPK
A-167002-184

21 R.C. SPK
A-167002-184

21 R.C. SPK
A-167002-184

21 R.C. SPK
A-167002-184

21 R.C. SPK
A-167002-184



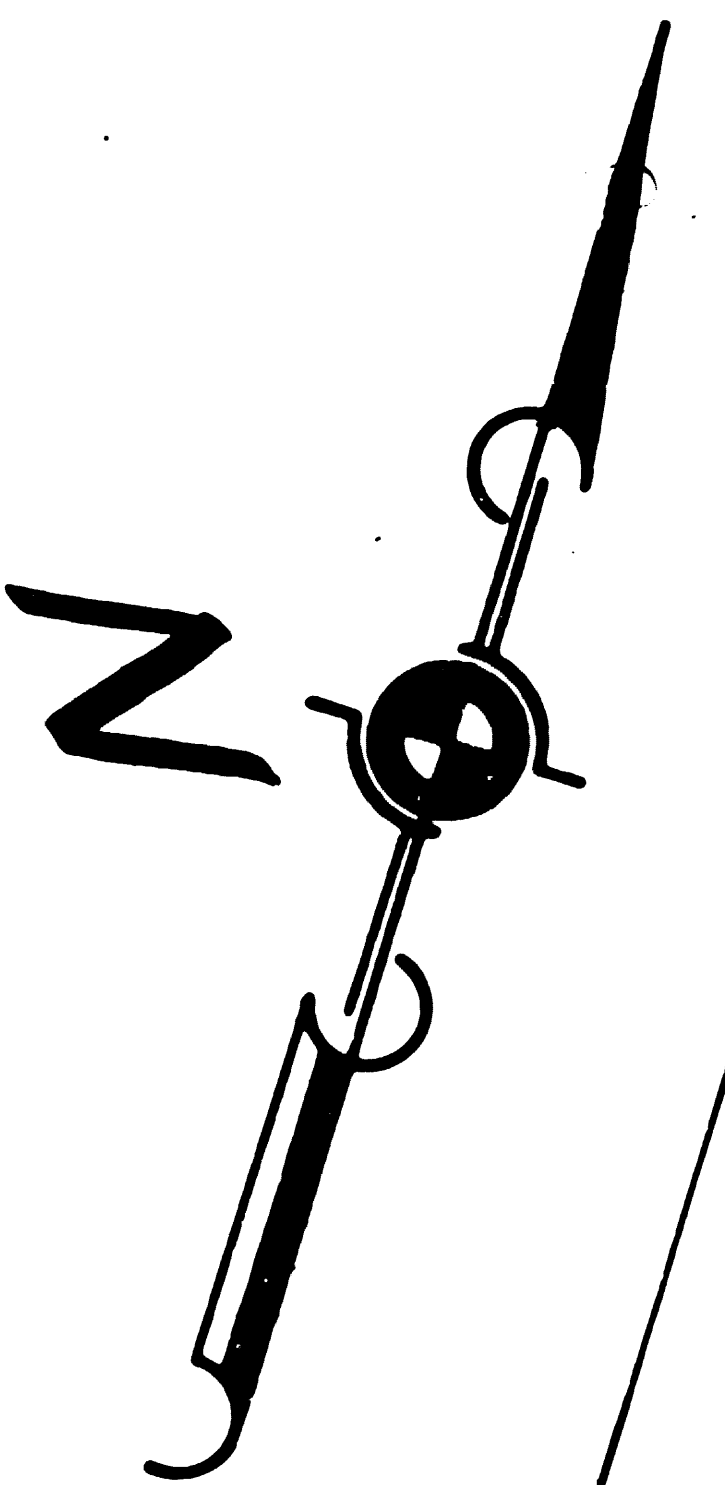
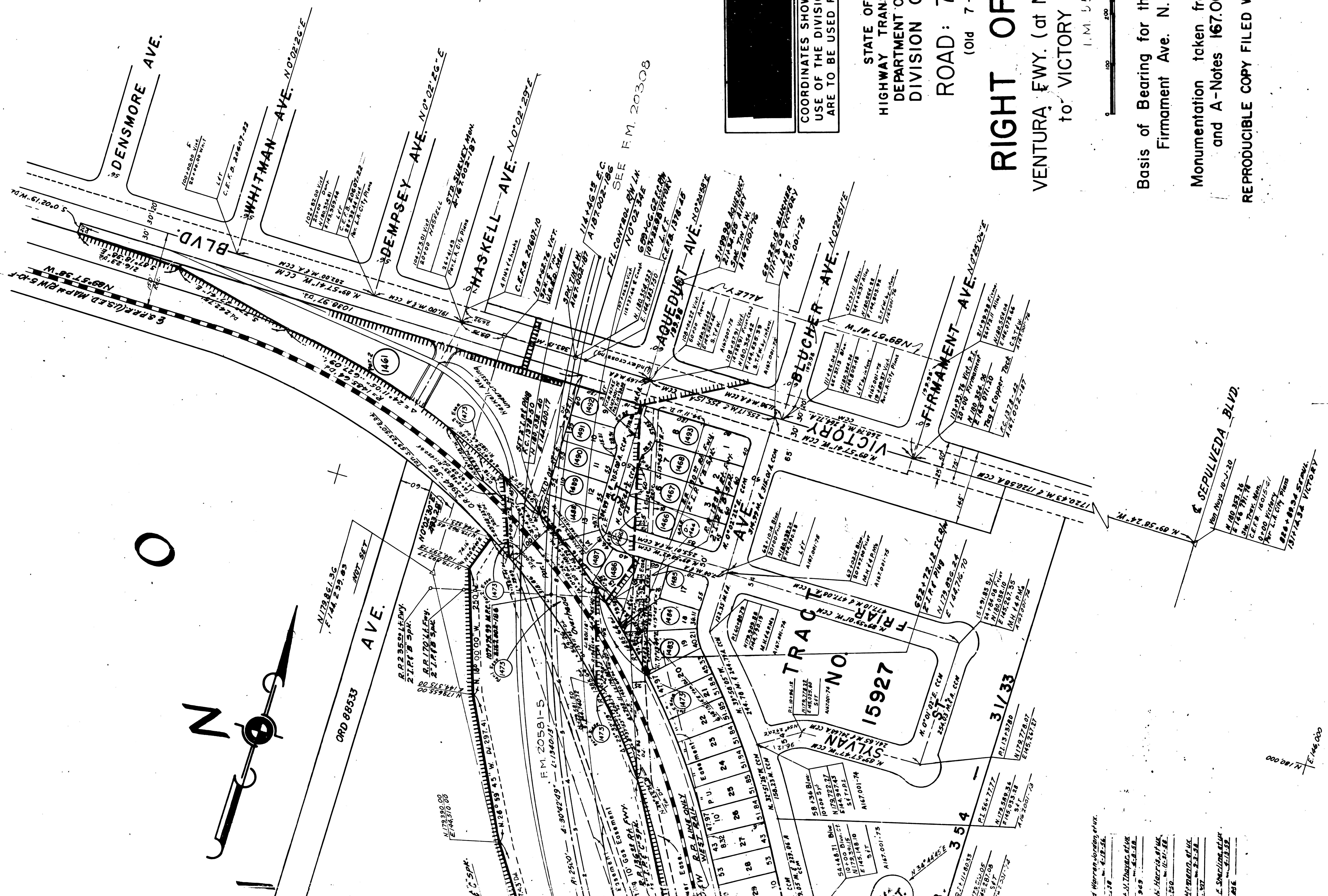
- 1466 State to City of Los Angeles
- 1467 Fred M. Davis et al
- 1468 E. J. Lamb et al
- 1469 Mildred Daniels
- 1470 So. Pacific R.R. Co.
- 1471 City of Los Angeles
- 1472 So. Pacific R.R. Co.
- 1473 City of Los Angeles
- 1474 City of Los Angeles
- 1475 City of Los Angeles
- 1476 City of Los Angeles
- 1477 City of Los Angeles
- 1478 City of Los Angeles
- 1479 City of Los Angeles
- 1480 City of Los Angeles
- 1481 City of Los Angeles
- 1482 City of Los Angeles
- 1483 City of Los Angeles
- 1484 City of Los Angeles
- 1485 City of Los Angeles
- 1486 City of Los Angeles
- 1487 City of Los Angeles
- 1488 City of Los Angeles
- 1489 City of Los Angeles
- 1490 City of Los Angeles
- 1491 City of Los Angeles
- 1492 City of Los Angeles
- 1493 City of Los Angeles
- 1494 City of Los Angeles
- 1495 City of Los Angeles
- 1496 City of Los Angeles
- 1497 City of Los Angeles
- 1498 City of Los Angeles
- 1499 City of Los Angeles
- 1500 City of Los Angeles

10000

14

N C I E S

Scale: 1" = 100.000'



A 5 OF A 5

F.M. 20168

[REDACTED]

COORDINATES SHOWN ARE FOR INTERNAL USE OF THE DIVISION OF HIGHWAYS AND ARE TO BE USED FOR REFERENCE ONLY

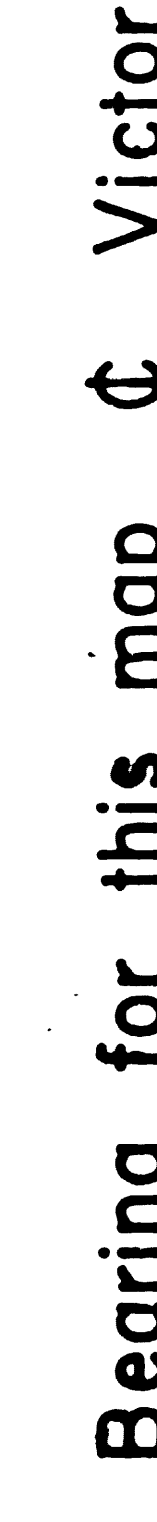
STATE OF CALIFORNIA
HIGHWAY TRANSPORTATION AGENCY
DEPARTMENT OF PUBLIC WORKS
DIVISION OF HIGHWAYS

ROAD: 7 - LA - 405
(Old 7 - (LA - 158 - LA - 13,12)

RIGHT OF WAY MAP

VENTURA FWY. (at Magnolia Blvd.) (PM 39.85)
to VICTORY BLVD. (PM 41.38)

I.M. 55



Basis of Bearing for this map \angle Victory Blvd. from Firmament Ave. N.89° 57' 41" W.

Monumentation taken from C.C.M. 167.45 Rev. 4/59 and A-Notes 167.001

REPRODUCIBLE COPY FILED WITH LA CO. SURVEYOR 12/64

F-1938

FOR CONTINUATION SEE MAP NO. F-1939