

N. 4, 116, 633.599  
 E. 4, 341, 500.200  
 ∩ INTERSECTION GRAND AVENUE  
 & BREA CANYON ROAD  
 ∩ P.I. (FUT.)

N. 4, 116, 365.54  
 E. 4, 341, 275.16  
 ∩ INTERSECTION GRAND AVENUE  
 & BREA CANYON ROAD  
 ∩ P.I. (TEMP)

∩ CURVE DATA  
 Δ = 87° 08' 15"  
 R = 140'  
 T = 133.17'  
 L = 212.90'

∩ FUTURE CURVE DATA  
 Δ = 11° 14' 44"  
 R = 3000'  
 T = 295.36'  
 L = 589.68'

∩ CURVE DATA  
 Δ = 87° 08' 15"  
 R = 140'  
 T = 133.17'  
 L = 212.90'

∩ CURVE DATA  
 Δ = 9° 47' 51"  
 R = 3000'  
 T = 297.12'  
 L = 513.00'

∩ CURVE DATA  
 Δ = 92° 55' 48"  
 R = 27'  
 T = 28.42'  
 L = 43.79'

∩ CURVE DATA  
 Δ = 27° 01' 27"  
 R = 600'  
 T = 144.18'  
 L = 283.00'

F.M.	20209
A 1	OF A 4



§ TOTAL CURVE DATA (PROPOSED & FUTURE)  
 $\Delta^3 = 53^\circ 12' 20''$   
 $R = 3000'$   
 $T = 1502.47'$   
 $L = 2785.83'$

§ CURVE DATA  
 $\Delta^3 = 32^\circ 08' 45''$   
 $R = 3000'$   
 $T = 684.37'$   
 $L = 1683.15'$

§ CURVE DATA  
 $\Delta = 90^\circ 18' 09''$   
 $R = 271.18' 09''$   
 $T = 27.14$   
 $L = 42.55$

INTERSECTION P.O.C.  
 GOLDEN SPRINGS DRIVE AND  
 AVENUE DRIVE  
 115.199.312  
 342.001.856

CURVE DATA  
 $\Delta = 92^\circ 55' 48''$   
 $R = 271.18' 09''$   
 $T = 27.14$   
 $L = 42.55$

GOLDEN SPRINGS DRIVE  
 FM 20130  
 SHEET 1

O.R.D. 3444 - 443  
**GRAND**

PROPOSED CENTER LINE  
 1683.15'

PROPOSED  
 $L = 2785.83'$

PROPOSED RIGHT OF WAY  
 $S. 22^\circ 57' 44'' E.$

$N. 4.114.593.509$   
 $E. 4.342.211.013$

§ P.I. (FUT.)  
 $N. 4.114.743.044$   
 $E. 4.341.891.714$

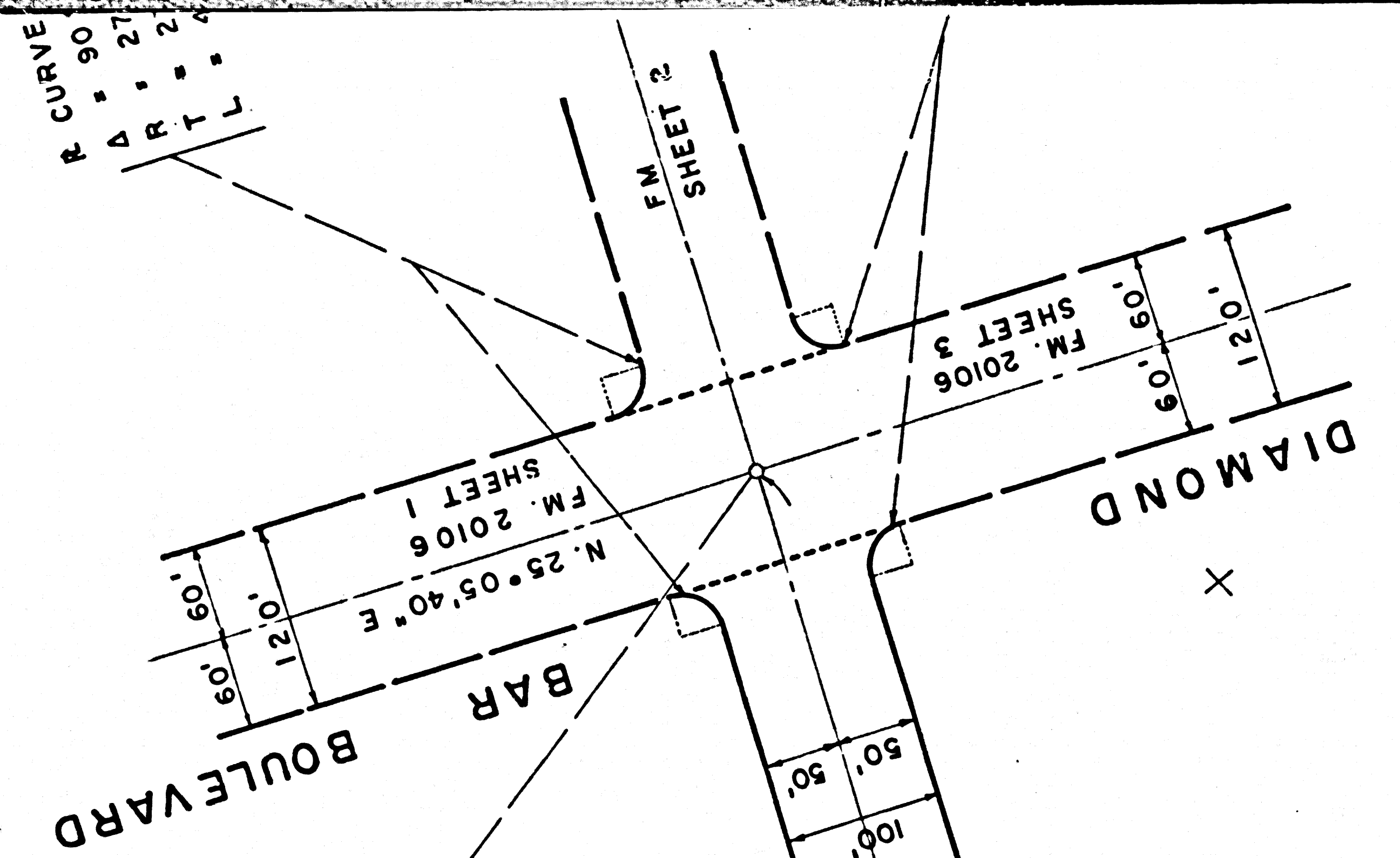
S. 57.14.25" W.  
 RAD.

O.R.D. 2218-354  
 513.00'

O.R.D. 2218-354  
 513.00'

F.M.	20209
A 2	OF A 4





INTERSECTION AND  
 GRAND AVENUE BOULEVARD  
 DIAMOND BAR A38  
 N. 4.113.170.438  
 E. 4.345.249.816

PROPOSED O.P.D. 3444 - 443 LINE  
 PROPOSED CENTER LINE  
 PROPOSED RIGHT OF WAY LINE

AVENUE

S. 64° 54' 20\"/>

E. C. 114.105.829  
 N. 4.114.105.829  
 E. 4.345.252.365

F.M.	2	0	2	0	9
A	3	OF	A	4	

X

X

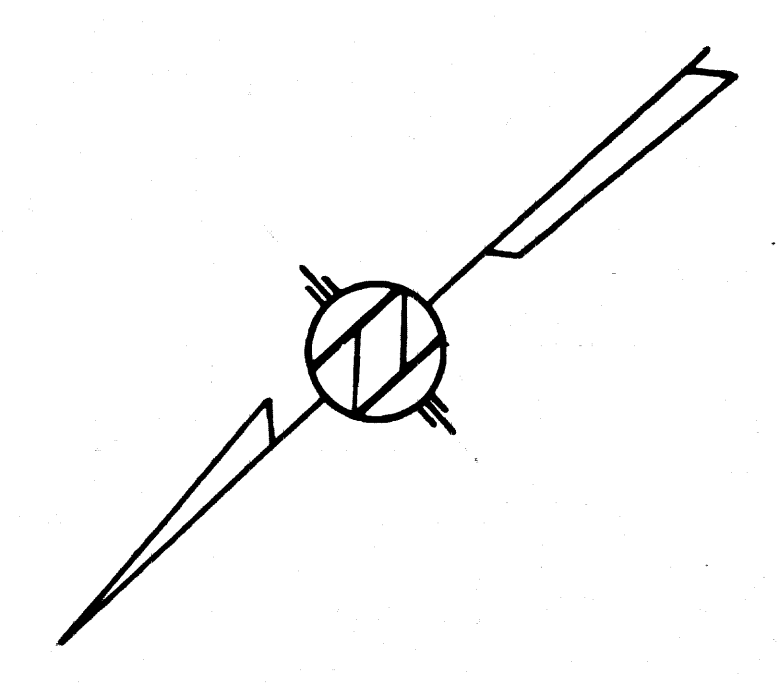
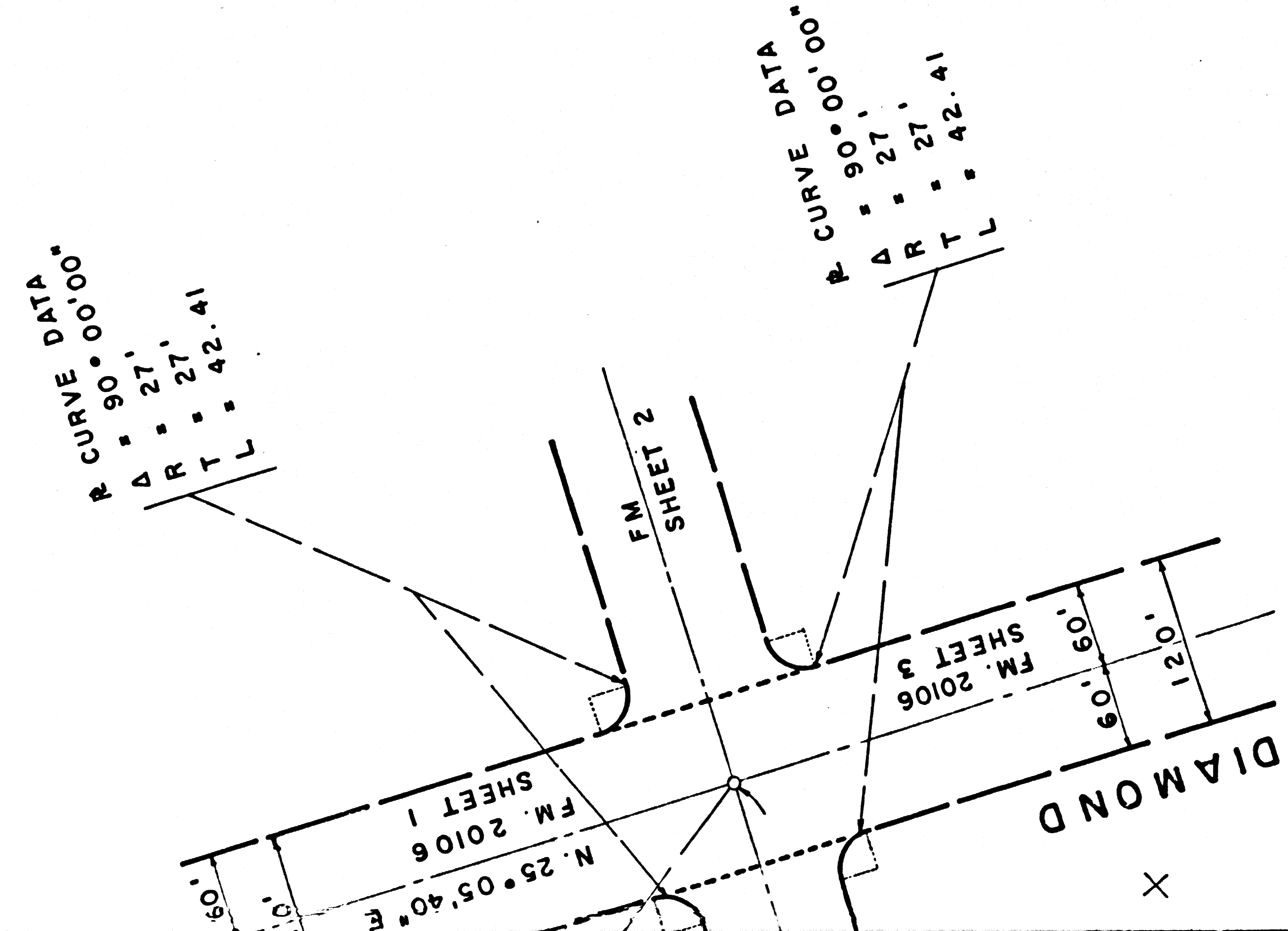
X

X

X

12





SCALE: 1" = 100'

MAP OF  
**PROPOSED GRAND AVENUE**  
 FROM  
 BREA CANYON ROAD  
 TO  
 DIAMOND BAR BOULEVARD  
 FM 20209

SHEET 1 OF 2  
 SHEET 2 NOT FILED

**BASIS OF BEARING**

THE BEARINGS SHOWN HEREON ARE BASED ON THE CALIFORNIA COORDINATE SYSTEM, ZONE 7, PER CHAPTER 1307, STATUS OF 1947, BEING N 24° 43' 41.41" W BETWEEN COVINA K-12 AND COVINA I-9 AS SHOWN ON COVINA K-12, CARD 2, ON FILE IN THE OFFICE OF THE LOS ANGELES COUNTY ENGINEER; AND THE RECORD OF SURVEY, RECORDED ON BOOK 76, PAGE 51 THRU 56 OF THE RECORDS OF THE COUNTY OF LOS ANGELES.

**NOTE**

THE POINTS SHOWN ON THIS MAP HAVE NOT BEEN ESTABLISHED BY SURVEY.

F.M.	2	0	2	0	9
A	4	OF	A	4	

PREPARED BY:  
 QUINTON ENGINEERS LTD.  
 APPROVED BY: *Charles J. Haver*  
 CHARLES J. HAVER R.C.E. 9503