

FOR CONTINUATION SEE MAP NO F-1291 LA-4-LA

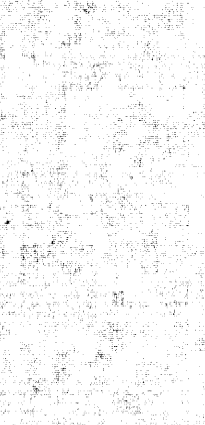
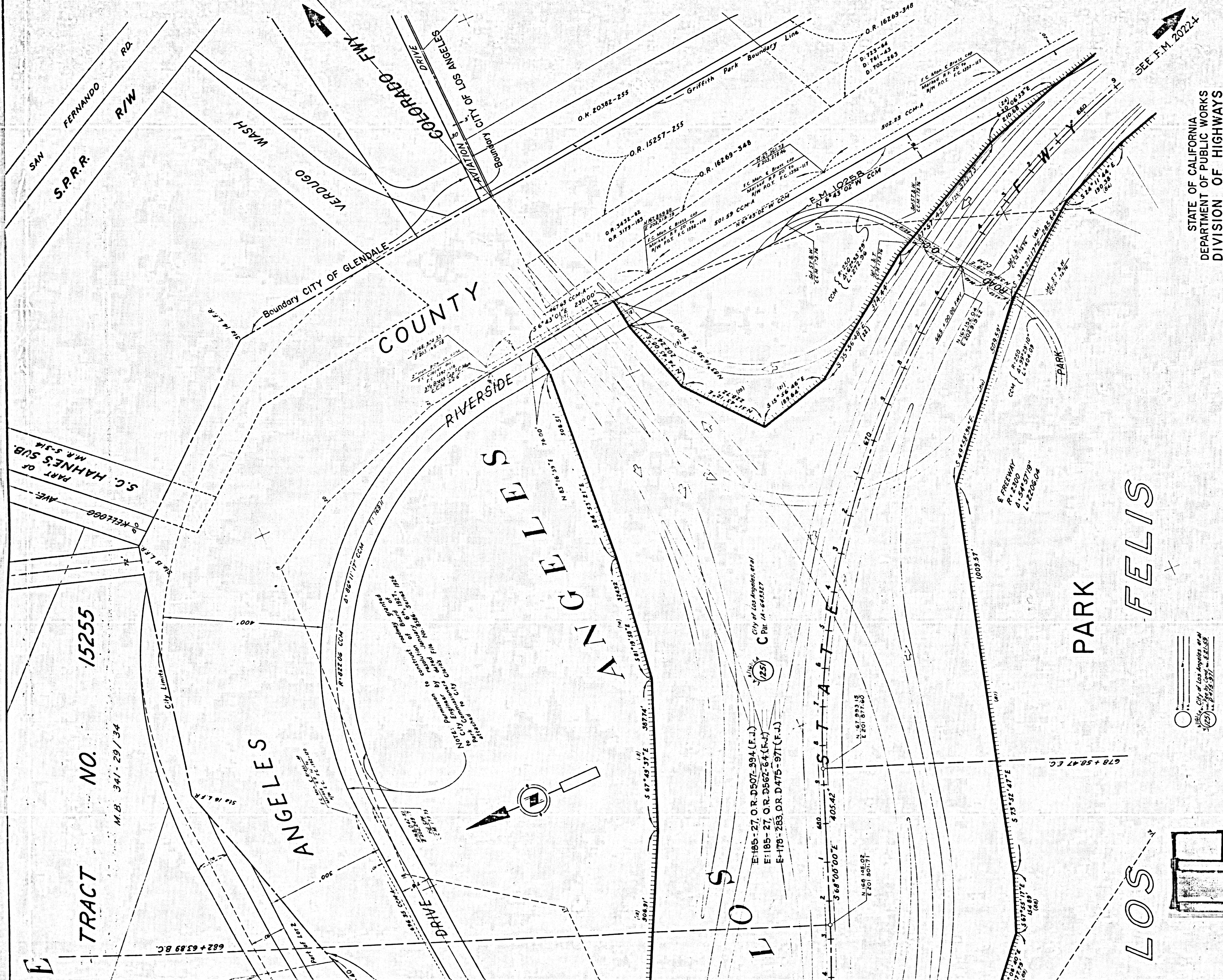
FOR CONTINUATION SEE MAP NO F-2198 LA-161-LA

|      |       |
|------|-------|
| F.M. | 20226 |
| A1   | OF A2 |

TRACT NO. 15255  
M.B. 347-29/34

FOR CONTINUATION SEE MAP NO. F-1162 LA-161-GndI

FOR CONTINUATION SEE MAP NO F-1289 LA-4/161-LA



SEE F.M. 2022-1

STATE OF CALIFORNIA  
DEPARTMENT OF PUBLIC WORKS  
DIVISION OF HIGHWAYS

ROAD: LA-4 / 161 - LA  
**RIGHT OF WAY MAP**  
COLORADO AND VENTURA FWY.,  
INTERCHANGE



F-1290

COORDINATES SHOWN ARE FOR INTERNAL  
USE OF THE DIVISION OF HIGHWAYS AND  
ARE TO BE USED FOR REFERENCE ONLY

THE BEARING N6°43'02\"/>

- City of Los Angeles et al  
C 191-1A-648327
- City of Los Angeles et al  
C 191-1A-648327
- City of Los Angeles et al  
C 191-1A-648327
- City of Los Angeles et al  
C 191-1A-648327
- City of Los Angeles et al  
C 191-1A-648327
- City of Los Angeles et al  
C 191-1A-648327

|      |       |
|------|-------|
| F.M. | 20226 |
| A2   | OF A2 |

REPRODUCIBLE COPY FILED WITH THE L.A. CO. SURVEYOR. 9-62