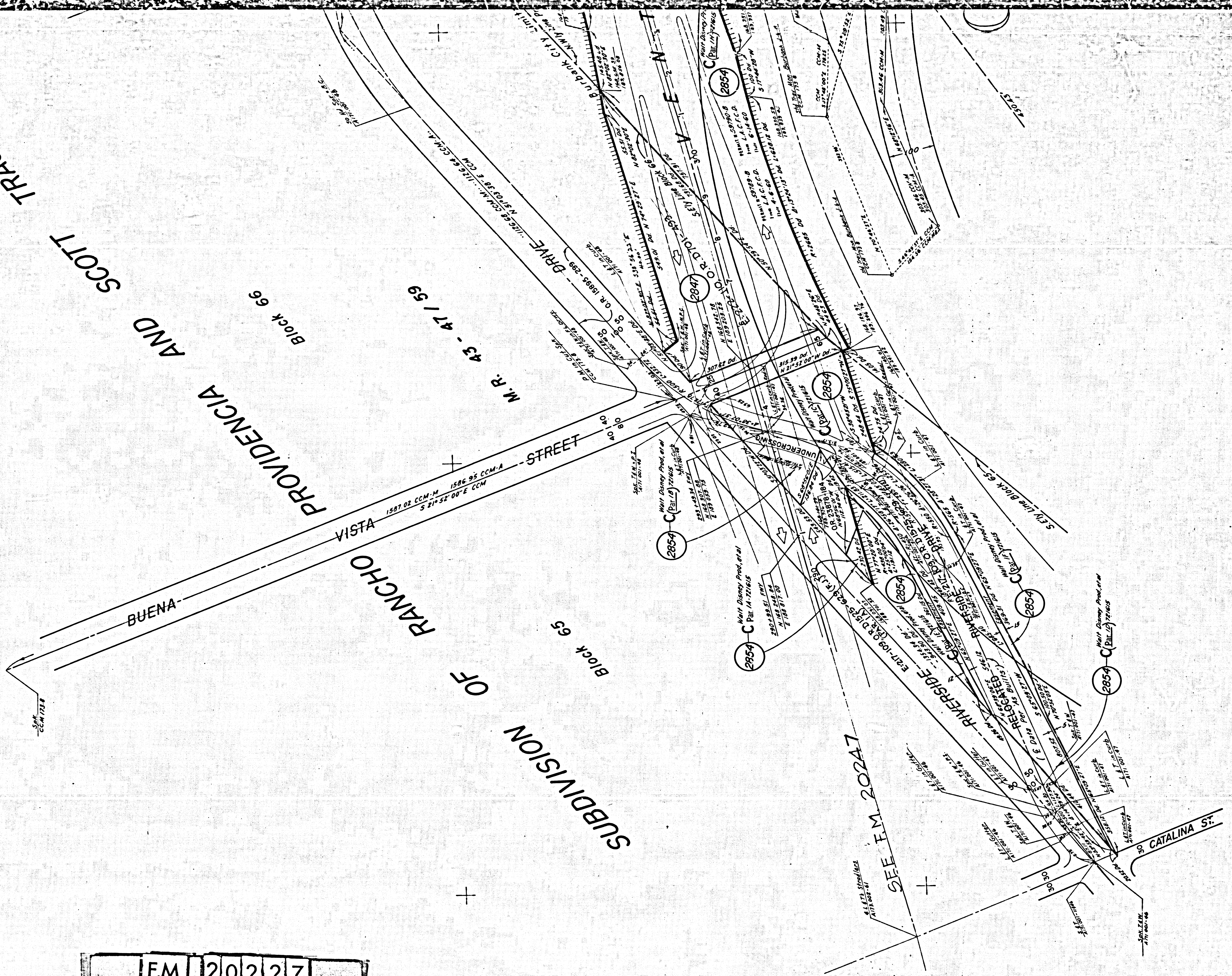


CITY

BUENA VISTA STREET
PROVIDENCIA AND SCOTT TRACT
Block 66
M. R. 43 - 47 / 59
Block 65
SUBDIVISION OF RANCHO

F.M.	20227	
A1	OF	A7

FOR CONTINUATION SEE MAP NO F-2200 LA-161 - Brb



BUR

O F

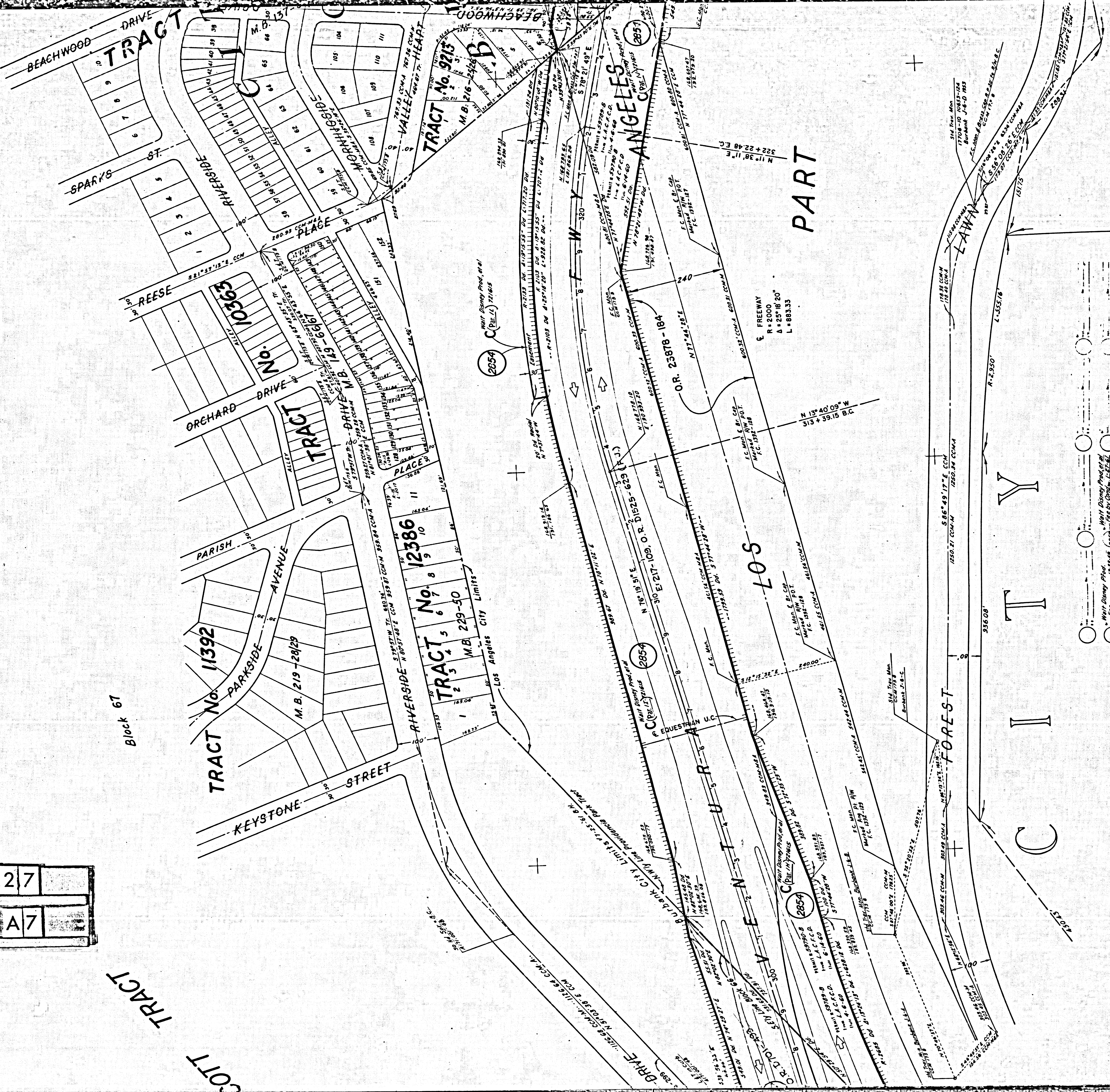
F.M. 202,27
A 2 OF A 7

Part of
Pat. 68
X 10010

TRACT

COTT

Block 67



- North Dimey Prod. et al. M.B. 219-2829
- North Dimey Prod. et al. M.B. 219-2829
- North Dimey Prod. et al. M.B. 219-2829
- North Dimey Prod. et al. M.B. 219-2829
- North Dimey Prod. et al. M.B. 219-2829
- North Dimey Prod. et al. M.B. 219-2829
- North Dimey Prod. et al. M.B. 219-2829
- North Dimey Prod. et al. M.B. 219-2829
- North Dimey Prod. et al. M.B. 219-2829
- North Dimey Prod. et al. M.B. 219-2829

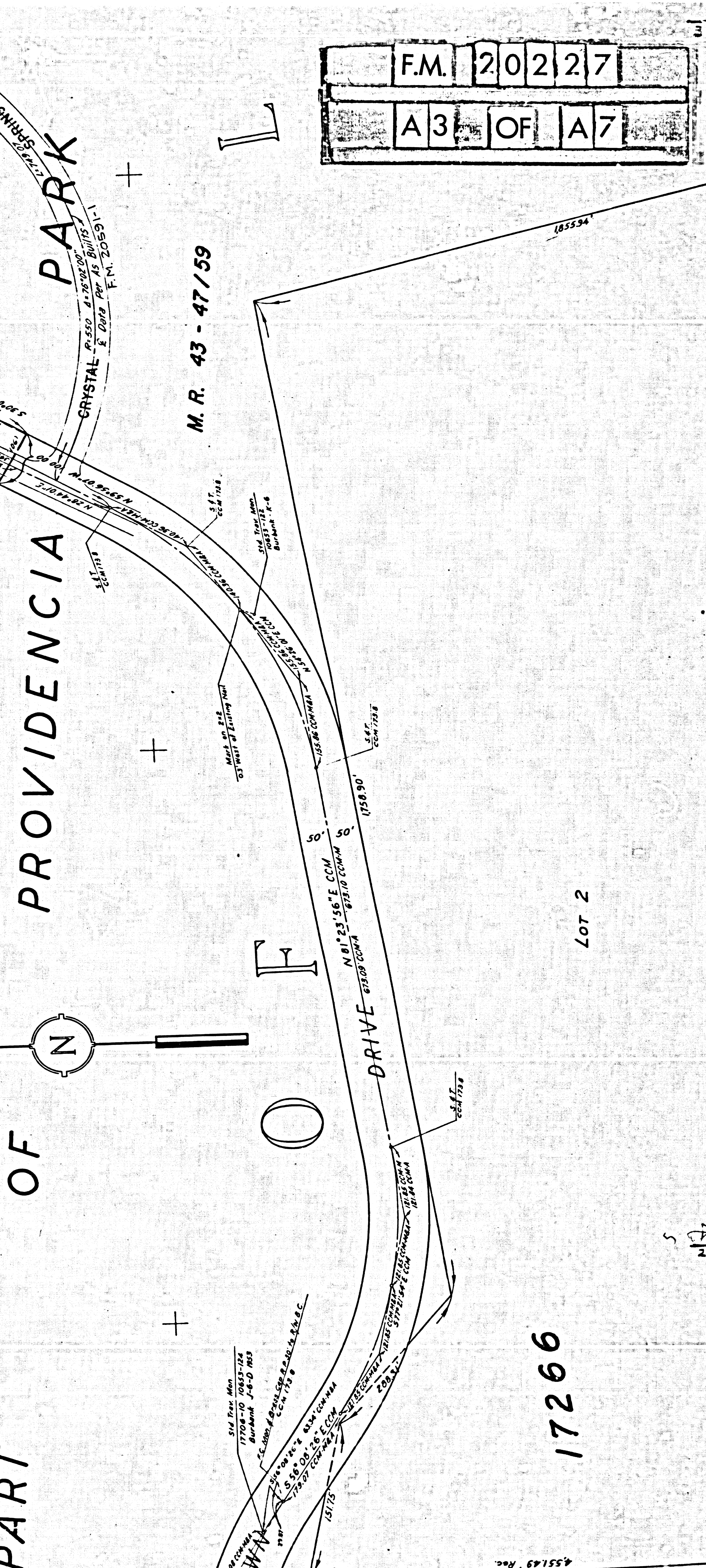
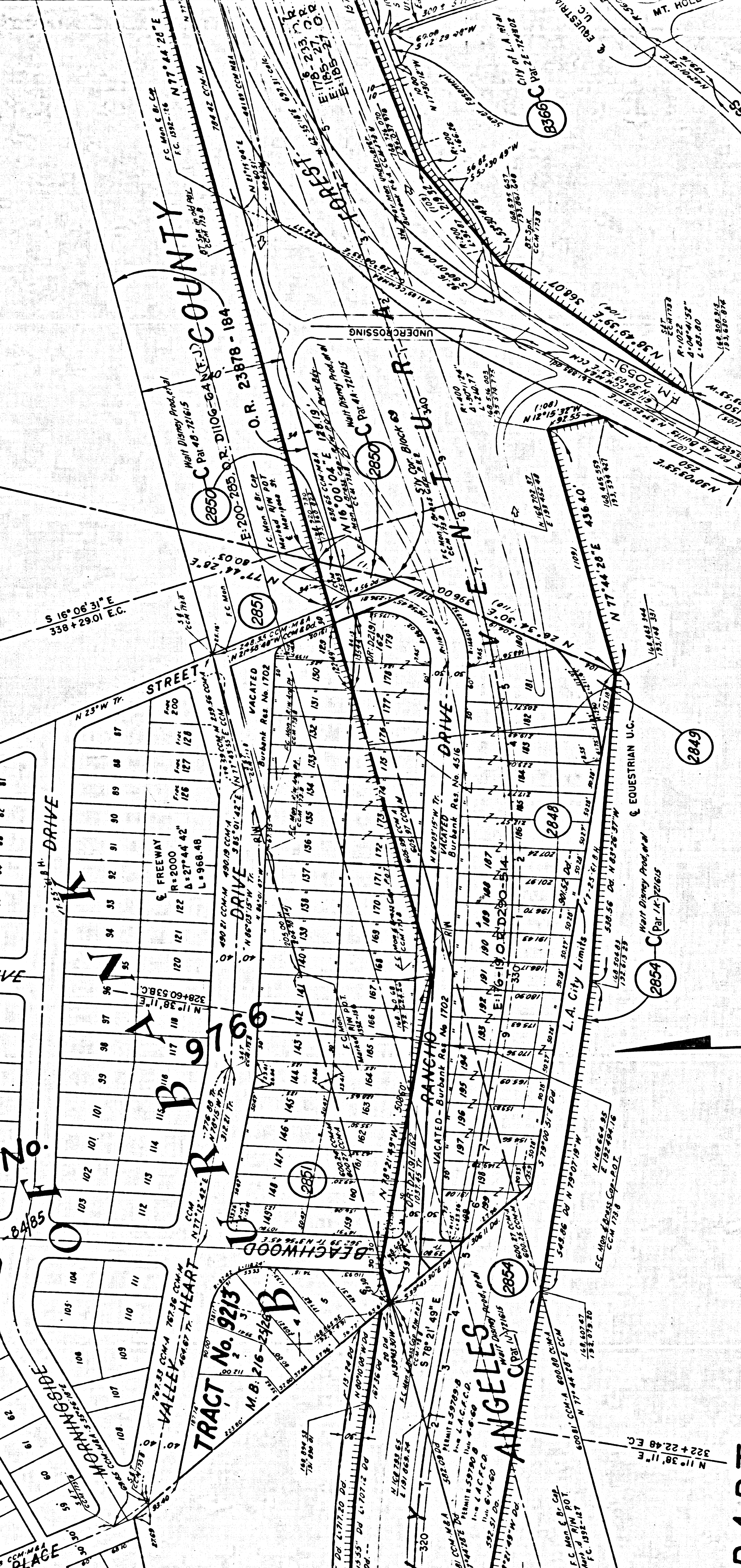
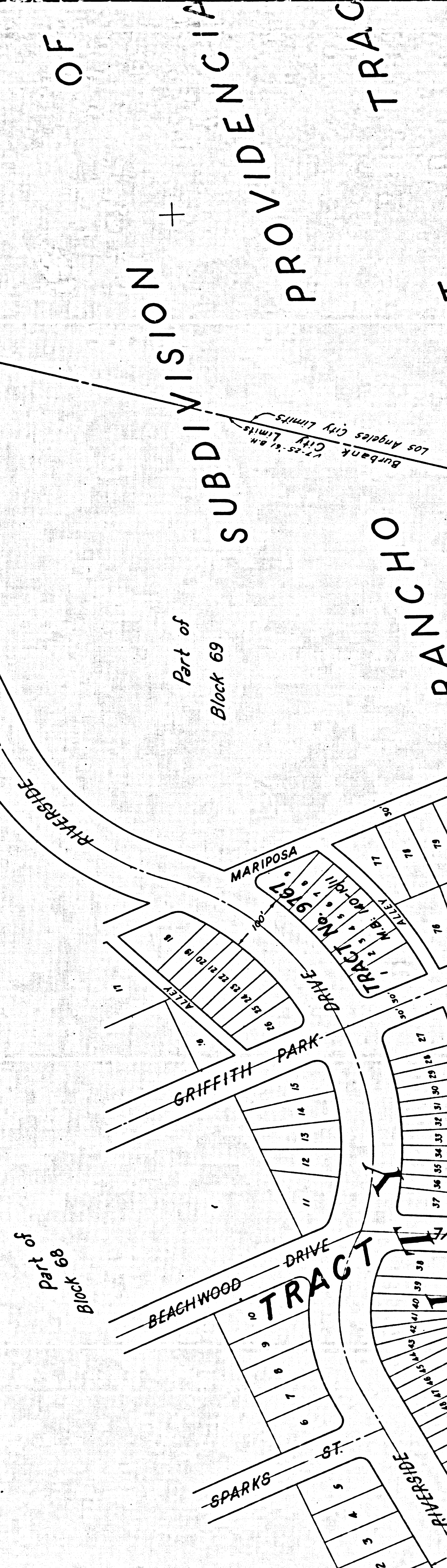
Lot 1

17266

TRACT No. M.B. 425-36/38

BURBANK

Part of
Block 69
SUBDIVISION +
PROVIDENCIA
RANCHO
SCOTT
M.R. 43-47/59



17266

Lot 2

F.M. 20227
A3 OF A7

45549 Rec.

18

TRACT No. 10116
M.B. 143-98/99

SION +
AND +
PROVIDENCIA
TRACT

OTT
M.R. 43-47/59

RIVER-SIDE
BANK
WASH
RANCHO

FLOOD
VARIES

LAWN
ROAD

SAN
DIEGO
COUNTY

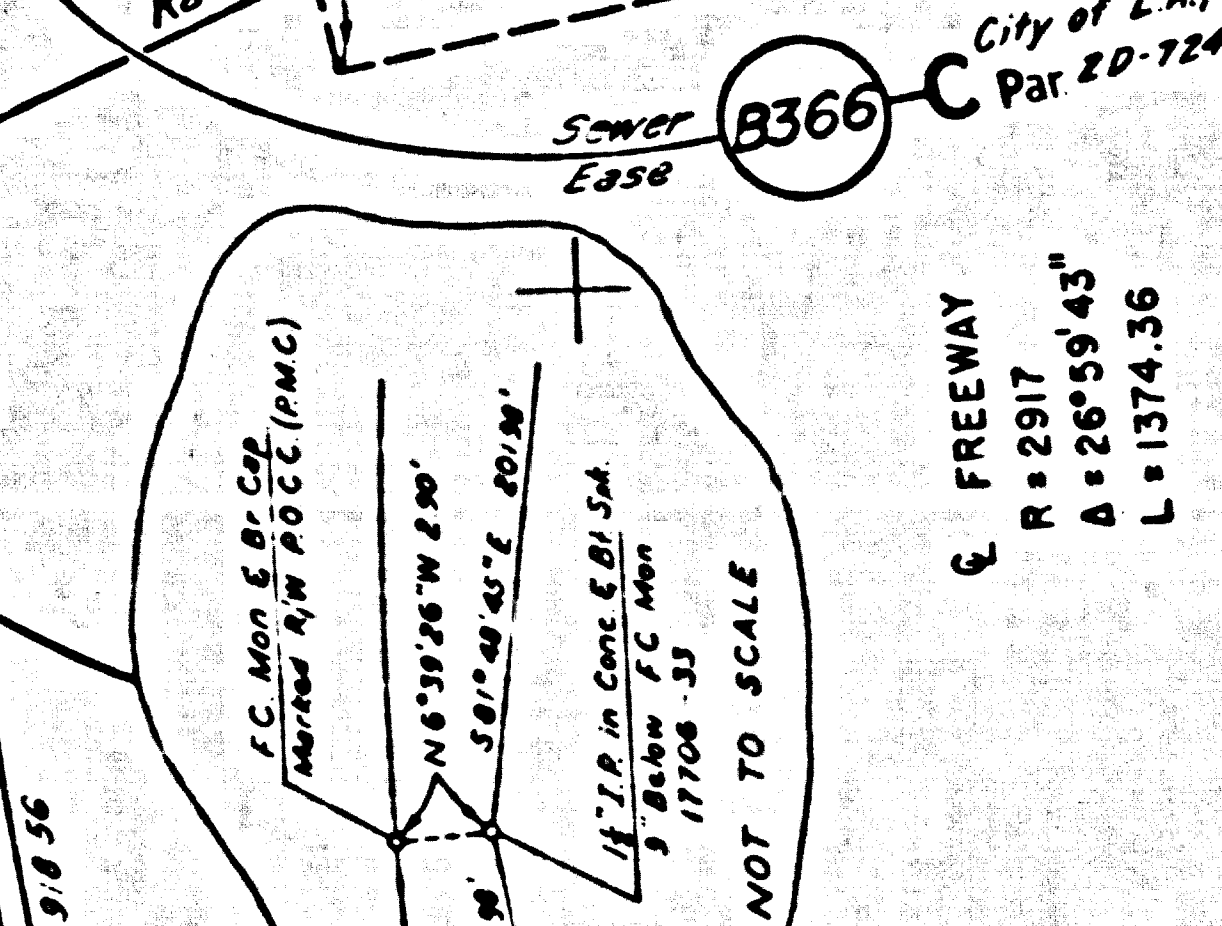
INTERVALE

MT. HOLLYWOOD DR.

SPRINGS

PARK

43-47/59



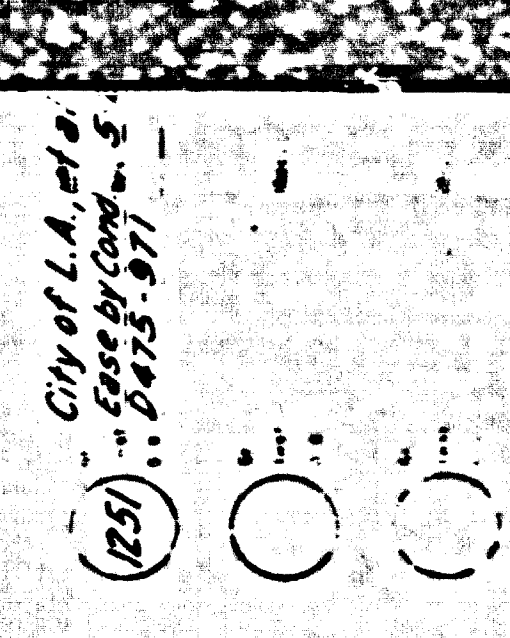
Note: Permission for the opening, establishment and maintenance of this roadway granted by Resolution No. 909 of the Board of Port Commissioners, recorded in Book 26, Page 20 of Miscellaneous Deeds and Data.

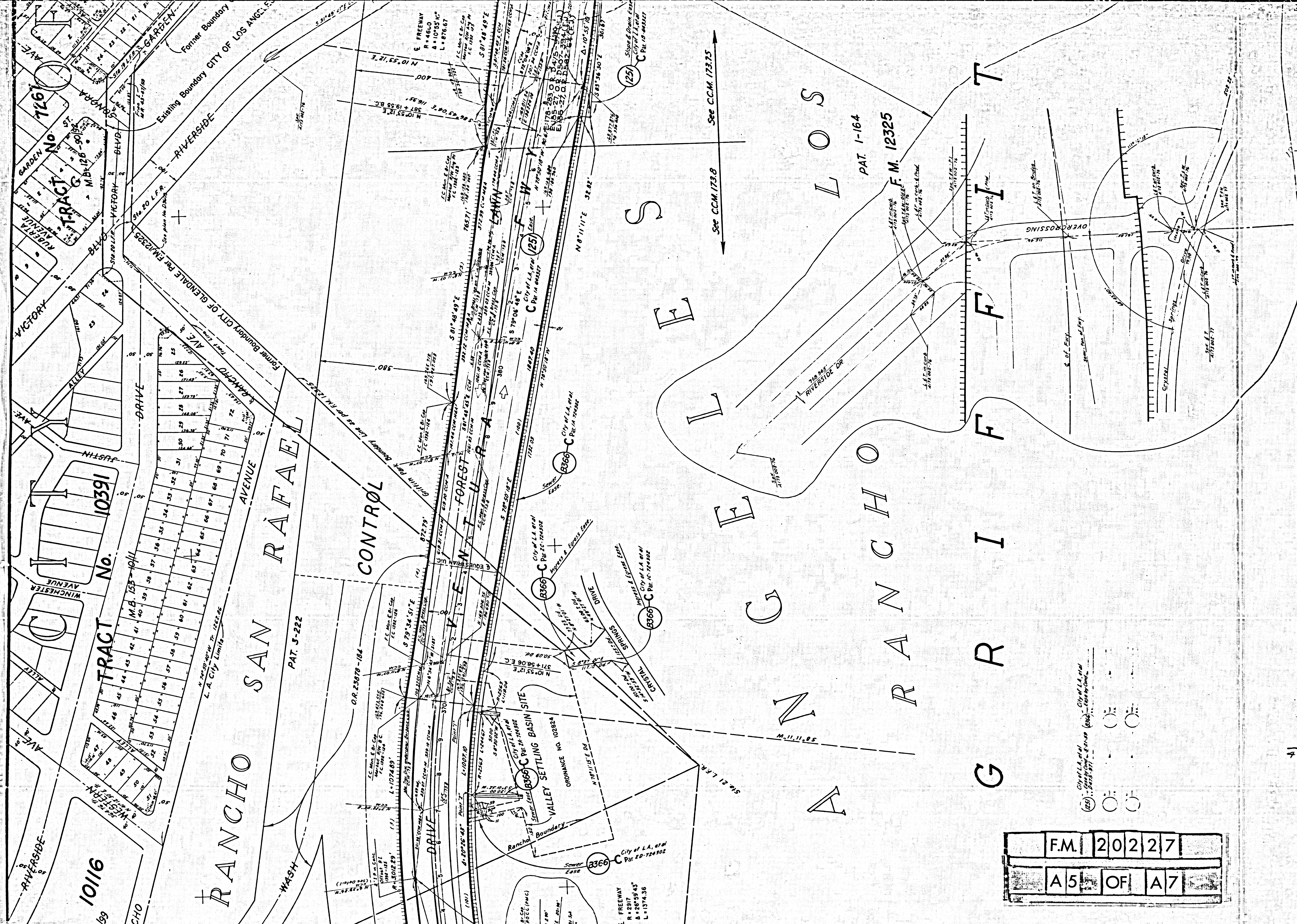
City of L.A., et al
Pat. 20-724302

City of L.A., et al
Pat. 24-724302

City of L.A., et al
Pat. 21-724302

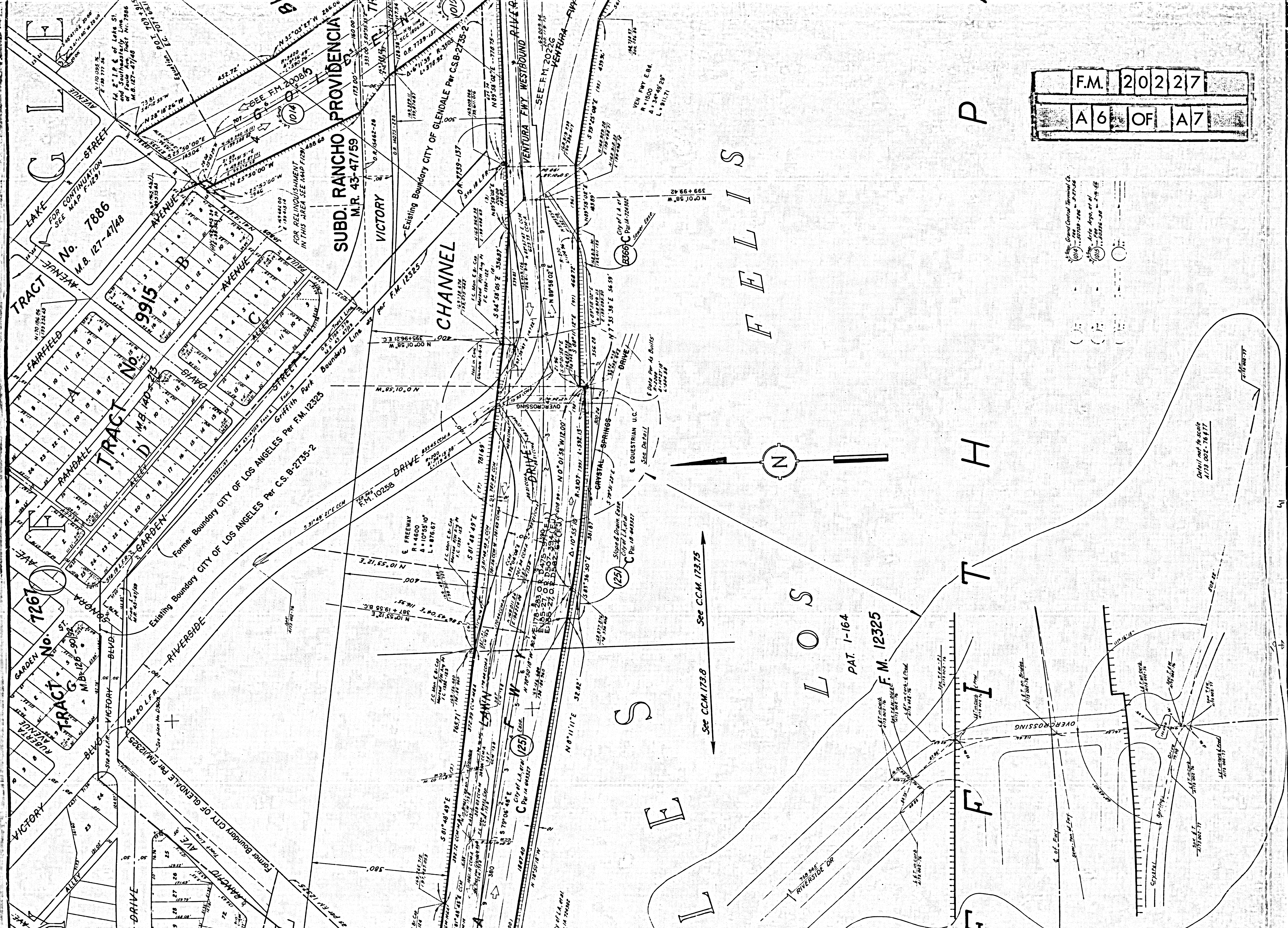
F.M.	202217
A 4	OF A 7





F.M. 20227
 A5 OF A7

City of L.A., et al.
 Ordinance No. 102824
 City of L.A., et al.
 Ordinance No. 102825
 City of L.A., et al.
 Ordinance No. 102826
 City of L.A., et al.
 Ordinance No. 102827
 City of L.A., et al.
 Ordinance No. 102828
 City of L.A., et al.
 Ordinance No. 102829
 City of L.A., et al.
 Ordinance No. 102830
 City of L.A., et al.
 Ordinance No. 102831
 City of L.A., et al.
 Ordinance No. 102832
 City of L.A., et al.
 Ordinance No. 102833
 City of L.A., et al.
 Ordinance No. 102834
 City of L.A., et al.
 Ordinance No. 102835
 City of L.A., et al.
 Ordinance No. 102836
 City of L.A., et al.
 Ordinance No. 102837
 City of L.A., et al.
 Ordinance No. 102838
 City of L.A., et al.
 Ordinance No. 102839
 City of L.A., et al.
 Ordinance No. 102840
 City of L.A., et al.
 Ordinance No. 102841
 City of L.A., et al.
 Ordinance No. 102842
 City of L.A., et al.
 Ordinance No. 102843
 City of L.A., et al.
 Ordinance No. 102844
 City of L.A., et al.
 Ordinance No. 102845
 City of L.A., et al.
 Ordinance No. 102846
 City of L.A., et al.
 Ordinance No. 102847
 City of L.A., et al.
 Ordinance No. 102848
 City of L.A., et al.
 Ordinance No. 102849
 City of L.A., et al.
 Ordinance No. 102850
 City of L.A., et al.
 Ordinance No. 102851
 City of L.A., et al.
 Ordinance No. 102852
 City of L.A., et al.
 Ordinance No. 102853
 City of L.A., et al.
 Ordinance No. 102854
 City of L.A., et al.
 Ordinance No. 102855
 City of L.A., et al.
 Ordinance No. 102856
 City of L.A., et al.
 Ordinance No. 102857
 City of L.A., et al.
 Ordinance No. 102858
 City of L.A., et al.
 Ordinance No. 102859
 City of L.A., et al.
 Ordinance No. 102860
 City of L.A., et al.
 Ordinance No. 102861
 City of L.A., et al.
 Ordinance No. 102862
 City of L.A., et al.
 Ordinance No. 102863
 City of L.A., et al.
 Ordinance No. 102864
 City of L.A., et al.
 Ordinance No. 102865
 City of L.A., et al.
 Ordinance No. 102866
 City of L.A., et al.
 Ordinance No. 102867
 City of L.A., et al.
 Ordinance No. 102868
 City of L.A., et al.
 Ordinance No. 102869
 City of L.A., et al.
 Ordinance No. 102870
 City of L.A., et al.
 Ordinance No. 102871
 City of L.A., et al.
 Ordinance No. 102872
 City of L.A., et al.
 Ordinance No. 102873
 City of L.A., et al.
 Ordinance No. 102874
 City of L.A., et al.
 Ordinance No. 102875
 City of L.A., et al.
 Ordinance No. 102876
 City of L.A., et al.
 Ordinance No. 102877
 City of L.A., et al.
 Ordinance No. 102878
 City of L.A., et al.
 Ordinance No. 102879
 City of L.A., et al.
 Ordinance No. 102880
 City of L.A., et al.
 Ordinance No. 102881
 City of L.A., et al.
 Ordinance No. 102882
 City of L.A., et al.
 Ordinance No. 102883
 City of L.A., et al.
 Ordinance No. 102884
 City of L.A., et al.
 Ordinance No. 102885
 City of L.A., et al.
 Ordinance No. 102886
 City of L.A., et al.
 Ordinance No. 102887
 City of L.A., et al.
 Ordinance No. 102888
 City of L.A., et al.
 Ordinance No. 102889
 City of L.A., et al.
 Ordinance No. 102890
 City of L.A., et al.
 Ordinance No. 102891
 City of L.A., et al.
 Ordinance No. 102892
 City of L.A., et al.
 Ordinance No. 102893
 City of L.A., et al.
 Ordinance No. 102894
 City of L.A., et al.
 Ordinance No. 102895
 City of L.A., et al.
 Ordinance No. 102896
 City of L.A., et al.
 Ordinance No. 102897
 City of L.A., et al.
 Ordinance No. 102898
 City of L.A., et al.
 Ordinance No. 102899
 City of L.A., et al.
 Ordinance No. 102900
 City of L.A., et al.



City of Los Angeles
 1018 ...
 1019 ...

Detail not to scale
 A73 002-76877

See C.C.M. 173.8

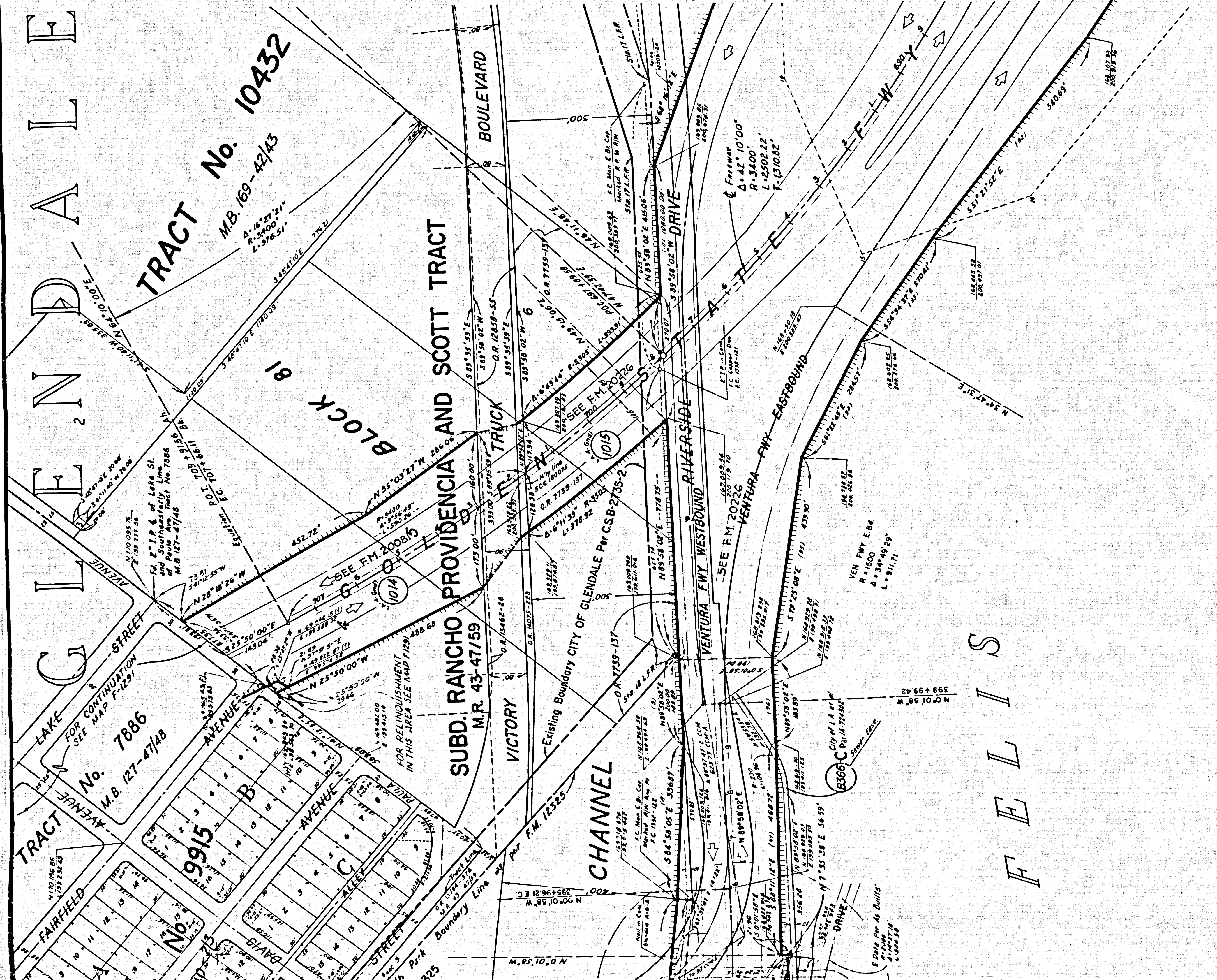
See C.C.M. 173.75

PAT. 1-164

F.M. 12325

OVERCROSSING

of Hwy



FOR CONTINUATION SEE MAP NO F-1290 LA-4/161-LA

F.M. 20227
A7 OF A7

The bearing S.31°49'21"E along the E of Riverside Drive from P.I. @ North RVN intersection was taken as the basis of bearings for this map.

COORDINATES SHOWN ARE FOR INTERNAL USE OF THE DIVISION OF HIGHWAYS AND ARE TO BE USED FOR REFERENCE ONLY

STATE OF CALIFORNIA
DEPARTMENT OF PUBLIC WORKS
DIVISION OF HIGHWAYS
ROAD: LA-161-LA, Brb.
RIGHT OF WAY MAP
GOLDEN STATE FWY
TO RIVERSIDE DRIVE
I.M. 40

Reproducible copy filed with Los Angeles Co. Surveyor 4-63

F-2198

City of Grand Central Terminal Co.
(1014) - 50709-206 - 5-17-56
City of Arto Argo et al.
(1015) - 50816-30 - 4-14-56

