

F.M. 20244

CITY

PORTION

OF

LOT 32 +

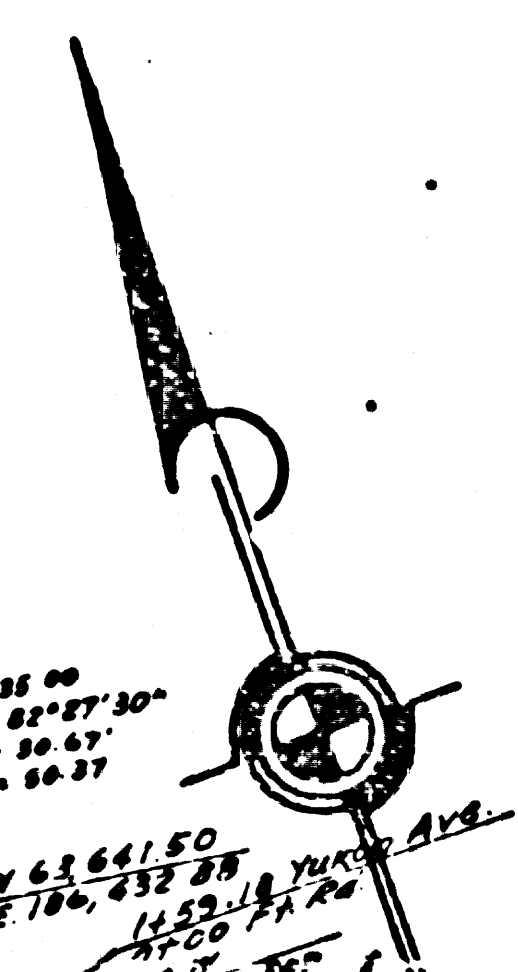
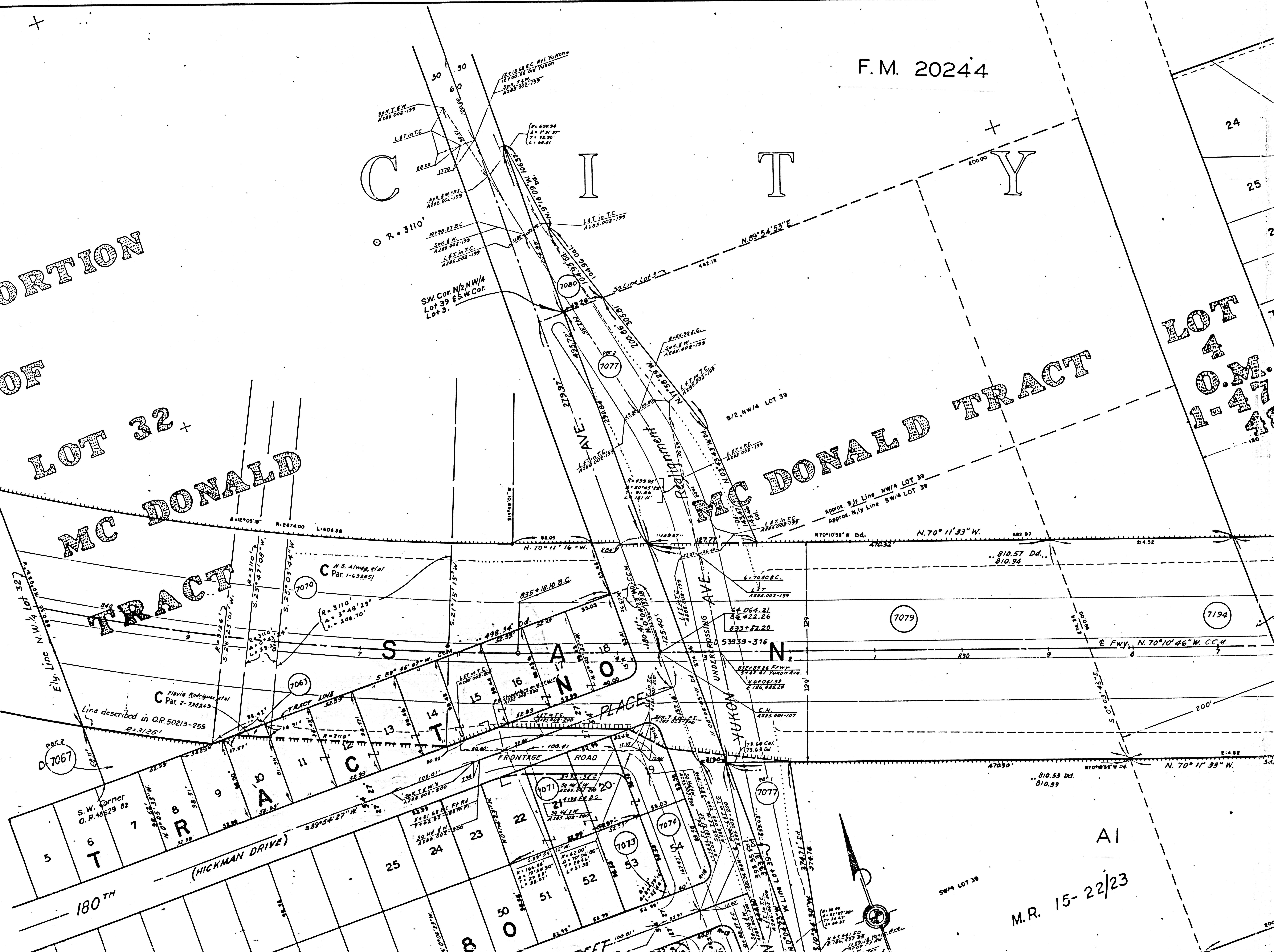
MC DONALD TRACT

LOT 4

O.M.

1-47-48

LIMITS THIS MAP



M.R. 15-22/23

A1

SW/4 LOT 39

180TH

(HICKMAN DRIVE)

STREET

STREET

STREET

STREET

STREET

STREET

STREET

STREET

STREET

STREET

STREET

STREET

STREET

STREET

STREET

STREET

STREET

STREET

STREET

STREET

STREET

STREET

STREET

STREET

STREET

STREET

STREET

STREET

STREET

STREET

STREET

STREET

STREET

STREET

STREET



LOT 44
F.M. 20244

F.M. 20244

PORTION
OF LOT 44
MC DONALD
TRACT

TRACT

TRACT

NO. 18

M.R. 15-22/23

SW/4 LOT 39

ST. S. 89° 55' 02" W. C.C.M. 227.00'

N. 70° 11' 33" W. 802.97' 817.94'

E. F.M.Y. N. 70° 10' 46" W. C.C.M. 214.52'

N. 70° 11' 33" W. 214.88'

N. 70° 11' 33" W. 810.53 Dd. 810.89'

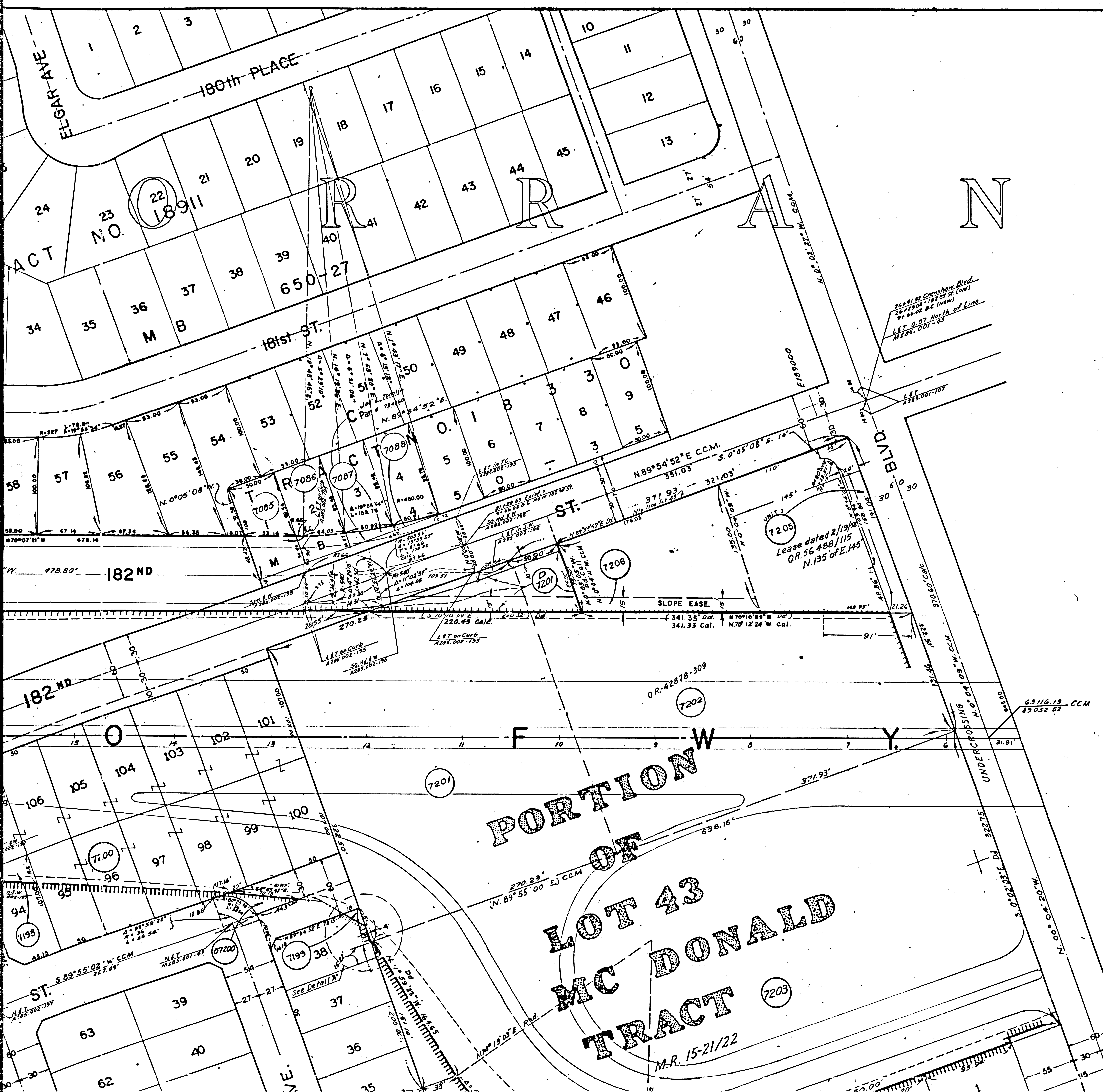
N. 70° 11' 15" W. 478.80'

816+44.76 F.M.Y.

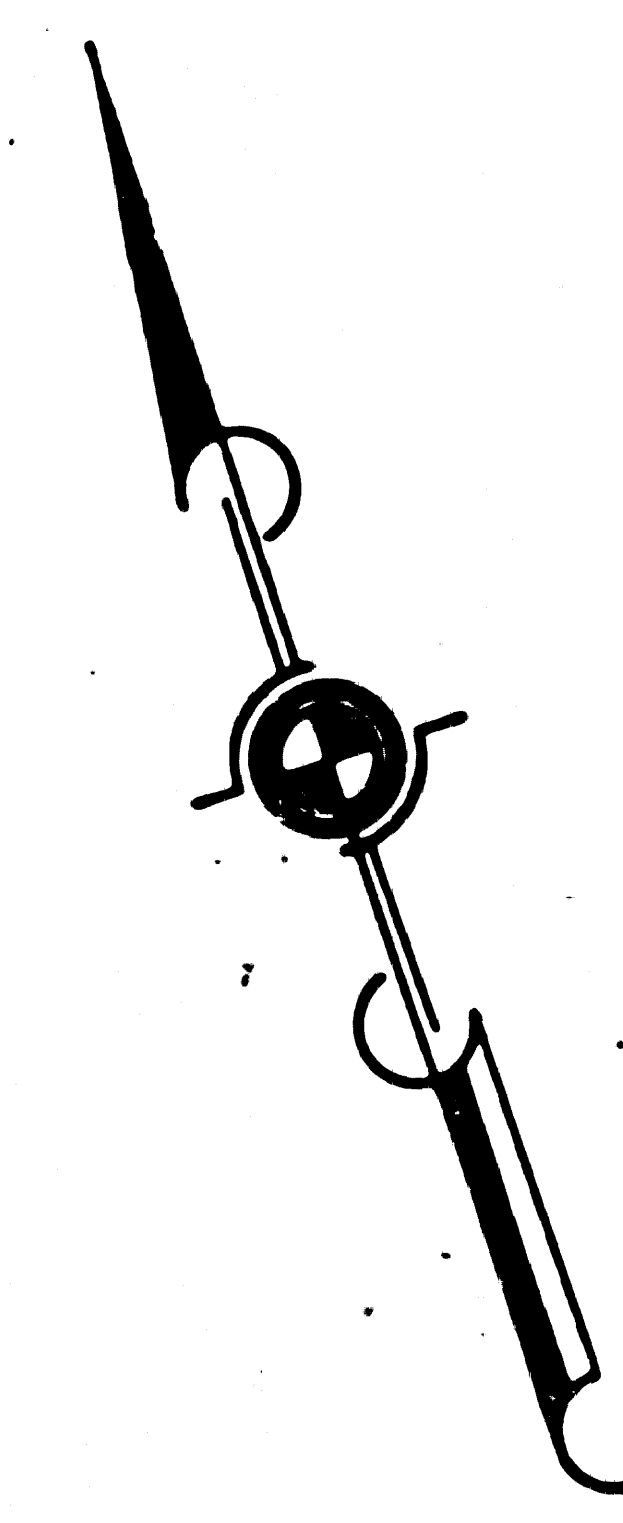
S. 89° 55' 02" W. C.C.M. 227.00'

183RD 257.00 TR.

ST. S. 89° 55' 02" W. C.C.M. 227.00'

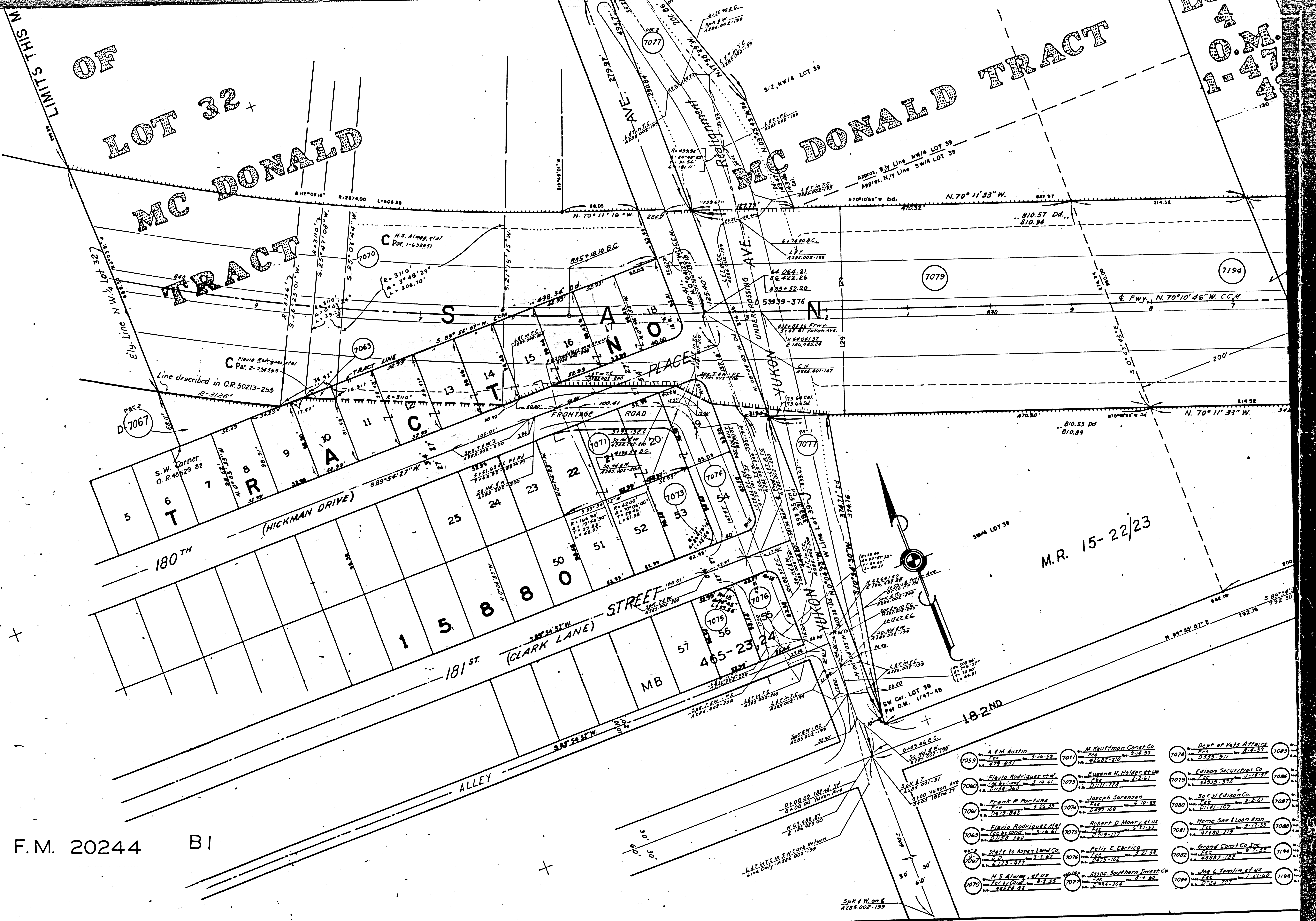


N C E



COORDINATES SHOWN ARE FOR INTERNAL USE OF THE DIVISION OF HIGHWAYS AND ARE TO BE USED FOR REFERENCE ONLY

11M. 215-D-4



OF
LOT 32 +
MC DONALD
TRACT

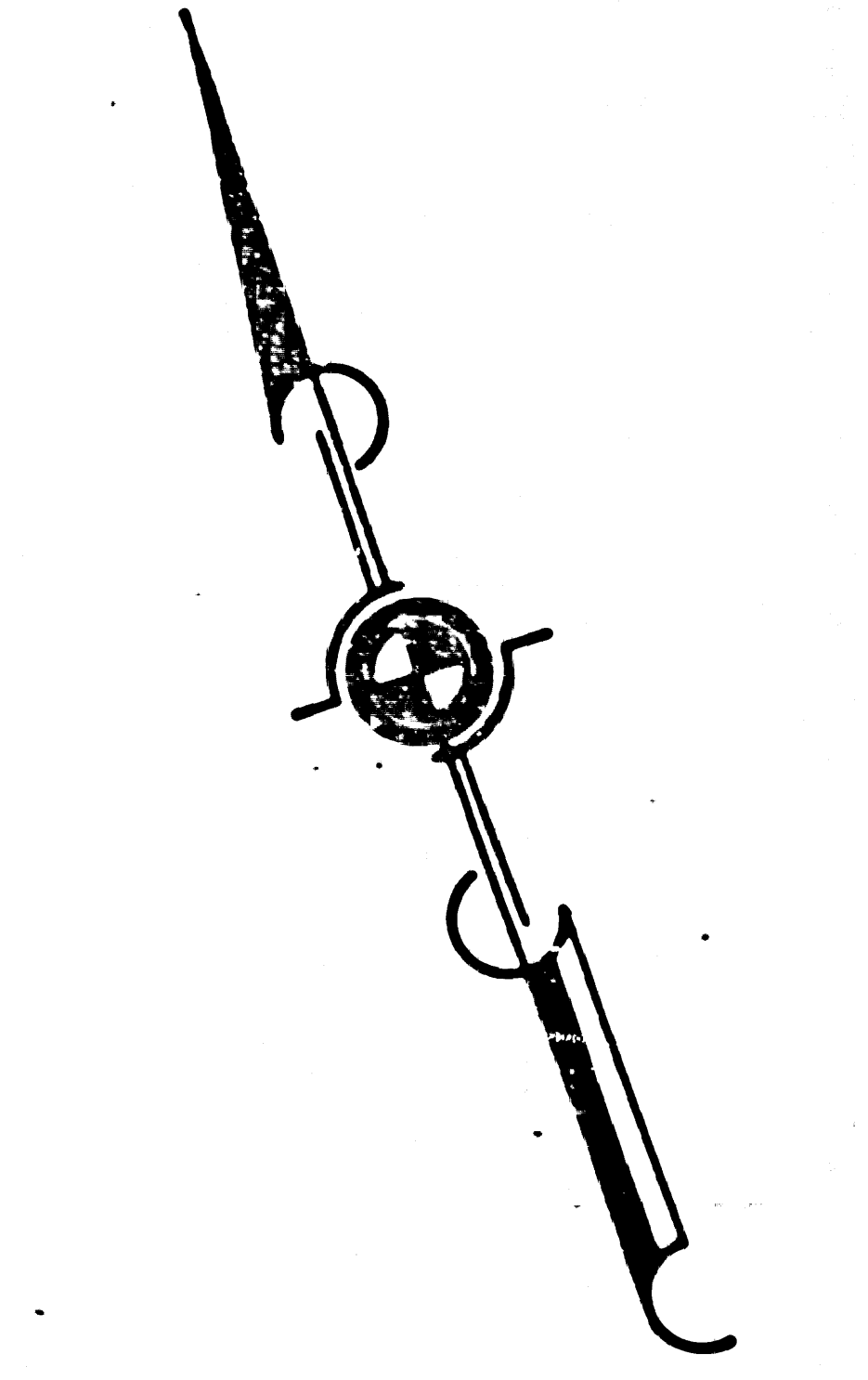
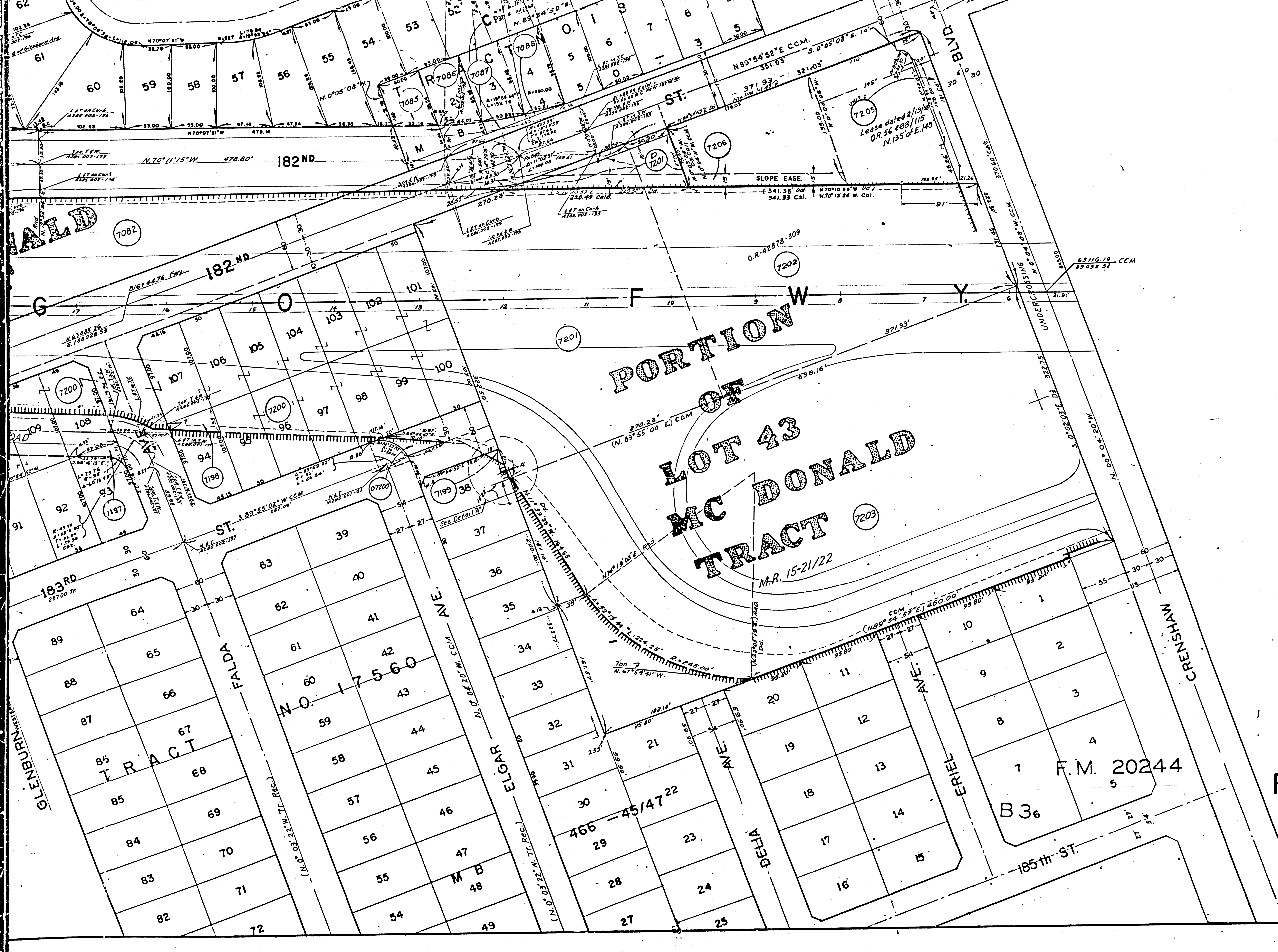
MC DONALD TRACT

1-47-4

M.R. 15-22/23

F.M. 20244 BI

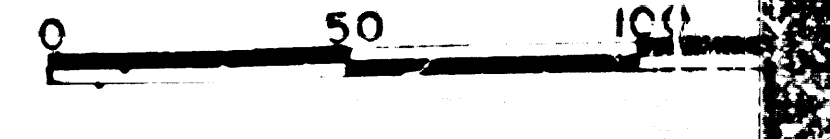
7059	A & M Austin FCC 5-26-33	7071	M. Knuffman Const Co FCC 3-14-33	7070	Dept of Vets Affairs FCC 8-4-33	7085	
7060	Flavia Rodriguez et al FCC by Cond 3-16-31	7073	Eugene N Holder et al FCC 11-11-33	7079	Edison Securities Co FCC 3-18-33	7086	
7061	Frank R Porfune FCC 5-26-33	7074	Joseph Sorenson FCC 6-10-32	7080	So Cal Edison Co FCC 11-11-33	7087	
7063	Flavia Rodriguez et al FCC 11-24-30	7075	Robert D Mowry et al FCC 4-30-33	7081	Home Sav & Loan Assn FCC 8-17-33	7088	
7067	State to Aspen Land Co FCC 3-1-32	7076	Felix E Carrico FCC 3-21-33	7082	Grand Const Co Inc FCC 8-17-33	7194	
7070	H S Alway et al FCC by Cond 8-7-33	7077	Assoc Southern Invest Co FCC 2-4-32	7084	Jos & Tomlin et al FCC 1-21-32	7195	



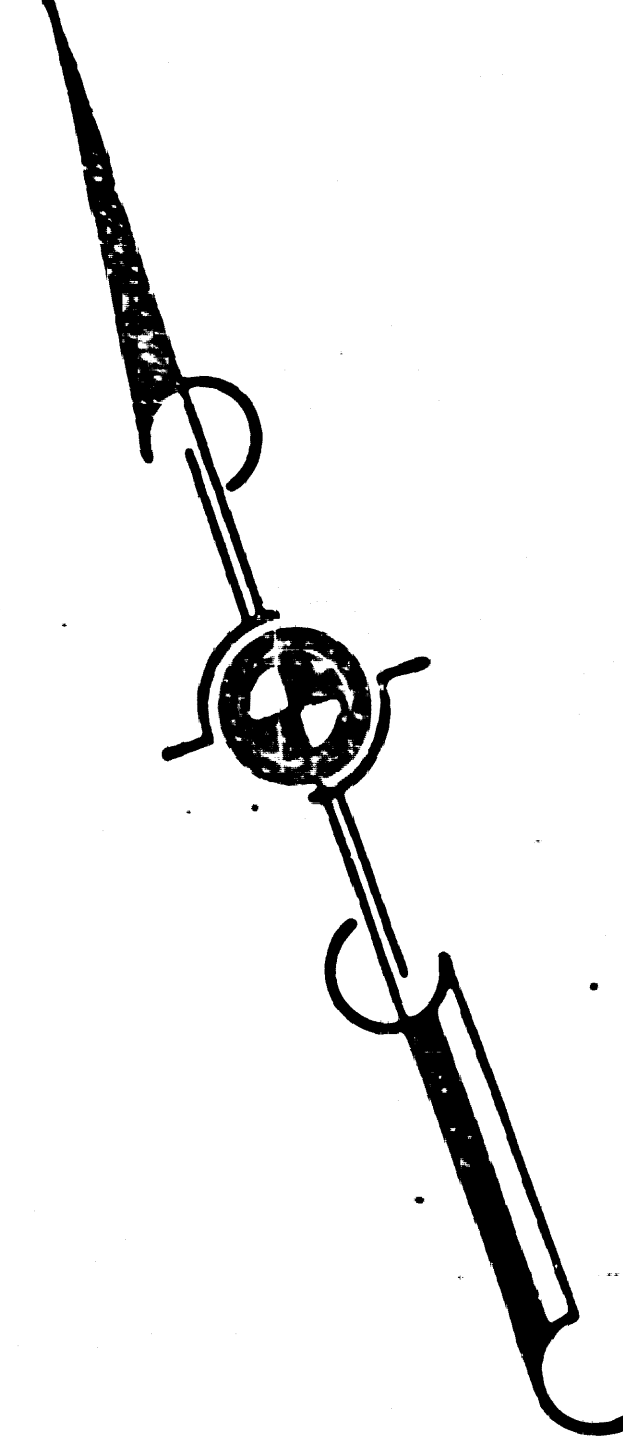
COORDINATES SHOWN
 USE OF THE DIVISION
 ARE TO BE USED FOR

The bearing $N 0^{\circ} 04' 03'' W$ along
 from 182nd St. South was taken
 for this map.

STATE OF
 DEPARTMENT OF
 DIVISION OF
 ROAD: VII -
RIGHT OF
 CRENSHAW
 730 FEET ± W'LY
 Reproducible copy filed with c



FOR CONTINUATION SEE MAP NO. F-1914



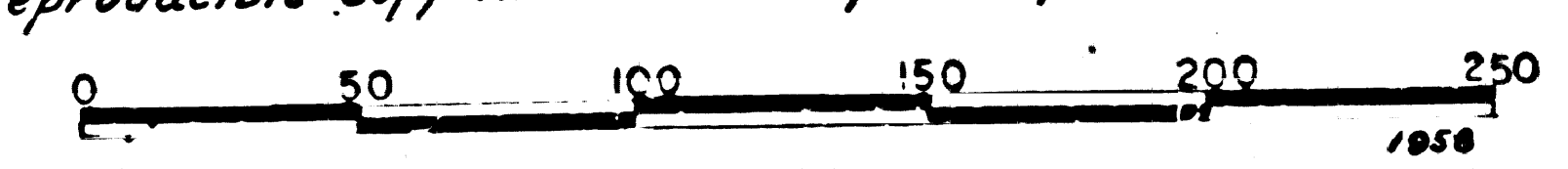
COORDINATES SHOWN ARE FOR INTERNAL USE OF THE DIVISION OF HIGHWAYS AND ARE TO BE USED FOR REFERENCE ONLY

I.M. 25-D-4
M.M. 198 (PORTION)

The bearing $N 0^{\circ} 04' 03'' W$ along the $\&$ of Crenshaw Blvd. from 182nd St. South was taken as the basis of bearings for this map.

STATE OF CALIFORNIA
DEPARTMENT OF PUBLIC WORKS
DIVISION OF HIGHWAYS,
ROAD: VII - L.A. - 158 - Tor.
RIGHT OF WAY MAP

CRENSHAW BLVD. TO
730 FEET \pm W'LY. OF YUKON AVE.
Reproducible copy filed with county surveyor March-63



F-1915

