

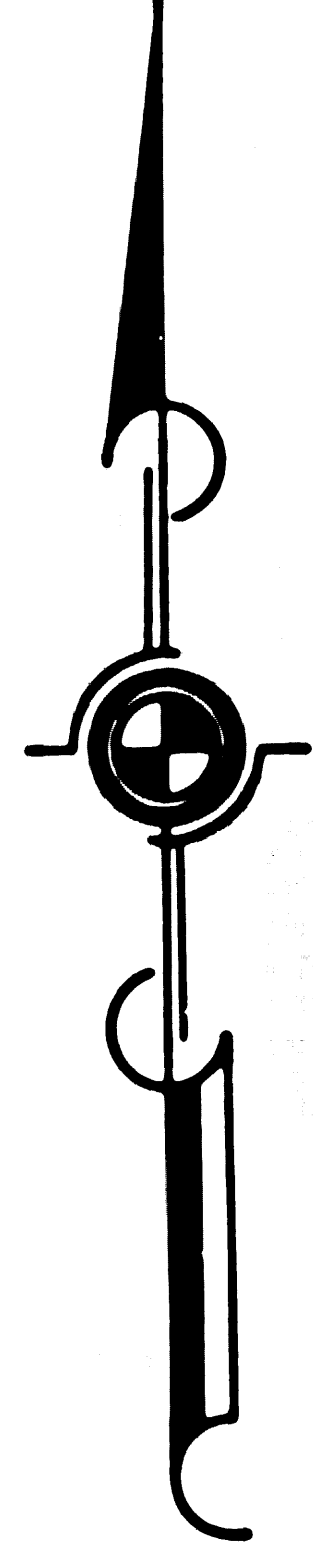
56+27.69-186.7M  
23+20.09 West.  
A 285.001-29  
L.A. CE. Mon.  
P.L. & W. (1953)  
L & T-L.A. # 69 24  
Pg. 8 (1926)

- S 89°55'42"W. 2000.92 A/L C.C.M. -

ST.

F.M. 20262 AI OF 3

MC DONALD



AVE.

CITY OF TORRANCE  
CITY OF LOS ANGELES

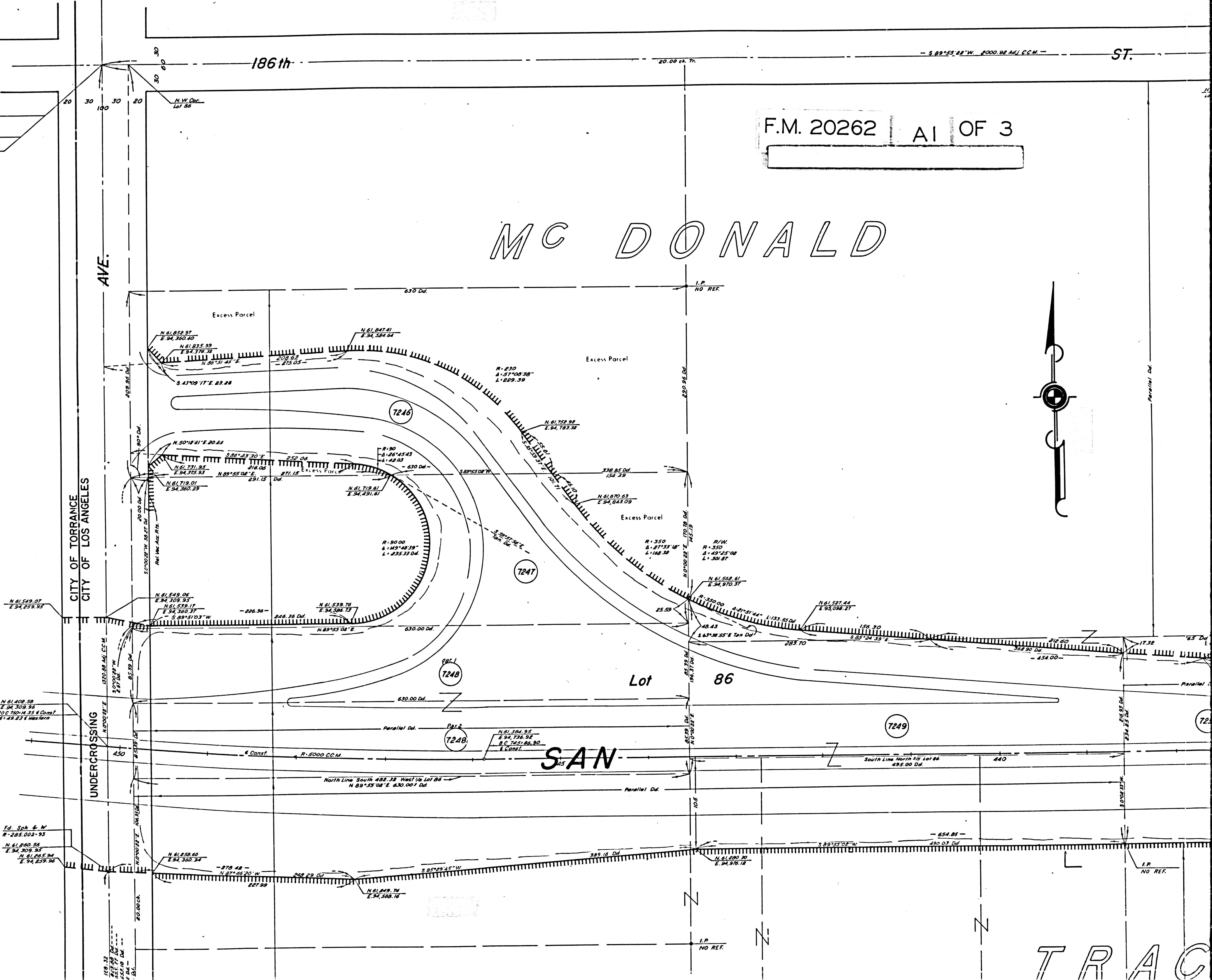
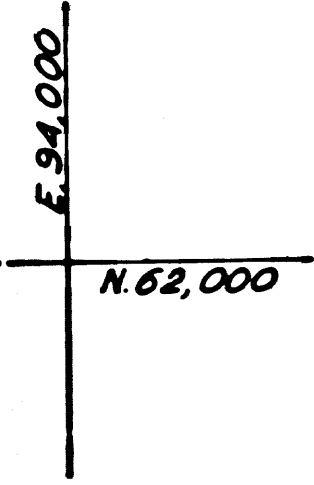
UNDERCROSSING

Lot 86

SAN

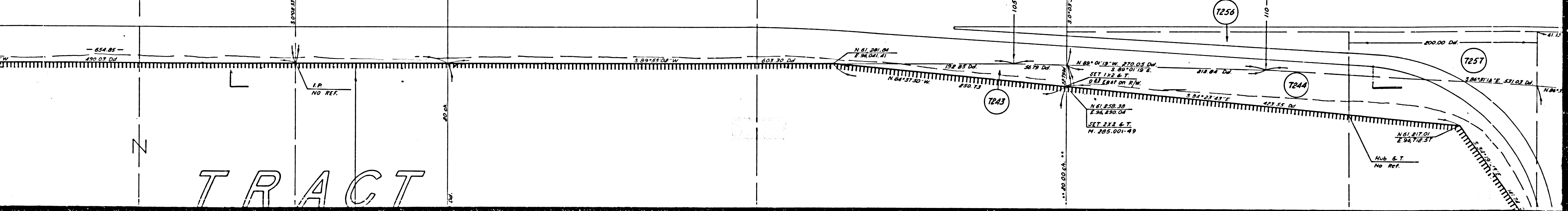
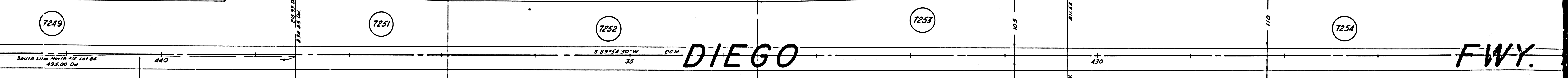
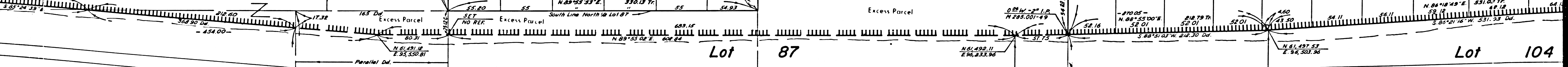
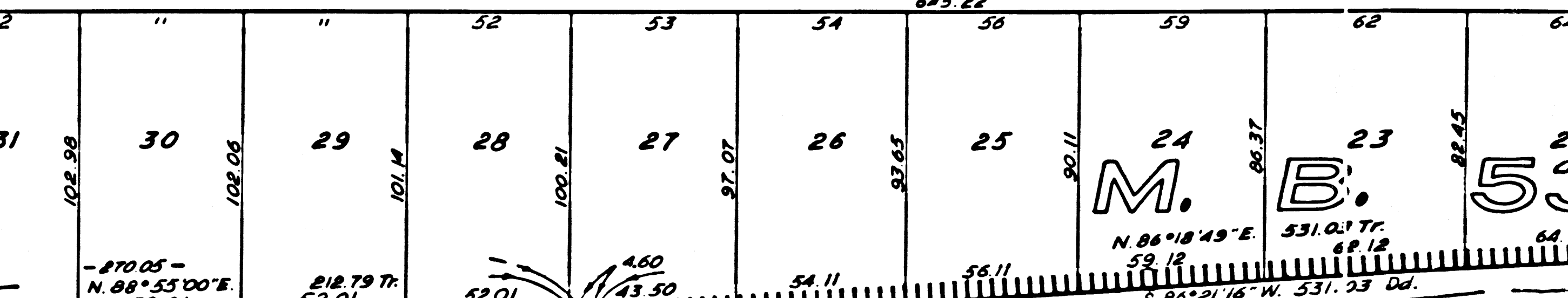
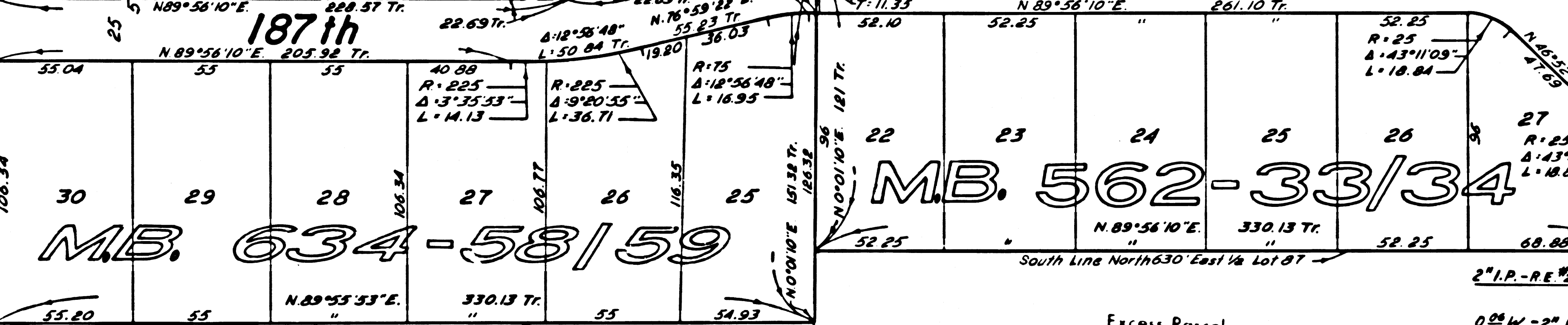
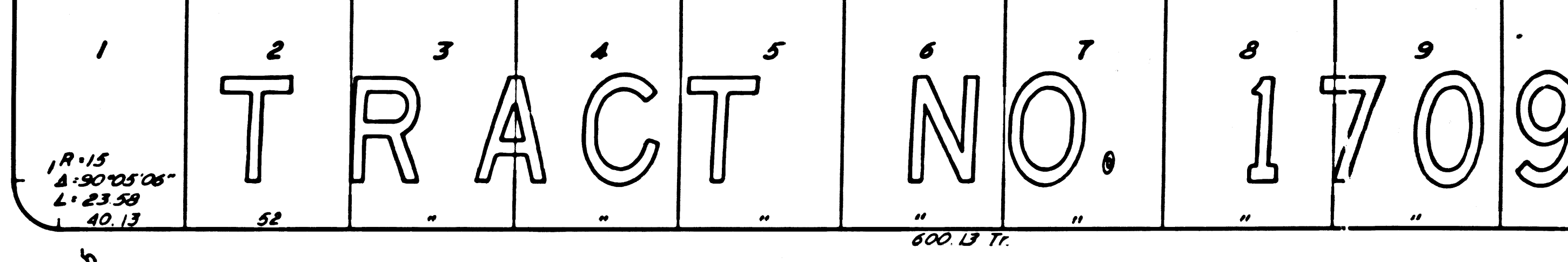
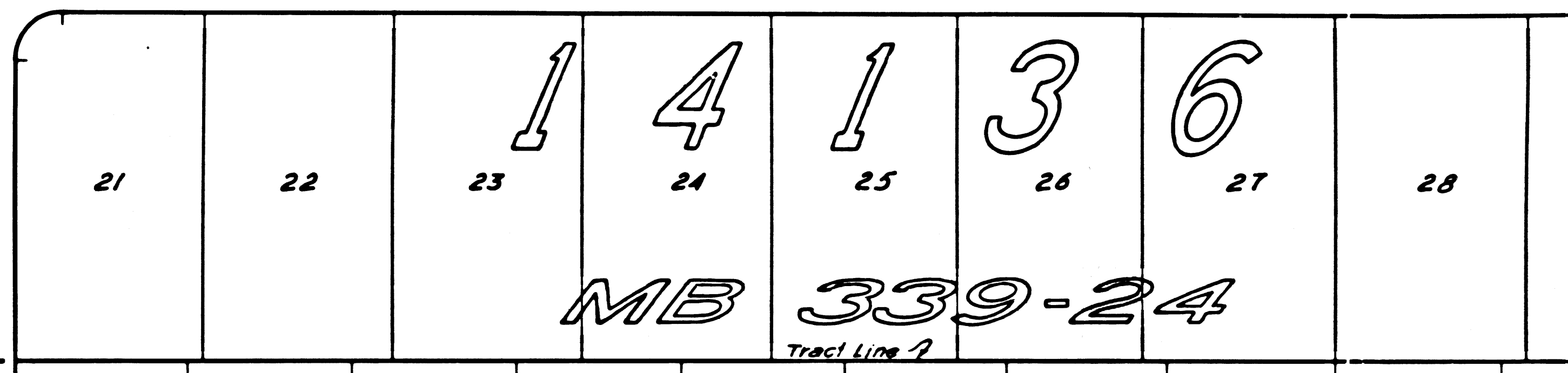
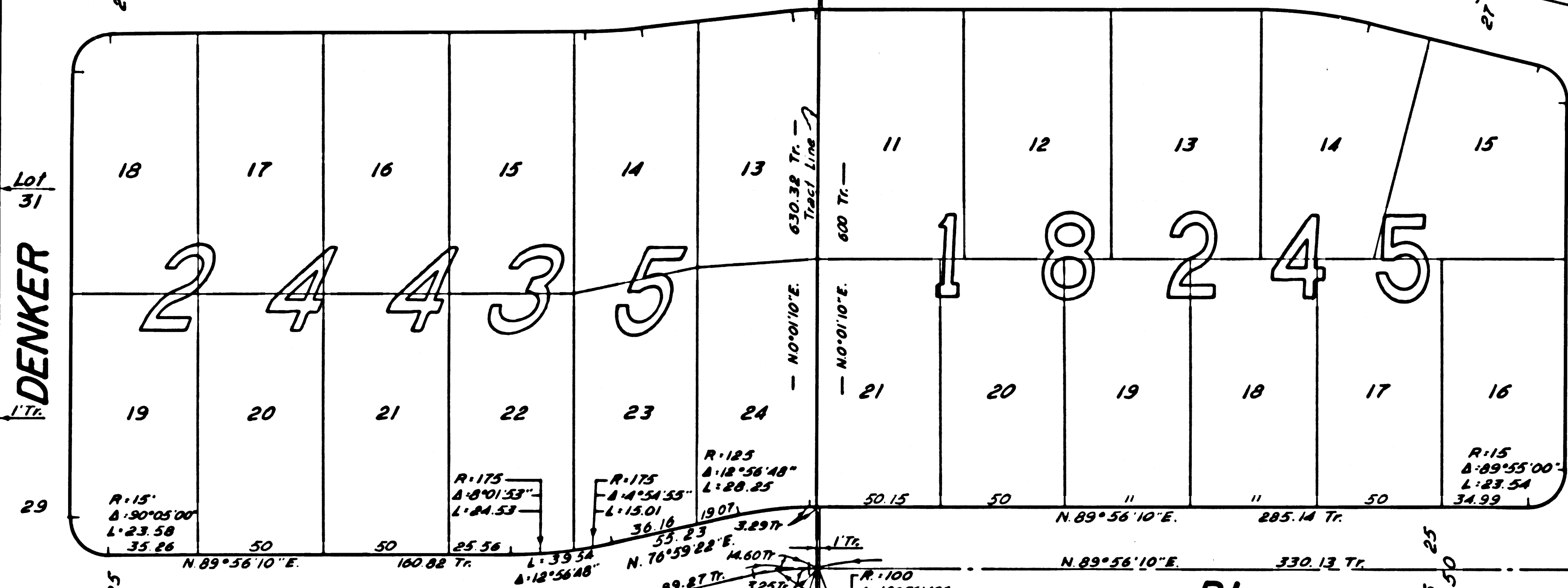
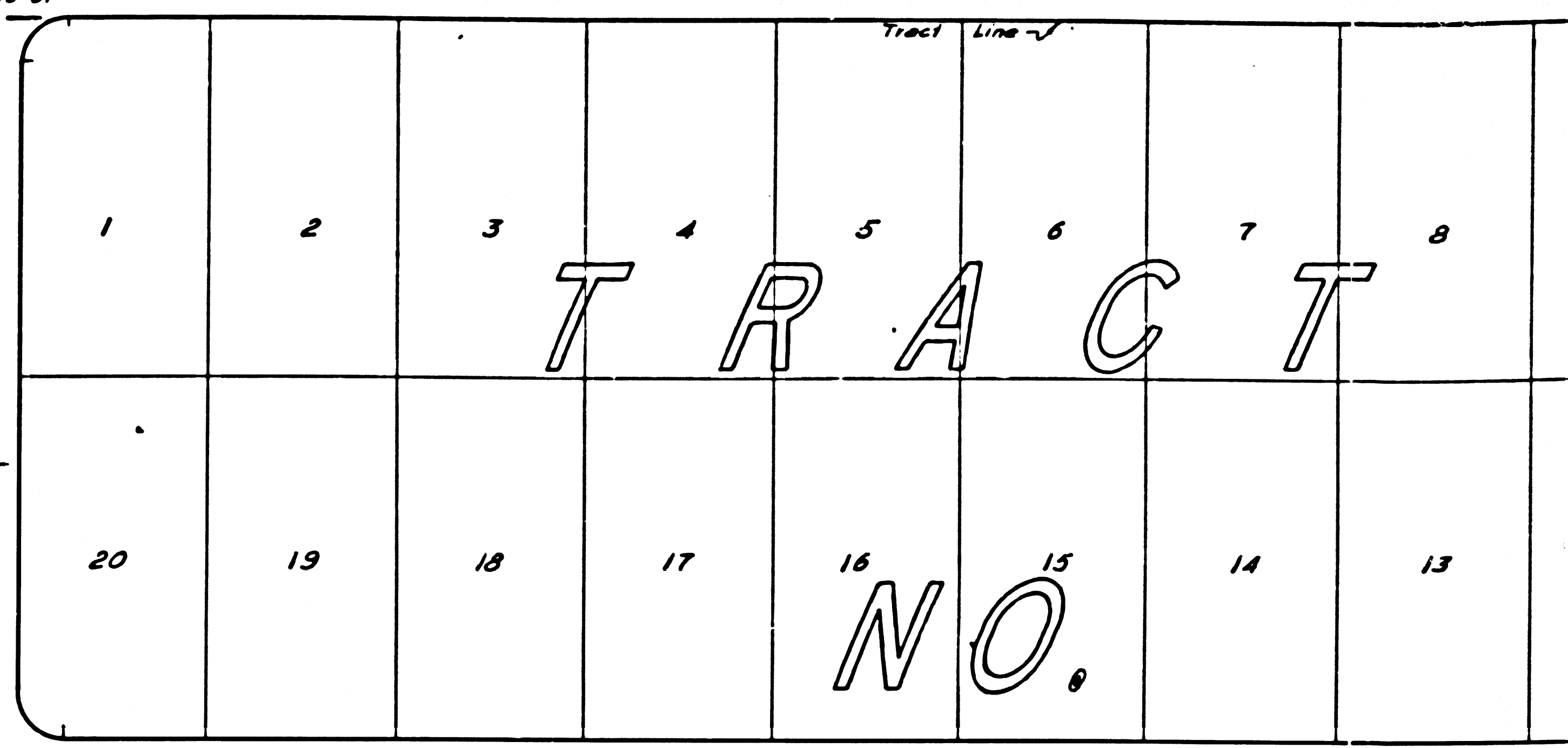
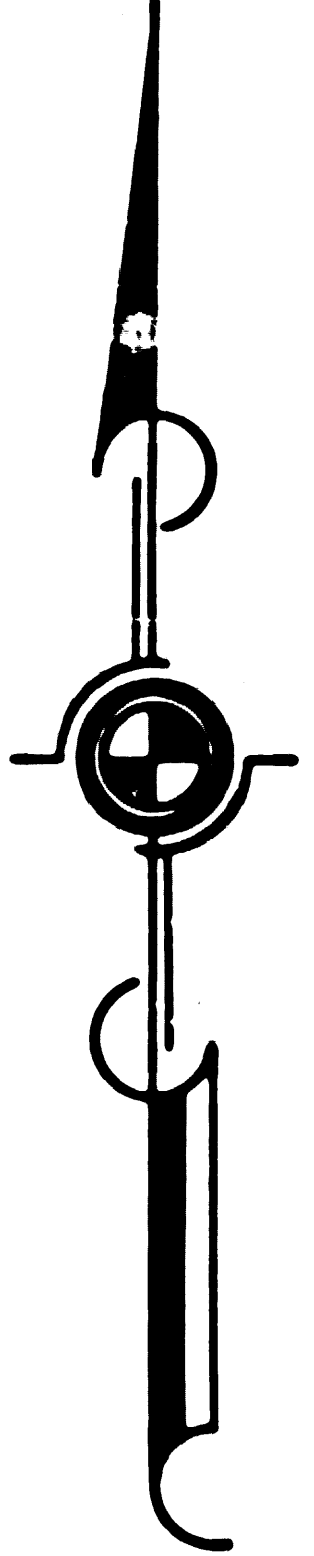
TRAC

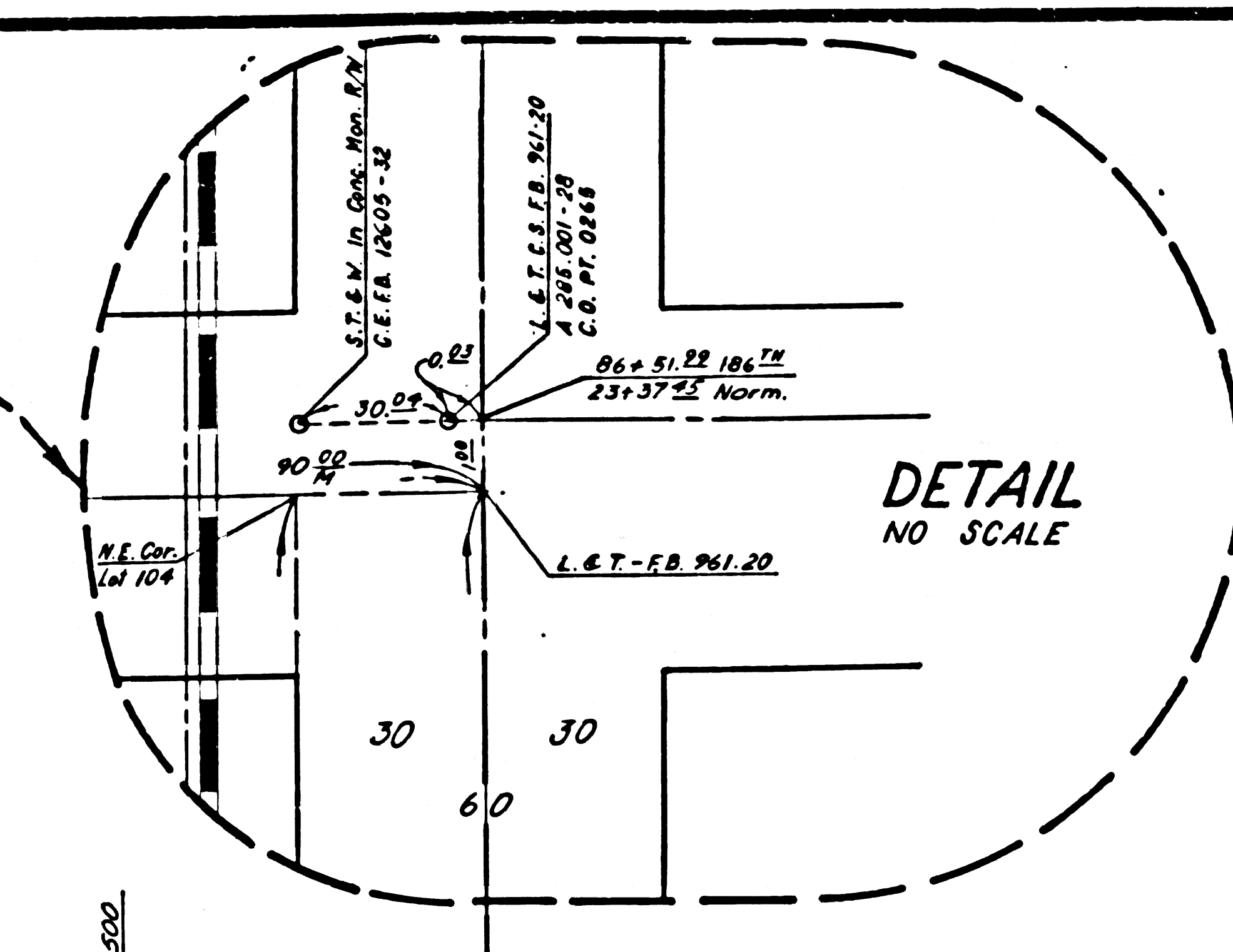
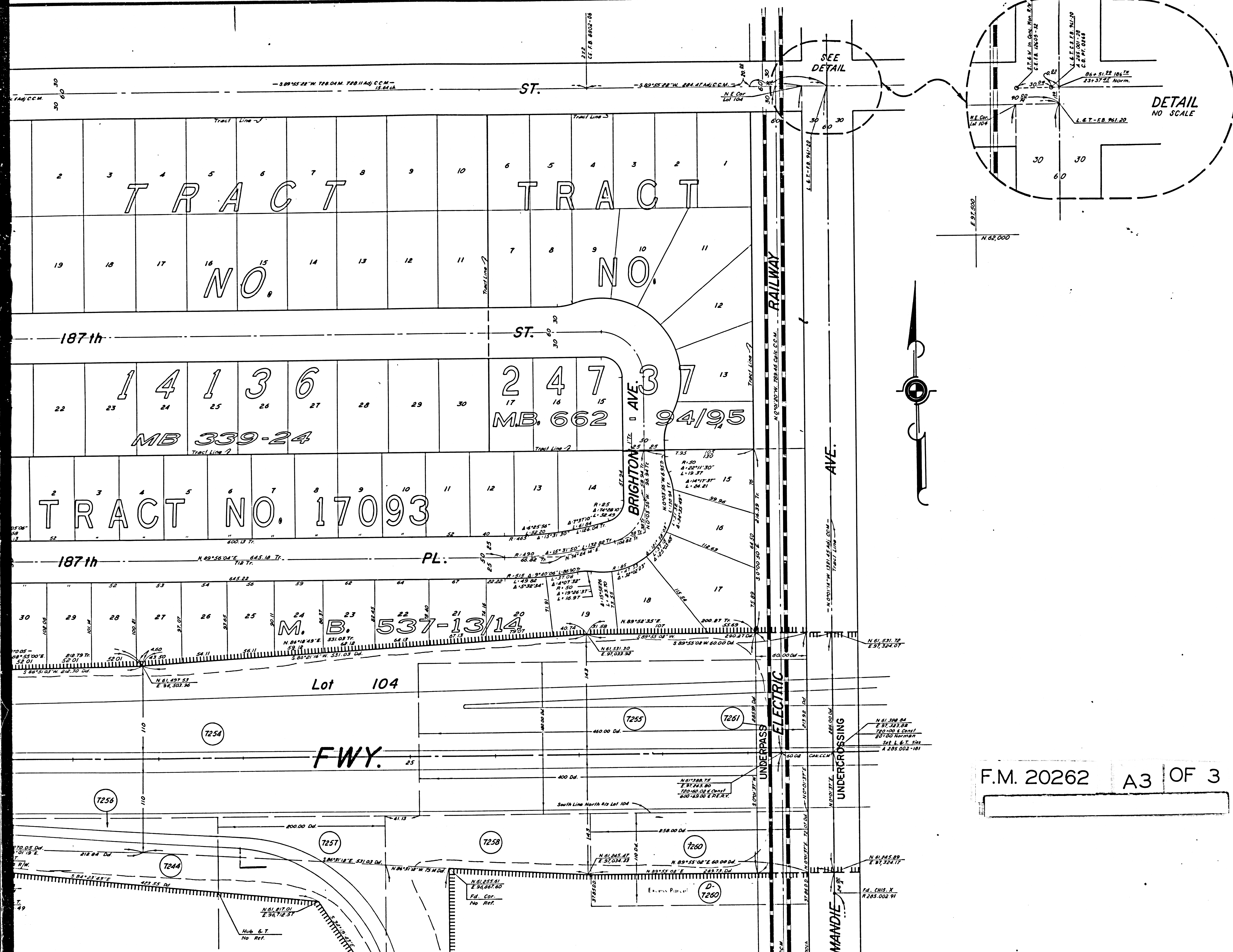
FOR CONTINUATION SEE MAP NO. F-1914



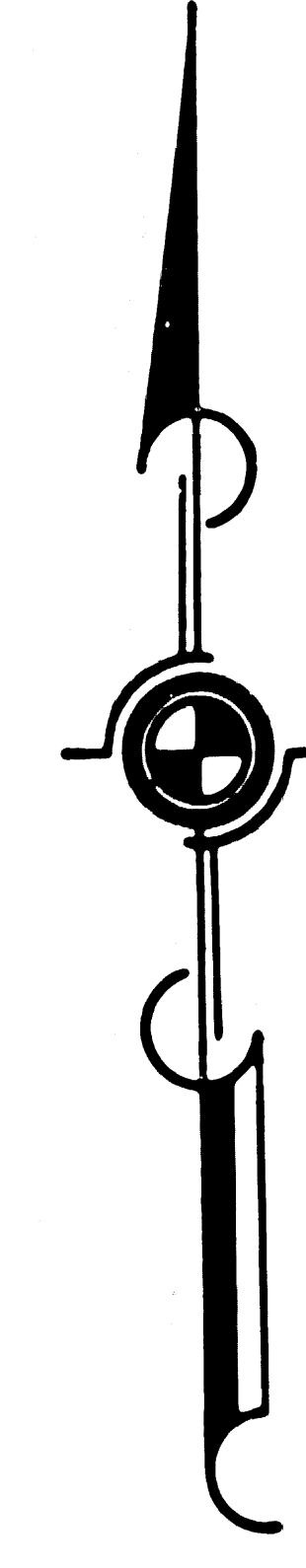
F.M. 20262 A2 OF 3

D





E 31,500  
N 62,000



F.M. 20262 A3 OF 3

FOR CONTINUATION SEE MAP NO. F-1912

FOR CONTINUATION SEE M

UNDERC

515

440

North Line South 428.34 West 1/4 Lot 86  
N 89°55'08" E 430.00' Dd.

South Line North 1/4 Lot 86  
493.00' Dd.

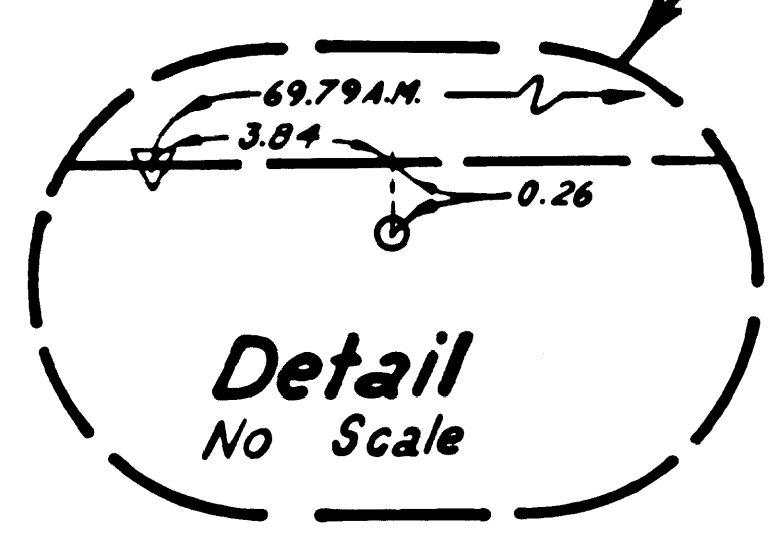
Fd. Spk. & W.  
R-285.002-93  
N 61°25'00" E 34.309' 93  
N 61°25'00" E 34.259' 93

Fd. Spk. & W.  
R-285.002-93

Fd. L.A. Co. Mon.  
R-285.002-93  
51+84.92-190<sup>TM</sup>  
P.L. SPK & W.  
Cty. 961-14

Fd. L.A. Co. Mon.  
R-285.002-93  
52+54.71-190<sup>TM</sup>  
10+00.00 West  
E & T. (Cty 961-14)  
1012-82

TORRANCE P-5  
STD. BRASS TABLET  
C.C.M. 285-7



C I T Y

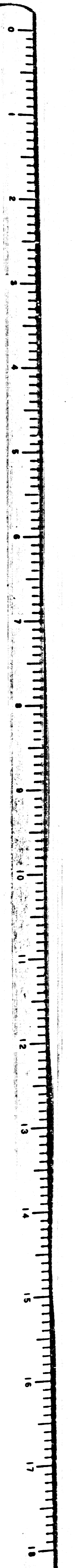
T R A C

O F

190th (Dominguez St.) S. 89°54'52" W 155.84 Adj. C.C.M. Tract Line (Victoria St.)

\* IN PAVT  
C.D. 961-13  
CONC. SPK  
C.C.M. 285-7

E. 94.002  
N 61.000

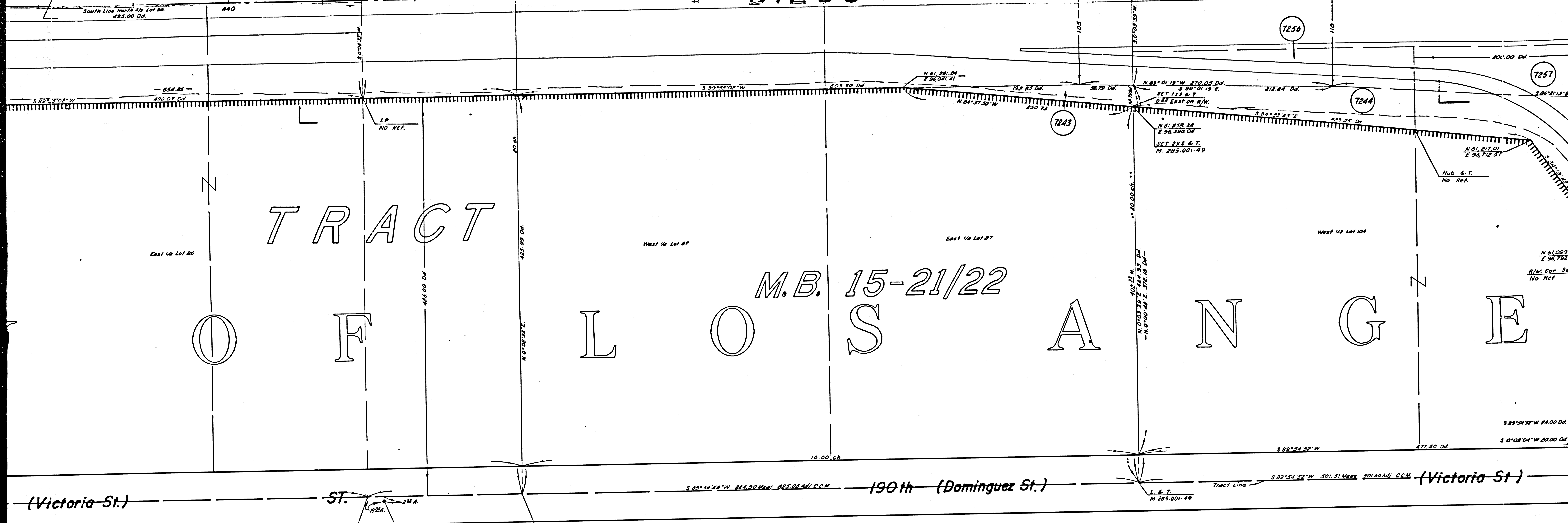


F.M. 20262 BI OF 3

- 7240 Roy J. Nakave, et al  
Fee 10-3-60  
D1087-370
- 7247 Floyd Beaver, et al  
Fee 12-8-60  
D1088-720
- 7248 Carl H. Schuck, et al  
Fee 12-16-60  
D1087-828
- 7249 Harvey Machine Co. Inc.  
Fee 2-2-55  
48543-370
- 7251 John Eurlite  
Fee 3-12-59  
D1084-24

○	Pr.	_____
○	Tr.	_____
○	S.S.	_____
○	Pr.	_____
○	Tr.	_____
○	S.S.	_____
○	Pr.	_____
○	Tr.	_____
○	S.S.	_____
○	Pr.	_____
○	Tr.	_____
○	S.S.	_____

DIEGO



TRACT  
 O F L O S A N G E

M.B. 15-21/22

(Victoria St.)

ST.

190th (Dominguez St.)

(Victoria St)

\* IN PAVT C.D. 961-13  
 CONC. SPIKE CCM. 285.7  
 Fd. Spk. & W. No reference

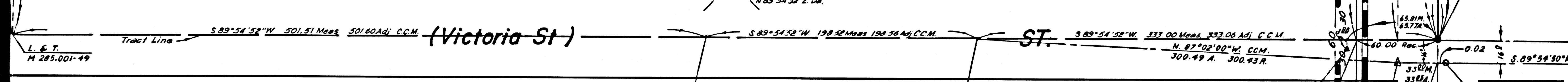
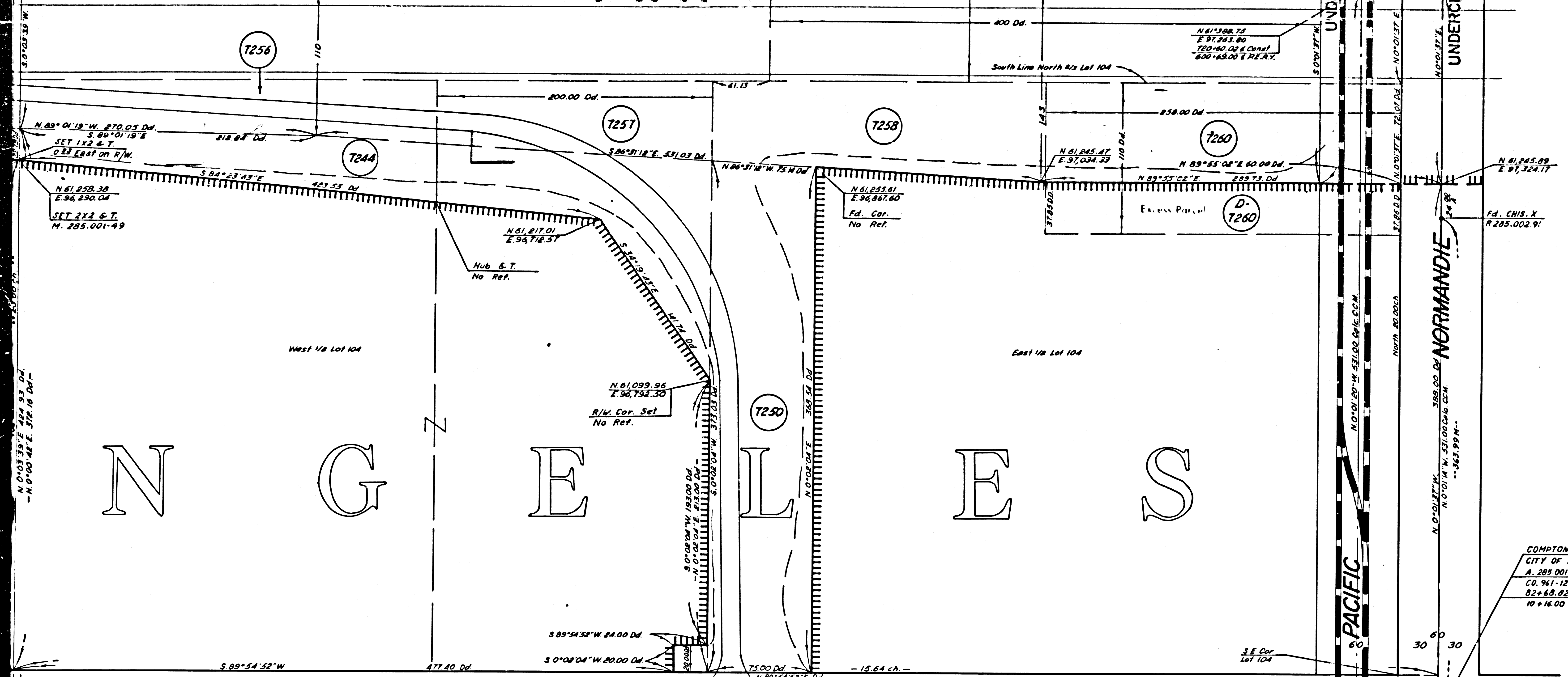
F.M. 20262 B2 OF 3

- 7240 Roy J Nakaiwa, et ux  
Fee 10-3-60  
D993-370
- 7241 Floyd Beaver, et al  
Fee 12-8-60  
D1038-790
- 7240 Carl H. Schuck, et ux  
Fee 12-16-60  
D1087-220
- 7240 Harvey Machine Co Inc  
Fee 8-3-53  
48543-376
- 7251 John Zurite  
Fee 5-12-59  
D464-24

- 7243 George M Huff, et al  
Fee 7-1-59  
D261-166
- 7244 Rodney W. Loeb, et al  
Fee 6-10-59  
D436-984
- 7240 Harry Feldman, et al  
Fee 11-22-60  
D1022-473
- 7242 Don P. Mastenello, et ux  
Fee 10-21-54  
D207-118
- 7253 George M Huff, et ux  
Fee 8-3-54  
42223-169
- 7254 Fred C. Drago, et ux  
Fee 6-23-52  
42891-432

- 7255 Edwin J. Weil  
Fee 4-11-60  
D803-952
- 7256 K.L. Loeb Jr, et al  
Fee 7-22-59  
42153-359
- 7257 K.L. Loeb Jr, et al  
Fee 5-22-54  
42650-223
- 7258 Harry Feldman, et al  
Fee 10-21-54  
43902-150
- 7260 Rosalind C. Noble, et ux  
Fee 11-8-57  
26038-321
- 7261 Pacific Electric M.W. Co  
Fee 1-3-61  
D1028-187

- 7260 Steve to M. Feldman, et al  
D.D. 1-3-61  
D1186-458



**R/W RECORD MAP**  
 NOT TO BE TAKEN  
 FROM DISTRICT OFFICE

COORDINATES SHOWN ARE FOR INTERNAL  
 USE OF THE DIVISION OF HIGHWAYS AND  
 ARE TO BE USED FOR REFERENCE ONLY

STATE OF CALIFORNIA  
 HIGHWAY TRANSPORTATION AGENCY  
 DEPARTMENT OF PUBLIC WORKS  
 DIVISION OF HIGHWAYS

ROAD: VII-LA-158 (405)  
**RIGHT OF WAY MAP**

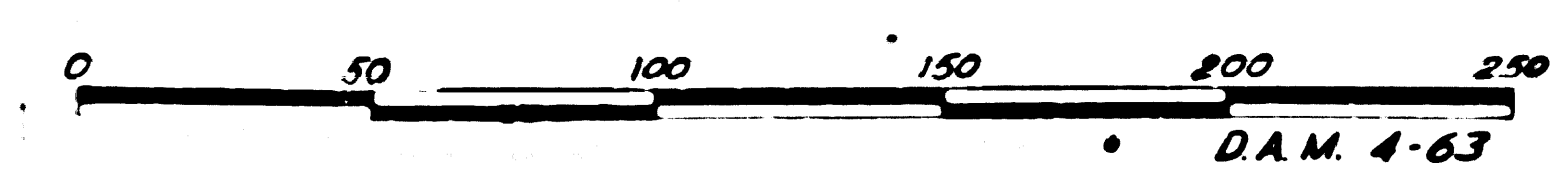
FROM NORMANDIE AVE.  
 TO WESTERN AVE.

- 7254 Edwin J. Weir  
 Fee 11-60  
 D.B. 809-952
- 7255 K.L. Loeb Jr. et al  
 Fee 7-22-54  
 D.B. 4153-359
- 7257 K.L. Loeb Jr. et al  
 Fee 9-22-54  
 D.B. 4160-203
- 7258 Harry Feldman et al  
 Fee 10-21-54  
 D.B. 43902-150
- 7260 Rosalind C. Noble et al  
 Fee 11-8-57  
 D.B. 58036-321
- 7261 Pacific Electric R.W. Co.  
 Fee 1-3-61  
 D.B. 71083-187

- 7260 State to H. Feldman et al  
 D.O. 1-3-61  
 D.B. 21182-493

F.M. 20262 B.3 OF 3

Basis of bearing for this map & R/W  
 at Normandie Ave. N. 0° 01' 37" E.  
 Monumentation taken from "A" notes & C.C.M.  
 285.7-Rev. 2/63



F-1913