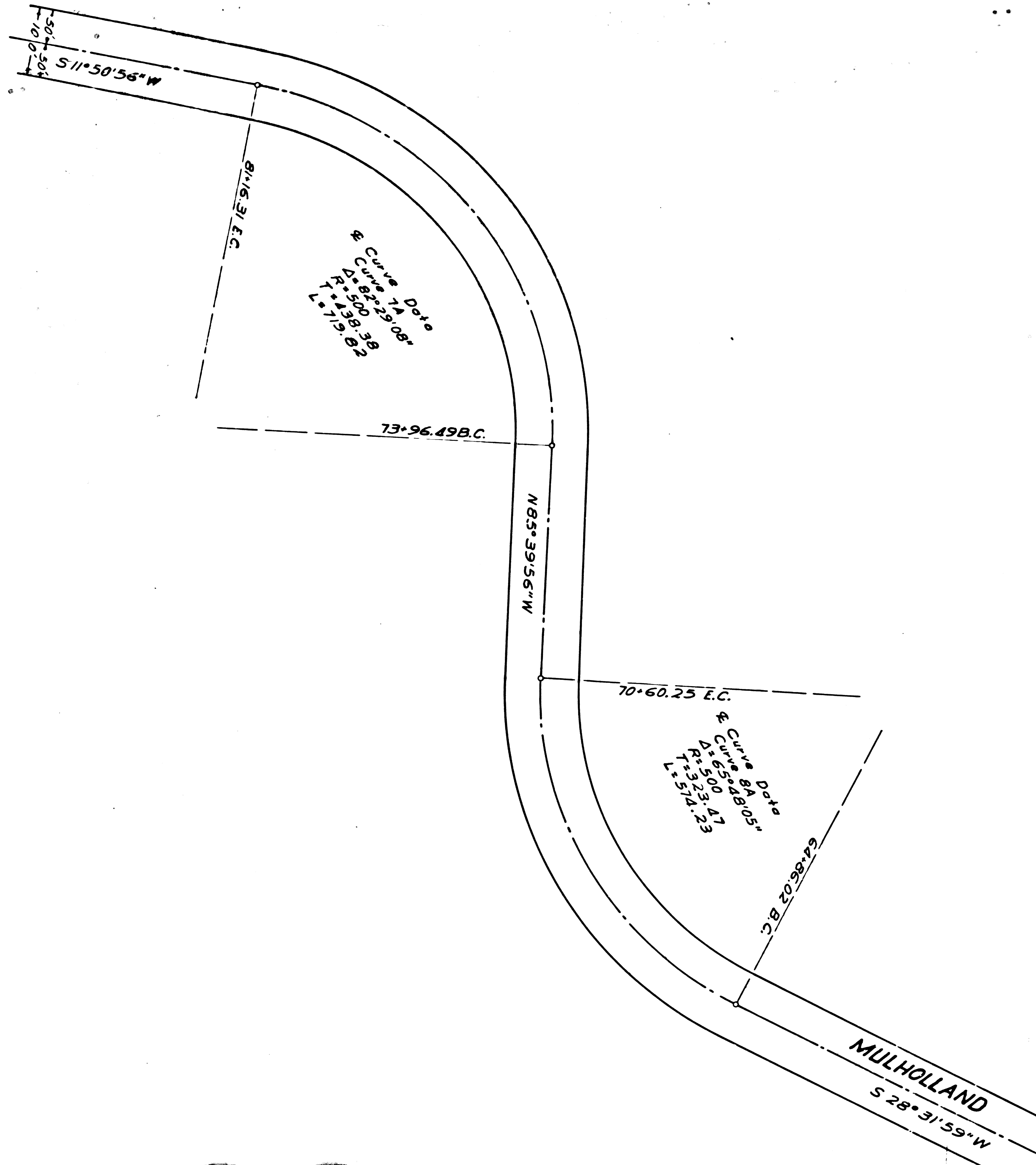


See Sheet 4 of 4

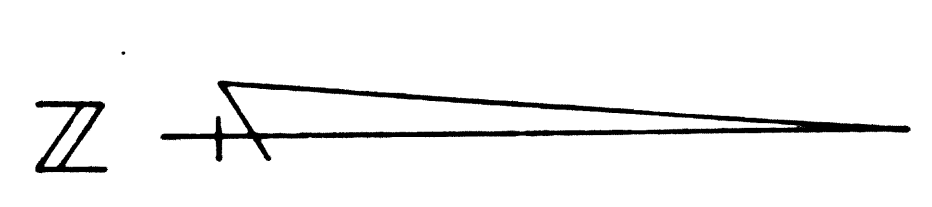


Curve Data
 Curve No. 8
 D = 500.00
 R = 157.08
 L = 171.99

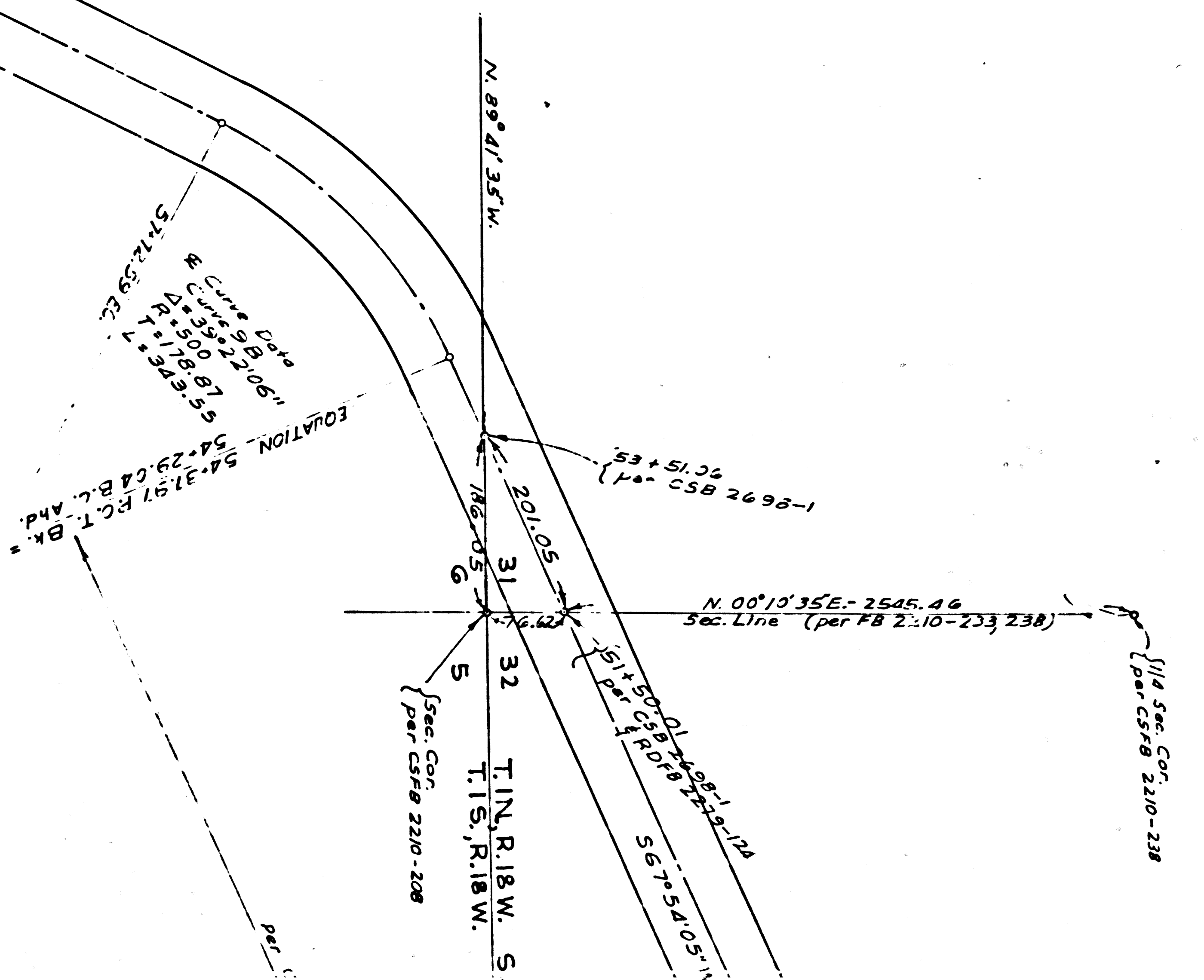
Curve Data
 Curve No. 9
 D = 500.00
 R = 157.08
 L = 171.99

Curve Data
 Curve No. 10
 D = 500.00
 R = 157.08
 L = 171.99

MULHOLLAND
 M. 65.12 + 82.5



F.M. 20265 -3
 A1 OF 3



TIN R. 18 W. S. 32
 T. 1 S. R. 18 W. S. 31
 (Sec. Cor'd 2210-208)

N 00° 13' 35\"/>
 Sec. Line (per FB 2:10-233 238)

1/4 Sec. Cor'd
 (per 55' 8 2210-218)

1-8692 SSC
 2C15 + 85
 (per CSB 2698-1)

2010.55
 182.05

N 89° 11' 35\"/>
 2010.55

567-540-5
 151 x 50 x 0.1-881-124

part 1

116 Sec. Cor. 210-218
 (Per. C.F. 220-208)

S1+307.54
 Par. C.F. 220-208
 S1+51.54
 S1+51.05-W

32 TIN, R. 18 W. SAN BERNARDINO BASE LINE
 5
 (Sta. Cor. Per. C.F. 220-208)

SEMINOLE

40.67' O.E.C.

E Curve Data
 Δ = 47° 30' 02"
 R = 2000
 T = 666.03
 L = 658.08

E Curve Data
 Δ = 47° 30' 02"
 R = 2000
 T = 666.03
 L = 658.08

Rancho Las Virreyes
 (Per. 33-95 (7R 2804))

PI #108
 Sta. 1+826.98
 (Per. 33-95 (7R 2804))

ST. Line Rancho Las Virreyes
 Sta. 1+826.98-1

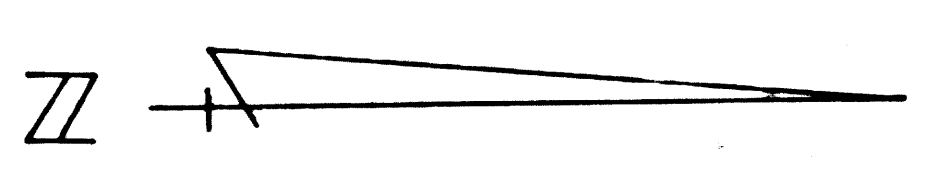
EQUATION 2d + 08.93 P.O.C. Abd.
 25 + 25.91 B.C. BK

PI #25
 (Per. 33-95 (7R 2804))
 Sta. 1+954.1

TRUNFO CANYON
 N 32° 02' 21" W
 257.22'

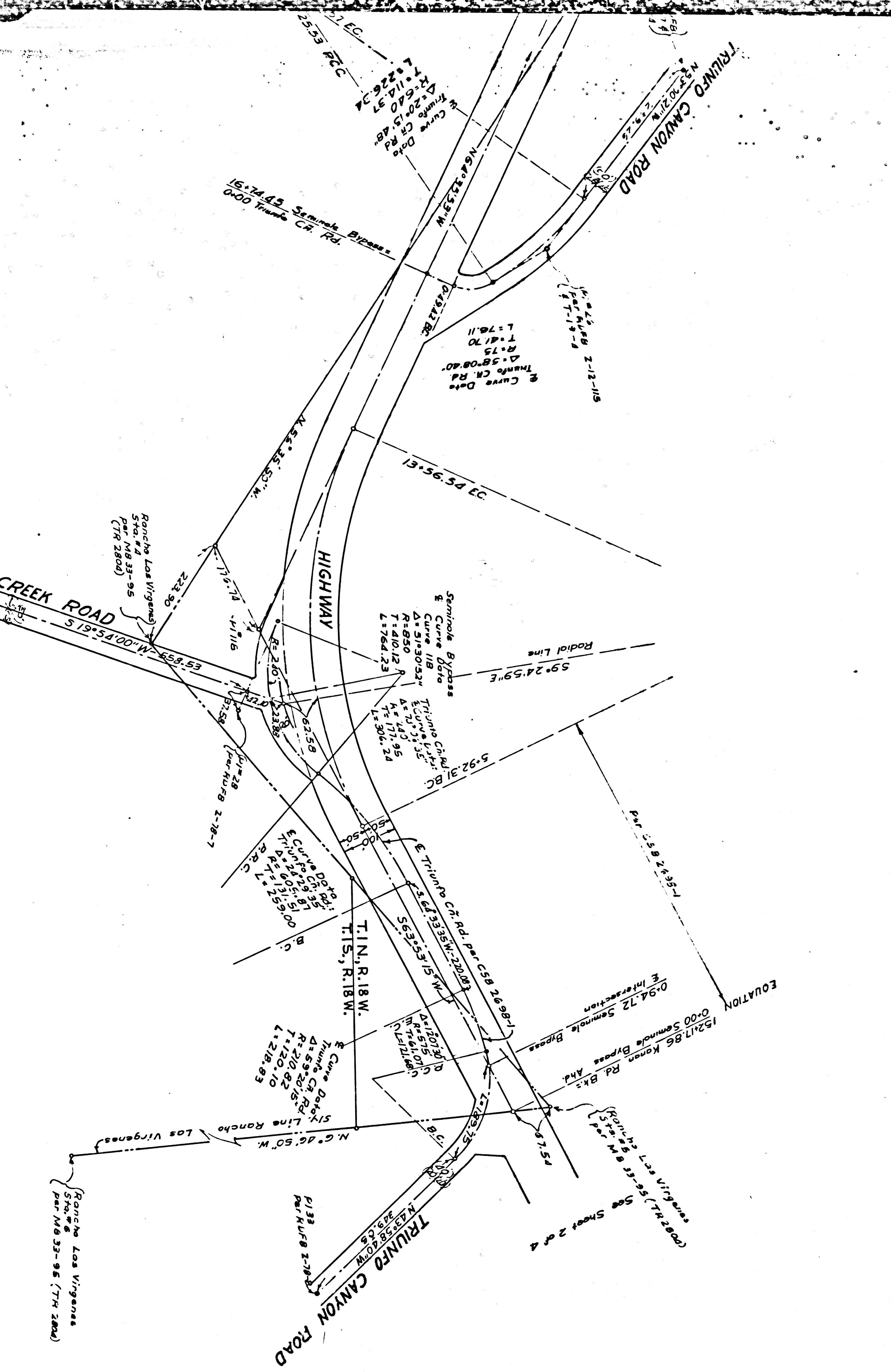
W Curve Data
 Δ = 114° 40' 34"
 R = 226.34
 T = 114.97
 L = 226.34

S1+217.07 EC.
 1755.53 P.O.C.



F.M. 20265 -3

A2 OF 3



F.M. 20265 -3
 A3 OF 3

References:
 Map 1, CSB 2698-1
 2, FM 11239 (T-1-4-4)
 Field books:
 1, W&B 33-95 (TR 2800)
 2, CSFB 2279, 2210
 3, RDMB 2-76-7, 2-12-115

Revisions:
 1, T.Tes: W.Gruob 4/19/64

NOTE: Sheets 1&2 KANAN ROAD
 SHEET 3&4 MILLWOLLAND-
 SEMINOLE BYPASS HIGHWAY
 5. 63°53'15"W, CSB 2698-1

DATE	BY	DATE	BY
DESIGNED BY	W. G. GUY	CHECKED BY	W. G. GUY
APPROVED BY	W. G. GUY	DATE	
FILE NUMBER	LOS ANGELES COUNTY ROAD DEPT.		
SCALE	1" = 40'		

Sheet 3 of 4
 Millwolland-Seminole Bypass Hwy.-Albu. Map