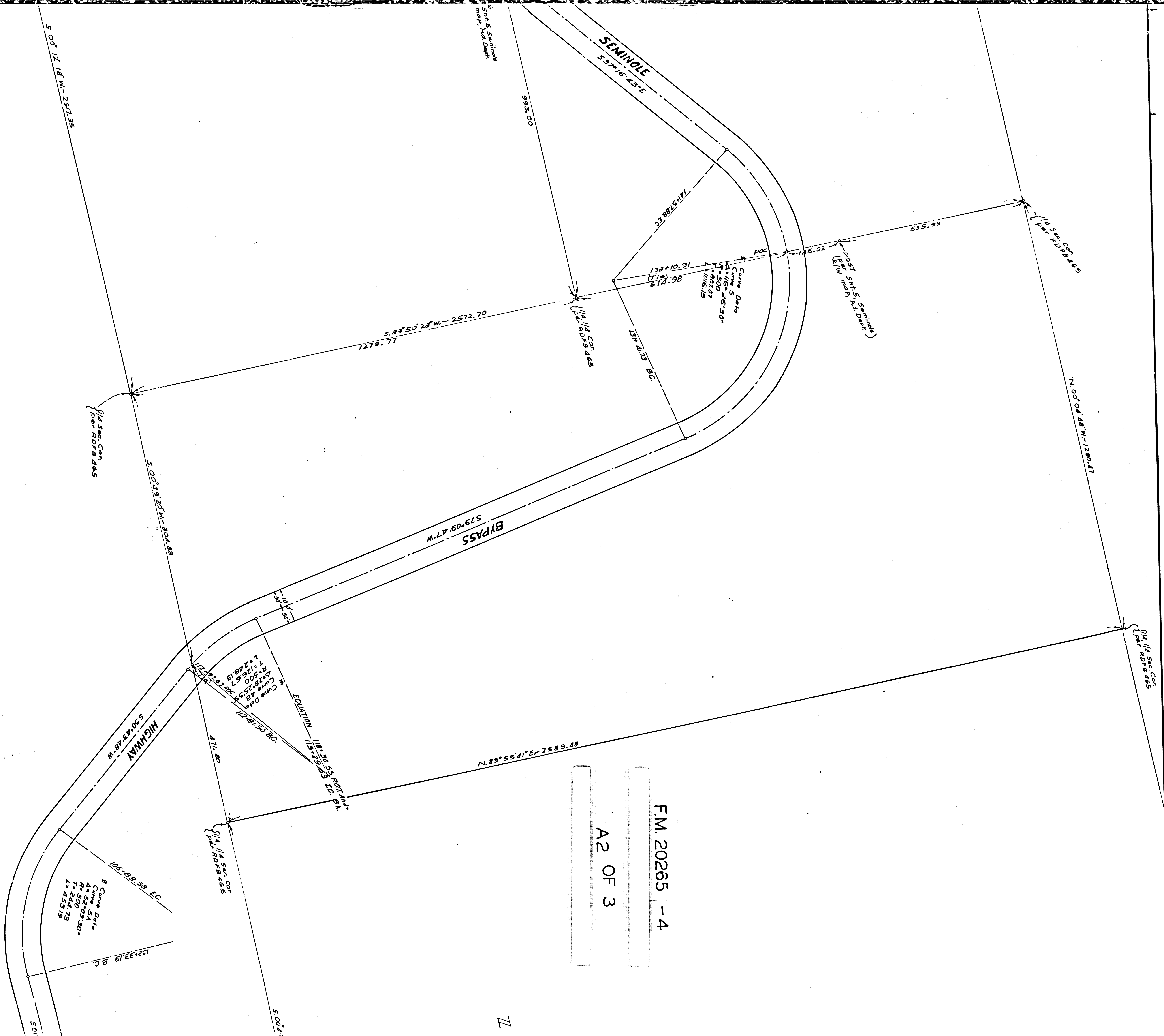


F.M. 20265 -4

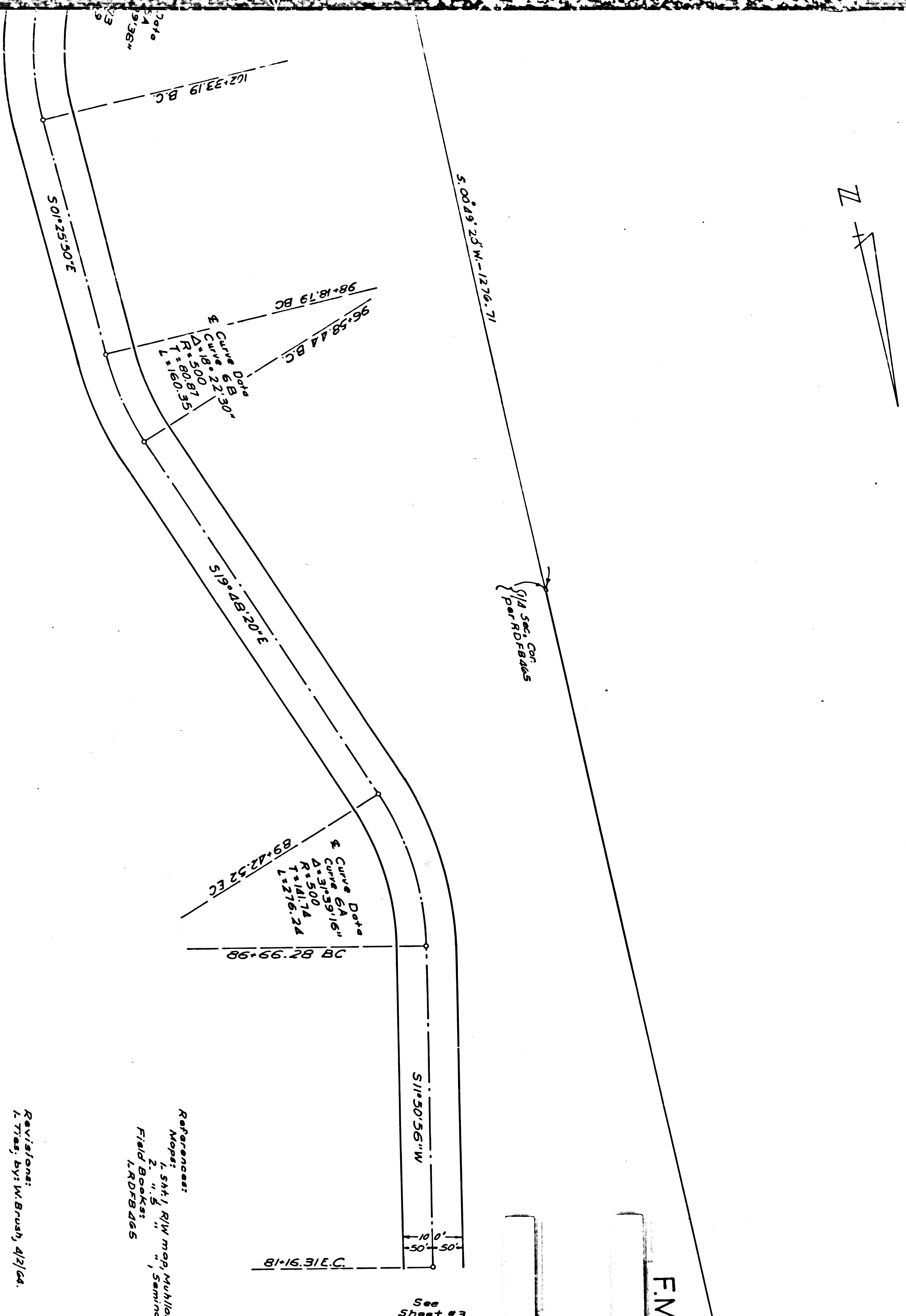
11 OF 31



Sheet 4 of 4
Mulholland-Seminole Bypass Hwy - Align. Map

F.M. 20265 -4

A3 OF 3



See
Sheet #3

References:

Mops:
1. Sht. I R/W map, Muhlond Rd Dept
2. " " " Seminoe, " "

Field Books:
1. RDFS B465

Revisions:
1. Times; by: W. Brush, 4/2/64

NOTE:
Sheets 1-63 KAMAY ROAD
SHEETS 3-64 MULHOLLAND-
SEMINOLE BYPASS HIGHWAY
Base of B bearing: S 79°09'43"W, SH 4.
R/W map, Seminole

ALIGNMENT MAP

KAMAY ROAD, MULHOLLAND-
SEMINOLE BYPASS HIGHWAY

LOS ANGELES COUNTY ROAD DEPT.

HILLS ENGINEERING DIVISION

DRAWN BY	CHECKED BY	DATE COMPLETED BY	DATL
J. HARRISON	J. HARRISON	11/18/68	DALE
RECORDING NO. BT	FILED NO. BT	DATE FILED	
11-11-68	11-11-68	11-11-68	
SHEET 4 OF 4 SHEETS			