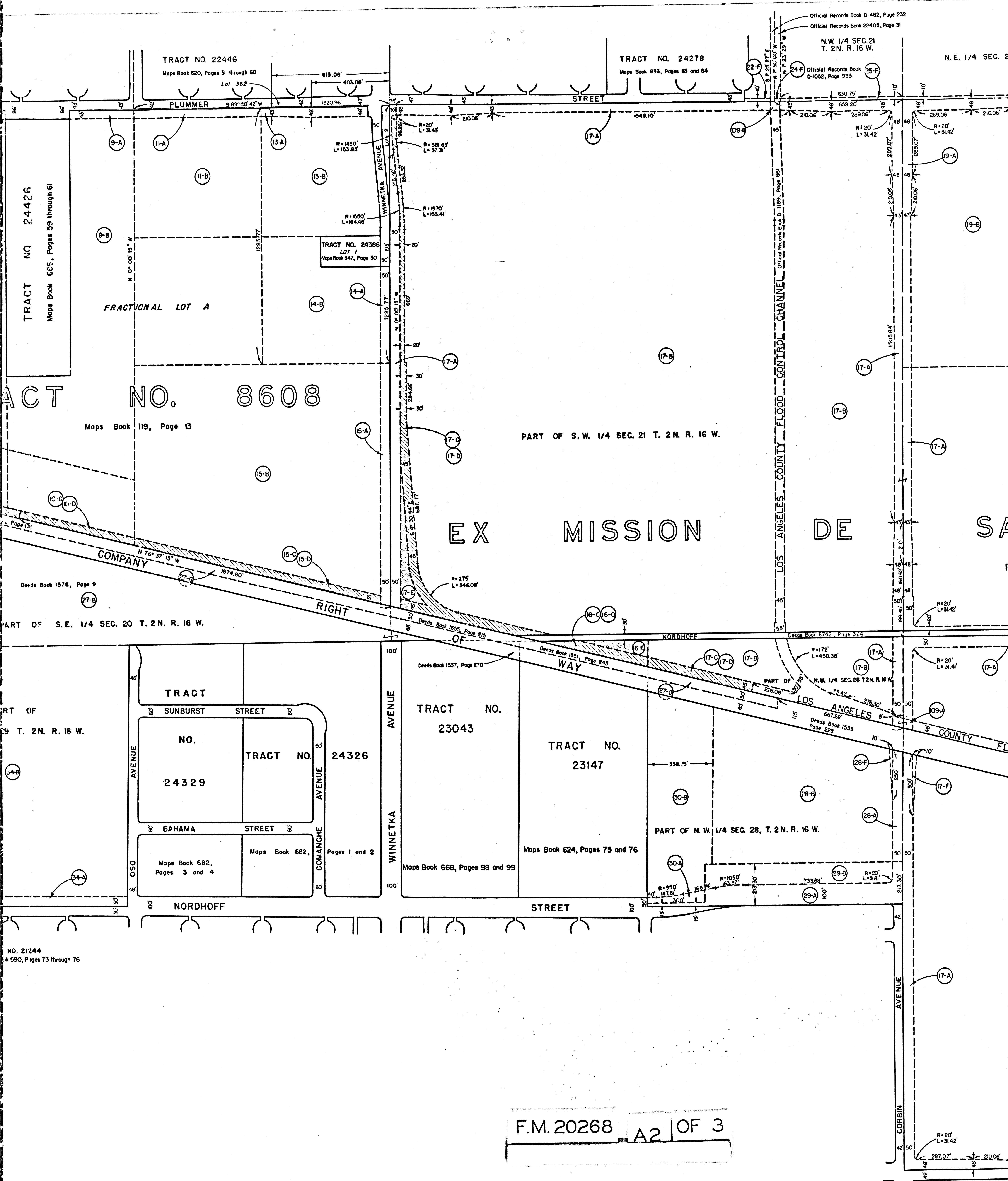


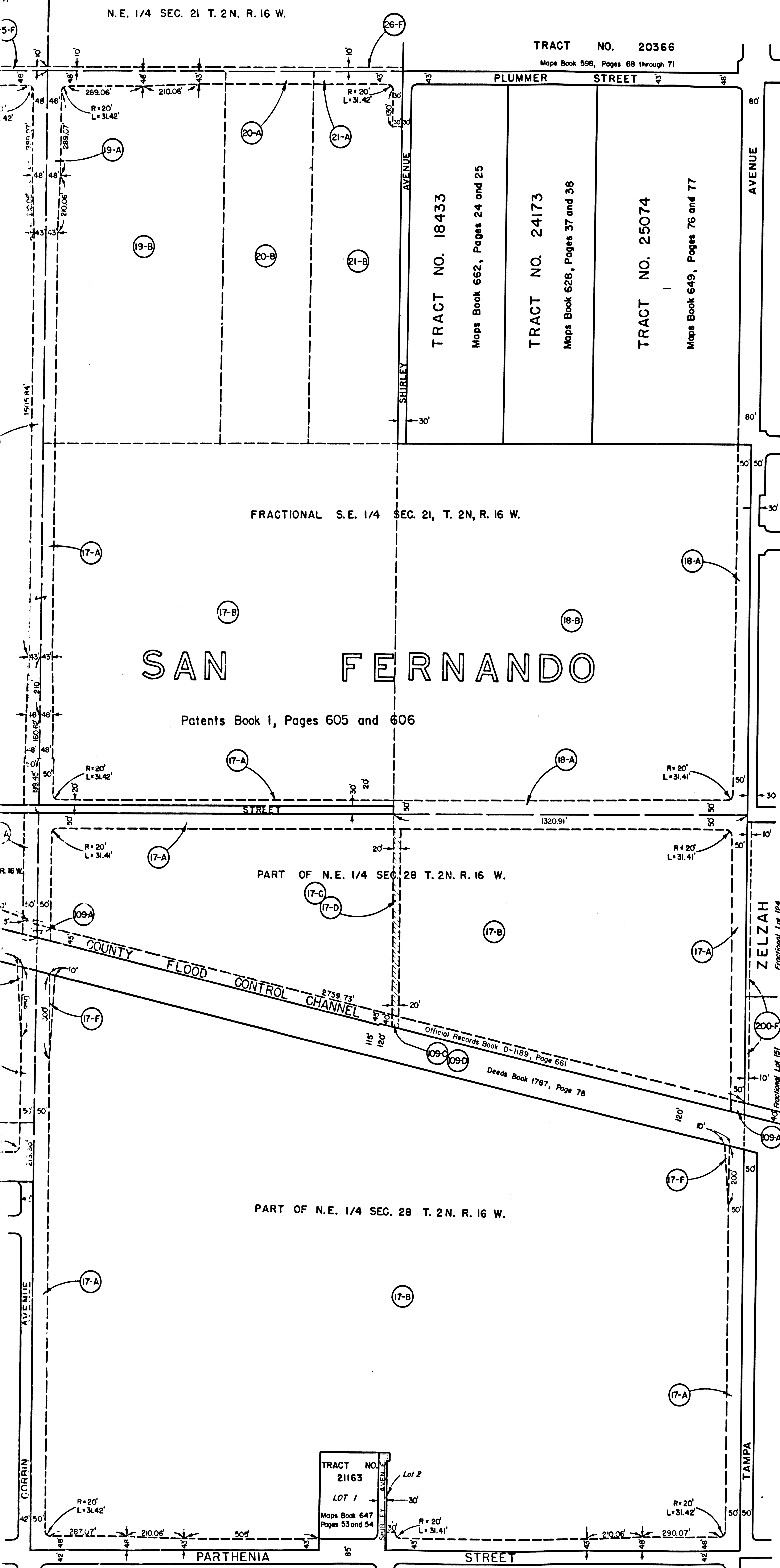
F.M. 20268 A1 OF 3



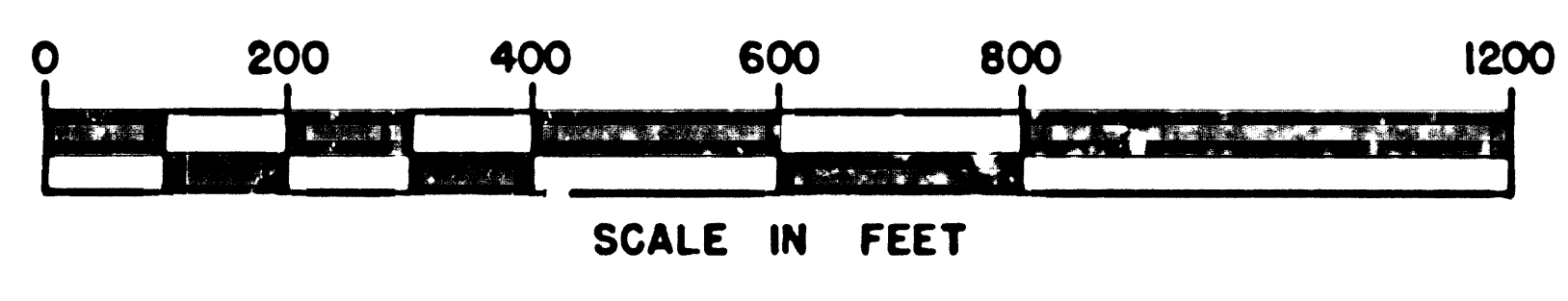
F.M. 20268 A2 OF 3

NO. 21244
k. 590, Pages 73 through 76

482, Page 232
1405, Page 31



MAP
SHOWING REAL PROPERTIES
OVER WHICH CERTAIN EASEMENTS AND RIGHTS
ARE TO BE ACQUIRED
IN CONNECTION WITH THE
NORDHOFF STREET
AND
WINNETKA AVENUE
IMPROVEMENT PROJECT
IN THE CITY OF LOS ANGELES, CALIFORNIA
IN ACCORDANCE WITH ORDINANCE NO. 123932
LYALL A. PARDEE, CITY ENGINEER



- NOTES:**
1. Properties over which easements are to be acquired for Public Street purposes are shown colored red.
 2. Properties over which easements are to be acquired for Storm Drain purposes are shown colored orange.
 3. Properties over which easements are to be acquired for Sanitary Sewer purposes are shown thus:
 4. Properties over which easements are to be acquired for Construction purposes are shown thus:
 5. Properties over which temporary easements are to be acquired for Slope purposes are shown colored green.
 6. Properties over which temporary easements are to be acquired for Construction purposes are shown colored blue.
 7. Properties to which it is proposed to ascertain damages, if any, are shown outlined in yellow.
 8. Numbers and letters in circles refer to the parcels set forth in the complaint.

F.M. 20268 A3 OF 3

Title <u>Nordhoff Street and Winnetka Avenue I, D.</u>	
Right of Way No. <u>25290-24547</u>	
Order No. <u>71259</u>	Dist. Maps <u>7287, 7296, 7299, 7337, 7338, 7346, 7347</u> Div Index <u>603, 604, 701, 702</u>
Clerk's File <u> </u>	Council Dist. <u>3</u> Engr. Dist. <u>W. Valley</u>
Plans & Profiles <u>P-21115</u>	Field Books <u> </u>
Office Work <u>Tracy</u>	Ckd. <u> </u> Supervised by <u>H.N. Pardee</u>
Submitted <u>Feb. 20</u>	1963 Division Engr. <u> </u>
Approved <u>Feb. 20</u>	1963 City Engr. <u>Lyall A. Pardee</u>

M-472

M-472