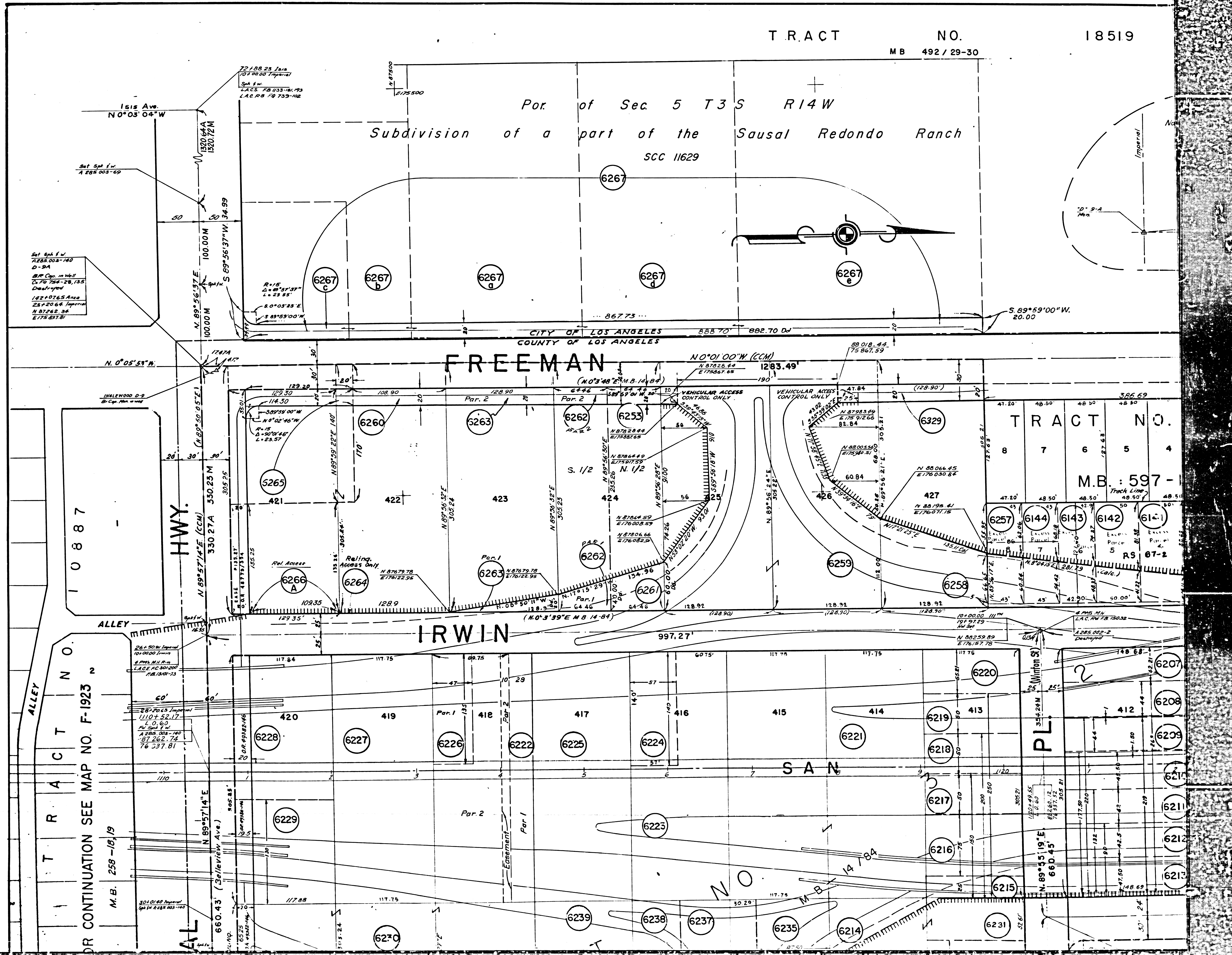


VENCO
PROFESSIONAL

10TH 957

TRACT NO. 18519
MB 492 / 29-30

Por. of Sec 5 T3S R14W
Subdivision of a part of the Sausal Redondo Ranch
SCC 11629



Set 5th 1/4
A285 008-140
D-2A
8th Cop. in 1467
D-76 754-28, 135
Dist. 1/4
18210765 Area
2812066 Imperial
N 87°26' 34
E 77°07' 11

R=15
Δ=49°57'37"
L=23.85'

S 89°59'00"W
L=23.85'

HWY.
N 89°57'14"E (CCM)
330.27A 330.23 M
N 0°05'53"N

TRACT NO. 10887
ALLEY
N 89°57'14"E (CCM)
330.27A 330.23 M
M.B. 258-181/9
660.43' (3rd/1st View Ave.)
N 89°57'14"E

F.M. 20274

AI OF 3

OR CONTINUATION SEE MAP NO. F-1923 N

TRACT NO. 87654
M.B.: 597-1

PL 2

PL 2

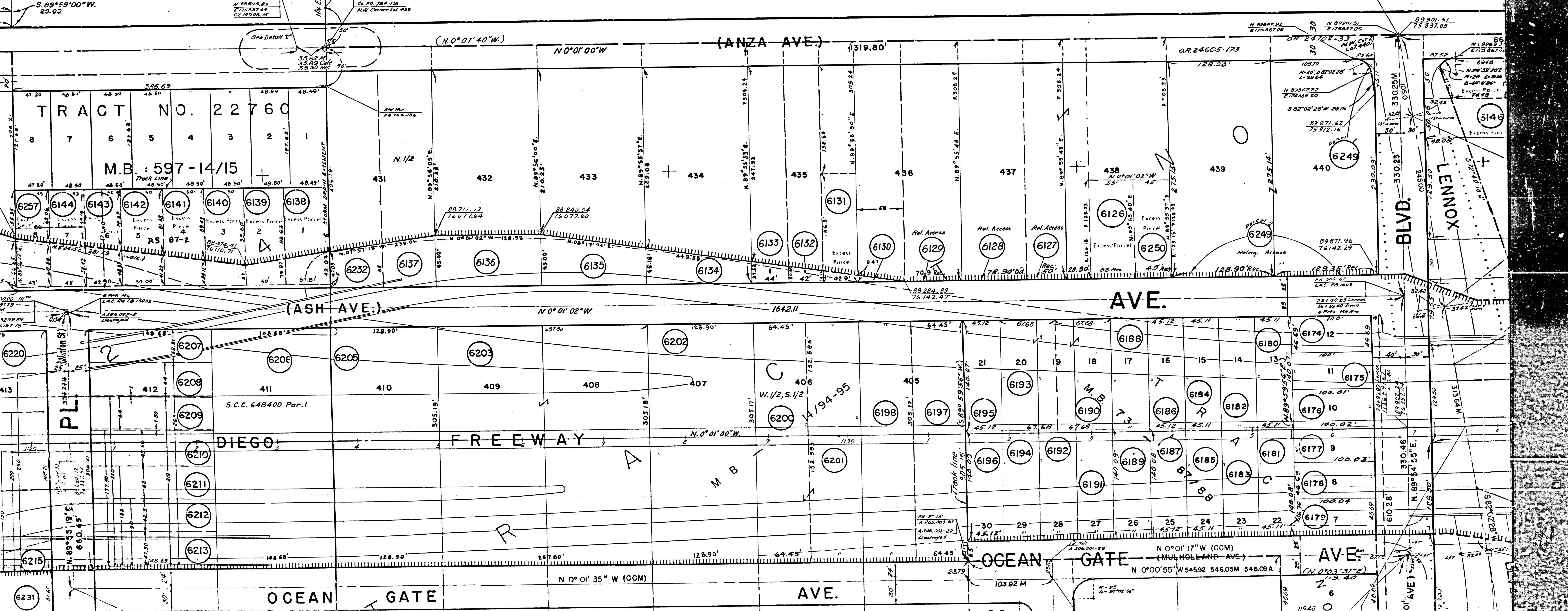
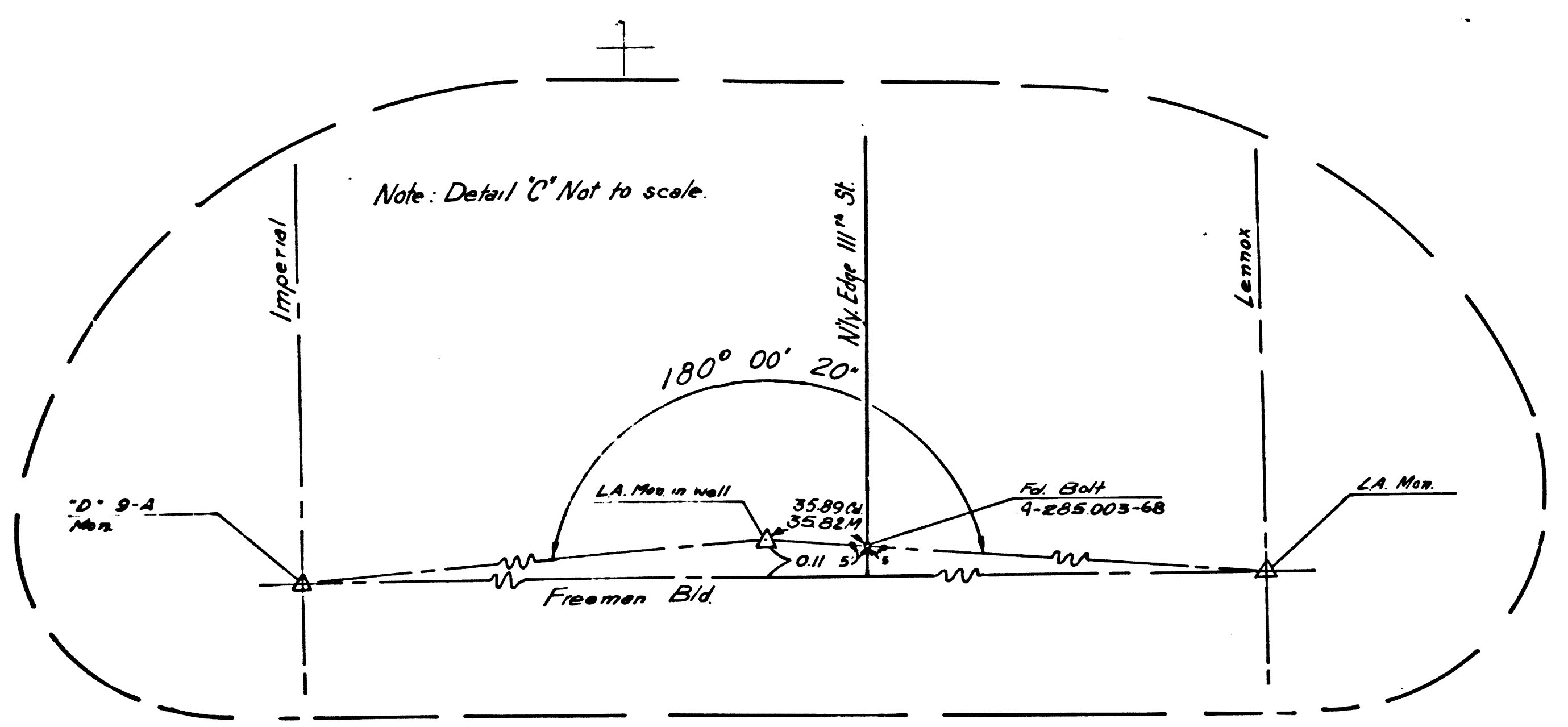
PL 2

PL 2

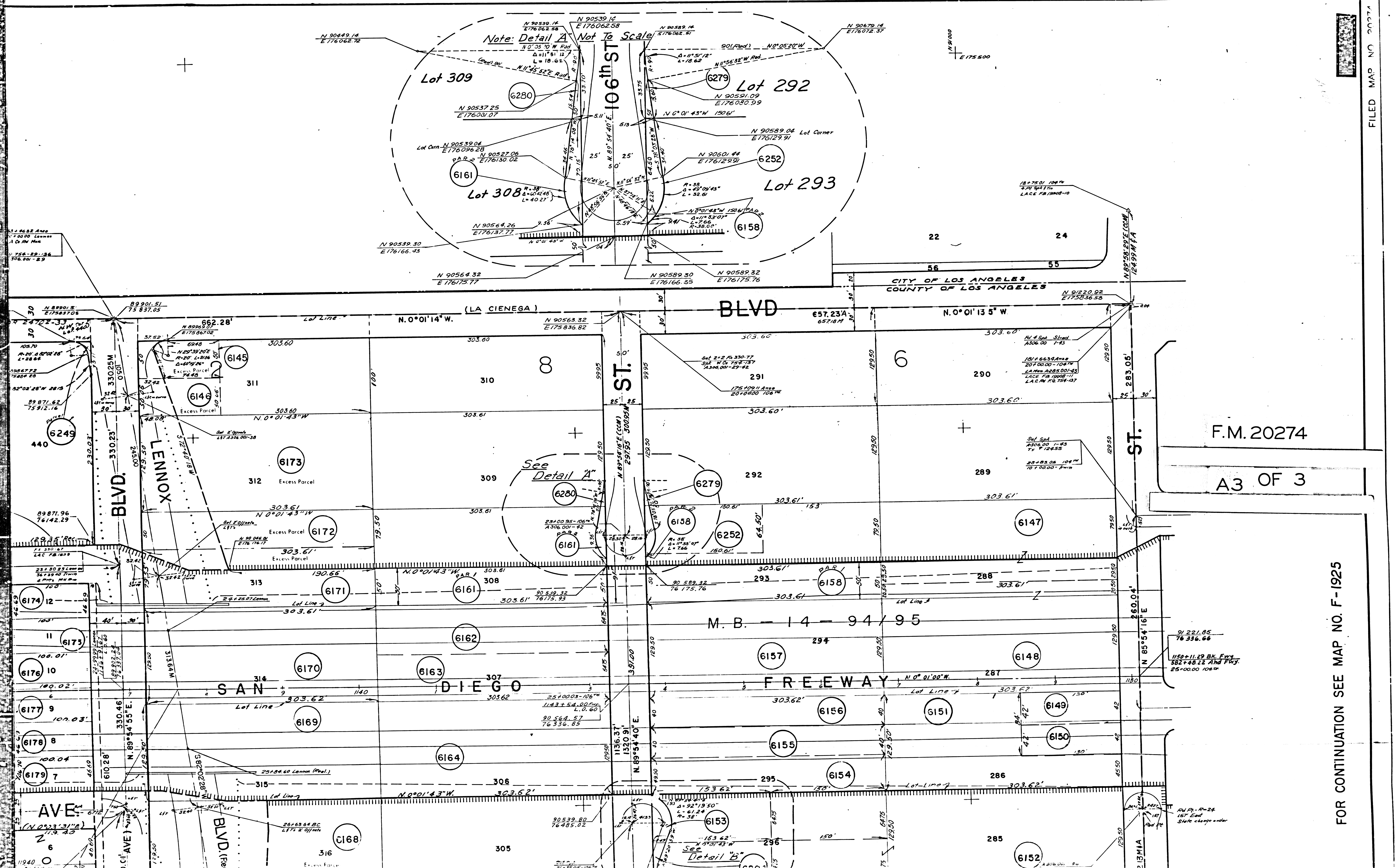
18519

F.M. 20274

A2 OF 3

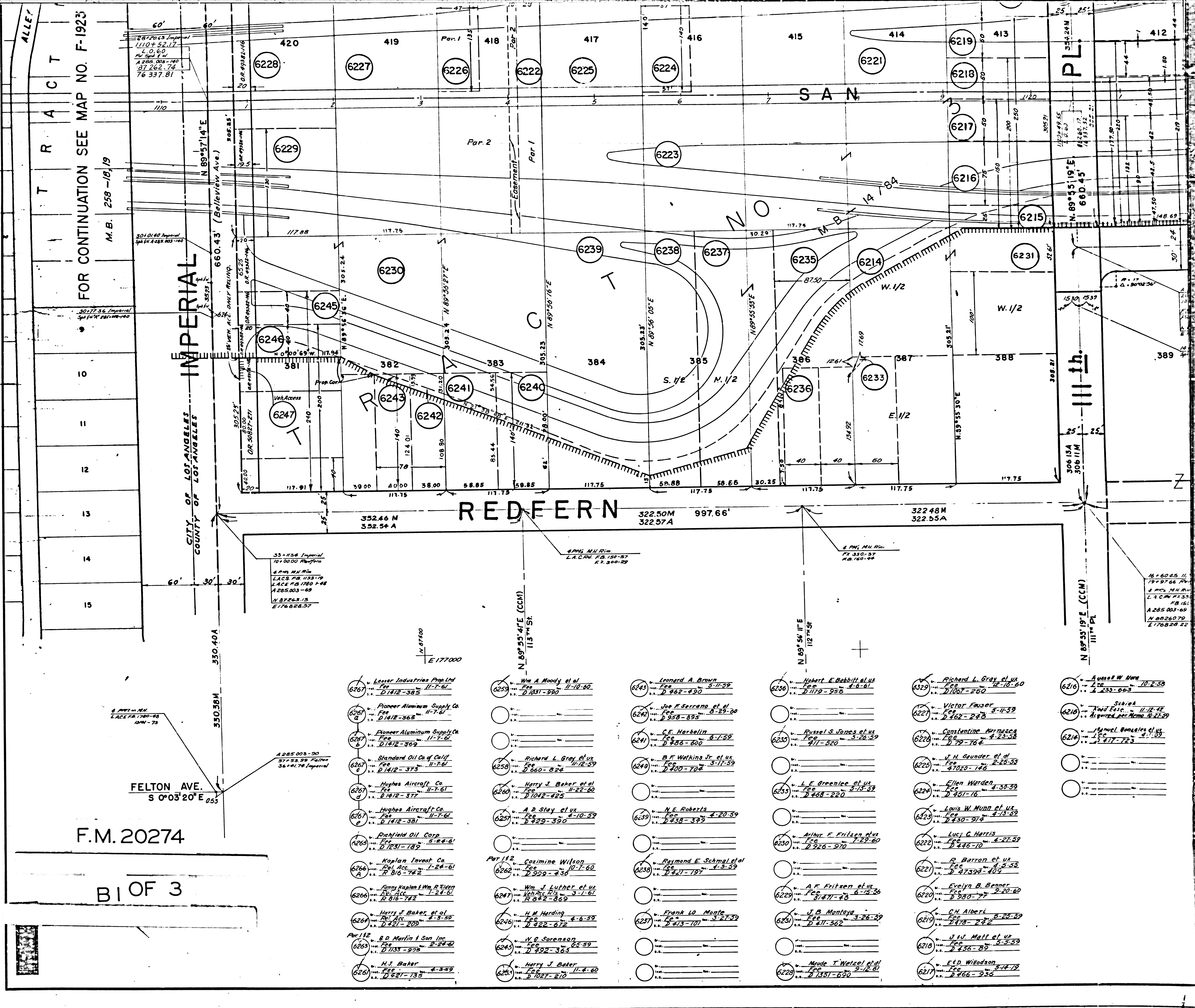


100 + 46.82 Area
33 + 60.00 Lennox
L.A. City Map
FD 756-29-136
A 306.00' - 29'



FOR CONTINUATION SEE MAP NO. F-1925

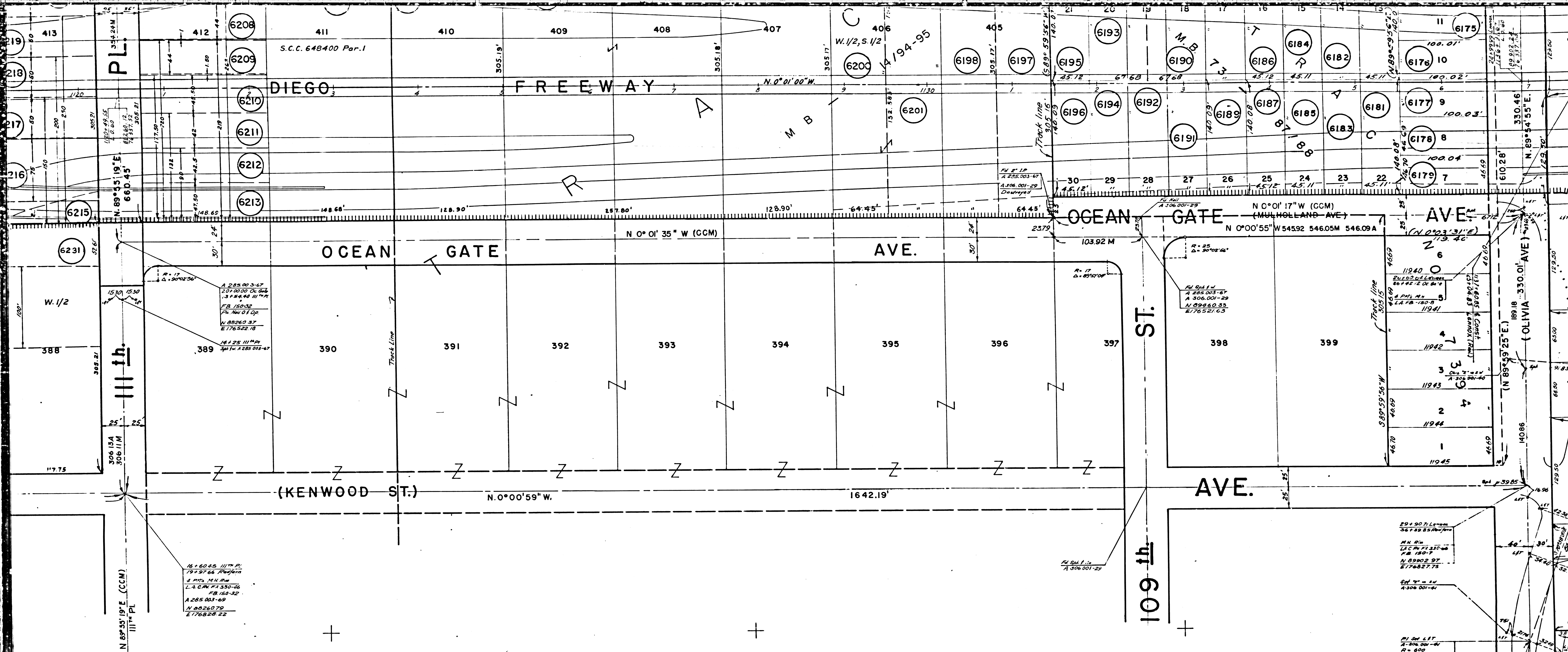
FILED MAP NO. 20274



F.M. 20274

BI OF 3

- 6261 v. Lester Industries Pop Ltd
Fee 11-7-61
D 1412-385
- 6262 v. Pioneer Aluminum Supply Co
Fee 11-7-61
D 1412-385
- 6263 v. Pioneer Aluminum Supply Co
Fee 11-7-61
D 1412-385
- 6264 v. Standard Oil Co of Calif
Fee 11-7-61
D 1412-375
- 6265 v. Hughes Aircraft Co
Fee 11-7-61
D 1412-377
- 6266 v. Hughes Aircraft Co
Fee 11-7-61
D 1412-381
- 6267 v. Richfield Oil Corp
Fee 5-24-61
D 1231-185
- 6268 v. Kaplan Tract Co
Fee 1-24-61
D 816-742
- 6269 v. Emps Kaplan I Wm R Ticker
Fee 1-24-61
D 816-742
- 6270 v. Harry J Baker et al
Fee 4-3-59
D 421-209
- 6271 v. H J Baker
Fee 4-3-59
D 421-135
- 6272 v. H J Baker
Fee 4-3-59
D 421-135
- 6273 v. H J Baker
Fee 4-3-59
D 421-135
- 6274 v. H J Baker
Fee 4-3-59
D 421-135
- 6275 v. H J Baker
Fee 4-3-59
D 421-135
- 6276 v. H J Baker
Fee 4-3-59
D 421-135
- 6277 v. H J Baker
Fee 4-3-59
D 421-135
- 6278 v. H J Baker
Fee 4-3-59
D 421-135
- 6279 v. H J Baker
Fee 4-3-59
D 421-135
- 6280 v. H J Baker
Fee 4-3-59
D 421-135
- 6281 v. H J Baker
Fee 4-3-59
D 421-135
- 6282 v. H J Baker
Fee 4-3-59
D 421-135
- 6283 v. H J Baker
Fee 4-3-59
D 421-135
- 6284 v. H J Baker
Fee 4-3-59
D 421-135
- 6285 v. H J Baker
Fee 4-3-59
D 421-135
- 6286 v. H J Baker
Fee 4-3-59
D 421-135
- 6287 v. H J Baker
Fee 4-3-59
D 421-135
- 6288 v. H J Baker
Fee 4-3-59
D 421-135
- 6289 v. H J Baker
Fee 4-3-59
D 421-135
- 6290 v. H J Baker
Fee 4-3-59
D 421-135
- 6291 v. H J Baker
Fee 4-3-59
D 421-135
- 6292 v. H J Baker
Fee 4-3-59
D 421-135
- 6293 v. H J Baker
Fee 4-3-59
D 421-135
- 6294 v. H J Baker
Fee 4-3-59
D 421-135
- 6295 v. H J Baker
Fee 4-3-59
D 421-135
- 6296 v. H J Baker
Fee 4-3-59
D 421-135
- 6297 v. H J Baker
Fee 4-3-59
D 421-135
- 6298 v. H J Baker
Fee 4-3-59
D 421-135
- 6299 v. H J Baker
Fee 4-3-59
D 421-135
- 6300 v. H J Baker
Fee 4-3-59
D 421-135



Gray et ux 12-10-60	6216	Russell W. Ware Fee D 235-663	6210	E. N. Copain Fee D 434-368	6144	Clara B. Bengie et ux Fee D 426-7	6138	Harval M. Sather et al Fee D 362-841	6134	Adeline Herzog Fee D 488-187	6194	Westchester Prop. Corp. Fee D 303-310	6182	Holly Hoop Fee D 330-982
Wuser 8-11-59	6210	Schick Road Eas. Acquired per Memo 10-22-59	6219	Frank L. Bush et ux Fee D 3791-166							6193	Frank B. Marshall et ux Fee D 329-24	6181	Martin & Chambers et ux Fee D 705-808
Arriaga 4-23-58	621A	Manuel Bonales et ux Fee D 417-723	6212	Leonard M. Elkins et ux Fee D 1206-139	6143	Bernardo Bernardino et ux Fee D 982-925	6202	John Mc Iver et ux Fee D 391-525	6129	H. J. Nikkel Fee D 432-380	6192	Carl E. De Silvia Fee D 321-379	6180	Amel H. Slaybough et ux Fee D 668-925
Order of 2-15-55			6211	S. A. Garcia et al Fee D 305-256			6201	Doyle C. Tandy et ux Fee D 391-525	6128	Ronald H. Baker et ux Fee D 444-624	6191	John Knopp et ux Fee D 684-974	6179	Oscar Tjerling et ux Fee D 323-227
Den 1-30-59			6210	Jerry Austin et ux Fee D 236-364	6142	Leo Domschutz et ux Fee D 411-513	6200	William V. Clark et ux Fee D 319-663	6127	Harry J. Baker Fee D 444-624	6190	Dwight E. Fischer Adm. Fee D 800-721	6178	John M. Attitude et ux Fee D 317-613
Ward et ux 4-13-59			6209	Perry D. Calhoun et ux Fee D 931-854			6198	James N. Patton et al Fee D 727-973	6126	Earl H. Wilke et ux Fee D 342-302	6189	R. I. P. Brown Fee D 903-530	6177	Delwin V. Murray et ux Fee D 46-27
Watts 4-27-59			6208	O. R. Downer et ux Fee D 462-241	6141	S. S. Alexandra et ux Fee D 441-225	6196	Mollie W. Askew et ux Fee D 427-676	6188	Walter L. Elliot et ux Fee D 449-27	6186	Clarence J. Curver et ux Fee D 523-202	6176	Ellis D. Davis et ux Fee D 373-182
W. et ux 1-5-58			6207	James E. Coker et ux Fee D 931-860			6136	Leonard E. Llewellyn et ux Fee D 811-703	6187	Douglas L. Belding et ux Fee D 140-703	6185	B. R. Parrish Fee D 642-376	6175	G. R. Parrish Fee D 642-376
Benner 2-20-60			6206	Fred O. Devault et ux Fee D 931-863	6140	W. L. Sheets et ux Fee D 405-287	6135	Mollie W. Askew Fee D 427-580	6184	Charles J. Elliot et ux Fee D 317-622	6183	R. T. Hines et ux Fee D 426-977	6174	Luther C. Burt et ux Fee D 390-214
L 5-28-59			6205	John G. Benton et ux Fee D 827-378			6134	Russell H. Cox et ux Fee D 422-686	6183	Angie A. Albright Fee D 443-12	6182	Kenneth E. Farrell et ux Fee D 428-30		
W. et ux 2-2-59			6203	Roger H. Ohms et ux Fee D 882-440	6139	Peter DeLuca Fee D 405-246	6133	M. J. Mann Fee D 428-379	6181	Thomas M. Estrica et ux Fee D 342-521	6180	Thomas K. Cochran et ux Fee D 317-670		
Wason 5-14-72			6137	C. O. Copain Fee D 454-372			6132	John F. Poole et ux Fee D 487-928	6179		6178			

F.M. 20274

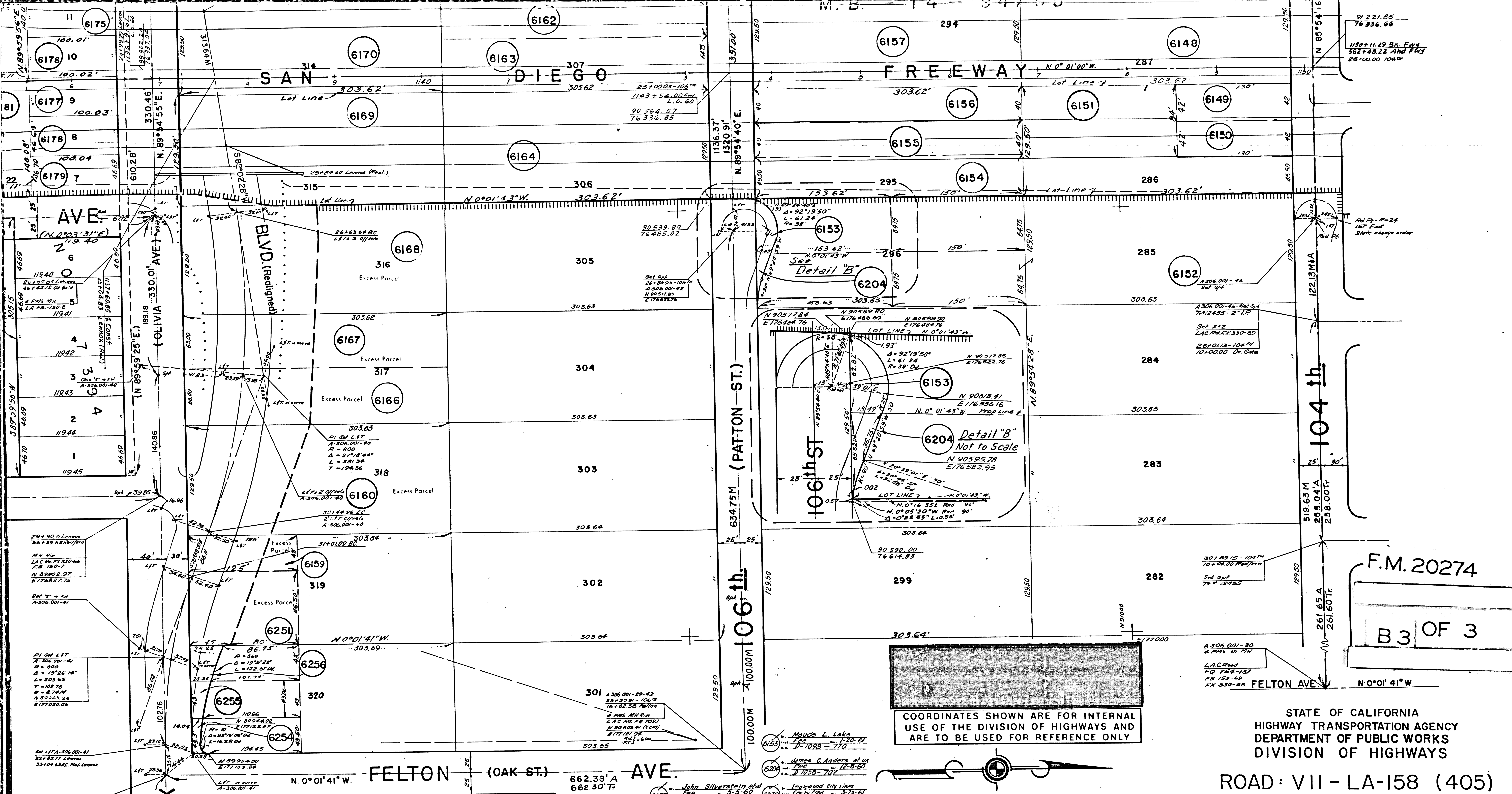
B 2 OF 3

LENNOX

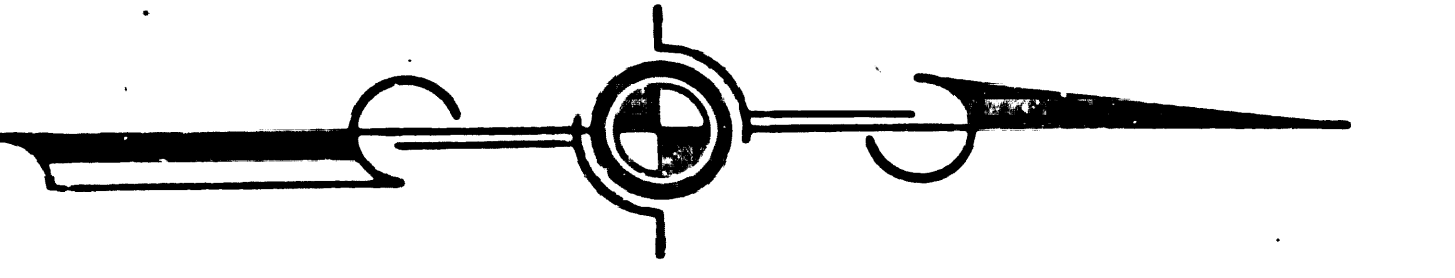
29 + 50 ft. Lennox
36 + 38 ft. Lennox
M. N. B. Co.
L.A.C. 77-310-46
P.B. 190-7
N. 89802-97
E. 176827-75
S. 400-001-41

Set 400' on
4-306-001-41
53 + 21 ft. Lennox
10 + 80 ft. Lennox
640 ft. 00 ft. 110-45
P.B. 318-30
P.B. 199
P.B. 183-34
P.B. 189-6
L.P. A-306-001-41
N. 89802-97
E. 177188-06

FOR CONTINUATION SEE MAP NO.



COORDINATES SHOWN ARE FOR INTERNAL USE OF THE DIVISION OF HIGHWAYS AND ARE TO BE USED FOR REFERENCE ONLY



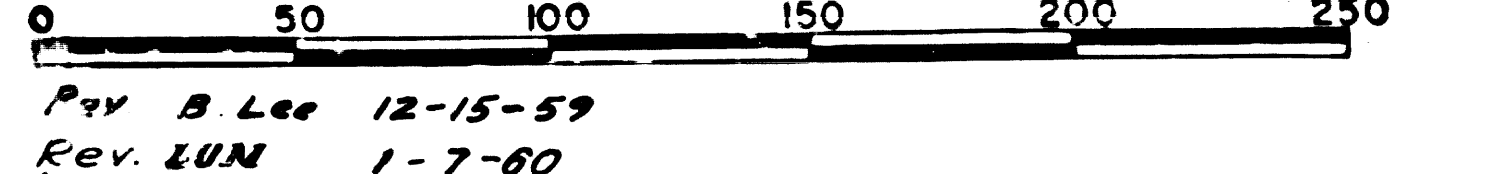
STATE OF CALIFORNIA
HIGHWAY TRANSPORTATION AGENCY
DEPARTMENT OF PUBLIC WORKS
DIVISION OF HIGHWAYS

ROAD: VII - LA-158 (405)
RIGHT OF WAY MAP
IMPERIAL HIGHWAY
TO
104th ST.

MONUMENTATION MAP

REPRODUCIBLE COPY FILED WITH L.A. CO. SURVEYOR 4-64

F-1924



Rev. LUN 1-7-60
FIM 24-1-55
RATIO OF 21

6204 Edward E. Clifton et ux Fee 3-22-61 D 1163-619	6140 Clara Oakes Fee 11-18-48 D 278-623	6171 B.W. Satterfield et ux Fee 5-3-58 D 36348-335	6100 Richard C. Crum et ux Fee 2-2-60 D 836-37	6160 Guy Meyer Fee 12-2-58 D 291-988	6200 Henry W. Stigmeier et ux Fee 8-8-61 D 245-508
6235 Robert W. Rembo et ux Fee 8-21-61 D 7198-737	6173 Seymour R. Rorer et ux Fee 12-9-58 D 299-103	6170 Cozmine Wilson Fee 9-22-60 D 932-933	6167 Raymond G. Huemoller Fee 4-23-59 D 243-7	6280 Weacamp Inc. Fee 2-4-61 D 210-517	6147 Richard C. Crum et ux Fee 1-22-59 D 341-14
6251 Elsie Hatcher Fee 5-29-61 D 7236-30	6172 Walter Bralin et ux Fee 6-16-60 D 880-712	6169 Ralph Lee Alvord et ux Fee 12-17-58 D 307-946	6169 Blanche Anderson et ux Fee 9-27-57 D 3436-350	6166 Eula Rebecca Carlbirth et ux Fee 10-28-61 D 1394-262	6148 Wm A. Meyers et ux Fee 7-11-56 D 629-442
6159 Ma. v. Ellen Richardson Fee 5-17-60 D 848-432	6172 Ma. v. Ellen Richardson Fee 5-17-60 D 848-432	6169 Ma. v. Ellen Richardson Fee 5-17-60 D 848-432	6166 Ma. v. Ellen Richardson Fee 5-17-60 D 848-432	6156 Heber J. Bates et ux Fee 1-14-59 D 328-583	6149 Otto Warner Fee 3-25-59 D 406-714
6145 Ma. v. Ellen Richardson Fee 5-17-60 D 848-432	6172 Ma. v. Ellen Richardson Fee 5-17-60 D 848-432	6169 Ma. v. Ellen Richardson Fee 5-17-60 D 848-432	6166 Ma. v. Ellen Richardson Fee 5-17-60 D 848-432	6156 Heber J. Bates et ux Fee 1-14-59 D 328-583	6149 Otto Warner Fee 3-25-59 D 406-714
6164 Manual Arbesy et ux Fee 3-23-60 D 790-317	6163 Doria C. Wade Fee 12-11-58 D 302-273	6162 Kermit G. Winje et ux Fee 11-20-58 D 313-187	6154 Foster Nialle et ux Fee 11-20-58 D 281-422	6151 Albert J. Hennig et ux Fee 5-29-57 D 329-376	

F.M. 20274
B3 OF 3

LENNOX

106th ST (PATTON ST.)

104th St

FELTON AVE (OAK ST.)

AVE

BLVD (Redigned)

6175, 6176, 6177, 6178, 6179, 6170, 6169, 6168, 6167, 6166, 6165, 6164, 6163, 6162, 6157, 6156, 6155, 6154, 6153, 6204, 6152, 6151, 6150, 6149, 6148, 6147, 6146, 6145, 6144, 6143, 6142, 6141, 6140, 6139, 6138, 6137, 6136, 6135, 6134, 6133, 6132, 6131, 6130, 6129, 6128, 6127, 6126, 6125, 6124, 6123, 6122, 6121, 6120, 6119, 6118, 6117, 6116, 6115, 6114, 6113, 6112, 6111, 6110, 6109, 6108, 6107, 6106, 6105, 6104, 6103, 6102, 6101, 6100, 6099, 6098, 6097, 6096, 6095, 6094, 6093, 6092, 6091, 6090, 6089, 6088, 6087, 6086, 6085, 6084, 6083, 6082, 6081, 6080, 6079, 6078, 6077, 6076, 6075, 6074, 6073, 6072, 6071, 6070, 6069, 6068, 6067, 6066, 6065, 6064, 6063, 6062, 6061, 6060, 6059, 6058, 6057, 6056, 6055, 6054, 6053, 6052, 6051, 6050, 6049, 6048, 6047, 6046, 6045, 6044, 6043, 6042, 6041, 6040, 6039, 6038, 6037, 6036, 6035, 6034, 6033, 6032, 6031, 6030, 6029, 6028, 6027, 6026, 6025, 6024, 6023, 6022, 6021, 6020, 6019, 6018, 6017, 6016, 6015, 6014, 6013, 6012, 6011, 6010, 6009, 6008, 6007, 6006, 6005, 6004, 6003, 6002, 6001, 6000