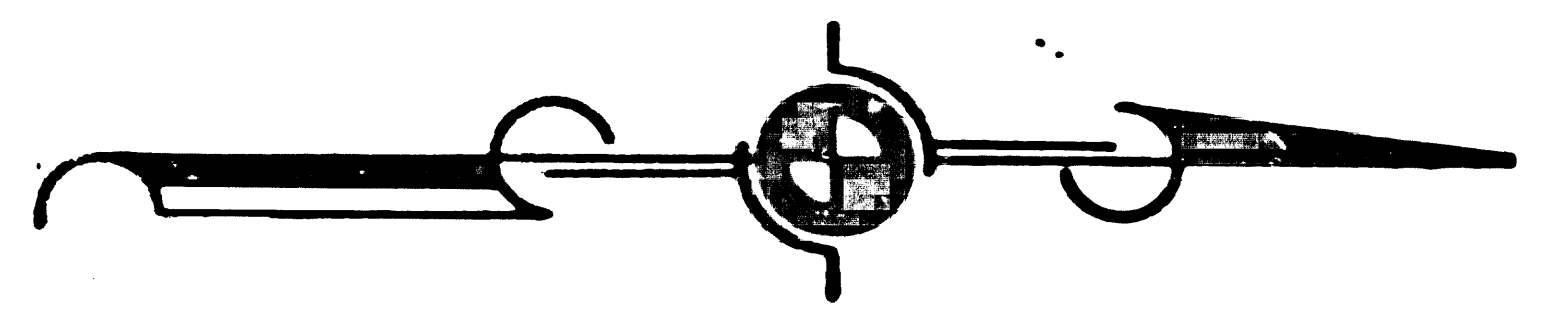
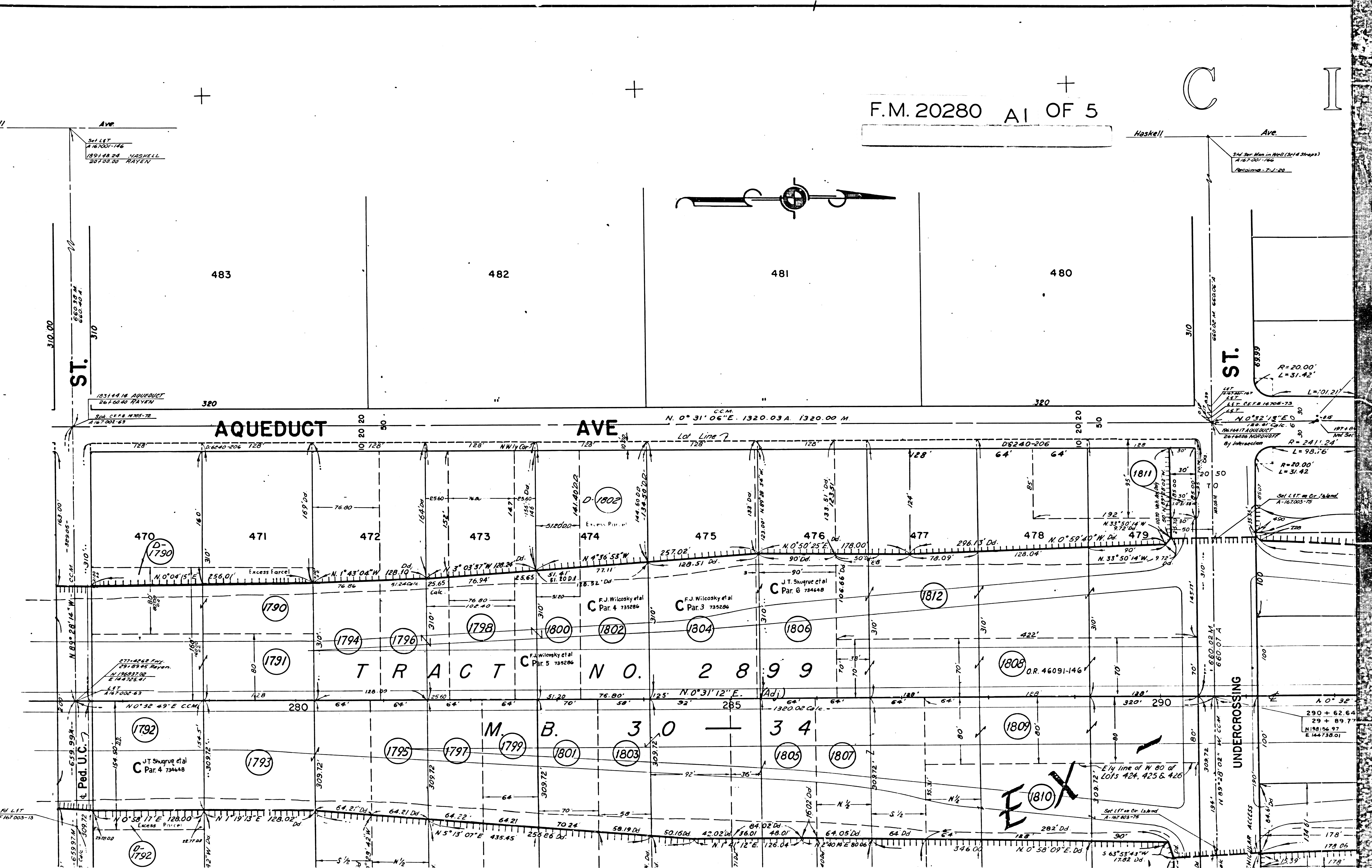
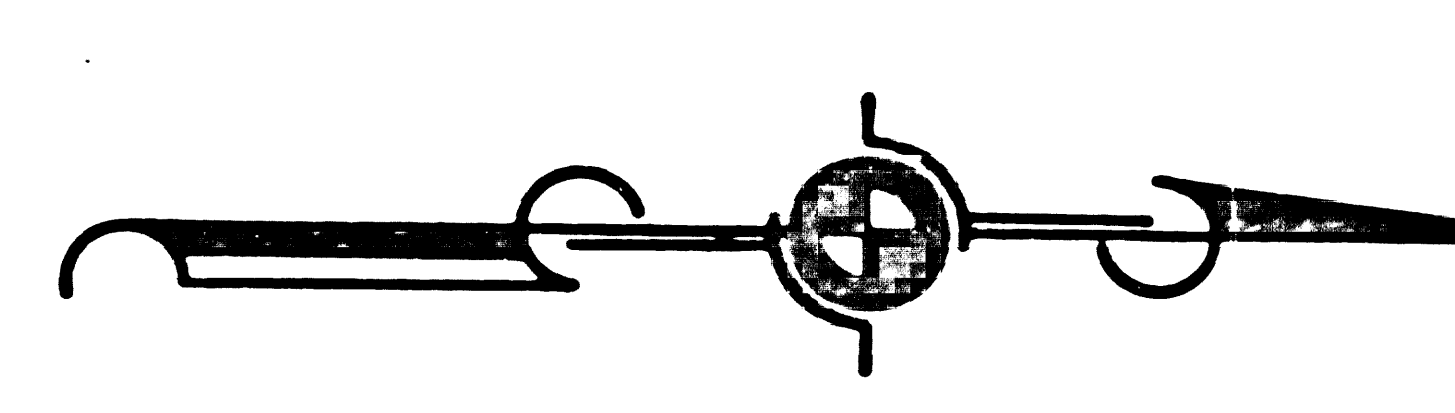


FOR CONTINUATION SEE MAP NO. F-1943

F.M. 20280 AI OF 5

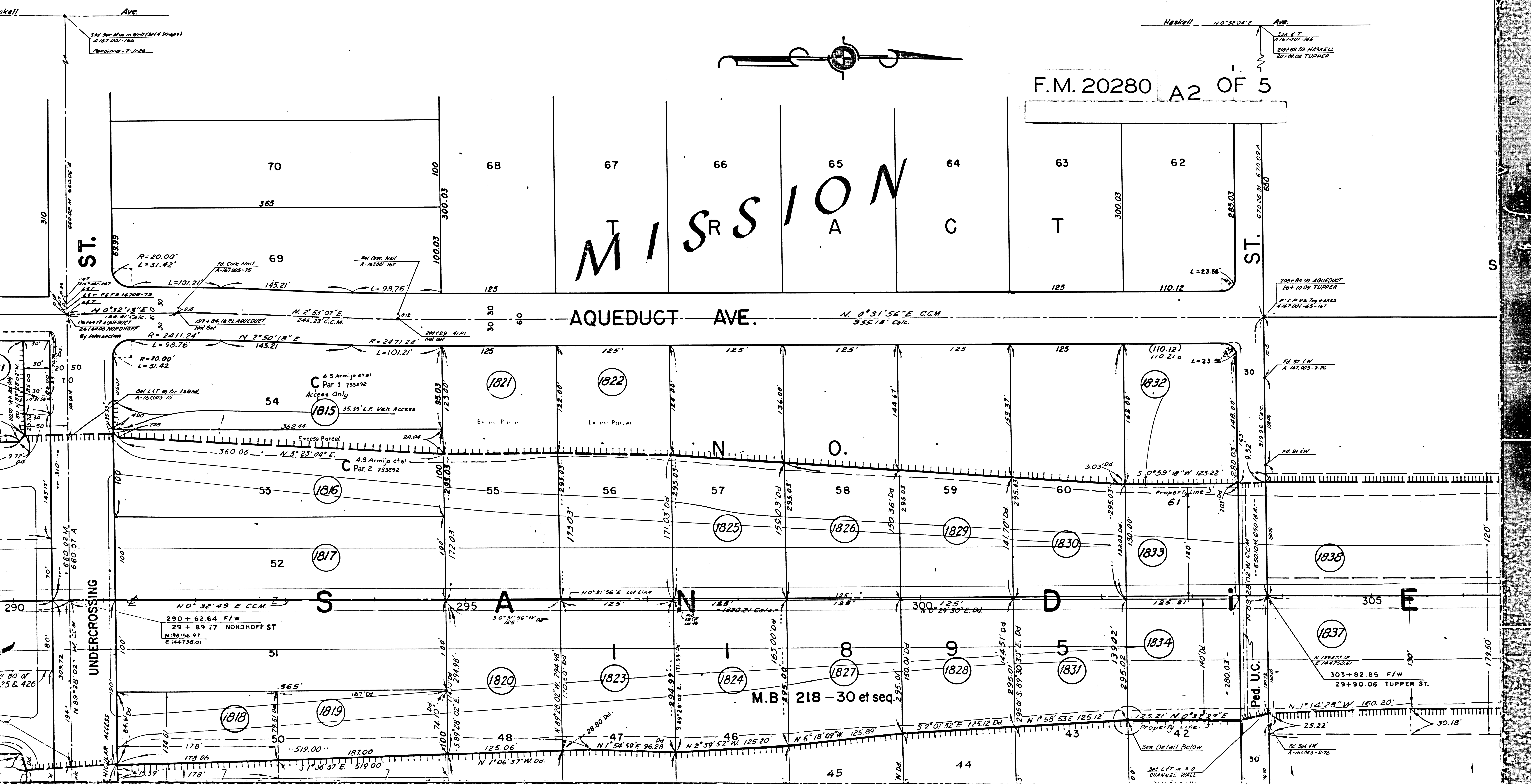


C I T + Y O + F L O S



F.M. 20280 A2 OF 5

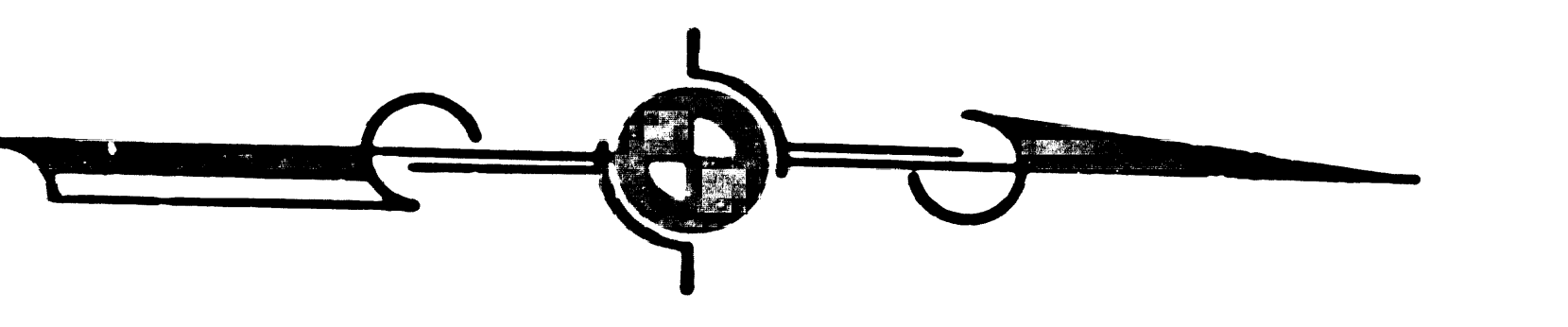
MISSION



O S A N G E L S

F.M. 20280 A3 OF 5

SUBDIVISION NO. 1 OF THE PROPERTY OF THE PORTER LAND AND WATER CO.



DE

SAN

AWP
S&P E.T.
A-167-501-146
201+00.52 HASKELL
201+00.00 TUPPER

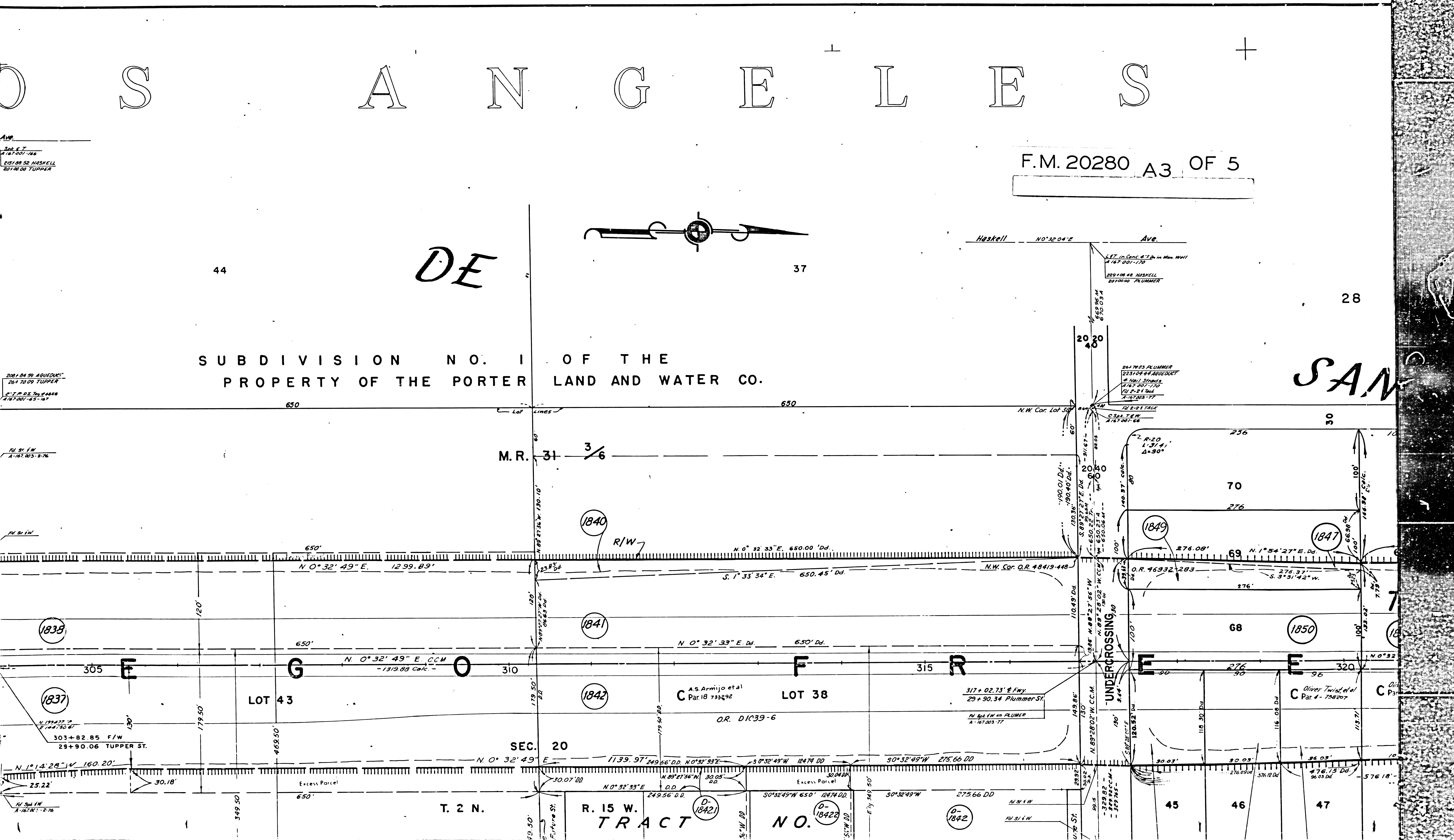
201+04.59 AQUEDUCT
26+10.09 TUPPER
S.T.P. DE T. & A. 200
A-167-001-65-167

PL 91 F/W
A-167-003-2-76

PL 91 F/W

N 179+22.2
E 124+75.0

PL 91 F/W
A-167-003-2-76



44

37

28

M.R. 31 3/6

SEC. 20

T. 2 N.

R. 15 W.

TRACT

NO.

(1835)

(1837)

(1840)

(1841)

(1842)

(1842)

(1842)

(1849)

(1847)

(1850)

F.M. 20280 A4 OF 5

28

21

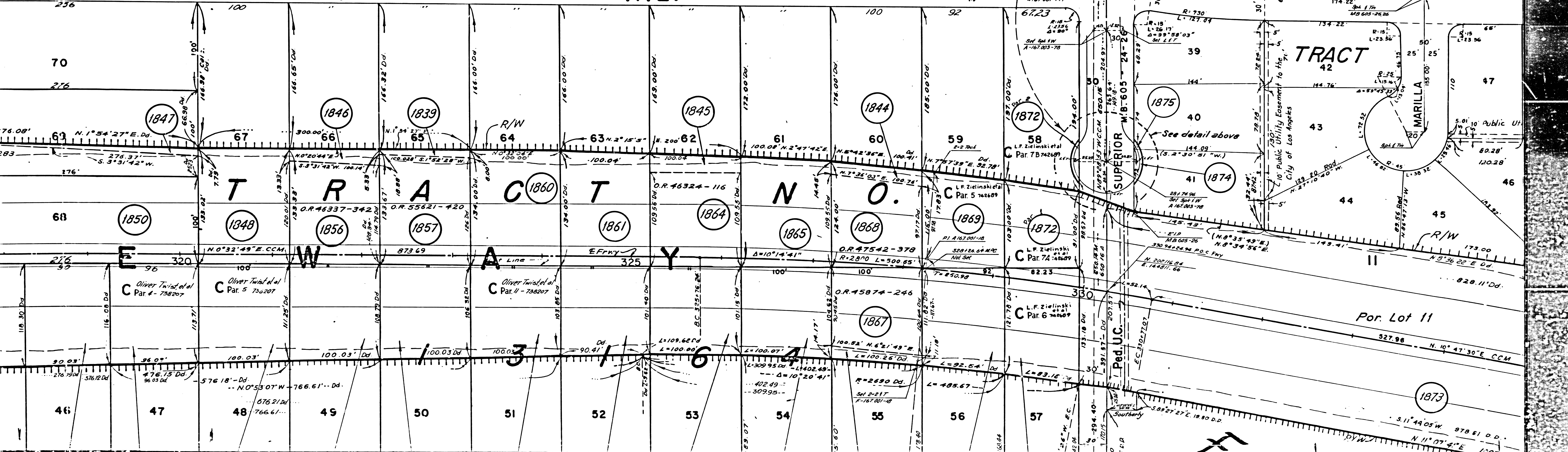
SAN

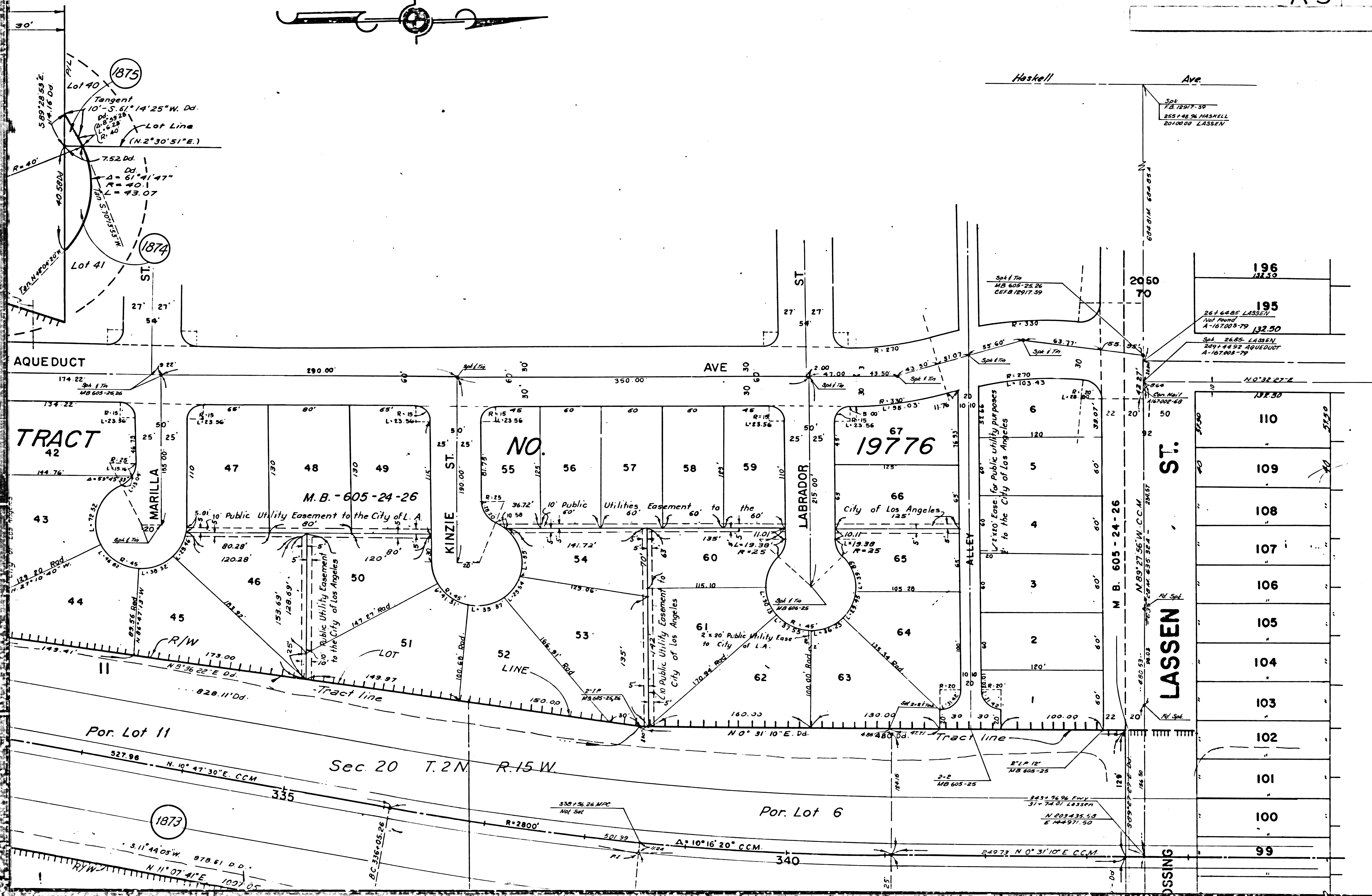
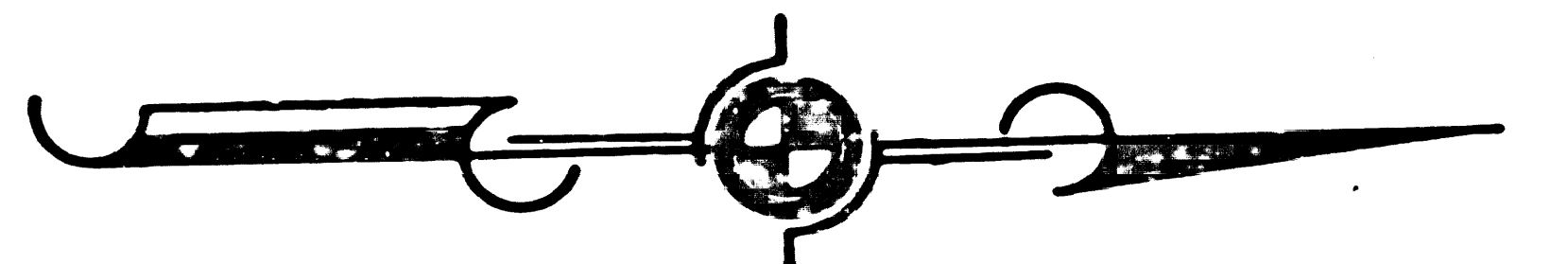
AQUEDUCT

AVE.

AQUEDUCT

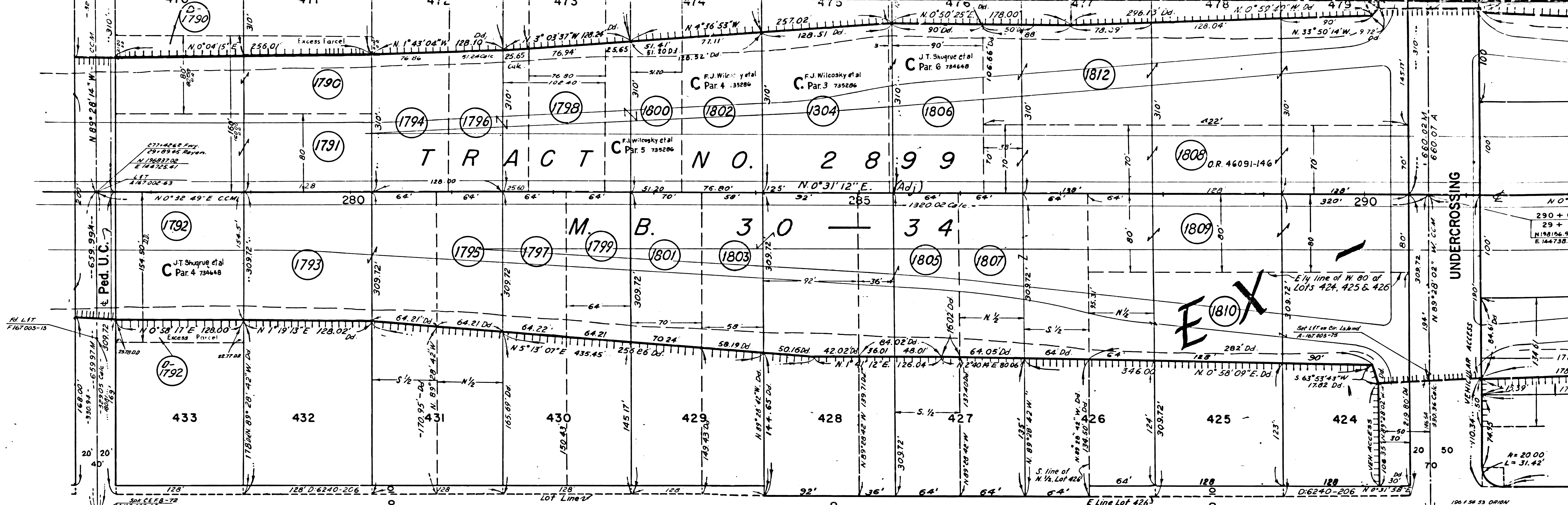
TRACT



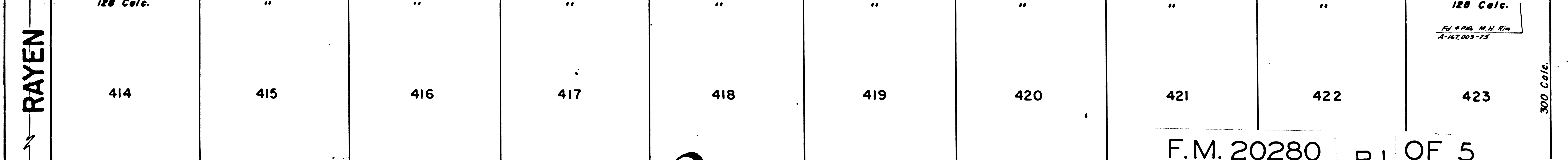


CONTINUATION SEE MAP NO. F-1945

FOR CONTINUATION SEE MAP NO. F

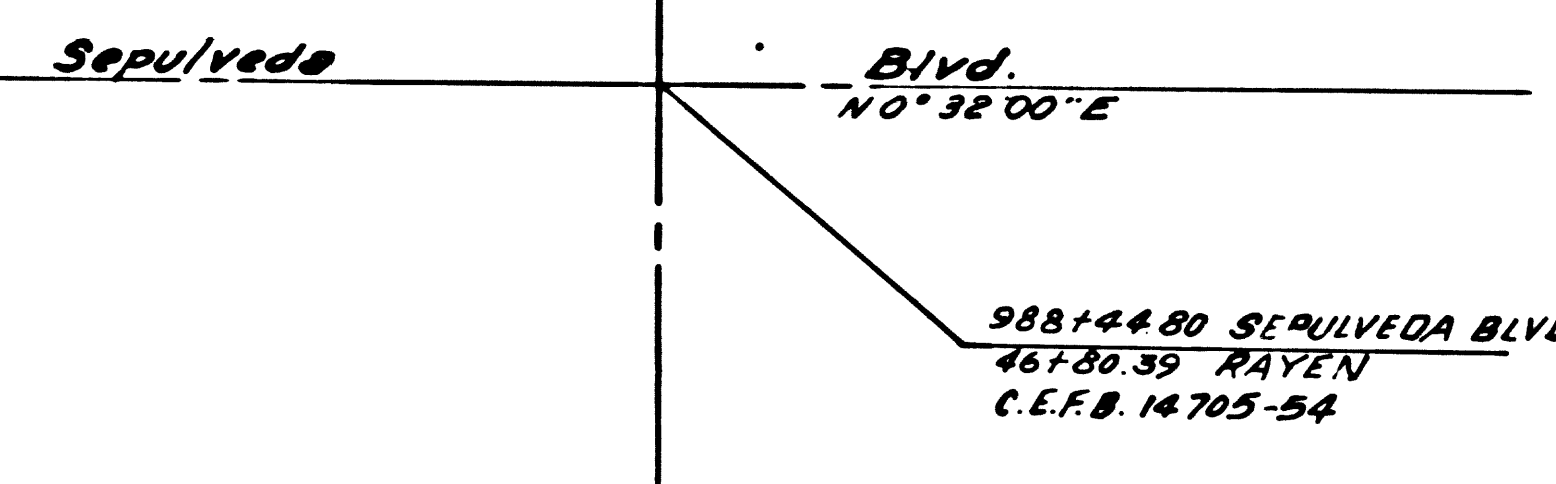


ORION (ISABELLA AVE.) AVE. N. 0° 31' 18" E CCM 1320' A 1319.92 M E Line Lot 426

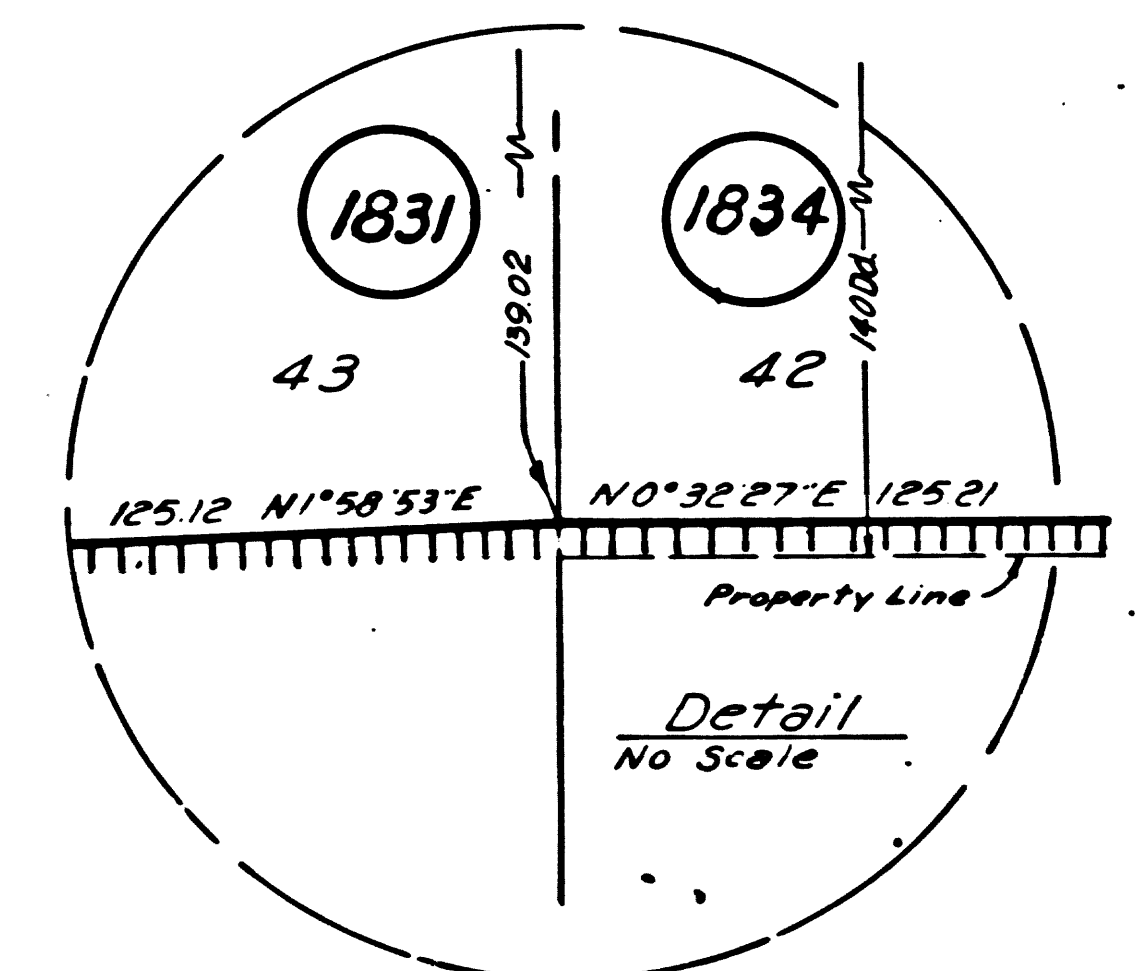
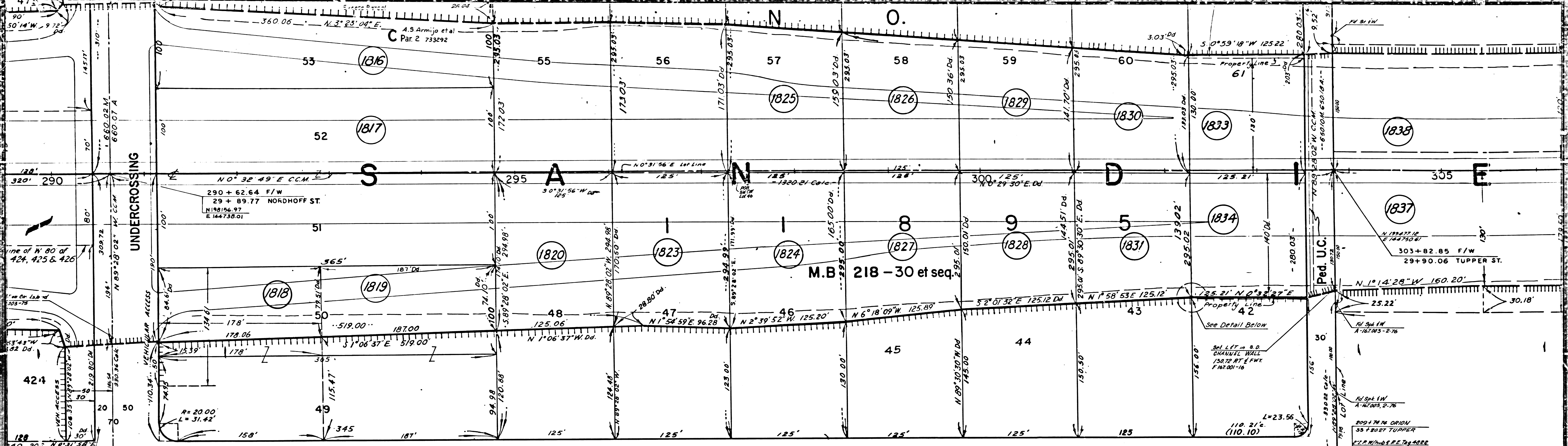


RANCHO

F.M. 20280 BI OF 5



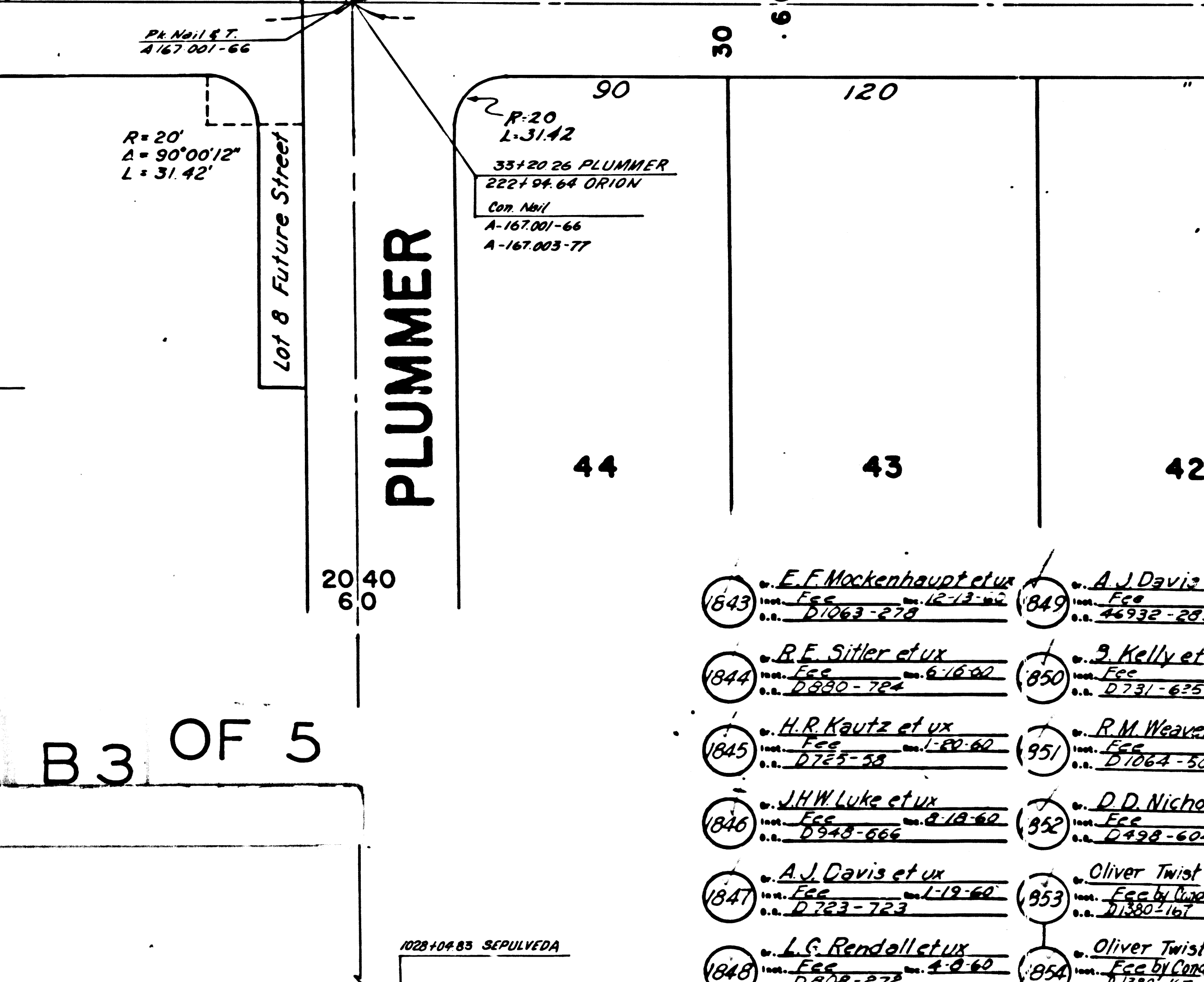
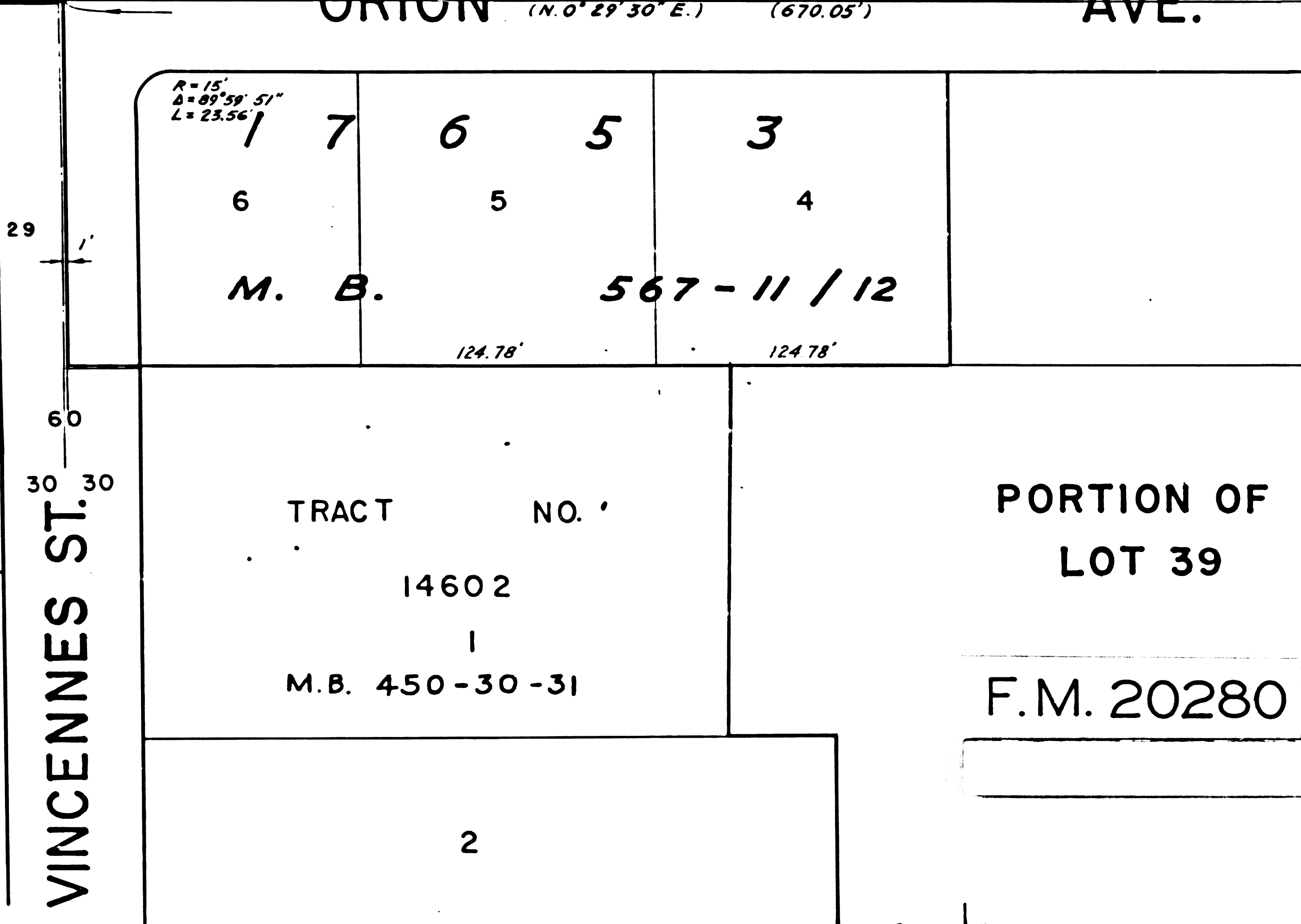
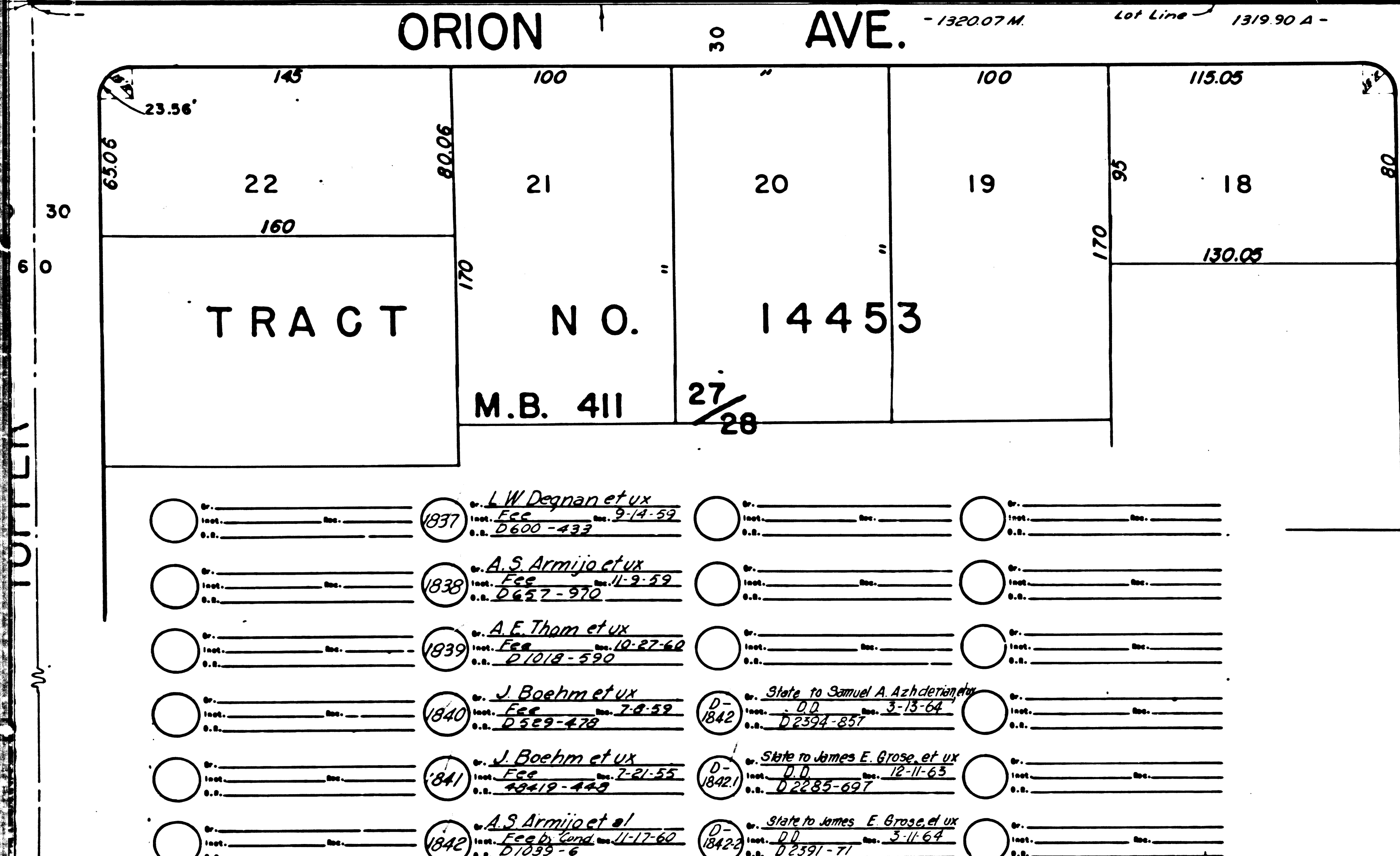
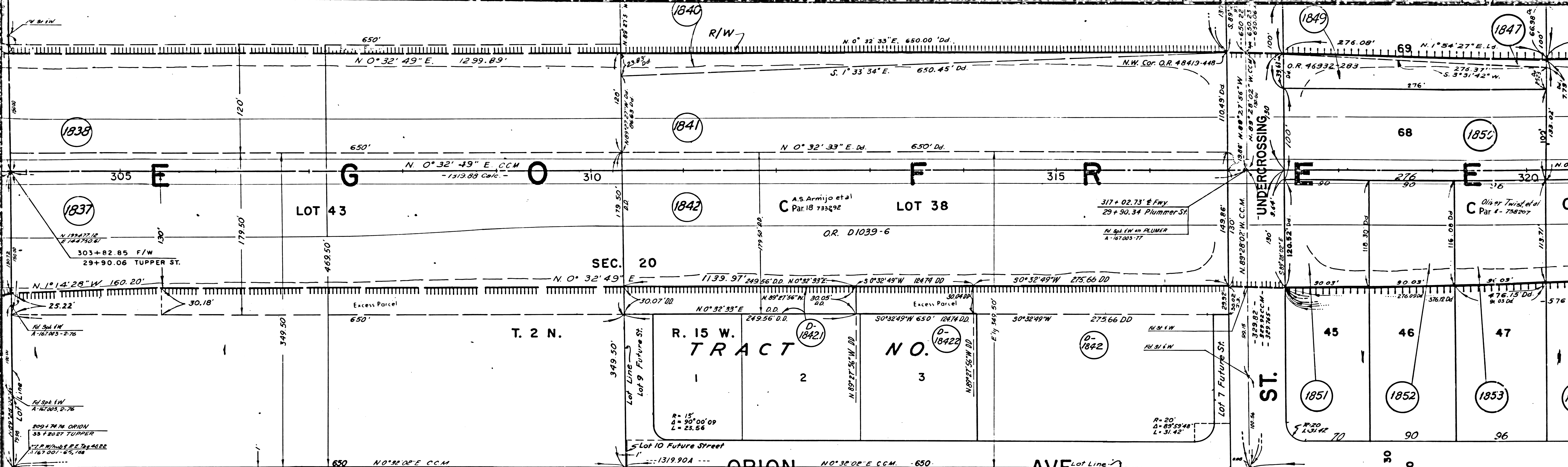
- | | | | | | | | | | | | | | | | | | | | | | | | | | | | | | | | | | | | | | | | | |
|---------------------------------------|--|---|--|--|--|---|---|--|--|---|--|--|--|--|--|--|---|--|--|--|--|--------------------------------------|--|---|------------------------------------|---|---|------------------------------------|---|---|------------------------------------|---|--|------------------------------------|---|---------------------------------------|------------------------------------|---|--|------------------------------------|
| 1790 C. J. Allen
Fee
D. 538-493 | 1796 F. J. Wilcosky et ux
Fee
D. 734-180 | 1808 F. J. Wilcosky et ux
Fee by Land
D. 1022-100 | 1809 H. H. Glasier et ux
Fee
D. 2253-620 | 1791 S. S. Beck et ux
Fee
D. 217-237 | 1797 H. E. Martinez et ux
Fee
D. 574-903 | 1803 V. H. Hammer et ux
Fee
D. 727-63 | 1807 R. R. Larson et ux
Fee
D. 773-82 | 1792 J. T. Shugrue et al
Fee
D. 212-60 | 1798 F. Pickl et ux
Fee
D. 322-664 | 1804 F. J. Wilcosky et ux
Fee by Land
D. 1022-100 | 1810 M. L. Erhart et ux
Fee
D. 629-322 | 1793 W. M. Dairymple et ux
Fee
D. 550-30 | 1799 A. Cariago et ux
Fee
D. 322-664 | 1805 F. M. Seldon et ux
Fee
D. 521-622 | 1811 J. C. Hanlon et ux
Fee
D. 714-187 | 1794 L. L. Bassett et ux
Fee
D. 222-59 | 1800 F. J. Wilcosky et ux
Fee by Land
D. 1022-100 | 1806 J. T. Shugrue et al
Fee by Land
D. 1022-100 | 1812 H. H. Glasier et ux
Fee
D. 2253-620 | 1795 S. G. Amador
Fee
D. 574-584 | 1801 R. A. Schmitz et ux
Fee
D. 550-30 | 1807 C. Sheppard
Fee
D. 222-59 | 1790 State of Norman M. Monaghan et ux
Fee
D. 2253-620 | 1815 A. S. Armijo et al
Fee
D. 222-60 | 1821 H. J. Bar
Fee
D. 222-60 | 1792 State of John R. Kennedy
Fee
D. 2022-876 | 1816 A. S. Armijo et al
Fee
D. 222-60 | 1822 B. H. Bar
Fee
D. 222-60 | 1793 State of John R. Kennedy
Fee
D. 2022-876 | 1817 A. H. Mireck et ux
Fee
D. 222-60 | 1823 H. L. Bar
Fee
D. 222-60 | 1794 State of John R. Kennedy
Fee
D. 2022-876 | 1818 C. R. Olevine et ux
Fee
D. 222-60 | 1824 A. F. Lee
Fee
D. 222-60 | 1795 State of John R. Kennedy
Fee
D. 2022-876 | 1819 F. S. Ohland
Fee
D. 222-60 | 1825 J. E. Ger
Fee
D. 222-60 | 1796 State of John R. Kennedy
Fee
D. 2022-876 | 1820 J. T. Petty et al
Fee
D. 222-60 | 1826 R. B. Bar
Fee
D. 222-60 |
|---------------------------------------|--|---|--|--|--|---|---|--|--|---|--|--|--|--|--|--|---|--|--|--|--|--------------------------------------|--|---|------------------------------------|---|---|------------------------------------|---|---|------------------------------------|---|--|------------------------------------|---|---------------------------------------|------------------------------------|---|--|------------------------------------|



F.M. 20280 B 2 OF 5

1815	A.S. Armijo et al Ecc. by Cont. 2-22-60 D. 282-623	1821	H.J. Bare et ux Ecc. 12-27-52 D. 645-409	1827	L. Ferry et ux Ecc. 8-2-60 D. 938-628	1833	J.O. Malley et ux Ecc. 6-16-53 D. 503-613
1816	A.S. Armijo et al Ecc. by Cont. 12-14-60 D. 207-46	1822	R.H. Bear et ux Ecc. 2-27-39 D. 349-382	1828	H.M. Morrell et ux Ecc. 2-23-58 D. 63-660	1834	E.I. Kline et ux Ecc. 6-16-53 D. 503-504
1817	A.H. Mineck et ux Ecc. 12-14-54 D. 3573-361	1829	H.L. Polk et ux Ecc. 3-7-60 D. 268-124	1829	R.A. Hewitt Ecc. 12-6-60 D. 730-403		
1818	C.R. Olewine et ux Ecc. 12-14-59 D. 5828-790	1824	A.F. Lentz et ux Ecc. 11-3-60 D. 1025-902	1830	C.W. Wheeler et ux Ecc. 5-31-60 D. 622-572		
1819	F.S. Ohland Ecc. 11-24-59 D. 269-976	1825	J.F. Gerst et ux Ecc. 12-2-60 D. 629-53	1831	A.W. Tackett et ux Ecc. 12-23-59 D. 221-476		
1820	J.T. Petty et al Ecc. 2-16-60 D. 790-779	1820	R.B. Brissenden et ux Ecc. 2-21-60 D. 821-102	1832	R.P. Rouff et ux Ecc. 1-3-61 D. 1029-963		

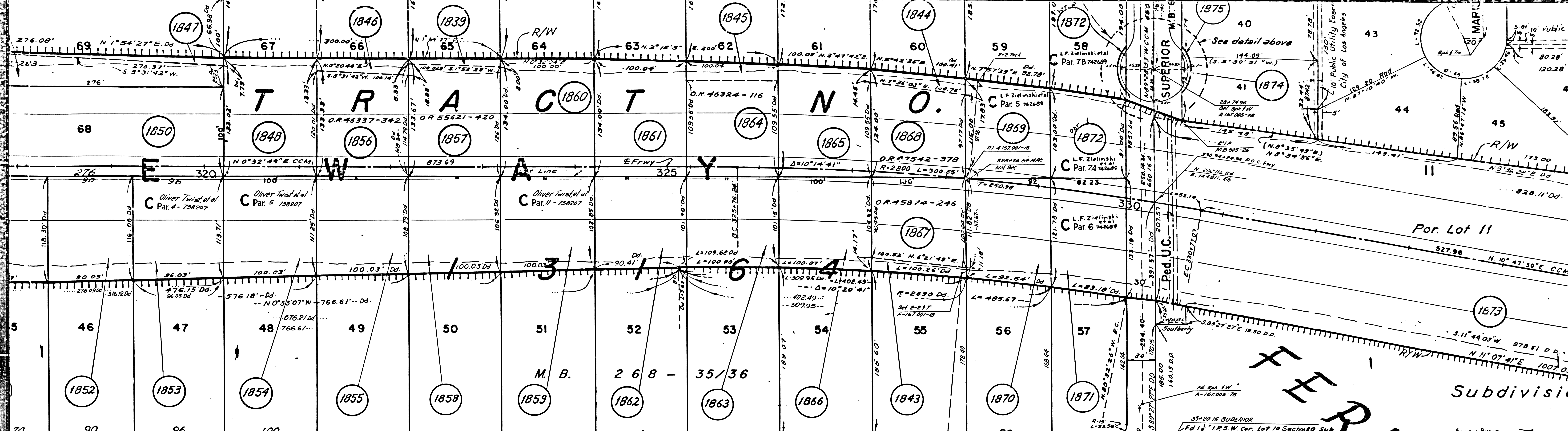
1837	L.W. Doy Ecc. 6-30-53 D. 600-3
1838	A.S. Armijo et al Ecc. 6-16-53 D. 503-504
1839	A.E. Thomsen Ecc. 6-16-53 D. 503-504
1840	J. Boelt Ecc. 6-16-53 D. 503-504
1841	J. Boelt Ecc. 6-16-53 D. 503-504
1842	A.S. Armijo et al Ecc. 6-16-53 D. 503-504



- 1837 L.W. Deegan et ux
- 1838 A.S. Armijo et ux
- 1839 A.F. Thom et ux
- 1840 J. Boehm et ux
- 1841 J. Boehm et ux
- 1842 A.S. Armijo et ux

- 1843 F.F. Muckenheupel et ux
- 1844 R.F. Siller et ux
- 1845 H.R. Kautz et ux
- 1846 J.H.W. Luke et ux
- 1847 A.J. Davis et ux
- 1848 J.S. Rendall et ux

102210483 SEPULVEDA
 Tray Min 7-J-22
 C.C.M. 167.43
 Sepulveda NO 2159 E
 CG 90.10 to 7-J-21
 NO 32 02' E
 BLVD
 EC 40.41 to 6-J-24



ORION AVE.

FERNANDO

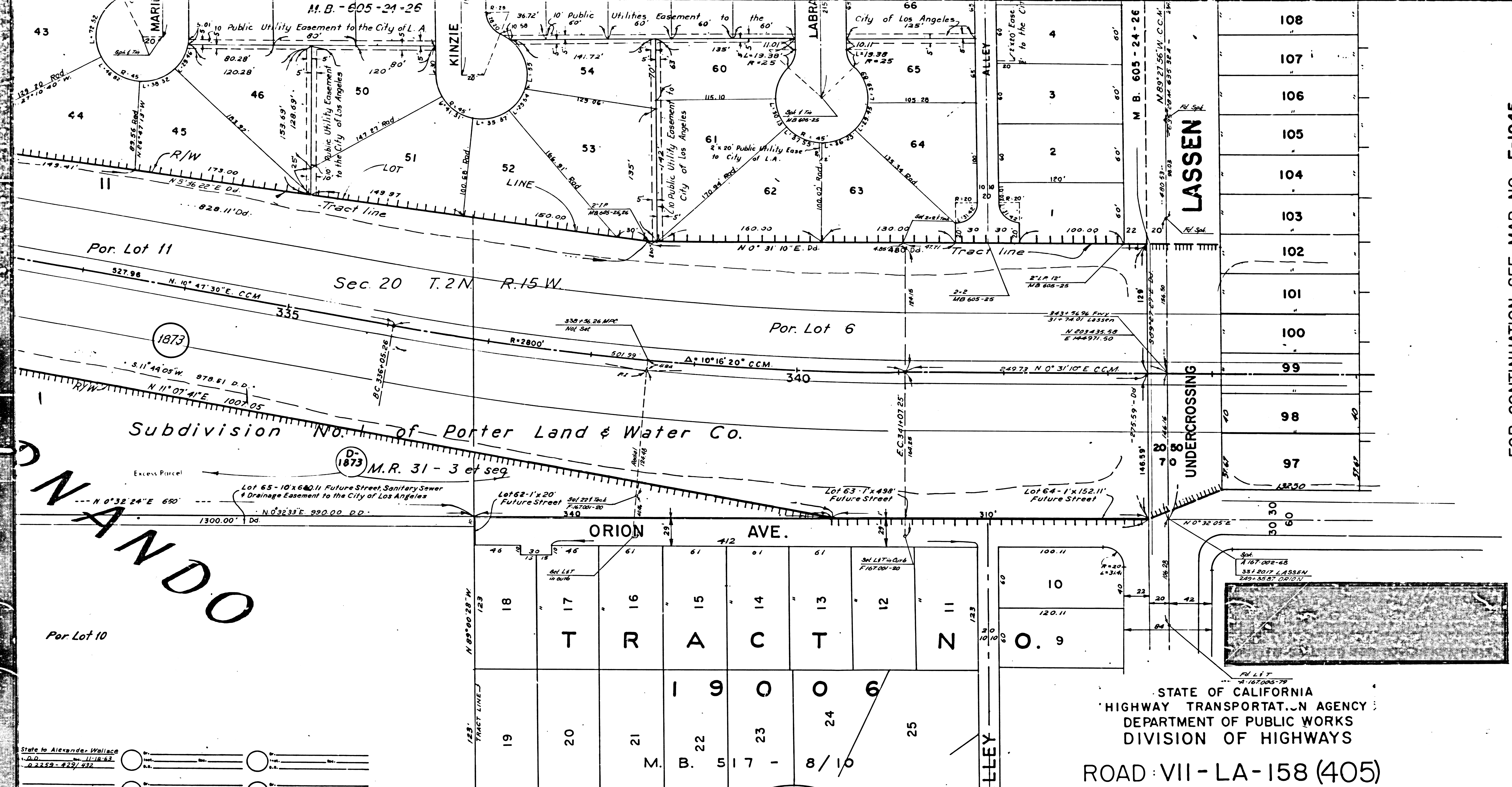
SUPERIOR ST.

Por Lot 10
F.M. 20280 B4 OF 5

- (1843) F.F. Muckenaupt et ux
D. 12-60
D. 1263-278
- (1844) B.F. Sittler et ux
D. 6-18-60
D. 2320-724
- (1845) H.R. Kautz et ux
D. 7-25-58
D. 2725-34
- (1846) A.J. Davis et ux
D. 1-12-60
D. 253-723
- (1847) J.H.W. Luke et ux
D. 2-18-60
D. 2725-34
- (1848) L.G. Rendall et ux
D. 2-8-60
D. 2528-272
- (1849) A.J. Davis et ux
D. 2-12-60
D. 44322-299
- (1850) B. Kelly et ux
D. 7-31-60
D. 2731-625
- (1851) R.M. Weaver
D. 12-14-60
D. 1064-309
- (1852) D.D. Nicholls et ux
D. 5-28-60
D. 558-624
- (1853) Oliver Twist et al
D. 10-6-61
D. 1380-167
- (1854) Oliver Twist et al
D. 10-6-61
D. 1380-167
- (1855) T.L. Dukes et ux
D. 2-27-60
D. 2725-311
- (1856) L.G. Rendall et ux
D. 2-9-58
D. 46337-346
- (1857) A.E. Thom et ux
D. 3-12-67
D. 25631-226
- (1858) D. Twist et ux
D. 11-4-60
D. 2725-311
- (1859) Oliver Twist et al
D. 10-6-61
D. 1380-167
- (1860) A.C. Irwin et ux
D. 4-3-58
D. 262-162
- (1861) W.H. Thirkettle et ux
D. 11-23-60
D. 1023-200
- (1862) H.A. McGee et ux
D. 2-9-60
D. 593-320
- (1863) C.A. Berwald et ux
D. 3-18-61
D. 616-251
- (1864) H.R. Kautz et ux
D. 2-18-60
D. 48324-116
- (1865) E.T. Fields et ux
D. 3-14-60
D. 2779-352

- (1866) K.F. Daniels et ux
D. 5-27-53
D. 237-523
- (1867) H.C. Roger Jr. et ux
D. 10-18-58
D. 2327-226
- (1868) R.E. Sittler et ux
D. 8-20-55
D. 4224-329
- (1869) L.F. Zielinski et al
D. 1-4-61
D. 1022-34
- (1870) D.A. Wagoner et ux
D. 5-19-60
D. 2257-226
- (1871) L.F. Zielinski et al
D. 2-16-61
D. 2725-311
- (1872) L.F. Zielinski et al
D. 2-16-61
D. 2725-311
- (1873) H.H. Development Co.
D. 10-18-58
D. 2327-226
- (1874) J.D. Schulman et ux
D. 2-12-60
D. 1274-724
- (1875) D.A. Derse et ux
D. 2-12-60
D. 2327-226

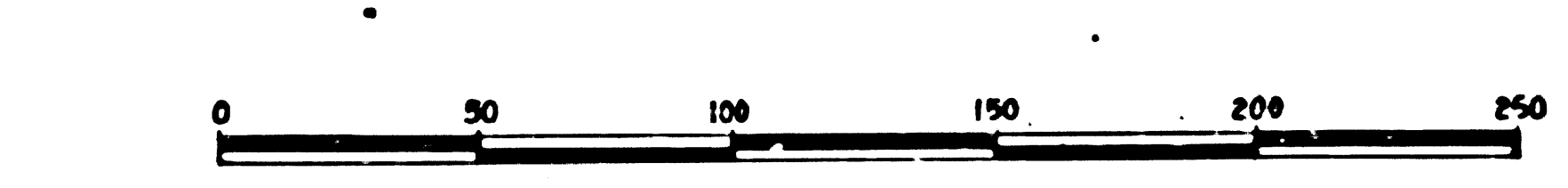
- (1876) State to Alexander Wallace
D. 11-18-62
D. 2259-279/432



State to Alexander Wallace
D.D. 11/18/62
02259-425/437

MONUMENTATION MAP
 The bearing N89°27'56"W along the E of Lassen St. from Aqueduct Ave. East was taken as the basis of bearings for this map. Monumentation taken from CCM 167.49 (4/59) and A Note A 167.002, 003

STATE OF CALIFORNIA
 HIGHWAY TRANSPORTATION AGENCY
 DEPARTMENT OF PUBLIC WORKS
 DIVISION OF HIGHWAYS
 ROAD VII - LA - 158 (405)
RIGHT OF WAY MAP
 RAYEN STREET to
 LASSEN STREET



F.M. 20280 B5 OF 5
 F-1944

FOR CONTINUATION SEE MAP NO. F-1945

