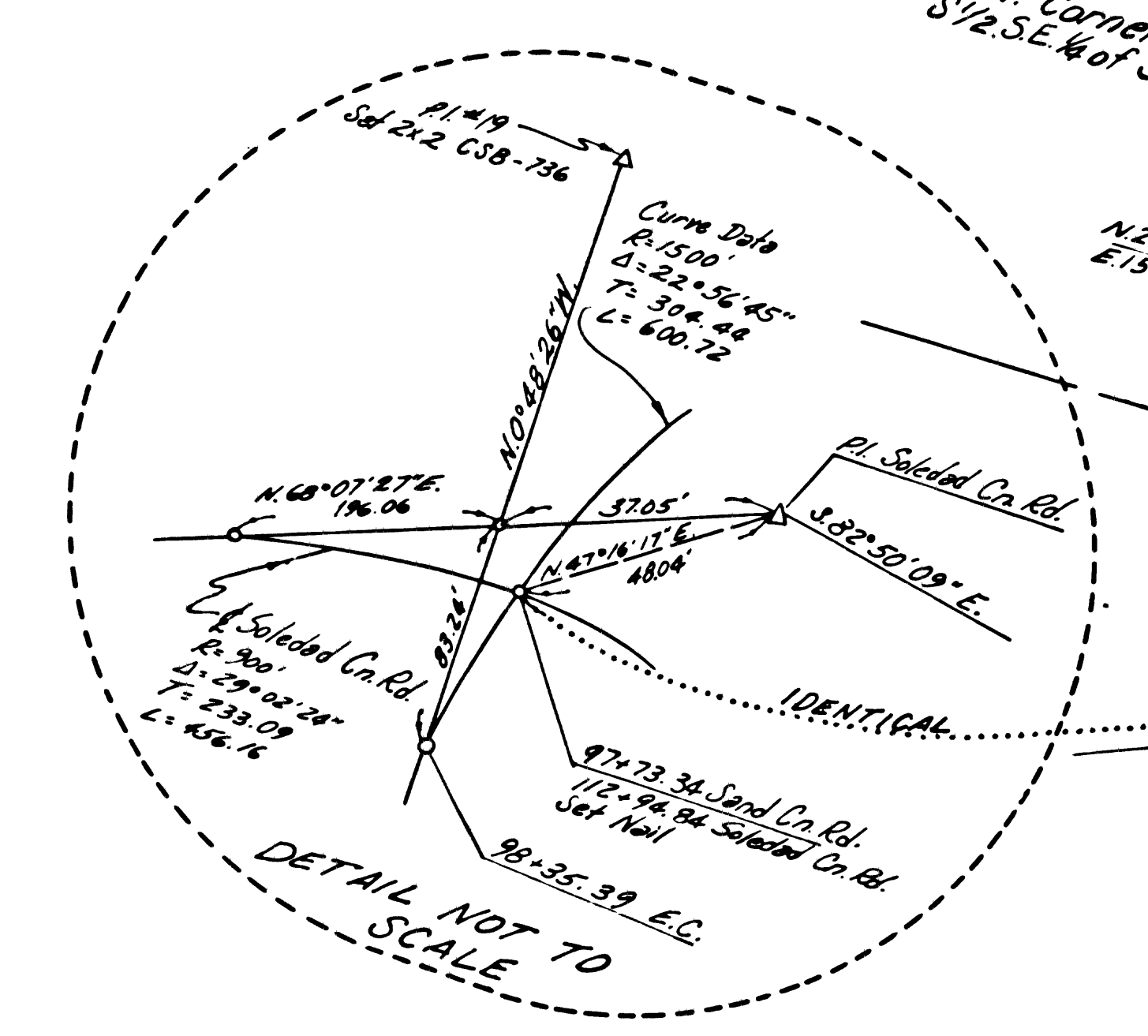
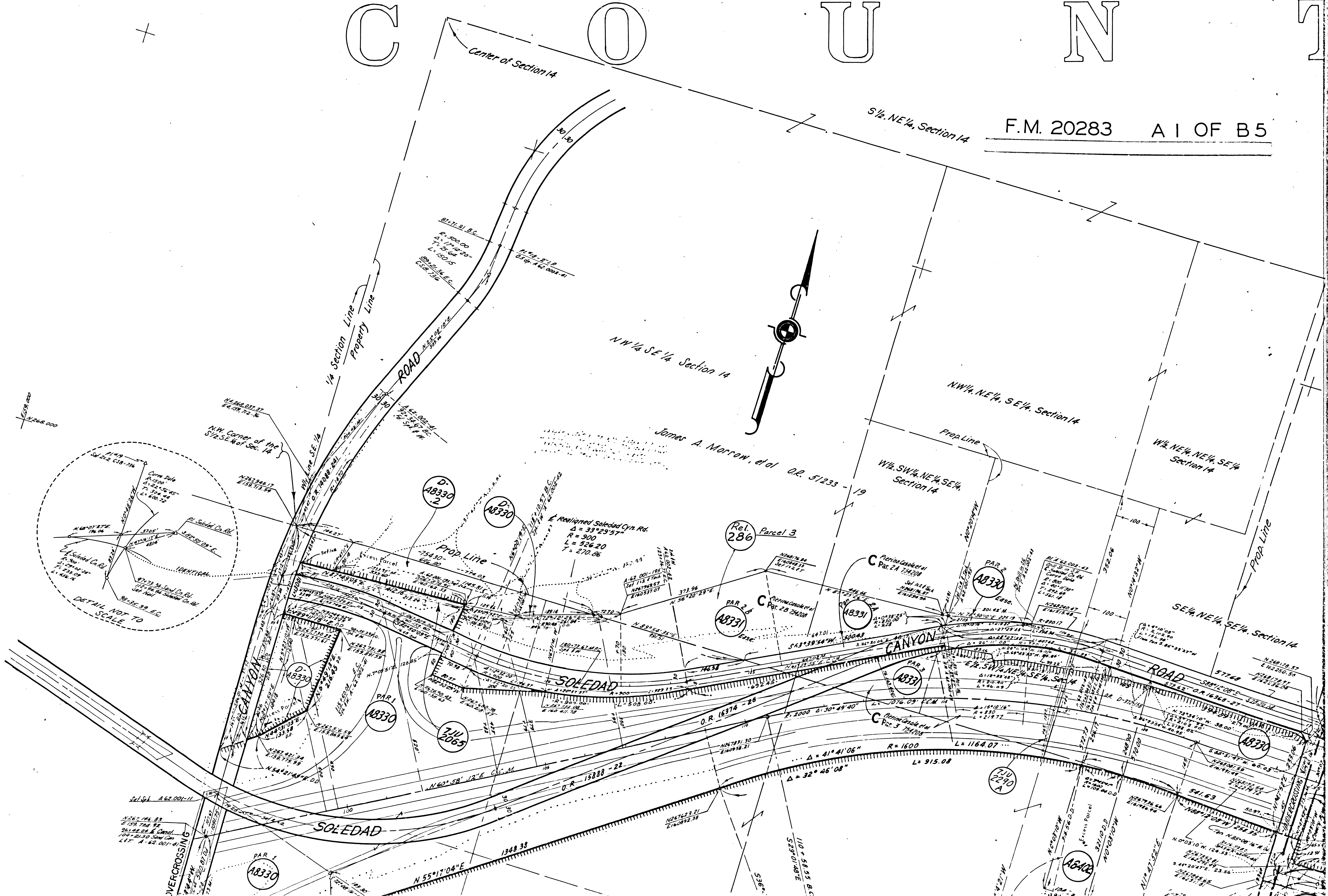


C O U N T Y

F.M. 20283 A 1 OF B 5



CONTINUATION SEE MAP NO. F-1058

40-2234

T

Y

O

F

T. 4 N.

R. 15 W.

S. B. B. E

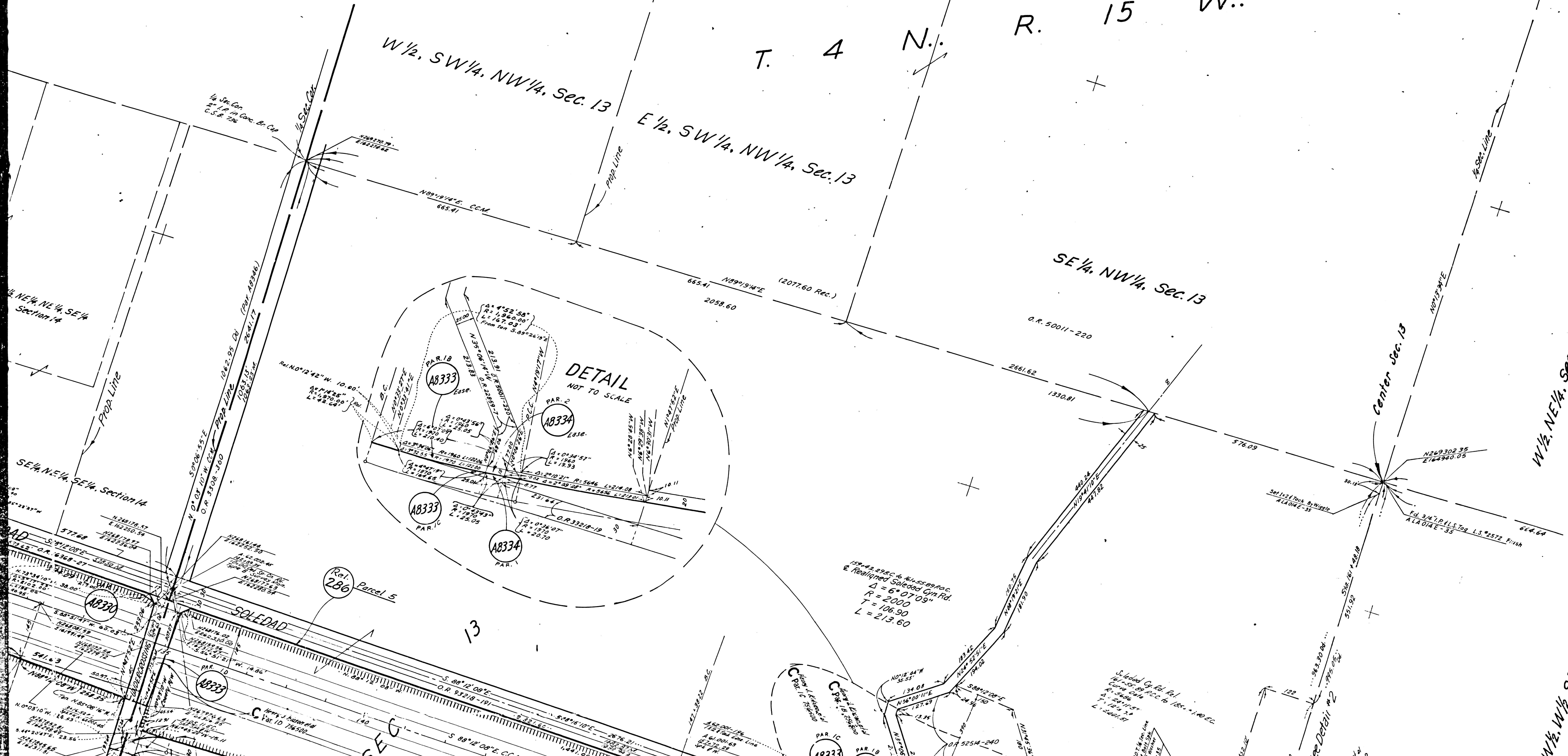
W 1/2, SW 1/4, NW 1/4, Sec. 13

E 1/2, SW 1/4, NW 1/4, Sec. 13

SE 1/4, NW 1/4, Sec. 13

W 1/2, NE 1/4, Sec. 13

W 1/2, W 1/4, Sec. 13



DETAIL
NOT TO SCALE

Rel. Parcel 5

SOLEDAD

138°42'28" & 41°55'00" POC.
 & Realigned Solidood Cr. Fid.
 D = 6°07'09"
 R = 2000
 T = 106.90
 L = 213.60

S. Solid Cr. Rel. Rel.
 Curve Data
 R = 2000
 T = 106.90
 L = 213.60

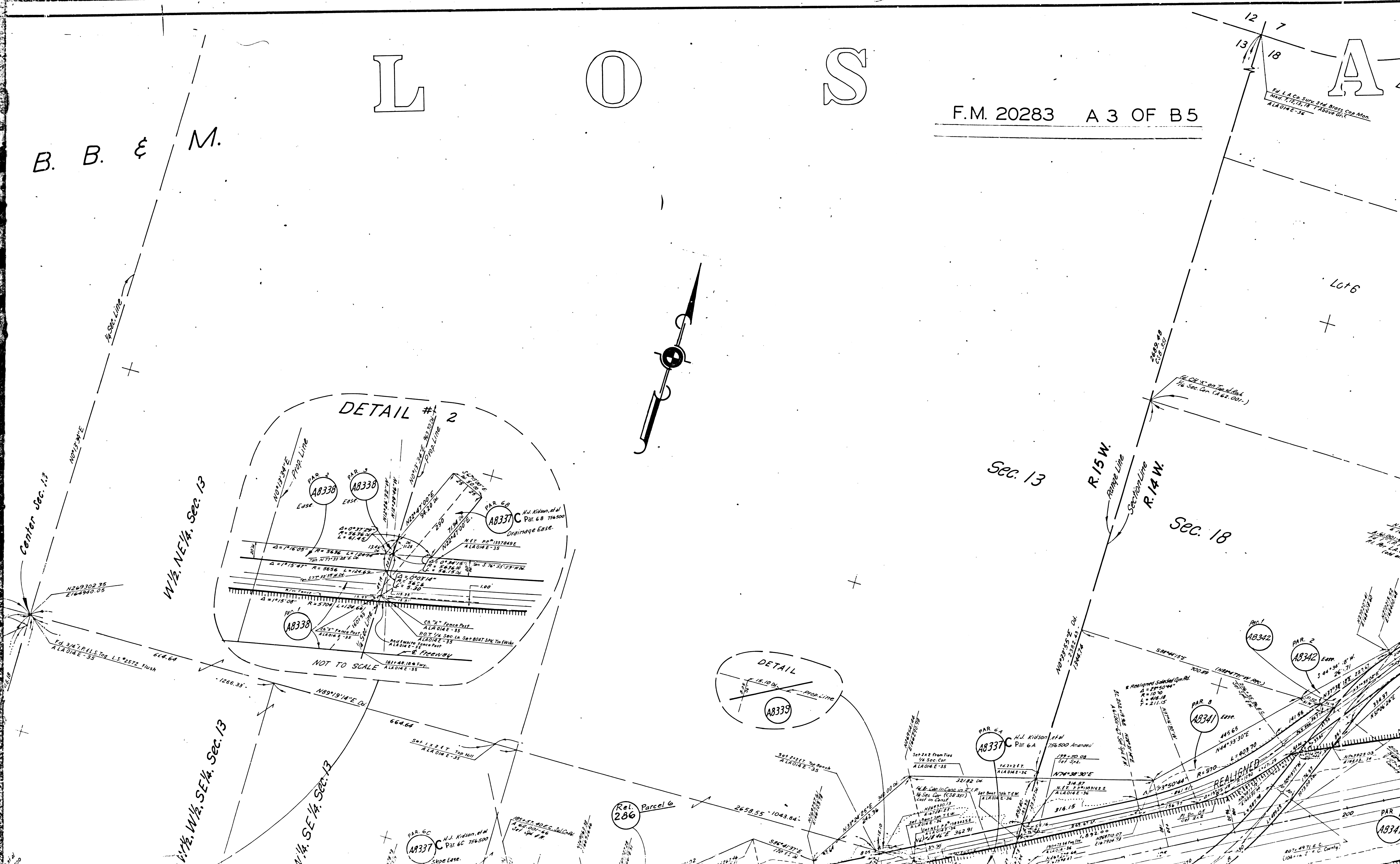
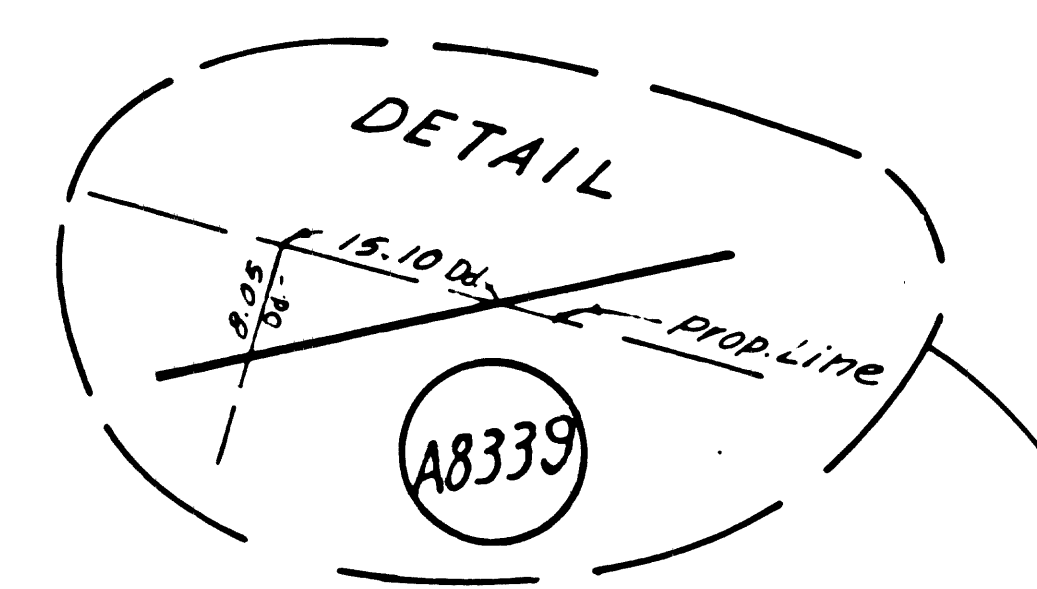
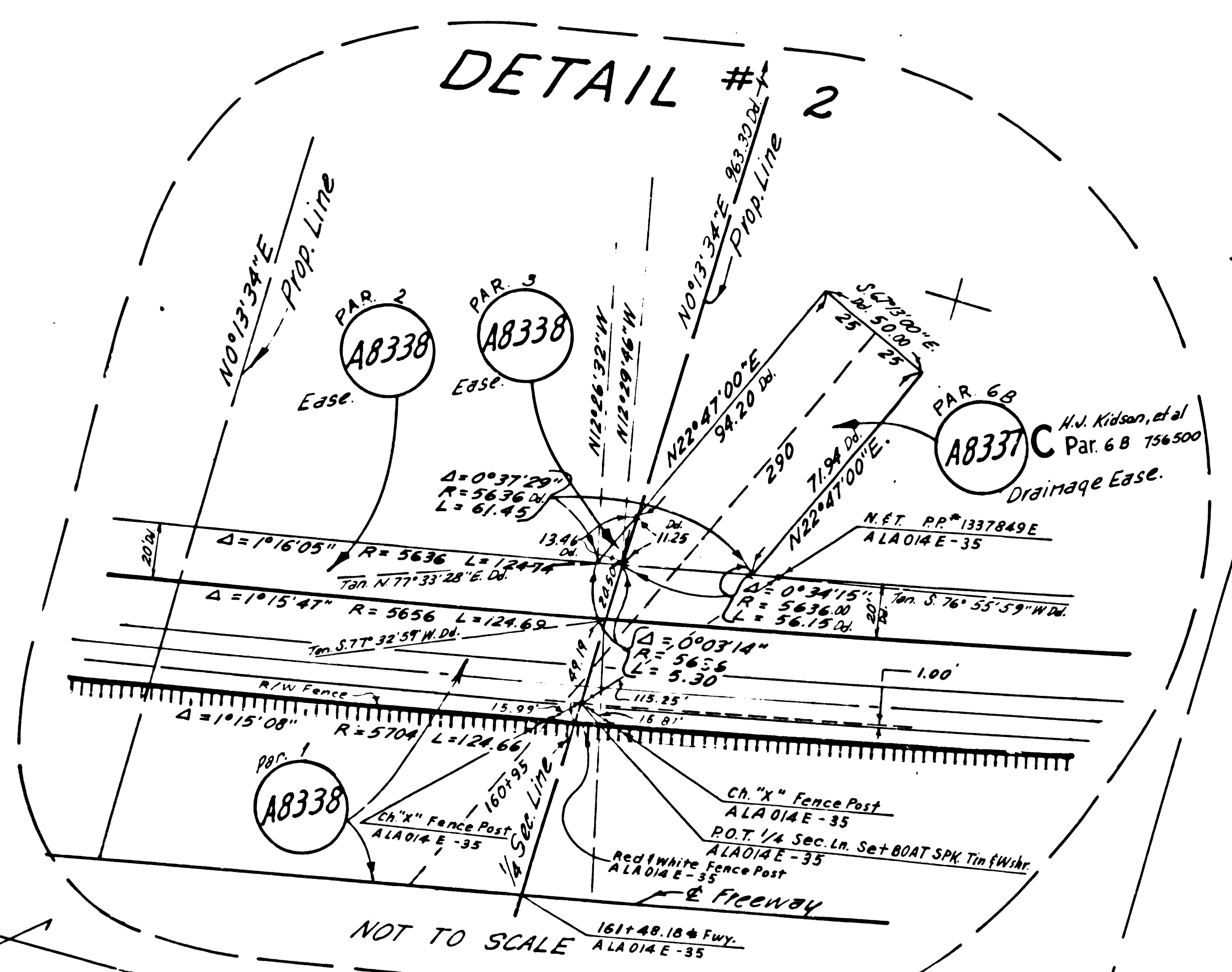
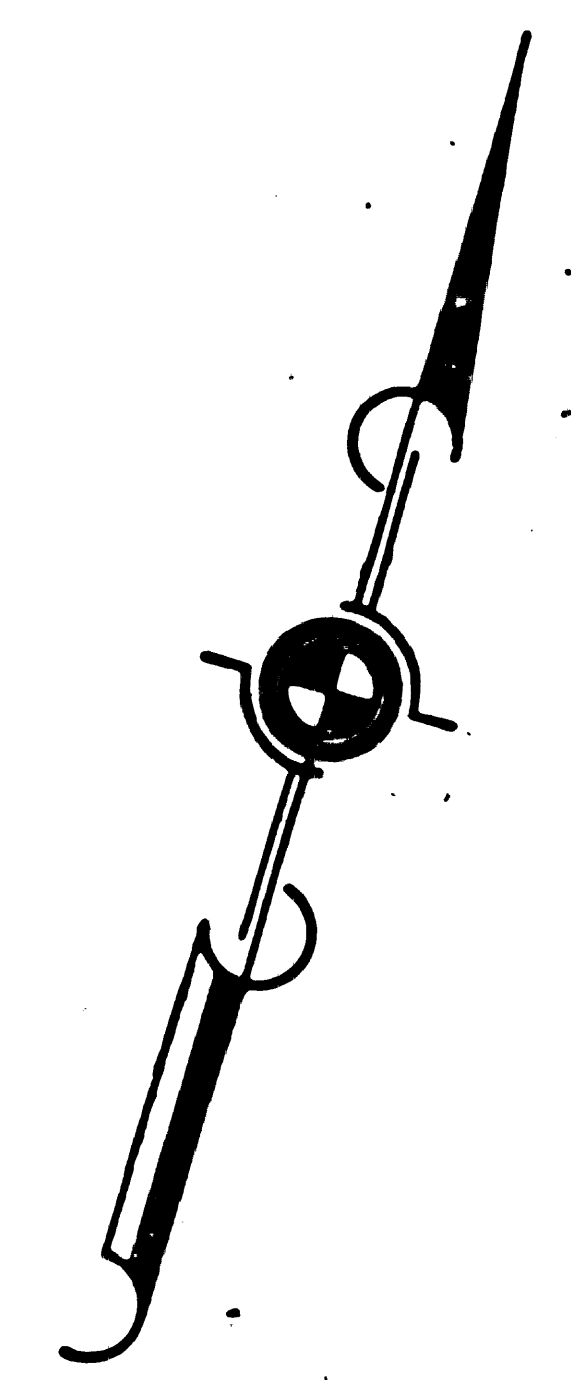
See Detail #2

LOS

F.M. 20283 A 3 OF B5

B. B. & M.

12 7
13 18
A
Ed. L.A. Co. Surv. 5th. Brass. Cor. Mon.
Nov. 7, 18, 19, 78 T Above Gr.
ALA 014 E-36



ANGELES

F.M. 20283 A 4 OF B5

T. 4 N. R. 14 W. S. B. B. &

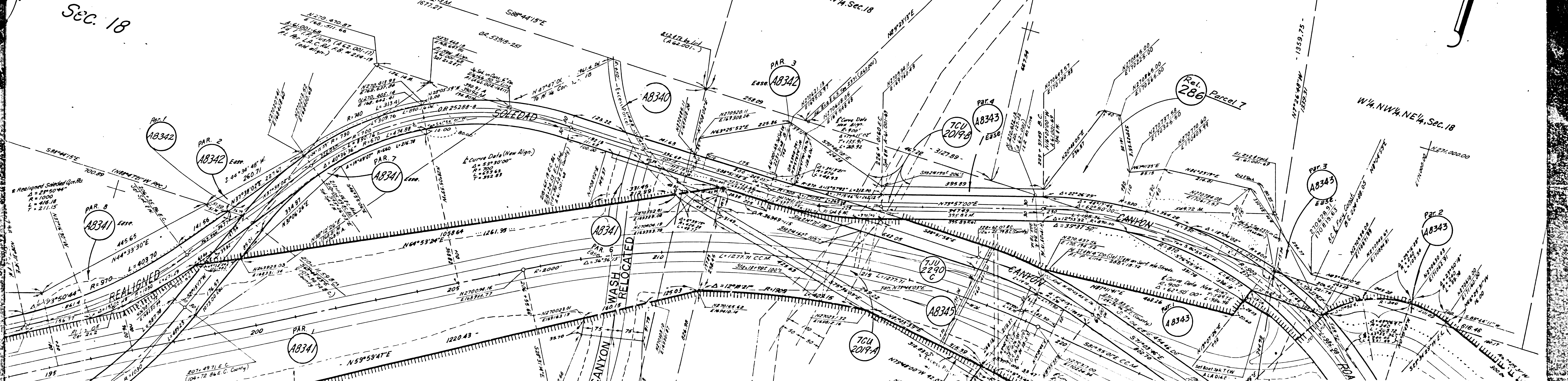
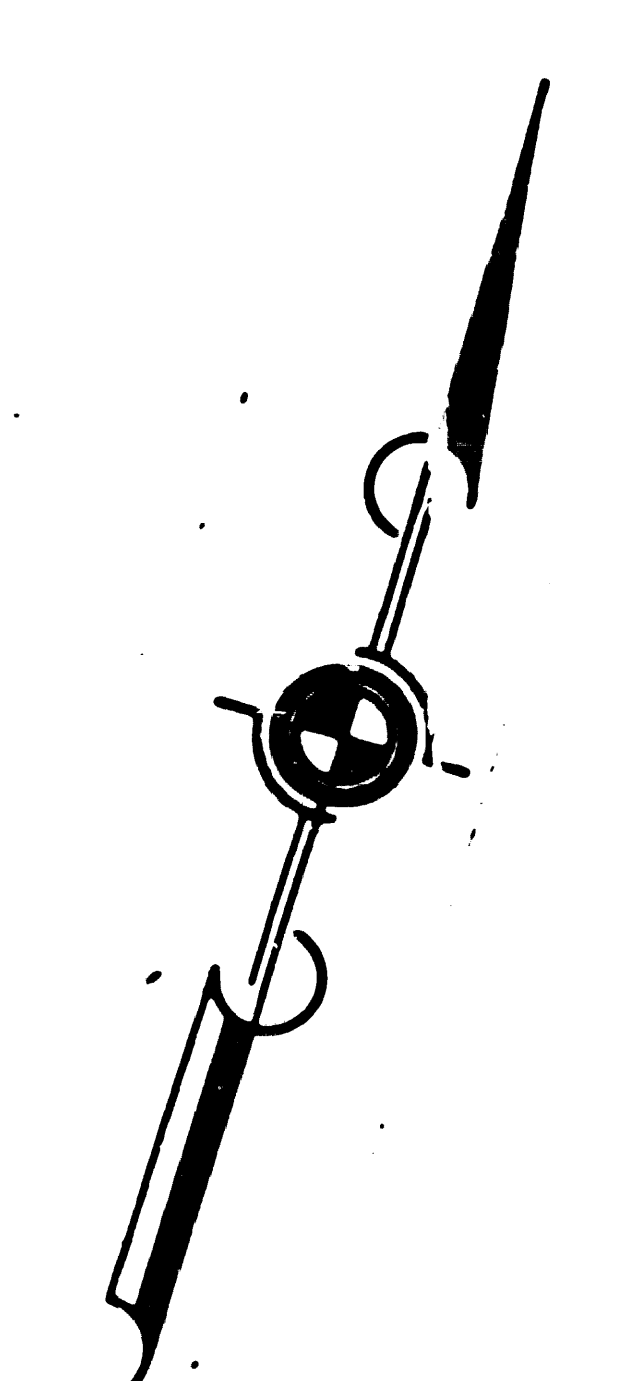
Lot 5
12 7
13 18
Fed. L.A. Co. Surv. 5th Brass Cop. Mon.
Mk'd 1, 1713, 18 Above Grd.
ALADINE-36

Fed. L.A. Co. Surv. 5th Brass Cop. Mon. 1, 1713, 18 Above Grd. ALADINE-37

Lot 6

Sec. 18

Sec. 14 W.

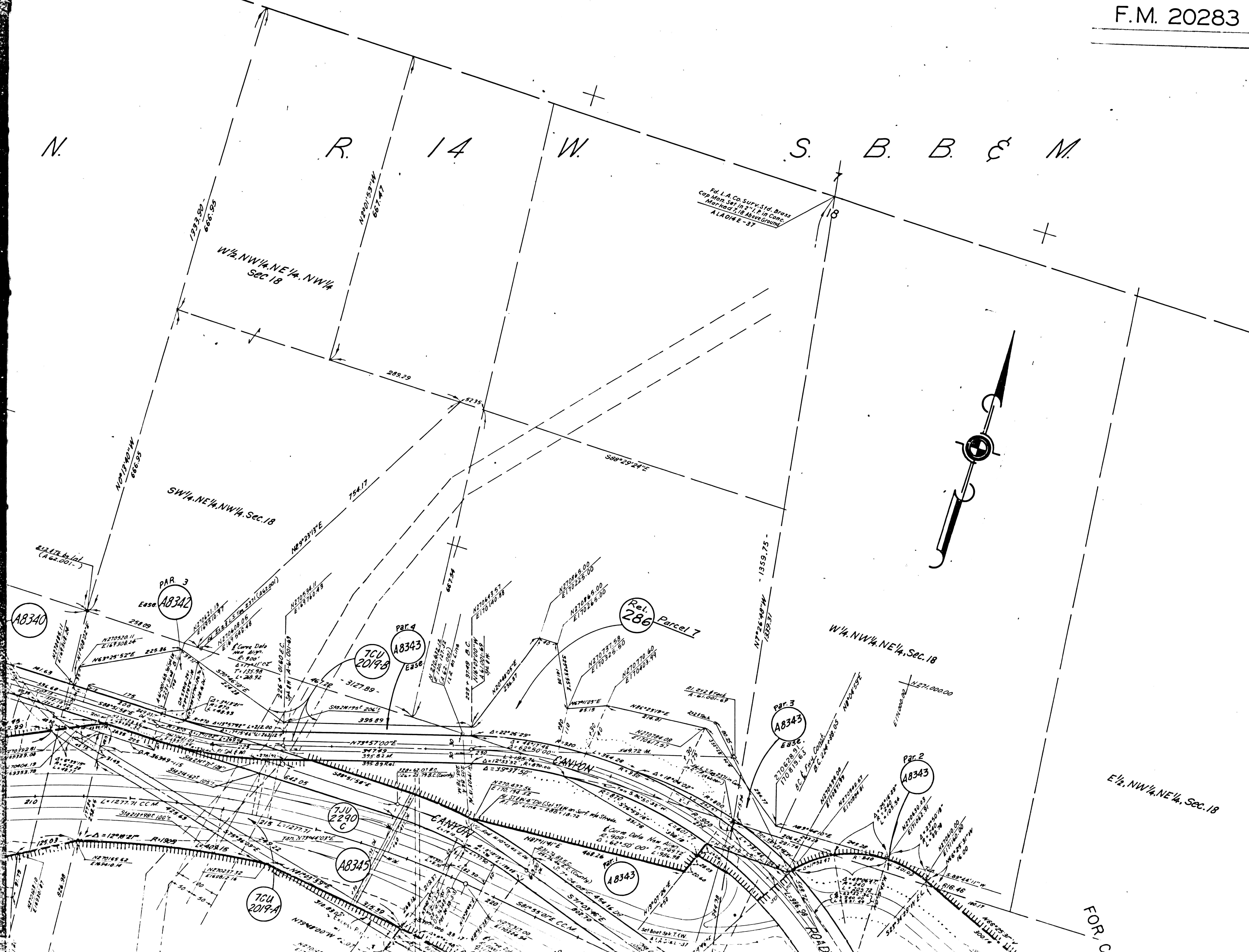


G E L L E ' S

F-1029

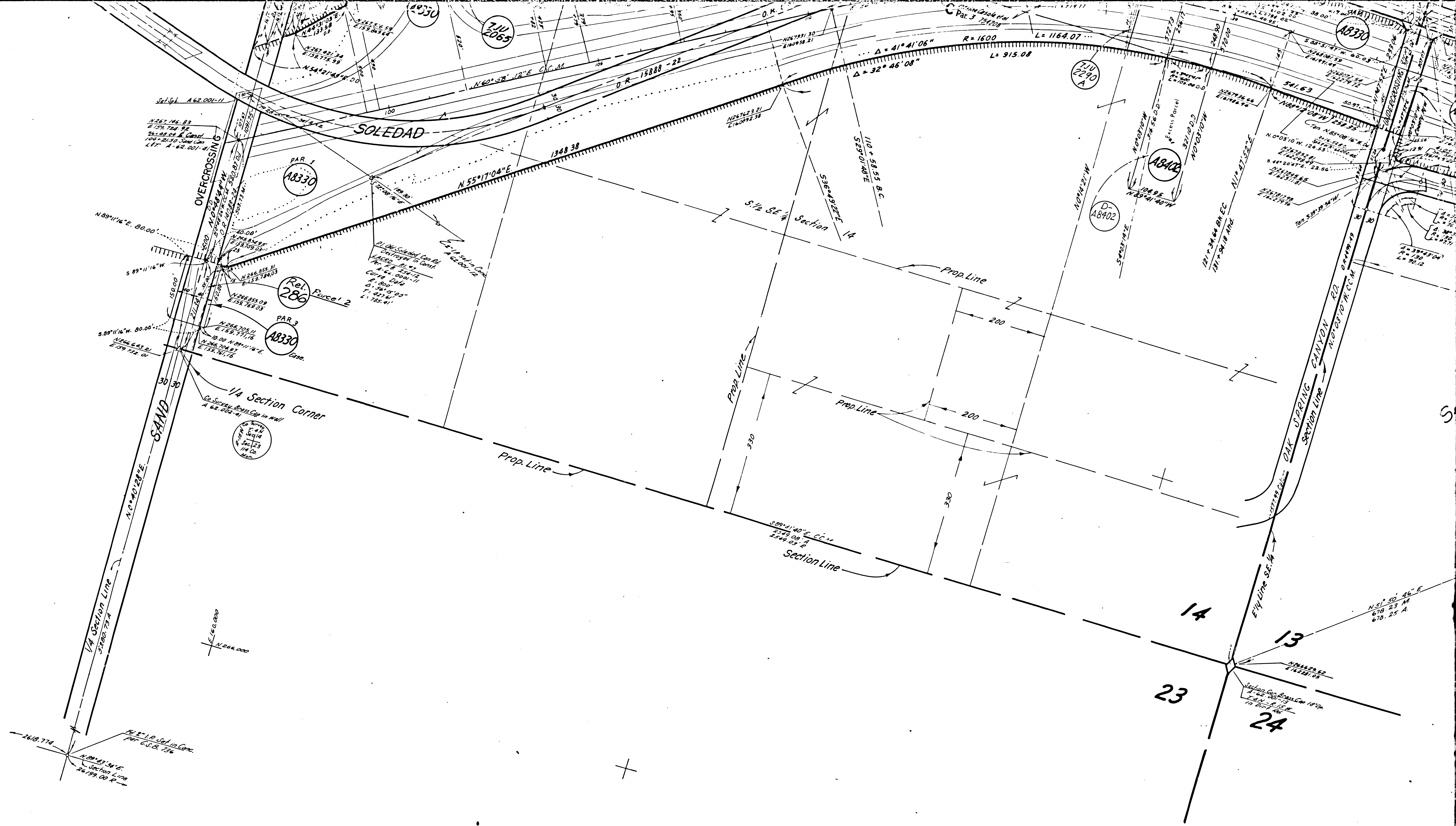
F.M. 20283 A 5 OF B5

N. R. 14 W. S. B. B. & M.

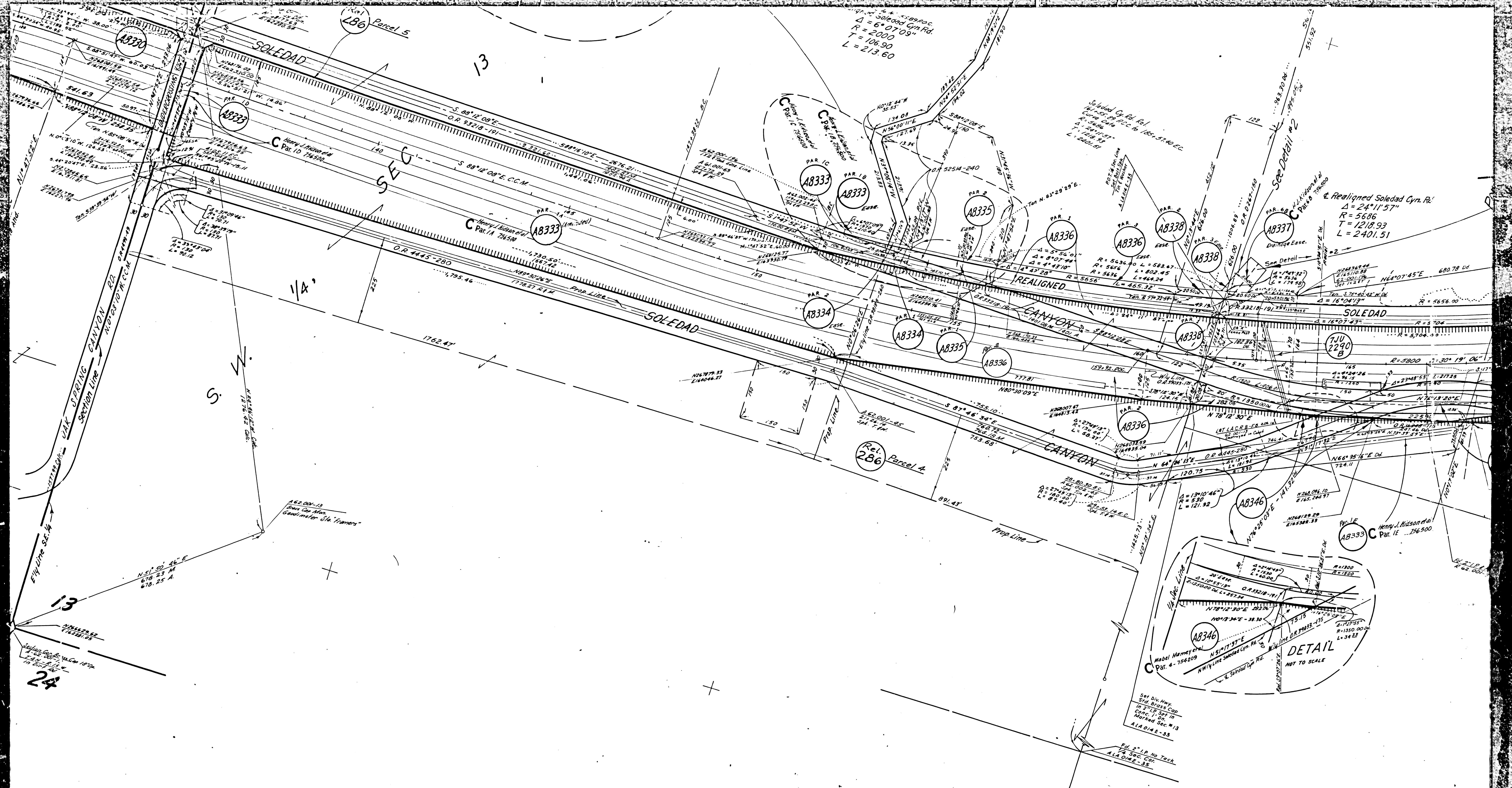


FOR CONTINUATION SEE MAP NO F-1060

FOR CONTINUATION SEE MAP NO.

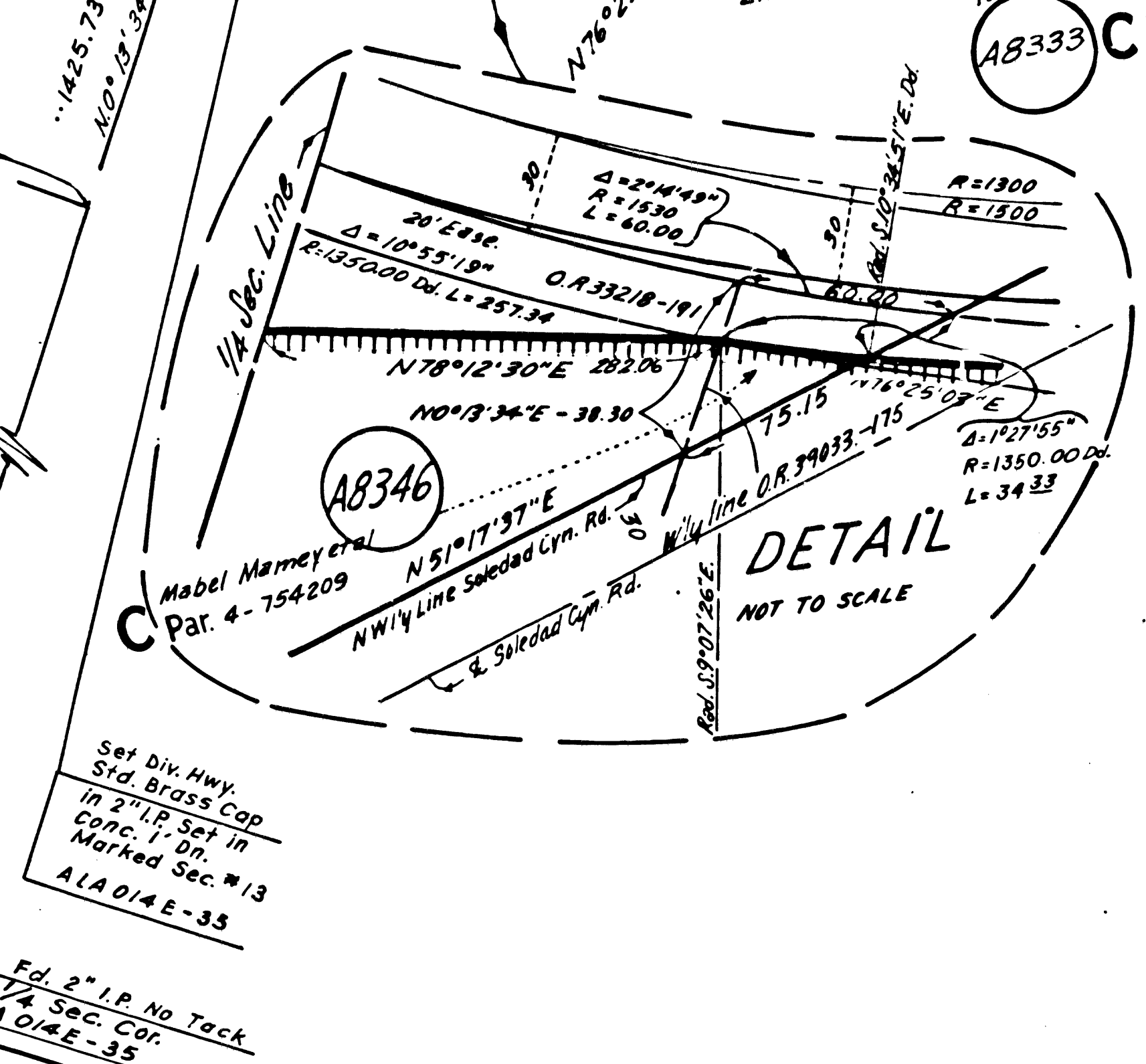


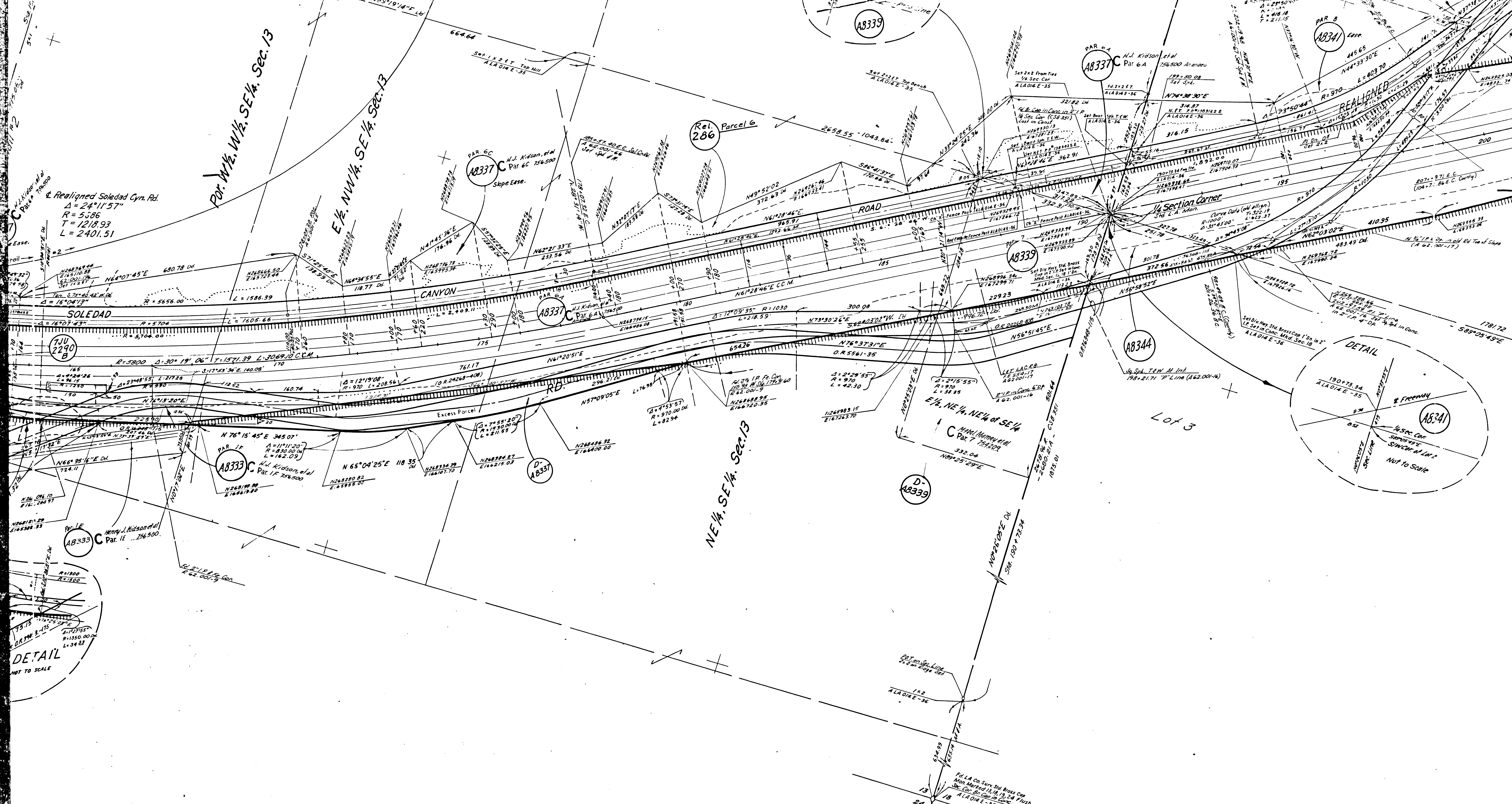
8330.1 Pizzini Casola et al 12-22-62 2-1678-602	8330.2 James O. Davis et ux 3-30-61 2-1712-587	8330.3 State of Calif. Edison Co. 1-12-61 2-1712-587	8330.4 State to Bernard Lewis & Morton Medway 8-3-65 2-3301-581
8330.5 Melvill Moore et ux 8-14-62 2-1712-587	8330.6 State to Pacific Tel & Tel Co. 8-14-62 2-1712-587	8330.7 State to A. Ethel Moore 11-16-63 2-2225-691	8330.8 Pacific Tel & Tel Co. 11-16-63 2-2225-691



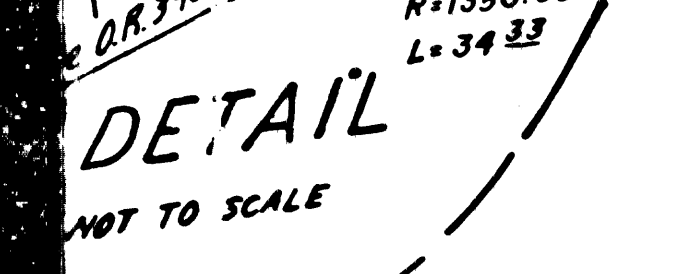
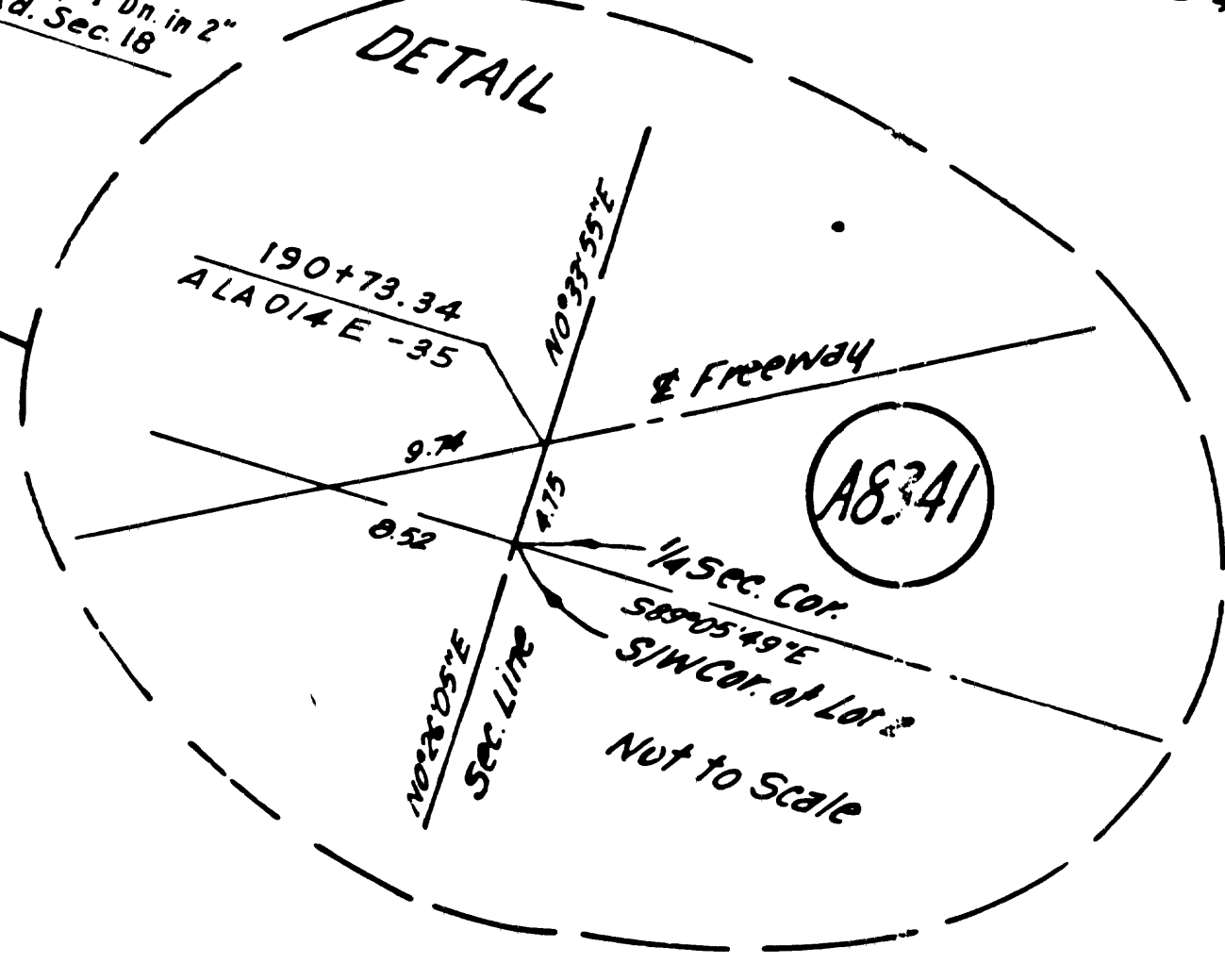
Parcels 2 thru 9
 State to Los Angeles County
 Parcel 1 on Map F1058
 Parcels 10, 11, 12 on Map F1060
 Parcels 13 & 14 on Map F1062

Parcel 10	Henry J. Wilson et al.	Parcel 11	Henry J. Wilson et al.	Parcel 12	Henry J. Wilson et al.	Parcel 13	Henry J. Wilson et al.	Parcel 14	Henry J. Wilson et al.
Parcel 15	Henry J. Wilson et al.	Parcel 16	Henry J. Wilson et al.	Parcel 17	Henry J. Wilson et al.	Parcel 18	Henry J. Wilson et al.	Parcel 19	Henry J. Wilson et al.
Parcel 20	Henry J. Wilson et al.	Parcel 21	Henry J. Wilson et al.	Parcel 22	Henry J. Wilson et al.	Parcel 23	Henry J. Wilson et al.	Parcel 24	Henry J. Wilson et al.

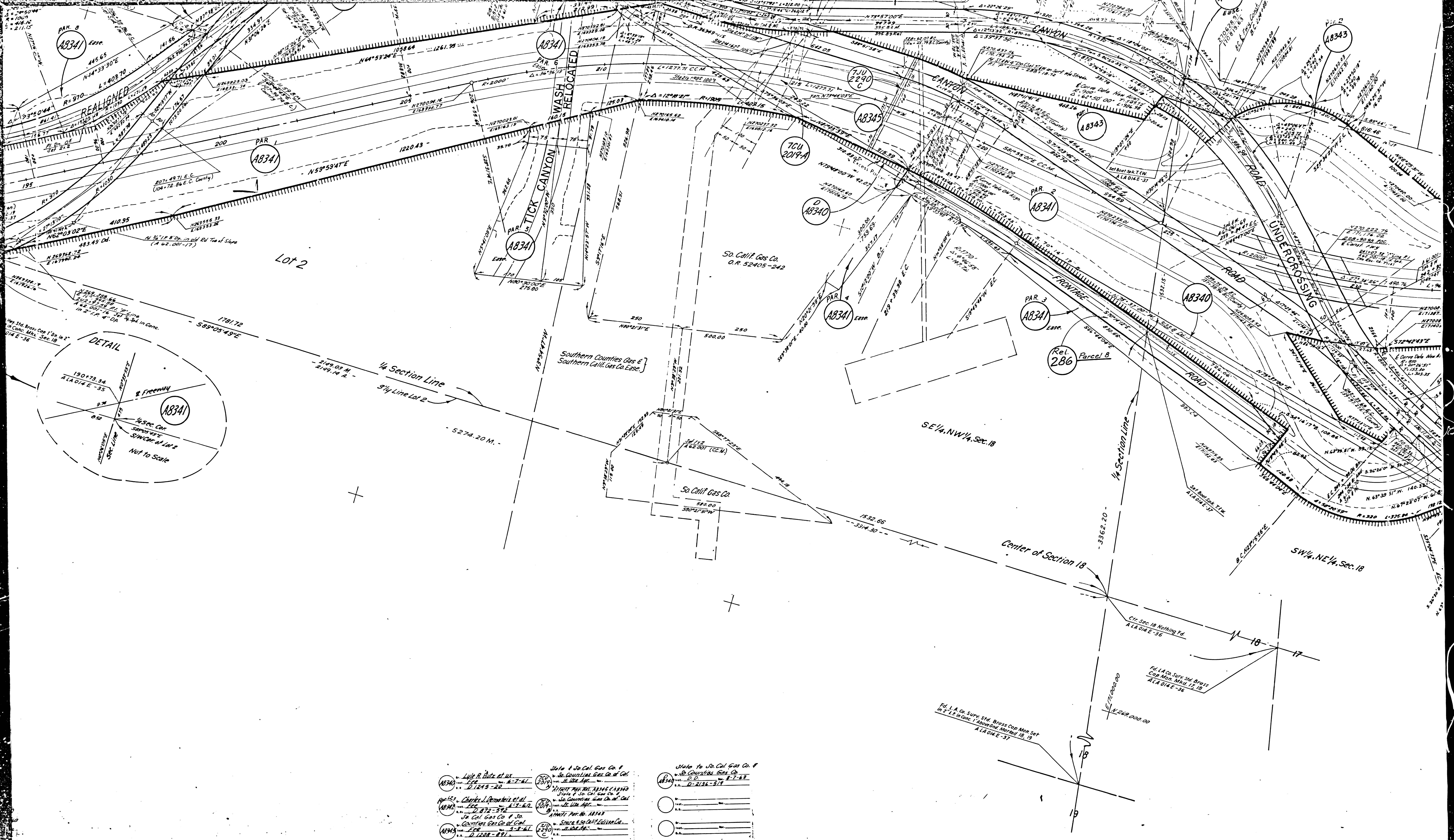




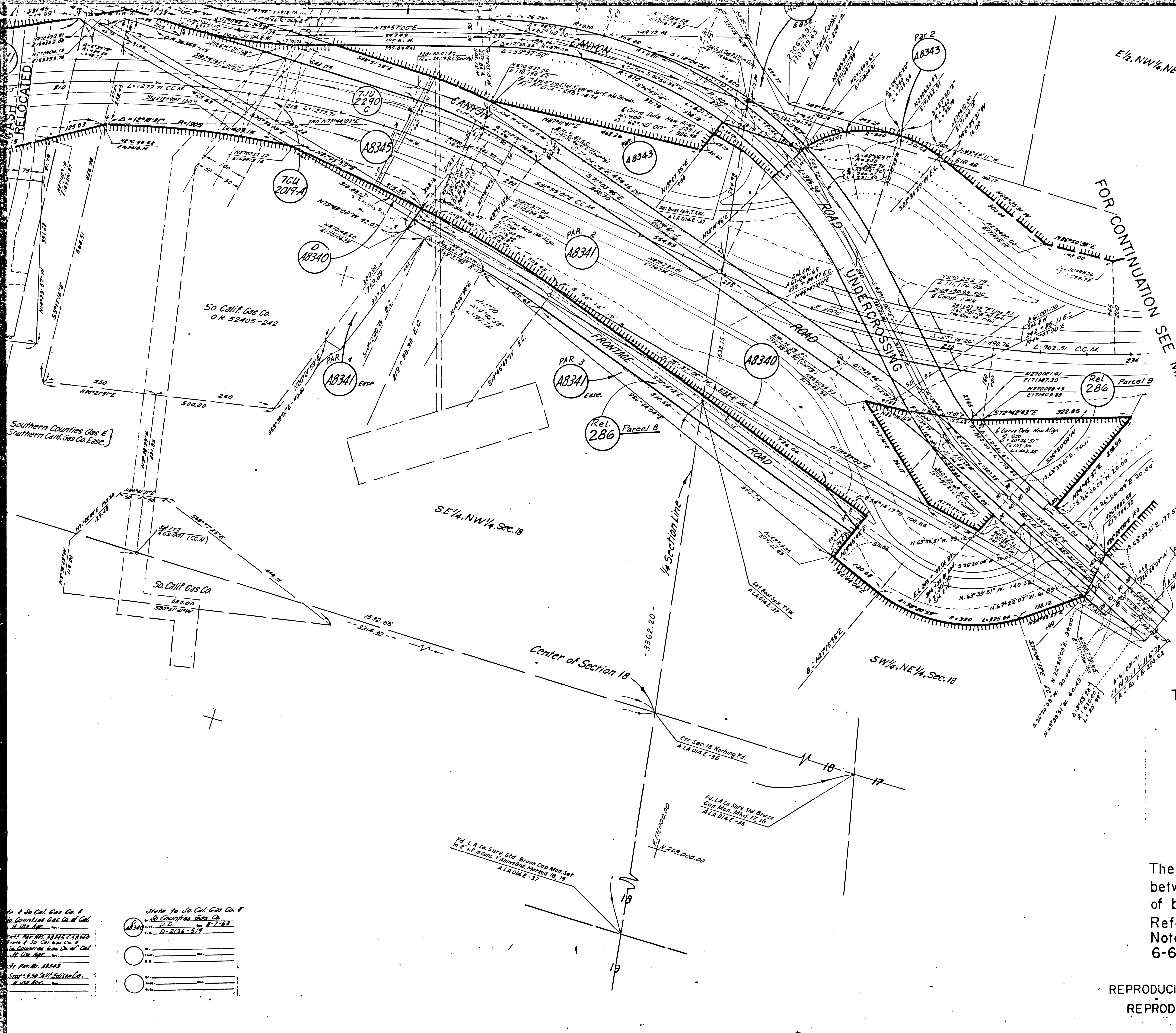
Realigned Soledad Cyn. Rd.
 $\Delta = 24^{\circ}11'57''$
 $R = 5586$
 $T = 1218.93$
 $L = 2401.51$



(A8339)	H.J. Kidson et al Pat 6 A 12/22/52 12/22/52	(A8340)	Ruth M. Quinn 12/22/52 12/22/52
(A8344)	Abel Murray et al 12/22/52 12/22/52	(A8341)	Estelle et al 12/22/52 12/22/52
(A8337)	Abel Murray et al 12/22/52 12/22/52	(A8333)	State of N.H. Mammey et al 12/22/52 12/22/52
(A8337)	Abel Murray et al 12/22/52 12/22/52	(A8337)	Robert M. Mammey et al 12/22/52 12/22/52



- | | | |
|---|---|---|
| State to So. Cal. Gas Co. #
18341 - Lyle R. Butts et al. - 8-7-61
18342 - Lyle R. Butts et al. - 8-7-61
18343 - Charles J. Pennington et al. - 8-7-61
18344 - So. Cal. Gas Co. # So. - 8-7-61
18345 - Southern Counties Gas Co. et al. - 8-7-61
18346 - So. Cal. Gas Co. # So. - 8-7-61
18347 - So. Cal. Gas Co. # So. - 8-7-61
18348 - So. Cal. Gas Co. # So. - 8-7-61
18349 - So. Cal. Gas Co. # So. - 8-7-61
18350 - So. Cal. Gas Co. # So. - 8-7-61 | State to So. Cal. Gas Co. #
18351 - So. Cal. Gas Co. # So. - 8-7-61
18352 - So. Cal. Gas Co. # So. - 8-7-61
18353 - So. Cal. Gas Co. # So. - 8-7-61
18354 - So. Cal. Gas Co. # So. - 8-7-61
18355 - So. Cal. Gas Co. # So. - 8-7-61
18356 - So. Cal. Gas Co. # So. - 8-7-61
18357 - So. Cal. Gas Co. # So. - 8-7-61
18358 - So. Cal. Gas Co. # So. - 8-7-61
18359 - So. Cal. Gas Co. # So. - 8-7-61
18360 - So. Cal. Gas Co. # So. - 8-7-61 | State to So. Cal. Gas Co. #
18361 - So. Cal. Gas Co. # So. - 8-7-61
18362 - So. Cal. Gas Co. # So. - 8-7-61
18363 - So. Cal. Gas Co. # So. - 8-7-61
18364 - So. Cal. Gas Co. # So. - 8-7-61
18365 - So. Cal. Gas Co. # So. - 8-7-61
18366 - So. Cal. Gas Co. # So. - 8-7-61
18367 - So. Cal. Gas Co. # So. - 8-7-61
18368 - So. Cal. Gas Co. # So. - 8-7-61
18369 - So. Cal. Gas Co. # So. - 8-7-61
18370 - So. Cal. Gas Co. # So. - 8-7-61 |
|---|---|---|

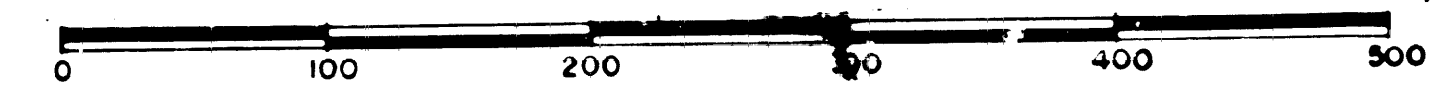


1. So. Cal. Gas Co. &
 Southern Counties Gas Co. of Cal.
 2. D.D. 8-7-63
 3. D-2134-514
 4. So. Cal. Gas Co. &
 Southern Counties Gas Co. of Cal.
 5. L.A. Co. Sur. & Br. Co. Mon. Set
 6. L.A. Co. Sur. & Br. Co. Mon. Set
 7. L.A. Co. Sur. & Br. Co. Mon. Set
 8. L.A. Co. Sur. & Br. Co. Mon. Set
 9. L.A. Co. Sur. & Br. Co. Mon. Set
 10. L.A. Co. Sur. & Br. Co. Mon. Set

FOR CONTINUATION SEE MAP NO. F-1060

FOR CONTINUATION SEE MAP NO. F-

STATE OF CALIFORNIA
 HIGHWAY TRANSPORTATION AGENCY
 DEPARTMENT OF PUBLIC WORKS
 DIVISION OF HIGHWAYS
ROAD VII- LA -14
 (Old 7-23-C)
RIGHT OF WAY MAP
 SAND CANYON RD. O.C.(PM 33.42)
 TO SOLEDAD CANYON RD. U.C. (PM 35.73)



COORDINATES SHOWN ARE FOR INTERNAL USE OF THE DIVISION OF HIGHWAYS AND ARE TO BE USED FOR REFERENCE ONLY

The Bearing N.00°03'10"W. along the Section Line between Sections 13 and 14 was taken as the basis of bearing for this map.
 Reference Notes for this sheet were taken from Field Notes A 62.001; C.C.M. 62.1 Rev.9-63 and 62.2 Rev. 6-60; & Field Notes A LA 014 E

REPRODUCIBLE COPY FILED WITH L.A. CO. SURVEYOR 2-66
 REPRODUCIBLE COPY FILED WITH L.A. CO. SURVEYOR 7-64

F-1059

F.M. 20283 B 5 OF B 5

40-2134