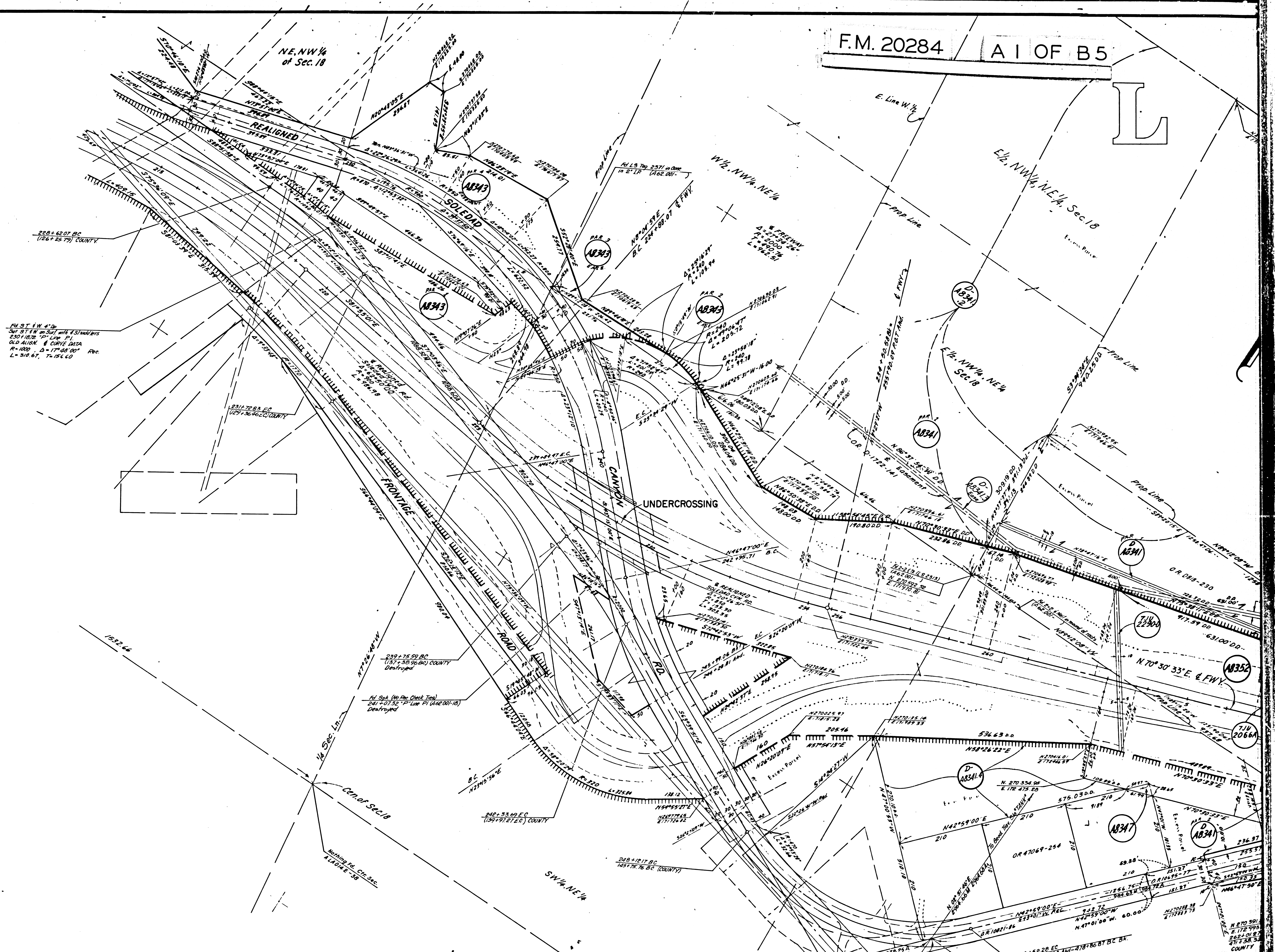


F.M. 20284

A 1 OF B 5

L



PD 37 1/2 W 4' D
 Set 37 1/2 W on Surf with 4 Standings
 230+102.22 TP Line PI
 OLD ALIGN. & CURVE DATA
 R=1000, Δ=17°28'00" Arc.
 L=310.67, T=194.60

231+72.63 EC
 (127+36.96) COUNTY

241+01.32 TP Line PI (A&R 01-10)
 Destroyed

240+33.00 EC
 (134+91.81) COUNTY

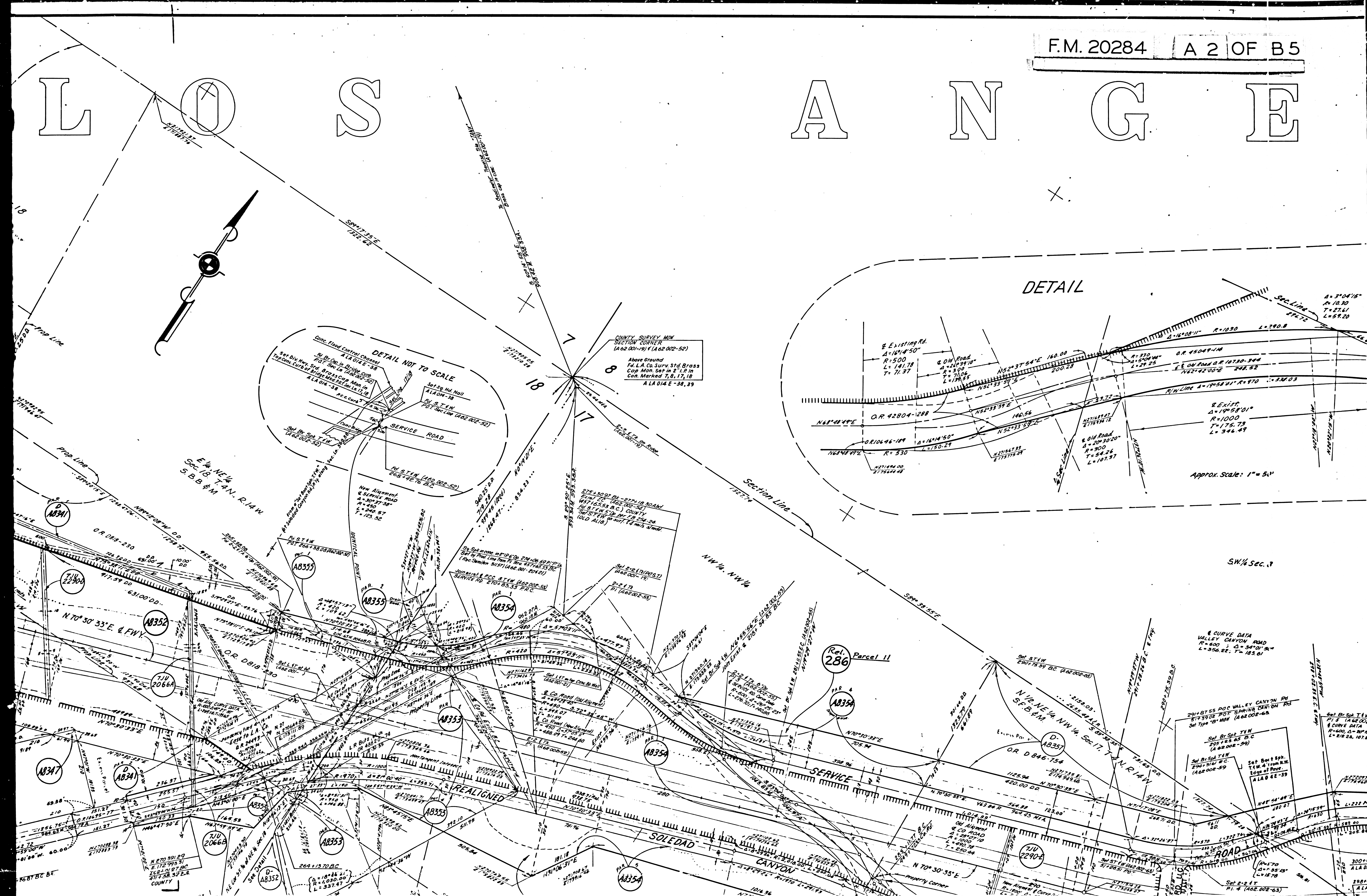
240+18.17 BC
 (134+78.76) COUNTY

238+18.17 BC
 (134+78.76) COUNTY

236+91.17 BC
 (134+78.76) COUNTY

1:2000
 N 289.000

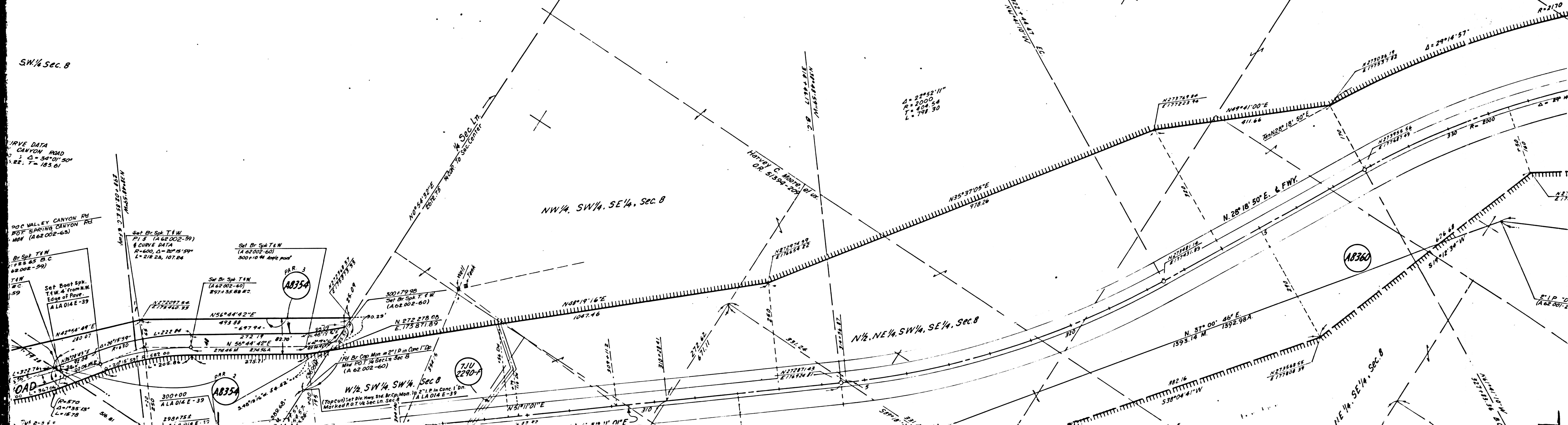
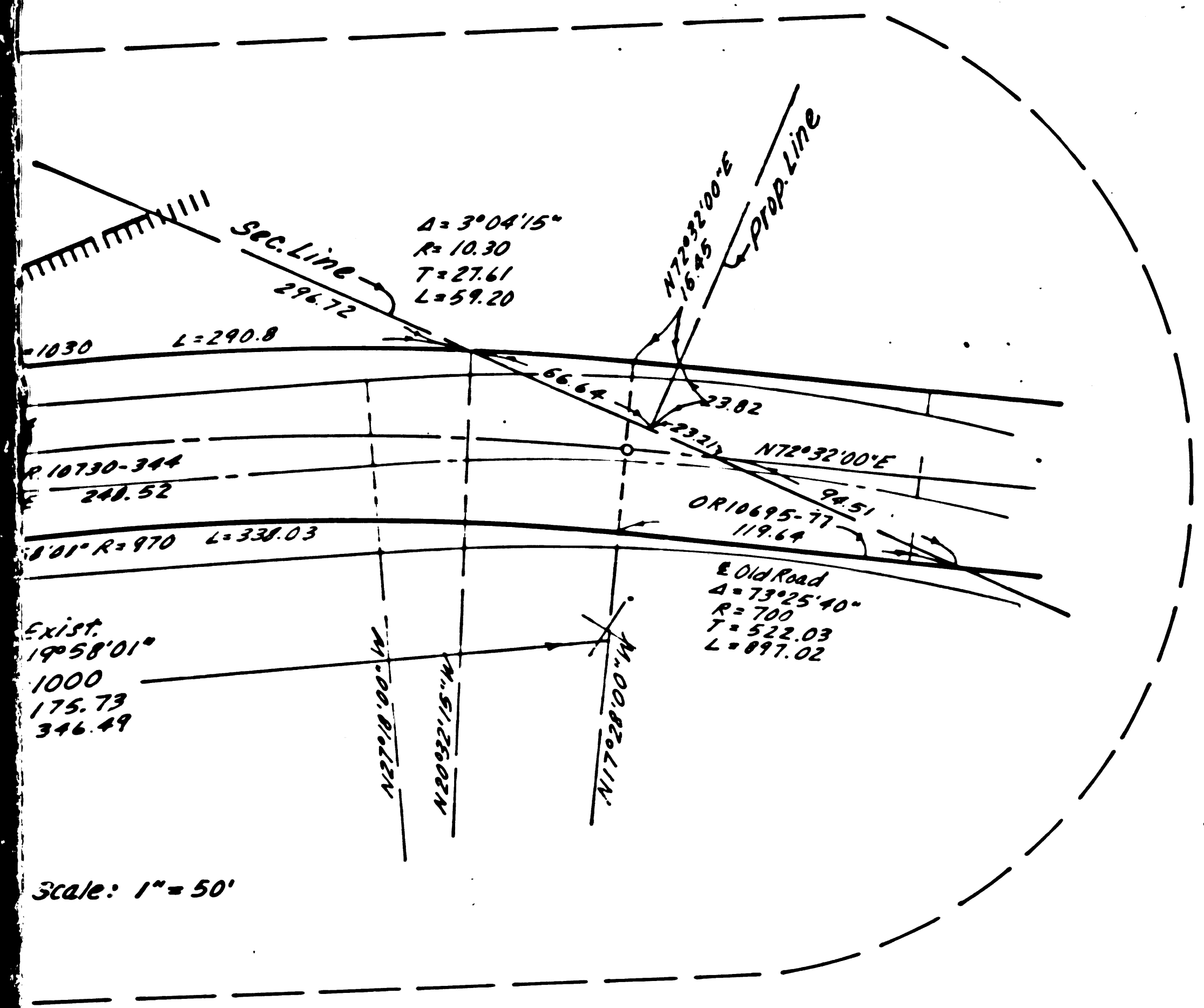
LOS ANGELES



E L E S C O U

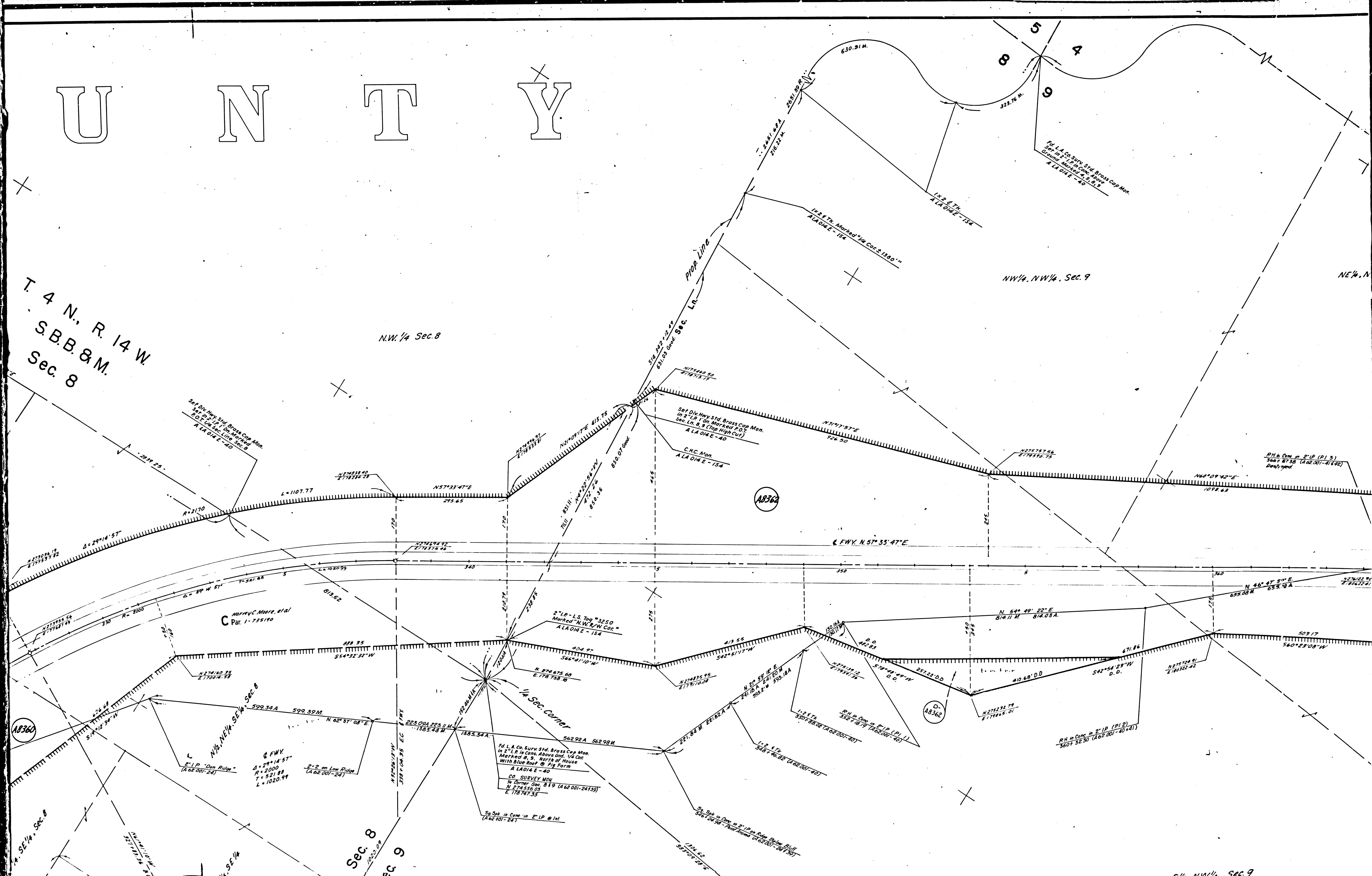
F.M. 20284 A 3 OF B 5

T. 4 N., R. 14 W.
S.B.B. & M.
Sec. 8



U N T Y

T. 4 N., R. 14 W.
S.B.B. & M.
Sec. 8



N.W. 1/4 Sec. 8

NW 1/4, NW 1/4, Sec. 9

NE 1/4, N

(A836)

(A836)

(D-
A836)

Sec. 8

Sec. 9

S 1/2, NW 1/4, Sec. 9

1/4 SEC. CORNER
 Pd. L. A. Co. Surv. Std. Brass Cap Mon.
 in 2" I.P. in Conc. Above Gnd. V4 Cor.
 Marked Q. 9. North of House
 With Blue Roof @ Pig Farm
 A LA 014 E - 40
 CO. SURVEY MON.
 in Corner Sec. 8 19 (A 62 001-24159)
 N. 174 556.05
 E. 178 747.35

FWY.
 Δ = 29° 14' 57"
 R = 2000
 T = 521.89
 L = 1020.99

2" I.P. "On Ridge"
 (A 62 001-24)

2" x 2 on Low Ridge
 (A 62 001-24)

So. Spt. in Conc. in 2" I.P. @ Int.
 (A 62 001-24)

So. Spt. in Conc. in 2" I.P. on Ridge Below Bluff
 (A 62 001-24)

HARMY C. MOORE, et al
 Par. 1-735180

Set Div. Hwy. Std. Brass Cap Mon.
 in 2" I.P. in Conc. Above Gnd.
 Marked Q. 8. North of House
 With Blue Roof @ Pig Farm
 A LA 014 E - 40

Set Div. Hwy. Std. Brass Cap Mon.
 in 2" I.P. in Conc. Above Gnd.
 Marked Q. 9 (Top High Cut)
 A LA 014 E - 40

C.N.C. Mon.
 A LA 014 E - 154

R.H. in Conc. in 2" I.P. (P. 1)
 360° 47' 35" (A 62 001-41492)
 D. 41.79

R.H. in Conc. in 2" I.P. (P. 2)
 360° 52' 50" (A 62 001-40441)

R.H. in Conc. in 2" I.P. (P. 1)
 360° 47' 35" (A 62 001-41492)

R.H. in Conc. in 2" I.P. (P. 1)
 360° 47' 35" (A 62 001-41492)

R.H. in Conc. in 2" I.P. (P. 1)
 360° 47' 35" (A 62 001-41492)

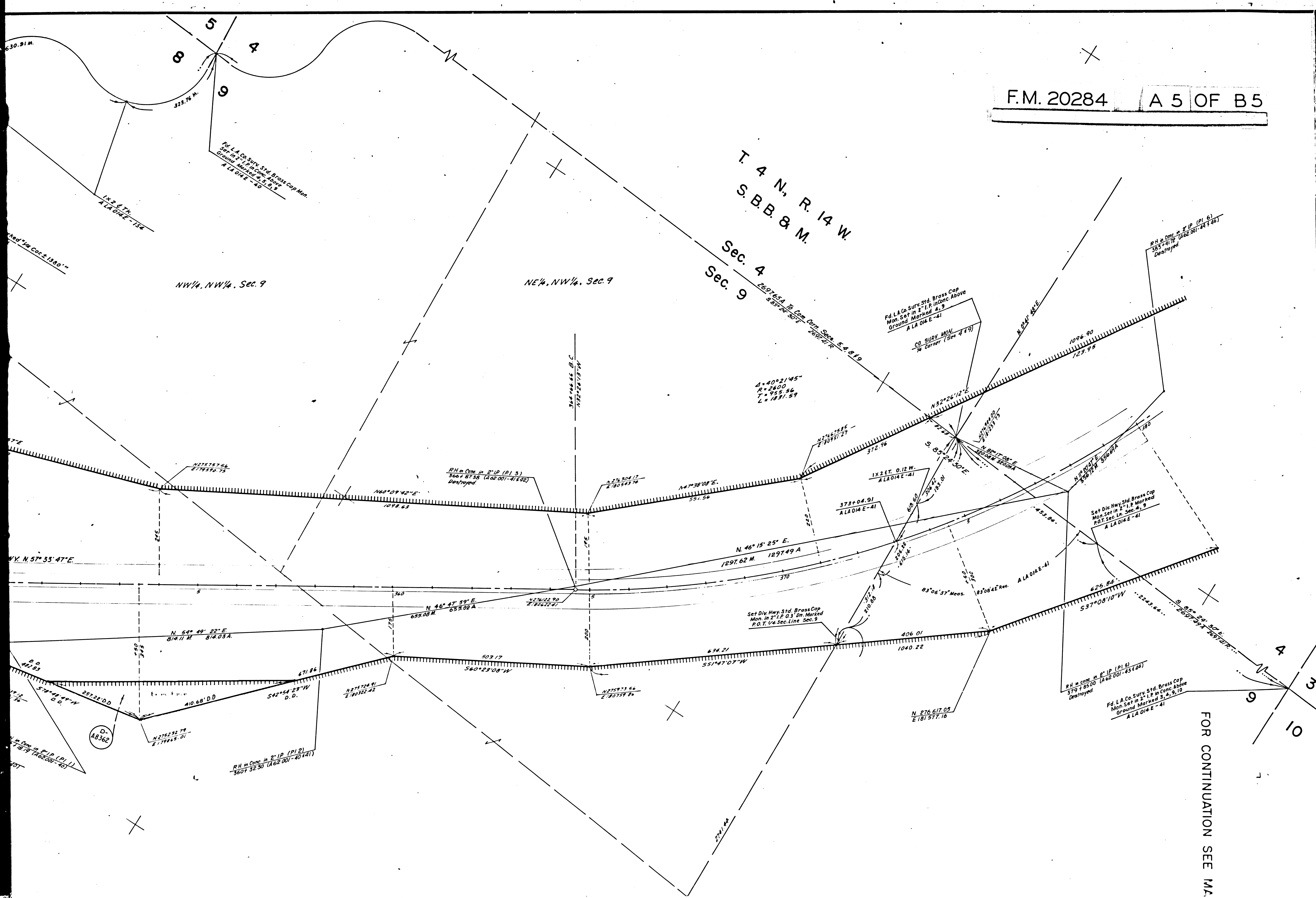
F.M. 20284 A 5 OF B 5

T. 4 N., R. 14 W.
S. B. B. & M.

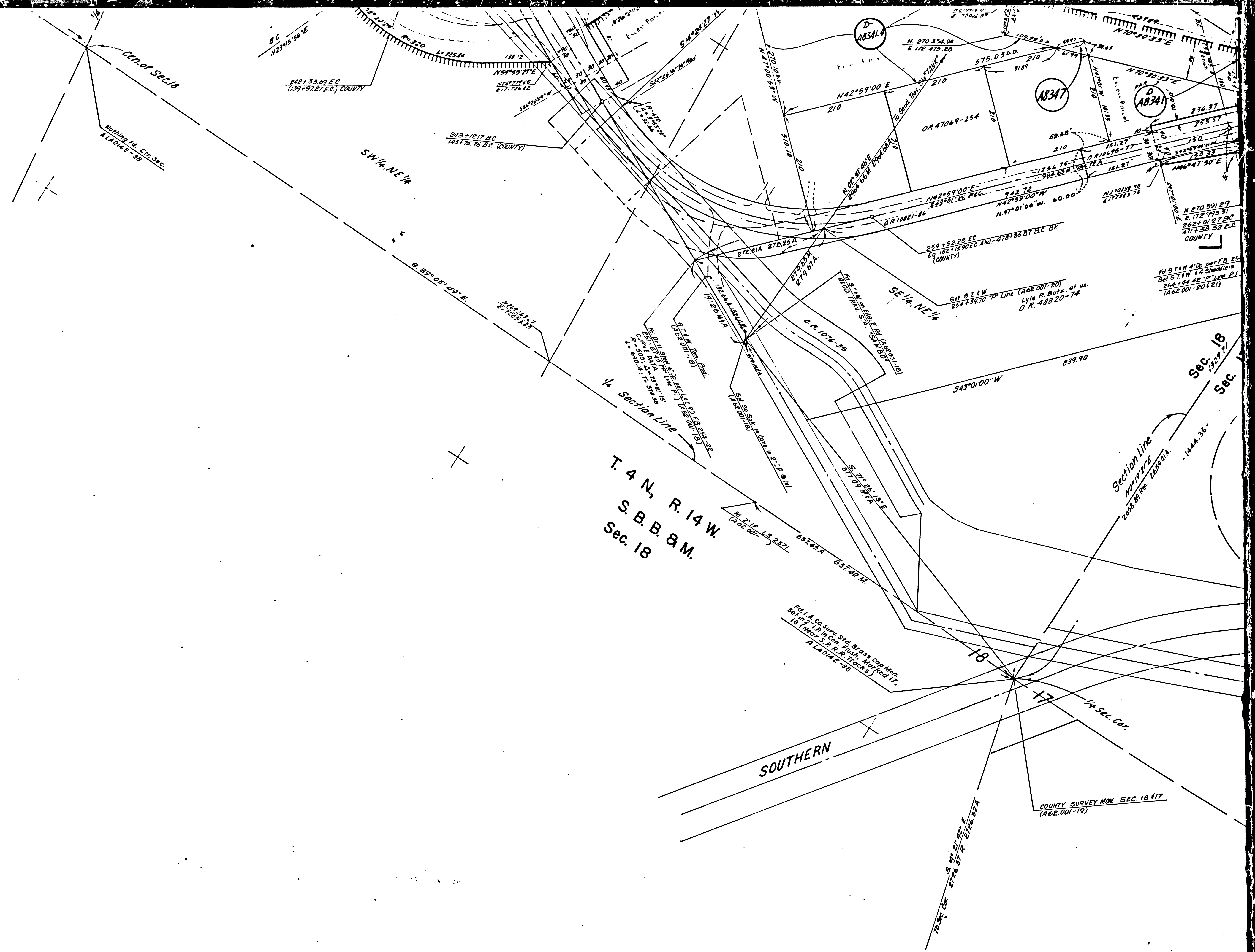
Sec. 4
Sec. 9

NW 1/4, NW 1/4, Sec. 9

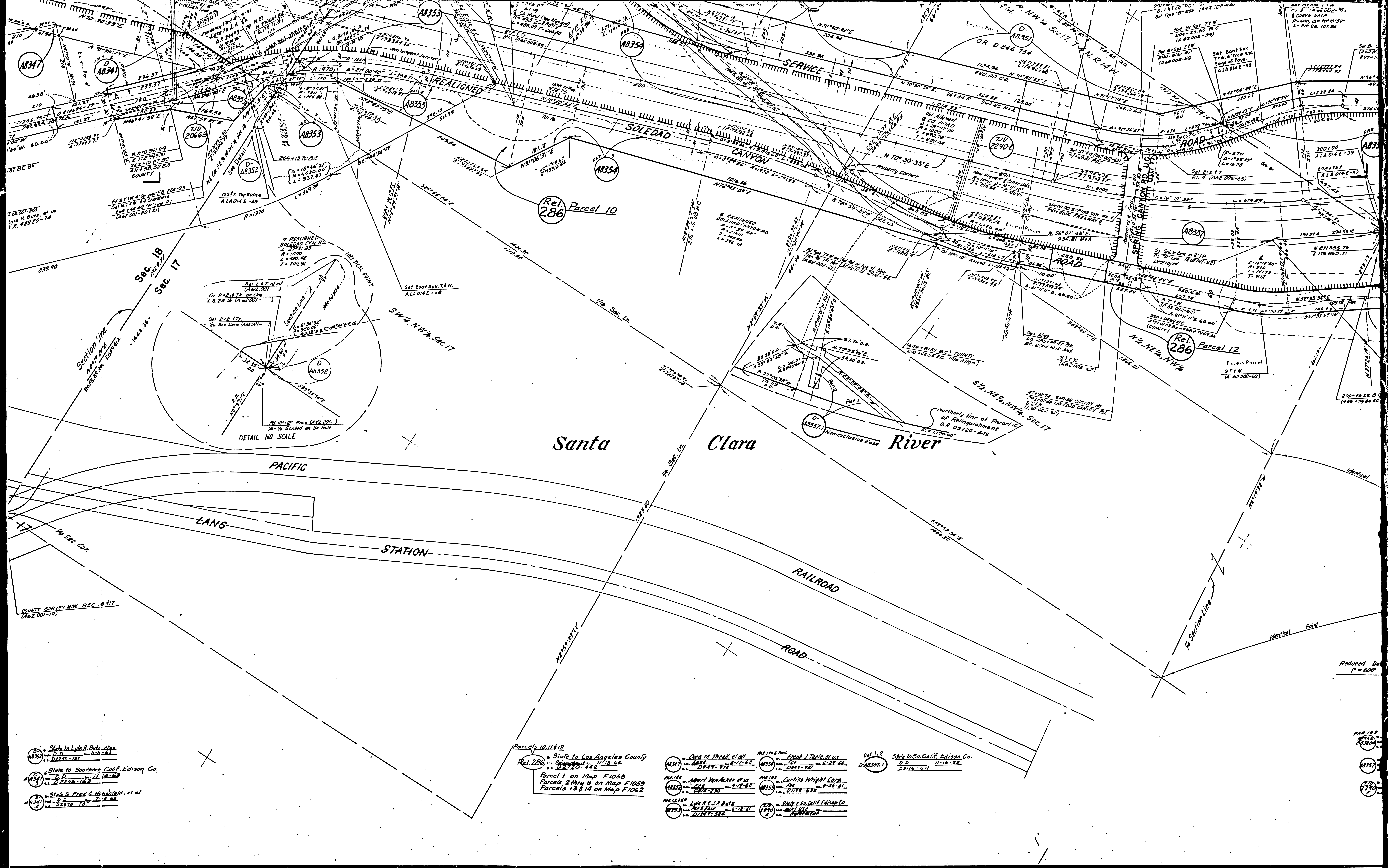
NE 1/4, NW 1/4, Sec. 9



FOR CONTINUATION SEE MAP



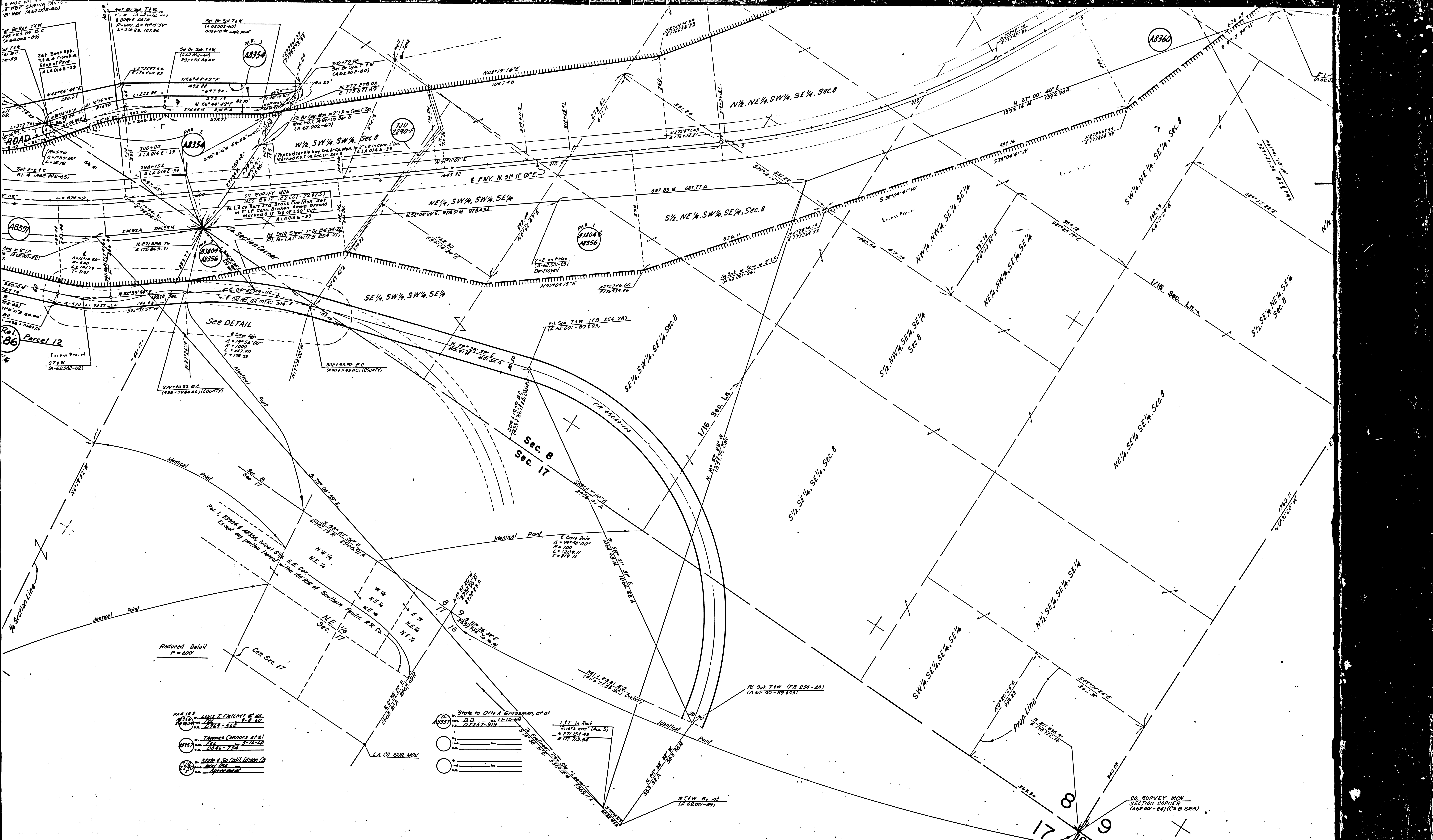
- 4341
 A.M. QUINN
 D.D. 2-28-60
 D. 925-222
- 4342
 State to Pacific Tel. & Tel. Co.
 D.D. 11-14-63
 D. 2255-707
- 4343
 State to Southern Calif. Edison Co.
 D.D. 11-14-63
 D. 2256-763
- 4344
 State to Howard S. Martin
 D.D. 3-11-68
 D. 2291-67
- 4345
 State to Fred C. Hahnfeldt, et al
 D.D. 7-15-68
 D. 2292-787



State to Lytle R. Burt et al
 D. 111
 11-18-54
 State to Southern Calif. Edison Co.
 D. 111
 11-18-54
 State to Fred C. Hochfeld, et al
 D. 111
 11-18-54

Parcels 10, 11 & 12
 Rel. 286
 State to Los Angeles County
 11-18-54
 Parcel 1 on Map F1058
 Parcels 2 thru 9 on Map F1059
 Parcels 13 & 14 on Map F1062

D. 111 11-18-54 State to Lytle R. Burt et al D. 111 11-18-54	D. 111 11-18-54 State to Southern Calif. Edison Co. D. 111 11-18-54	D. 111 11-18-54 State to Fred C. Hochfeld, et al D. 111 11-18-54	D. 111 11-18-54 State to Los Angeles County 11-18-54	D. 111 11-18-54 State to Lytle R. Burt et al D. 111 11-18-54	D. 111 11-18-54 State to Southern Calif. Edison Co. D. 111 11-18-54
--	---	--	---	--	---



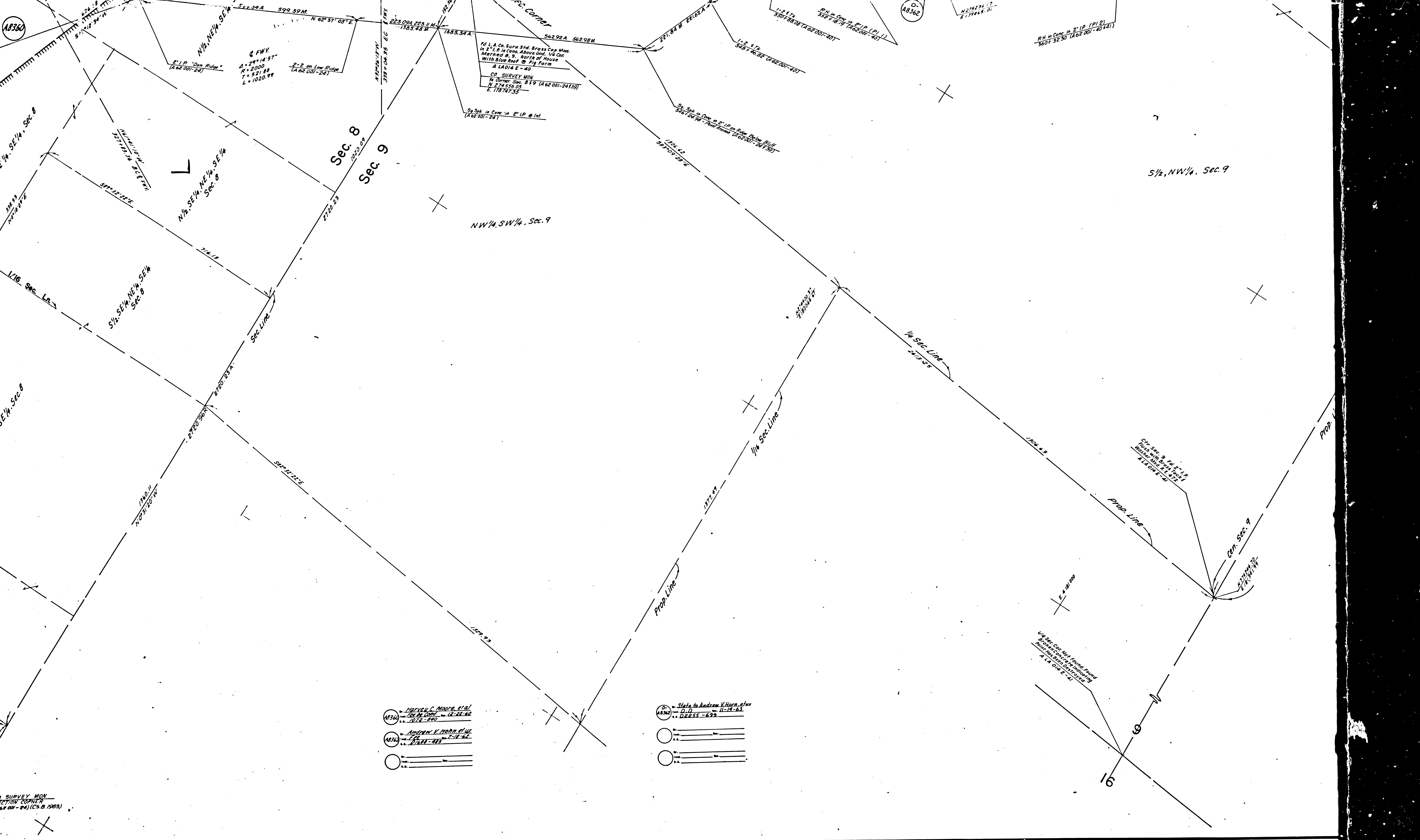
Reduced Detail
1" = 600'

- PAR 122 Louis J. Fitcher et al.
 (A 62-002-63)
 (A 62-002-59)
 (A 62-002-60)
 (A 62-002-61)
 (A 62-002-62)
 (A 62-002-63)
 (A 62-002-64)
 (A 62-002-65)
 (A 62-002-66)
 (A 62-002-67)
 (A 62-002-68)
 (A 62-002-69)
 (A 62-002-70)
 (A 62-002-71)
 (A 62-002-72)
 (A 62-002-73)
 (A 62-002-74)
 (A 62-002-75)
 (A 62-002-76)
 (A 62-002-77)
 (A 62-002-78)
 (A 62-002-79)
 (A 62-002-80)

- State to Otto A. Grossman, et al.
 (A 62-001-312)
 (A 62-001-313)
 (A 62-001-314)
 (A 62-001-315)
 (A 62-001-316)
 (A 62-001-317)
 (A 62-001-318)
 (A 62-001-319)
 (A 62-001-320)
 (A 62-001-321)
 (A 62-001-322)
 (A 62-001-323)
 (A 62-001-324)
 (A 62-001-325)
 (A 62-001-326)
 (A 62-001-327)
 (A 62-001-328)
 (A 62-001-329)
 (A 62-001-330)

LIT in Rock
 Rivets end (Aug. 3)
 N 87° 15' 43"
 E 177° 13' 34"

CO SURVEY MON
 SECTION COMPILER
 (A 62-00-24) (C.S.B. 1983)



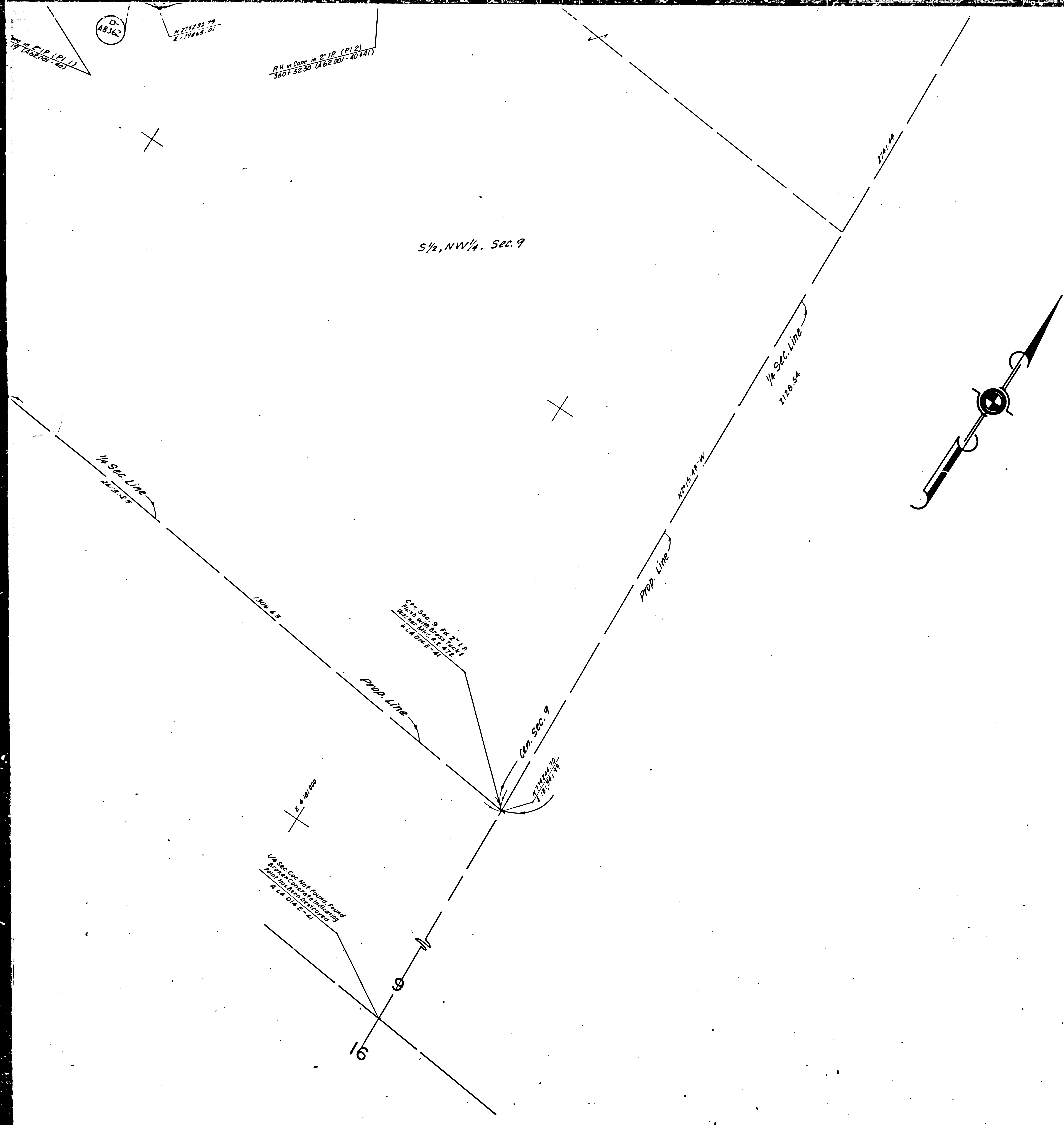
0 SURVEY MON
SECTION CORNER
168 001-24 (C.S.B. 1903)

(A) Harvey C. Moore et al
 18360
 12-22-60
 18363
 Andrew V. Horn et al
 12-22-60
 18364
 12-22-60

(B) State to Andrew V. Horn et al
 18362
 D.D.
 11-14-63
 DE225-699

CR CONTINUATION SEE MAP NO F-1061

10



STATE OF CALIFORNIA
 HIGHWAY TRANSPORTATION AGENCY
 DEPARTMENT OF PUBLIC WORKS
 DIVISION OF HIGHWAYS

ROAD: 7-LA-14
 (Old 7-LA-23-C)

RIGHT OF WAY MAP
 SOLEDAD CANYON RD. UNDER XING. (PM 35.73)
 TO
 SEC. LINE SEC. 4/9, T.4N., R.14W, S.B.B.&M. (PM 38.11)



COORDINATES SHOWN ARE FOR INTERNAL USE OF THE DIVISION OF HIGHWAYS AND ARE TO BE USED FOR REFERENCE ONLY

SECTION LINE BETWEEN SECTION 17 & 18 N. 00° 19' 21" E. WAS TAKEN AS A BASIS OF BEARING FOR THIS SHEET.

REFERENCE NOTES FOR THIS SHEET WERE TAKEN FROM FIELD NOTES A62.001 & A62.002 & CCM. 62.2 & 62.3, & FIELD NOTES ALA 014E - 38/41

REPRODUCIBLE COPY FILED WITH L.A. CO. SURVEYOR: 10-64
 REPRODUCIBLE COPY REFILED WITH L.A. CO. SURVEYOR: 2-66

F-1060

REV 21/5

49-2234