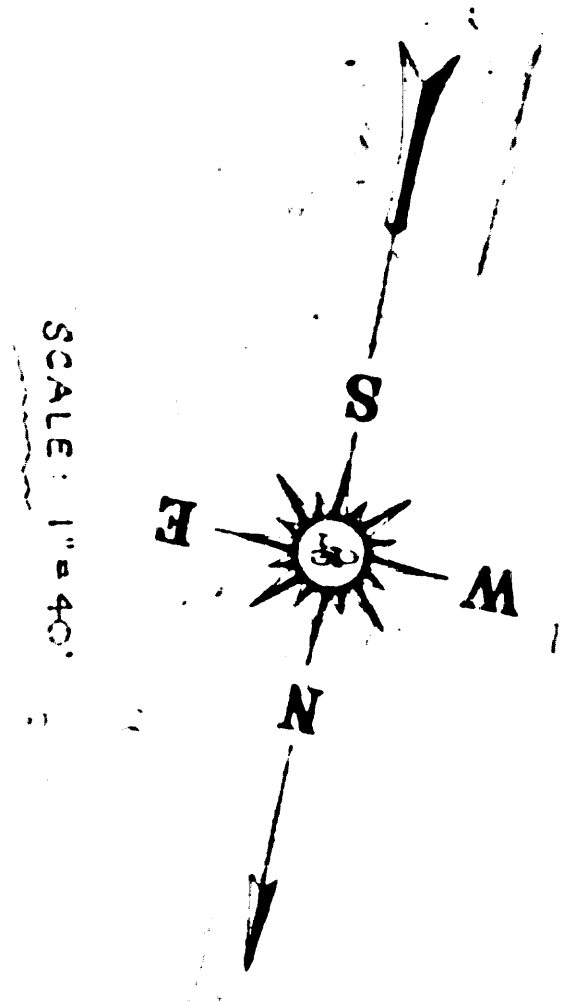
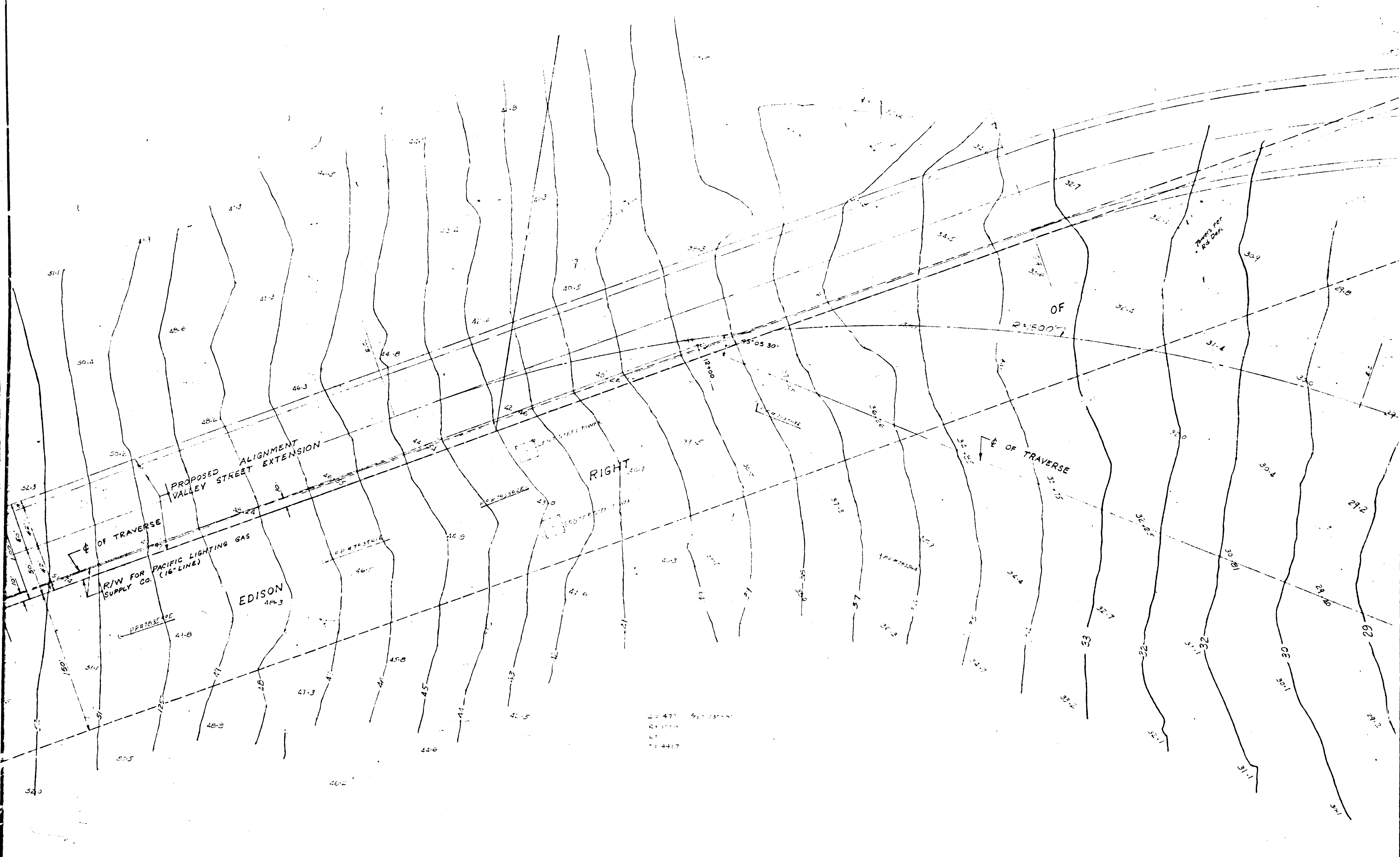
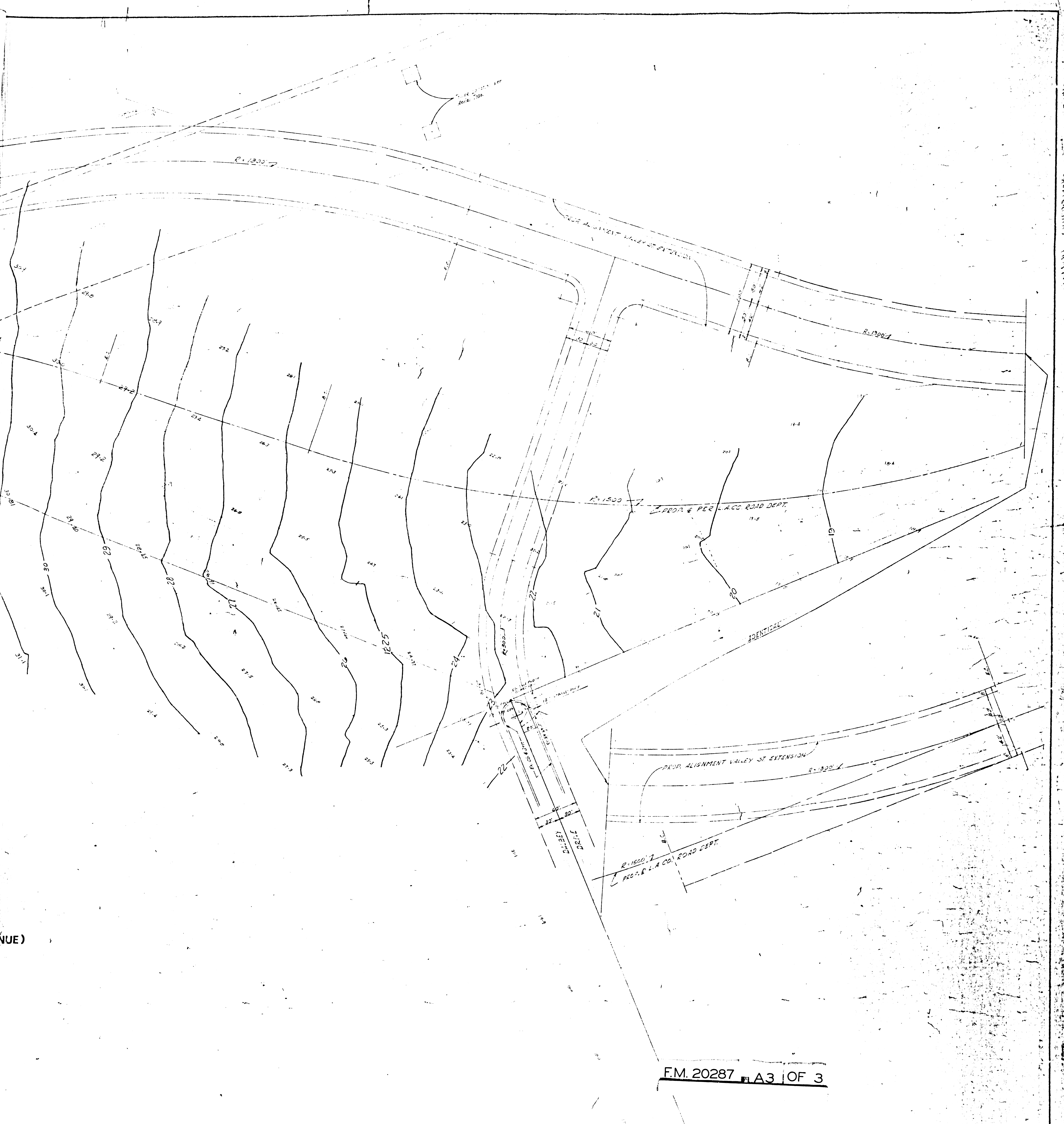


FM. 20287 A1 OF 3





PROPOSED ALIGNMENT VALLEY STREET EXTENSION (GRASSLAND AVENUE)
FOR NEWHALL LAND & FARMING CO.



(NUE)

F.M. 20287 A3 OF 3

REVISION				DEVELOPMENT CONSULTANTS, INC.			
1-2-66	Added Prop. Align. - Vall.	St. Ext.		Designed By:		Drawing No. W.G. 10202	
1-22-66	Revised	St. Ext.		Checked By:		Scale: 1" = 50'	
				Date: 1-15-66		Sheet: 1 of 3	
				Approved:			
				By:			