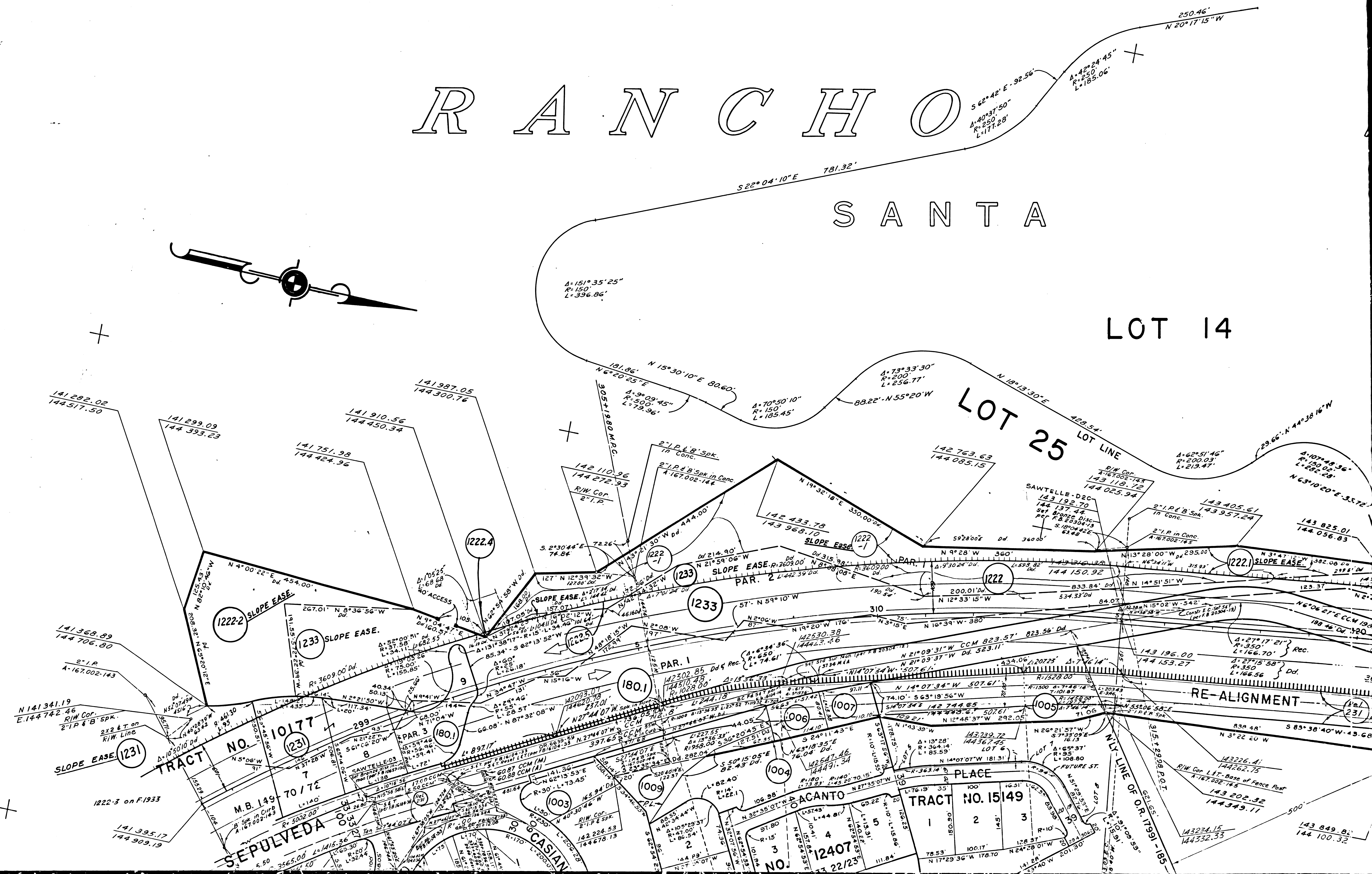
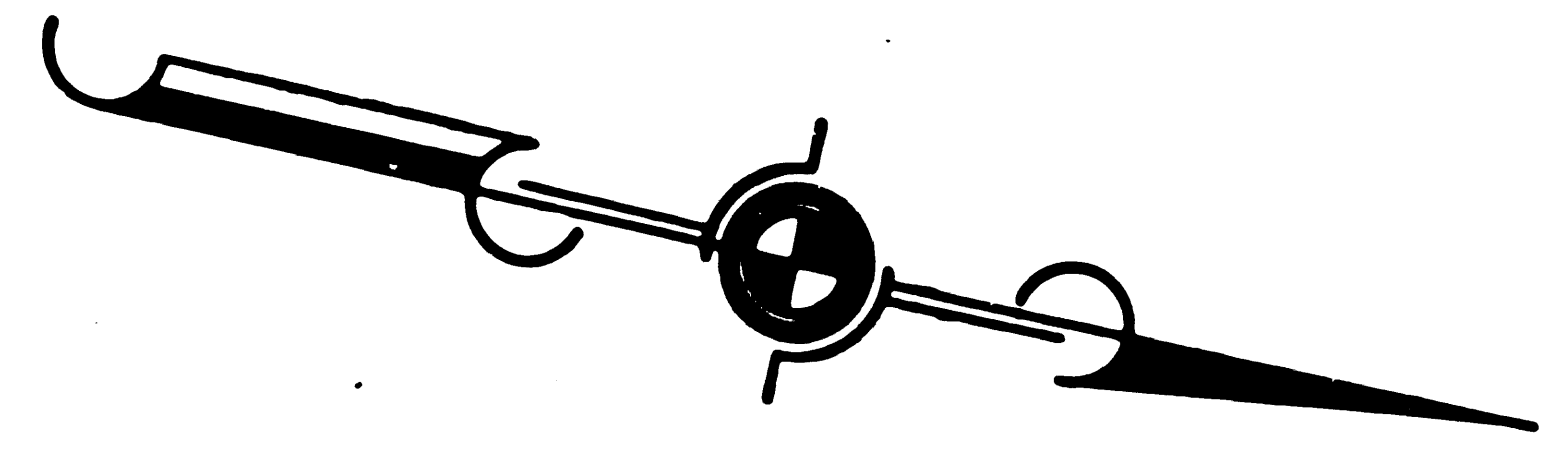


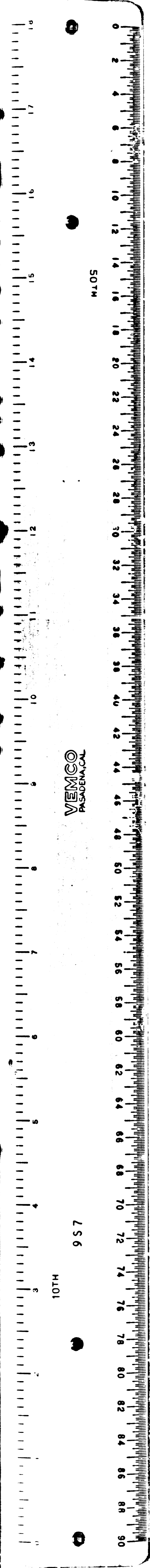
RANCHO

SANTA

LOT 14



FOR CONTINUATION SEE MAP NO. F-19



WEMCO

957

R E G I O N

F.M. 20306 A2 OF 4

D I V I S I O N

S A N

V I C E N T E

O. M. 1 - 76

M O N I C A

L A N D

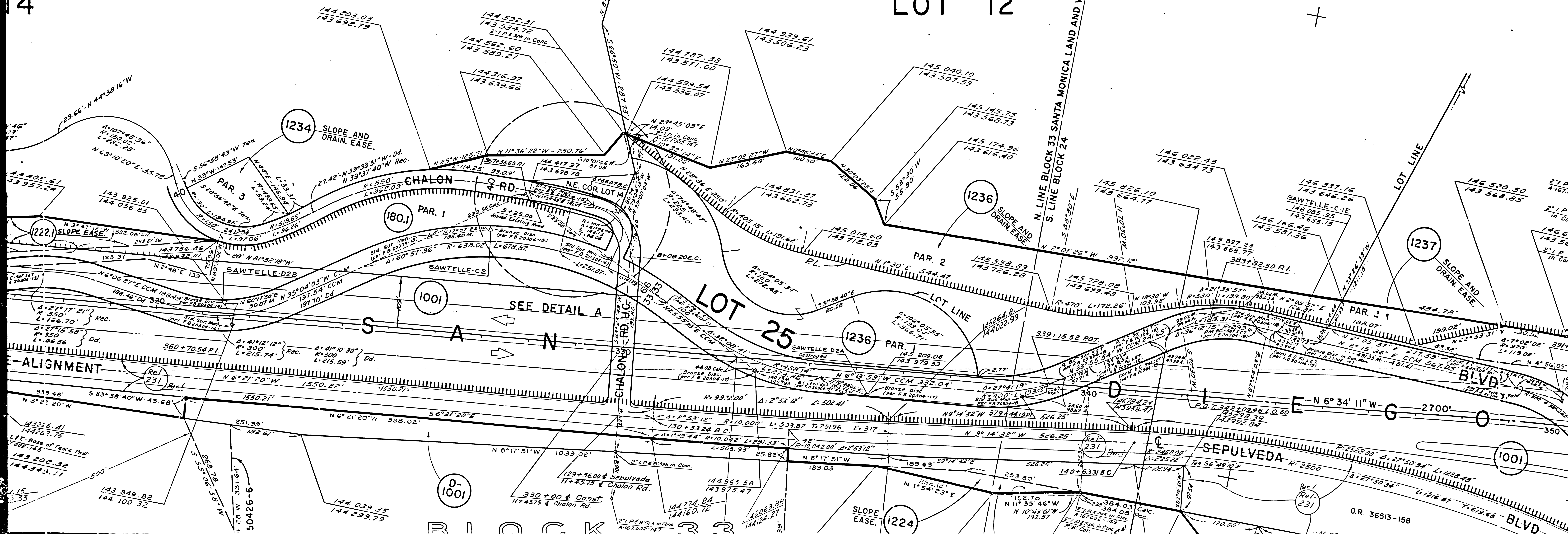
P: 3

M. R. 78 - 44 / 48

A N D

LOT 12

4

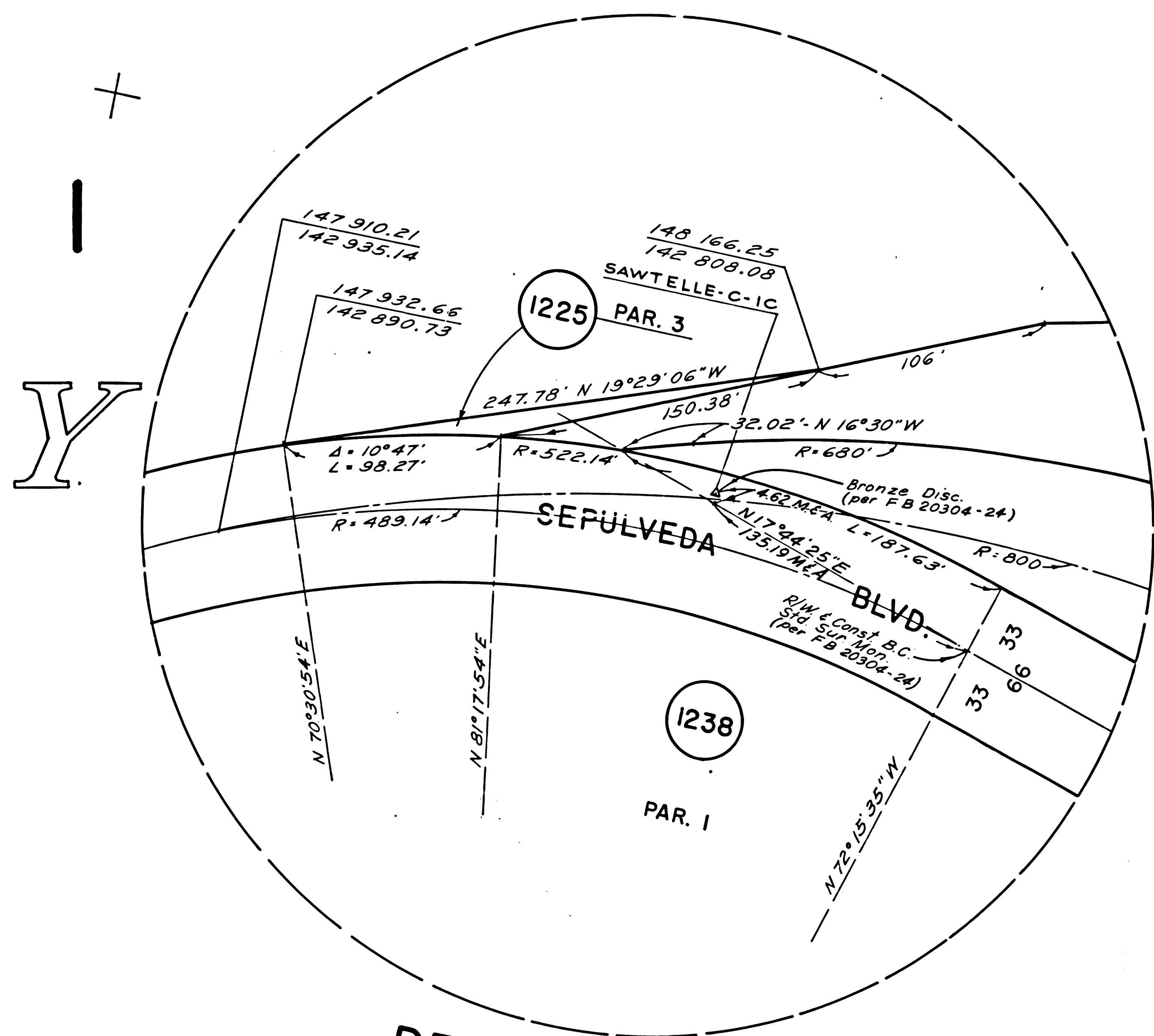


1 - 76 / 85

P: 3 - 31

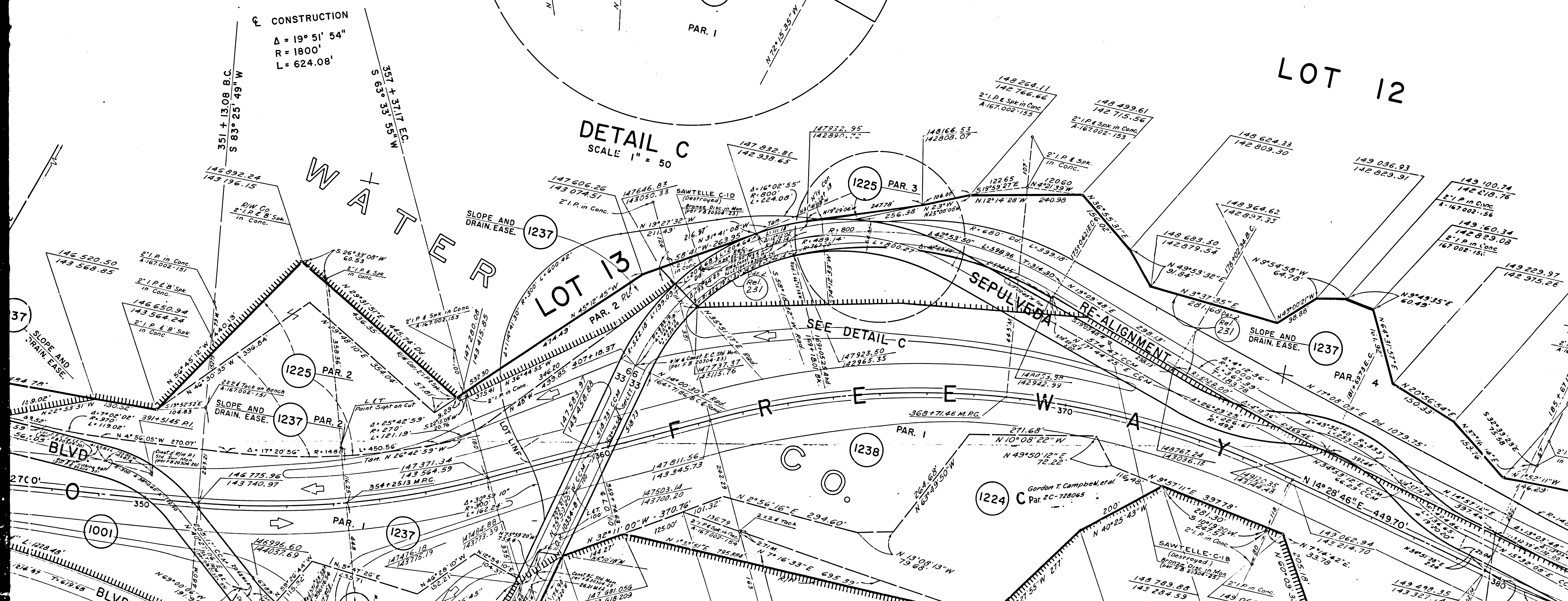
3 6

F.M.20306 A3 OF 4



DETAIL C
SCALE 1" = 50

LOT 12



CONSTRUCTION
 $\Delta = 19^\circ 51' 54''$
 $R = 1800'$
 $L = 624.08'$

WATER

LOT 13

FR

SEE DETAIL C

SEPULVEDA

RE-ALIGNMENT

SLOPE AND DRAIN EASE

BLVD

1001

BLVD

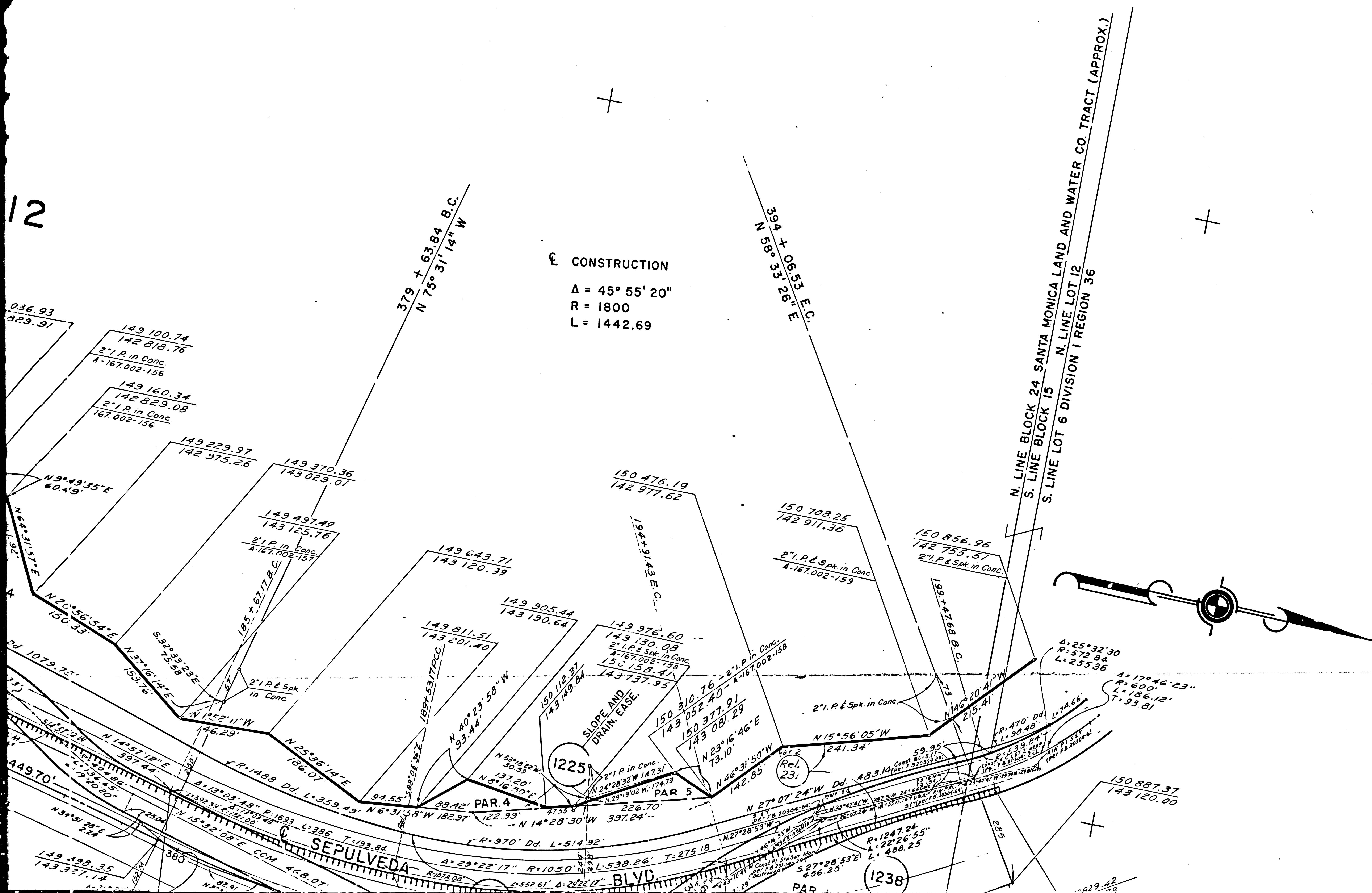
Gordon T. Campbell, et al.
Par. 2C-728065

MONICA

FILED MAP NO. 20306

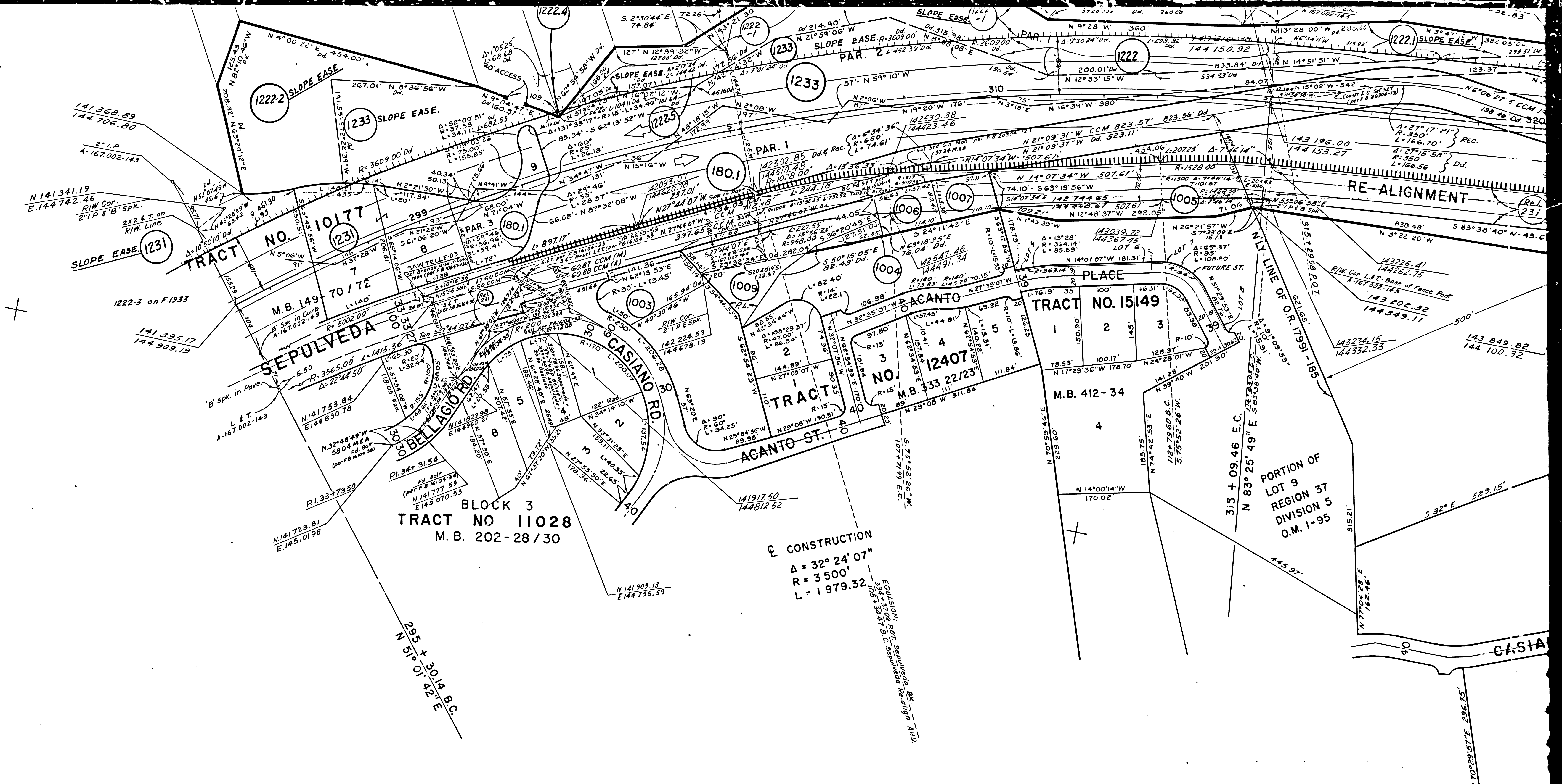
12

CONSTRUCTION
Δ = 45° 55' 20"
R = 1800
L = 1442.69



CONTINUATION SEE MAP NO. F-1935

UNATION SEE MAP NO. F-1933

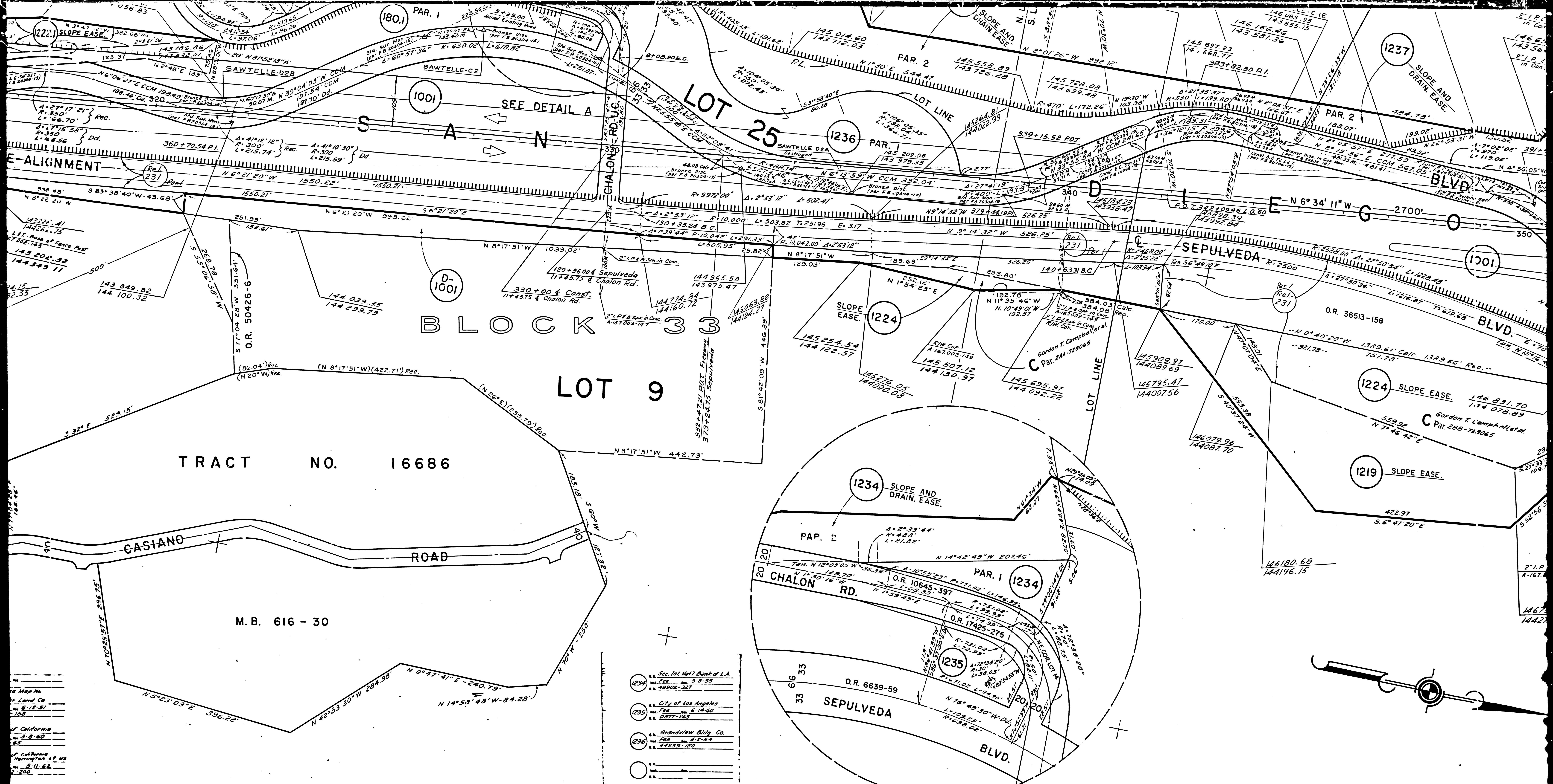


(1222)	Gordon T. Campbell, et ux Fee 22430-924	(1223)	Alan D. Herrington, et ux Fee 39182-145	(1233)	Robert W. Phillips Fee 52623-205
(1222-1)	Gordon T. Campbell, et ux EASE 22430-924	(1233-1)	Lloyd J. Stevens, et ux Fee 47914-151	(1233-1)	Bel Air Land Co. Fee 36513-158
(1222-2)	Gordon T. Campbell, et ux EASE 22430-924	(1233-2)	Bel Air Land Co. Fee 49272-431	(1233-2)	Charles M. Taylor, et ux Fee 49779-75
(1222-3)	Gordon T. Campbell, et ux EASE 22430-924	(1233-3)	Guy E. Ward, et ux Fee 53494-144	(1233-3)	State of California Rel. 2096-222
(1222-4)	Gordon T. Campbell, et ux EASE 22430-924	(1233-4)	State of California Rel. 2096-222	(1233-4)	George Bancroft, et ux Fee 46818-37
(1222-5)	Gordon T. Campbell, et ux EASE 22430-924	(1233-5)	Guy E. Ward, et ux Fee 53494-144	(1233-5)	State of California Rel. 2096-222

F.M. 20306 BI OF 4

R

MEMCO
957
50 FT



REGIONS

DIVISIONS

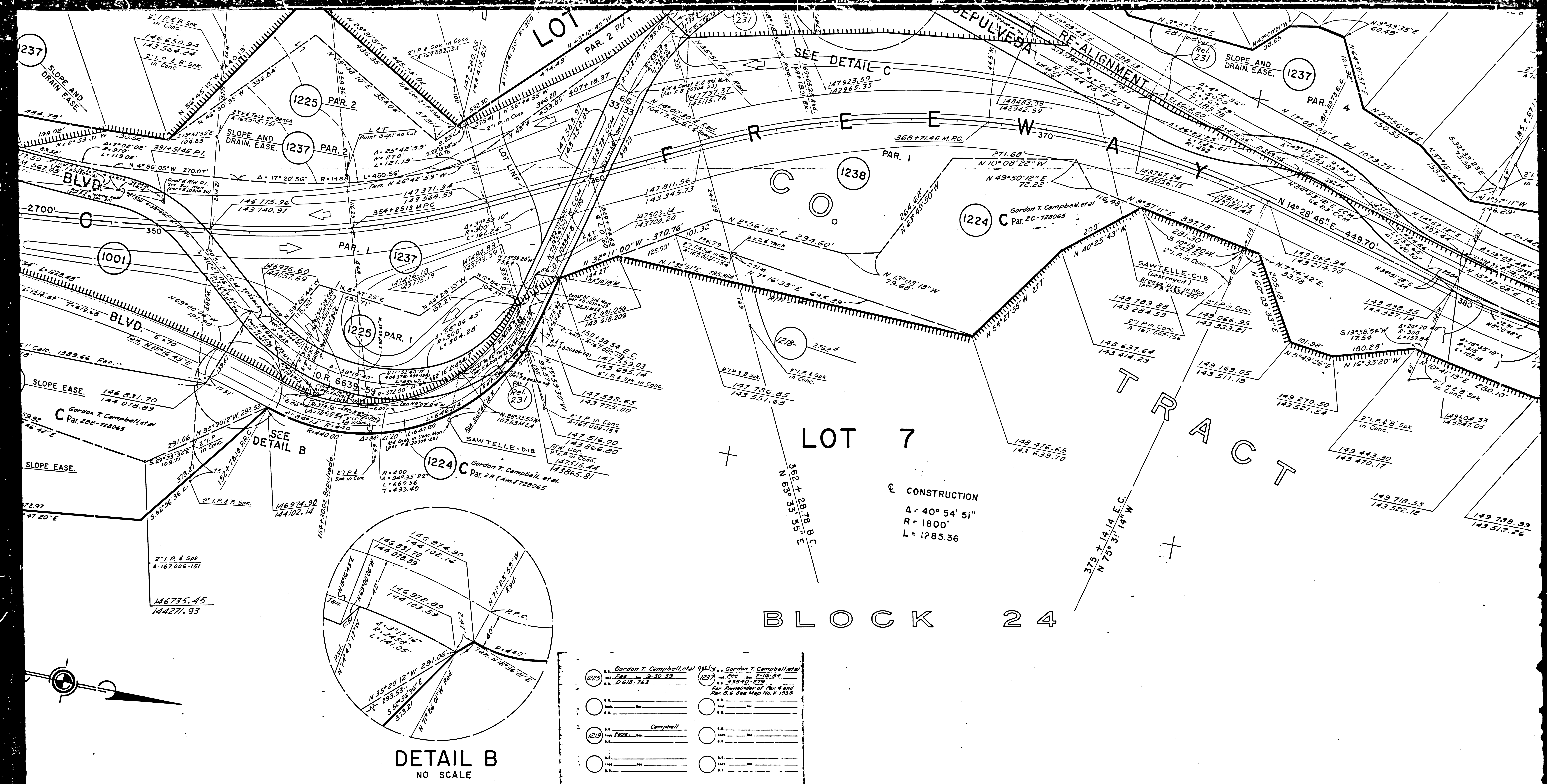
DETAIL A
SCALE 1" = 50'

F.M. 20306 B2 OF 4

O. M. I

Map No.
Land Co.
City of California
Grandview Bldg. Co.
Herrington & Co.

- 1234 Sec. 1st Nat'l Bank of L.A.
Map No. 3-8-55
S. 44902-367
- 1235 City of Los Angeles
Map No. 6-14-60
S. 2877-263
- 1236 Grandview Bldg. Co.
Map No. 4-2-54
S. 44239-120



LOT 7
 CONSTRUCTION
 $\Delta = 40^\circ 54' 51''$
 $R = 1800'$
 $L = 1285.36$

BLOCK 24

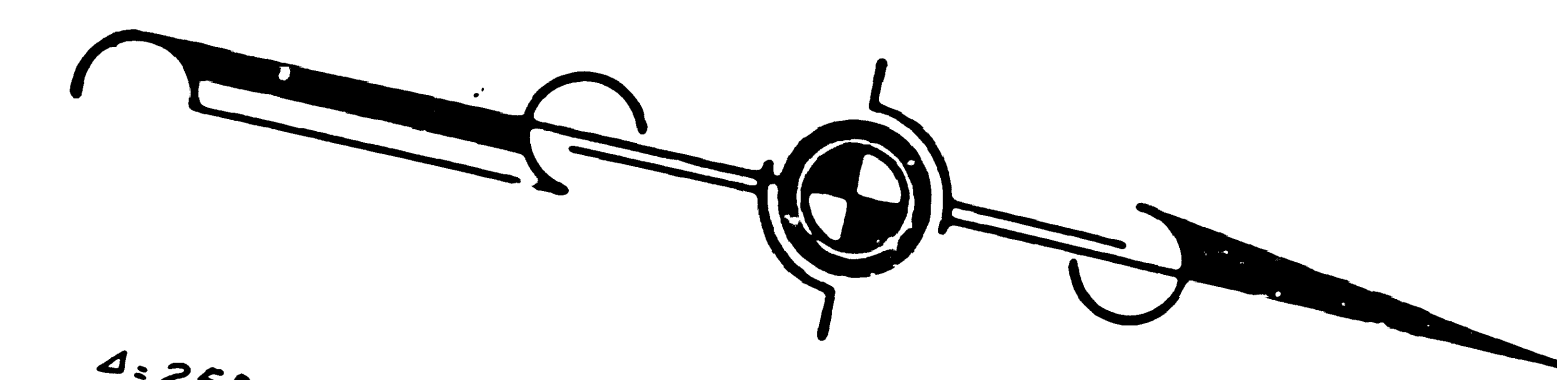
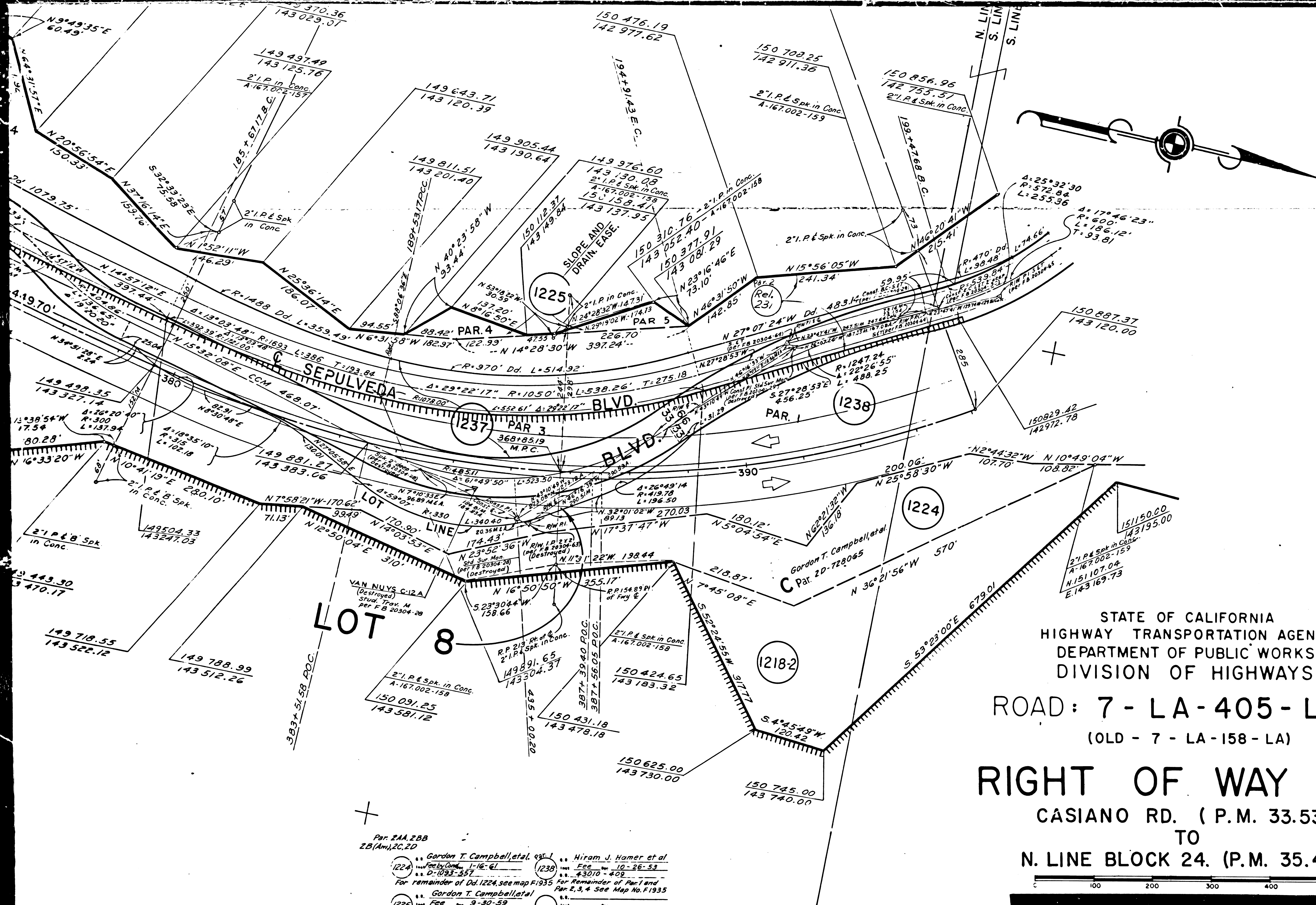
DETAIL B
 NO SCALE

F.M.20306 B.3 OF 4

37

5

1 - 93 / 95



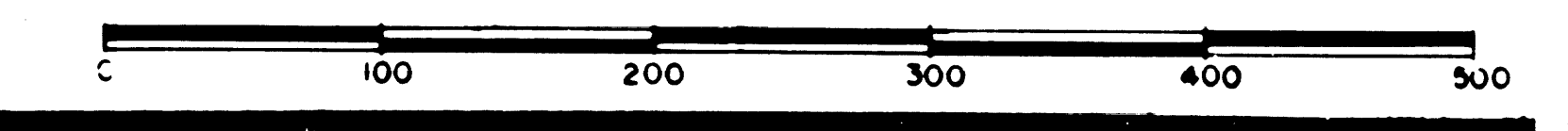
FOR CONTINUATION SEE MAP NO. R

STATE OF CALIFORNIA
HIGHWAY TRANSPORTATION AGENCY
DEPARTMENT OF PUBLIC WORKS
DIVISION OF HIGHWAYS

ROAD: 7 - LA - 405 - LA
(OLD - 7 - LA - 158 - LA)

RIGHT OF WAY MAP

CASIANO RD. (P.M. 33.53)
TO
N. LINE BLOCK 24. (P.M. 35.40)



COORDINATES SHOWN ARE FOR INTERNAL USE OF THE DIVISION OF HIGHWAYS AND ARE TO BE USED FOR REFERENCE ONLY

BASIS OF BEARINGS FOR THIS MAP FROM ϕ OF OLD SEPULVEDA BLVD.

MONUMENTATION FROM C.C.M. 167.39 & 167.40 REV. 12-60. A NOTES 167.002.

Par. 2A, 2BB
ZB(Am), 2C, 2D

1224	Gordon T. Campbell et al.	1238	Hiram J. Hamer et al.
1225	Fee No. 10-28-53	1239	Fee No. 10-28-53
	For remainder of Old 1224, see map P. 1935		For remainder of Old 1224, see map P. 1935
	Par. 2, 3, 4. See Map No. F-1935		Par. 2, 3, 4. See Map No. F-1935

F.M. 20306 B4 OF 4

FILED MAP NO. 20306
4

F.M. 20306