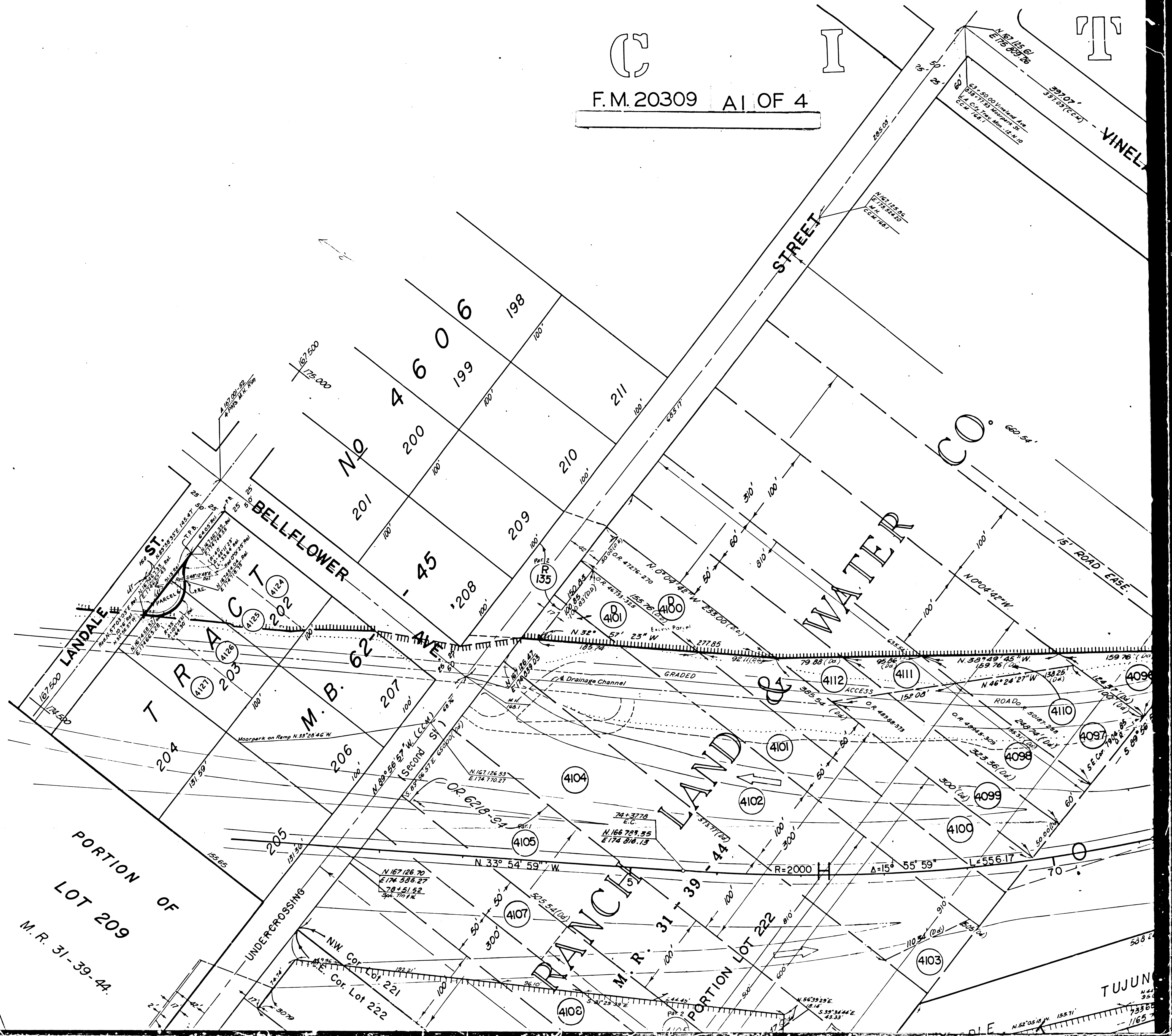


C I
F.M. 20309 A1 OF 4

FOR CONTINUATION SEE MAP F-1383



MIDD

TUJUN

Chia X
A270.001-31
N 165.478.33
E 117.110.13

10-00 Comp Map
A 270.001-31
OR 1334

AGAMA

PORTION OF LOT 239

F.M. 20309 A2 OF 4

DIVI

LAND

WLOTS 234 235

LANKERSHIM

T Y

VINELAND

BLOOMFIELD ST.

PACIFIC

WHIPPLE

STREET

TRACT BLOCK 3

ELECTRIC

UNDERCROSSING

AVENUE

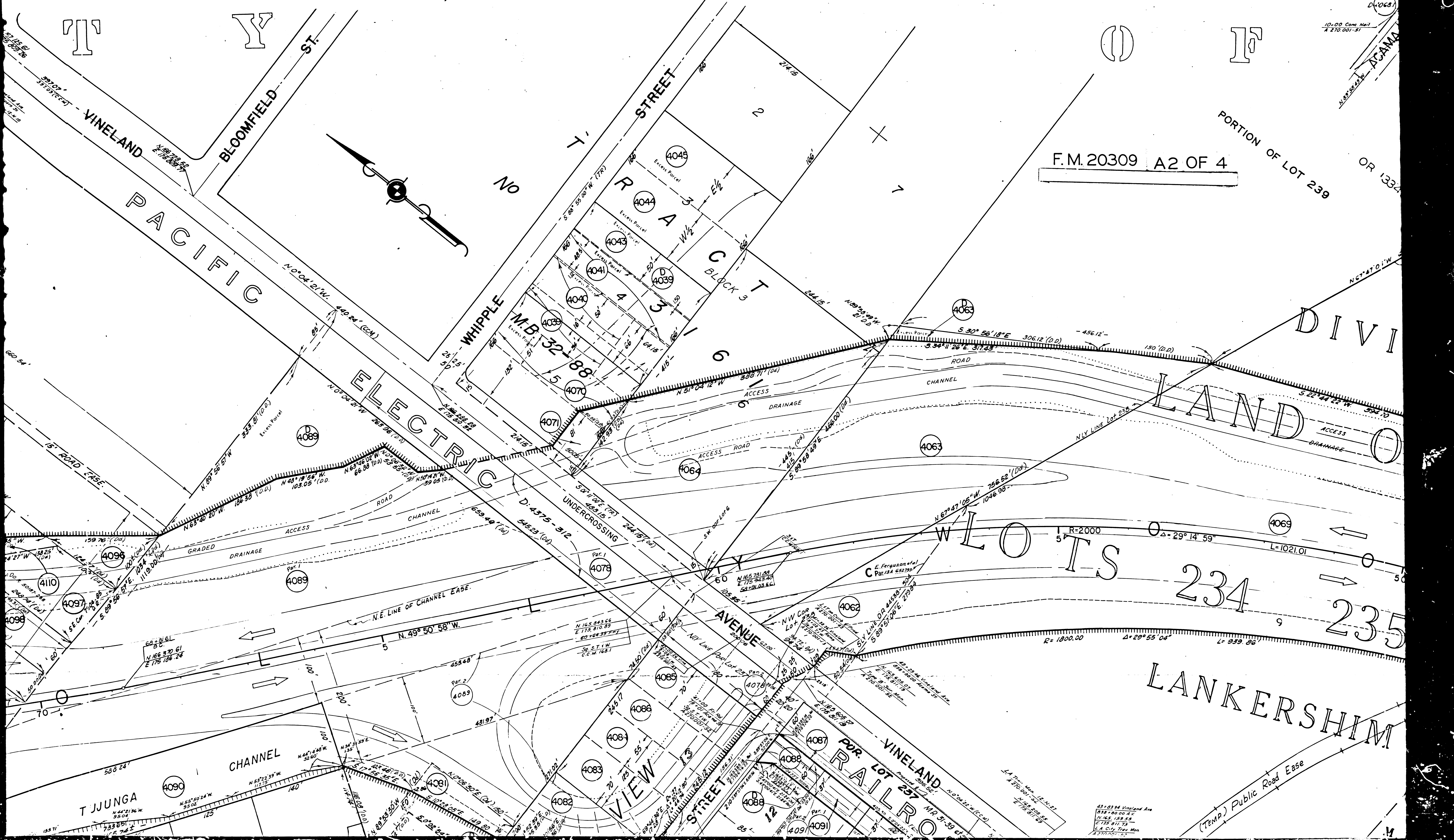
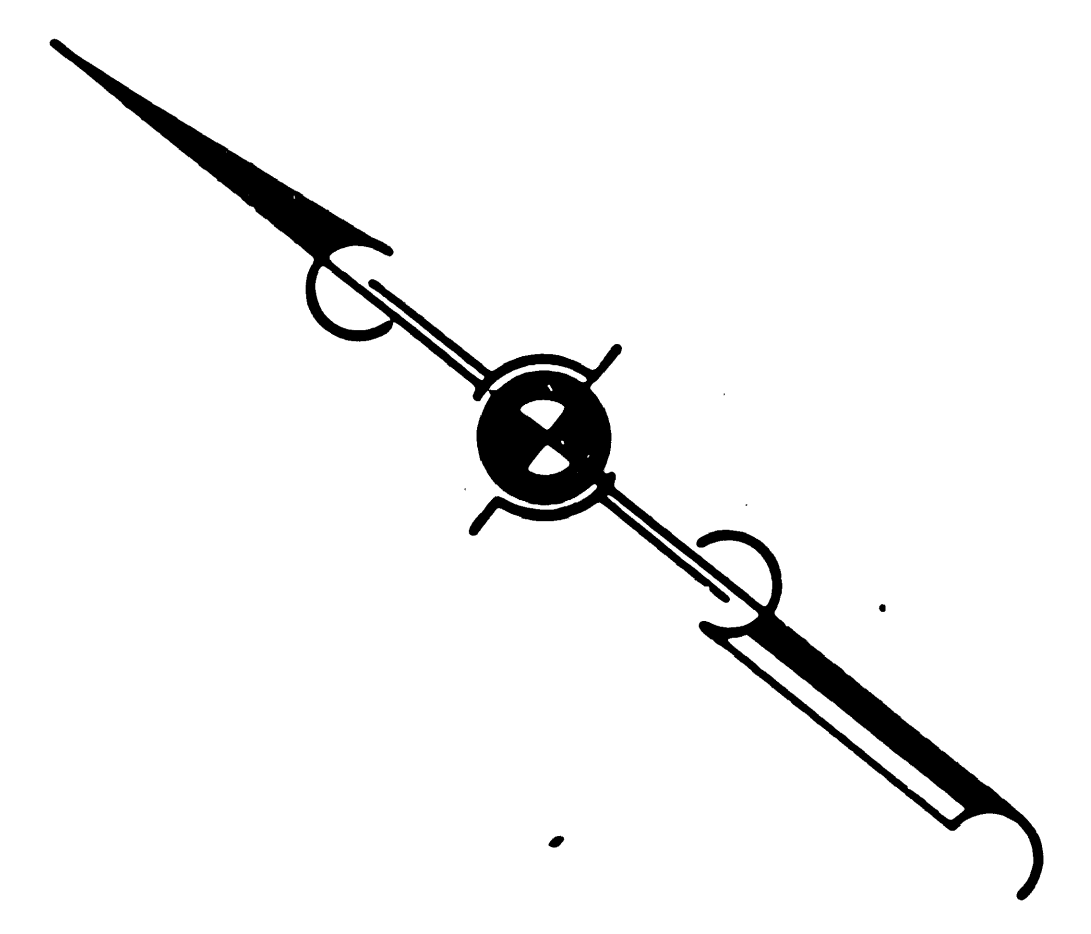
WLOTS

VINELAND

RAILROAD

VIEW

STREET



T JJUNGA

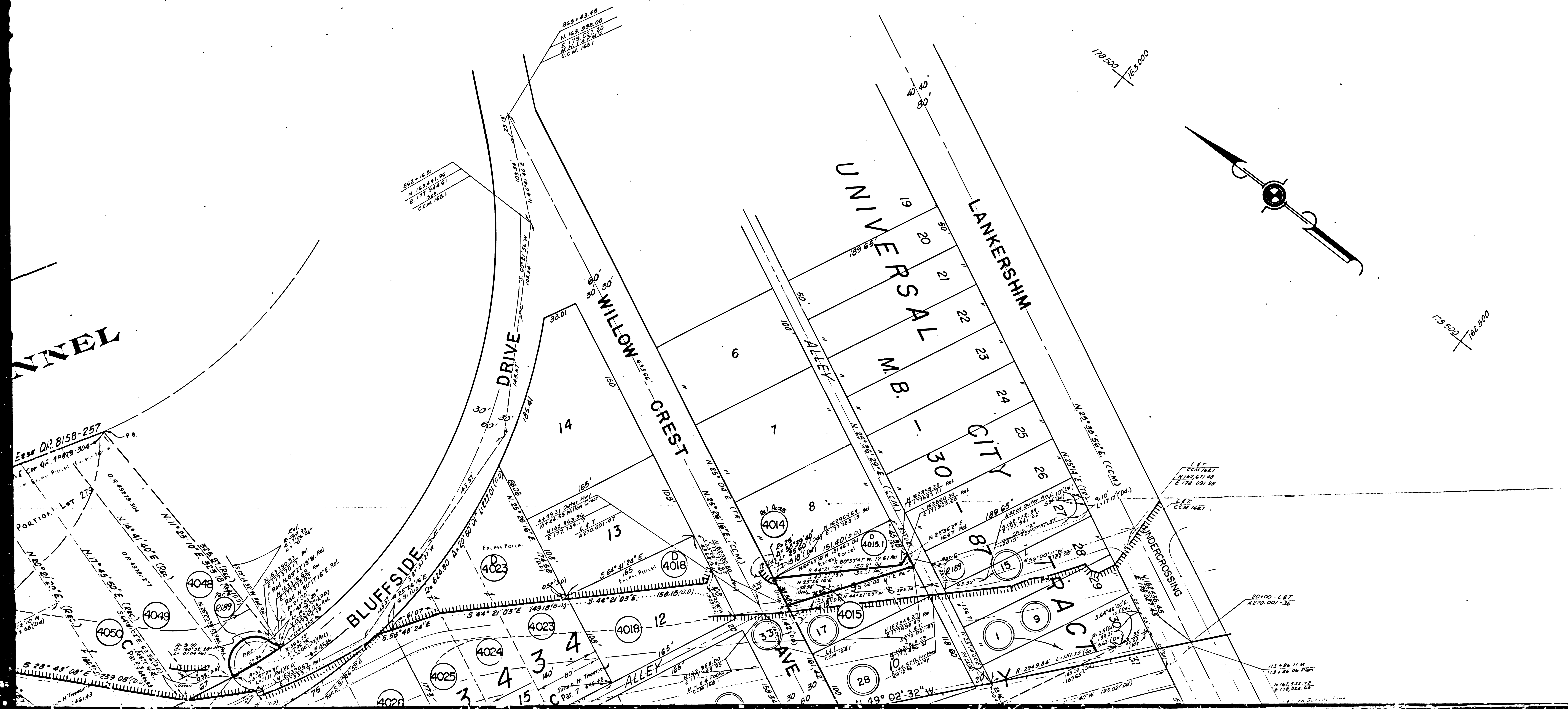
CHANNEL

(TEMP.) Public Road Ease

83 + 93.94 Vineland Ave
1318 + 00.00 A1
104.61 + 129.55
E 175.811.75
L.A. City Trac Map
11/27/01

A N G E L E S

F.M. 20309 A4 OF 4

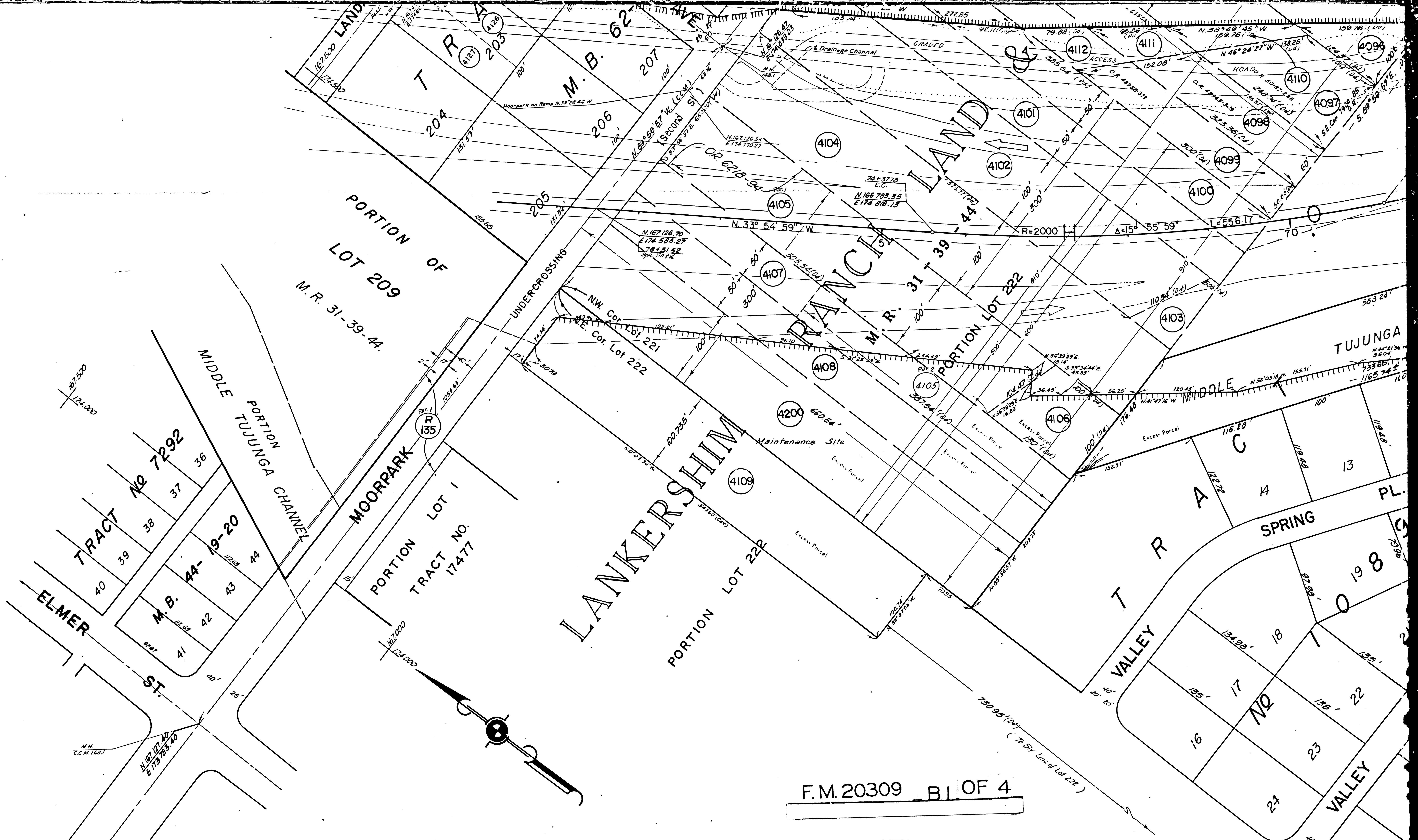


FOR CONTINUATION SEE MAP F-1381

FILED MAR 19 1909

FOR CONTINUATION SEE MAP F-1383

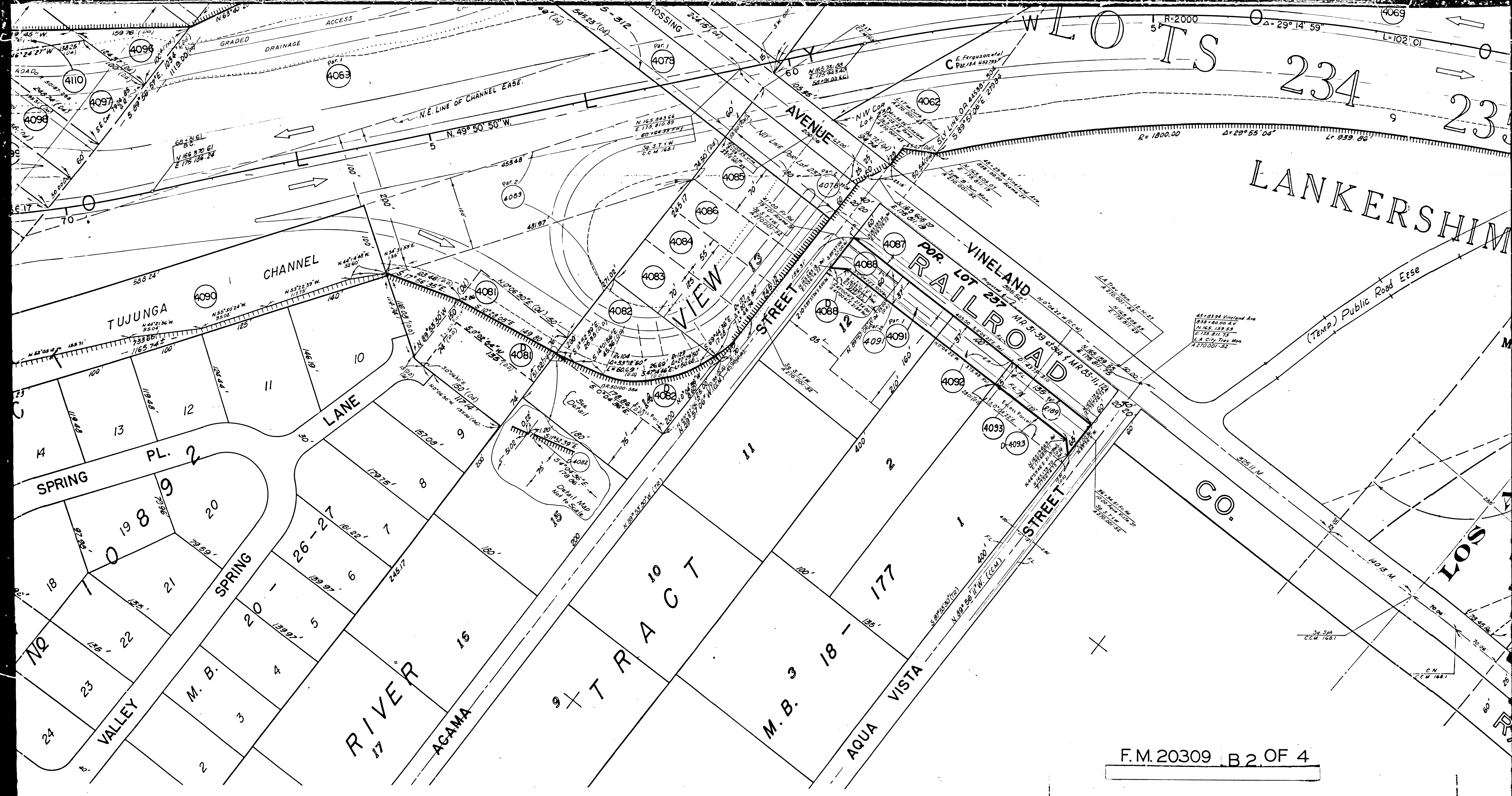
FILED MAP NO. 20309



F.M. 20309 B.I. OF 4

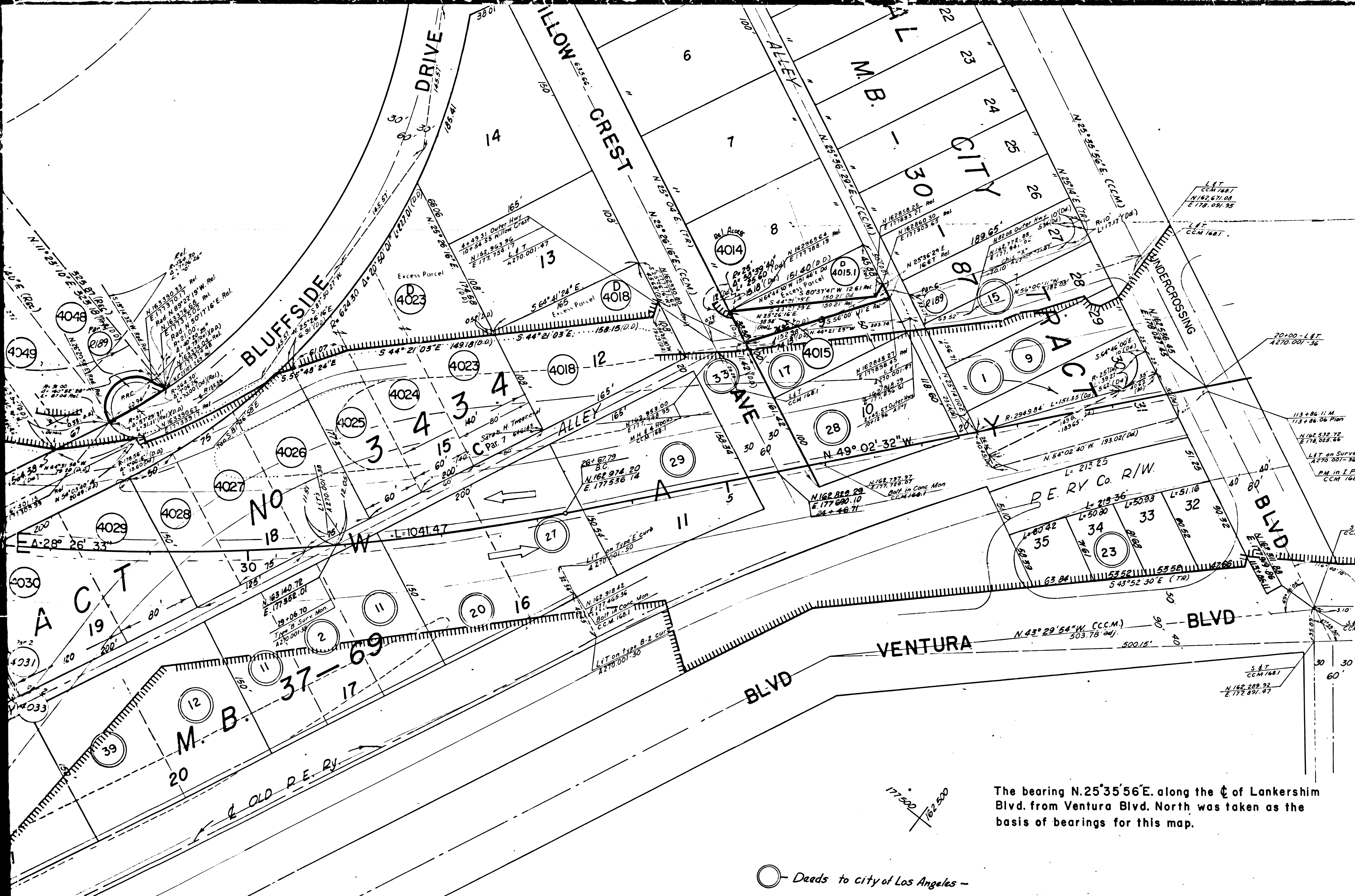
Portions of these parcels are Affected by Maintenance Site Work Order 60-7 MII

<ul style="list-style-type: none"> State to City of Los Angeles Bank of America V.C. Nobles et ux Ernestine Furquson M. H. Turaham Carl B. Nobles 	<ul style="list-style-type: none"> Richard Arlen et ux A. Walsh et ux M.I. Chambers Ernestine Furquson M.H. Turaham John H. Berg W.L. Chambers et ux Richard B. Jones et ux Steph. W. (S. W.) 	<ul style="list-style-type: none"> Dorothy E. Turaham M.I. Chambers E.J. Wells et ux H.H. Turaham Thomas F. 	<ul style="list-style-type: none"> John H. Berg W.L. Chambers et ux Richard B. Jones et ux Steph. W. (S. W.) Thomas F.
---	--	--	---



F.M. 20309 B2 OF 4

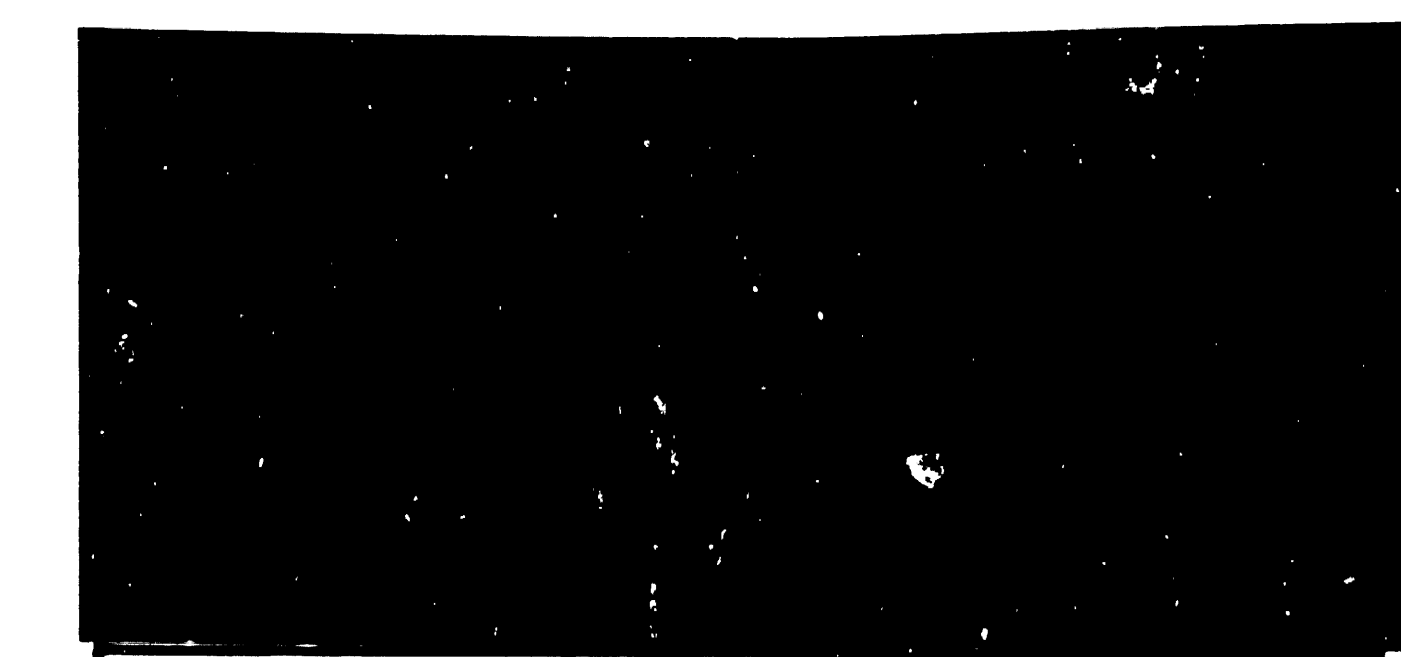
<p>K.C. Nobles et al 12-2-55 42888-312</p> <p>W.L. Rumbold et al 12-2-55 41276-272</p> <p>Richard A Jones et al 12-2-55 40753-317</p> <p>State to U.S. Hwy 12-2-55 40753-317</p>	<p>John H Briggs 12-2-55 5074-347</p> <p>Max Moore et al 12-2-55 5161-106</p> <p>Clyde B Nobles 12-2-55 50753-317</p> <p>Thomas F Gleason 12-2-55 41243-312</p>	<p>Richard Arden et al 12-2-55 53075-193</p> <p>M.E. Van Sant et al 12-2-55 5161-106</p> <p>Genevieve D. Scott 12-2-55 50753-317</p>	<p>Pacific Electric Ry Co 12-2-55 54911-362</p> <p>RA Jones et al 12-2-55 49902-318</p> <p>E.S. White et al 12-2-55 42767-344</p> <p>State to City of L.A. 12-2-55 12-202-26</p>	<p>H. Weisberg et al 12-2-55 30902-252</p> <p>Step H. Torres et al 12-2-55 39529-174</p> <p>Barbara Chamber 12-2-55 47174-174</p> <p>State to L.L. Butler 12-2-55 7-477-547</p>	<p>L. Young et al 12-2-55 51157-271</p> <p>J.S. Spinks et al 12-2-55 53102-308</p> <p>State to V.M. Anthony 12-2-55 71-847-522</p> <p>R.L. Howell et al 12-2-55 8-267-544</p>	<p>P. Janssen et al 12-2-55 50683-432</p> <p>G.E. Shea et al 12-2-55 49761-271</p> <p>Pacific Electric Ry Co 12-2-55 52742-168</p> <p>State to Western Republic Co 12-2-55 71-574-436</p>	<p>E. Lawrence et al 12-2-55 50252-32</p> <p>State to Marine Room 12-2-55 7-497-549</p> <p>Washington Investment Co 12-2-55 49924-297</p> <p>State to Edward Katz et al 12-2-55 12-2-271</p>	<p>State to Van Meter et al 12-2-55 7-125-261</p> <p>L.A. City School Dist 12-2-55 7-265-276</p> <p>Wattie C. Cookley 12-2-55 50419-168</p> <p>State to M.C. Higgins 12-2-55 43349-308</p>	<p>State to Clark Sharp et al 12-2-55 7-125-261</p> <p>L.A. Co. Flood Cont. Dist 12-2-55 7-265-276</p> <p>City of Los Angeles 12-2-55 50419-168</p> <p>RE Van Meter et al 12-2-55 43349-308</p>	<p>Niki O'Connell 12-2-55 50753-317</p> <p>RR Pullman et al 12-2-55 50753-317</p> <p>G.L. Bland et al 12-2-55 50753-317</p> <p>Amie Lester et al 12-2-55 50753-317</p>
--	---	--	--	---	---	---	--	--	---	--



F.M. 20309 B4 OF 4

STATE OF CALIFORNIA
 HIGHWAY TRANSPORTATION AGENCY
 DEPARTMENT OF PUBLIC WORKS
 DIVISION OF HIGHWAYS
 ROAD: 7-LA-101
 (Old LA-2-LA, 2)

RIGHT OF WAY MAP
 HOLLYWOOD FWY EXTENSION (PM 10.34)
 TO
 MOORPARK ST. (PM 11.45)



COORDINATES SHOWN ARE FOR INTERNAL
 USE OF THE DIVISION OF HIGHWAYS AND
 ARE TO BE USED FOR REFERENCE ONLY

BASIS OF BEARING FOR THIS MAP FROM
 C OF LANKERSHIM BLVD. = N. 25° 35' 56" E.
 MONUMENTATION FROM "A" NOTES 270.001
 & C.C.M. 168.1

F-1382

REPRODUCIBLE COPY FILED WITH L. A. CO. SURVEYOR 11-64

Deeds to city of Los Angeles -

1 Marietta L. Koval	12 Miriam W. Sanders	23 Frank Muller, et al	32 Mary D. McVella
2 Lillian R. Warren	15 H.S. Scheiman	27 Chris Korig	35 Ches Clammangen, et al
9 Giuseppe Borgis, et al	17 Chelmer E. Snodgrass	20 Anne Vidas	39 F.G. Mc Gaffey, et al
11 Willie M. Carter, et al	20 A.W. Hentschel, et al	29 Frank England, et al	

4021 C.L. Stroud, et al	4027 Stella R. Lloyd, et al		
4022 Sophie Gould, et al	4028 R. Pandolati, et al		
4023 State of Calif. by Gen'l. A.	4029 Williamina Devadella, et al		
4024 C.L. Melnickoff, et al	4030 I.C. Poirier, et al		

4025 L. Baker, et al	4031 W.D. Taylor, et al	4034 Amanda Klumburg
4026 Martha G. Patton	4032 State to Harry Mills, et al	4035 M. Sereburg, et al
4027	4033 Sarah H. Tread, et al	4036 State of A. Klumburg heirs
4028	4034 W.D. Taylor, et al	4037 W.D. Taylor, et al

FILED

M.M.
 234
 23
 CF4