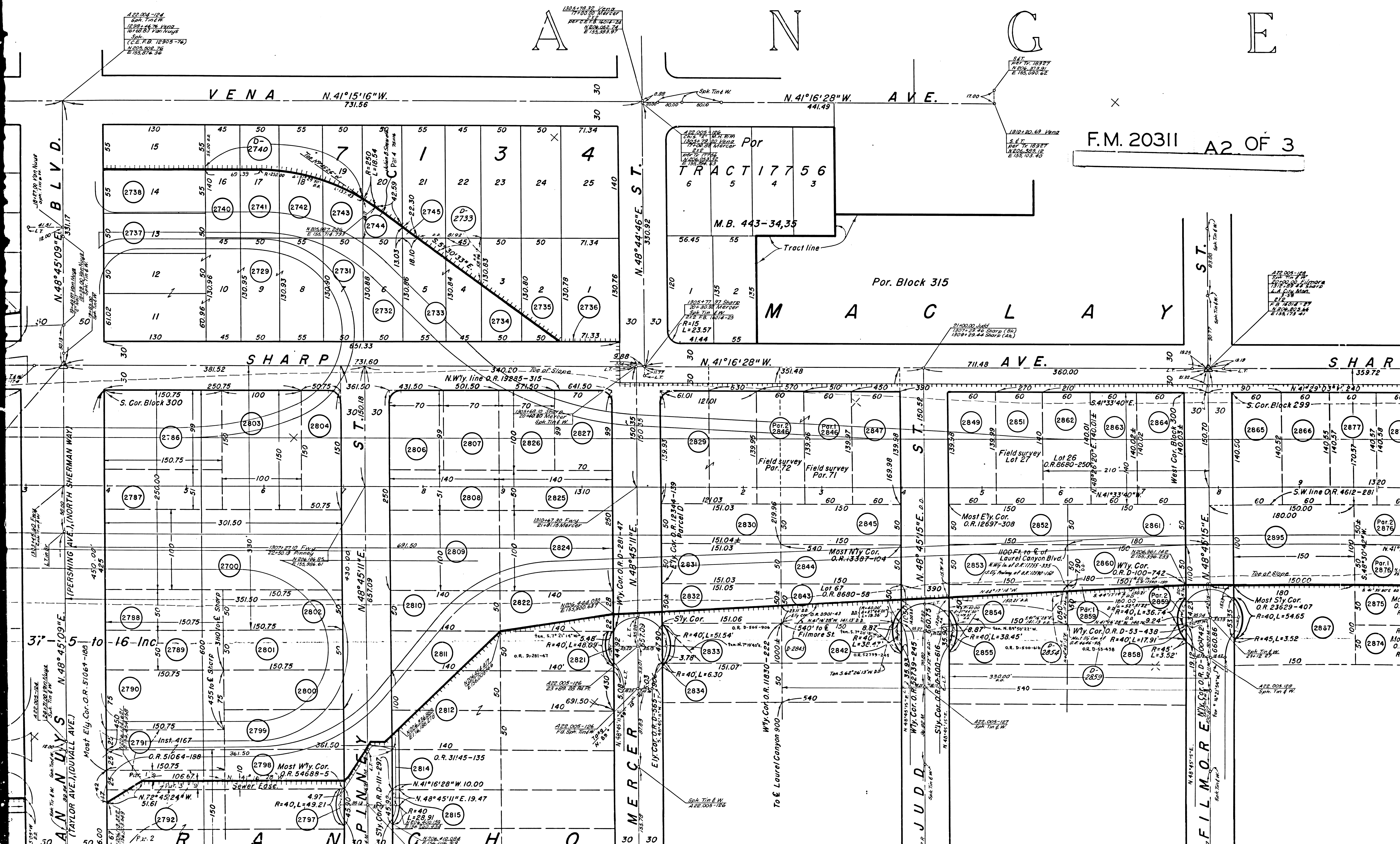


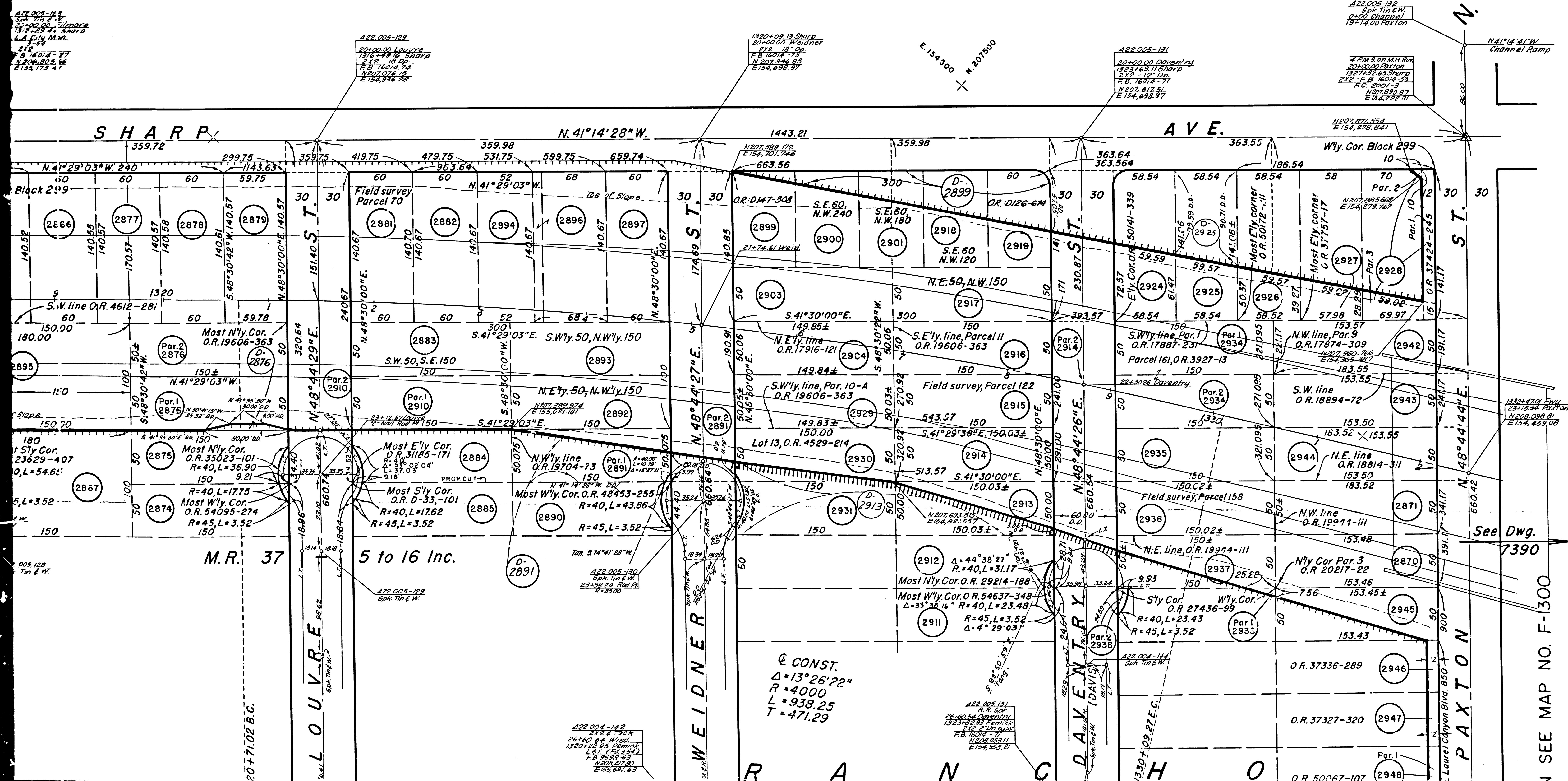
E

F.M. 20311 A2 OF 3

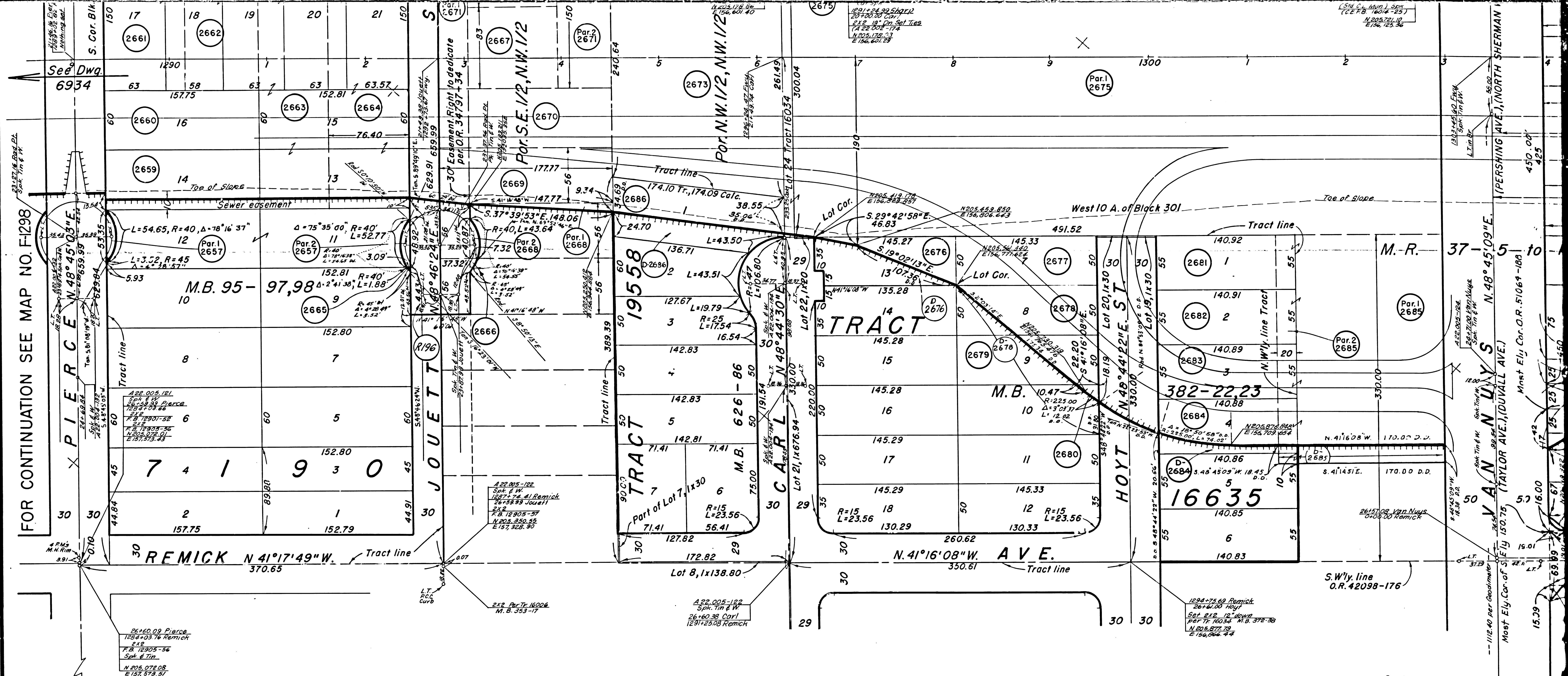


F.M. 20311 A3 OF 3

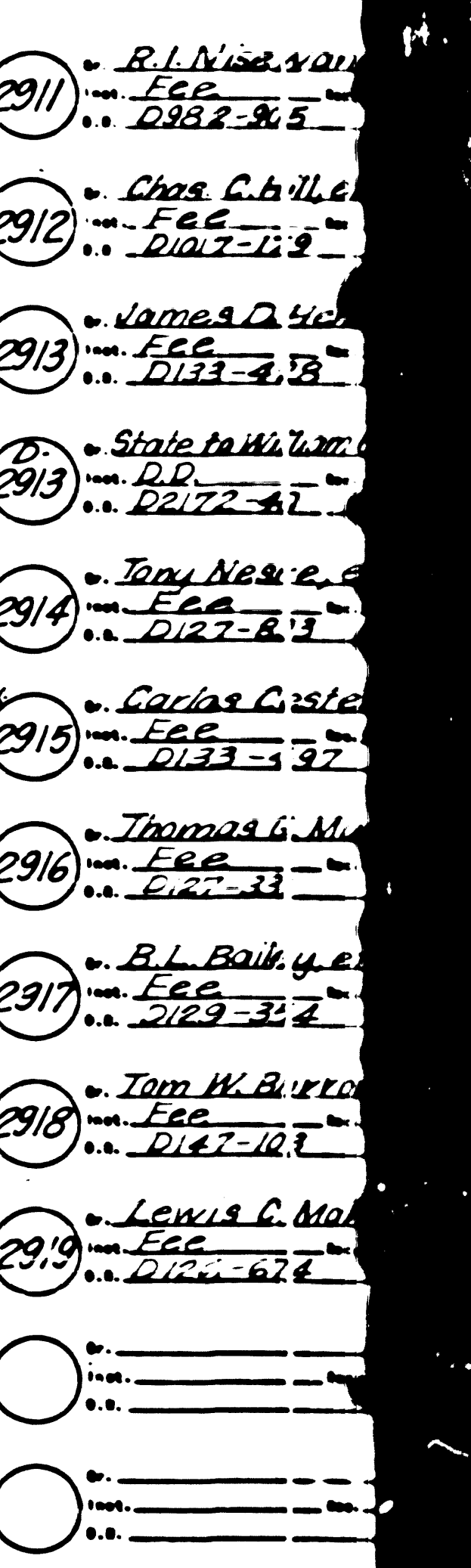
Por. Block 314



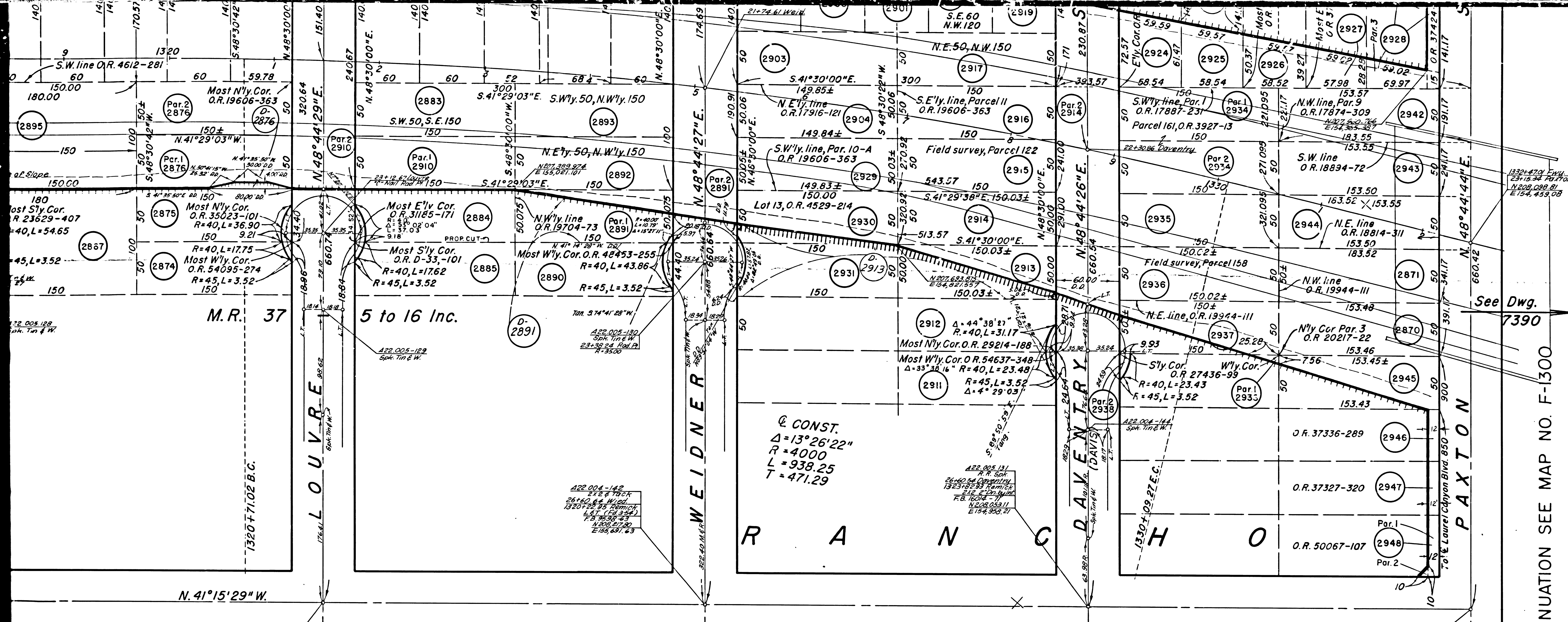
FOR CONTINUATION SEE MAP NO. F1298



2657	State to City of Burbank et al.	2665	Raul M. Perez	2673	State to Howard I. Abel et al.	2681	A. D. Diamond et al.	2689	State to Marie O. Metzger	2697	Bernice E. Watts	2705	Chas. J. Meichtry et al.
2658	State to City of Burbank et al.	2666	Dept. of Val. Affairs	2674	Jack Brooks et al.	2682	James Collins et al.	2690	Henry B. Edwards et al.	2698	Harris C. Finwall et al.	2706	Sydney Sherman et al.
2659	State to City of Burbank et al.	2667	Jesus V. Avila et al.	2675	Raymond J. Seibold et al.	2683	State to Luis Castellano et al.	2691	Bruce O. Orcutt et al.	2699	Sydney Sherman et al.	2707	State to Charles Ray et al.
2660	State to City of Burbank et al.	2668	Arata Yoshimura et al.	2676	State to Dal. Invest. Fund	2684	David H. Knowles et al.	2692	Ellen A. Taylor	2700	Flora M. Brooks	2708	Archdiocese of L.A. Edw.
2661	State to City of Burbank et al.	2669	Eugene C. Harmon et al.	2677	Bento R. Medall et al.	2685	Berthold E. O'Ryan et al.	2693	Alvin E. Cerny et al.	2701	John W. Melone et al.	2709	State to Charles Ray et al.
2662	State to City of Burbank et al.	2670	Geronimo Rapon et al.	2678	W. E. Westman et al.	2679	Rupert M. Trinidad et al.	2686	John W. Melone et al.	2702	State to A.E. Wallace	2710	Leonard J. Anguish
2663	State to City of Burbank et al.	2671	A.E. Cornelius Jr. et al.	2679	J. Martelli et al.	2680	Ellis W. Foote et al.	2687	Tony L. Gonzales et al.	2703	Ada M. Hoffman	2711	Paul W. Epply
2664	State to City of Burbank et al.	2672	Sunshine Investment Corp.	2681	Isaac C. Hill et al.	2682	Edward O. Forrester	2688	Alice M. Kelly	2704	John A. Greene et al.	2712	Beulah Rich
2665	State to City of Burbank et al.	2673	Herbert H. Andrews et al.	2683	Hedel Eggbracht et al.	2684	Sam C. Ringo et al.	2689	Fidelencia C. Riquelme et al.	2705	State to Frank J. Hahn et al.	2713	Julian B. Snow et al.
2666	State to City of Burbank et al.	2674	Charles L. Evans et al.	2685	F.P. Camberos et al.	2686	Lynell H. Hines Inc. et al.	2691	Fumio Yoshioka et al.	2706	State to Frank J. Hahn et al.	2714	Manuel G. Soransong et al.
2667	State to City of Burbank et al.	2675	State to City of Burbank et al.	2676	State to City of Burbank et al.	2677	State to City of Burbank et al.	2678	State to City of Burbank et al.	2679	State to City of Burbank et al.	2680	State to City of Burbank et al.



(291) *R. L. Niss, v. a. r.*
 1944 *ECG* Nov
 n. s. *D127-9-5*
 (292) *Chas. C. Wille*
 1944 *ECG* Nov
 n. s. *D127-11-2*
 (293) *Wm. J. W. W.*
 1944 *ECG* Nov
 n. s. *D127-4-13*
 (294) *State of W. Vir.*
 1944 *P.D.* Nov
 n. s. *D127-4-1*
 (295) *Tony Niss, v. a. r.*
 1944 *ECG* Nov
 n. s. *D127-6-3*
 (296) *Charles C. Wille*
 1944 *ECG* Nov
 n. s. *D127-11-2*
 (297) *Thomas G. W.*
 1944 *ECG* Nov
 n. s. *D127-33*
 (298) *B. L. Bailey, v. a. r.*
 1944 *ECG* Nov
 n. s. *D127-31-4*
 (299) *Tom W. W.*
 1944 *ECG* Nov
 n. s. *D127-10-7*
 (300) *Lewis C. W.*
 1944 *ECG* Nov
 n. s. *D127-6-2*
 ()
 1944 _____
 n. s. _____
 ()
 1944 _____
 n. s. _____
 ()
 1944 _____
 n. s. _____



See Dwg. 7390

FOR CONTINUATION SEE MAP NO. F-1300

- | | | | | | | | | | | | | | | | | | | | | |
|--|---|---|--|---|--|--|---|--|--|---|--|---|---|--|--|--|---|------|------|------|
| 2911 R. L. Nisewander
Fee
D. 22-52 | 2912 Chas. C. Hill, et ux
Fee
D. 10-26-50 | 2913 James O. Wansley, et ux
Fee
D. 6-22-52 | 2914 State of William O. Wochl, et ux
Fee
D. 12-2-52 | 2915 Tony Neske, et ux
Fee
D. 6-16-52 | 2916 Carlos Cestelos, et ux
Fee
D. 6-20-52 | 2917 Thomas G. Munoz, et ux
Fee
D. 6-17-52 | 2918 R. L. Bailey, et ux
Fee
D. 6-17-52 | 2919 Tom W. Burrows, et ux
Fee
D. 7-7-52 | 2920 Lewis C. Makaffly, et ux
Fee
D. 6-17-52 | 2921 William O. Wochl, et ux
Fee
D. 12-2-52 | 2922 John R. DeLesley, et ux
Fee
D. 6-2-52 | 2923 Leroy F. Freeboye, et ux
Fee
D. 6-2-52 | 2924 Harold E. Kriesel, et ux
Fee
D. 6-2-52 | 2925 Michael E. Fedor, et ux
Fee
D. 6-2-52 | 2926 Gloria Steele
Fee
D. 6-2-52 | 2927 Norman B. Campbell, et ux
Fee
D. 6-2-52 | 2928 Alex T. Rodriguez, et ux
Fee
D. 6-2-52 | 2929 | 2930 | 2931 |
|--|---|---|--|---|--|--|---|--|--|---|--|---|---|--|--|--|---|------|------|------|

STATE OF CALIFORNIA
HIGHWAY TRANSPORTATION AGENCY
DEPARTMENT OF PUBLIC WORKS
DIVISION OF HIGHWAYS
ROAD: 7-LA-5
(Old 7-LA-4-LA)

RIGHT OF WAY MAP

PIERCE ST. (PM 38.25)
TO
PAXTON ST. (PM 39.08)

F.M. 20311 B.3. OF 3

BASIS OF BEARING TAKEN FOR THIS MAP: \angle VAN NUYS BLVD.
N48°45'09"E, PAC. 6-L-23, TO PAC. 6-K-26
MONUMENTATION FROM C.C.M. 22-74 REV. 12-60, AND
"A" NOTES 22.004, 22.005

REPRODUCIBLE COPY FILED WITH L.A. CO. SURVEYOR (12-64)

F-1299

FILED MAP NO. 50311