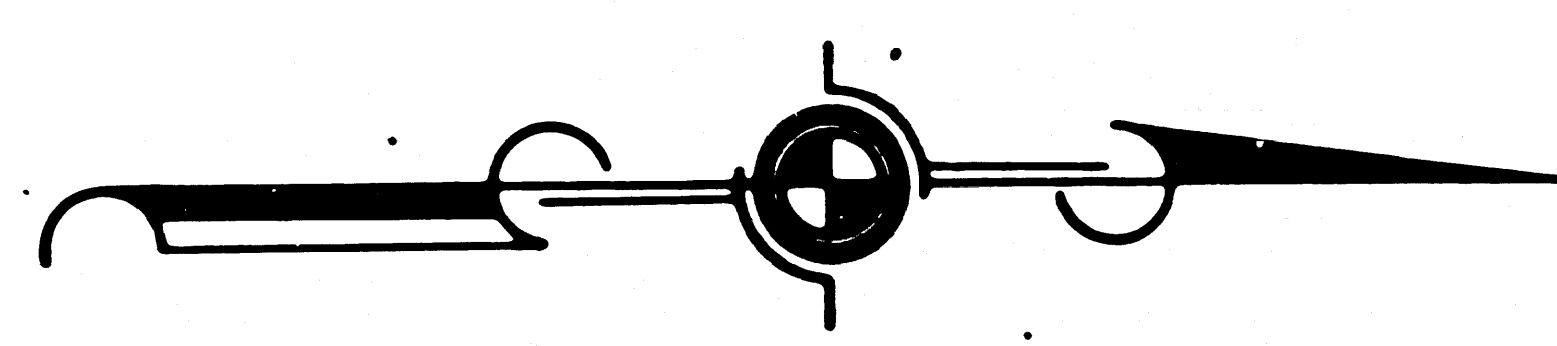


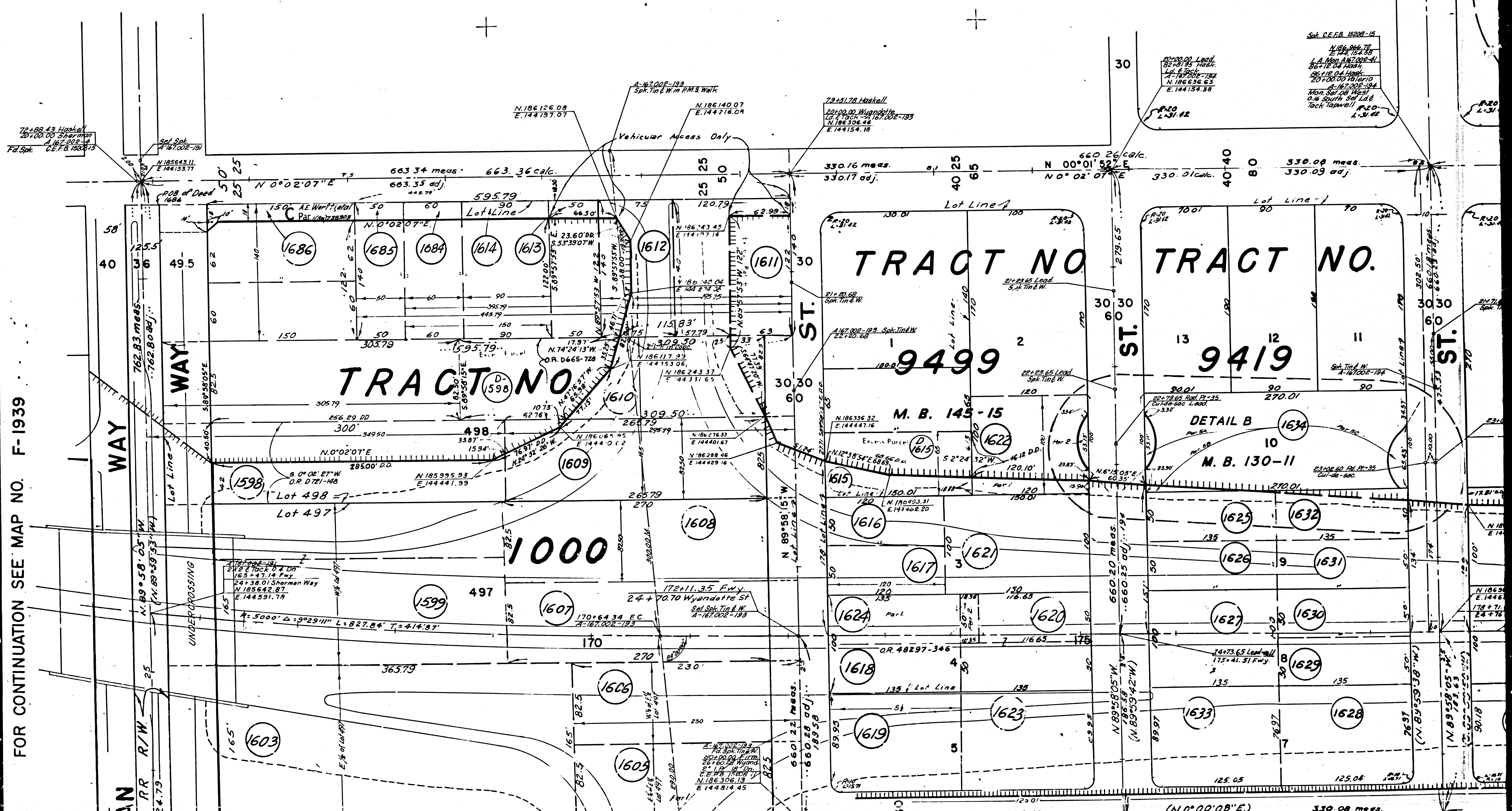
FOR CONTINUATION SEE MAP NO. F-1939



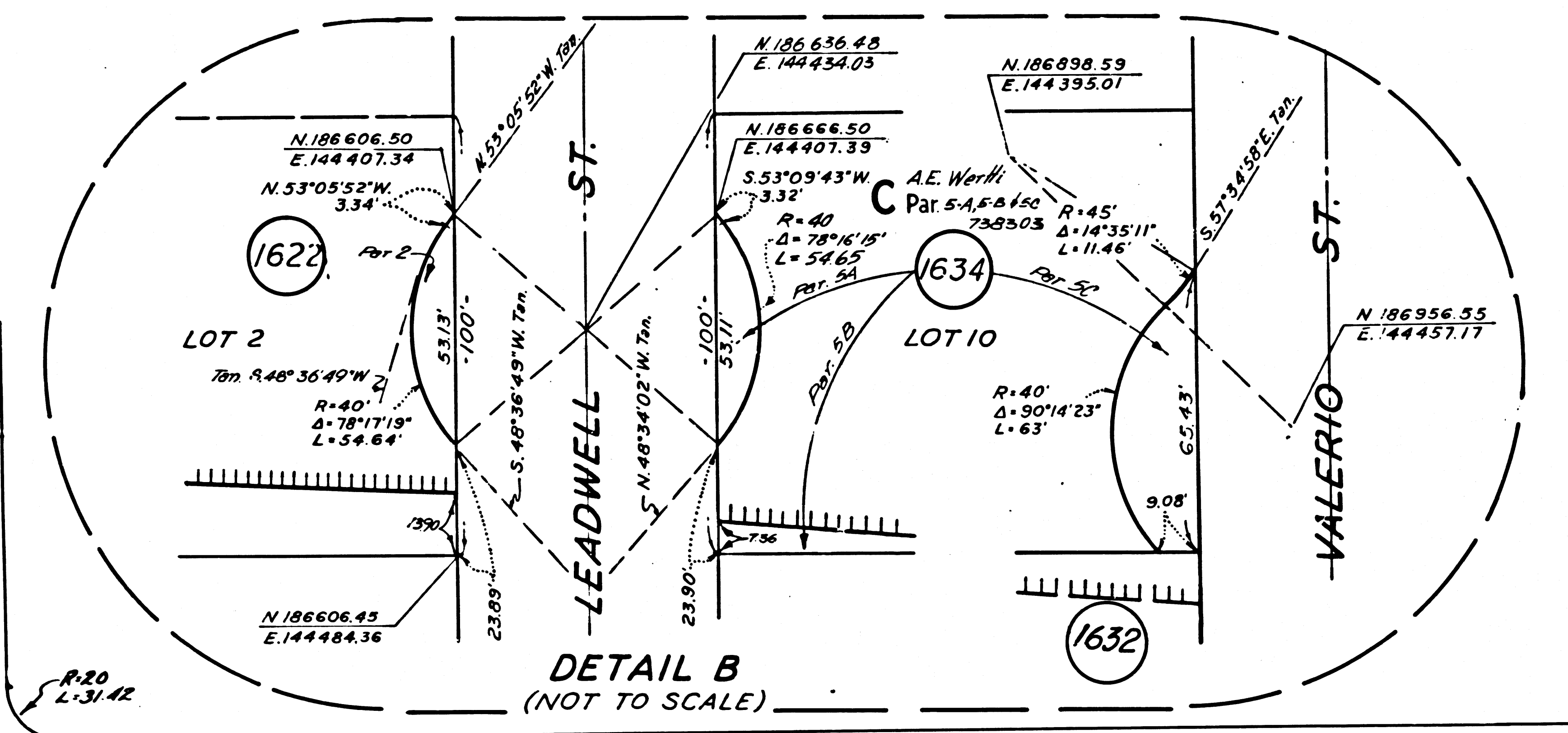
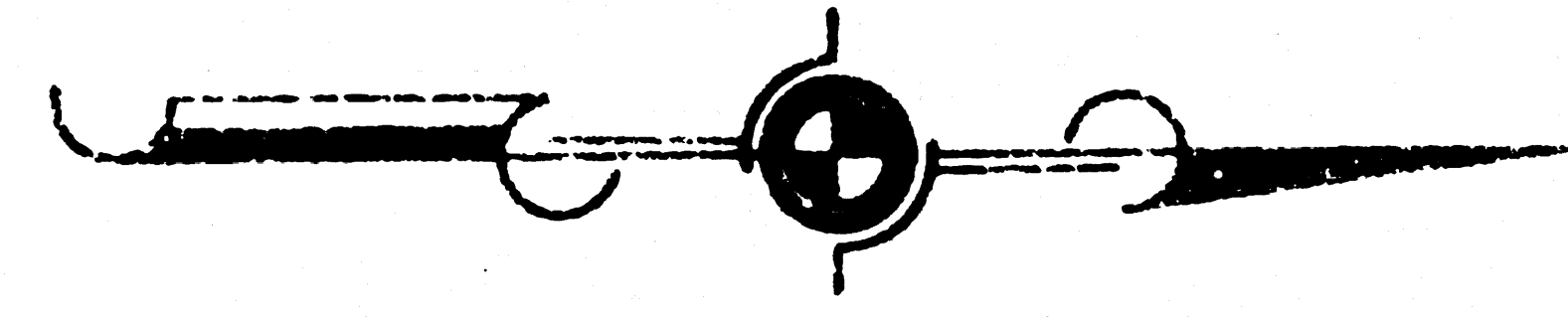
R A N C H O

F.M. 20315

AI OF 6

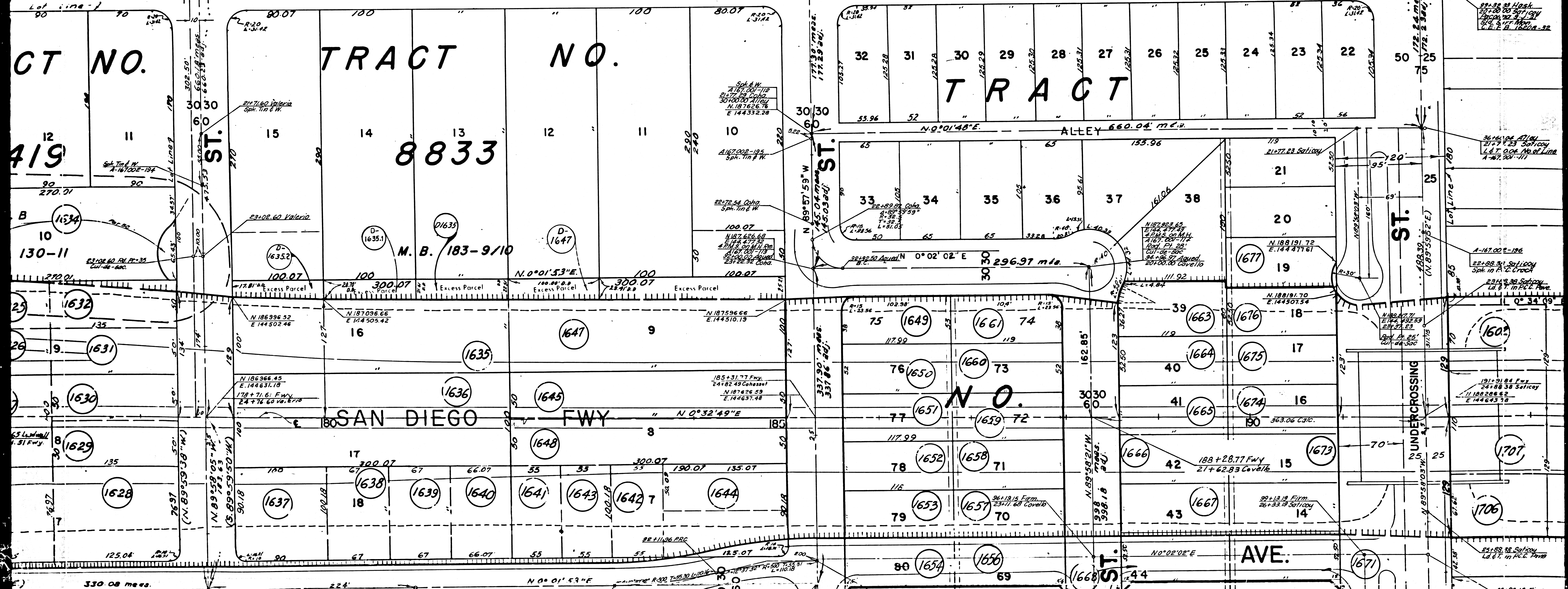


E X - M I S S



Sol. C.E.F.A. 1509-15
N 186 606.50
E 144 407.34
N 53°05'52"W
L 334'
66.116 O.A. Hook
207.0000 to 161.00
L 167.000-184
Mon. Sol. of West
O.W. South Sol. of Ld. B
Tech. Tapwell R.20
L.31.42

N 187 626.87
E 144 154.39
Dip. 10.1115
L 167.000-184
Mon. Sol. of West
O.W. South Sol. of Ld. B
Tech. Tapwell R.20
L.31.42



CT NO.

TRACT NO.

TRACT

419

8833

TRACT

130-11

M. B. 183-9/10

N O.

330.08 meas.

N 0° 01' 53" E

ST.

AVE.

1571

1706

F.M. 20315

A3 OF 6

M I S S I O N D E S A N F E R N A M

TRACT NO. 10812

M.B. 187-47/48

STAGG

Spk. Tin & W.
112+52.85 Haskell
20+00.00 Stagg

HASKELL AVE.

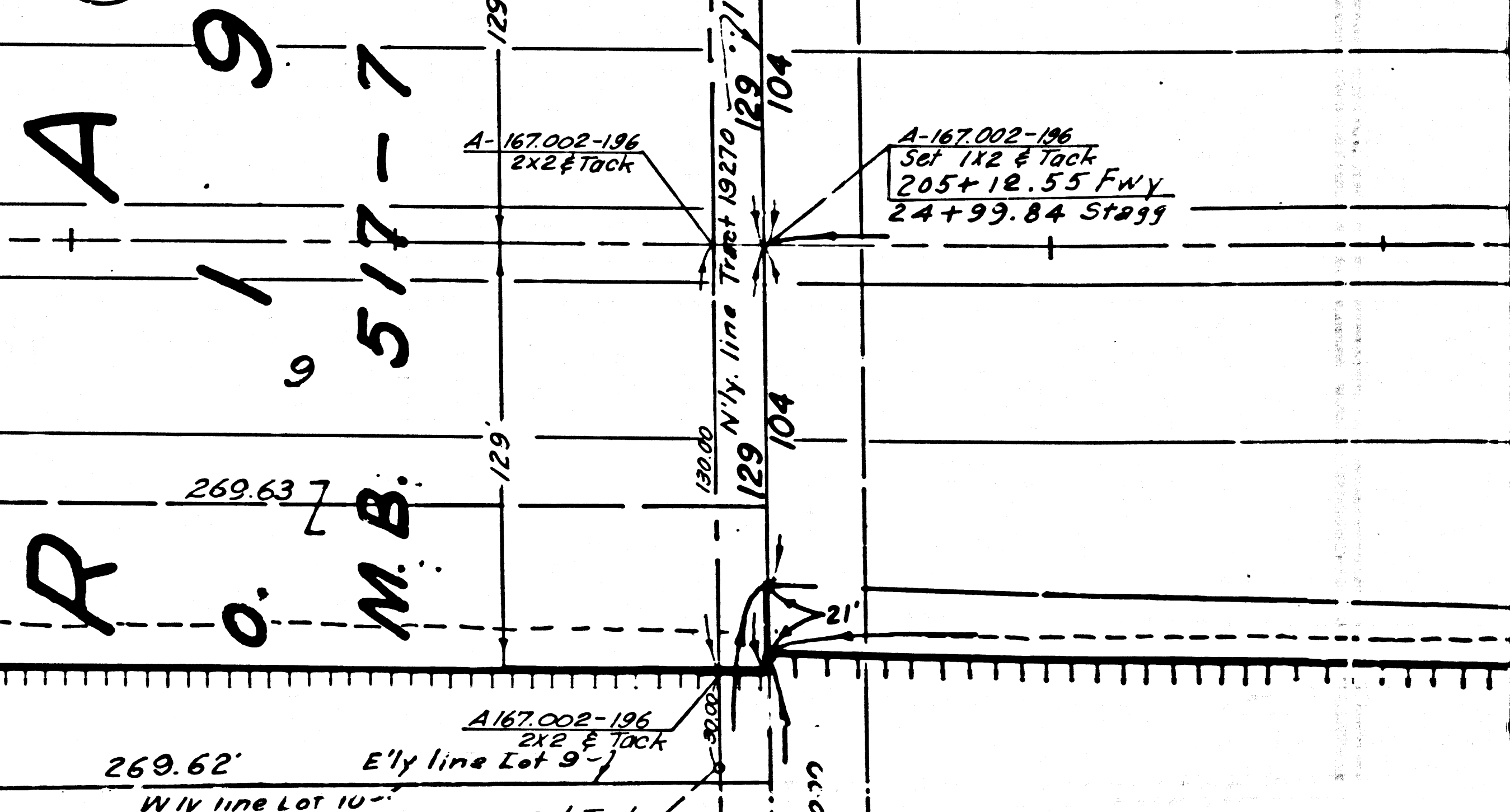
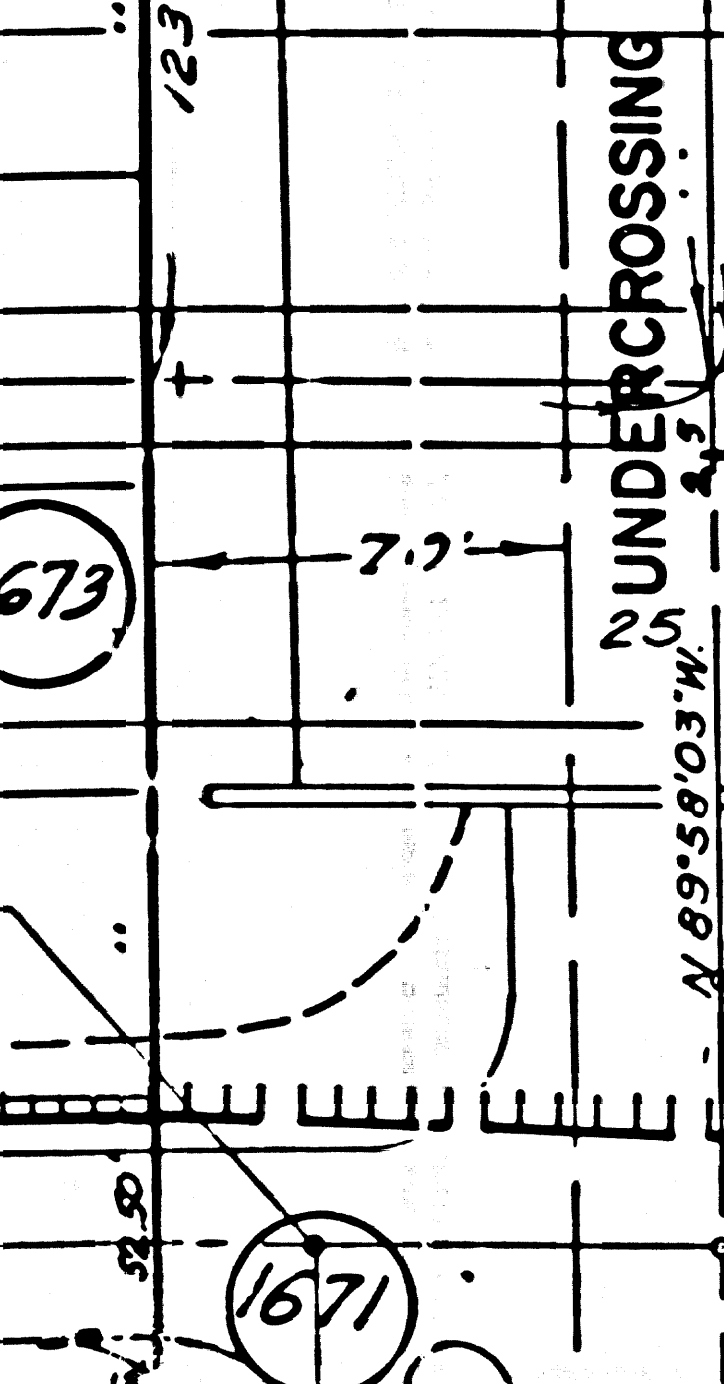
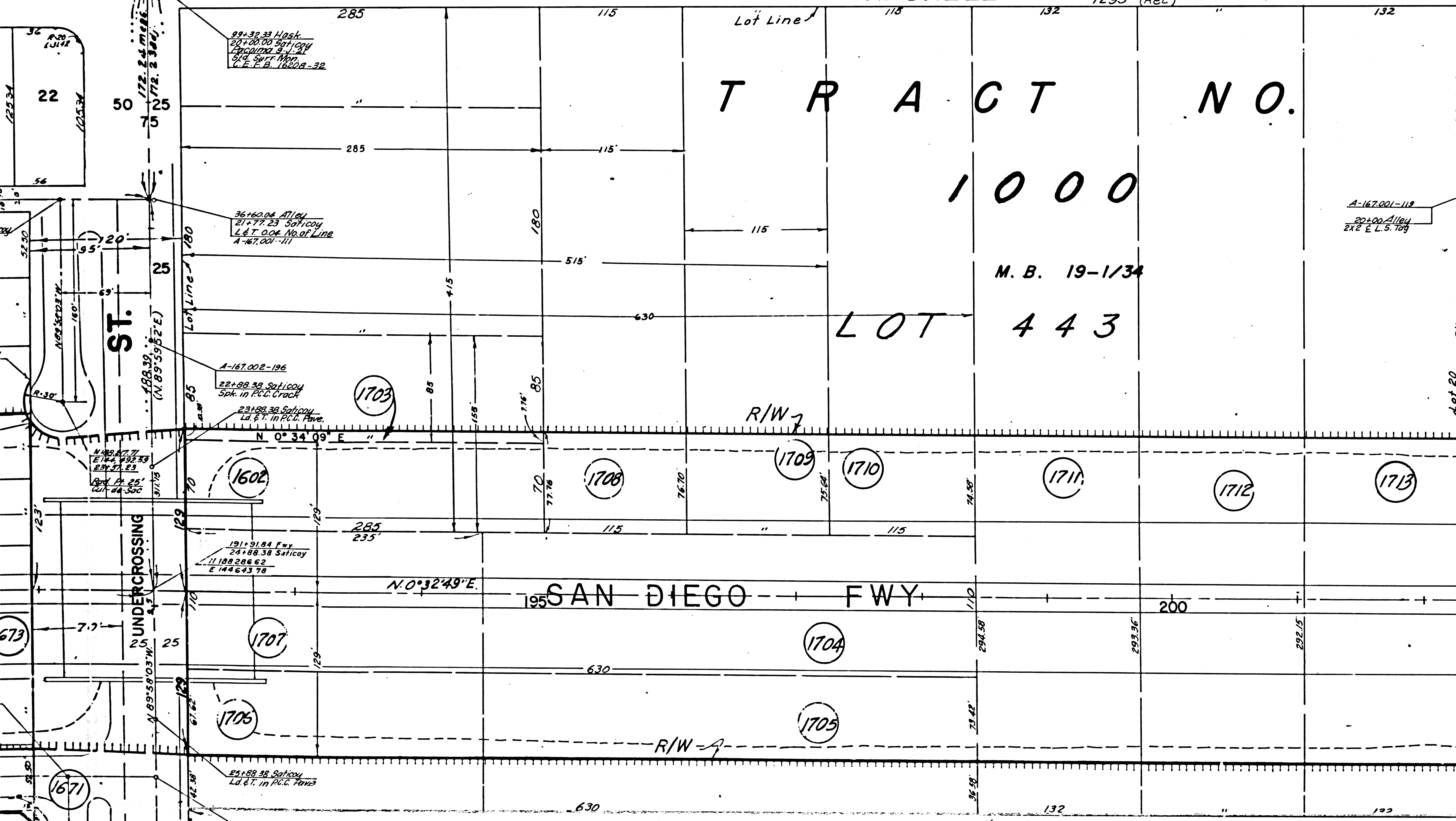
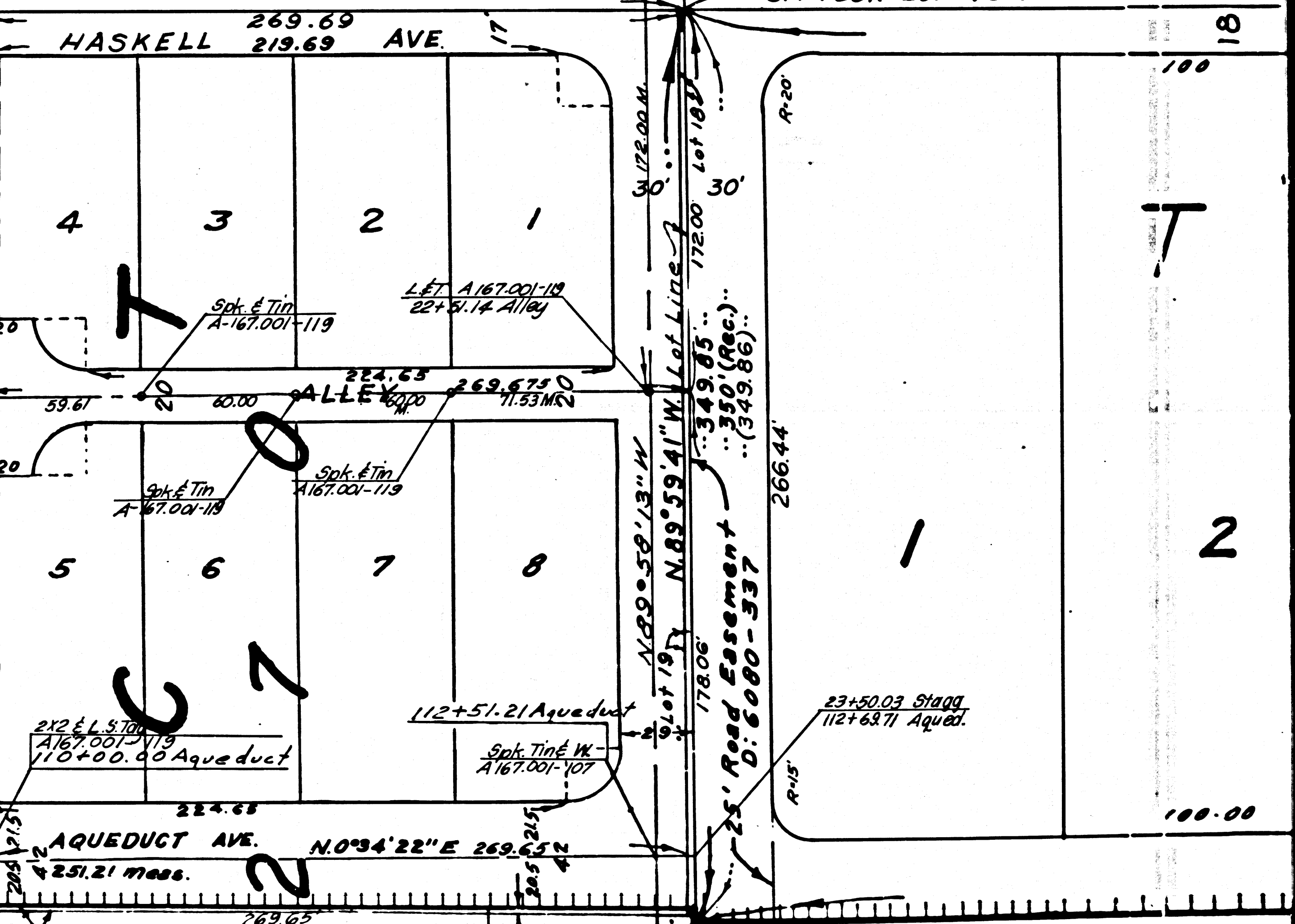
(N 0°02'29" E)
N 0°02'59" E

1302.06 meas.
1302.12 adj.

TRACT NO. 1000

M.B. 19-1/34

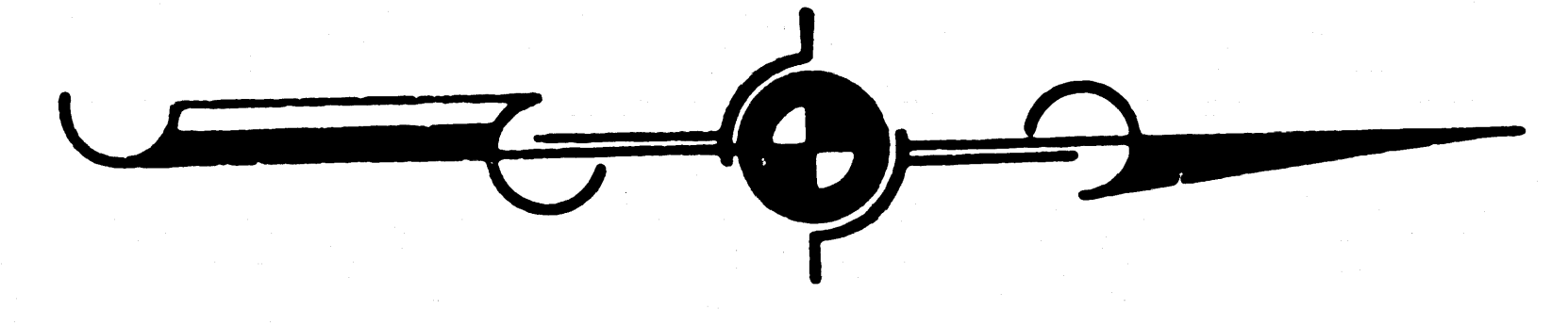
LOT 443



F.M. 20315

A4 OF 6

R N A N D O



STAGG 30

433

HASKELL AVE.

T R A C T N O. 2 4 1 9 0

1 2 3 4 5 6 7 8 9 10 11 12 13 14 15

M B 645 39/41

ALLEY

S A N

STATE OF CALIFORNIA ACQUIRED 5-18-55 OR: 47813/267

STRATHERN ST.

OVERHEAD

