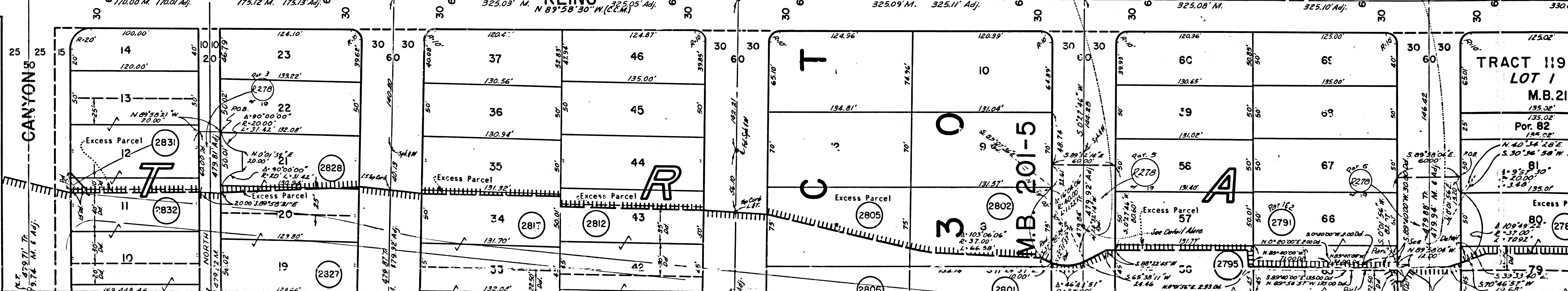
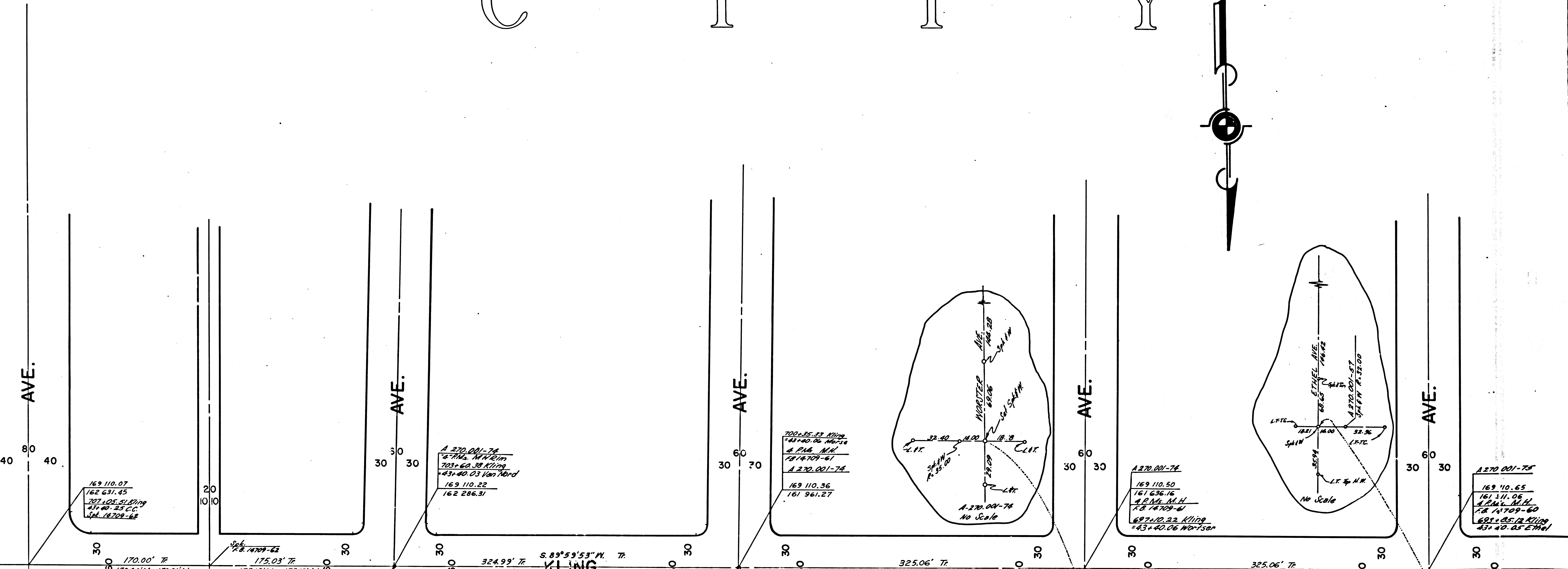
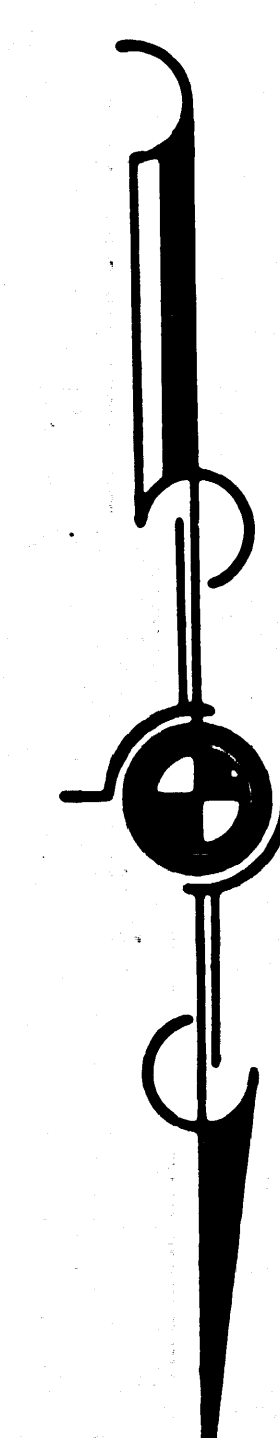


F.M. 20317

A1 OF 4

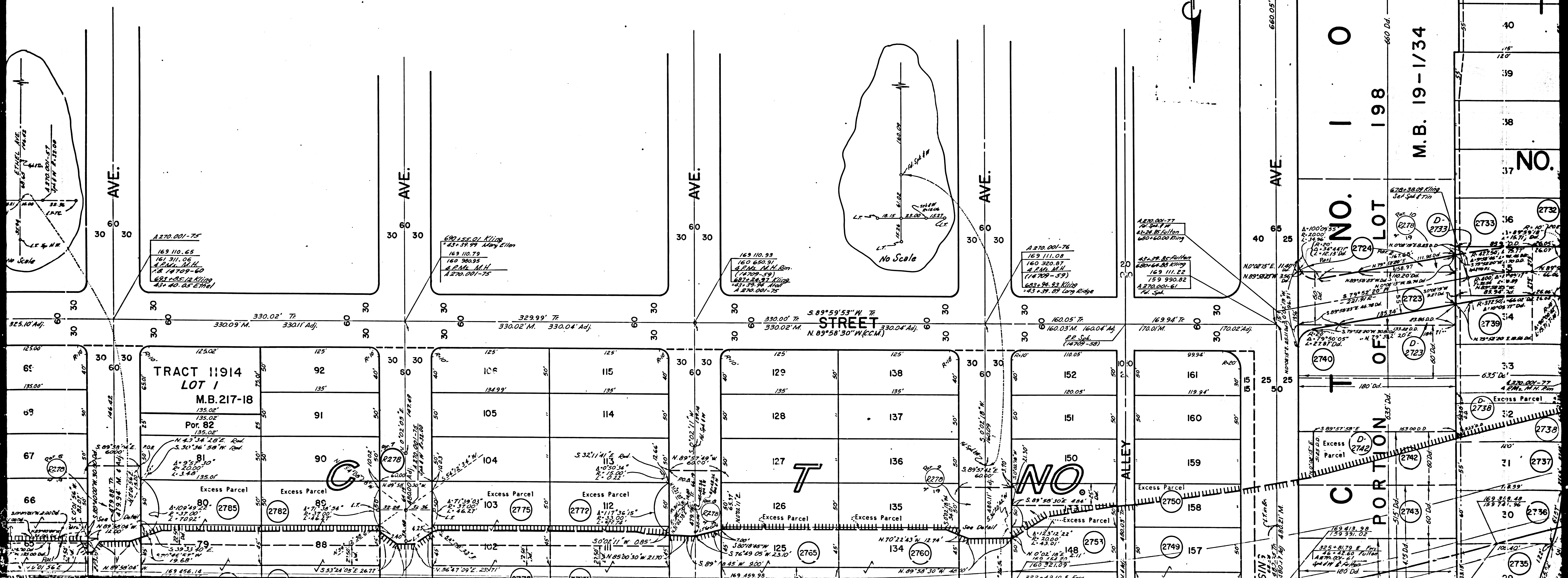
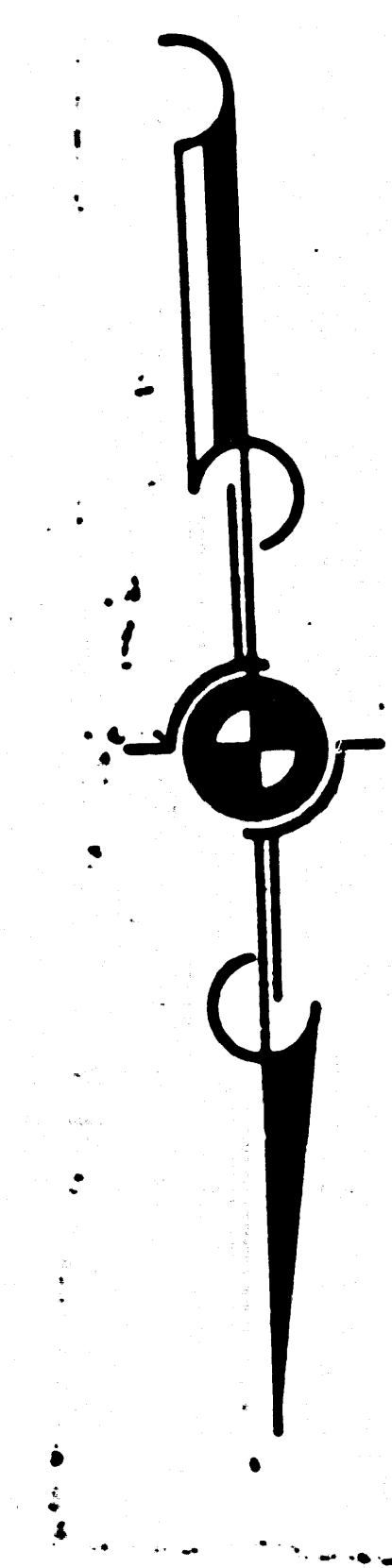
# CITY



F.M. 20317

A2 OF 4

# O F L



A 270.001-75  
163 110.65  
161 311.06  
A.P. 11.11  
1.2 14709-60  
681-25-12 Killop  
43+40.05 E.T.H.

690-55-01 Killop  
43+39.99 Mary Ellen  
163 110.79  
160 380.35  
A.P. 11.11  
A 270.001-75

163 110.33  
160 650.91  
A.P. 11.11  
1.2 14709-59  
681-25-12 Killop  
43+39.99 Mary Ellen  
A 270.001-75

A 270.001-76  
169 111.08  
160 320.87  
A.P. 11.11  
1.2 14709-59  
681-25-12 Killop  
43+39.99 Mary Ellen

A 270.001-77  
169 111.08  
160 320.87  
A.P. 11.11  
1.2 14709-59  
681-25-12 Killop  
43+39.99 Mary Ellen

A 270.001-77  
680-65-42 Smith  
36+77.30 Fulton  
1/4 Sec. 10  
1.2 14709-59  
681-25-12 Killop  
43+39.99 Mary Ellen

A 100-29-35  
1.2 14709-59  
681-25-12 Killop  
43+39.99 Mary Ellen

63+39.99 Mary Ellen  
680-65-42 Smith  
169 111.22  
159 990.82  
A 270.001-61  
1/4 Sec. 10

Excess Parcel  
2742

169 413.98  
159 991.02  
325+81.79 E. Fullon  
1.2 14709-59  
681-25-12 Killop  
43+39.99 Mary Ellen

325.00' Tr  
355.02' (Calc.)

M.B. 19-1/34

NO. 198  
LOT 198  
PORTION OF

NO. 37

NO. 36

NO. 35

NO. 34

NO. 33

NO. 32

NO. 31

NO. 30

NO. 43

NO. 42

NO. 41

NO. 40

NO. 39

NO. 38

NO. 37

NO. 36

NO. 35

NO. 34

NO. 33

NO. 32

NO. 31

NO. 43

NO. 42

NO. 41

NO. 40

NO. 39

NO. 38

NO. 37

NO. 36

NO. 35

NO. 34

NO. 33

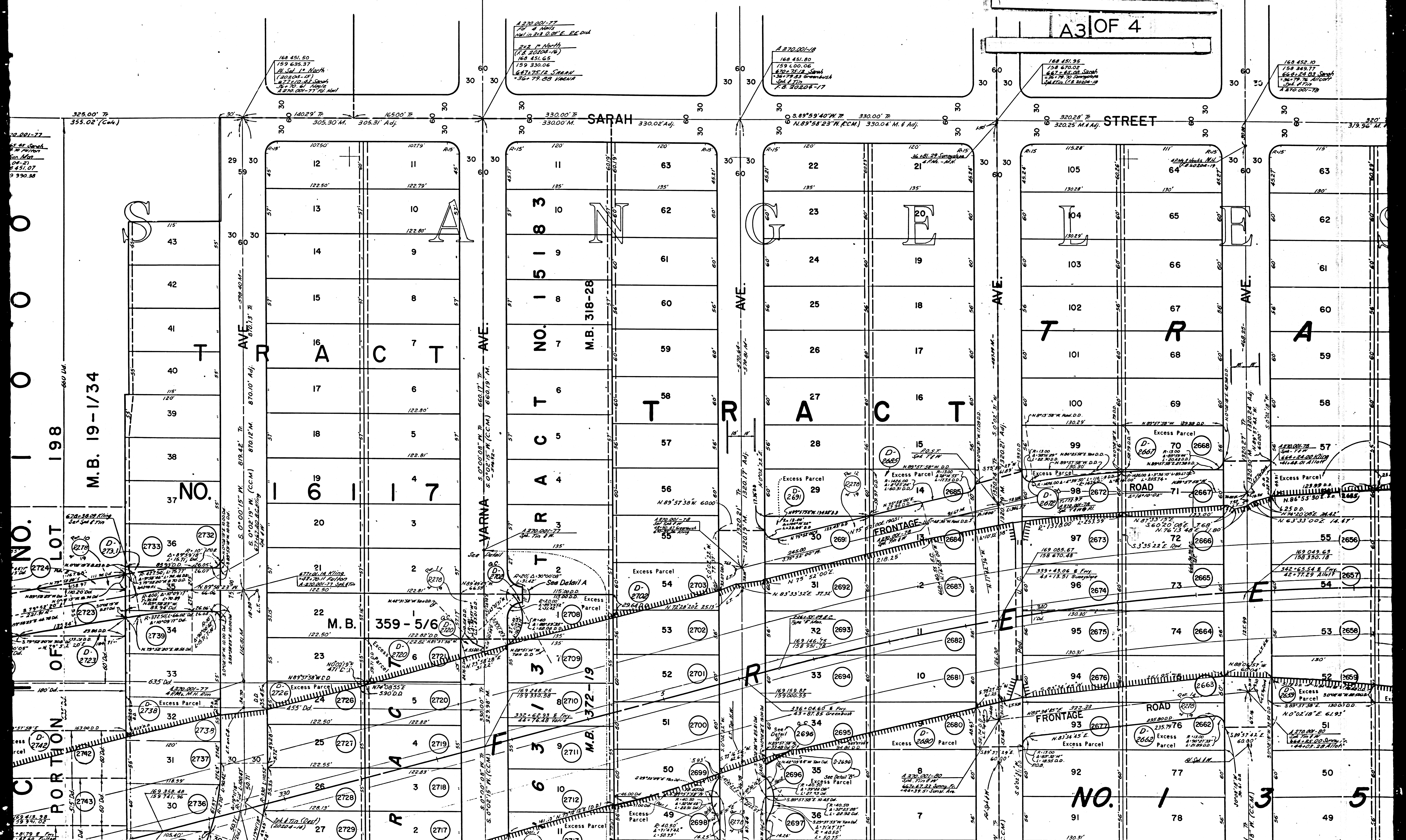
NO. 32

NO. 31

NO. 30

F.M. 20317

A3 OF 4



NO. 198  
 M.B. 19-1/34  
 PORTION OF LOT

YARNA AVE.  
 TARTER AVE.

SARAH STREET  
 TARTER AVE.

NO. 1  
 NO. 2  
 NO. 3  
 NO. 4  
 NO. 5

168 451.50  
 159 635.37  
 Bl. Sol. 1<sup>st</sup> North  
 (2022-04-19)  
 168 451.07  
 159 635.37  
 168 451.07  
 159 635.37

168 451.80  
 159 635.06  
 168 451.80  
 159 635.06  
 168 451.80  
 159 635.06  
 168 451.80  
 159 635.06

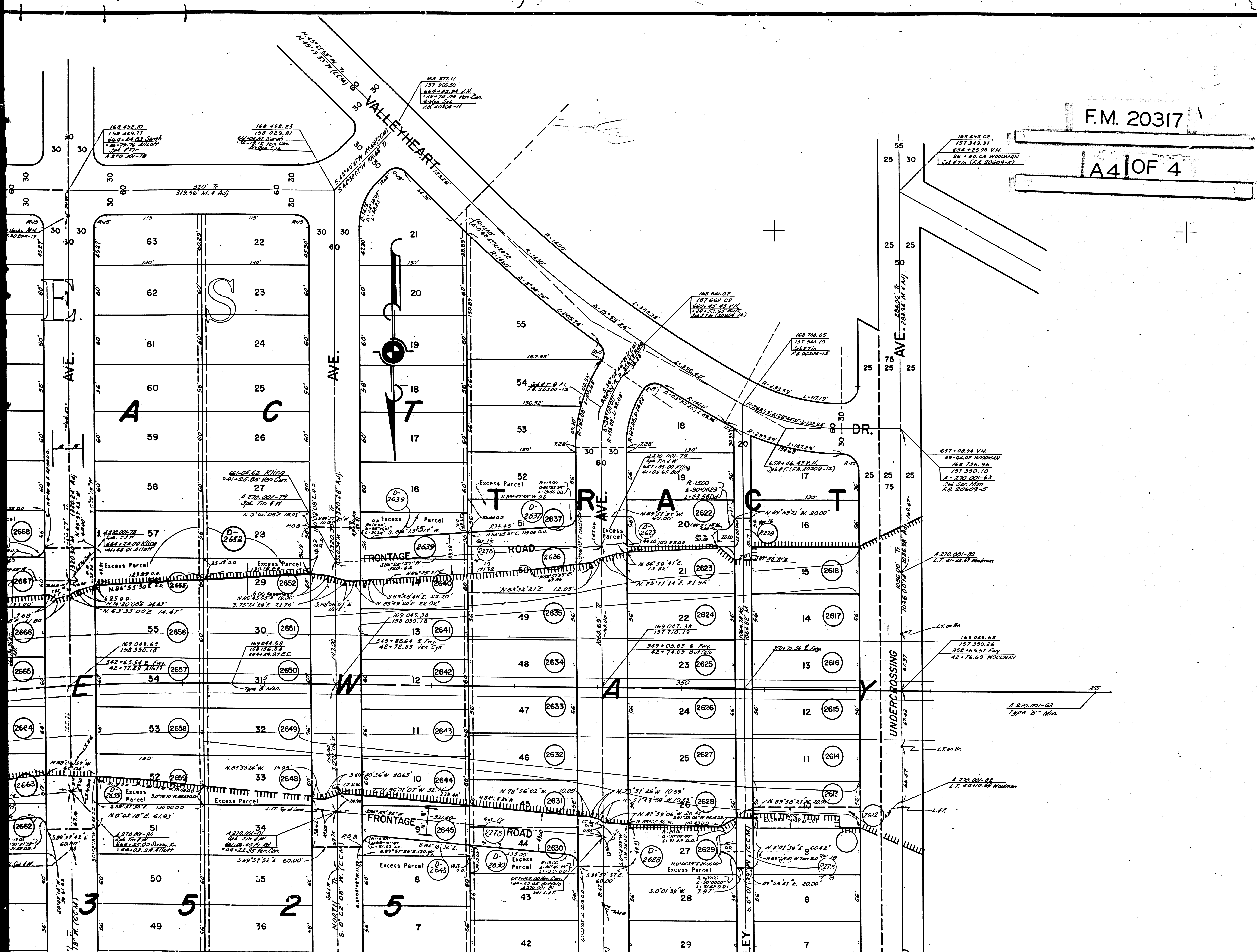
168 451.95  
 159 635.06  
 168 451.95  
 159 635.06  
 168 451.95  
 159 635.06

168 452.10  
 159 635.77  
 168 452.10  
 159 635.77  
 168 452.10  
 159 635.77

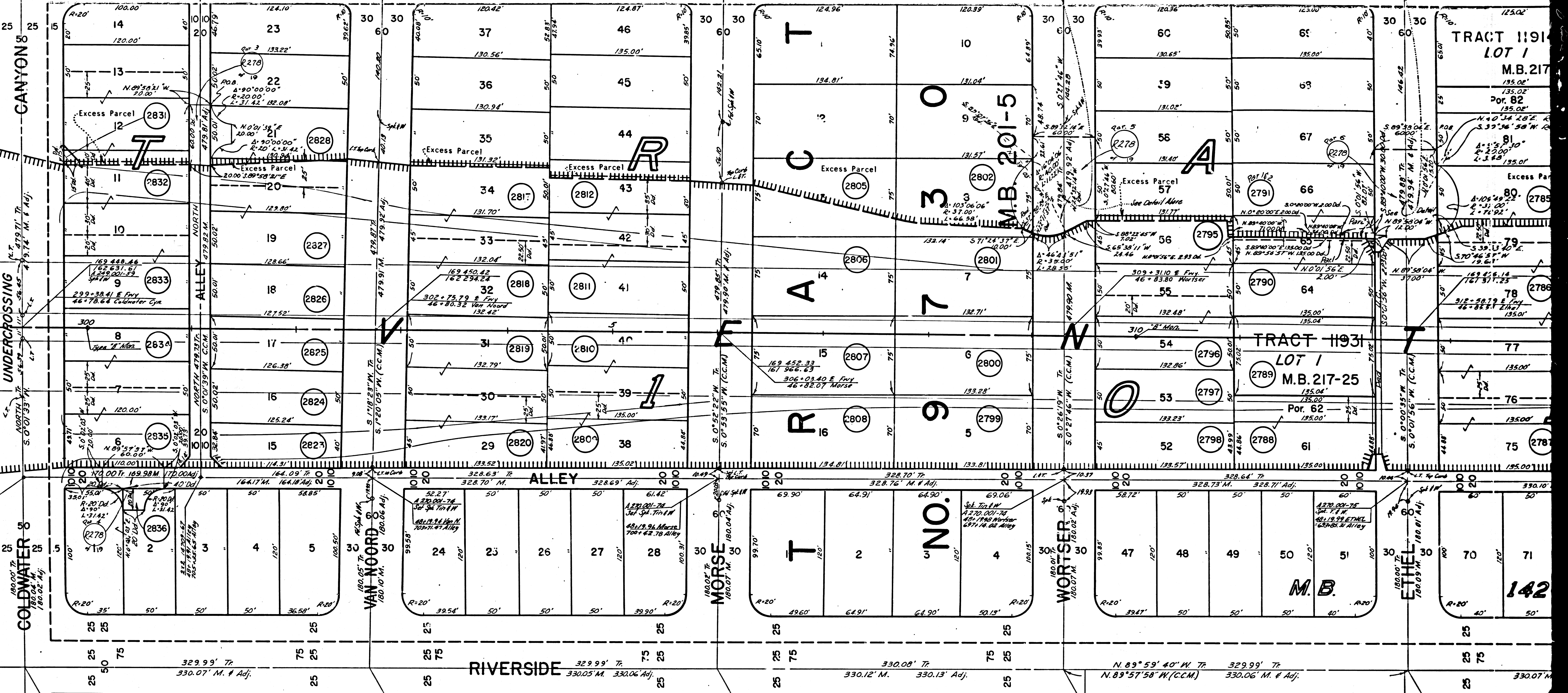
12 11 63  
 13 10 62  
 14 9 61  
 15 8 60  
 16 7 59  
 17 6 58  
 18 5 57  
 19 4 56  
 20 3 55  
 21 2 54  
 22 1 53  
 23 6 52  
 24 5 51  
 25 4 50  
 26 3 49  
 27 2 48  
 28 1 47  
 29 6 46  
 30 5 45  
 31 4 44  
 32 3 43  
 33 2 42  
 34 1 41  
 35 6 40  
 36 5 39  
 37 4 38  
 38 3 37  
 39 2 36  
 40 1 35  
 41 6 34  
 42 5 33  
 43 4 32  
 44 3 31  
 45 2 30  
 46 1 29  
 47 6 28  
 48 5 27  
 49 4 26  
 50 3 25  
 51 2 24  
 52 1 23  
 53 6 22  
 54 5 21  
 55 4 20  
 56 3 19  
 57 2 18  
 58 1 17  
 59 6 16  
 60 5 15  
 61 4 14  
 62 3 13  
 63 2 12  
 64 1 11  
 65 6 10  
 66 5 9  
 67 4 8  
 68 3 7  
 69 2 6  
 70 1 5  
 71 6 4  
 72 5 3  
 73 4 2  
 74 3 1  
 75 2 0  
 76 1 0  
 77 6 0  
 78 5 0  
 79 4 0  
 80 3 0  
 81 2 0  
 82 1 0  
 83 6 0  
 84 5 0  
 85 4 0  
 86 3 0  
 87 2 0  
 88 1 0  
 89 6 0  
 90 5 0  
 91 4 0  
 92 3 0  
 93 2 0  
 94 1 0  
 95 6 0  
 96 5 0  
 97 4 0  
 98 3 0  
 99 2 0  
 100 1 0  
 101 6 0  
 102 5 0  
 103 4 0  
 104 3 0  
 105 2 0  
 106 1 0  
 107 6 0  
 108 5 0  
 109 4 0  
 110 3 0  
 111 2 0  
 112 1 0  
 113 6 0  
 114 5 0  
 115 4 0

F.M. 20317

A4 OF 4



FOR CONTINUATION SEE MAP NO F-2205



Notes: See also 1977-78 C.C. 14769-67

169 769.82  
162 631.75  
4 820 021-28  
1400.00  
30.00 C.C.

169 770.02  
162 301.68  
388.75-74 R.D.  
30.00.00 Northward  
4 270.00-74  
147 4709-67

1220.00-74  
21.74-1478-66  
200.45-69 R.D.  
30.00.00 Northward  
169 770.21  
161 971.62

169 770.41  
161 641.49  
697.15-55 R.D.  
30.00.00 Northward  
1400.00  
16 9 170.60  
161 511.45

121.05-69 R.D.  
50.00.00 Ethel  
18 704 65  
16 9 170.60  
16 9 170.60  
161 511.45

Par. 3 State of California  
Rel. 5-31-56  
122580-775, 776

Par. 4 State of California  
Rel. 5-31-56  
122580-776, 777

Note: Par. 1, 2 on map F-2203; Par. 3-18 on this map F-2204; Par. 19 on map F-2205

Par. 5 State of California  
Rel. 5-3-57  
122580-778, 779

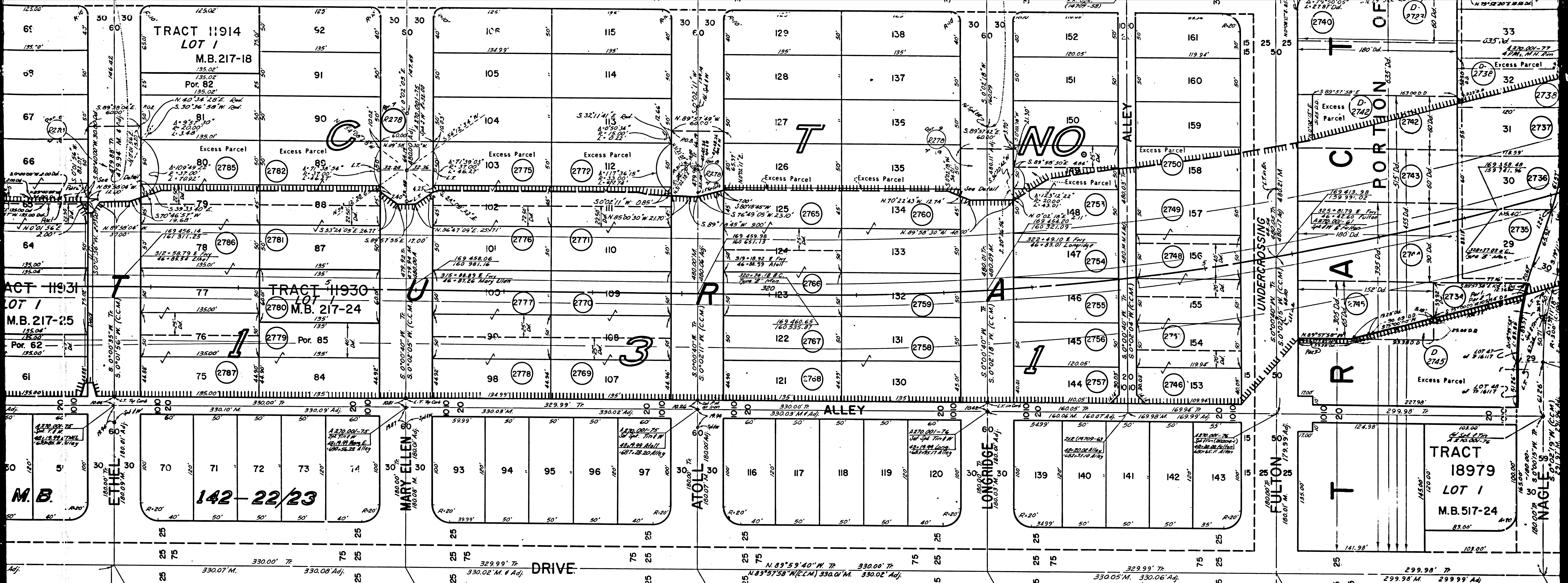
Par. 6 State of California  
Rel. 5-6-54  
122580-779, 780

Note: Par. 1, 2 on map F-2203; Par. 3-18 on this map F-2204; Par. 19 on map F-2205

2823	B.A. Pike, et ux	Fee 5-31-56	31924-306	2827	Evlyn Ferguson	Fee 5-31-56	30428-713	2833	E.F. Mason, et ux	Fee 2-3-56	30226-58	2799	A.H.M. Libby, et al	Fee 6-22-56	31932-406	2807	L.J. Nickerson, et ux	Fee 12-20-56	33774-130	2817	Mary Krock	Fee 2-9-56	30275-404	2779	B.D. Reynolds, et ux	Fee 5-3-57	34305-736	2785	B. Greenberg, et ux	Fee 4-24-57	34305-736	2789	Ruth Erna Libby	Fee 3-4-56	30424-278
2824	D.W. Hedrick, et ux	Fee 6-18-56	34822-220	2828	H.E. Shires, et ux	Fee 4-23-57	34290-364	2834	R.J. Stahl, et ux	Fee 4-16-56	30052-176	2800	Sarah Caffo	Fee 4-22-57	34275-182	2808	M.A. Gibson, et ux	Fee 3-16-56	30624-280	2818	Bert Jason, et ux	Fee 3-22-56	30624-280	2780	Audrey Schramm	Fee 6-13-57	34274-162	2786	P.M. Waldron, et ux	Fee 3-27-56	30709-294	2790	J.H. Cohen, et ux	Fee 3-14-56	30266-52
2825	J.N. Wolfe, et ux	Fee 1-23-56	30139-304	2831	C.J. Hurlie, et ux	Fee 4-30-57	D 103-563	2835	G.E. Morrison, et ux	Fee 1-23-56	30183-296	2801	John L. Garner, Jr.	Fee 4-22-57	34275-190	2809	L.C. Driver, et ux	Fee 4-10-56	30283-200	2819	P.J. Ryan, et ux	Fee 1-22-56	30100-418	2781	Vivian V. Steinmetz	Fee 6-3-57	34274-56	2787	Mildred M. Gray	Fee 7-9-57	35005-187	2791	M.M. Lassen, et ux	Fee 2-14-56	30266-52
2826	E.H. Krock, et ux	Fee 2-74-56	30307-30	2832	E.K. Scruggs, et ux	Fee 5-30-57	34263-260	2836	C.H. Hermcke, et ux	Fee 5-13-58	2 98-264	2802	Ida Katherine Harburn	Fee 4-22-57	34275-182	2810	C.A. Nelson, et ux	Fee 5-10-56	31144-208	2820	C.S. Brand, et al	Fee 1-18-56	30071-396	2782	S. Weiss, et ux	Fee 1-31-58	36460-334	2788	C.J. Eastman, Jr., et ux	Fee 2-15-56	30224-304	2795	L.E. Suter, et ux	Fee 9-8-56	32405-222

F.M. 20317

BI OF 4



63 64 65 66 67 68 69 70 71 72 73 74  
 75 76 77 78 79 80 81 82 83 84 85 86 87 88 89 90 91 92  
 93 94 95 96 97 98 99 100 101 102 103 104 105 106  
 107 108 109 110 111 112 113 114 115 116 117 118 119 120  
 121 122 123 124 125 126 127 128 129 130 131 132 133 134 135  
 136 137 138 139 140 141 142 143 144 145 146 147 148 149 150  
 151 152 153 154 155 156 157 158 159 160 161

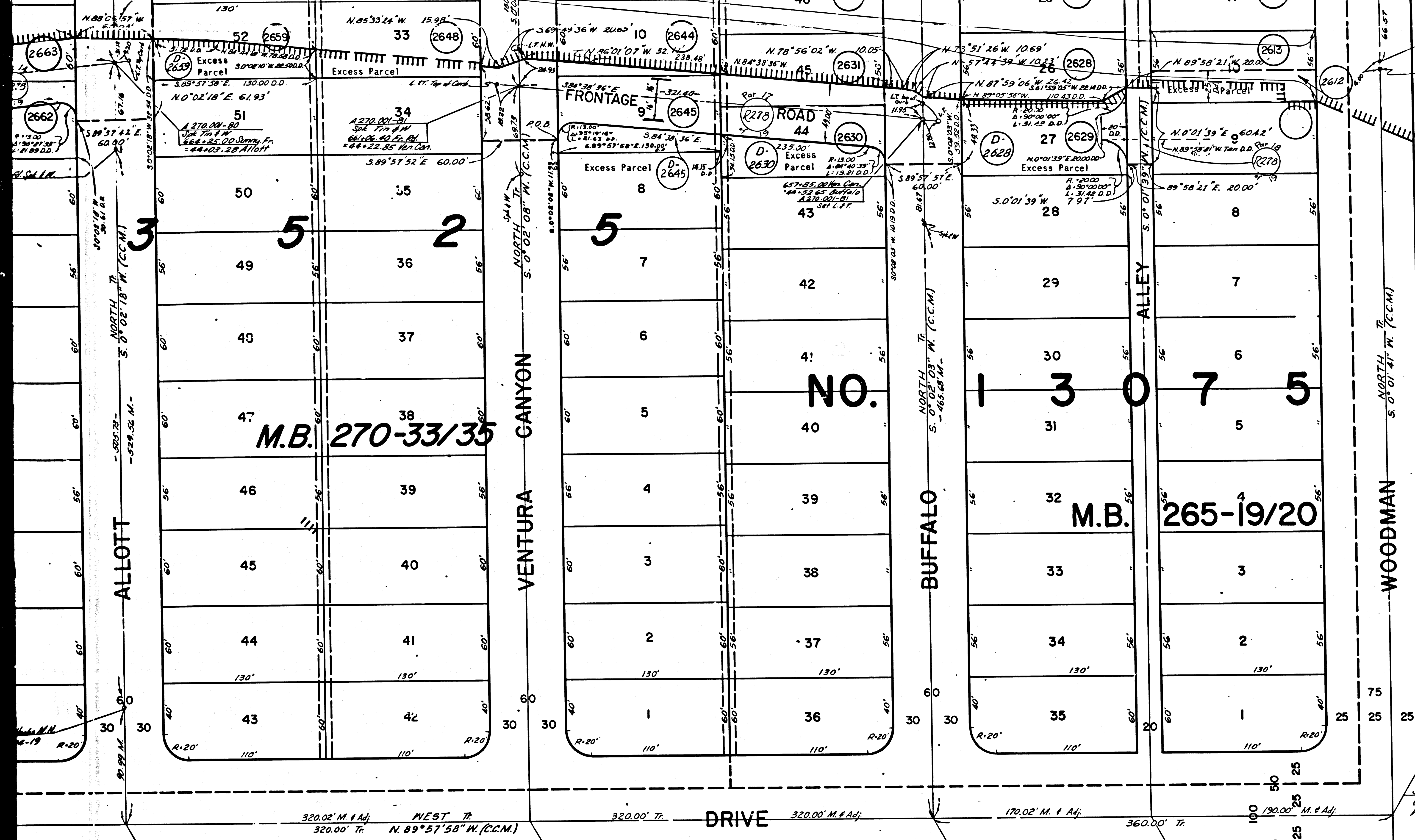
<p>City of Los Angeles 580-778, 779 State to City of Los Angeles D2580-778, 780</p> <p>2775 Ruth Erna Lacey Fee 3-16-56 30684-278</p> <p>2776 N. Pisani, et ux Fee 1-20-56 30100-474</p> <p>2777 J.H. Cohen, et ux Fee 3-16-56 50566-92</p> <p>2778 J.B. Price, Jr., et ux Fee 1-6-56 50413-337</p> <p>2779 M.M. Lassen, et ux Fee 2-25-56 50505-187</p> <p>2780 L.F. Soter, et ux Fee 5-26-56 52405-220</p>	<p>City of Los Angeles 580-778, 779 State to City of Los Angeles D2580-781, 782</p> <p>2776 F.F. Hanks, et ux Fee 3-28-55 43084-205</p> <p>2777 L.M. Powell, et ux Fee 3-22-56 50871-328</p> <p>2778 C.R. Huret, et ux Fee 2-23-56 50450-214</p> <p>2779 S. Malace, et ux Fee 3-14-56 50597-226</p>	<p>City of Los Angeles 580-778, 779 State to City of Los Angeles D2580-783, 783</p> <p>2776 James C. Jones Fee 5-13-57 55602-236</p> <p>2777 A.E. Flock, Jr., et ux Fee 2-28-56 50458-78</p> <p>2778 Harriet S. Crane Fee 8-26-57 54381-236</p> <p>2779 R.K. Lovell, et ux Fee 4-2-57 54783-282</p>	<p>City of Los Angeles 580-778, 779 State to City of Los Angeles D2580-784, 784</p> <p>2776 J. Miller, et ux Fee 10-20-55 54215-234</p> <p>2777 Grace E. Mosler Fee 8-6-56 50813-321</p> <p>2778 F.R. Whitcomb, et ux Fee 8-24-57 54305-724</p> <p>2779 B. Weisman, et ux Fee 2-20-57 54524-33</p>	<p>City of Los Angeles 580-778, 779 State to City of Los Angeles D2580-785, 786</p> <p>2776 R.L. King, et ux Fee 4-20-56 50880-64</p> <p>2777 Helen P. Garrett Fee 3-7-58 D 36-727</p> <p>2778 H.W. Neuman, et ux Fee 4-23-56 50682-754</p>	<p>City of Los Angeles 580-778, 779 State to City of Los Angeles D2580-786, 786</p> <p>2776 R.A. Peterson, et ux Fee 11-1-56 52745-444</p> <p>2777 State to Mary Duante Fee 12-11-56 52745-37</p> <p>2778 Emma Laura Wildung Fee 12-11-56 52745-61</p> <p>2779 George P. Henriksen, et ux Fee 3-24-57 54419-341</p> <p>2780 William S. Whyte, et ux Fee 11-25-56 54497-341</p> <p>2781 State to B.R. Henningsen, et ux Fee 11-27-57 D 1437-267</p>	<p>City of Los Angeles 580-778, 779 State to City of Los Angeles D2580-787, 786</p> <p>2776 Mary Duante Fee 11-28-57 50740-139</p> <p>2777 Riverside Med. Bldg. Fee 12-4-56 50813-244</p> <p>2778 John U. Hood, et ux Fee 12-11-56 50882-192</p> <p>2779 Kenneth J. Galgala, et ux Fee 4-29-56 50882-328</p> <p>2780 Seal Young, et ux Fee 4-29-57 54402-128</p> <p>2781 John D. Durkin, et ux Fee 4-29-57 54402-131</p> <p>2782 Lock E. Hill, et ux Fee 4-29-57 54402-150</p> <p>2783 Melan F. De Muth Fee 4-29-57 54402-150</p>	<p>City of Los Angeles 580-778, 779 State to City of Los Angeles D2580-788, 787</p> <p>2776 State to Riverside Med. Bldg. Fee 1-13-60 D 1437-461</p> <p>2777 Ashley R. Bonds, et ux Fee 4-10-56 50882-70</p> <p>2778 Herbert W. Mc. Howland, et ux Fee 5-28-56 50882-75</p> <p>2779 Gordon S. Mitchell, et ux Fee 3-28-56 51302-163</p> <p>2780 William H. Green, et ux Fee 4-28-56 50882-137</p> <p>2781 Simon P. Fitzpatrick Fee 4-28-56 54401-40</p> <p>2782 Melan F. De Muth Fee 4-29-57 54402-150</p> <p>2783 Robert H. Rogers, et ux Fee 4-29-57 54402-150</p>	<p>City of Los Angeles 580-778, 779 State to City of Los Angeles D2580-789, 788</p> <p>2776 A.H. Perwell Fee 4-29-57 54402-150</p> <p>2777 Herbert G. Lipp Fee 4-29-57 54402-150</p> <p>2778 Howard Ray Fee 4-29-57 54402-150</p> <p>2779 William G. G. Fee 4-29-57 54402-150</p> <p>2780 City of Los Angeles Fee 4-29-57 54402-150</p> <p>2781 Emily M. Hill Fee 4-29-57 54402-150</p> <p>2782 State of California Fee 4-29-57 54402-150</p>
--	---	---	--	---	--	---	--	---

F.M. 20317

B 2 OF 4



FOR CONTINUATION SEE M...



F.M. 20317

B4 OF 4

COORDINATES SHOWN ARE FOR INTERNAL USE OF THE DIVISION OF HIGHWAYS AND ARE TO BE USED FOR REFERENCE ONLY

STATE OF CALIFORNIA  
HIGHWAY TRANSPORTATION AGENCY  
DEPARTMENT OF PUBLIC WORKS  
DIVISION OF HIGHWAYS

ROAD: 7-LA-101  
(Old 7-LA-2-LA-2-(b))

### RIGHT OF WAY MAP COLDWATER CANYON AVE. (PM 13.88) TO WOODMAN AVE. (PM 14.89)

Monumentation From "A" Notes 270.001 and CCM 282.7 (Rev. 8-18-60)

RIVERSIDE DR. Ⓢ N.89°57'58"W. was taken as the Basis of Bearing for this map

REPRODUCIBLE COPY FILED WITH L.A. CO. SURVEYOR 3-65  
RATIO 20/4

1.M.54-A-4 F-2204

- Par. 14 State to City of Los Angeles A-1 8-6-64 D-2580-792, 793, 794
- John M. Krauss et al. 2630
- John M. Krauss et al. 2631
- John M. Krauss et al. 2632
- John M. Krauss et al. 2633
- John M. Krauss et al. 2634
- John M. Krauss et al. 2635
- John M. Krauss et al. 2636
- John M. Krauss et al. 2637
- John M. Krauss et al. 2638
- John M. Krauss et al. 2639
- John M. Krauss et al. 2640
- John M. Krauss et al. 2641
- John M. Krauss et al. 2642
- John M. Krauss et al. 2643
- John M. Krauss et al. 2644
- John M. Krauss et al. 2645
- John M. Krauss et al. 2646
- John M. Krauss et al. 2647
- John M. Krauss et al. 2648
- John M. Krauss et al. 2649
- John M. Krauss et al. 2650
- John M. Krauss et al. 2651
- John M. Krauss et al. 2652
- John M. Krauss et al. 2653
- John M. Krauss et al. 2654
- John M. Krauss et al. 2655
- John M. Krauss et al. 2656
- John M. Krauss et al. 2657
- John M. Krauss et al. 2658
- John M. Krauss et al. 2659
- John M. Krauss et al. 2660
- John M. Krauss et al. 2661
- John M. Krauss et al. 2662
- John M. Krauss et al. 2663
- John M. Krauss et al. 2664
- John M. Krauss et al. 2665
- John M. Krauss et al. 2666
- John M. Krauss et al. 2667
- John M. Krauss et al. 2668
- John M. Krauss et al. 2669
- John M. Krauss et al. 2670
- John M. Krauss et al. 2671
- John M. Krauss et al. 2672
- John M. Krauss et al. 2673
- John M. Krauss et al. 2674
- John M. Krauss et al. 2675
- John M. Krauss et al. 2676
- John M. Krauss et al. 2677
- John M. Krauss et al. 2678
- John M. Krauss et al. 2679
- John M. Krauss et al. 2680
- John M. Krauss et al. 2681
- John M. Krauss et al. 2682
- John M. Krauss et al. 2683
- John M. Krauss et al. 2684
- John M. Krauss et al. 2685
- John M. Krauss et al. 2686
- John M. Krauss et al. 2687
- John M. Krauss et al. 2688
- John M. Krauss et al. 2689
- John M. Krauss et al. 2690
- John M. Krauss et al. 2691
- John M. Krauss et al. 2692
- John M. Krauss et al. 2693
- John M. Krauss et al. 2694
- John M. Krauss et al. 2695
- John M. Krauss et al. 2696
- John M. Krauss et al. 2697
- John M. Krauss et al. 2698
- John M. Krauss et al. 2699
- John M. Krauss et al. 2700

1.1.50.31