

LOS

REGIONS OF SAN DIEGO

WENTWORTH

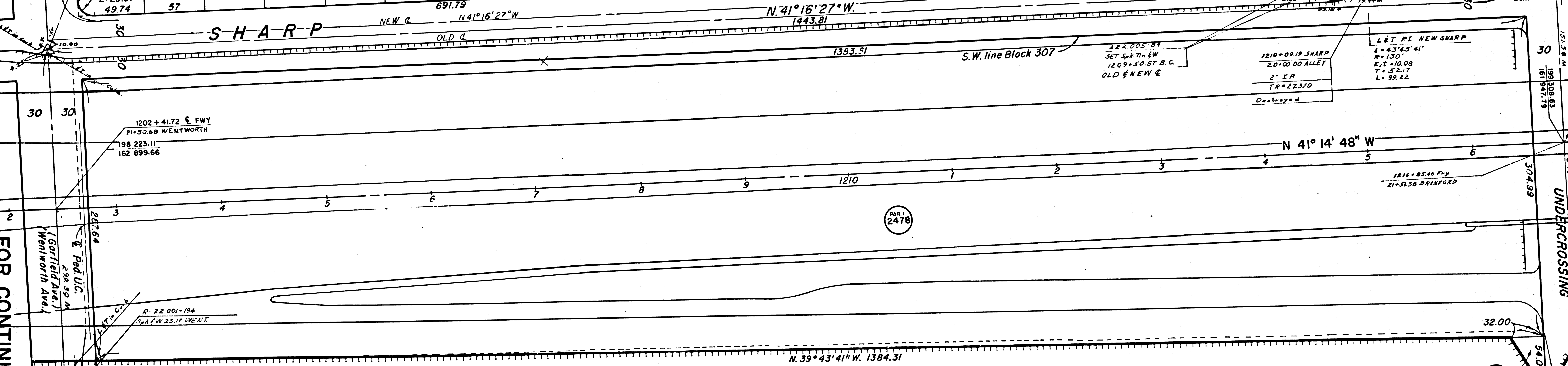
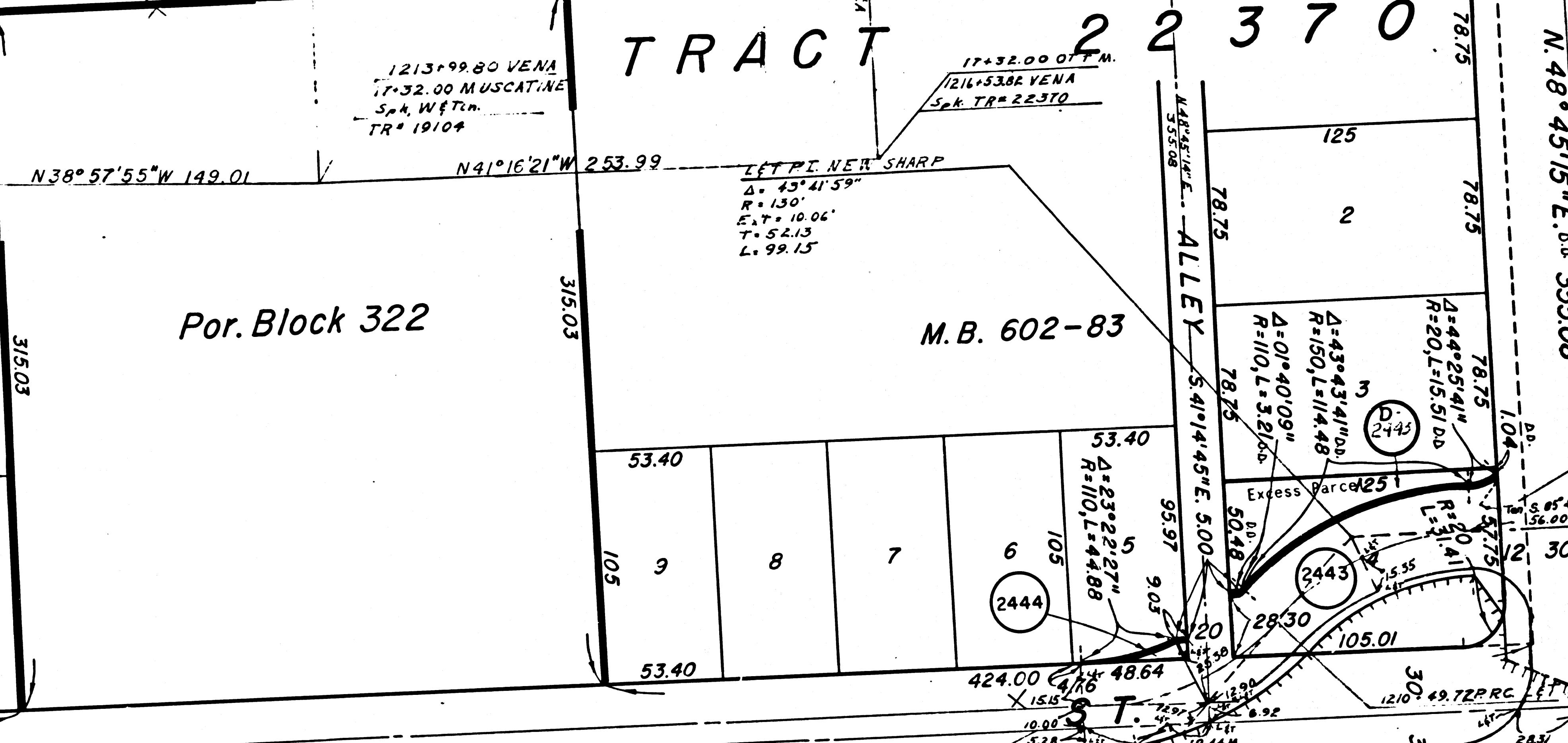
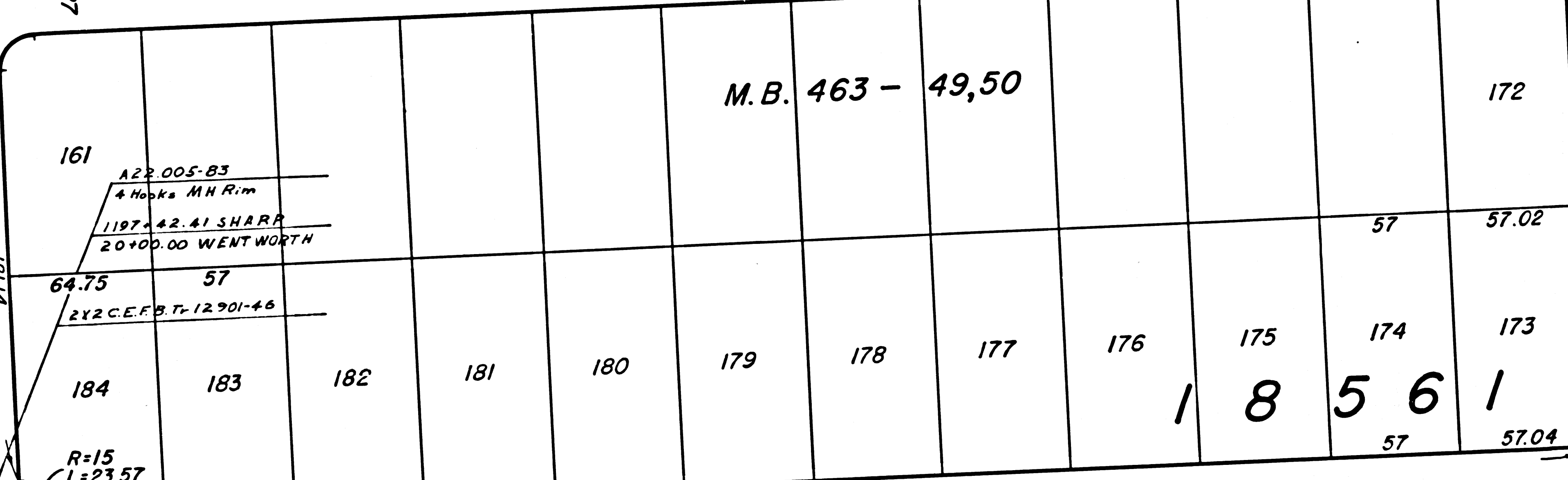
TRACT

VENA

AVE.

TRACT 22370

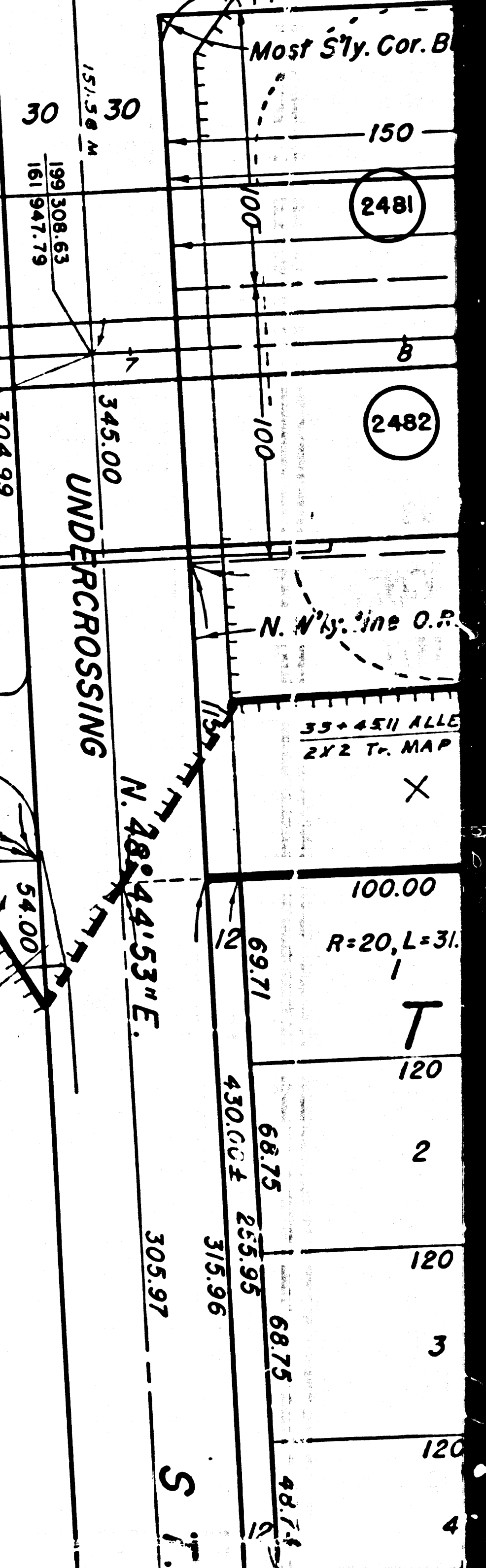
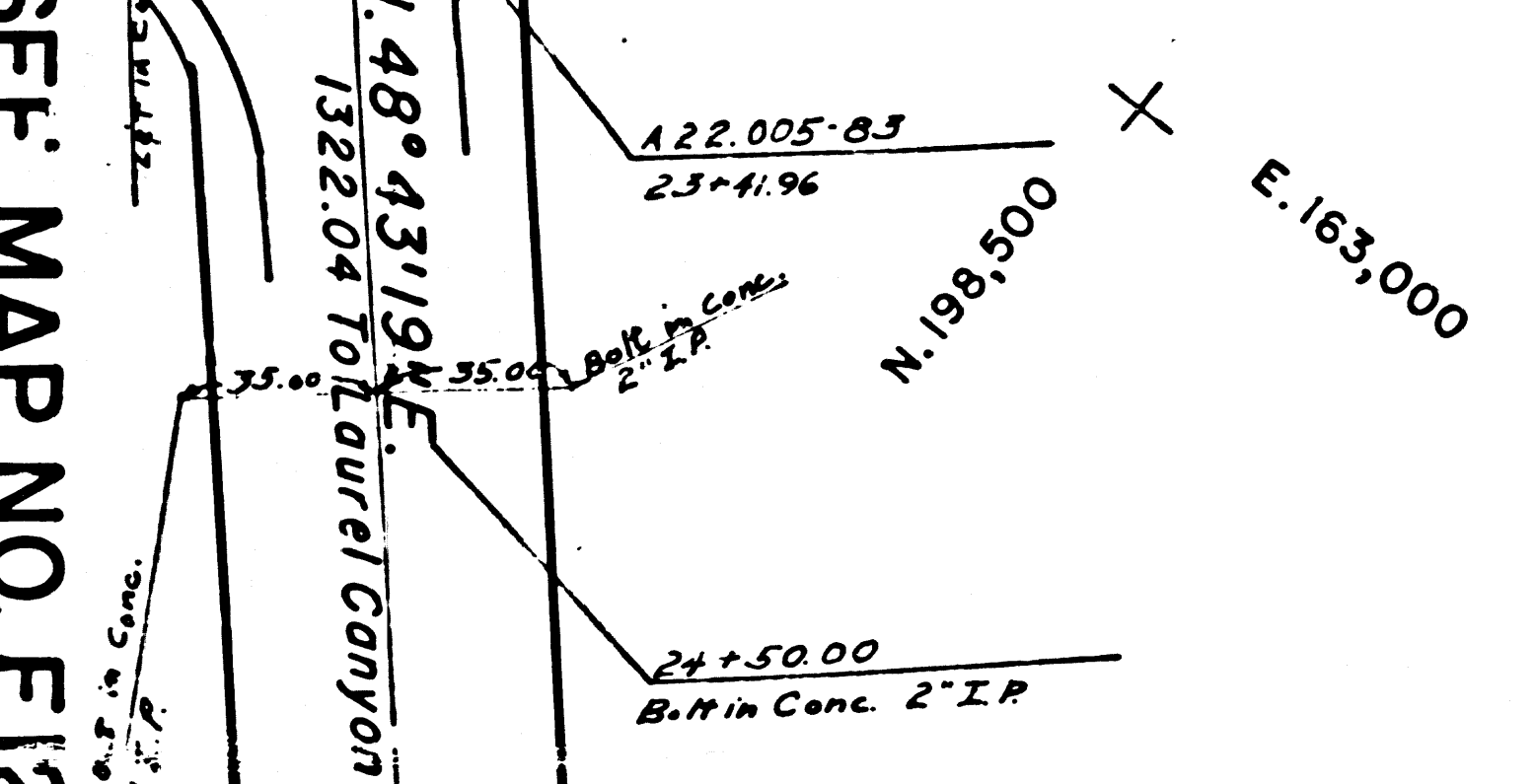
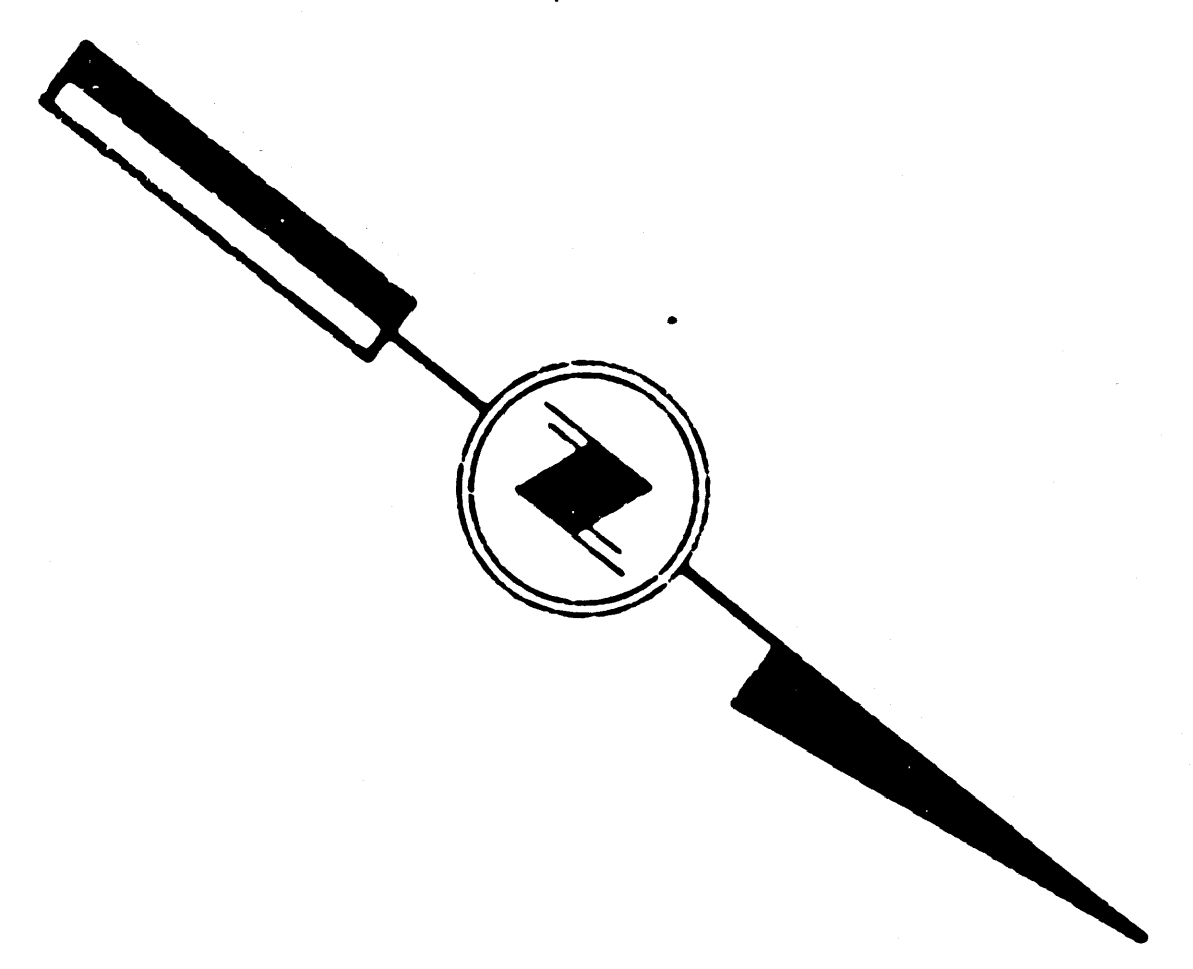
BRANFORD
N 48° 45' 15" E D.D. 35508



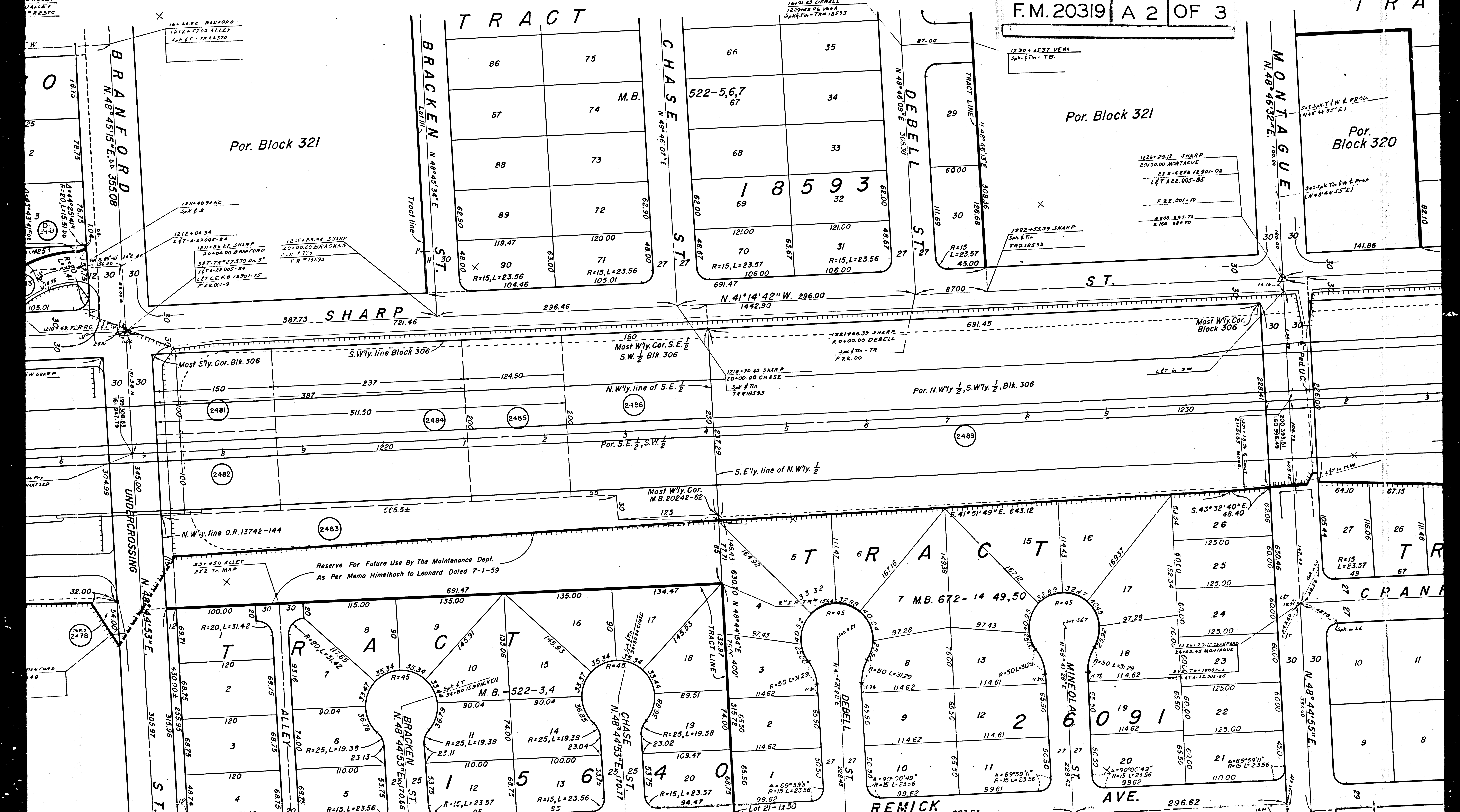
FOR CONTINUATION SEE MAP NO. F12

Block 307
M.R. 37-5 to 16 Inc.

F.M. 20319 | A 1 OF 3



S A N G E L E T R A C T

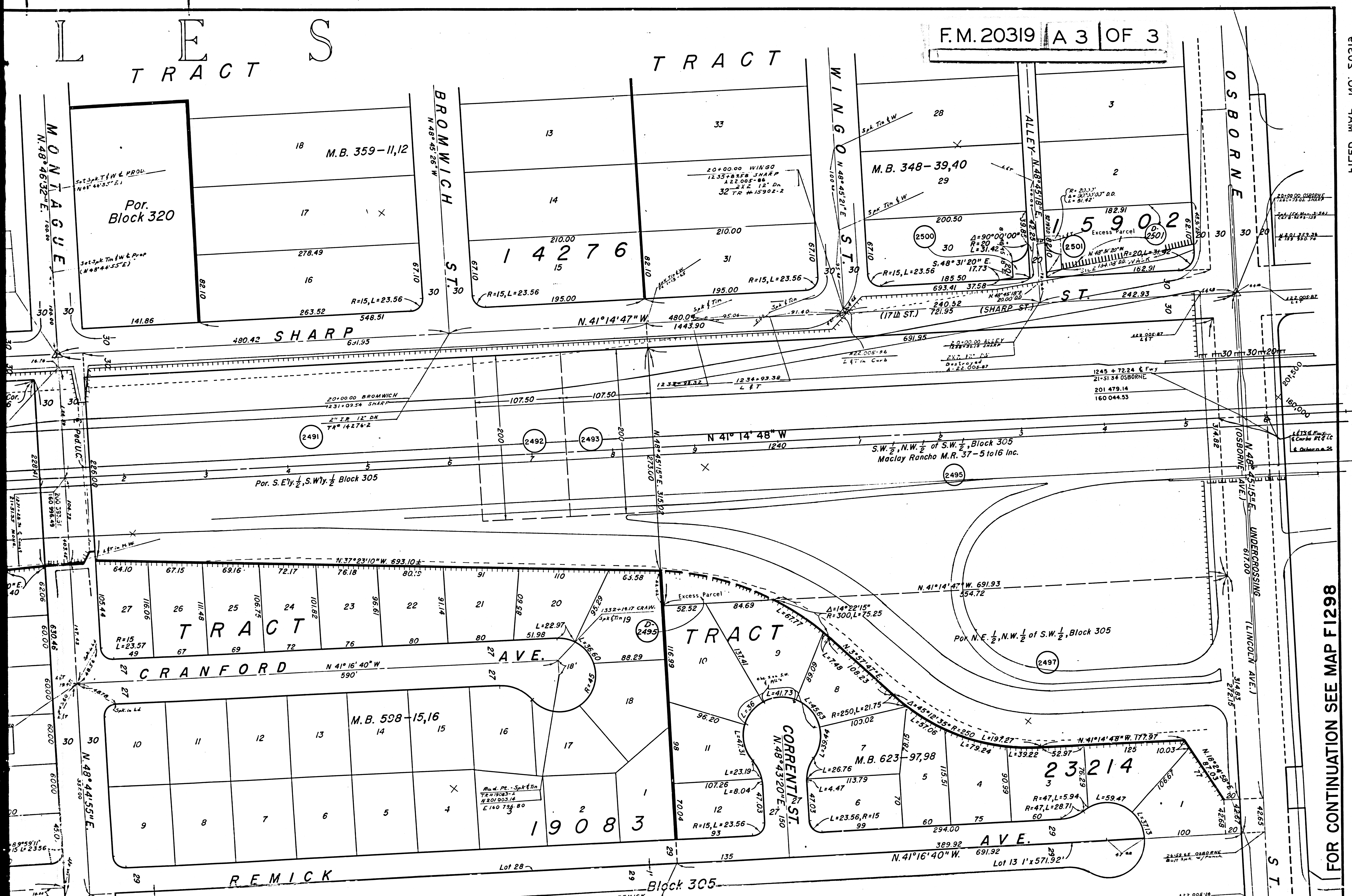


TRACT S

TRACT

F.M. 20319 A 3 OF 3

EGCS ON PAM DATED



FOR CONTINUATION SEE MAP F1298

FOR CONTINUATION SEE MAP NO. F1296

FILED MAP NO. S0318

1202 + 41.72 E Fwy
21+30.68 WENTWORTH
198 223.11
162 899.66

N 41° 14' 48" W

N 39° 43' 41" W, 1384.31

Block 307
M.R. 37-5 to 16 Inc.

122.005-83
23-41.96
N 188.000
E 163.000

1197+ 43.32 LAUCANY
53+22.04 WENTWORTH
S.K.F.C. 530-171
MAP 181-107-R/W 2
Fd. L.F.T.
A 22.005-83
LAUREL CANY. BVD.
N 41° 14' 50" W

23+44.98 BRANFORD
S.T. TR #15640

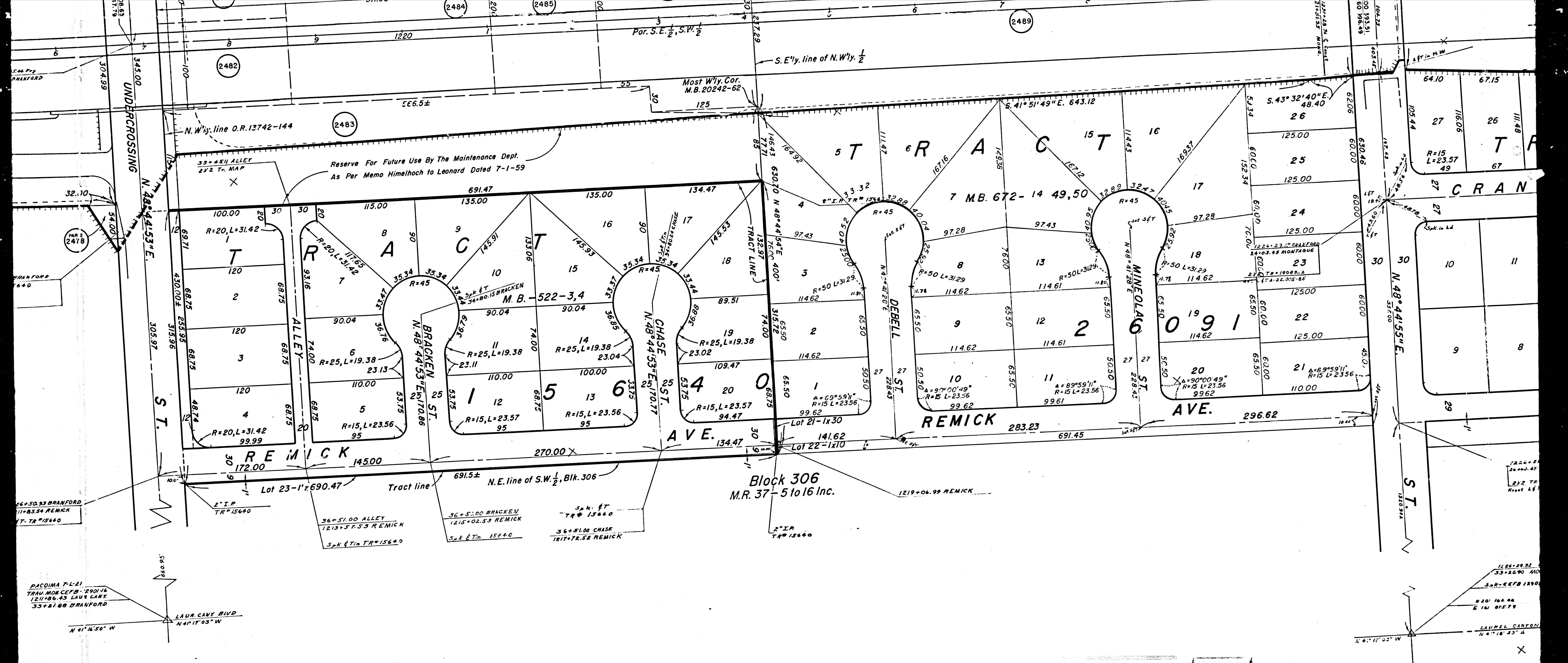
26+50.93 BRANFORD
1211+83.54 REMICK
S.T. TR #15640

PACDIMA T-L-21
TRAU MON CEFB-18901-16
1211+86.43 LAUR CANY
35+21.88 BRANFORD

LAUR. CANY. BVD.
N 41° 14' 50" W

F.M. 20319 | B 1 | OF 3

- 2440 State of Fris-Hansen Co. - 2-7-84
- 2443 Geo. P. Miller, et ux - 12-9-59
- 2444 Western Growth Corp. et al - 6-15-61
- 2478 Roger Jessup Farms - 12-11-58



Block 306
M.R. 37-5 to 16 Inc.

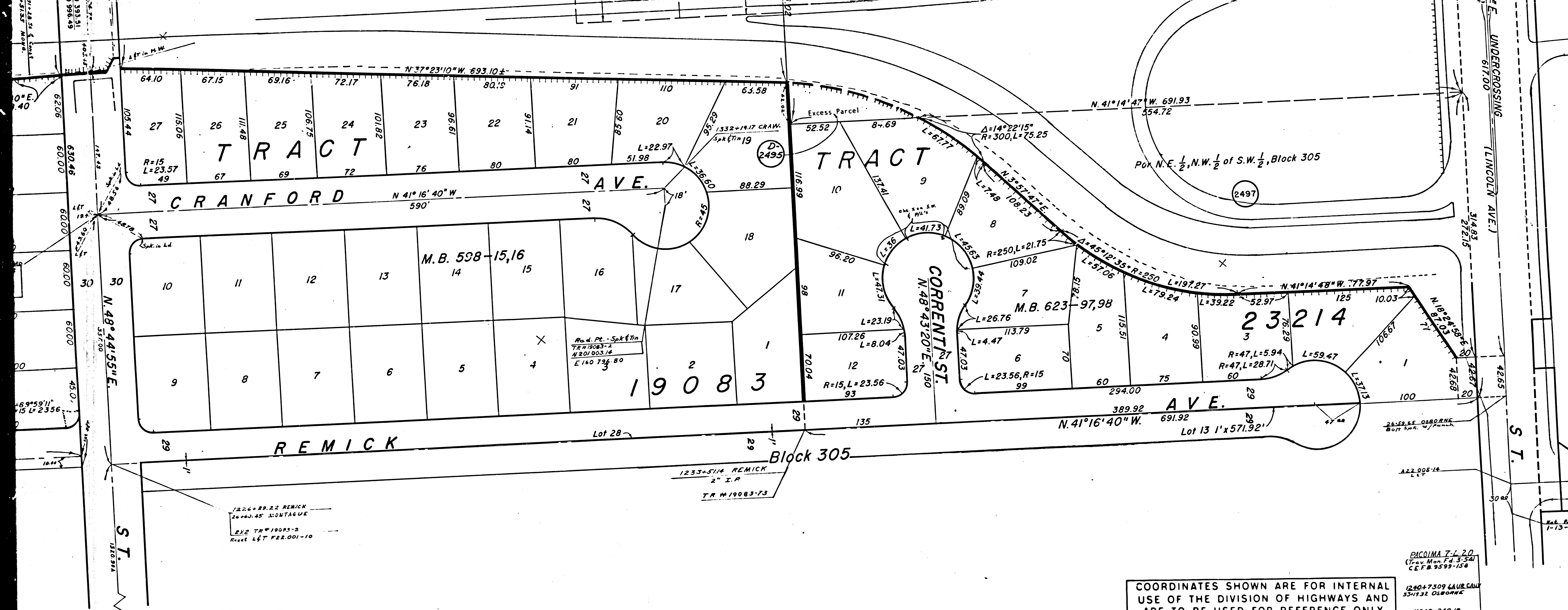
F.M. 20319 B 2 OF 3

- 2440 State of Ohio - Hansen & Co. ... 2-7-89
- 2443 Geo. P. Miller, et ux ... 12-2-59
- 2444 Western Growth Corp. et al ... 6-15-61
- 2478 Roger Jessup Farms ... 12-11-56

- 2481 Alphonse Faiella, et ux ... 2-2-52
- 2482 Mary V. Lyman ... 1-27-52
- 2483 Sycamore Builders ... 4-22-57
- 2484 A. E. Kroll ... 10-20-59

- 2485 Virgil F. Morse, et ux ... 2-2-52
- 2486 Paul W. Brown, et ux ... 4-24-57
- 2489 Edward H. Hill ... 7-25-58

FOR CONTINUATION SEE MAP F1298



COORDINATES SHOWN ARE FOR INTERNAL USE OF THE DIVISION OF HIGHWAYS AND ARE TO BE USED FOR REFERENCE ONLY

STATE OF CALIFORNIA
HIGHWAY TRANSPORTATION AGENCY
DEPARTMENT OF PUBLIC WORKS
DIVISION OF HIGHWAYS
ROAD: 7-LA-5
(Old 7-LA-4-LA)

RIGHT OF WAY MAP

WENTWORTH ST. (PM 36.62)
TO OSBORNE ST. (PM 37.41)



MONUMENTATION FROM CCM 22.73 REV. 3-63
AND "A" NOTES 22.005 "F" NOTES 22.001

C. OSBORNE N. 48° 45' 15" E. TAKEN AS BASIS OF BEARING FOR THIS MAP

REPRODUCIBLE COPY FILED WITH LA CO. SURVEYOR 3-65

- D. State to Gus Dades, et al
D.O. 02312-65
- North Hollywood Ranches Inc.
D. 2491 Fee 1-27-55
D. 48750-270
- Oscar Viotto
D. 2492 Fee 3-18-57
D. 4403-728
- Ralph A. Francisco et al
D. 2493 Fee 8-25-50
D. 135-783
- Evelyn M. Smith
D. 2495 Fee 4-11-59
D. 432-382
- (2497) James A. Bower et al
D.O. 8-15-58
D. 126-938
- (2500) Frank E. Sanfill et al
D.O. 12-11-59
D. 1084-517
- (2501) Rufiner A. McBurney et al
D.O. 4-17-57
D. 5236-432
- (2495) State to Sam Melilli
D.O. 2-8-69
D. 22791-733

F.M. 20319 B 3 OF 3

F-1297

RATIO 22/3

FILED MAP NO. S0318