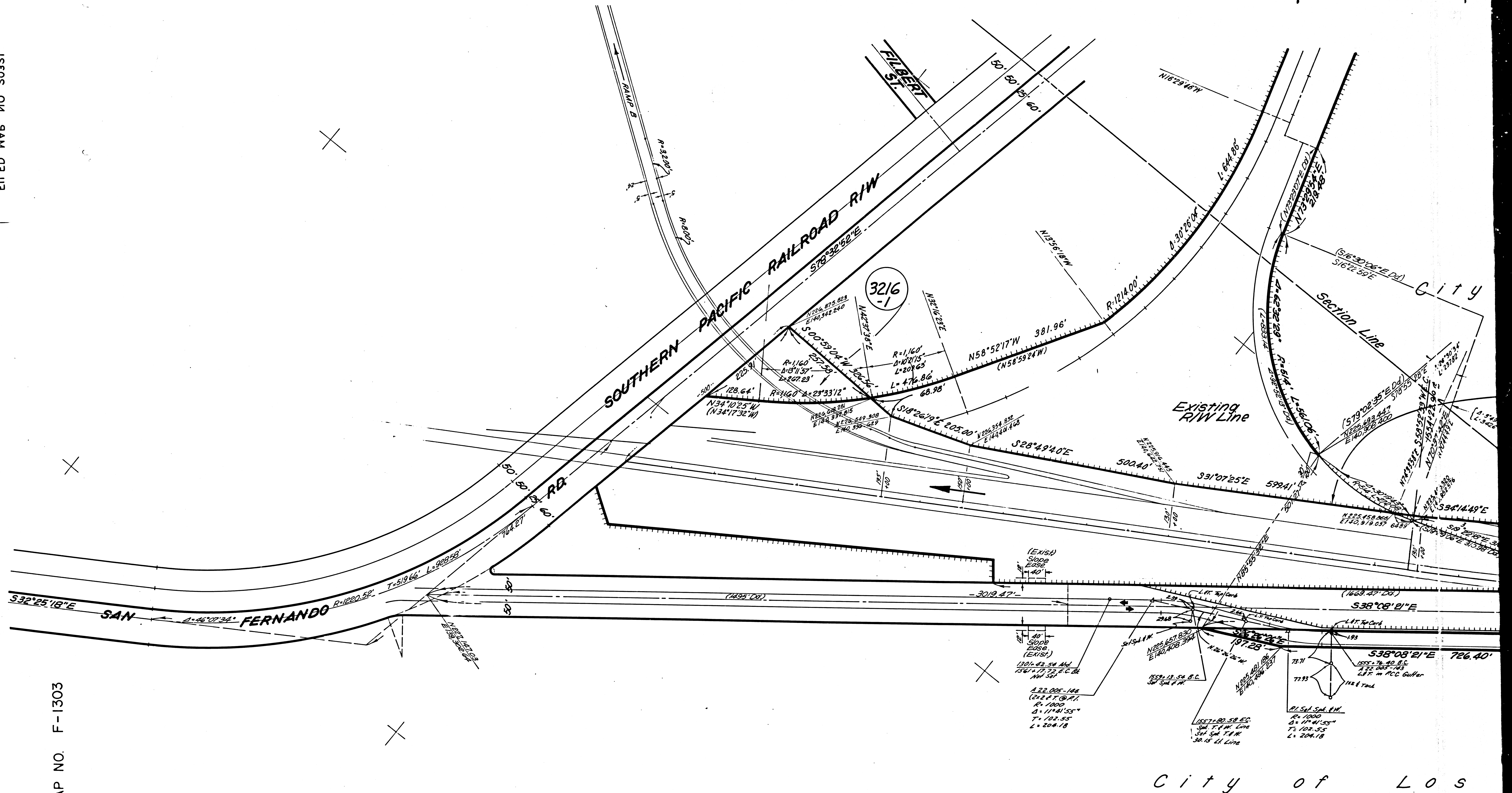


RIGHT MAP NO 50351



FOR CONTINUATION SEE MAP NO. F-1303

F.M.20321 A 1 OF 5

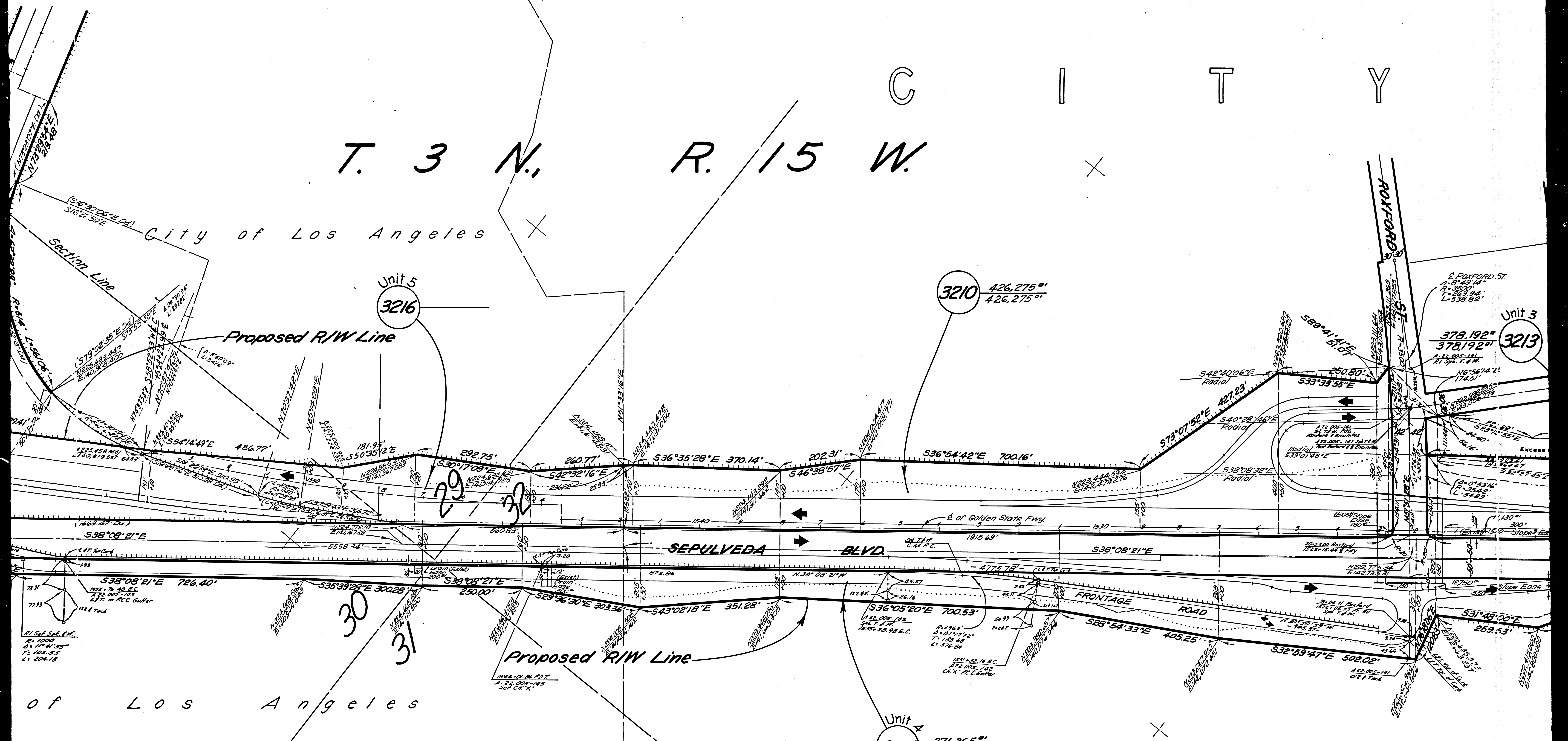
City of Los

R

T. 3 N., R. 15 W.

C I T Y

City of Los Angeles

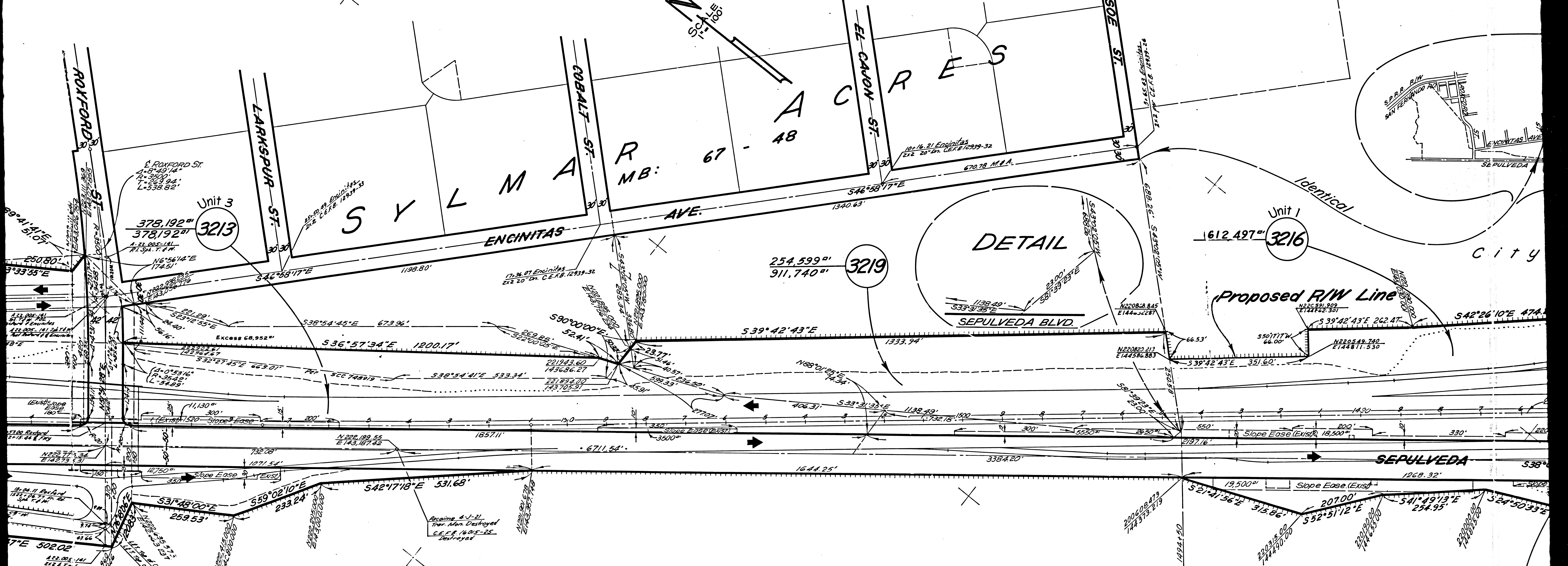


of Los Angeles

F.M.20321 | A 2 OF 5

R A N C H O E - M I S S P A T.

Y O F L O S



City of Los Angeles

F.M.20321 | A 3 OF 5

S S I O N D E S A N F E
P A T . I - 6 0 5 , 6 0 6

Unit 3
3216

Township

A N G E L S

F.M.20321 A 4 OF 5

Unit 2
3213
1,581,550 sq ft
230 Ac.

City of Los Angeles

R/W Line

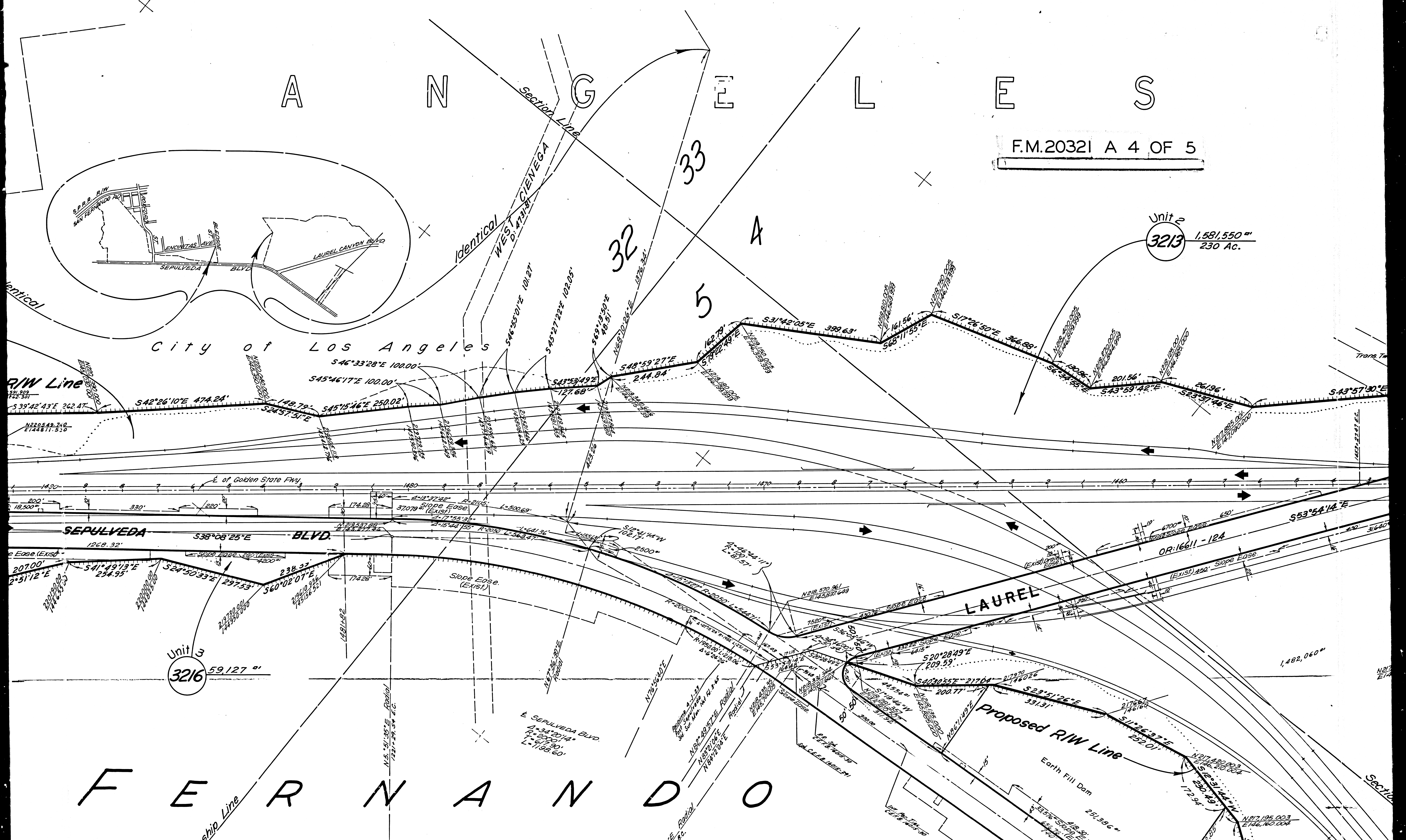
SEPUVEDA BLVD.

LAUREL

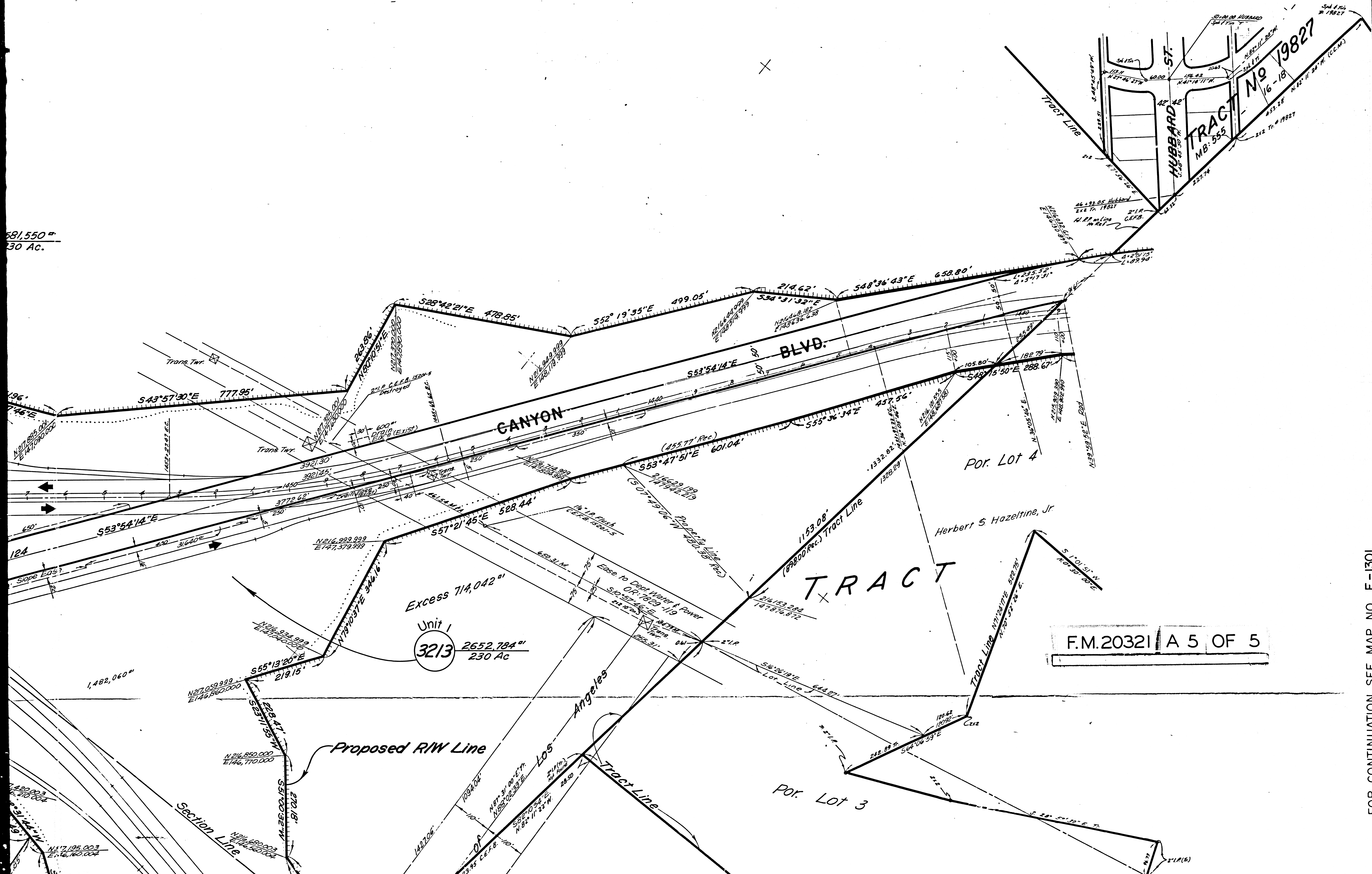
Proposed R/W Line

F E R N A N D O

Unit 3
3216
59,127 sq ft



581,550'±
230 Ac.

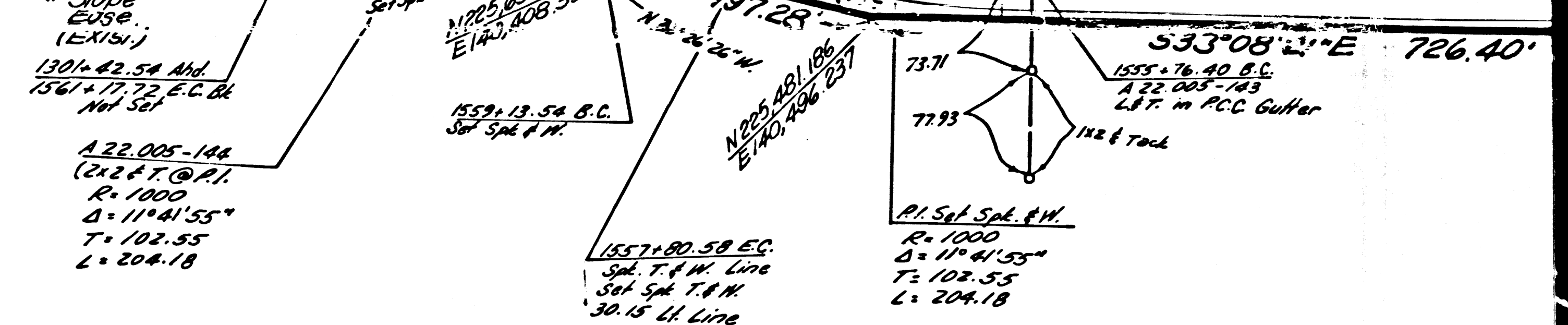


F.M.20321 A 5 OF 5

FOR CONTINUATION SEE MAP NO. F-1301

ISSUED ON 9 AM 1982

FOR CONTINUATION SEE MAP NO. F-1303

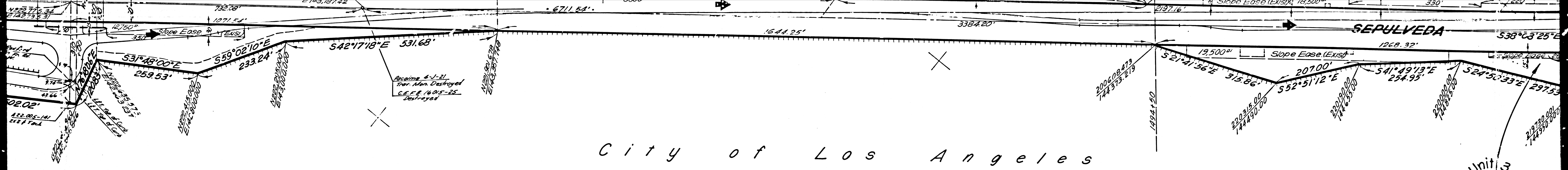


City of Los

R

F.M.20321 | B 1 | OF 5

FILED MAP NO. 50351



City of Los Angeles

Unit 3
3216 59.127

S S I O N D E S A N F E

A T. I - 605, 606

T. 3 N., R. 15 W.

Township Line

F.M. 20321 B 3 OF 5

○	_____	○	_____
○	_____	○	_____
○	_____	○	_____

○	State of _____	○	Frank A. _____	○	_____
○	_____	○	_____	○	_____
○	_____	○	_____	○	_____



FOR CONTINUATION SEE MAP NO. F-1301

COORDINATES SHOWN ARE FOR INTERNAL USE OF THE DIVISION OF HIGHWAYS AND ARE TO BE USED FOR REFERENCE ONLY

STATE OF CALIFORNIA
 HIGHWAY TRANSPORTATION AGENCY
 DEPARTMENT OF PUBLIC WORKS
 DIVISION OF HIGHWAYS
 ROAD: 7-LA-5
 (Old 7-LA-4-LA)

RIGHT OF WAY MAP

HUBBARD ST. (PM 40.82)
 SAN FERNANDO RD. (PM 43.62)



MONUMENTATION FROM C.C.M. 22.75 Rev. 5-60
 & "A" NOTES 22.005 & C.E.F.B. 12507

BASIS OF BEARING TAKEN FOR THIS MAP
 C SEPULVEDA BLVD. S. 38° 08' 25" E.

REPRODUCIBLE COPY FILED WITH L.A. CO. SURVEYOR 3-65

F.M.20321 B 5 OF 5

F-1302

FILED MAP NO. 50351

RATIO 2 2/5