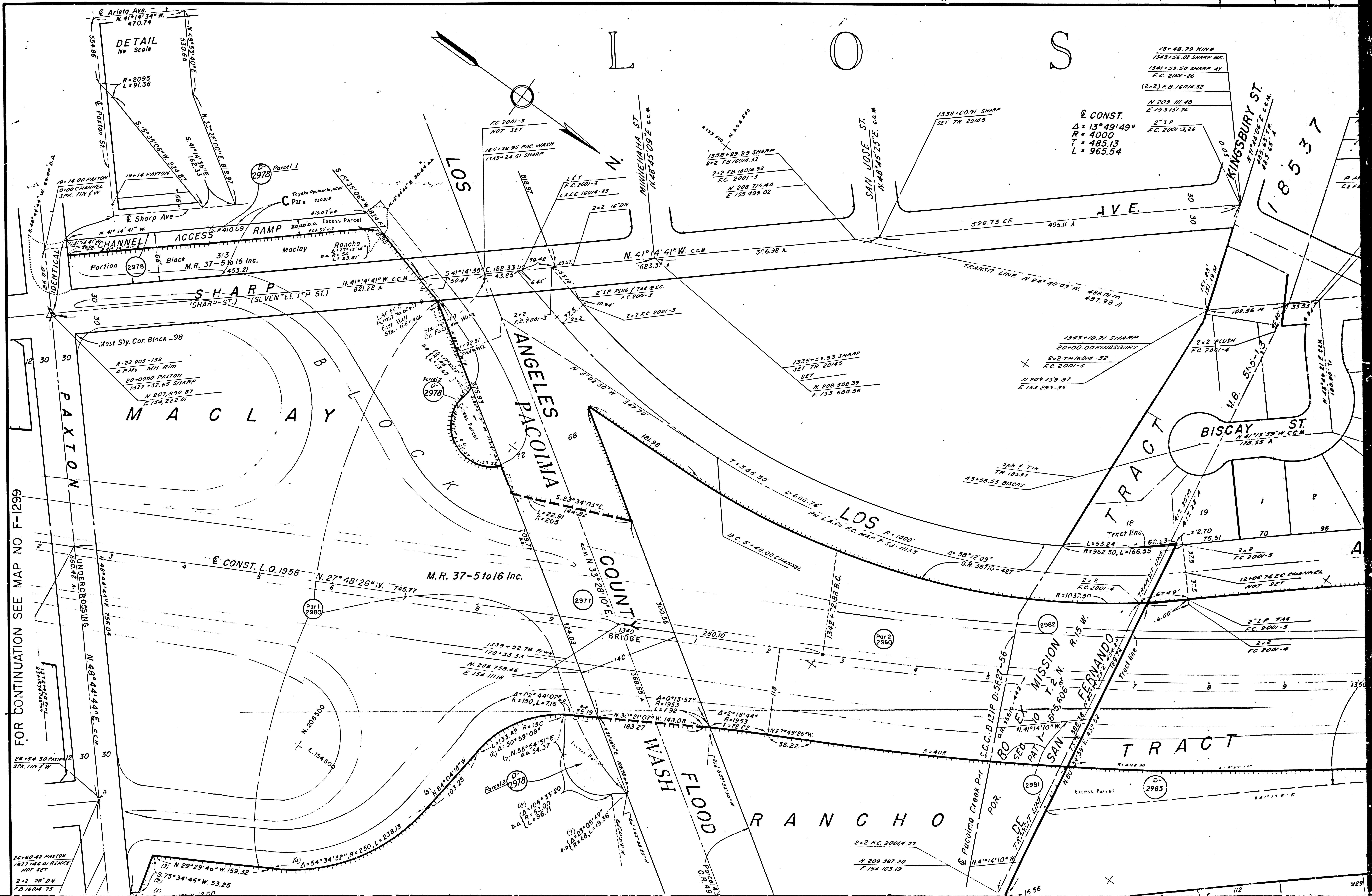
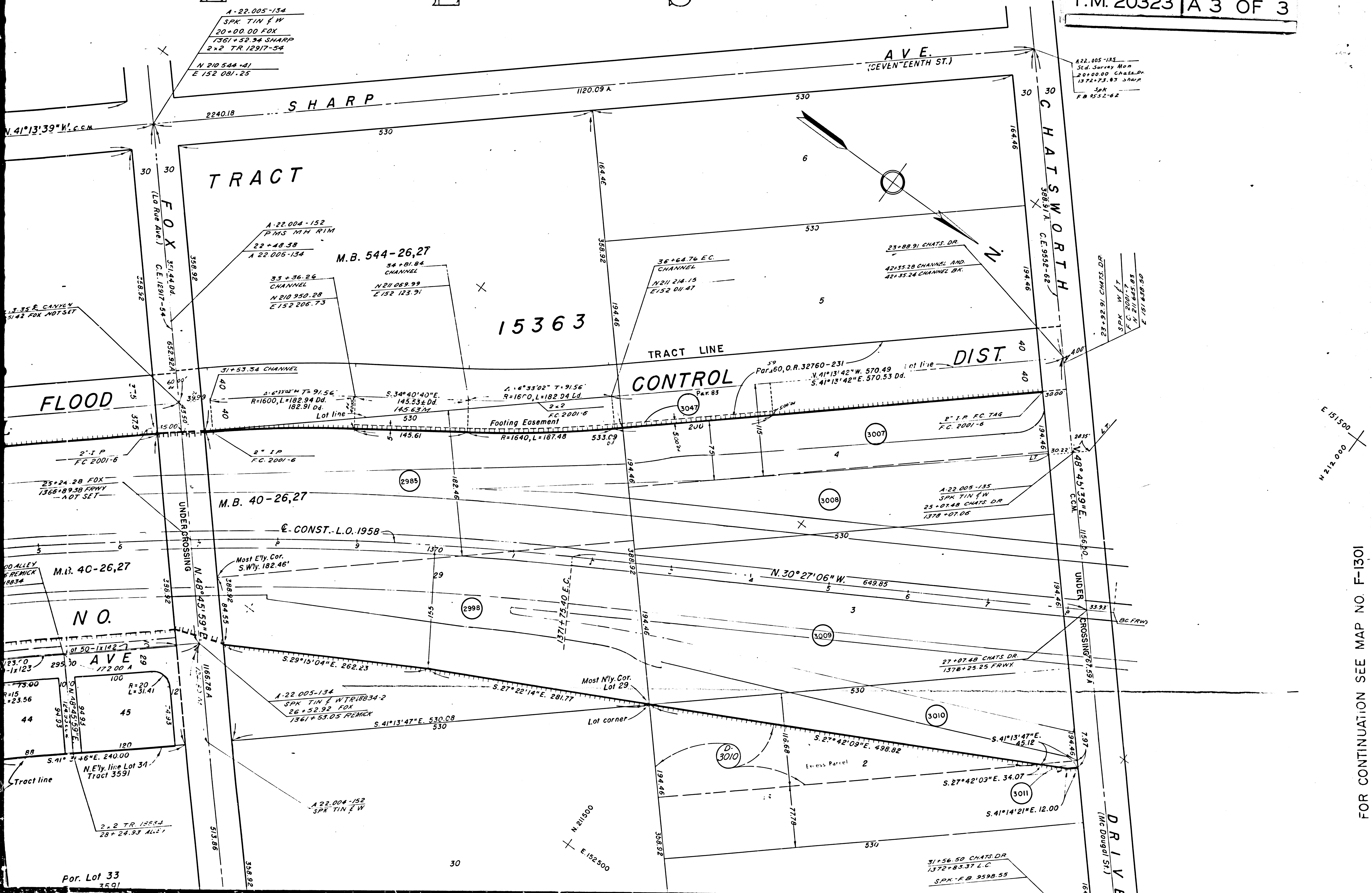


FILED MAY 10 5035S



L E S

F.M. 20323 | A 3 OF 3

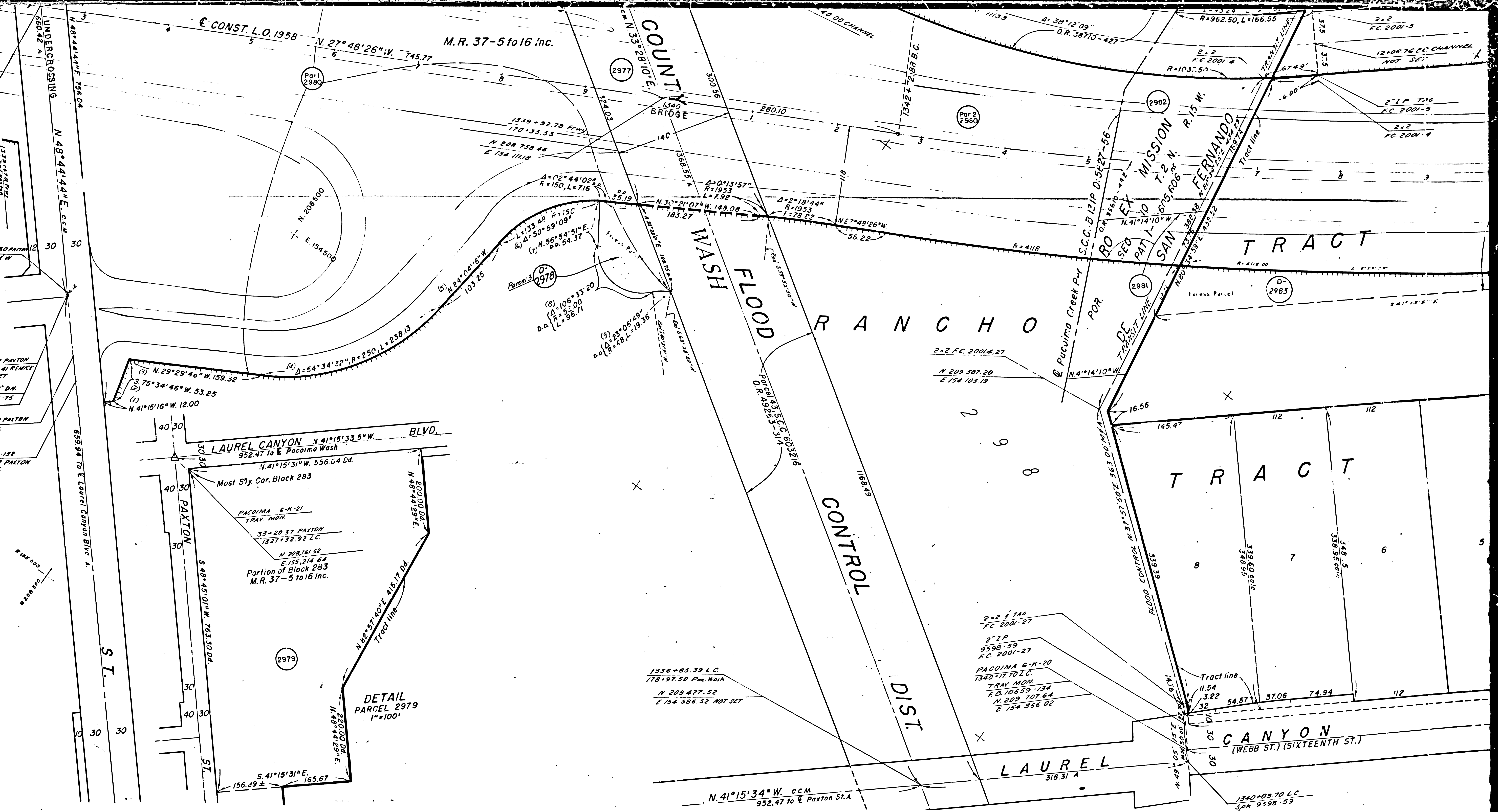


FILED MAY 10 2035

FOR CONTINUATION SEE MAP NO. F-1301

FOR CONTINUATION SEE MAP N

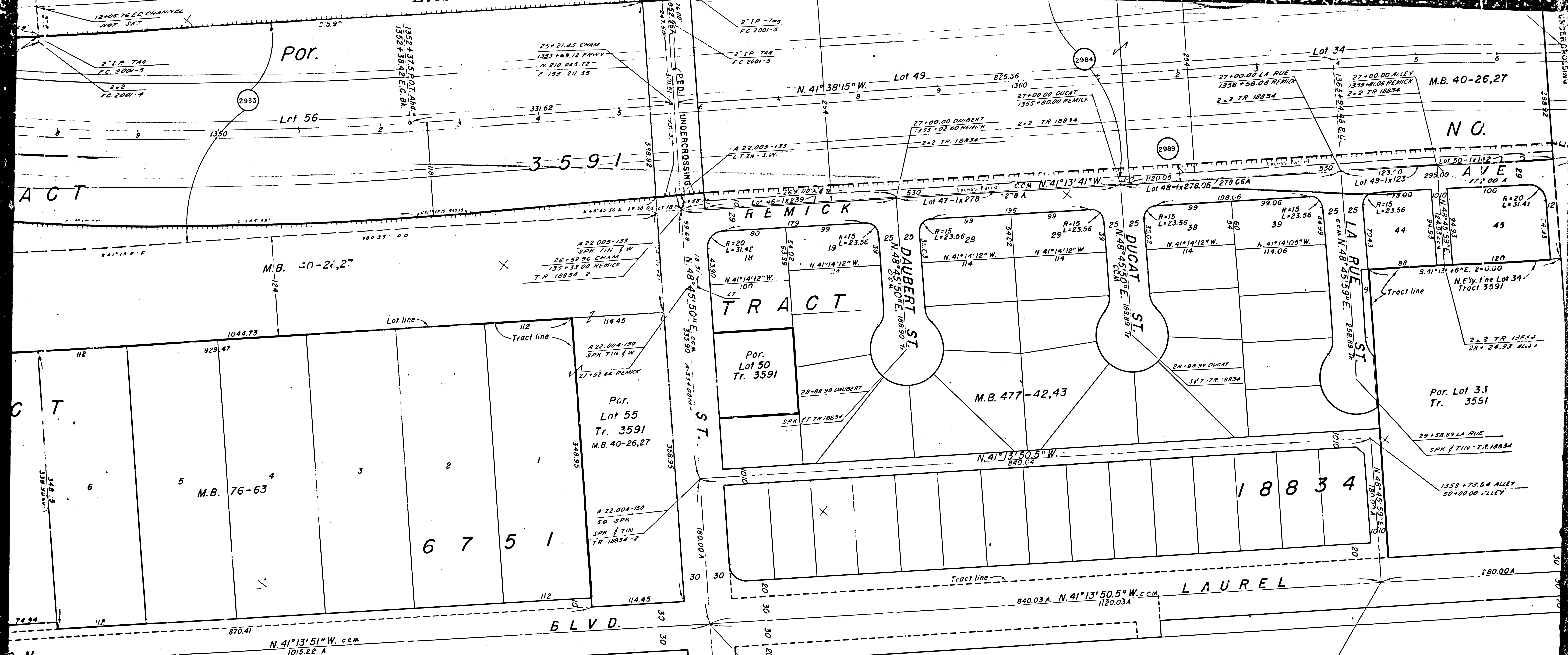
FILED MAP NO 50353



2977	State of L.A. Co. F.C. District	2978	Toyoko Ogimachi et al
2978	D.D. 2-24-65	2979	W. J. ...
2979	D 2843-727	2980	City of L.A.
2980		2981	...
2981		2982	...
2982		2983	...
2983		2985	...

F.M. 20323 | B | OF 3

ANGLE EAST



2986	H.E. Evershart, et al	Fee	5-10-41
2987	Eloy P. Tapia, et al	Fee	6-2-60
2988	A.A. Overman, et al	Fee	8-17-61
2989	Estate of Fred P. Jones, deceased	Fee	8-10-62
2990	E.L.C. Manner, Eng	Fee	8-10-62

F.M. 20323 B 2 OF 3

