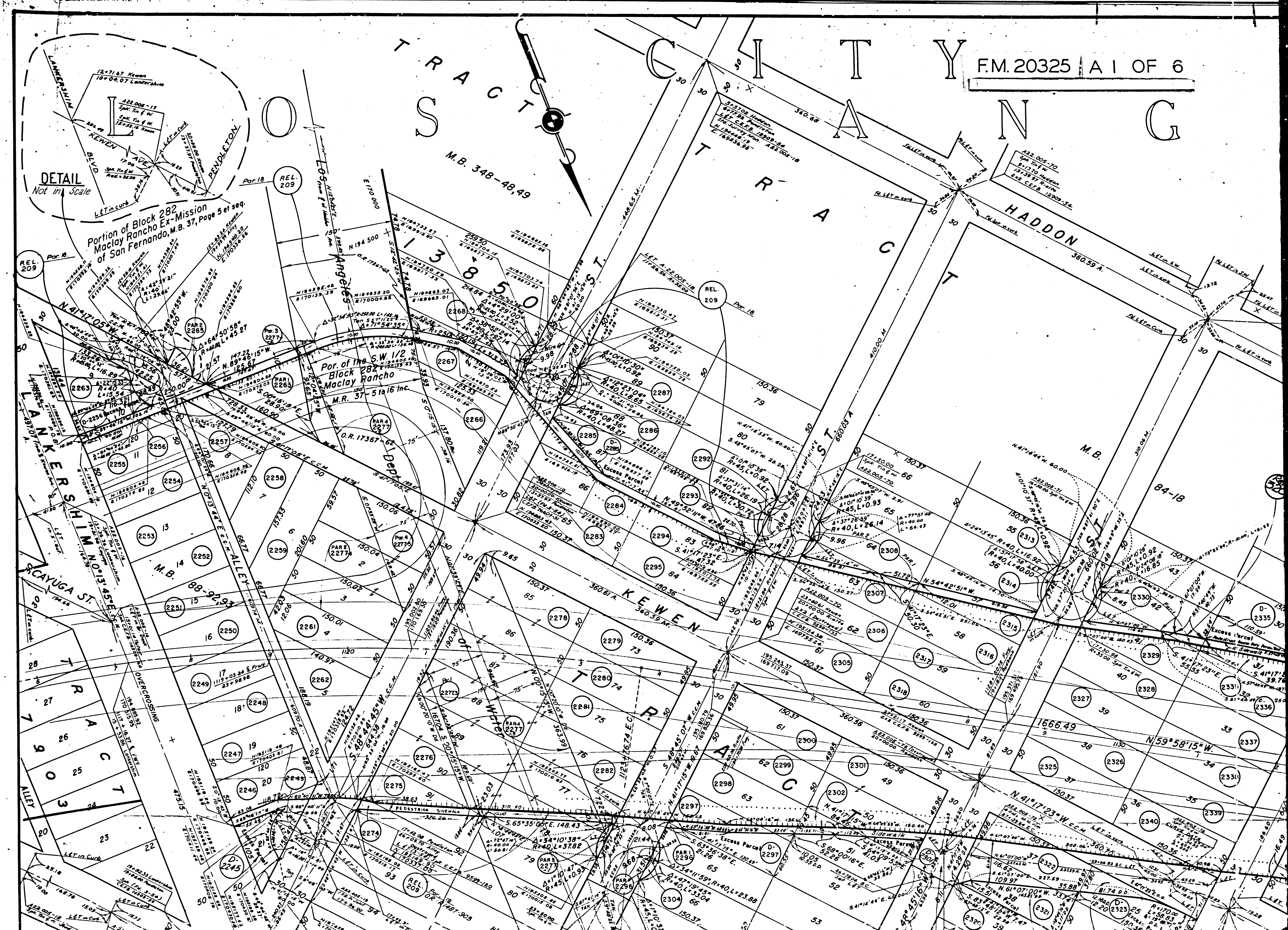


# TRACT CITY

F.M. 20325 A 1 OF 6



**DETAIL**  
Not in Scale

Portion of Block 282  
Macloy Rancho Ex-Mission  
of San Fernando, M.B. 37, Page 5 et seq.

Por. of the S.W. 1/2  
Block 282  
Macloy Rancho  
M.R. 37-5 to 16 Inc.

LANKERSHIM  
NOBLE'S  
SCAYUGA ST.

KEWEN

HADDON

TRACT

TRACT

TRACT

TRACT

TRACT

TRACT

TRACT

TRACT

TRACT

TRACT

TRACT

TRACT

TRACT

TRACT

TRACT

REL. 209

REL. 209

REL. 209

REL. 209

REL. 209

REL. 209

REL. 209

REL. 209

REL. 209

REL. 209

REL. 209

REL. 209

REL. 209

REL. 209

REL. 209

REL. 209

REL. 209

REL. 209

REL. 209

REL. 209

REL. 209

REL. 209

REL. 209

REL. 209

REL. 209

REL. 209

REL. 209

REL. 209

REL. 209

REL. 209

REL. 209

REL. 209

REL. 209

REL. 209

REL. 209

REL. 209

REL. 209

REL. 209

REL. 209

REL. 209

REL. 209

REL. 209

REL. 209

REL. 209

REL. 209

REL. 209

REL. 209

REL. 209

REL. 209

REL. 209

REL. 209

REL. 209

REL. 209

REL. 209

REL. 209

REL. 209

REL. 209

REL. 209

REL. 209

REL. 209

REL. 209

REL. 209

REL. 209

REL. 209

REL. 209

REL. 209

REL. 209

REL. 209

REL. 209

REL. 209

REL. 209

REL. 209

REL. 209

REL. 209

REL. 209

REL. 209

REL. 209

REL. 209

REL. 209

REL. 209

REL. 209

REL. 209

REL. 209

REL. 209

REL. 209

REL. 209

REL. 209

REL. 209

REL. 209

REL. 209

REL. 209

REL. 209

REL. 209

REL. 209

REL. 209

REL. 209

REL. 209

REL. 209

REL. 209

REL. 209

REL. 209

REL. 209

REL. 209

REL. 209

REL. 209

REL. 209

REL. 209

REL. 209

REL. 209

REL. 209

REL. 209

REL. 209

REL. 209

REL. 209

REL. 209

REL. 209

REL. 209

REL. 209

REL. 209

REL. 209

REL. 209

REL. 209

REL. 209

REL. 209

REL. 209

REL. 209

REL. 209

REL. 209

REL. 209

REL. 209

REL. 209

REL. 209

REL. 209

REL. 209

REL. 209

REL. 209

REL. 209

REL. 209

REL. 209

REL. 209

REL. 209

REL. 209

REL. 209

REL. 209

REL. 209

REL. 209

REL. 209

REL. 209

REL. 209

REL. 209

REL. 209

REL. 209

REL. 209

REL. 209

REL. 209

REL. 209

REL. 209

REL. 209

REL. 209

REL. 209

REL. 209

REL. 209

REL. 209

REL. 209

REL. 209

REL. 209

REL. 209

REL. 209

REL. 209

REL. 209

REL. 209

REL. 209

REL. 209

REL. 209

REL. 209

REL. 209

REL. 209

REL. 209

REL. 209

REL. 209

REL. 209

REL. 209

REL. 209

REL. 209

REL. 209

REL. 209

REL. 209

REL. 209

REL. 209

REL. 209

REL. 209

REL. 209

REL. 209

REL. 209

REL. 209

REL. 209

REL. 209

REL. 209

REL. 209

REL. 209

REL. 209

REL. 209

REL. 209

REL. 209

REL. 209

REL. 209

REL. 209

REL. 209

REL. 209

REL. 209

REL. 209

REL. 209

REL. 209

REL. 209

REL. 209

REL. 209

REL. 209

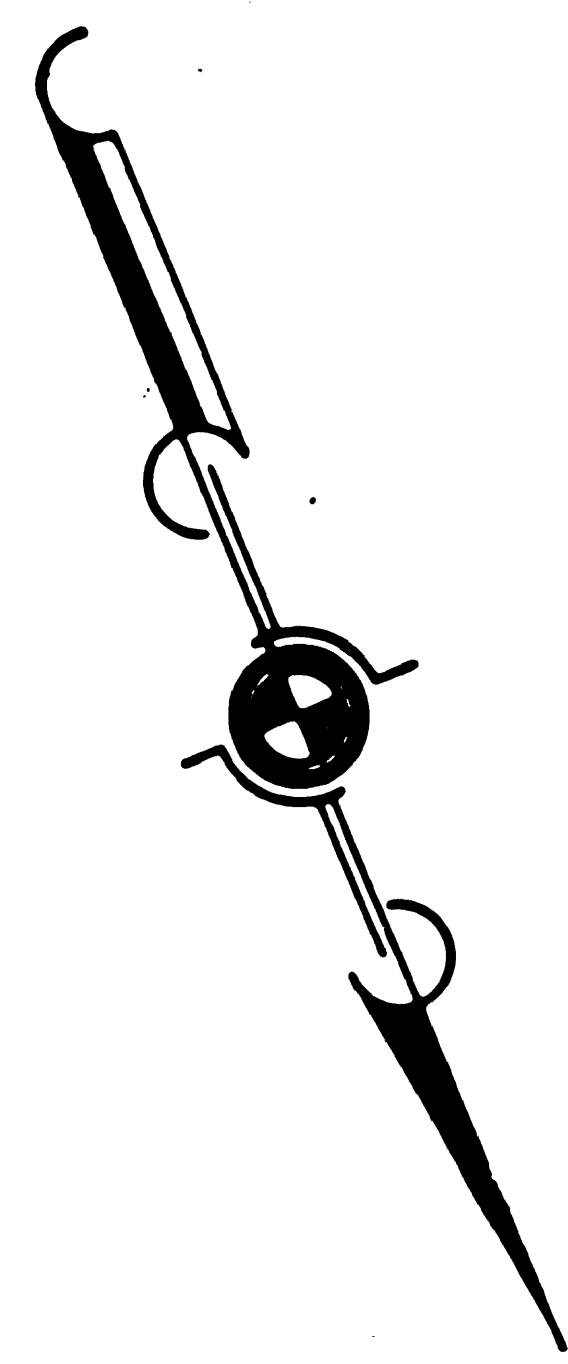
REL. 209

REL. 209

REL. 209

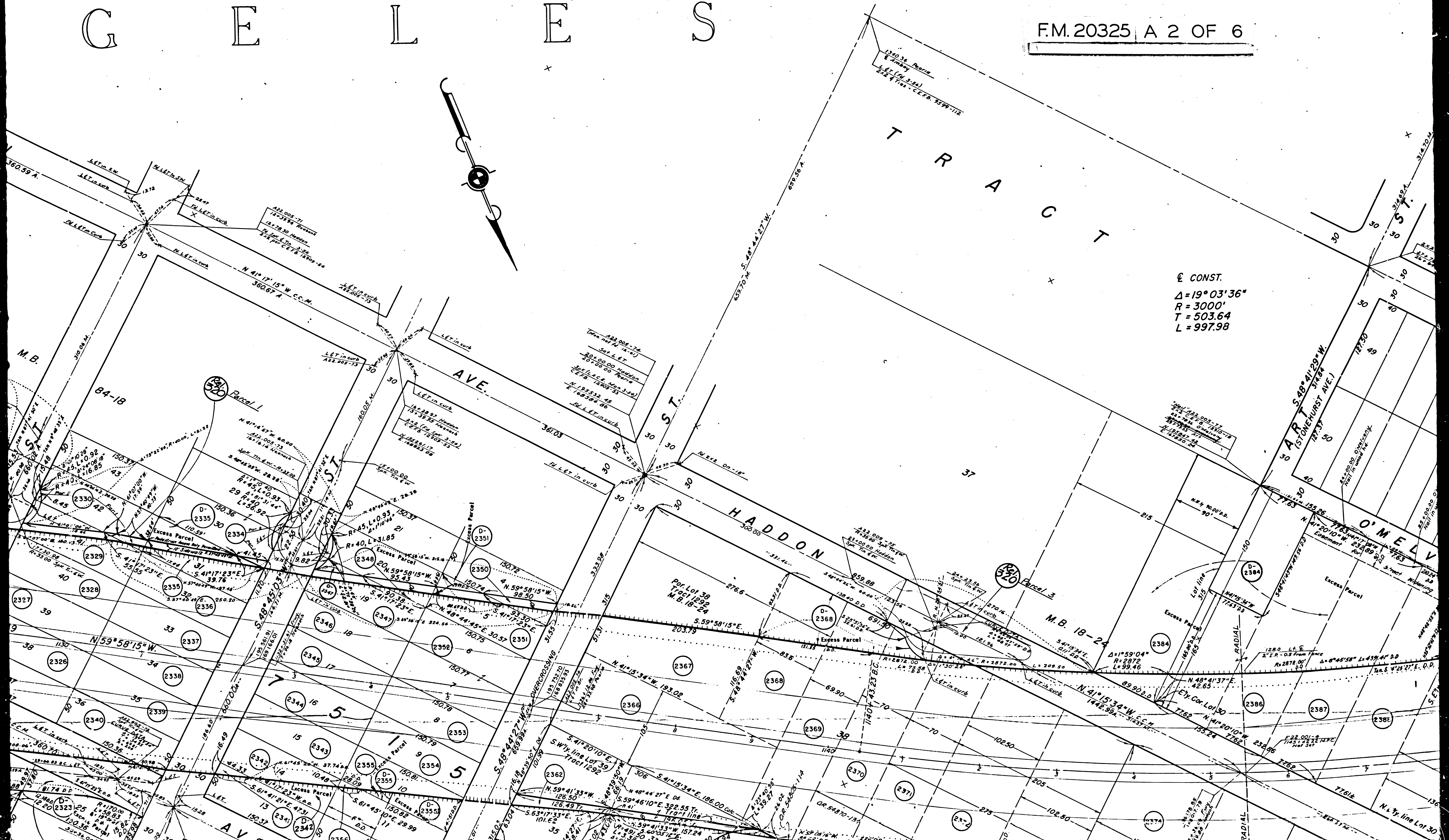
# G E O F I L E S

F.M. 20325 A 2 OF 6

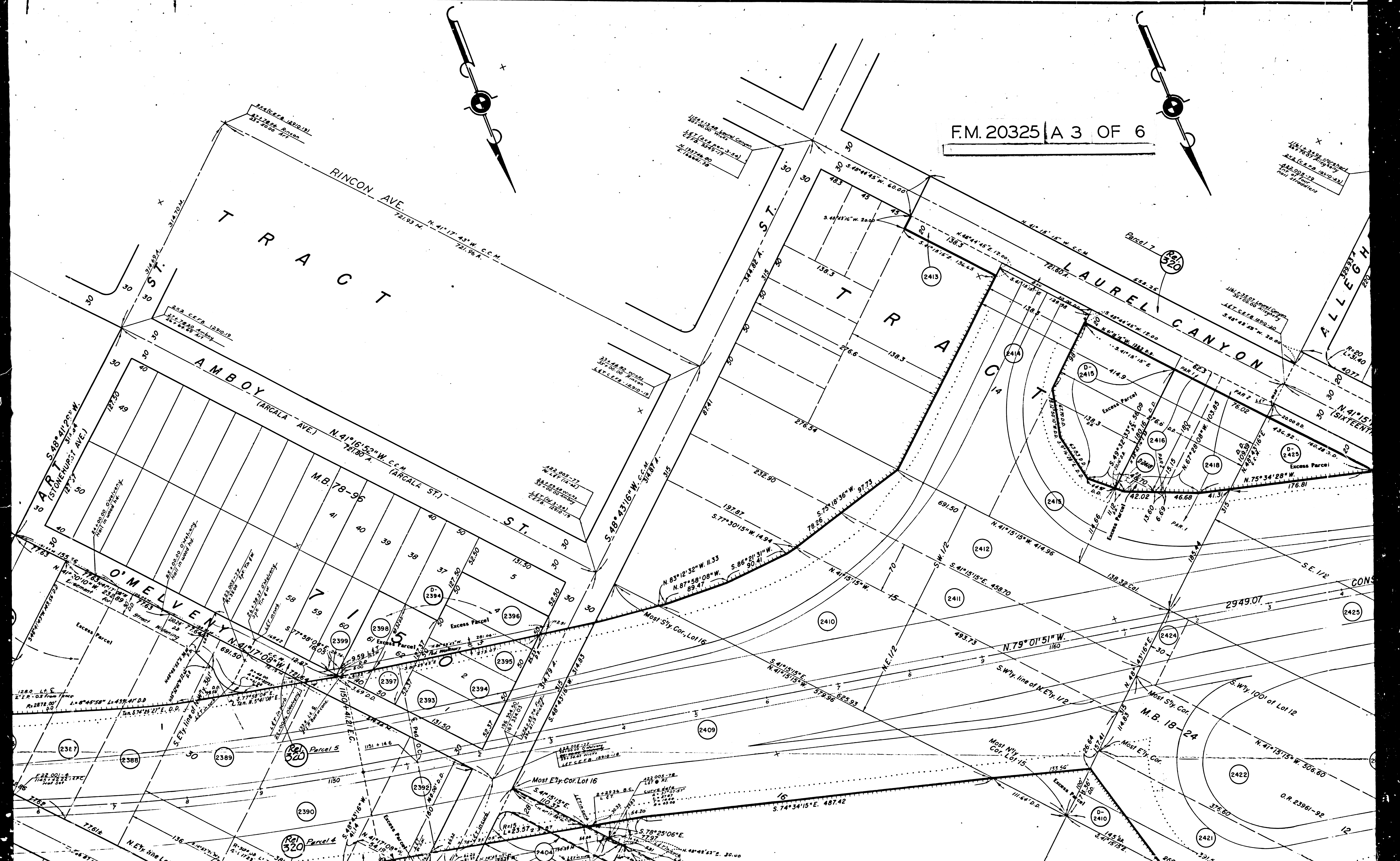
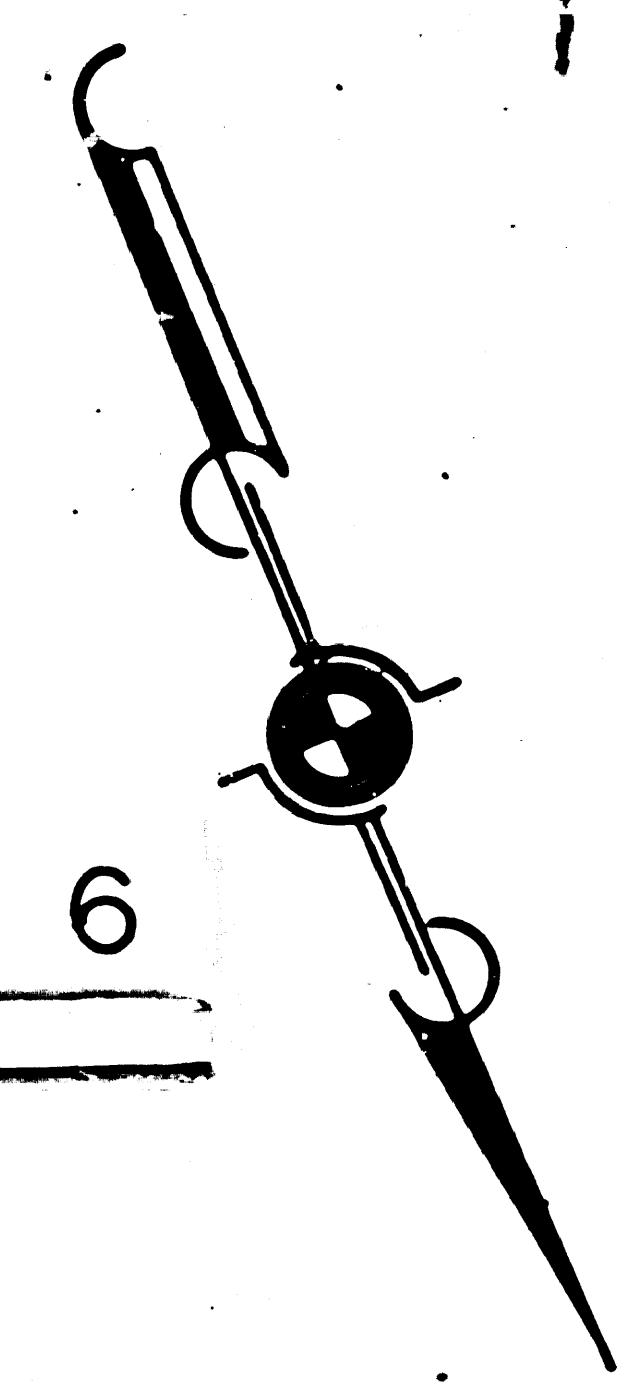
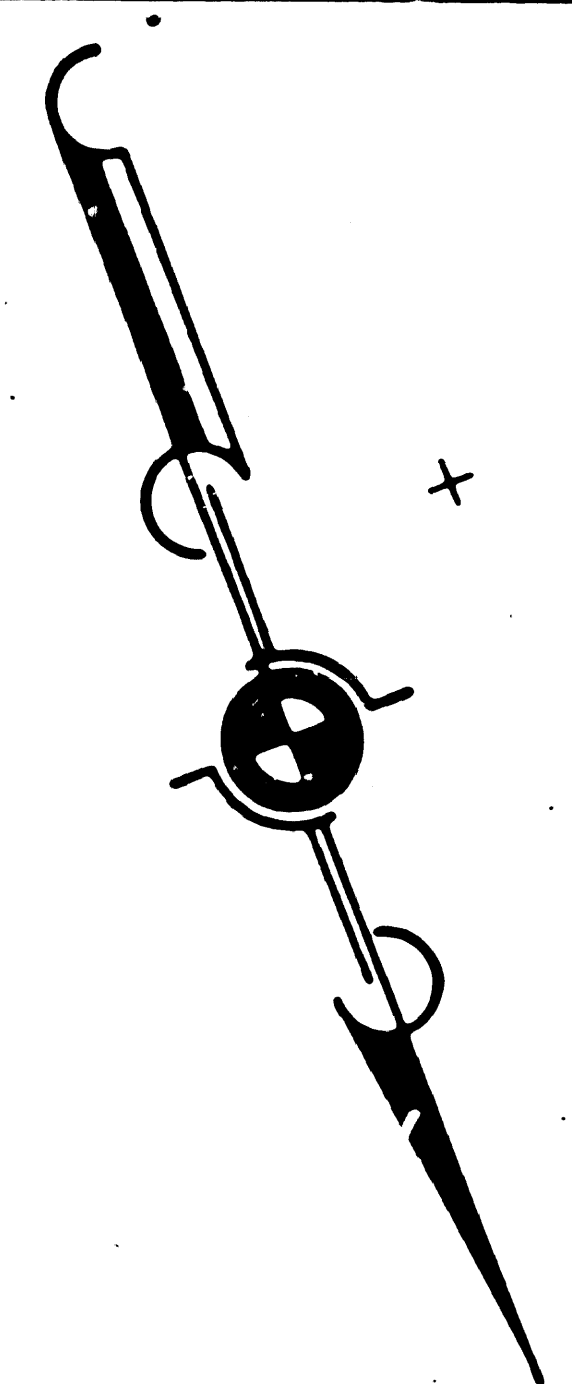


## T R A C T

CONST.  
 $\Delta = 19^{\circ} 03' 36''$   
 $R = 3000'$   
 $T = 503.64$   
 $L = 997.98$



F.M. 20325 | A 3 OF 6



RINCON AVE. N. 41° 17' 43" W. C.C.M. 721.93 N. 721.96 N.

AMBOY (ARCALA AVE.) N. 41° 16' 52" W. C.C.M. 721.80 N.

O'MALLEY N. 41° 17' 08" W. 721.80 N.

LAUREL CANYON N. 41° 15' 15" W. C.C.M. 721.60 N.

ST. S. 48° 43' 16" W. C.C.M. 318.71 N.

LAUREL CANYON N. 41° 15' 15" W. C.C.M. 721.60 N.

ST. S. 41° 15' 15" W. 414.95 N.

ST. S. 79° 01' 51" W. 1160 N.

N. Ely. line Lot 30

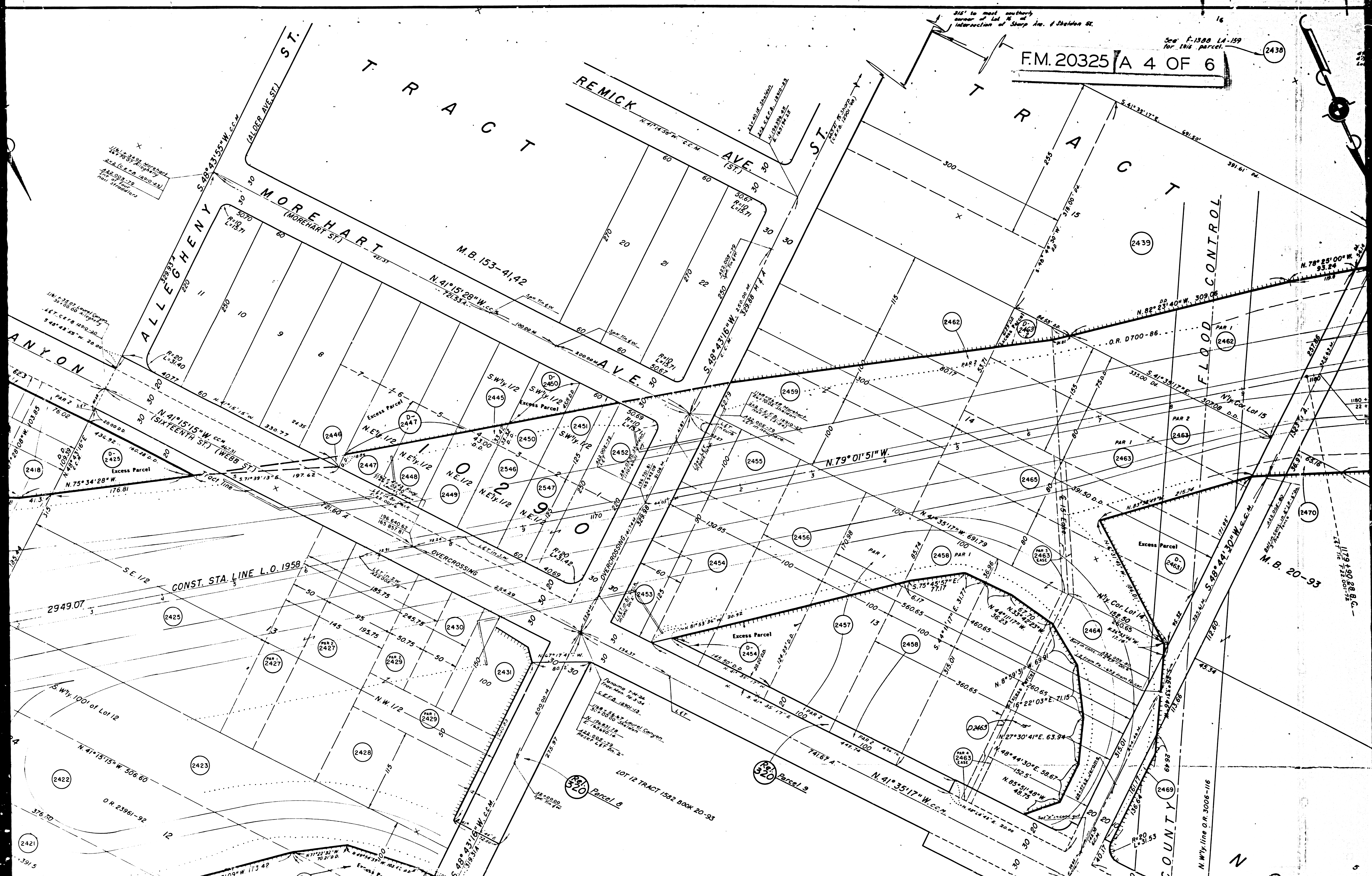
Most Ely. Cor. Lot 16

Most S'ly. Cor. Lot 15

F.M. 20325 A 4 OF 6

See F-1388 LA-159 for this parcel.

316' to most southerly corner of Lot 16 at intersection of Sharp Ave. & Sheldon St.



1/16-3/29 Morshad  
 1/16-7/20 Morshad  
 1/16-1/20 Morshad  
 1/16-1/20 Morshad  
 1/16-1/20 Morshad  
 1/16-1/20 Morshad

1/16-3/29 Lowell Canyon  
 1/16-7/20 Lowell Canyon  
 1/16-1/20 Lowell Canyon  
 1/16-1/20 Lowell Canyon  
 1/16-1/20 Lowell Canyon

1/16-3/29 Lowell Canyon  
 1/16-7/20 Lowell Canyon  
 1/16-1/20 Lowell Canyon  
 1/16-1/20 Lowell Canyon  
 1/16-1/20 Lowell Canyon

N. W. 1/4 line O.R. 3006-116

LOT 12 TRACT 1592 BOOK 20-53

M.B. 20-93

M.B. 153-41,42

FLOOD CONTROL

ANYON

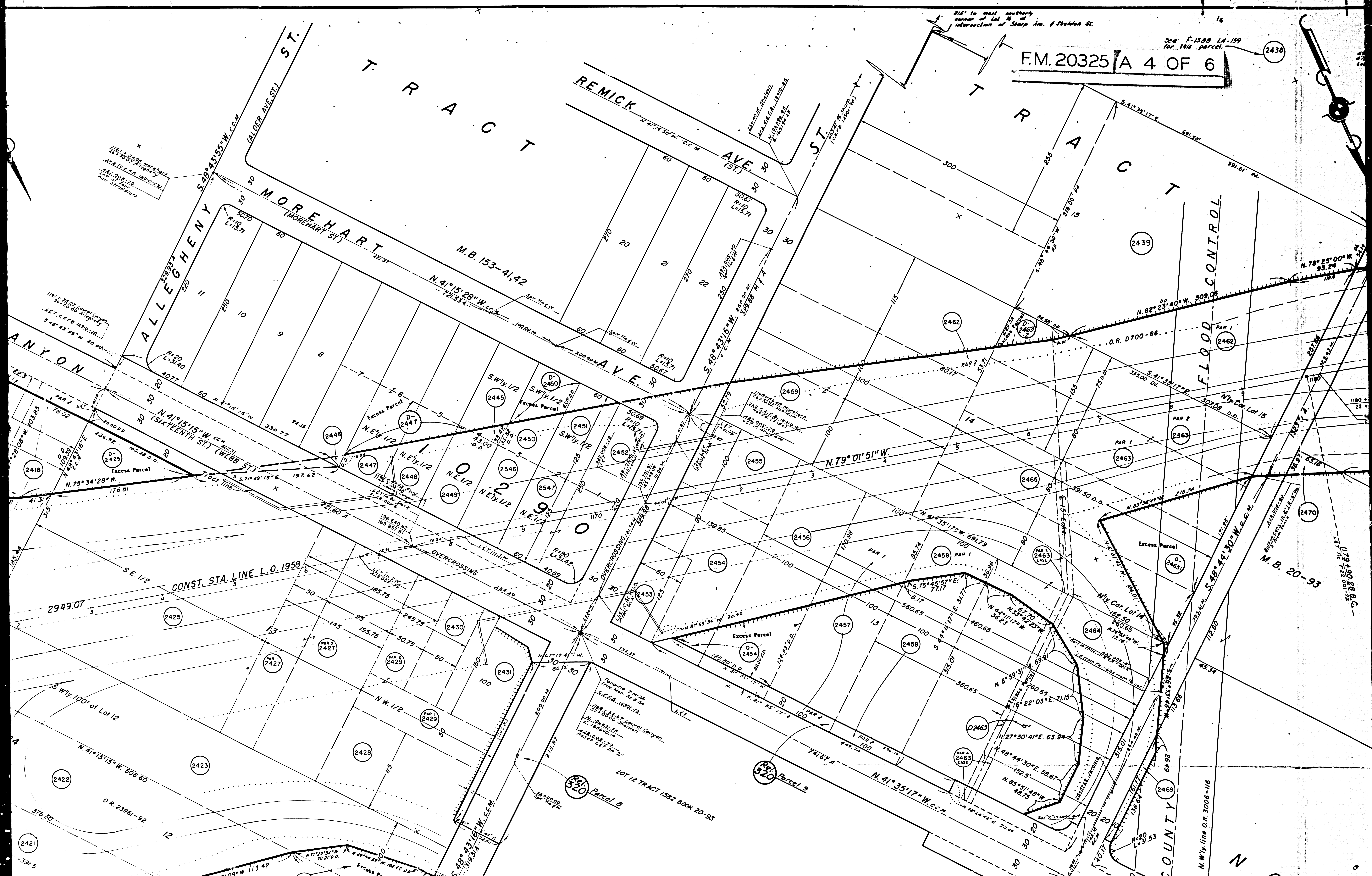
MOREHART  
 (MOREHART ST.)

TRACT REMICK

F.M. 20325 A 4 OF 6

See F-1388 LA-159 for this parcel.

316' to most southerly corner of Lot 16 at intersection of Sharp Ave. & Sheldon St.



1/16-3/29 Morshad  
 1/16-7/20 Morshad  
 1/16-1/20 Morshad  
 1/16-1/20 Morshad  
 1/16-1/20 Morshad

1/16-3/29 Lowell Canyon  
 1/16-7/20 Lowell Canyon  
 1/16-1/20 Lowell Canyon  
 1/16-1/20 Lowell Canyon  
 1/16-1/20 Lowell Canyon

1/16-3/29 Lowell Canyon  
 1/16-7/20 Lowell Canyon  
 1/16-1/20 Lowell Canyon  
 1/16-1/20 Lowell Canyon  
 1/16-1/20 Lowell Canyon

N. W. 1/4 line O.R. 3006-116

LOT 12 TRACT 1592 BOOK 20-53

M.B. 20-93

M.B. 153-41,42

FLOOD CONTROL

ANYON

MOREHART  
 (MOREHART ST.)

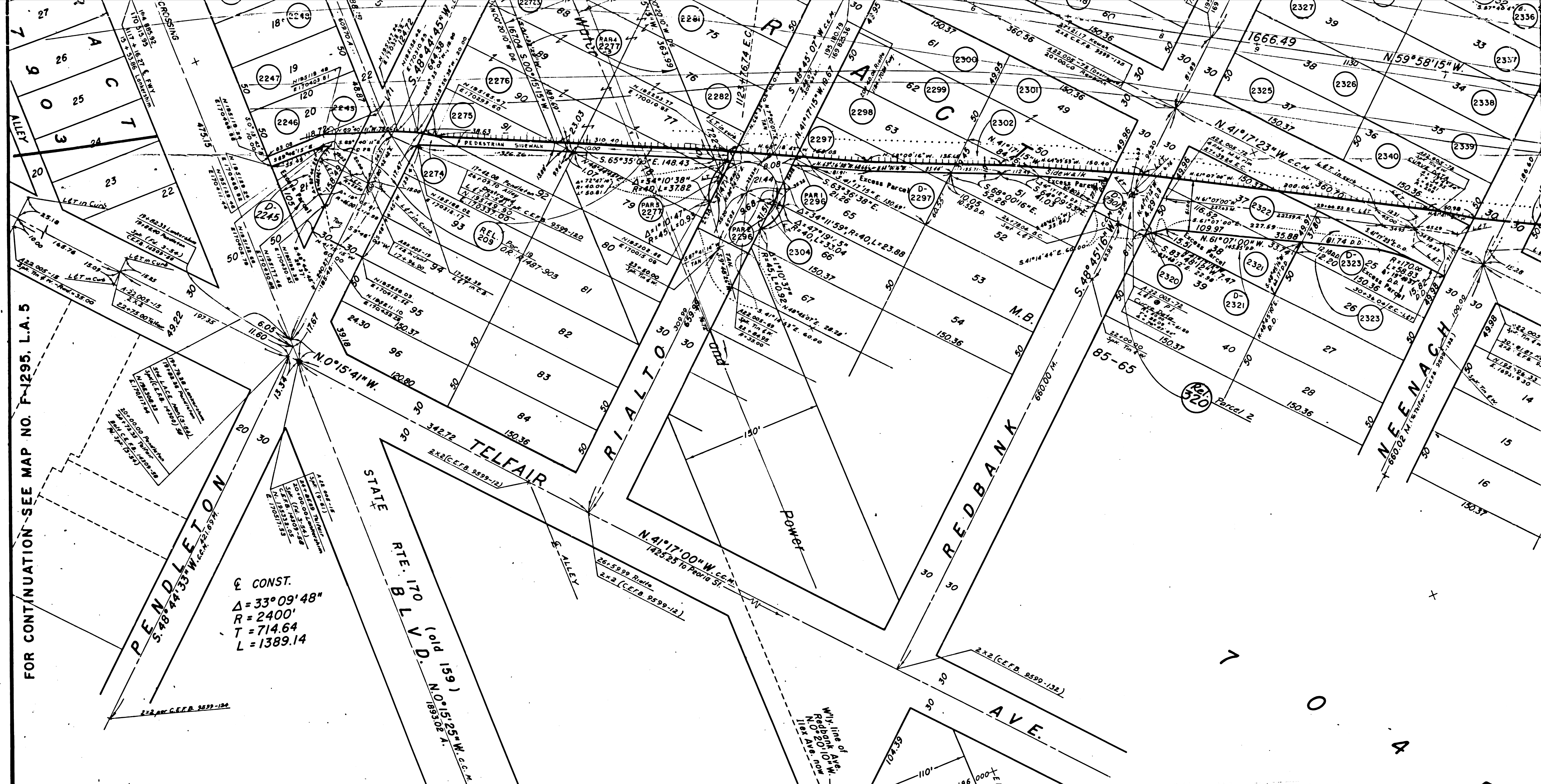
TRACT REMICK

F.M. 20325 A 4 OF 6

See F-1388 LA-159 for this parcel.

316' to most southerly corner of Lot 16 at intersection of Sharp Ave. & Sheldon St.



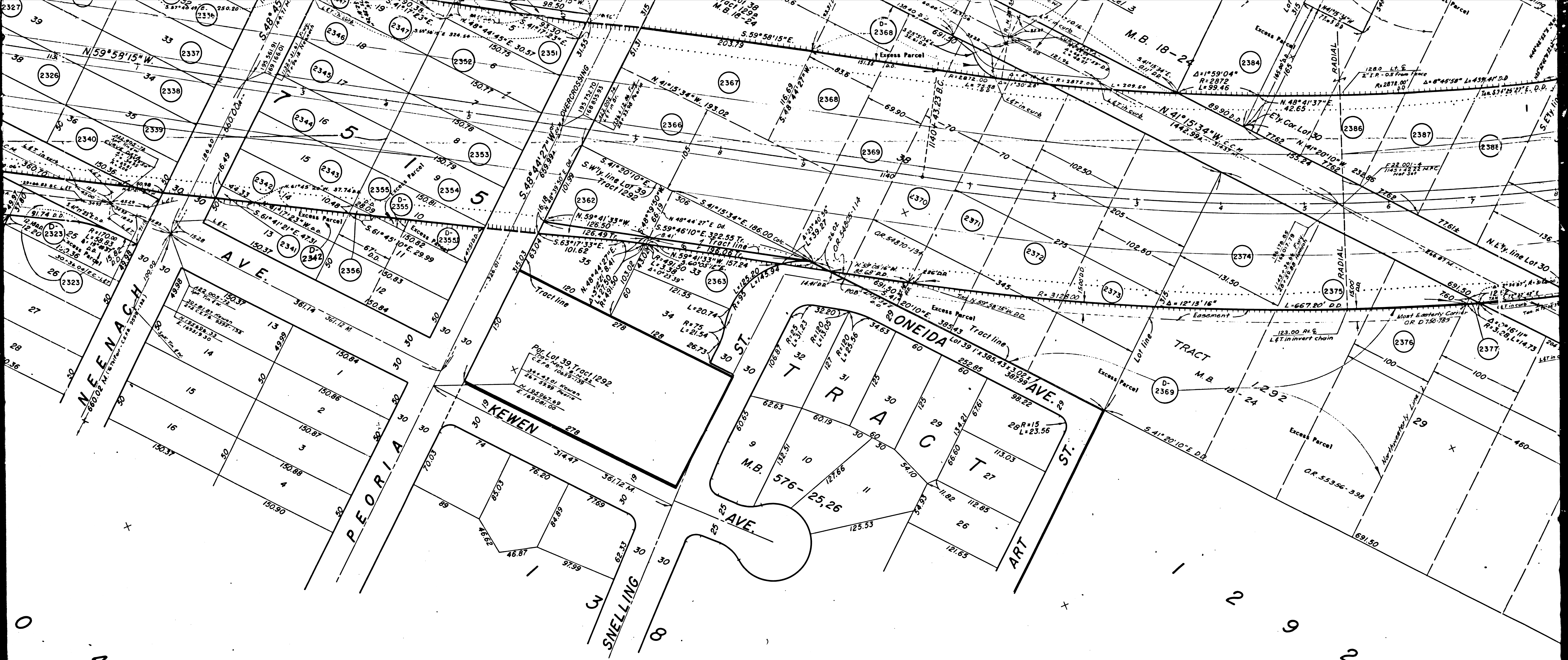


FOR CONTINUATION SEE MAP NO. F-1295, L.A. 5

CONST.  
 $\Delta = 33^{\circ} 09' 48''$   
 $R = 2400'$   
 $T = 714.64$   
 $L = 1389.14$

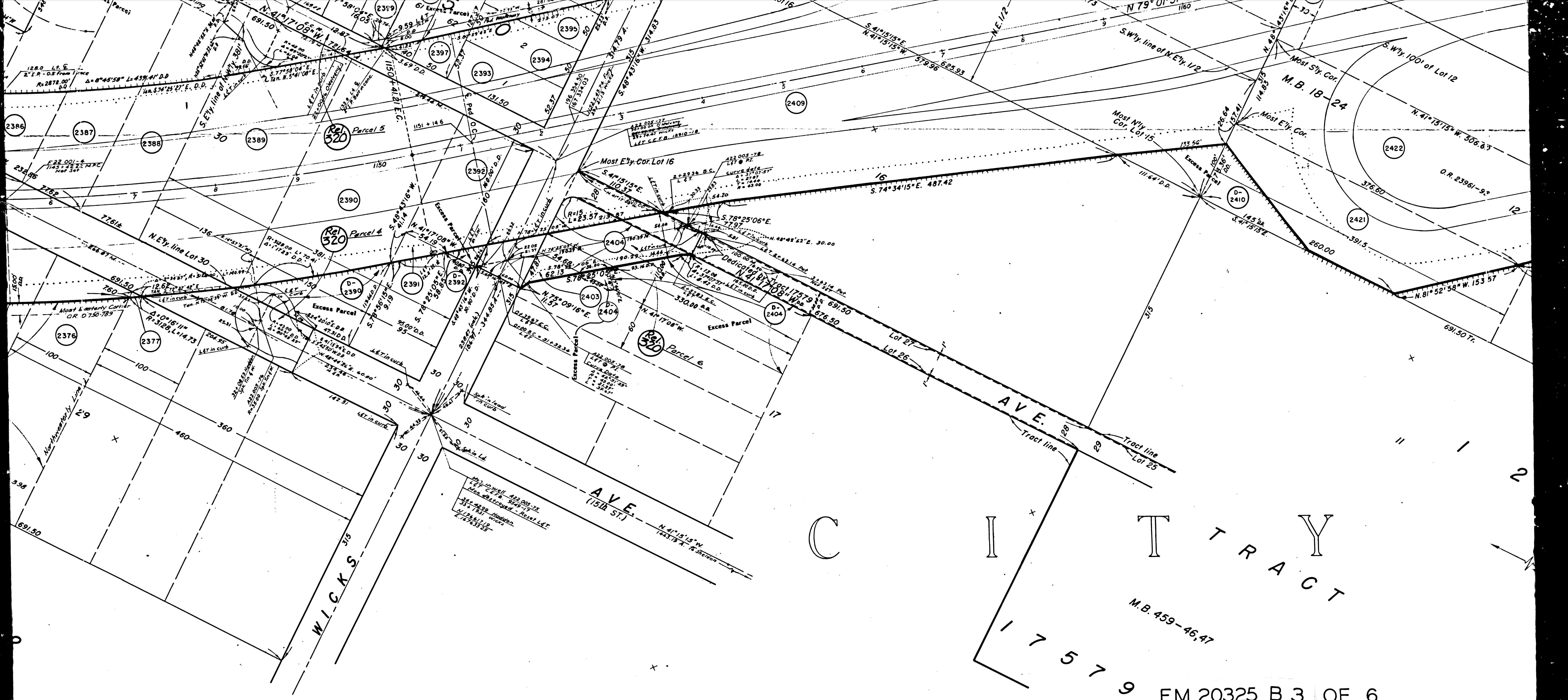
F.M. 20325 B I OF 6

- |  |   |   |   |  |  |   |  |   |  |   |
|--|---|---|---|--|--|---|--|---|--|---|
| 2263 Joseph L. Jones, et ux<br>D 591-544 1-2-38            | 2267 Kenneth A. Bates, et ux<br>D 80-722 8-24-38      | 2271 Daniel E. Tracey, et ux<br>D 245-113 2-5-39  | 2284 Edward S. Gross, et ux<br>D 3612-376 8-11-37   | 2297 James R. Anderson, et ux<br>D 47-62 4-7-38            | 2301 Francis R. Stetler<br>D 2424-670 5-24-37      | 2309 Edmond L. Hendley, et ux<br>D 219-309 4-2-37 | 2317 Chas. Hill, et al<br>D 219-309 4-2-37           | 2325 State to Walter & Lillian Holland<br>D 10-9-62 10-9-62 | 2341 S. B. Taylor<br>D 260-421 8-1-37              | 2349 State to Richard V. Shaw<br>D 2277-222 2-27-37 |
| 2256 State to Joseph L. Jones, et ux<br>D 1062-82 12-12-30 | 2266 James D. McNaughton, et ux<br>D 360-237 11-12-37 | 2274 Henry J. Sherman, et ux<br>D 243-308 8-25-38 | 2285 Cecil E. Keller, et ux<br>D 243-221 8-14-38    | 2298 State to Harold M. Harns, et ux<br>D 2452-699 2-29-37 | 2307 Herbert Matthews, et ux<br>D 3537-126 5-1-37  | 2315 Mary A. Bookley<br>D 353-166 8-3-37          | 2323 Bruce G. Gourley, et ux<br>D 244-87 10-28-39    | 2331 State to Fred Shubin<br>D 2283-416 7-11-33             | 2342 Rogelio T. Baio, et ux<br>D 3293-225 1-24-37  | 2350 State to Paul A. Norm<br>D 332-222 6-2-37      |
| 2255 Lillian Clark<br>D 2264-400 9-12-36                   | 2265 Wilard M. Sidekohom, et ux<br>D 310-820 4-18-38  | 2275 Day E. Varney, et ux<br>D 181-129 8-8-38     | 2287 Walter H. Peterson, et ux<br>D 668-663 6-18-38 | 2299 State to City of Los Angeles<br>D 181-129 8-8-38      | 2308 Kenyon D. Morris, Jr.<br>D 206-449 6-18-37    | 2314 Mabel M. Schroeder<br>D 356-314 2-5-37       | 2326 Willard L. Vaughn, et ux<br>D 354-314 2-5-37    | 2334 State to J. B. Fontaine<br>D 2392-57 2-7-42            | 2343 Thomas P. Peroni, et ux<br>D 322-35 11-1-38   | 2351 George James P.<br>D 342-389 5-22-37           |
| 2254 Roger E. Kerns<br>D 33782-284 10-7-37                 | 2268 Adrian Wilson<br>D 183-332 8-12-37               | 2276 Carl R. Griffin, et ux<br>D 5078-240 3-28-38 | 2289 Louis F. Hursi, et ux<br>D 277-112 6-10-37     | 2292 State of California<br>D 218-104 7-11-37              | 2300 Sylvester Ball, et ux<br>D 262-325 10-14-38   | 2313 Albert E. Thomas, et ux<br>D 34-147 8-28-37  | 2327 John T. Willson, et ux<br>D 306-244 8-21-37     | 2335 John Morris, et ux<br>D 307-237 7-15-37                | 2344 Vernon E. Baswell, et ux<br>D 321-317 4-25-37 | 2352 State to<br>D 321-317 4-25-37                  |
| 2253 Mario De Lara<br>D 114-200 5-29-39                    | 2269 Arnold G. Appelen, et ux<br>D 332-4-207 8-9-37   | 2278 Mary B. Laxton<br>D 332-4-207 8-9-37         | 2293 Eino H. Kangas, et ux<br>D 218-104 7-11-37     | 2299 Leon V. Barnes, et ux<br>D 3334-146 8-15-37           | 2304 Jack Elin, et ux<br>D 242-540 6-8-37          | 2316 John Morris, et ux<br>D 307-237 7-15-37      | 2328 Franklin W. Klempner<br>D 311-11 8-21-37        | 2336 State to<br>D 321-317 4-25-37                          | 2346 Jean DeBarry<br>D 274-332 4-2-38              | 2353 East Ferraro, et ux<br>D 274-332 4-2-38        |
| 2252 Olive E. Sheeley<br>D 3002-189 1-16-36                | 2266 Richard J. Hills, et ux<br>D 332-4-207 8-9-37    | 2279 Earl D. Elrod, et ux<br>D 332-4-207 8-9-37   | 2294 Norton B. James, et ux<br>D 332-4-207 8-9-37   | 2300 Edith L. Henderson<br>D 332-4-207 8-9-37              | 2314 Robert J. La Fontaine<br>D 332-4-207 8-9-37   | 2316 S.M. Clossman<br>D 332-4-207 8-9-37          | 2329 Raymond E. Porter, et ux<br>D 332-4-207 8-9-37  | 2337 Lloyd M. Vaughn, et ux<br>D 332-4-207 8-9-37           | 2347 William H. Brock, et ux<br>D 332-4-207 8-9-37 | 2354 Wila A. Coleman<br>D 332-4-207 8-9-37          |
| 2251 Joseph D. Clark<br>D 311-889 12-22-38                 | 2261 Jesse C. Aquino, et ux<br>D 264-629 4-7-38       | 2280 Charles M. Holmes, et ux<br>D 264-629 4-7-38 | 2295 Edith L. Henderson<br>D 332-4-207 8-9-37       | 2302 Fred J. Bruff, et ux<br>D 332-4-207 8-9-37            | 2315 Walter D. Parins, et ux<br>D 332-4-207 8-9-37 | 2317 S.M. Clossman<br>D 332-4-207 8-9-37          | 2330 Raymond S. Johnson, et ux<br>D 332-4-207 8-9-37 | 2338 Lloyd M. Vaughn, et ux<br>D 332-4-207 8-9-37           | 2348 William H. Brock, et ux<br>D 332-4-207 8-9-37 | 2355 Wila A. Coleman<br>D 332-4-207 8-9-37          |
| 2250 M.R. Slawson, et ux<br>D 30307-49 2-14-36             | 2262 Morton B. Harper<br>D 2326-32 3-12-39            | 2281 Dale F. Peters, et ux<br>D 2326-32 3-12-39   | 2296 Harold H. Harns, et ux<br>D 2326-32 3-12-39    | 2304 Anthony Duda, et ux<br>D 332-4-207 8-9-37             | 2316 S.M. Clossman<br>D 332-4-207 8-9-37           | 2317 S.M. Clossman<br>D 332-4-207 8-9-37          | 2331 James F. Delaney<br>D 332-4-207 8-9-37          | 2339 Mallice N. Bonds, et ux<br>D 332-4-207 8-9-37          | 2348 State to Maurice Steg<br>D 332-4-207 8-9-37   | 2355 State to<br>D 332-4-207 8-9-37                 |
| 2249 Mortimer R. Slawson<br>D 306-879 12-12-38             | 2265 Orrin K. Earls, et ux<br>D 2181-502 3-10-37      | 2282 Orval C. Rider, et ux<br>D 2181-502 3-10-37  | 2297 Jay R. Morin, et al<br>D 2181-502 3-10-37      | 2305 Anthony Duda, et ux<br>D 332-4-207 8-9-37             | 2316 S.M. Clossman<br>D 332-4-207 8-9-37           | 2317 S.M. Clossman<br>D 332-4-207 8-9-37          | 2332 Jacob Bruce Renick, et ux<br>D 332-4-207 8-9-37 | 2340 Cecil Sage, et ux<br>D 332-4-207 8-9-37                | 2348 State to Maurice Steg<br>D 332-4-207 8-9-37   | 2355 State to<br>D 332-4-207 8-9-37                 |
| 2248 Leo V. Howell, et al<br>D 229-37 1-12-37              | 2264 Clifford C. Kirksey, et ux<br>D 229-37 1-12-37   | 2283 Kennard Johnson, et ux<br>D 229-37 1-12-37   | 2298 Norman Gauget, et ux<br>D 229-37 1-12-37       | 2306 Francis J. Shea, et ux<br>D 332-4-207 8-9-37          | 2316 S.M. Clossman<br>D 332-4-207 8-9-37           | 2317 S.M. Clossman<br>D 332-4-207 8-9-37          | 2333 Mallice N. Bonds, et ux<br>D 332-4-207 8-9-37   | 2340 Cecil Sage, et ux<br>D 332-4-207 8-9-37                | 2348 State to Maurice Steg<br>D 332-4-207 8-9-37   | 2355 State to<br>D 332-4-207 8-9-37                 |



F.M. 20325 B 2 OF 6

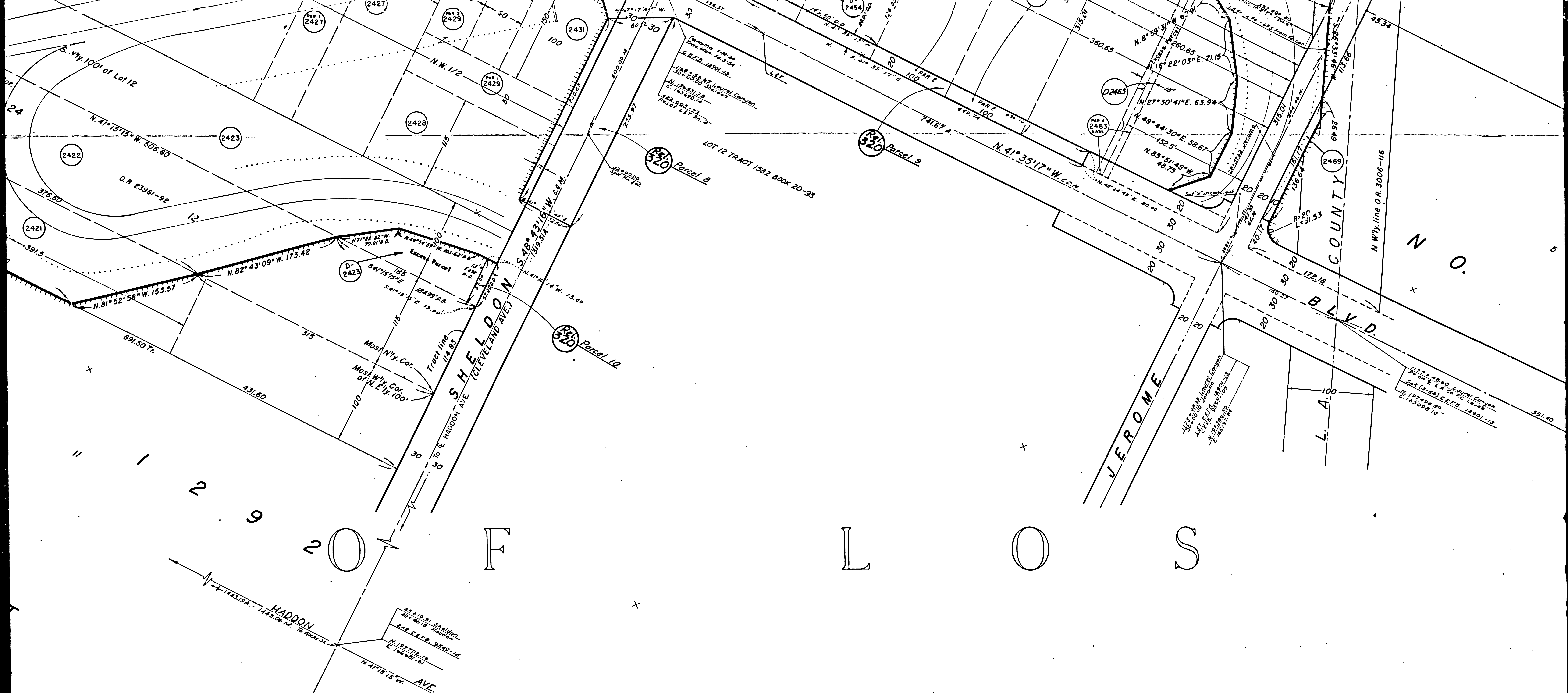
2341	State to S. B. Taylor	2342	State to Rafael U. Shank, et ux	2343	State to George Homus Rebois, et ux	2344	State to Vernon E. Barwell, et ux	2345	State to Cora Boatright	2346	State to Jess Dehner	2347	State to William H. Brock, et ux	2348	State to E. L. Knight	2349	State to Maurice Storr	2350	State to Paul A. Normandin, et ux	2351	State to Rosie Raso, (Estate)	2352	State to East Ferraro, et ux	2353	State to Julia A. Coleman	2354	State to Evelyn M. Smiley	2355	State to Gerald Shank, et ux	2356	State to Henry R. Antoniewski, et ux	2357	State to Anthony T. Caroziani	2358	State to James Malouiss, et ux	2359	State to Rodney M. Addcox, et ux	2360	State to James Basso, et ux	2361	State to Anna Paggi	2362	State to N. L. Sammelman, et ux	2363	State to John Matthews, et ux	2364	State to Hubert L. Taylor, et ux	2365	State to Don G. McLenahan, et ux	2366	State to Betsy Ross	2367	State to Edward L. Myle	2368	State to Robert C. Mills	2369	State to Jack H. Thompson, et ux	2370	State to Victor H. Bush, et ux	2371	State to Alfred E. Hawthorth, et ux	2372	State to William Sage, et ux	2373	State to Elmer M. Linzy	2374	State to Burdette W. Taylor, et ux	2375	State to Phillip R. Cooper, et ux	2376	State to Charles M. Harris	2377	State to Fred Stuber, et ux	2378	State to Fred Stuber, et ux	2379	State to Fred Stuber, et ux	2380	State to Fred Stuber, et ux	2381	State to Fred Stuber, et ux	2382	State to Fred Stuber, et ux	2383	State to Fred Stuber, et ux	2384	State to Fred Stuber, et ux	2385	State to Fred Stuber, et ux	2386	State to Fred Stuber, et ux	2387	State to Fred Stuber, et ux	2388	State to Fred Stuber, et ux	2389	State to Fred Stuber, et ux	2390	State to Fred Stuber, et ux	2391	State to Fred Stuber, et ux	2392	State to Fred Stuber, et ux	2393	State to Fred Stuber, et ux	2394	State to Fred Stuber, et ux	2395	State to Fred Stuber, et ux	2396	State to Fred Stuber, et ux	2397	State to Fred Stuber, et ux	2398	State to Fred Stuber, et ux	2399	State to Fred Stuber, et ux	2400	State to Fred Stuber, et ux
------	-----------------------	------	---------------------------------	------	-------------------------------------	------	-----------------------------------	------	-------------------------	------	----------------------	------	----------------------------------	------	-----------------------	------	------------------------	------	-----------------------------------	------	-------------------------------	------	------------------------------	------	---------------------------	------	---------------------------	------	------------------------------	------	--------------------------------------	------	-------------------------------	------	--------------------------------	------	----------------------------------	------	-----------------------------	------	---------------------	------	---------------------------------	------	-------------------------------	------	----------------------------------	------	----------------------------------	------	---------------------	------	-------------------------	------	--------------------------	------	----------------------------------	------	--------------------------------	------	-------------------------------------	------	------------------------------	------	-------------------------	------	------------------------------------	------	-----------------------------------	------	----------------------------	------	-----------------------------	------	-----------------------------	------	-----------------------------	------	-----------------------------	------	-----------------------------	------	-----------------------------	------	-----------------------------	------	-----------------------------	------	-----------------------------	------	-----------------------------	------	-----------------------------	------	-----------------------------	------	-----------------------------	------	-----------------------------	------	-----------------------------	------	-----------------------------	------	-----------------------------	------	-----------------------------	------	-----------------------------	------	-----------------------------	------	-----------------------------	------	-----------------------------	------	-----------------------------	------	-----------------------------



F.M. 20325 B 3 OF 6

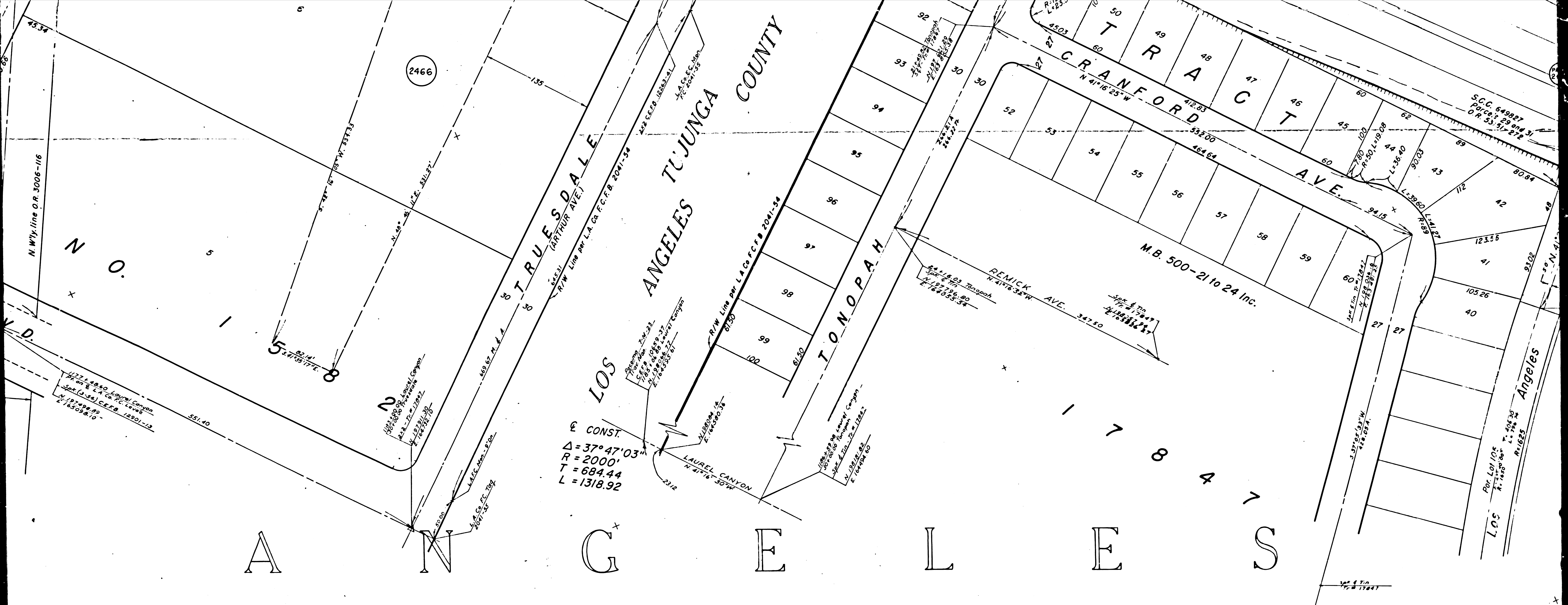
D2384	State to Fred Shubin, et ux D.D. 12-3-63 D2274-885	2390	Primo R. D'Amico, et ux Fee D2270-150	2399	James E. Kimbrel, et ux Fee D240-36	2403	Anna C. Paggi Fee D293-833	2418	W.C. Christanson Fee D363-828	D2410	Sheldon Lloyd Berlant, et ux D.D. 4-29-64 D2439-637	2421	James H. Miller, et ux Fee D392-800	2431	E.D. Felix Fee D194-
D2390	State to John M. Stewart, et ux D.D. 11-18-63 D2257-879	2391	John M. Stewart, et ux Fee D213-61			2404	Robert Johnson Peckpaugh Fee D295-303	2416	Leo L. Hitchcock, et al Fee D332-600	D2429	State to A.E. Wallace D.D. 10-21-63 D2226-889	2422	Park L. Randol, et ux Fee D282-923	2446	Fee
D2392	State to John M. Stewart, et ux D.D. 12-11-63 D2285-633	2392	Howard L. Pledger, et ux Fee D2722-82			D2404	State to Anna C. Paggi, a widow D.D. 8-15-60 D292-377	2413	M.S. Kramer, et ux Fee D338-627	D2418	State to Elizabeth Matheny D.D. 4-3-63 D2050-352	2423	Frank Parlapian, et ux Fee D236-389	2447	Joseph
D2394	State to Fred Shubin, et ux D.D. 12-3-63 D2271-891	2393	Shoji Yabuta, et ux Fee D2089-128			2409	Meron C. Maddox, et ux D.D. 2-26-59 D292-976	D(2404)	State to S. Aiken, et al D.D. 9-12-63 D2179-602	D2423	State to Robert L. Barron, et ux D.D. 10-6-64 D2684-7	2424	Russ W. Booth, et ux Fee D393-188	2448	Arac
Rel. 320	State to City of L.A. D.D. 3-9-64 D2210-779 to 822	2394	Virgil Durmont Fee D3130-321			2410	John George Bance, et ux Fee D292-306			D2447	State to J. Mischok, et ux D.D. 9-12-63 D2179-396	2425	Ruth White, et al Fee D266-124	2449	Yarmon
		2395	James H. Spence, et ux Fee D2722-82			2411	Catherine A. Mauo Fee D266-923			D2415	State to A.E. Wallace D.D. 10-21-63 D2226-889	2427	Marshall W. Tuttle, et ux Fee D266-350		
		2396	Thomas G. Allums Fee D2914-112			2412	Nelson Crispin, et ux Fee D292-671					2428	Patricia F. Tuttle, (estate) Fee D292-359		
		2397	James Dillon Goodrich, et ux Fee D2924-112			2414	Ellen How Erskine, et al Fee D292-671					2429	Leonard Ray Lane, et ux Fee D2070-316		
		2398	Virion E. Payne, et ux Fee D292-782			2415	Verne O. Kane, et ux Fee D292-671					2430	David Di Cicco, et ux Fee D292-782		





F.M. 20325 B 4 OF 6

- |   |   |  |  |  |
|---|---|--|--|--|
| <p>2431 E. D. Felix, et ux<br/>Fee 2-22-38<br/>D 2184-338</p> <p>2446 Mishook<br/>Fee</p> <p>2447 Joseph Almadoff, et ux<br/>Fee 6-22-37<br/>D 1516-318</p> <p>2448 Arax Arkin<br/>Fee 2-14-38<br/>D 228-337</p> <p>2449 Vernon Wooley, et ux<br/>Fee 2-28-37<br/>D 228-337</p> | <p>2453 Mariano N. Fushi, et ux<br/>Fee 8-1-39<br/>D 864-116</p> <p>2454 Dewey Mae Griggs<br/>Fee 5-23-37<br/>D 3327-387</p> <p>2456 Charles E. Mosier, et ux<br/>Fee 7-30-38<br/>D 170-434</p> <p>2457 Donald E. Hunter<br/>Fee 5-2-39<br/>D 338-335</p> <p>2458 Harold A. Ely<br/>Fee 2-20-39<br/>D 338-369</p> <p>2459 Calvin M. Hooiman, et ux<br/>Fee 5-18-38<br/>D 266-349</p> <p>2462 Martin T. Keener, et ux<br/>Fee 12-22-39<br/>D 700-86</p> <p>2463 Frank E. Moellendy<br/>Fee 3-22-39<br/>D 3069-327</p> <p>2464 Vernon Wooley, et ux<br/>Fee 8-18-39<br/>D 372-387</p> | <p>2465 Julian G. Baird, et ux<br/>Fee 8-27-39<br/>D 198-778</p> <p>2480 Richard D. Albright, et ux<br/>Fee 10-11-39<br/>D 52623-210</p> <p>D 2454 State to<br/>Wm. S. Brown, et ux<br/>D. D. 2-3-39<br/>D 2172-32</p> <p>D 2463 State to<br/>Julian G. Baird, et ux<br/>D. D. 2-14-40<br/>D 831-971</p> <p>D 2463 State to<br/>Martin Keener, et ux<br/>D. D. 2-7-40<br/>D 2352-34</p> <p>2438 Anna Szabo, et al<br/>Fee 7-8-38<br/>D 2094-602<br/>For continuation, see F-1388</p> <p>2439 Martin Keener, et al<br/>Fee 7-8-38<br/>D 2094-602</p> <p>2441 Kemp Sisk<br/>Fee</p> <p>2445 C. D. Inskeep, et ux<br/>Fee 8-3-39<br/>D 2338-353</p> | <p>2451 Goldie L. Haugen<br/>Fee 8-8-37<br/>D 3287-110</p> <p>2452 Victor J. Billings, et ux<br/>Fee 5-24-37<br/>D 2870-182</p> <p>2453 Thomas N. Rainwaters<br/>Fee 8-22-37<br/>D 3410-216</p> <p>D 2450 State to<br/>Alma Sue Emrick<br/>D. D. 11-13-39<br/>D 2237-883</p> | <p>2466 Angelo C. Strongo, et ux<br/>Fee 3-28-62<br/>D 1620-609</p> <p>2469 Rosemary B. Chappel, et al<br/>Fee 11-8-61<br/>D 473-643</p> <p>2470 Irving R. Chappel, Sr, et al<br/>Fee 7-3-61<br/>D 1273-712</p> <p>2471 Frank C. Daley<br/>Fee 5-29-39<br/>D 284-937</p> <p>2472 City of Los Angeles<br/>Fee</p> <p>D 2463 State to<br/>Rosemary B. Chappel, et al<br/>D. D. 4-17-62<br/>D 1273-712</p> <p>D 2471 State to<br/>Angelo C. Strongo, et ux<br/>D. D. 8-14-62<br/>D 1722-124</p> |
|---|---|--|--|--|

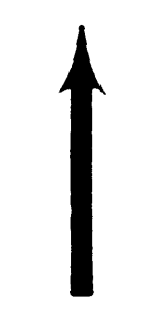


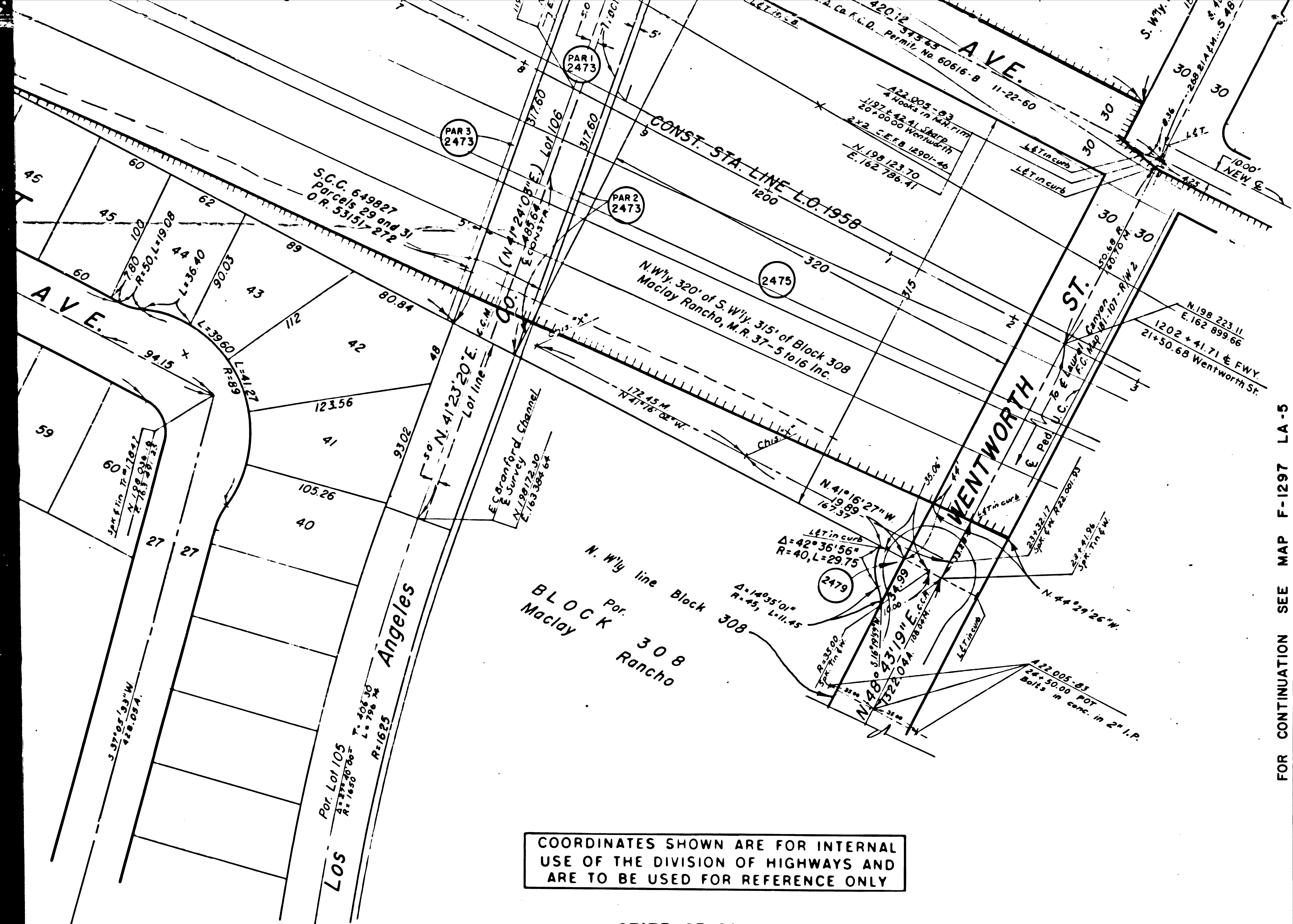
E CONST.  
 $\Delta = 37^\circ 47' 03''$   
 $R = 2000'$   
 $T = 684.44$   
 $L = 1318.92$

- Angelo C. Strongo et al  
 Fee 2-28-62  
 D 1628-603
- Rosemary B. Chappel et al  
 Fee 11-8-61  
 D 1213-623
- Irving R. Chappel, et al  
 Fee 7-3-61  
 D 1273-77
- Frank C. Esley  
 Fee 5-29-59  
 D 1288-937
- City of Los Angeles  
 Fee
- State to Rosemary B. Chappel et al  
 Fee 8-17-62  
 D 1283-27
- State to Angelo C. Strongo et al  
 Fee 8-14-62  
 D 1272-742

- L.A. Co. F.C.D.  
 Fee 9-20-62  
 D 1782-395
- State to Bill Shubin  
 D.D. 3-16-64  
 D 2395-270
- Herrick Homes, Inc et al  
 Fee by Ord. 6-30-62  
 D 896-377
- Herrick Homes, Inc et al  
 Fee by Ord. 8-30-60  
 D 894-377
- Robert C. Muir et al  
 Fee 11-3-58  
 D 868-303
- Abraham Spiegel  
 Fee 9-9-62  
 D 1272-820
- Joseph Helbal et al  
 Fee by Ord. 12-30-59  
 D 795-742
- Herrick Homes, Inc  
 Fee 6-20-62  
 D 1856-46
- Harold A. Archuleta et al  
 Fee 1-18-61  
 D 1018-259
- L.A. Co. F.C.D.  
 Fee 8-8-62  
 D 1774-732

F.M. 20325 B 5 OF 6





FOR CONTINUATION SEE MAP F-1297 LA-5

COORDINATES SHOWN ARE FOR INTERNAL USE OF THE DIVISION OF HIGHWAYS AND ARE TO BE USED FOR REFERENCE ONLY

STATE OF CALIFORNIA  
 HIGHWAY TRANSPORTATION AGENCY  
 DEPARTMENT OF PUBLIC WORKS  
 DIVISION OF HIGHWAYS

ROAD: 7-LA-5  
 (Old 7-LA-4-LA)

**RIGHT OF WAY MAP**

LANKERSHIM BLVD. (P.M. 34.99)  
 TO  
 WENTWORTH ST. (P.M. 36.62)



CALIFORNIA STATE COORDINATE SYSTEM ZONE VII (LAMBERT)  
 BASIS OF BEARING TAKEN FOR THIS MAP @ LANKERSHIM  
 N. 0°13'45"E.

MONUMENTATION FROM CCM 22.72 REV. 4-19-63 & CCM 22.73  
 ALSO "A" NOTES 22.005 & "F" NOTES 22.001

REPRODUCIBLE COPY FILED WITH L.A. CO. SURVEYOR 5-65 F.M. 20325 B 6 OF 6

EA 112 21 @ G

1. Pl. 53-C, D-5, 6

F-1296