

SECTION 16

SECTION 15
T.5N. R.9W.
S.B. & M.

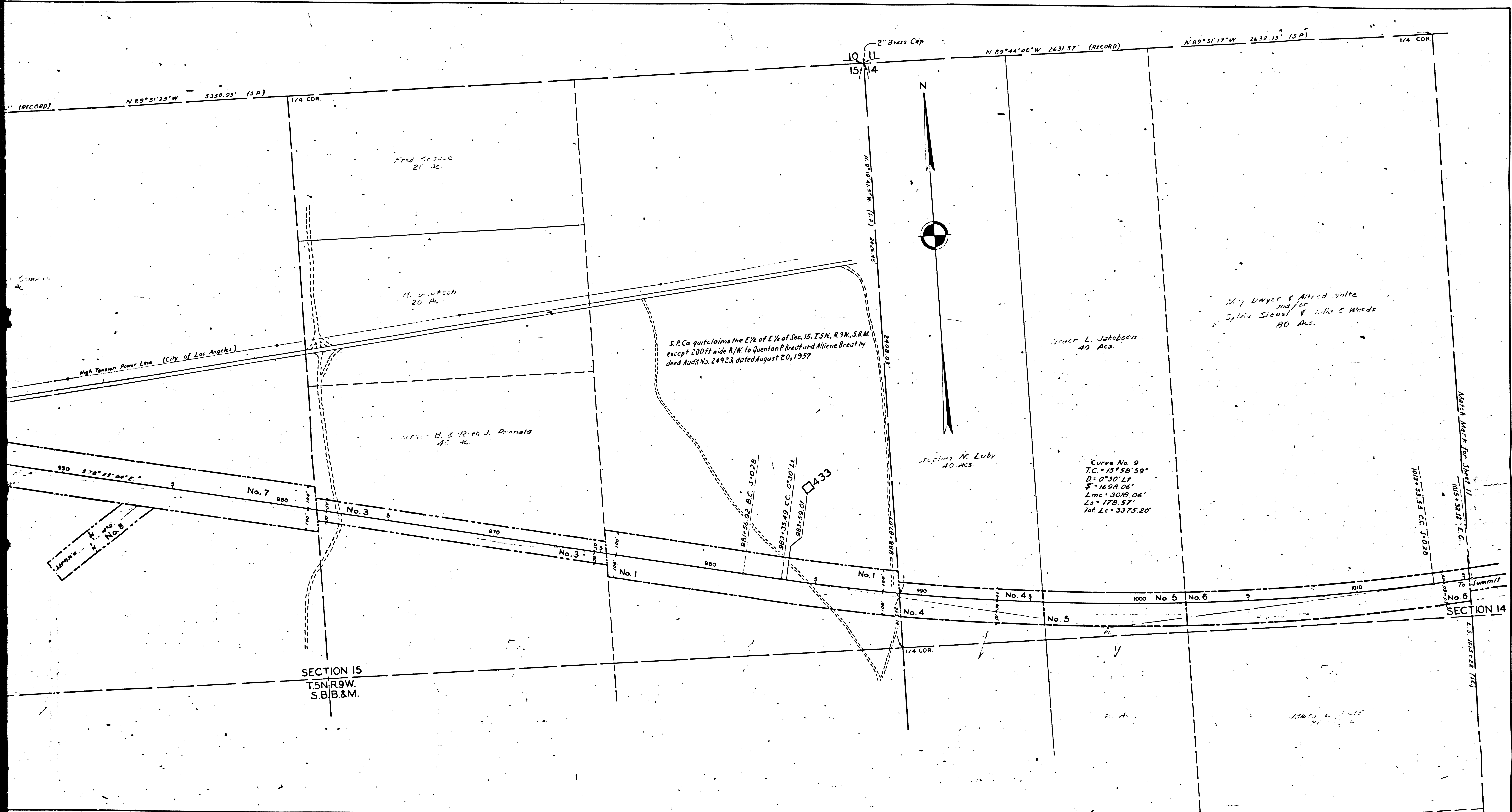
F.M. 20326 - SHT. 10 OF 15

FRAME A 1 OF A 2

61790
10

SCHEDULE OF PROPERTY

No.	GRANTOR	GRANTEE	INSTR.	DATE	RECORD	CUST. No.	AREA		REMARKS
							SQ. FT.	ACRES	
1	S. P. Land Co.	S. P. Co.	Grant Deed	Dec. 31, 1956	CR 53465 P. 342, M. 23, 1957	24557	6,262	Grants perpetual R/W 200 ft wide across E 1/2 of E 1/2 of Sec 15, T.5N. R.9W. S.B. & M. AFE 84533-1962	
2	Chas. E. Irwin, Trustee	"	"	July 26, 1957	" 53279 P. 88, Aug. 8, 1957	25098	6,784	10.944 acs. acq'd. 3.560 acs. shown as Par. 3, Sheet 9, AFE 84533-1962	
3	Arthur B. Pennala et ux	"	"	June 25, 1957	" 55608, P. 158, Sep. 16, 1957	25147	3,140	AFE 84533-1962	
4	Stephan N. Luby et ux	"	"	"	June 25, 1957	Jan. 10, 1958	25396	2,300	"
5	Grace L. Jakobsen	"	"	"	"	Jan. 10, 1958	25395	2,300	"
6	Sylvia Siegel	"	"	Nov. 19, 1957	" 54291, P. 96, Dec. 20, 1957	25405	4,600	See Note No. 1 AFE 84533-1962	
7	S. P. Land Co.	S. P. Co.	"	Nov. 8, 1960	" D1081, P. 775, Jan. 4, 1961	27622	12,563	Also grants easement shown as Par. 8. See Note No. 2 AFE 84533-1962	
8	"	"	Easement	"	"	"	1,113	Easement for drainage channel, AFE 84533-1962	
9	S. P. Land Co.	"	Quitclaim	Jan. 11, 1962	" D157, P. 225, Feb. 19, 1962	27622	"	Interests of interest in 12,563 acs.	



SCHEDULE OF PROPERTY						
TR.	DATE	RECORD	CUST. No	AREA		REMARKS
				SQ. FT.	ACRES	
Acq.	Dec 31, 1956	C.R. 53465 P. 342, un 25, 1957	24557	6,262		Grants perpetual R/W 200 ft wide across E 1/2 of E 1/4 of Sec 15, T. 5N, R. 9W, S. 8M AFE 84533-1962.
"	July 26, 1957	" 53279 P. 48 Aug 8, 1957	25098	6,784		10.344 acs. acq'd., 3.360 acs. shown as Par. 3, Sheet 9, AFE 84533-1962.
"	June 2, 1957	" 53608 P. 158 Sept 16, 1957	25167	3,140		AFE 84533-1962.
"	"	Jan 10, 1958	25396	2,300		"
"	"	Jan 10, 1958	25395	2,300		"
"	Nov 19, 1957	" 54291 P. 96 Dec 20, 1957	25405	4,600		See Note No. 1, AFE 84533-1962.
"	Nov 8, 1960	" D1081, P. 715, Jan. 4, 1961	27622	12,563		Also grants easement shown as Par. 8. See Note No. 2, AFE 84533-1962.
"	Jan 11, 1962	" D. 517 P. 45, Feb 19, 1962	27622	1,113		Easement for drainage channel. AFE 84533-1962.
"	"	"	"	"		Grants mineral interest in 12,563 acs.

Note No. 1: Except three-fourths of all oil, crude oil, petroleum, gas, brine, asphaltum and all kindred substances and other minerals under and in said land.
 Note No. 2: All minerals, oil, petroleum, natural gas, and other hydrocarbons reserved.

F.M. 20326 - SHT. 10 OF 15
 FRAME A 2 OF A 2

RIGHT OF WAY AND TRACK MAP
 MAIN LINE
 SOUTHERN PACIFIC COMPANY
 OPERATED BY
 SOUTHERN PACIFIC COMPANY
 SAN JOAQUIN DIVISION, LOS ANGELES COUNTY, CALIFORNIA
 FROM STATION 906+30 TO STATION 1015+22
 SCALE 1 INCH = 200 FEET
 VALUATION DEPARTMENT
 SAN FRANCISCO, CALIFORNIA

