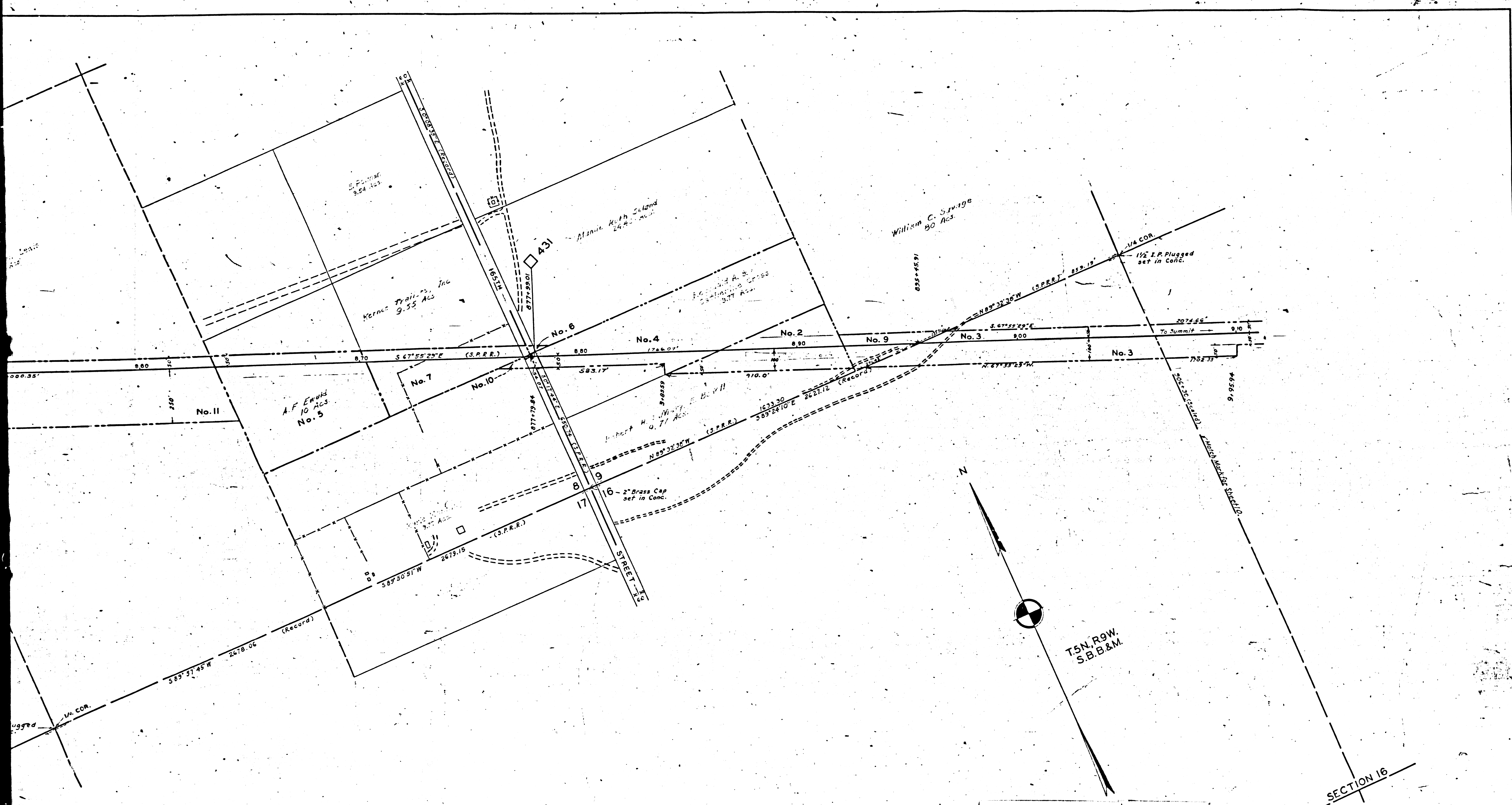


F.M. 20326 - SHT. 9 OF 15

FRAME A 1 OF A 2

61790  
9

SCHEDULE OF PROPERTY								
No.	GRANTOR	GRANTEE	INSTR.	DATE	RECORD	CUST. No.	AREA	
							Sq. Ft.	Acres
1	Emma Elizabeth Bender	Southern Pacific Co.	Grant Deed	July 26, 1957	0855218, P. 425, Aug 1, 1957	24396	19,257	AF
2	Robert H. Bedell et ux	"	"	" 15, "	" 55161, P. 88, July 26, 1957	24397	1,868	"
3	Chas. E. Shinson, trustee	"	"	July 26, 1957	" 55279, P. 48, Aug. 8, 1957	25098	3,960	10.5
4	Regina Id. A. Cross et ux	"	"	July 15, 1957	" 55144, P. 397, July 24, 1957	25216	8,104	AF
5	A. F. Ewald	"	"	Oct. 15, 1957	" 55871, P. 174, Oct. 17, 1957	25288	6,987	"
6	Mama Ruth Sealand	"	"	Sept. 5, 1957	" 55859, P. 273, Oct. 24, 1957	25289	1,900	"
7	Aliga Investments Co.	"	"	Nov. 22, 1957	" 56125, P. 111, Feb. 26, 1958	25438	2,934	Exc.
8	Carl M. Wiley et ux	"	"	Sept. 3, 1958	" 56258, P. 343, Oct. 18, 1958	26194	12,280	AF
9	William C. Savage et ux	"	"	Oct. 14, 1958	" 56289, P. 352, Dec. 3, 1958	26085	4,520	"
10	William C. Haswell et ux	"	"	Aug. 5, 1960	" 8740, P. 14, Aug. 10, 1960	27463	3,510	"
11	H. E. Lewis et al, Def.	"	"	Final Order May 24, 1960	" 88342, P. 66, May 25, 1960	27520	3,988	Acq.



F.M. 20326 -SHT. 9 OF 15

FRAME A 2 OF A 2

RIGHT OF WAY AND TRACK MAP  
 MAIN LINE  
 SOUTHERN PACIFIC COMPANY  
 OPERATED BY  
 SOUTHERN PACIFIC COMPANY  
 SAN JOAQUIN DIVISION, LOS ANGELES COUNTY, CALIFORNIA  
 FROM STATION 819+88 TO STATION 906+30  
 SCALE 1 INCH = 200 FEET  
 VALUATION DEPARTMENT  
 SAN FRANCISCO, CALIFORNIA

V-98  
 9

No.	GRANTOR	GRANTEE	INSTR.	DATE	RECORD	CUST. No.	AREA		REMARKS
							SQ. FT.	ACRES	
1	Emma Elizabeth Bender	Southern Pacific Co.	Grant Deed	July 26, 1957	O.R. 55218, P. 425, Aug 1, 1957	24986	19,257	0.44	AFE 84533-1962.
2	Robert H. Badelle et al.	"	"	" 15 "	+ 55161, P. 88, July 26, 1957	24981	1,868	"	"
3	Chas. E. Stimson, Trustee	"	"	July 26, 1957	+ 55279, P. 48, Aug. 8, 1957	25098	3,960	0.09	10,944 acs. approx., 6,794 acs. shown on Plan B, Sheet 10, AFE 84533-1962.
4	Regina A. Cross et ux	"	"	July 15, 1957	+ 55144, P. 397, July 24, 1957	25216	8,104	0.19	AFE 84533-1962.
5	A. F. Ewald	"	"	Oct. 15, 1957	+ 55871, P. 174, Oct. 17, 1957	25228	6,097	"	"
6	Mamie Ruth Sealand	"	"	Sep. 5, 1957	+ 55955, P. 273, Oct. 24, 1957	26224	1,090	"	"
7	Argo Investments Co.	"	"	Nov. 22, 1957	+ BK D. 25, P. 11, Feb. 26, 1958	25438	2,934	0.07	Excepting and reserving 1/2 interest on all minerals, ore, oil, petroleum or other hydrocarbons subs. AFE 84533-1962.
8	Carl M. Miley et ux	"	"	Sept. 3, 1958	+ D. 250, P. 143, Oct. 28, 1958	26194	17,280	0.40	AFE 84533-1962.
9	William C. Savage et ux	"	"	Oct. 14, 1958	+ D. 299, P. 335, Dec. 9, 1958	26085	40,520	0.93	"
10	William C. Haswell et ux	"	"	Aug. 3, 1960	+ B. 940, P. 14, Aug. 10, 1960	27463	5530	0.13	"
11	W. E. Lewis et al., Def.	"	"	May 24, 1960	+ B. 942, P. 66, May 25, 1960	27520	3,996	0.09	Acquires easement for RR purposes through condemnation. Also rec. in O.R. D. 651, P. 323, May 31, 1960. AFE 84533-1962.