

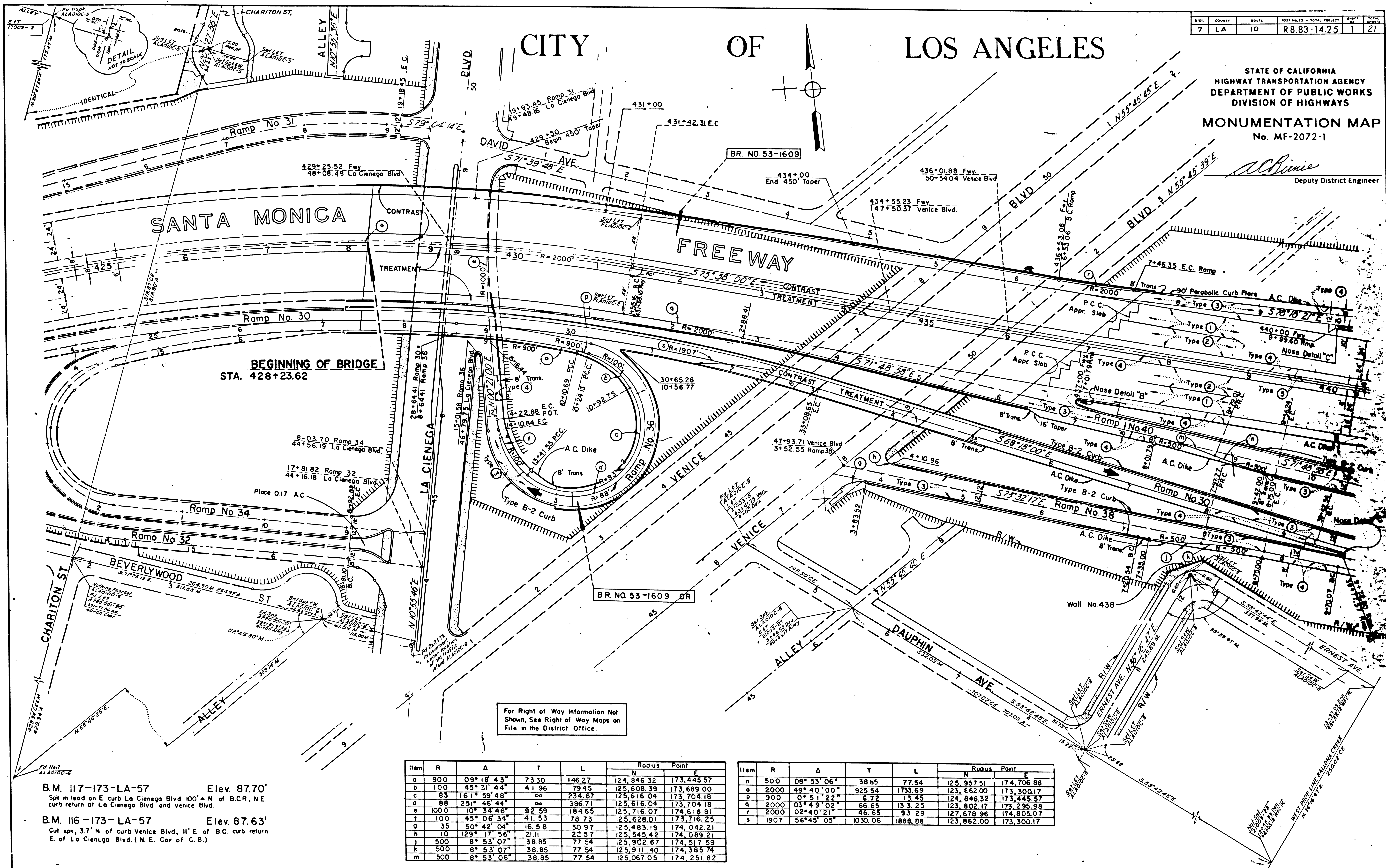
DIST.	COUNTY	ROUTE	POST MILES - TOTAL PROJECT	SHEET	TOTAL SHEETS
7	LA	10	R8.83-14.25	1	21

CITY OF LOS ANGELES

STATE OF CALIFORNIA
HIGHWAY TRANSPORTATION AGENCY
DEPARTMENT OF PUBLIC WORKS
DIVISION OF HIGHWAYS

MONUMENTATION MAP
No. MF-2072-1

albinie
Deputy District Engineer



B.M. 117-173-LA-57 Elev. 87.70'
Spk in lead on E curb La Cienega Blvd 100' N of B.C.R., N.E. curb return at La Cienega Blvd and Venice Blvd

B.M. 116-173-LA-57 Elev. 87.63'
Cut spk, 3.7' N of curb Venice Blvd, 11' E of B.C. curb return E of La Cienega Blvd. (N.E. Cor. of C.B.)

Item	R	Δ	T	L	Radius	Point	E
a	900	09° 18' 43"	73.30	146.27	124,846.32	173,445.57	
b	100	45° 31' 44"	41.96	79.46	125,608.39	173,689.00	
c	83	161° 59' 48"	∞	234.67	125,616.04	173,704.18	
d	88	251° 46' 44"	∞	386.71	125,616.04	173,704.18	
e	1000	10° 34' 46"	52.59	184.65	125,716.07	174,616.81	
f	100	45° 06' 34"	41.53	78.73	125,628.01	173,716.25	
g	35	50° 42' 04"	16.58	30.97	125,483.19	174,042.21	
h	10	129° 17' 56"	21.11	22.57	125,545.42	174,089.21	
j	500	8° 53' 07"	38.85	77.54	125,902.67	174,517.59	
k	500	8° 53' 07"	38.85	77.54	125,911.40	174,385.74	
m	500	8° 53' 06"	38.85	77.54	125,067.05	174,251.82	

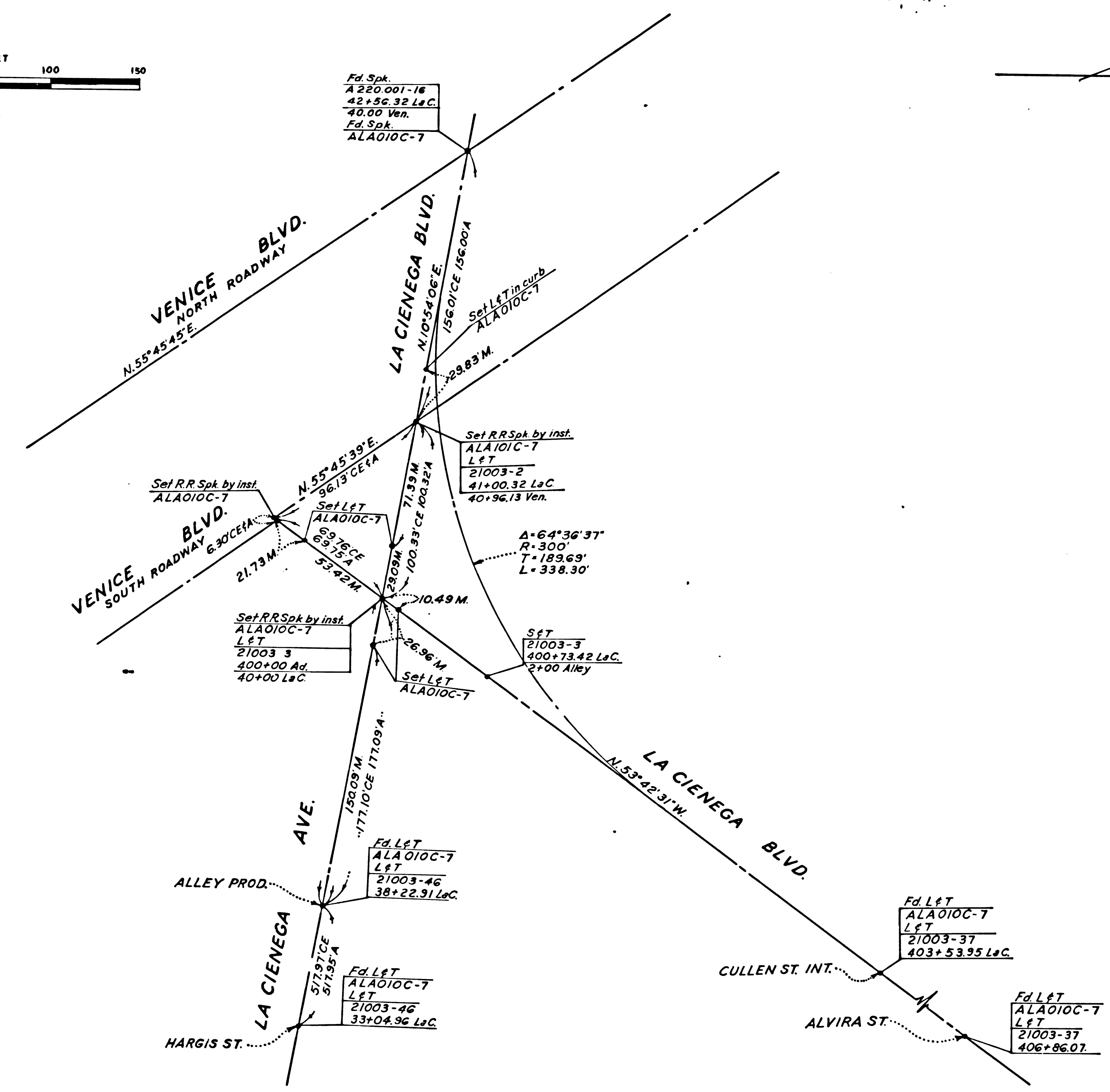
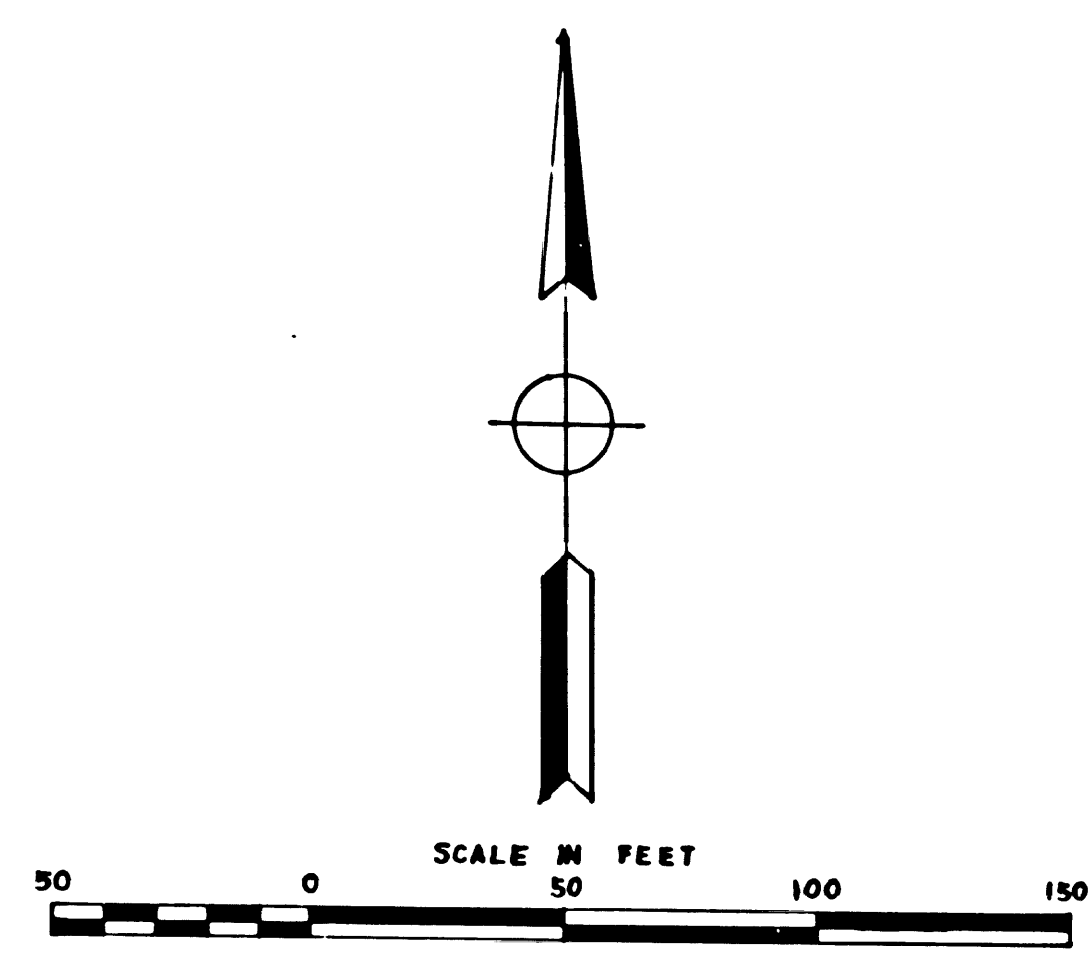
Item	R	Δ	T	L	Radius	Point	E
n	500	08° 53' 06"	38.85	77.54	125,957.51	174,706.88	
o	2000	49° 40' 00"	925.54	1733.69	123,662.00	173,300.17	
p	900	0° 51' 22"	6.72	13.45	124,846.32	173,445.57	
q	2000	03° 49' 02"	66.65	133.25	123,802.17	173,295.98	
r	2000	02° 40' 21"	46.65	93.29	127,678.96	174,805.07	
s	1907	56° 45' 05"	1030.06	1888.88	123,862.00	173,300.17	

DIST	COUNTY	RD/1E	POST MILES - TOTAL PROJECT	SHEET NO.	TOTAL SHEETS
7	LA	10	R 8.83 - M. 25	2	21

STATE OF CALIFORNIA
HIGHWAY TRANSPORTATION AGENCY
DEPARTMENT OF PUBLIC WORKS
DIVISION OF HIGHWAYS

MONUMENTATION MAP
No. MF-2072-2

Alvin
Deputy District Engineer



F.M. 20339 - SHT. 2 OF 4

F.M. 20339-2

CITY OF LOS ANGELES

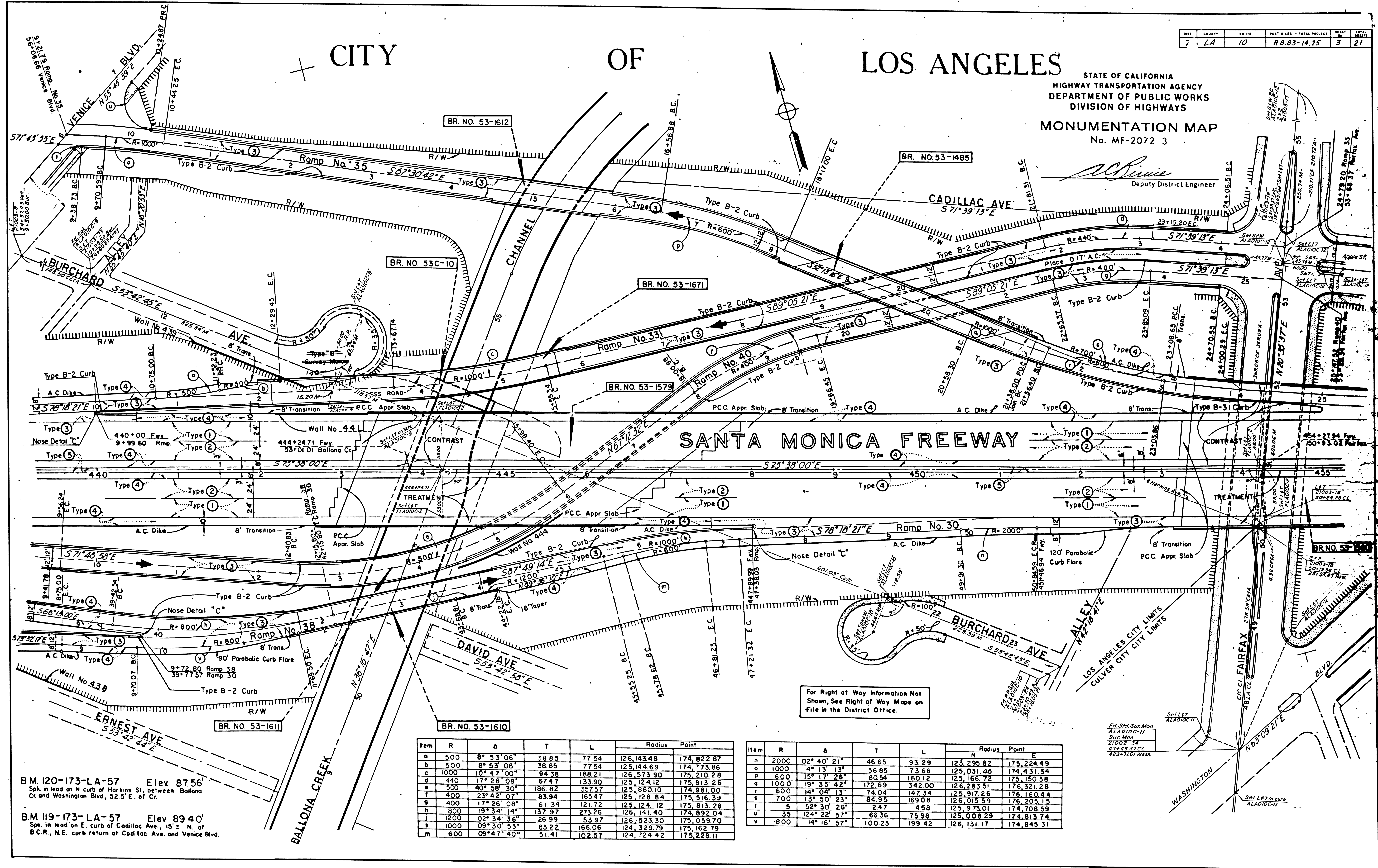
DIST.	COUNTY	ROUTE	POST MILES - TOTAL PROJECT	SHEET	TOTAL SHEETS
7	LA	10	R.B. 83-14.25	3	21

STATE OF CALIFORNIA
HIGHWAY TRANSPORTATION AGENCY
DEPARTMENT OF PUBLIC WORKS
DIVISION OF HIGHWAYS

MONUMENTATION MAP

No. MF-2072 3

W. J. DeWitt
Deputy District Engineer



For Right of Way Information Not Shown, See Right of Way Maps on File in the District Office.

BM. 120-173-LA-57 Elev. 87.56
Spk. in lead on N. curb of Harkins St. between Ballona Cr. and Washington Blvd., 52.5' E. of Cr.

BM. 119-173-LA-57 Elev. 89.40
Spk. in lead on E. curb of Cadillac Ave., 15' ± N. of B.C.R., N.E. curb return at Cadillac Ave. and Venice Blvd.

Item	R	Δ	T	L	Radius	Point
a	500	8° 53' 06"	38.85	77.54	126,143.48	174,822.87
b	500	8° 53' 06"	38.85	77.54	125,144.69	174,773.86
c	1000	10° 47' 00"	94.38	188.21	126,573.90	175,210.28
d	440	17° 26' 08"	67.47	133.90	125,124.12	175,813.28
e	500	40° 58' 30"	186.82	357.57	125,880.10	174,981.00
f	400	23° 42' 07"	83.94	165.47	125,128.84	175,516.33
g	400	17° 26' 08"	61.34	121.72	125,124.12	175,813.28
h	800	15° 34' 14"	137.57	273.26	126,141.40	174,892.04
i	1200	02° 34' 36"	26.99	53.97	126,523.30	175,059.70
j	1000	09° 30' 53"	83.22	166.06	124,329.79	175,162.79
k	600	09° 47' 40"	51.41	102.57	124,724.42	175,228.11

Item	R	Δ	T	L	Radius	Point
n	2000	02° 40' 21"	46.65	93.29	123,295.82	175,224.49
o	1000	4° 13' 13"	36.85	73.66	125,031.46	174,431.34
p	600	13° 13' 26"	80.54	160.12	125,166.72	175,150.38
q	1000	19° 35' 42"	172.69	342.00	126,293.51	176,321.28
r	600	14° 04' 13"	74.04	147.34	125,917.26	176,160.44
s	700	13° 50' 23"	84.95	169.08	126,015.59	176,205.15
t	5	52° 30' 26"	2.47	4.58	125,973.01	174,708.59
u	35	124° 22' 57"	66.36	75.98	125,008.29	174,813.74
v	800	14° 16' 57"	100.23	199.42	126,131.17	174,845.31

For Right Of Way Information Not
Shown, See Right Of Way Maps
On File In The District Office.

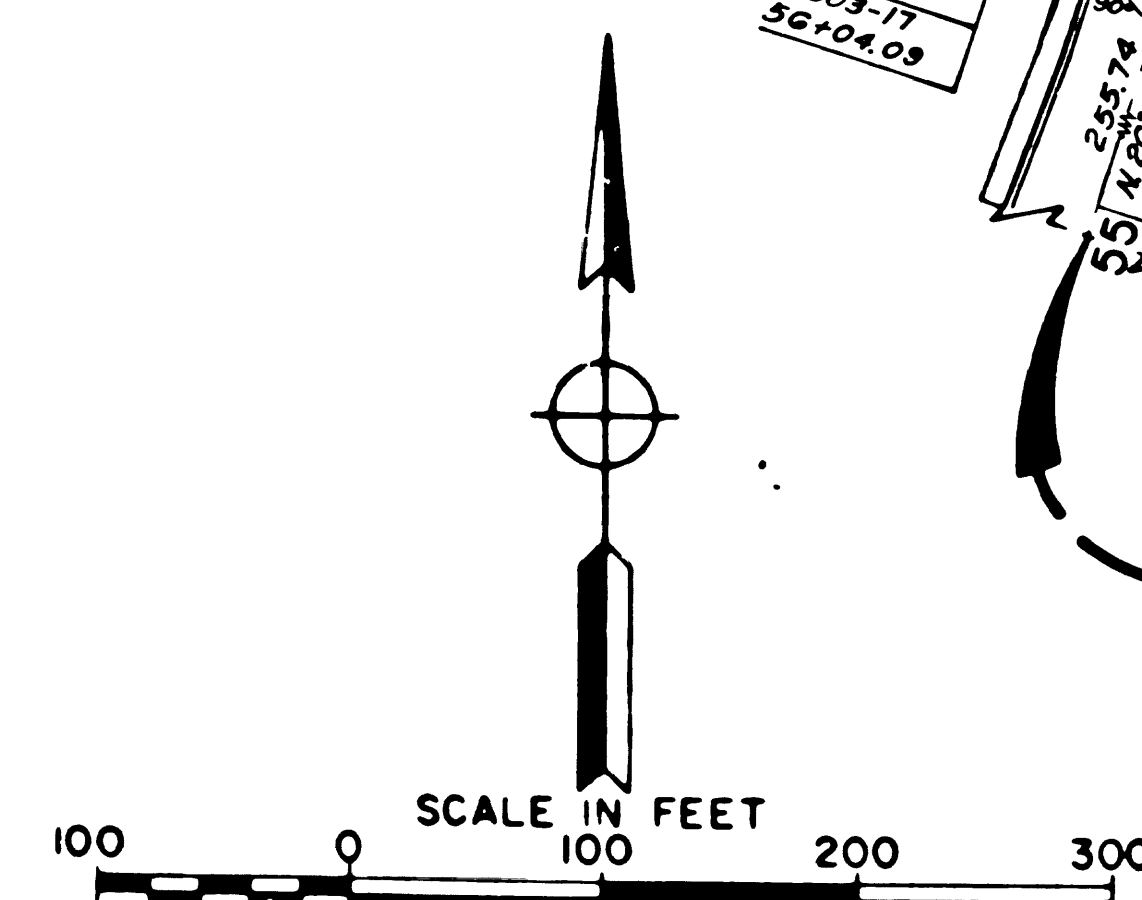
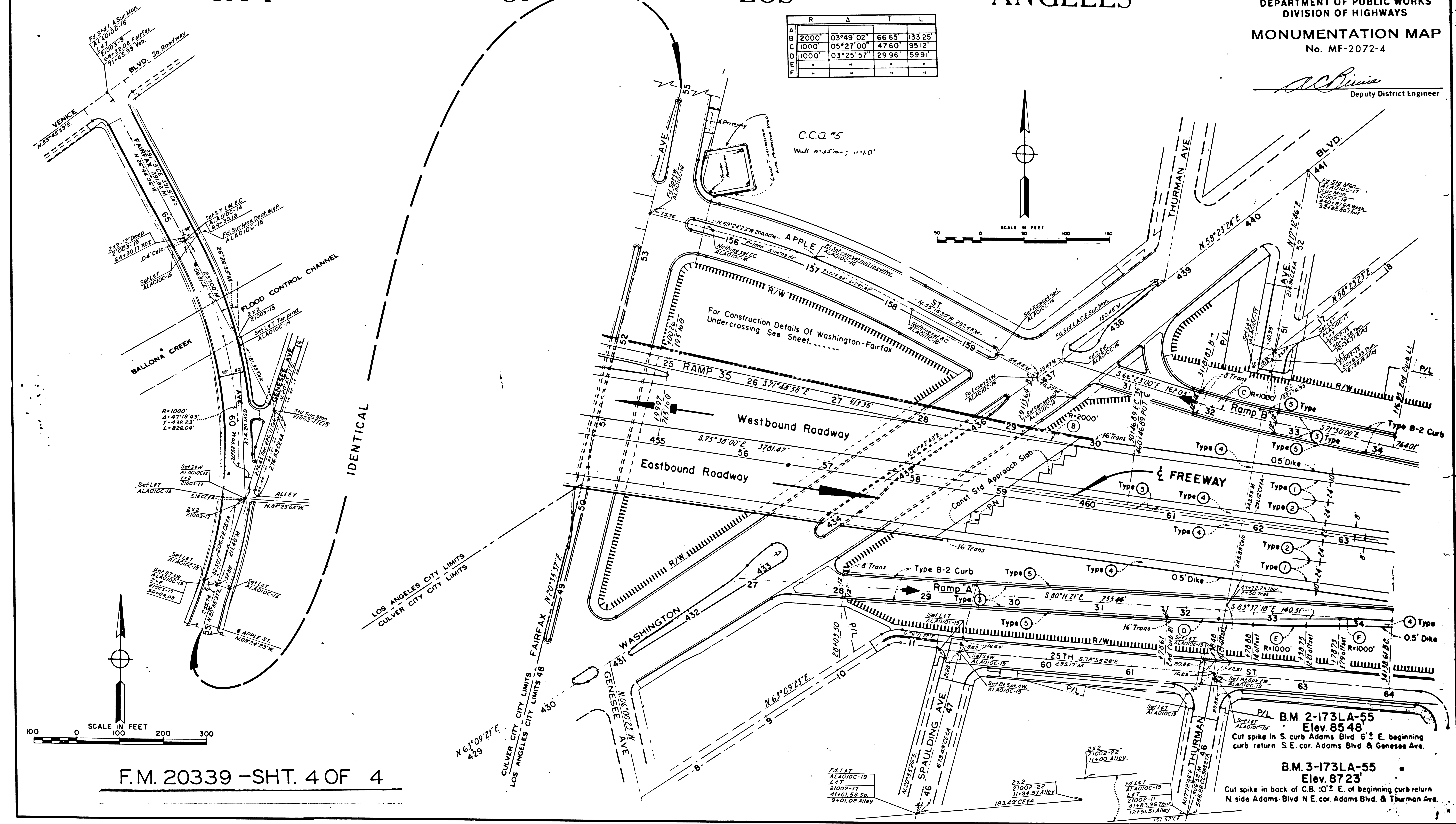
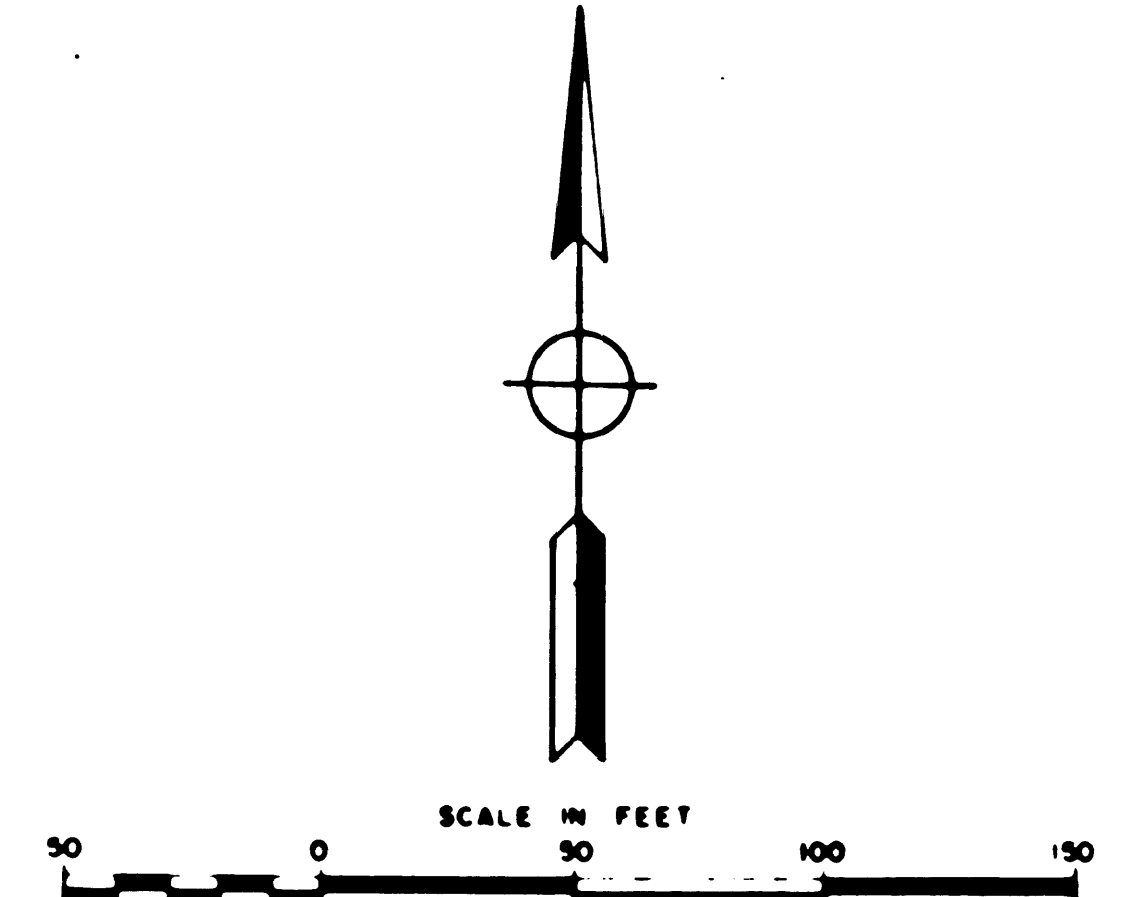
CITY OF LOS ANGELES

SHEET	COUNTY	ROUTE	POST MILES - TOTAL PROJECT	SHEET NO.	TOTAL SHEETS
7	LA	10	R. 8.83-14.25	4	27

STATE OF CALIFORNIA
HIGHWAY TRANSPORTATION AGENCY
DEPARTMENT OF PUBLIC WORKS
DIVISION OF HIGHWAYS
MONUMENTATION MAP
No. MF-2072-4

A.C. Bivins
Deputy District Engineer

	R	Δ	T	L
A	2000'	03°49'02"	66.65'	133.25'
B	1000'	05°27'00"	47.60'	95.12'
C	1000'	03°25'57"	29.96'	59.91'
D	"	"	"	"
E	"	"	"	"



F.M. 20339 - SHT. 4 OF 4

P.L. B.M. 2-173LA-55
Elev. 85.48
Cut spike in S. curb Adams Blvd. 6' ± E. beginning
curb return S.E. cor. Adams Blvd. & Genesee Ave.

B.M. 3-173LA-55
Elev. 87.23
Cut spike in back of C.B. 10' ± E. of beginning curb return
N. side Adams Blvd. N.E. cor. Adams Blvd. & Thurman Ave.

F.M. 20339-4