

DIST.	COUNTY	ROUTE	POST MILE - TOTAL PROJECT	SHEET NO.	TOTAL SHEETS
7	LA	10	R 8.83 - 14.25	5	21

STATE OF CALIFORNIA
HIGHWAY TRANSPORTATION AGENCY
DEPARTMENT OF PUBLIC WORKS
DIVISION OF HIGHWAYS
MONUMENTATION MAP
No. MF-2073-1

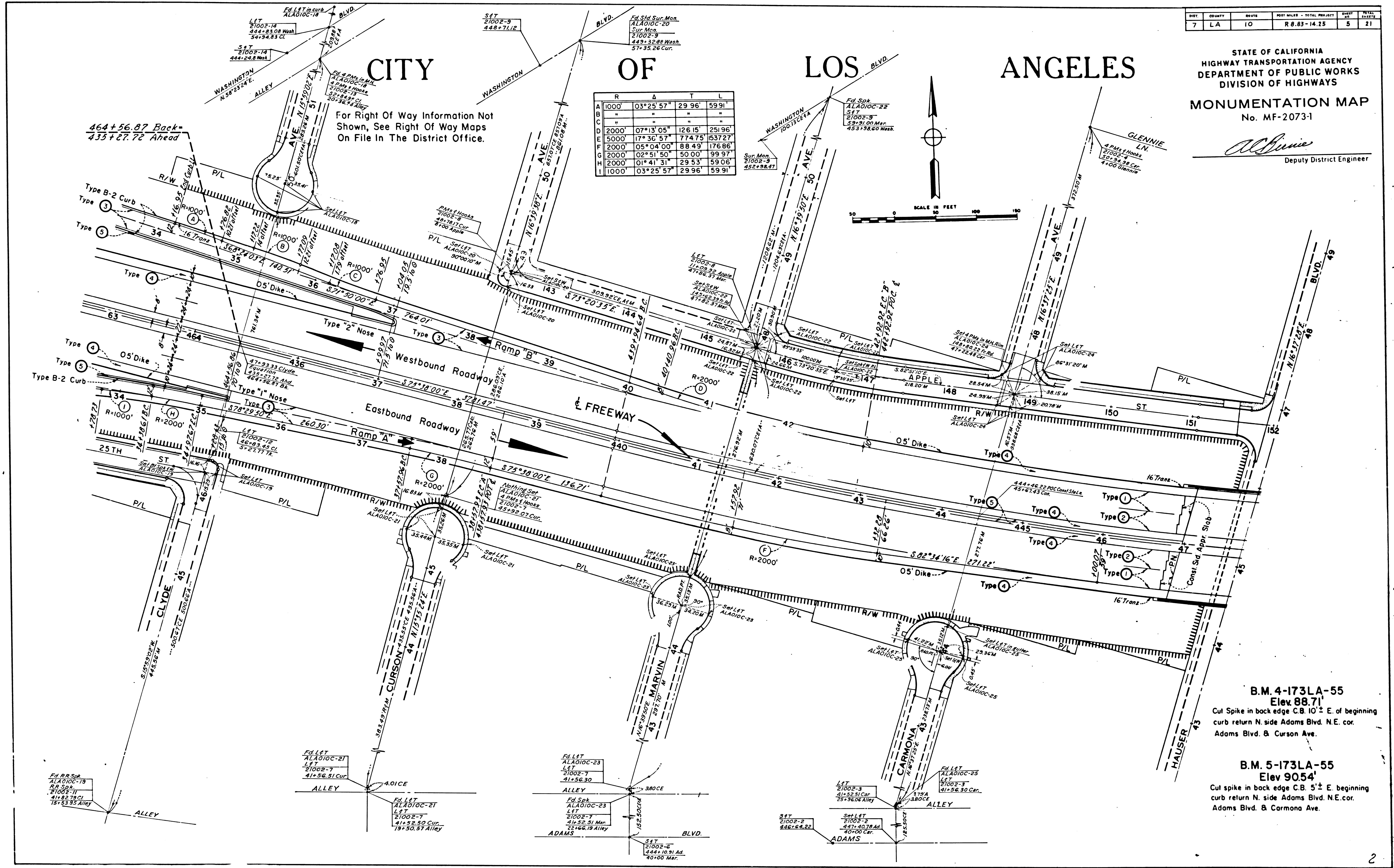
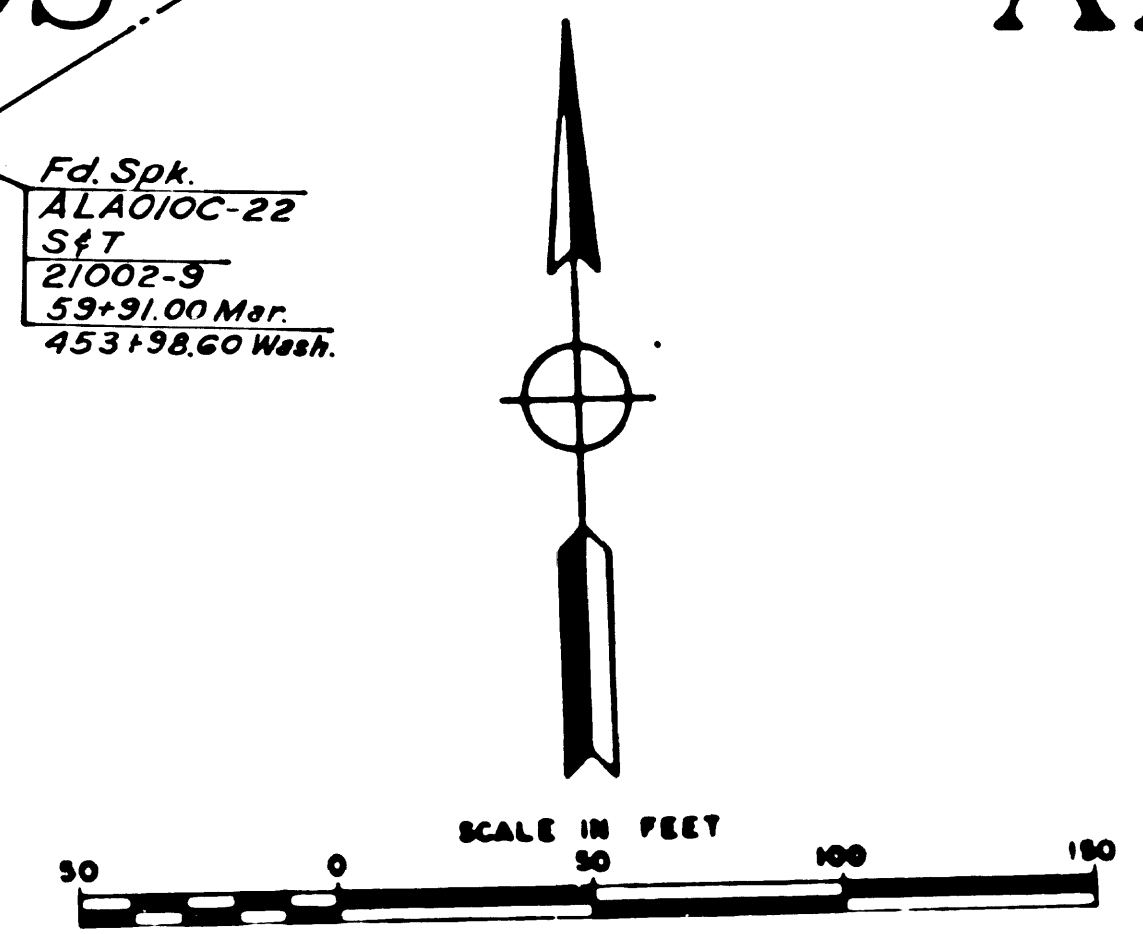
Al. Binnie
Deputy District Engineer

CITY OF LOS ANGELES

	R	Δ	T	L
A	1000'	03°25'57"	29.96'	59.91'
B	"	"	"	"
C	"	"	"	"
D	2000'	07°13'05"	126.15'	251.96'
E	5000'	17°36'57"	774.75'	1547.27'
F	2000'	05°04'00"	88.49'	176.98'
G	2000'	02°51'50"	50.00'	99.97'
H	2000'	01°41'31"	29.53'	59.06'
I	1000'	03°25'57"	29.96'	59.91'

For Right of Way Information Not Shown, See Right Of Way Maps On File In The District Office.

464+56.87 Back-
433+27.72 Ahead



B.M. 4-173LA-55
Elev 88.71'
Cut Spike in back edge C.B. 10'± E. of beginning curb return N. side Adams Blvd. N.E. cor. Adams Blvd. & Curson Ave.

B.M. 5-173LA-55
Elev 90.54'
Cut spike in back edge C.B. 5'± E. beginning curb return N. side Adams Blvd. N.E. cor. Adams Blvd. & Carmona Ave.

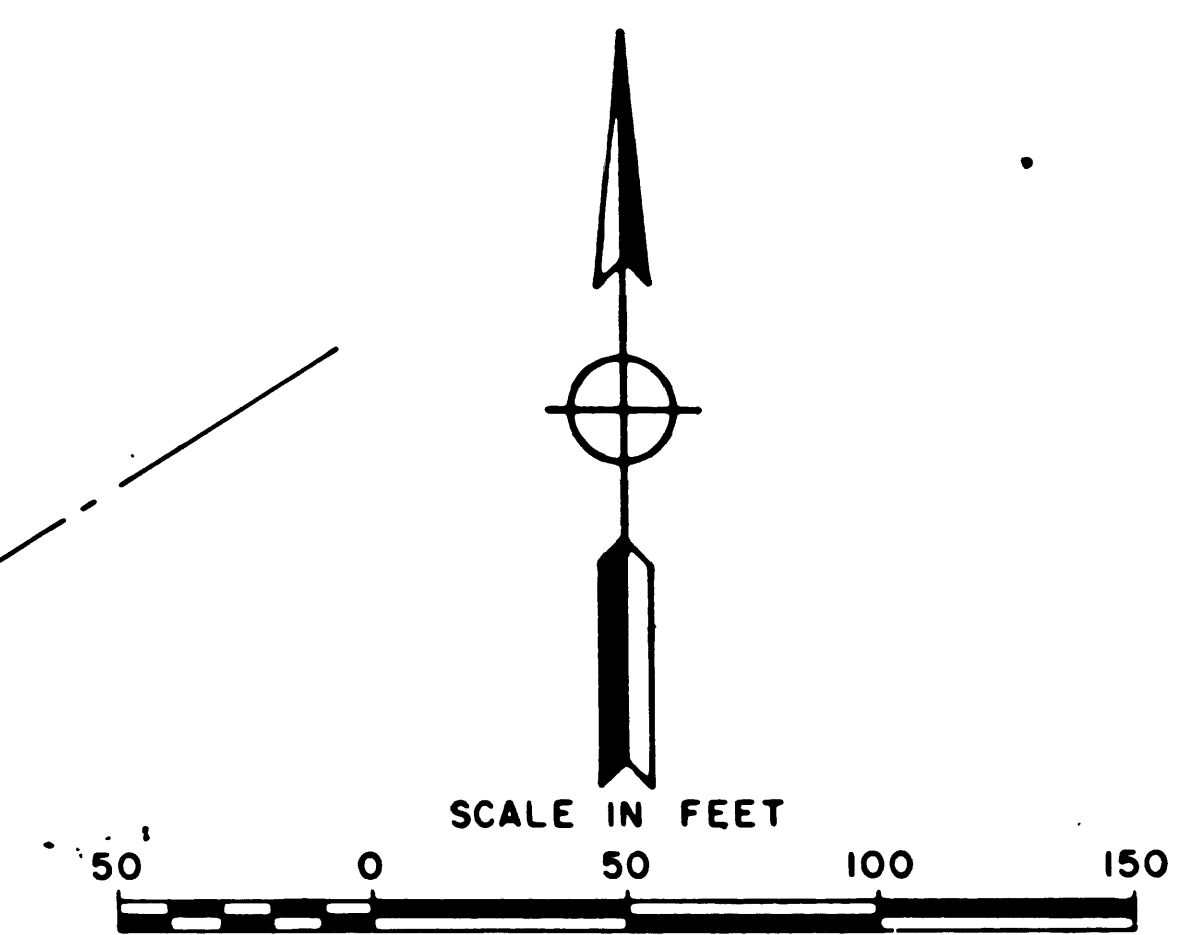
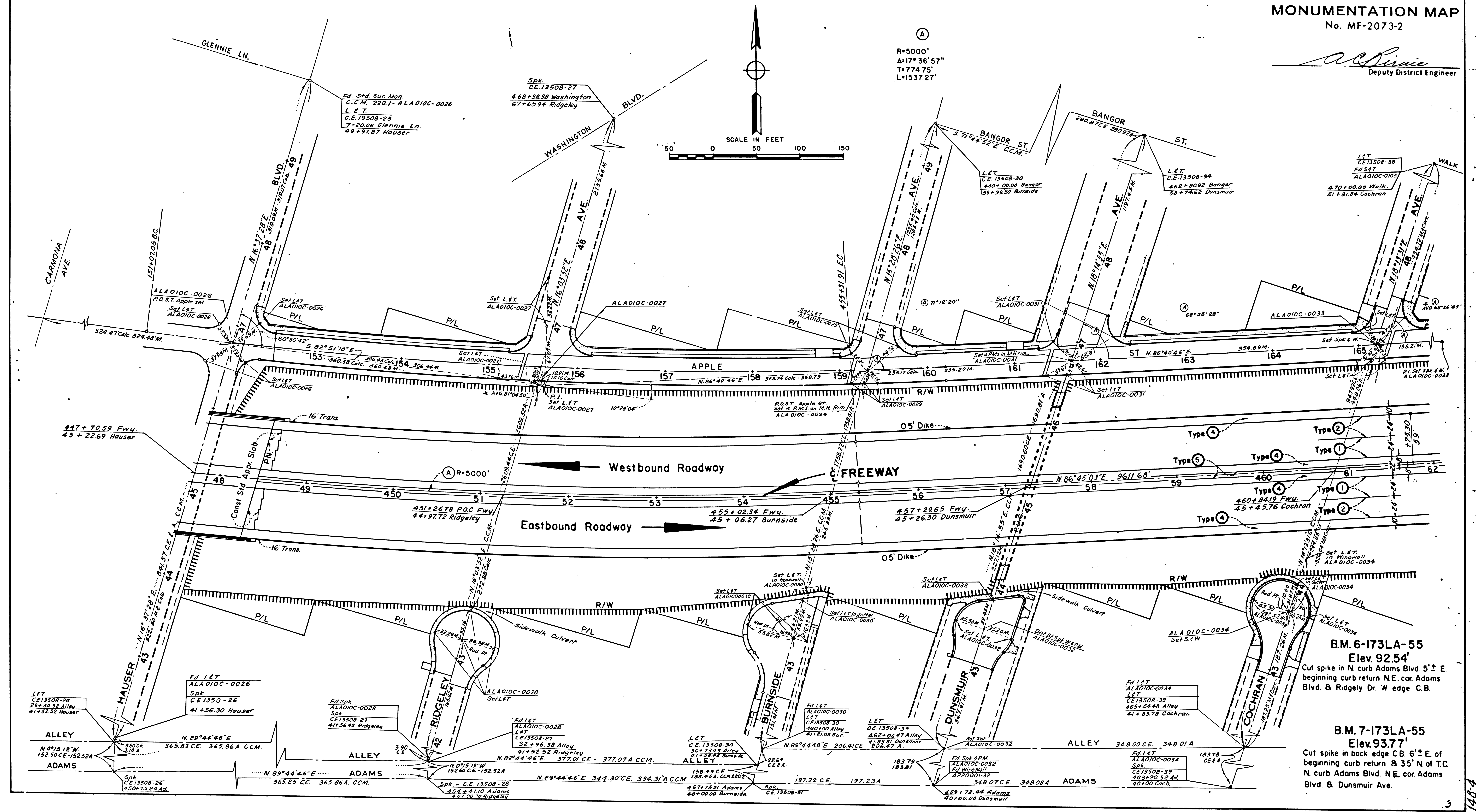
POST MILES - TOTAL PROJECT	DATE	NO.
7 LA 10	R 8.83-14.25	6 21

For Right Of Way Information Not Shown, See Right Of Way Maps On File In The District Office.

CITY OF LOS ANGELES

STATE OF CALIFORNIA
HIGHWAY TRANSPORTATION AGENCY
DEPARTMENT OF PUBLIC WORKS
DIVISION OF HIGHWAYS
MONUMENTATION MAP
No. MF-2073-2

A. D. Smith
Deputy District Engineer



Ⓐ
R=5000'
Δ=174°36'57"
T=774.75'
L=1537.27'

B.M. 6-173LA-55
Elev. 92.54'
Cut spike in N. curb Adams Blvd 5' ± E. beginning curb return N.E. cor Adams Blvd & Ridgely Dr. W. edge C.B.

B.M. 7-173LA-55
Elev. 93.77'
Cut spike in back edge CB 6' ± E. of beginning curb return & 35' N of TC N. curb Adams Blvd. N.E. cor Adams Blvd. & Dunsmuir Ave.

148-4

STATE OF CALIFORNIA
HIGHWAY TRANSPORTATION AGENCY
DEPARTMENT OF PUBLIC WORKS
DIVISION OF HIGHWAYS
MONUMENTATION MAP
No. MF-2073-3

A. D. Dineen
Deputy District Engineer

For Right Of Way Information Not Shown, See Right Of Way Maps On File In The District Office

CITY OF LOS ANGELES

R	Δ	T	L	
A	1000	02°13'50"	19.47	38.93
B	2000	02°13'50"	38.94	77.86
C	2000	03°38'12"	63.49	126.94
D	3000	02°51'50"	50.00	99.37
E	3000	03°38'12"	95.24	190.42
F	2000	05°43'00"	99.86	199.55
G	5000	02°51'50"	124.99	249.92

