

For Right Of Way Information Not Shown See Right Of Way Maps On File In The District Office.

CITY OF LOS ANGELES

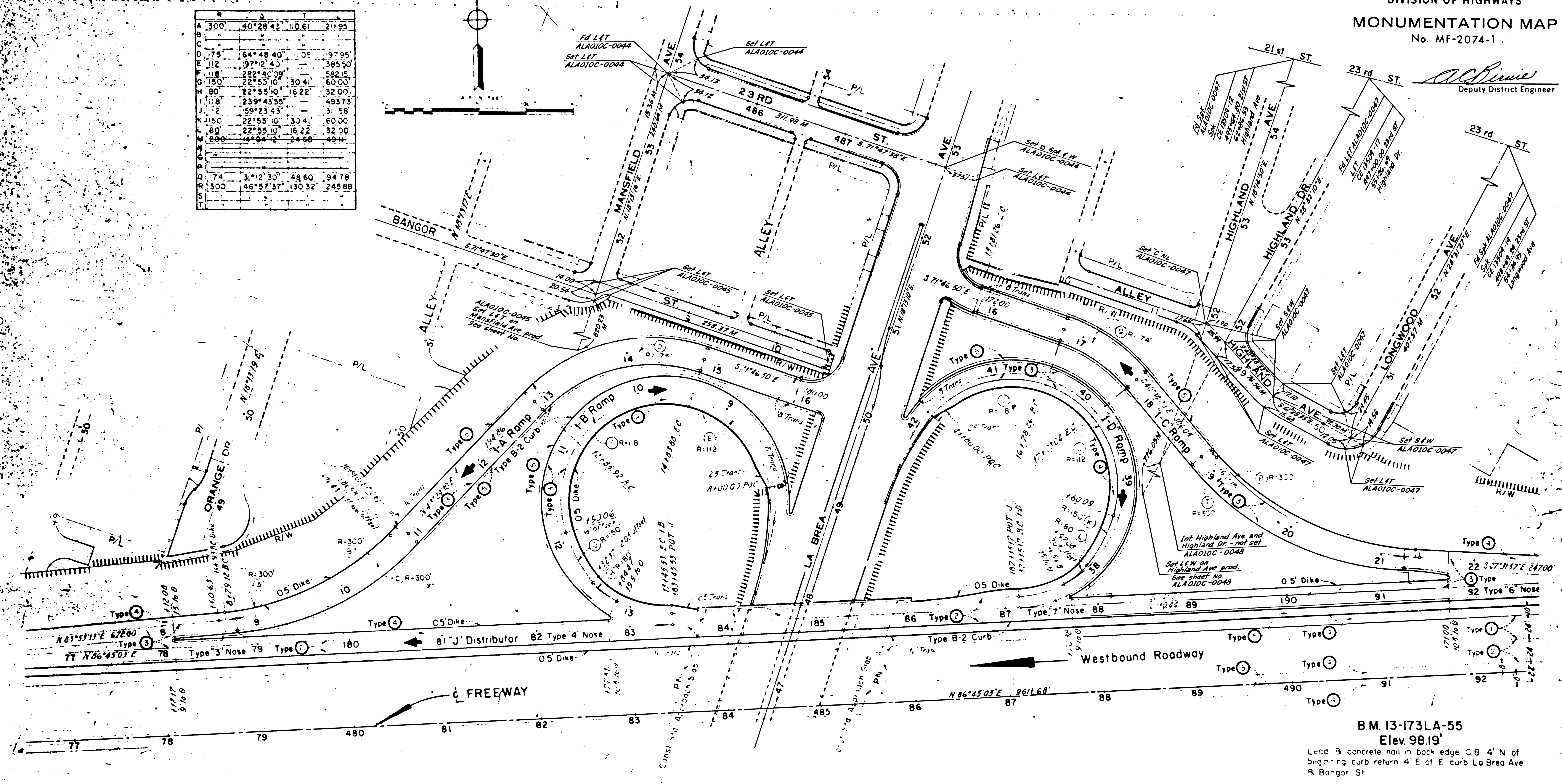
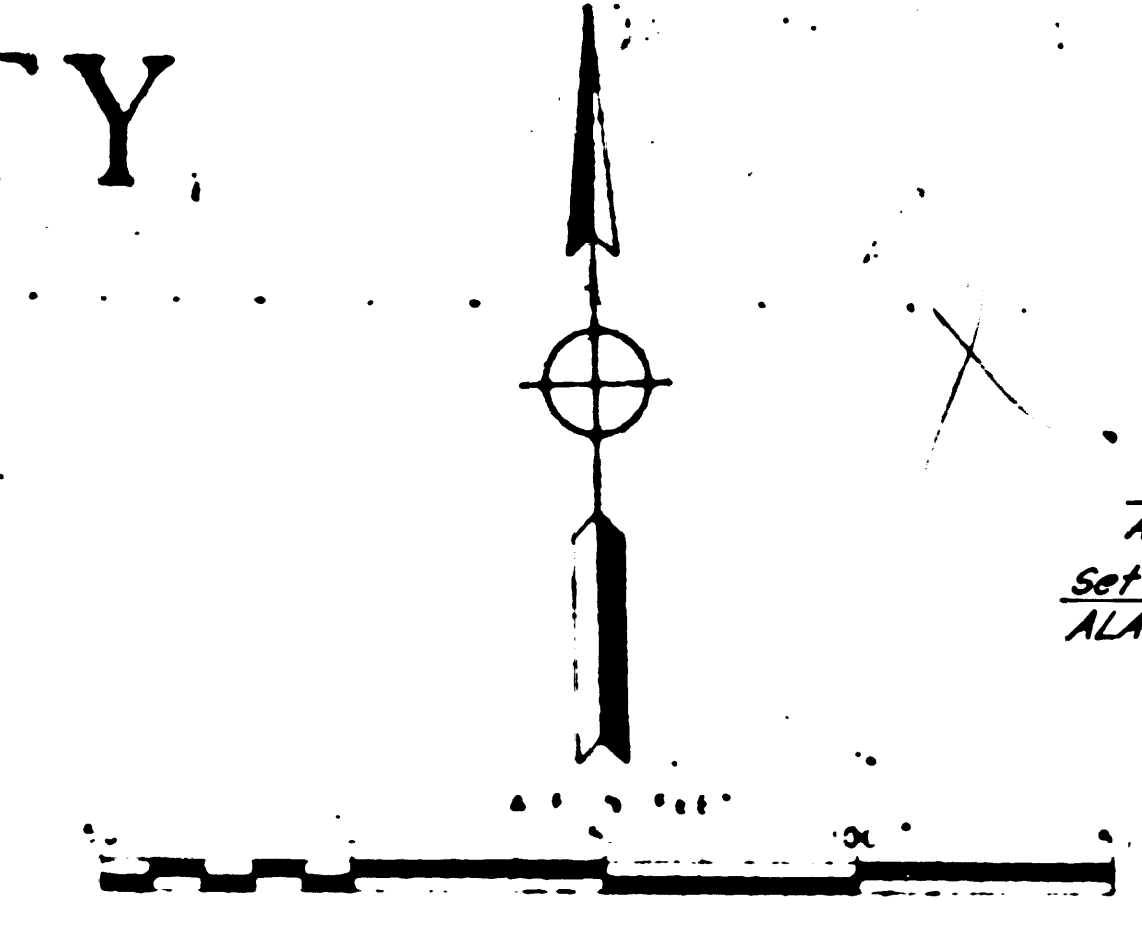
SHEET	TOTAL SHEETS	ROUTE	POST MILES - TOTAL PROJECT
7	8	LA 10	R 8.83-14.25

STATE OF CALIFORNIA
HIGHWAY TRANSPORTATION AGENCY
DEPARTMENT OF PUBLIC WORKS
DIVISION OF HIGHWAYS

MONUMENTATION MAP
No. MF-2074-1

Al Dennis
Deputy District Engineer

LINE	BEARING	DISTANCE	AREA
A	300	40°28'42"	10.61
B	175	64°48'40"	08
C	112	97°12'40"	385.50
D	118	282°40'09"	582.15
E	150	22°55'10"	30.41
F	80	22°55'10"	16.22
G	118	239°43'55"	493.73
H	72	199°23'43"	31.58
I	150	22°55'10"	30.41
J	80	22°55'10"	16.22
K	80	14°04'12"	24.68
L	300	46°57'37"	130.32
M	74	31°12'30"	48.60
N	300	46°57'37"	130.32
O	74	31°12'30"	48.60
P	300	46°57'37"	130.32
Q	74	31°12'30"	48.60
R	300	46°57'37"	130.32
S	74	31°12'30"	48.60
T	300	46°57'37"	130.32



B.M. 13-173LA-55
Elev. 98.19'
Lead B concrete nail in back edge CB 4' N of beginning curb return 4' E of E curb La Brea Ave & Bangor St

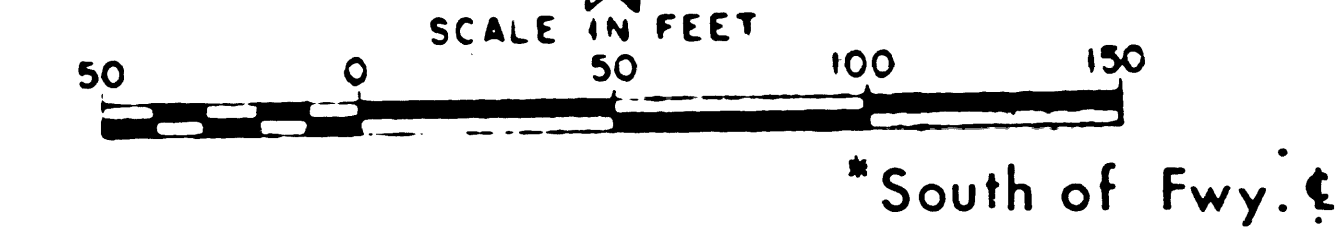
For Right Of Way Information Not Shown, See Right Of Way Maps On File in The District Office.

CITY OF LOS ANGELES

SHEET	COUNTY	ROUTE	POST MILES - TOTAL PROJECT	SHEET NO.	TOTAL SHEETS
7	LA	10	R.B. 83-14.25	9	21

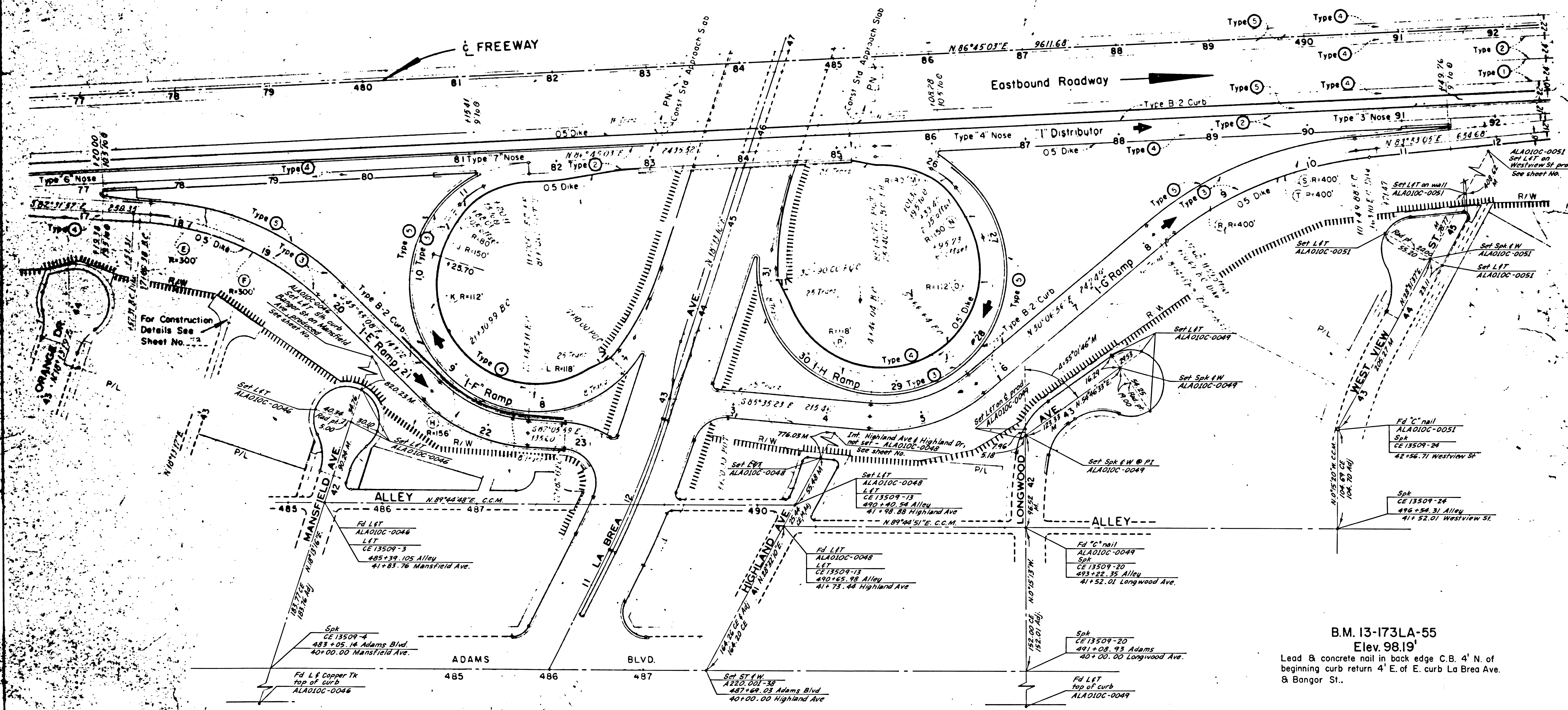
STATE OF CALIFORNIA
HIGHWAY TRANSPORTATION AGENCY
DEPARTMENT OF PUBLIC WORKS
DIVISION OF HIGHWAYS
MONUMENTATION MAP
No. MF-2074-2

Deputy District Engineer
Deputy District Engineer



South of Fwy. 5

STATION	ANGLE	LENGTH	COORDINATES
A	120°00'	144.04	124.66 49.11
B			
C			
D			
E	300°	41°56'49"	114.00 217.89
F			
G			
H	156°	41°10'51"	58.61 112.12
I	80°	22°55'10"	16.22 32.00
J	150°	22°55'10"	30.41 60.00
K	112°	159°23'43"	311.56
L	18°	239°43'55"	493.73
M	80°	22°55'10"	16.22 32.00
N	150°	22°55'10"	30.41 60.00
O	2°	97°2'40"	385.50
P	118°	282°40'09"	582.15
Q	156°	44°17'41"	62.50 120.60
R	400°	33°46'09"	121.41 235.75
S			
T			



B.M. 13-173LA-55
Elev. 98.19'
Lead & concrete nail in back edge C.B. 4' N. of beginning curb return 4' E. of E. curb La Brea Ave. & Bangor St.

CITY OF LOS ANGELES

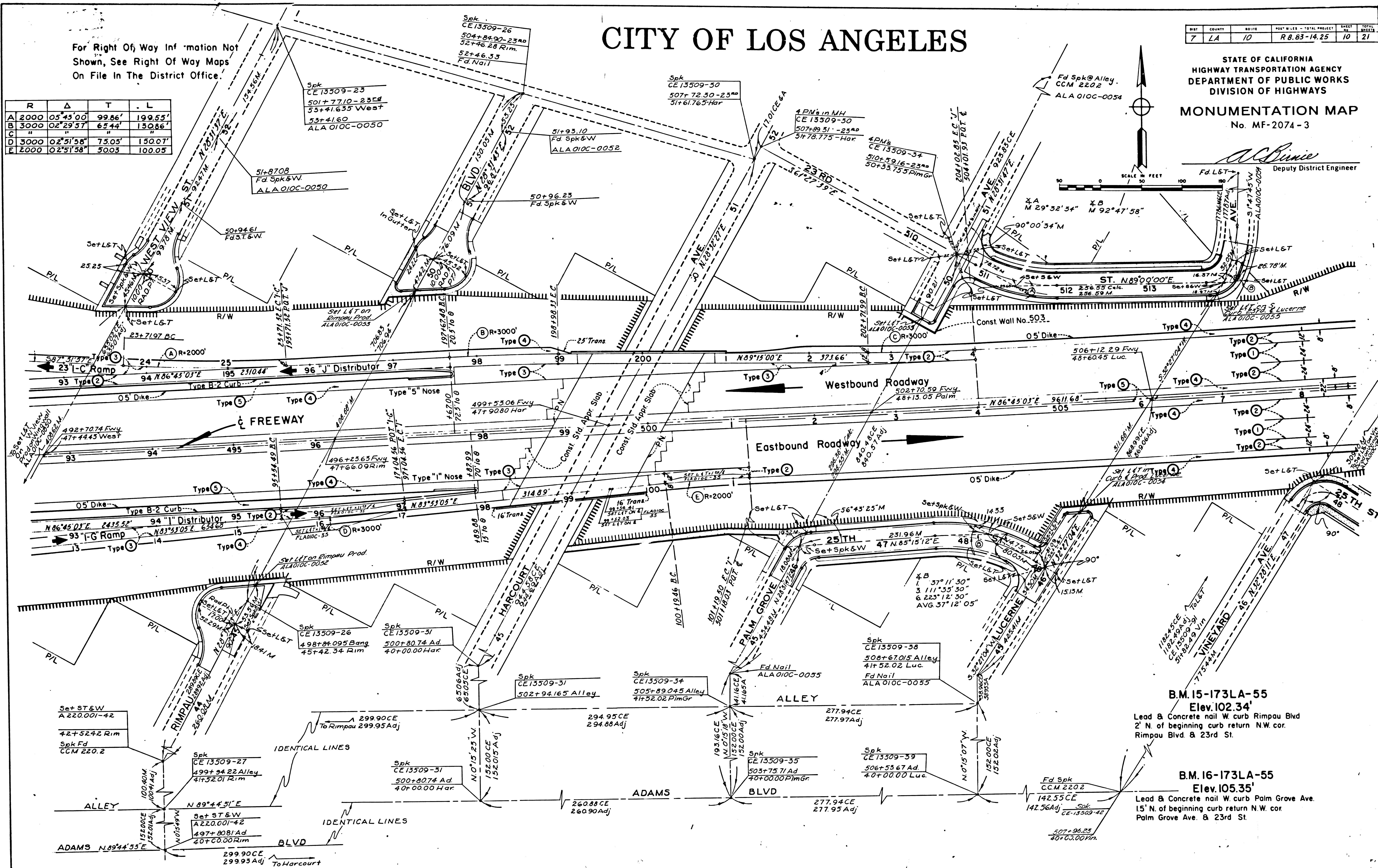
DIST	COUNTY	ROUTE	POST MILES - TOTAL PROJECT	SHEET NO.	TOTAL SHEETS
7	LA	10	R. 8.83-14.25	10	21

STATE OF CALIFORNIA
HIGHWAY TRANSPORTATION AGENCY
DEPARTMENT OF PUBLIC WORKS
DIVISION OF HIGHWAYS
MONUMENTATION MAP
No. MF-2074-3

A. C. Binie
Deputy District Engineer

For Right Of Way Information Not
Shown, See Right Of Way Maps
On File In The District Office.

R	Δ	T	L
A	2000	05°45'00"	99.86'
B	3000	02°29'57"	65.44'
C	"	"	"
D	3000	02°51'58"	75.05'
E	2000	02°51'58"	50.03'

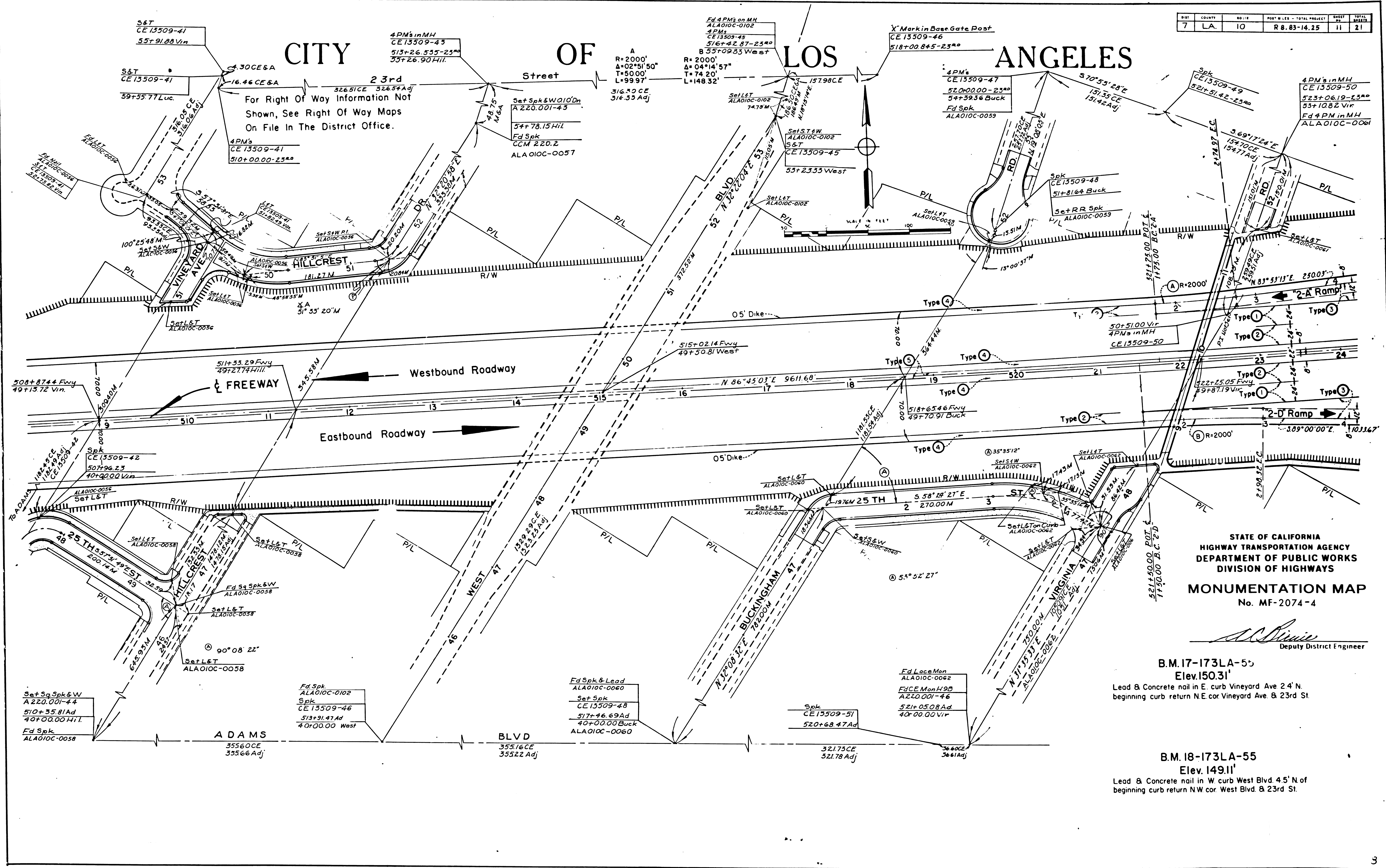


B.M. 15-173LA-55
Elev. 102.34'
Lead & Concrete nail W curb Rimpau Blvd
2' N. of beginning curb return N.W. cor.
Rimpau Blvd & 23rd St.

B.M. 16-173LA-55
Elev. 105.35'
Lead & Concrete nail W curb Palm Grove Ave.
15' N. of beginning curb return N.W. cor.
Palm Grove Ave. & 23rd St.

NO.	COUNTY	NO. IN	POST-MILE - TOTAL PROJECT	SHEET NO.	TOTAL SHEETS
7	LA.	10	R. 8.83-14.25	11	21

CITY OF LOS ANGELES



For Right Of Way Information Not Shown, See Right Of Way Maps On File In The District Office.

STATE OF CALIFORNIA
HIGHWAY TRANSPORTATION AGENCY
DEPARTMENT OF PUBLIC WORKS
DIVISION OF HIGHWAYS
MONUMENTATION MAP
No. MF-2074-4

A. C. Smith
Deputy District Engineer

B.M. 17-173LA-55
Elev. 150.31'
Lead & Concrete nail in E. curb Vineyard Ave 2.4' N.
beginning curb return N.E. cor. Vineyard Ave. & 23rd St.

B.M. 18-173LA-55
Elev. 149.11'
Lead & Concrete nail in W. curb West Blvd. 4.5' N. of
beginning curb return N.W. cor. West Blvd. & 23rd St.

Set Sq Spk & W
A 220.001-44
510+35.81 Ad
40+00.00 H.I.L.
Ed Spk
ALA010C-0058

Fd Spk
ALA010C-0102
Spk
CE 13509-46
513+91.47 Ad
40+00.00 West

Fd Spk & Lead
ALA010C-0060
Set Spk
CE 13509-48
517+46.69 Ad
40+00.00 Buck
ALA010C-0060

Spk
CE 13509-51
520+68.47 Ad

Fd Loca Mon
ALA010C-0062
FRCE Mon H 90
A 220.001-46
521+05.08 Ad
40+00.00 Vir

1284

For Right Of Way Information Not Shown, See Right Of Way Maps On File In The District Office.

CITY

OF LOS ANGELES

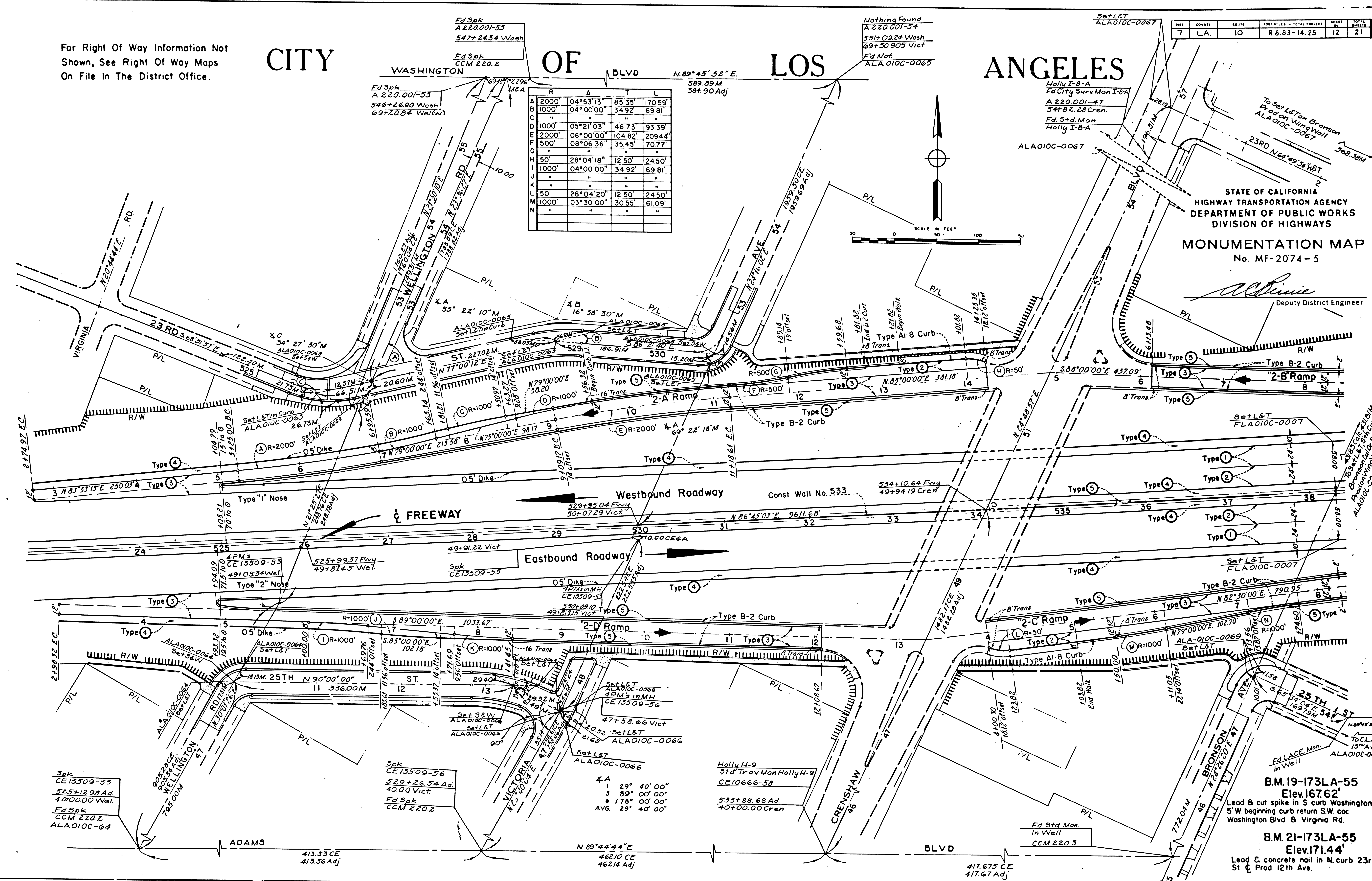
ANGELES

SHEET	COUNTY	ROUTE	POST MILES - TOTAL PROJECT	SHEET	TOTAL SHEETS
7	LA	10	R.8.83-14.25	12	21

LINE	BEARING	DISTANCE	AREA	PERIMETER
A	04°53'13"	85.35	170.59'	
B	04°00'00"	34.92	69.81'	
C	05°21'03"	46.73	93.39'	
D	06°00'00"	104.82	209.44'	
E	08°06'36"	35.45	70.77'	
F	28°04'18"	12.50	24.50'	
G	04°00'00"	34.92	69.81'	
H	04°00'00"	34.92	69.81'	
I	28°04'20"	12.50	24.50'	
J	03°30'00"	30.55	61.09'	
K				
L				
M				
N				

STATE OF CALIFORNIA
HIGHWAY TRANSPORTATION AGENCY
DEPARTMENT OF PUBLIC WORKS
DIVISION OF HIGHWAYS
MONUMENTATION MAP
No. MF-2074-5

Alvin
Deputy District Engineer



Spk
CE13509-53
525+12.98 Ad
40'00'00' Wel

Spk
CE13509-56
529+26.54 Ad
40'00'00' Vict

Set L&T
ALA010C-0066
4A
1 29° 40' 00"
5 89° 00' 00"
6 178° 00' 00"
AVG. 29° 40' 00"

Holly H-9
Std Trav Mon Holly H-9
CE10666-58
533+88.68 Ad
40'00'00' Cren

Fd Std Mon
In Well
CCM 220.3
417.675 CE
417.67 Adj

B.M. 19-173LA-55
Elev. 167.62'
Lead B cut spike in S curb Washington Bl
5' W beginning curb return SW cor
Washington Blvd. & Virginia Rd

B.M. 21-173LA-55
Elev. 171.44'
Lead C concrete nail in N curb 23rd
St. & Prod. 12th Ave.