

For Right Of Way Information Not Shown, See Right Of Way Maps On File In The District Office.

CITY OF LOS ANGELES

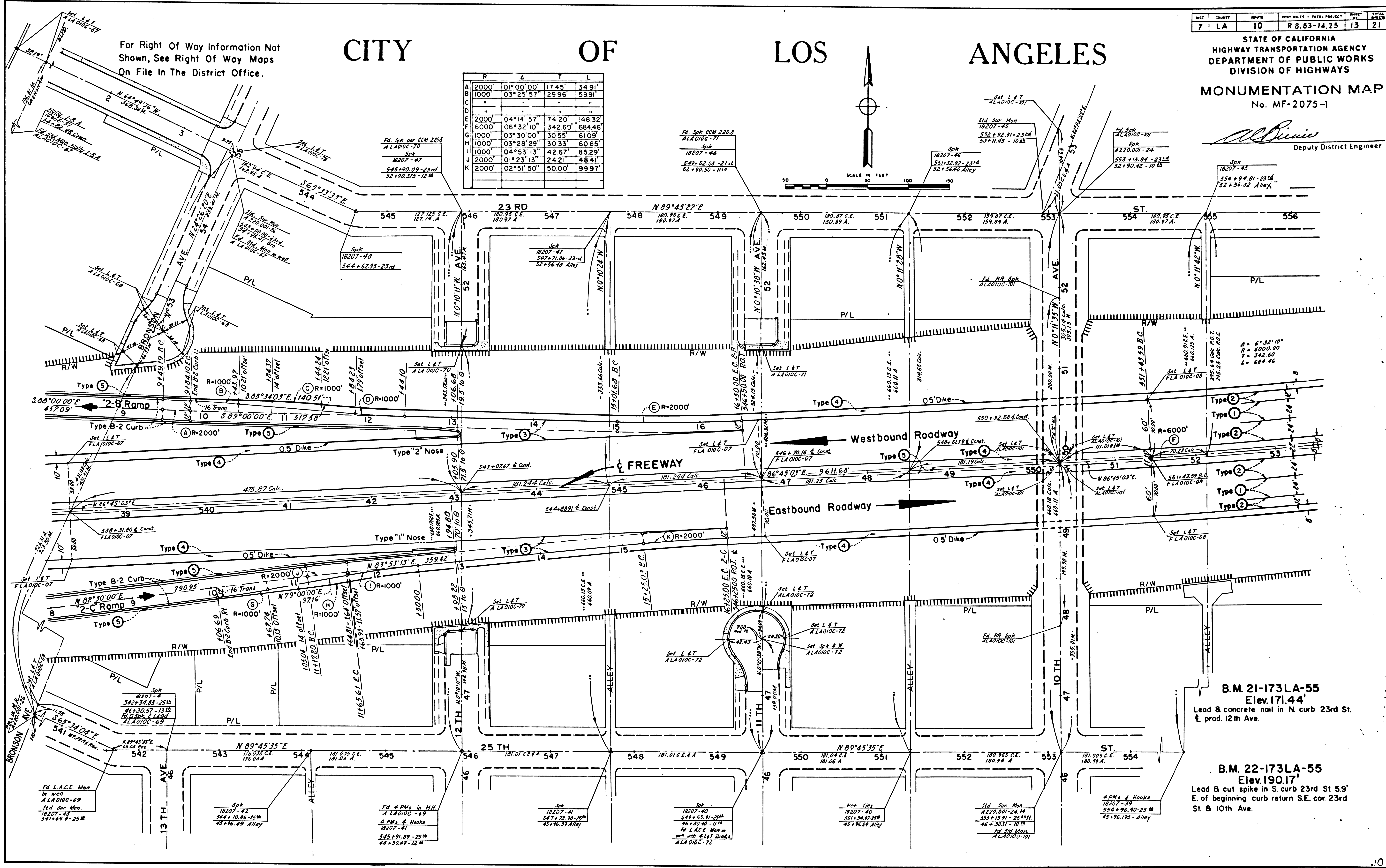
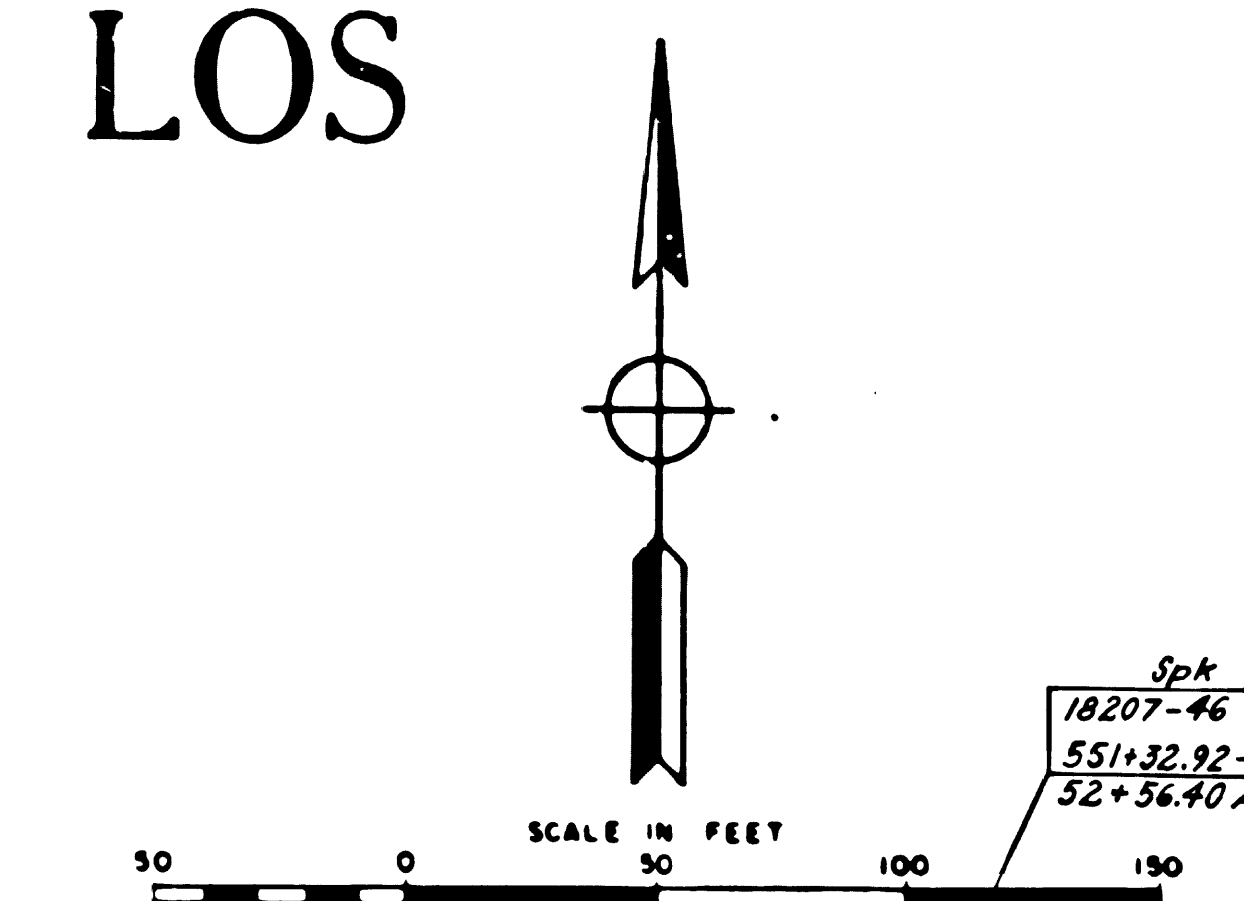
SHEET	QUANTITY	ROUTE	POST MILES - TOTAL PROJECT	SHEET NO.	TOTAL SHEETS
7	LA	10	R 8.83-14.25	13	21

STATE OF CALIFORNIA
HIGHWAY TRANSPORTATION AGENCY
DEPARTMENT OF PUBLIC WORKS
DIVISION OF HIGHWAYS

MONUMENTATION MAP
No. MF-2075-1

W. Dennis
Deputy District Engineer

	R	Δ	T	L
A	2000	01°00'00"	1745'	3491'
B	1000	03°25'57"	2996'	5991'
C	"	"	"	"
D	2000	04°14'57"	7420'	14832'
E	6000	06°32'10"	34260'	68446'
F	1000	03°30'00"	3055'	6109'
G	1000	03°28'29"	3033'	6065'
H	1000	04°53'13"	4267'	8529'
I	2000	01°23'13"	2421'	4841'
J	2000	02°51'50"	5000'	9997'



B.M. 21-173LA-55
Elev. 171.44'
Lead & concrete nail in N curb 23rd St.
E. prod. 12th Ave.

B.M. 22-173LA-55
Elev. 190.17'
Lead & cut spike in S curb 23rd St 5.9'
E. of beginning curb return SE. cor. 23rd
St. & 10th Ave.

1484

7	LA	10	R.8.83-14.25	14	21
---	----	----	--------------	----	----

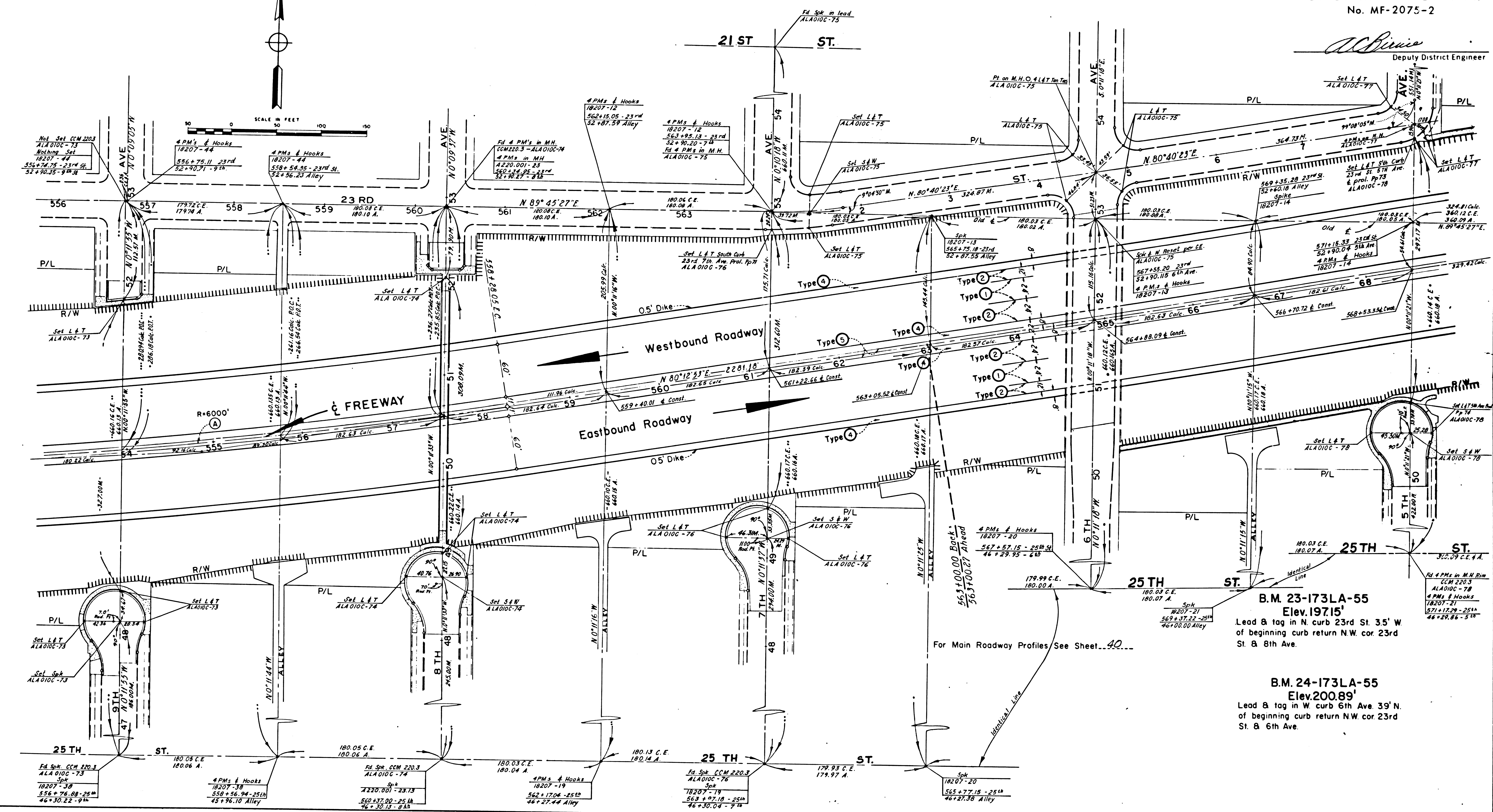
For Right Of Way Information Not Shown, See Right Of Way Maps On File in The District Office.

CITY OF LOS ANGELES

A
R=6000'
Δ=06°32'10"
T=342.60'
L=684.46'

STATE OF CALIFORNIA
HIGHWAY TRANSPORTATION AGENCY
DEPARTMENT OF PUBLIC WORKS
DIVISION OF HIGHWAYS
MONUMENTATION MAP
No. MF-2075-2

W. Binie
Deputy District Engineer



B.M. 23-173LA-55
Elev. 197.15'
Lead & tag in N. curb 23rd St. 35' W
of beginning curb return N.W. cor. 23rd
St. & 8th Ave.

B.M. 24-173LA-55
Elev. 200.89'
Lead & tag in W. curb 6th Ave. 39' N.
of beginning curb return N.W. cor. 23rd
St. & 6th Ave.

For Main Roadway Profiles See Sheet...40...

CITY OF LOS ANGELES

For Right Of Way Information Not Shown, See Right Of Way Maps On File In The District Office.

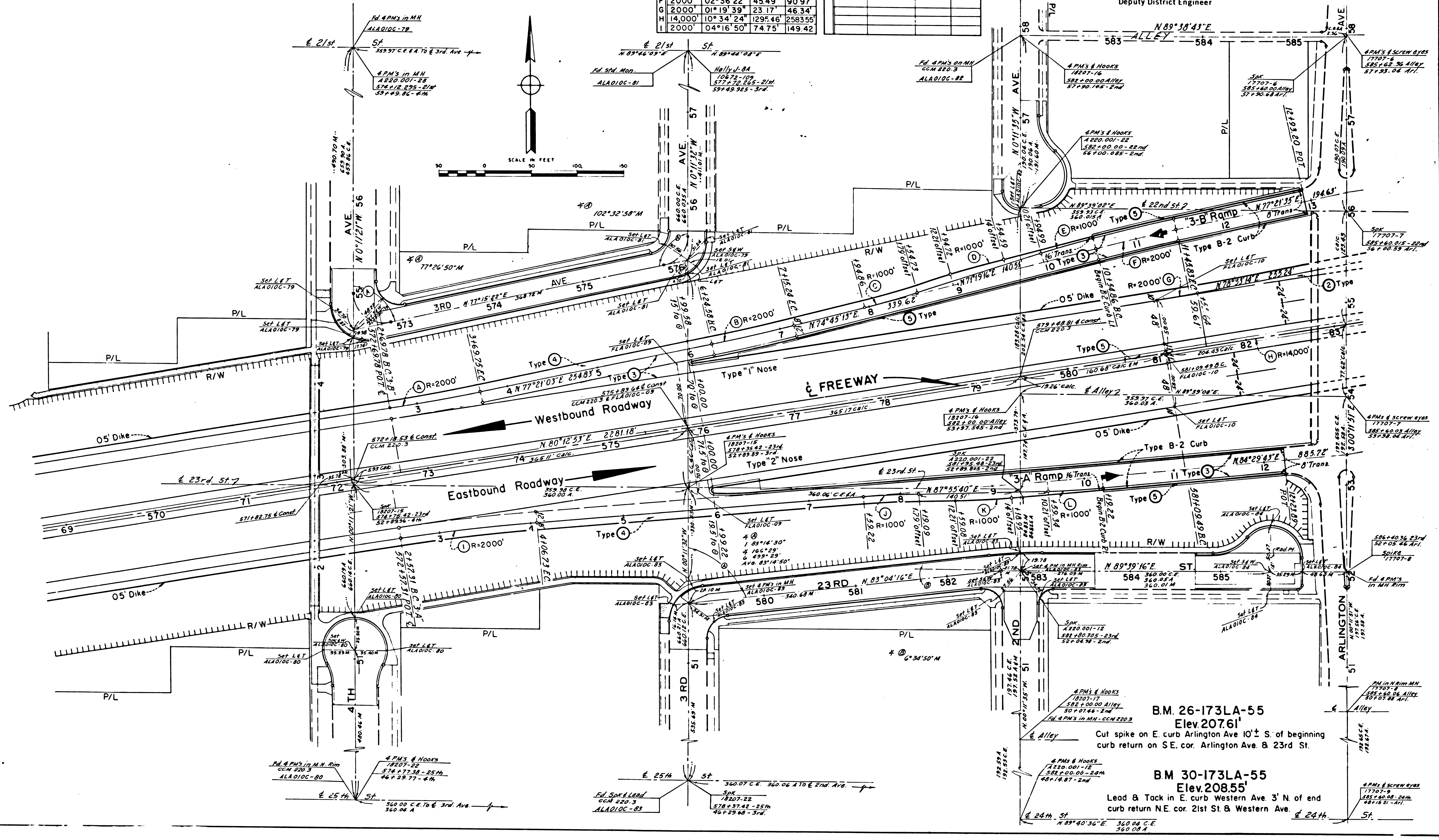
STATE OF CALIFORNIA
HIGHWAY TRANSPORTATION AGENCY
DEPARTMENT OF PUBLIC WORKS
DIVISION OF HIGHWAYS

NO.	COUNTY	ROUTE	PART MILES - TOTAL PROJECT	SHEET NO.	TOTAL SHEETS
7	LA	IO	R. 8.83-14.25	15	21

MONUMENTATION MAP
No. MF-2075-3

	R	Δ	T	L
A	2000'	02°51'50"	50.00'	99.97'
B	2000'	02°35'50"	45.34'	90.66'
C	1000'	03°25'57"	29.96'	59.91'
D	"	"	"	"
E	"	"	"	"
F	2000'	02°36'22"	45.49'	90.97'
G	2000'	01°19'39"	23.17'	46.34'
H	14,000'	10°34'24"	1295.46'	2583.55'
I	2000'	04°16'50"	74.75'	149.42'

	R	Δ	T	L
J	1000'	03°25'57"	29.96'	59.91'
K	"	"	"	"
L	"	"	"	"



BM. 26-173LA-55
Elev. 207.61'
Cut spike on E. curb Arlington Ave 10' S. of beginning curb return on SE. cor. Arlington Ave. & 23rd St.

BM 30-173LA-55
Elev. 208.55'
Lead & Tack in E. curb Western Ave. 3' N. of end curb return N.E. cor. 21st St & Western Ave. & 24th St.

148-A